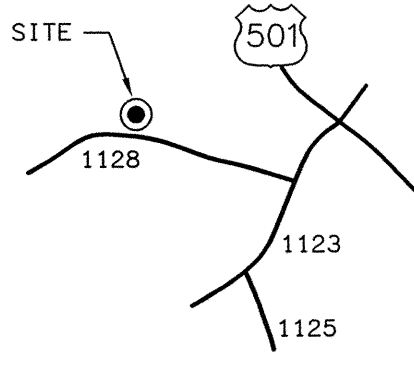
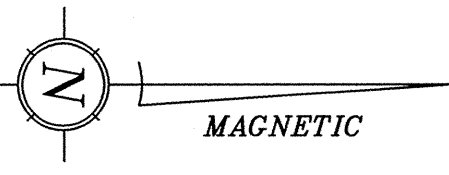


CHARLOTTE H. WEAVER
P. C. 13, P. 679

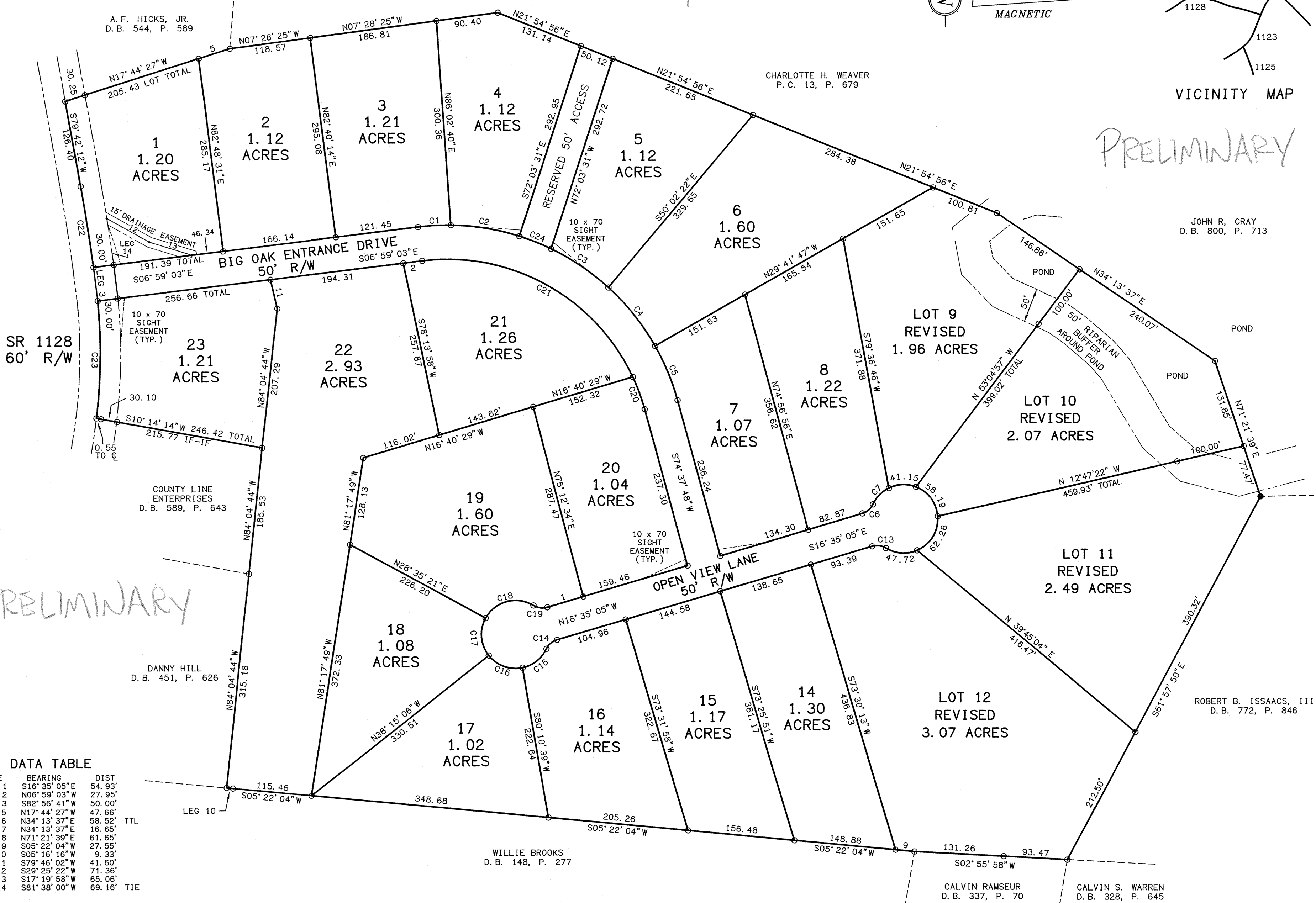
PRELIMINARY

P. C. 15, P. 181



VICINITY MAP

PRELIMINARY



PRELIMINARY

DATA TABLE

LINE	BEARING	DIST
L-1	S16°35'05"E	54.93'
L-2	N06°59'03"W	27.95'
L-3	S82°56'41"W	50.00'
L-4	N17°44'27"W	47.66'
L-5	N34°13'37"E	58.52'
L-6	N34°13'37"E	16.65'
L-7	N71°21'39"E	61.65'
L-8	S05°22'04"W	27.55'
L-9	S05°22'04"W	9.33'
L-10	S79°46'02"W	41.60'
L-11	S29°25'22"W	71.36'
L-12	S17°19'58"W	65.06'
L-13	S81°38'00"W	69.16'
L-14		TIE

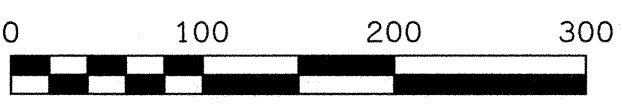
CURVE DATA

CURVE	DELTA	RADIUS	ARC	TAN	CHORD BRG	CHORD
C-1	07°50'05"	350.00	47.86	23.97	S03°04'01"E	47.82
C-2	16°41'56"	350.00	102.01	51.37	S09°12'00"W	101.65
C-3	16°40'48"	350.00	101.89	51.31	S34°05'55"W	101.53
C-4	18°01'04"	350.00	110.06	55.49	S51°26'51"W	109.61
C-5	14°10'28"	350.00	86.58	43.51	S67°32'35"W	86.36
C-6	48°11'23"	25.00	21.03	11.18	N40°40'47"W	20.41
C-7	38°48'23"	50.00	33.87	17.61	S45°22'17"E	33.22
C-13	48°11'23"	25.00	21.03	11.18	S07°30'36"W	20.41
C-14	48°11'23"	25.00	21.03	11.18	S40°40'47"E	20.41
C-15	52°44'14"	50.00	46.02	24.79	N38°24'21"W	44.41

CURVE DATA

CURVE	DELTA	RADIUS	ARC	TAN	CHORD BRG	CHORD
C-16	63°39'51"	50.00	55.56	31.04	N19°47'41"E	52.74
C-17	67°14'33"	50.00	58.68	33.25	N85°14'53"E	55.37
C-18	92°44'08"	50.00	80.93	52.45	S14°45'46"E	72.38
C-19	48°11'23"	25.00	21.03	11.18	N07°30'36"E	20.41
C-20	09°38'27"	300.00	50.48	25.30	S69°48'34"W	50.42
C-21	71°58'24"	300.00	376.85	217.86	S29°00'09"W	352.56
C-22	02°40'55"	2578.82	120.71	60.37	S81°02'40"W	120.70
C-23	11°56'49"	826.98	172.44	86.53	N89°25'18"W	172.13
C-24	08°12'34"	350.00	50.15	25.12	S21°39'14"W	50.11

PRELIMINARY



Drawn By: ARP
 Checked By: JJJ
 Scale: 1"=100'
 Project No.: 148-115
 Date: JULY 23, 2014
 Survey Date: JULY 23, 2014
 Sheet No.: 1 of 1

Other References:

COMPOSITE PLAT
 WEAVER'S CORNER
 LOTS 1-12 & 14-23
 FLAT RIVER TWP., PERSON COUNTY, N.C.
 OWNER: DANSFIELD, LLC



Coulter Jewell Thames
 ENGINEERING-LAND SURVEYING-LANDSCAPE ARCHITECTURE
 212 S. LAMAR STREET, ROXBORO, N.C. 27573
 p336.599.8742 f336.599.3019 info@cjtpa.com
 Lic. #1209