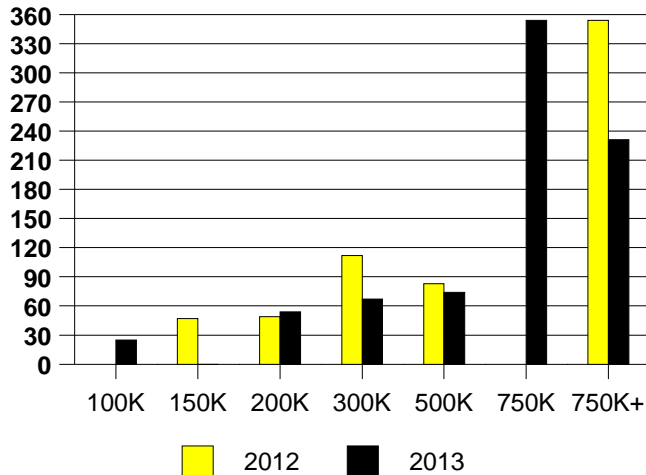
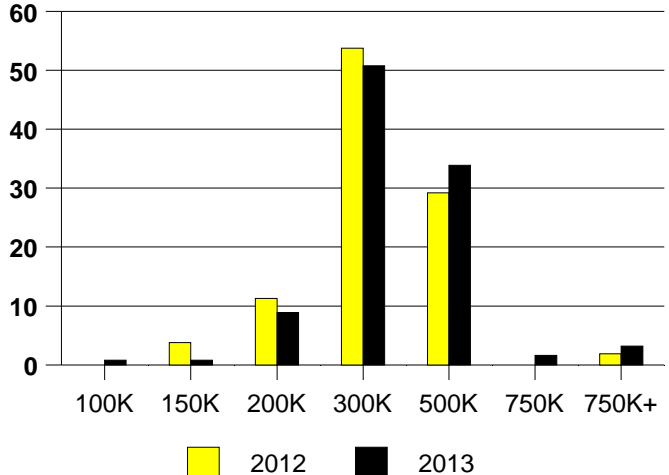


	<u>2012</u>	<u>2013</u>
Total Sold Volume	\$ 29,907,672	\$ 38,063,063
Number of Sales	106	124
Median Sale Price	\$ 265,000	\$ 283,250

**DAYS ON THE MARKET (ADDISON)**



**ADDISON MKT SHARE BY PRICE RANGE**



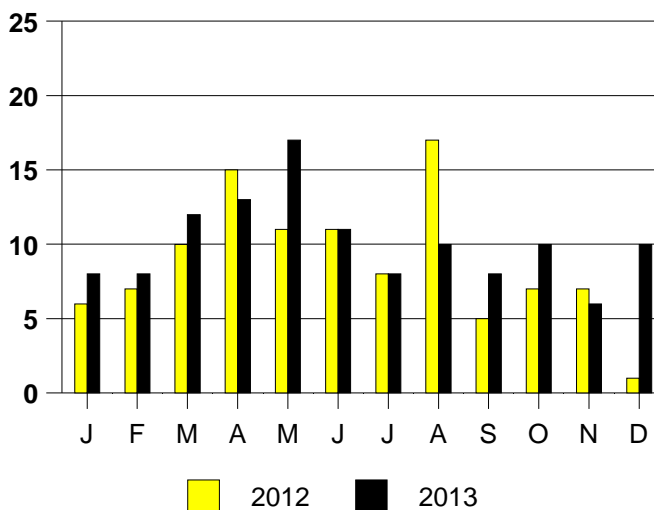
**SALE/LIST PRICE RATIO**

0K-100K	75.4%
101K-150K	100.0%
151K-200K	98.0%
201K-300K	96.8%
301K-500K	97.5%
501K-750K	95.4%
751K+	93.3%

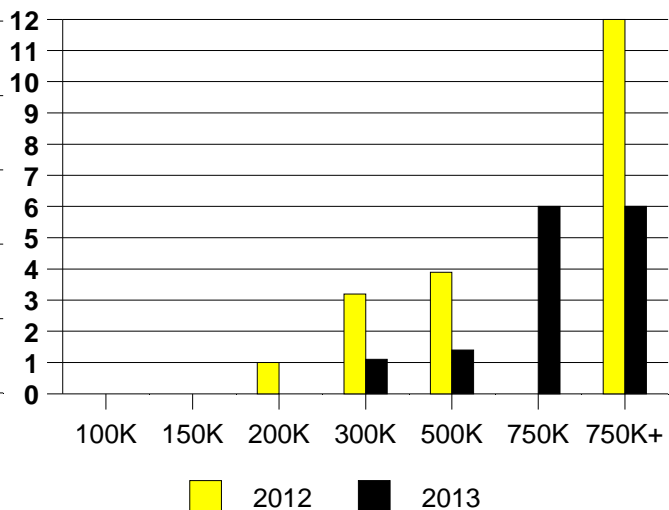
**AVERAGE OVERPRICING**  
Original List Price to Sale Price

2012	5.4%
2013	5.6%

**ADDISON MONTHLY SALES**



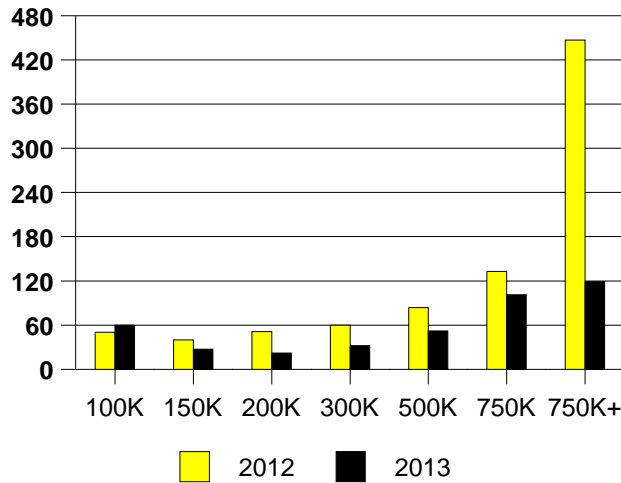
Inventory not shown where no sales  
**ADDISON MONTHS OF INVENTORY**



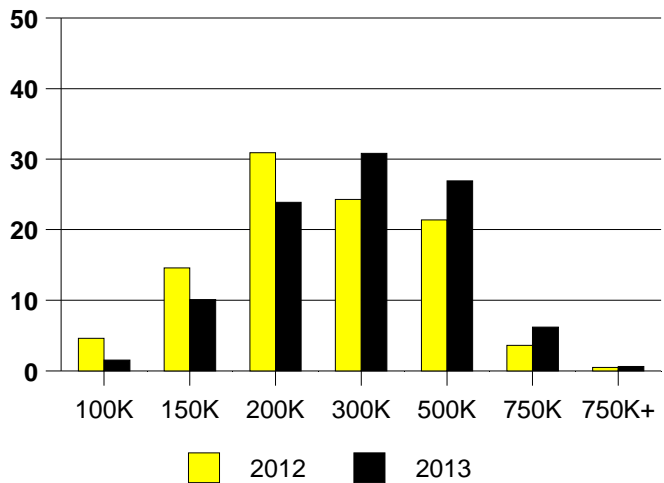
NTREIS Sold informaton as of 01/08/2014

	<u>2012</u>	<u>2013</u>
Total Sold Volume	\$359,700,349	\$ 453,253,915
Number of Sales	1484	1638
Median Sale Price	\$ 200,000	\$ 240,000

**DAYS ON THE MARKET (ALLEN)**



**ALLEN MKT SHARE BY PRICE RANGE**



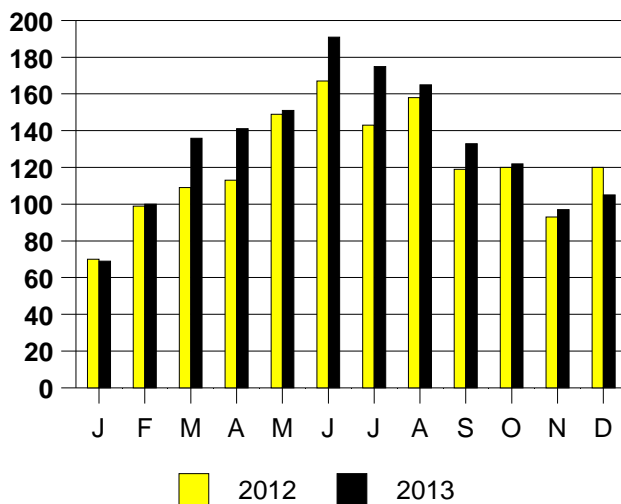
**SALE/LIST PRICE RATIO**

0K-100K	93.0%
101K-150K	98.8%
151K-200K	99.3%
201K-300K	99.2%
301K-500K	97.4%
501K-750K	96.3%
751K+	95.1%

**AVERAGE OVERPRICING**  
Original List Price to Sale Price

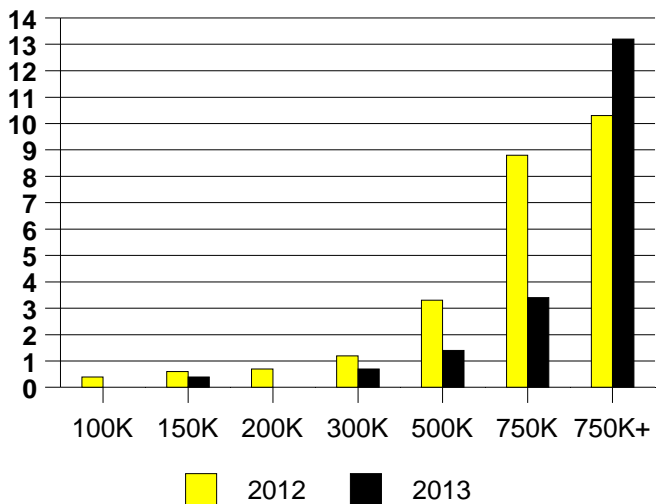
2012	4.6%
2013	2.6%

**ALLEN MONTHLY SALES**



Inventory not shown where no sales

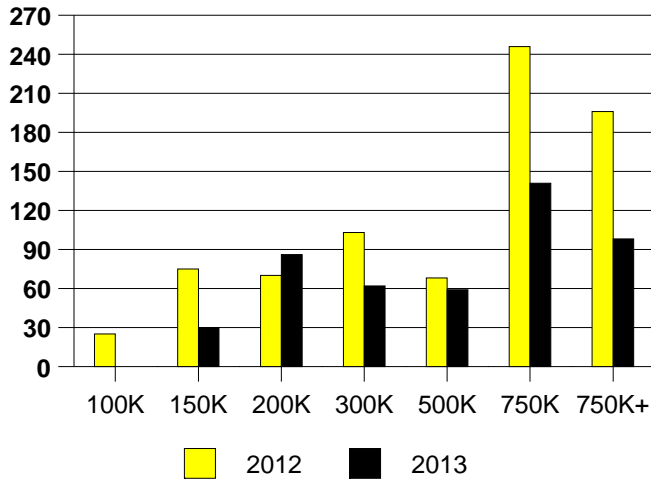
**ALLEN MONTHS OF INVENTORY**



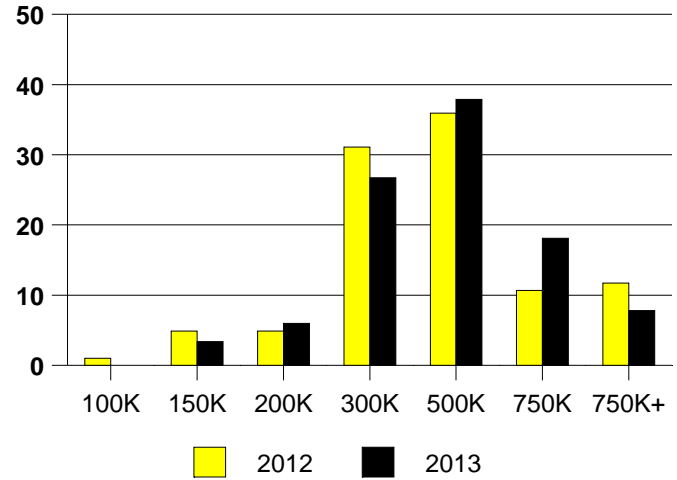
NTREIS Sold informaton as of 01/08/2014

	<u>2012</u>	<u>2013</u>
Total Sold Volume	\$ 43,700,965	\$ 47,948,091
Number of Sales	103	116
Median Sale Price	\$ 339,000	\$ 356,000

**DAYS ON THE MARKET (ARGYLE)**



**ARGYLE MKT SHARE BY PRICE RANGE**



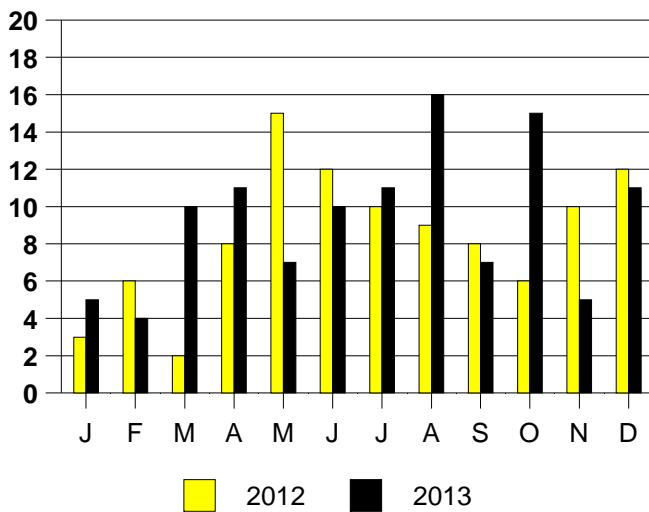
**SALE/LIST PRICE RATIO**

0K-100K	NONE
101K-150K	100.2%
151K-200K	94.7%
201K-300K	97.9%
301K-500K	97.3%
501K-750K	97.6%
751K+	94.2%

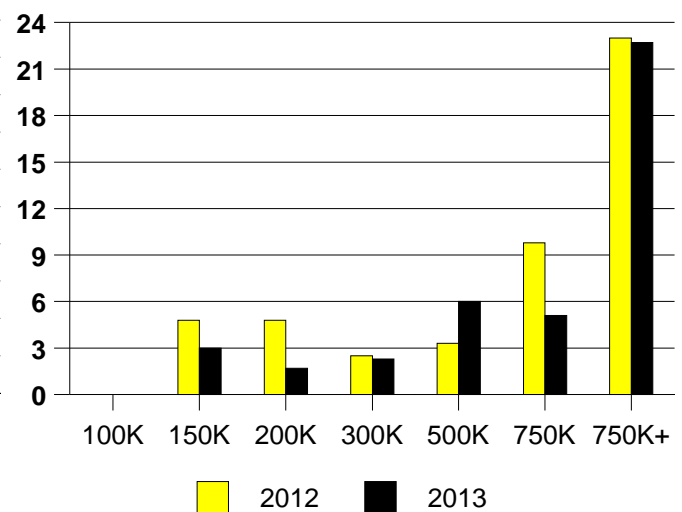
**AVERAGE OVERPRICING**  
Original List Price to Sale Price

2012	8.7%
2013	5.5%

**ARGYLE MONTHLY SALES**



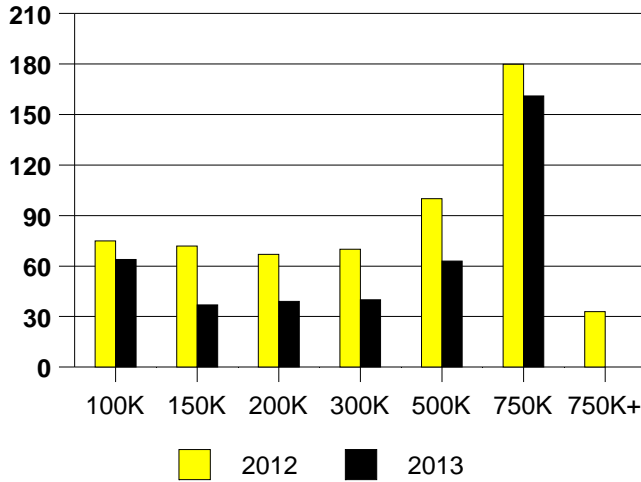
Inventory not shown where no sales  
**ARGYLE MONTHS OF INVENTORY**



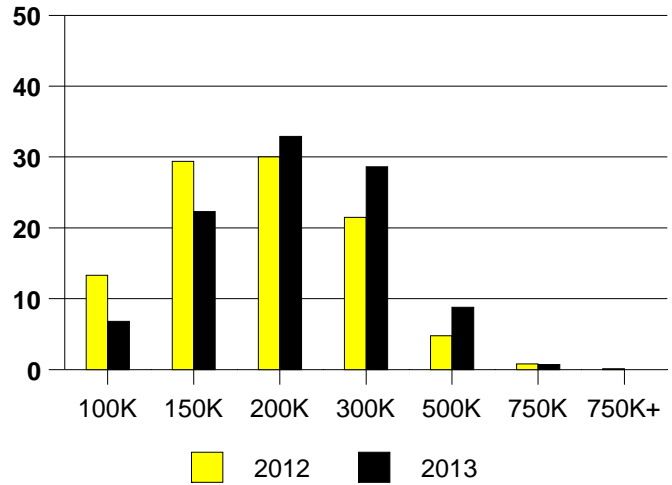
NTREIS Sold informaton as of 01/08/2014

	<u>2012</u>	<u>2013</u>
Total Sold Volume	\$ 229,407,832	\$ 303,252,634
Number of Sales	1304	1537
Median Sale Price	\$ 160,500	\$ 182,500

**DAYS ON MARKET(CARROLLTON)**



**CARROLLTON MKT SHARE BY PRICE RANGE**



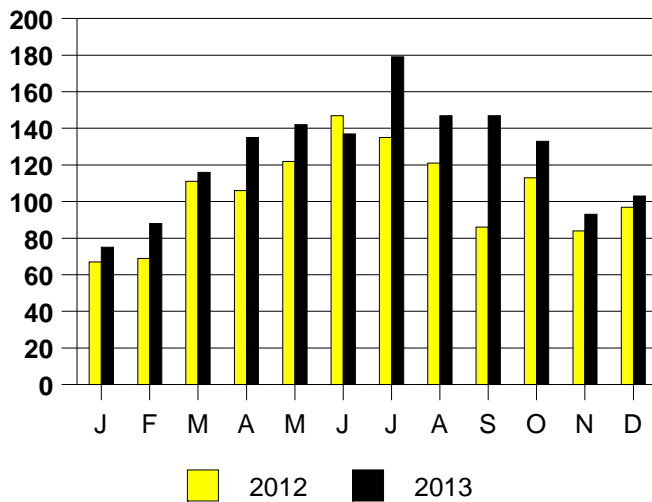
**SALE/LIST PRICE RATIO**

0K-100K	97.9%
101K-150K	98.8%
151K-200K	98.8%
201K-300K	98.3%
301K-500K	97.2%
501K-750K	96.8%
751K+	NONE

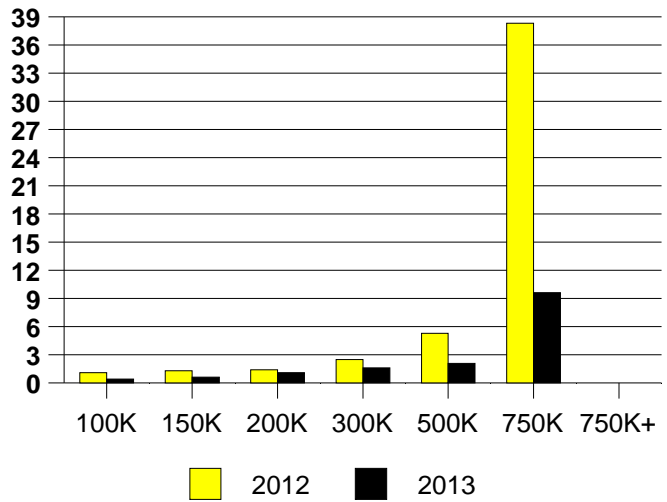
**AVERAGE OVERPRICING**  
Original List Price to Sale Price

2012	6.2%
2013	3.2%

**CARROLLTON MONTHLY SALES**



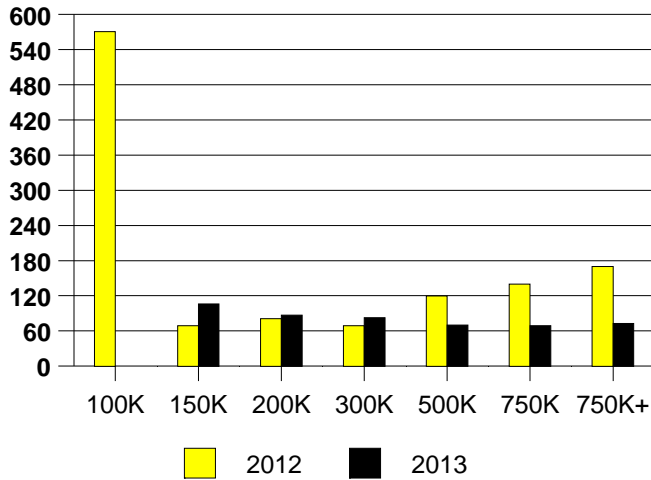
**CARROLLTON MONTHS OF INVENTORY**



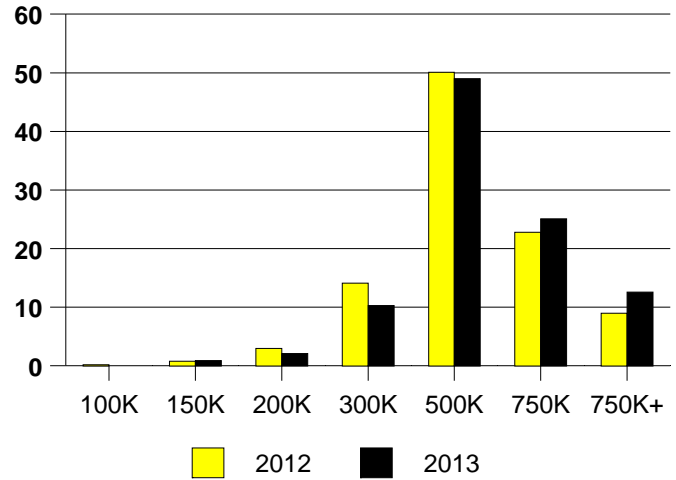
NTREIS Sold informaton as of 01/08/2014

	<u>2012</u>	<u>2013</u>
Total Sold Volume	\$ 227,120,424	\$ 239,484,684
Number of Sales	469	467
Median Sale Price	\$ 425,000	\$ 450,000

**DAYS ON THE MARKET (COLLEYVILLE)**



**COLLEYVILLE MKT SHARE BY PRICE RANGE**



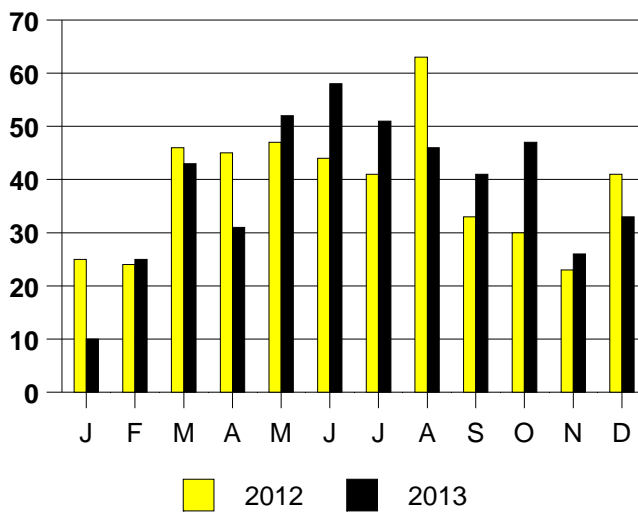
**SALE/LIST PRICE RATIO**

0K-100K	NONE
101K-150K	95.5%
151K-200K	103.7%
201K-300K	98.8%
301K-500K	97.6%
501K-750K	97.4%
751K+	95.6%

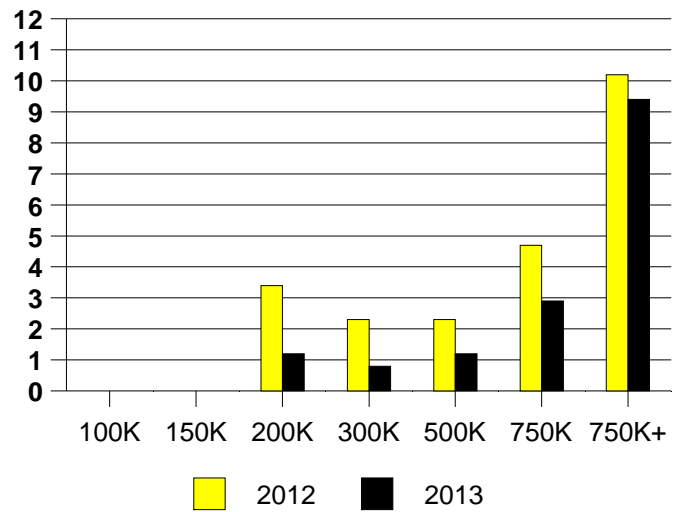
**AVERAGE OVERPRICING**  
Original List Price to Sale Price

2012	7.5%
2013	5.1%

**COLLEYVILLE MONTHLY SALES**



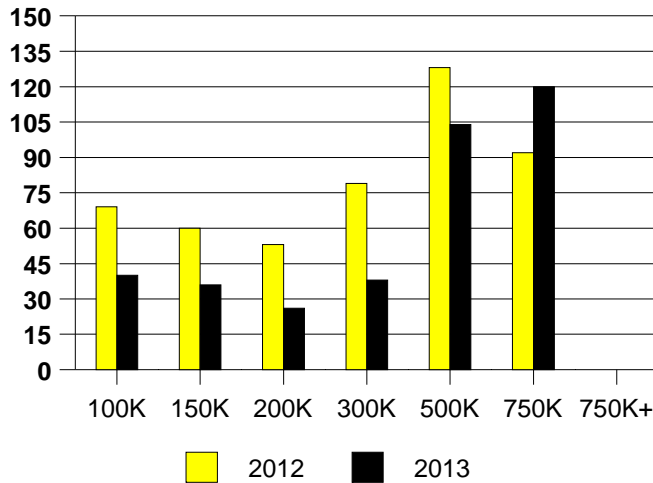
Inventory not shown where no sales  
**COLLEYVILLE MONTHS OF INVENTORY**



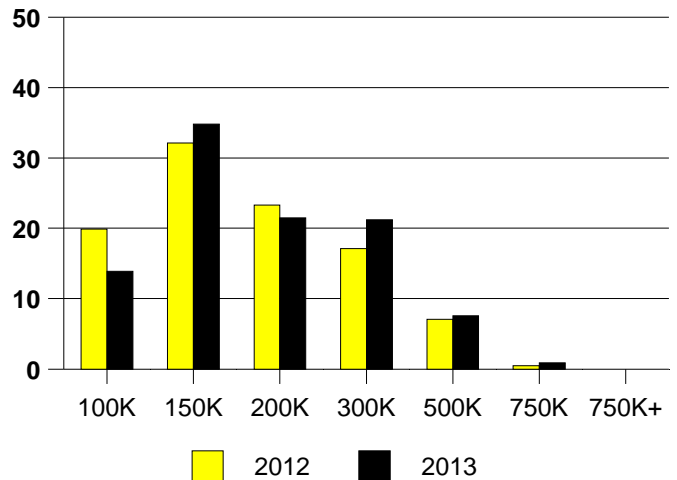
NTREIS Sold informaton as of 01/08/2014

	<u>2012</u>	<u>2013</u>
Total Sold Volume	\$ 90,850,949	\$ 116,033,499
Number of Sales	549	655
Median Sale Price	\$ 147,900	\$ 154,000

**DAYS ON THE MARKET (COLONY)**



**COLONY MKT SHARE BY PRICE RANGE**



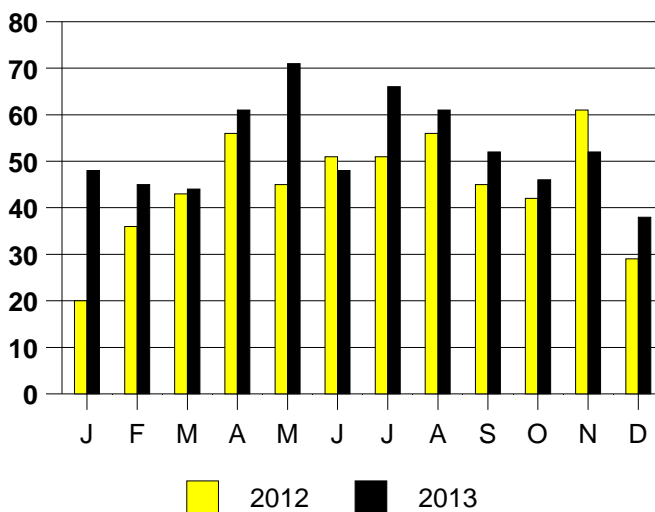
**SALE/LIST PRICE RATIO**

0K-100K	100.2%
101K-150K	98.7%
151K-200K	98.6%
201K-300K	98.8%
301K-500K	95.7%
501K-750K	97.6%
751K+	NONE

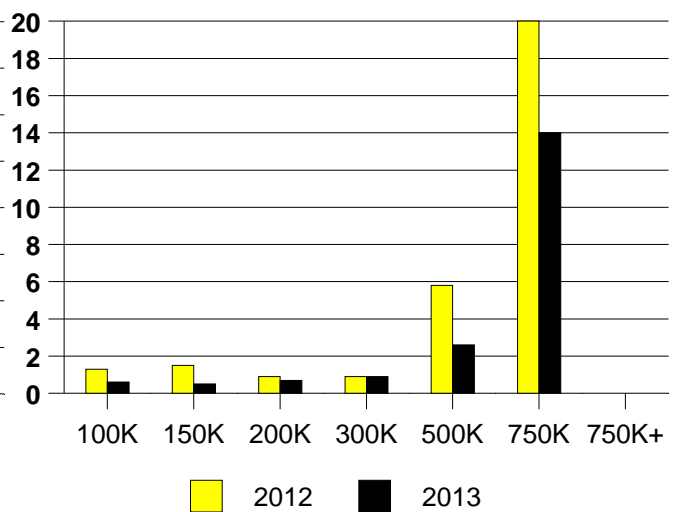
**AVERAGE OVERPRICING**  
Original List Price to Sale Price

2012	5.6%
2013	2.7%

**THE COLONY MONTHLY SALES**



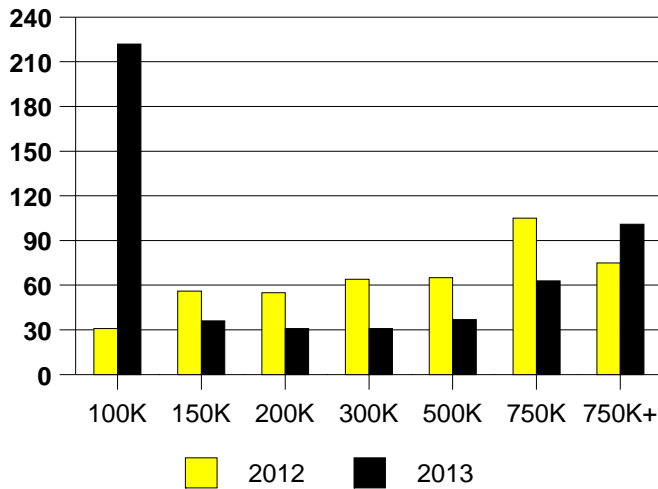
Inventory not shown where no sales  
**THE COLONY MONTHS OF INVENTORY**



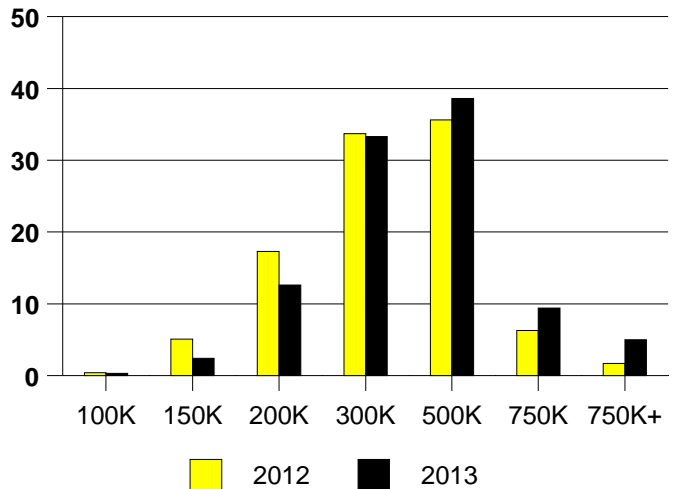
NTREIS Sold informaton as of 01/08/2014

	<u>2012</u>	<u>2013</u>
Total Sold Volume	\$ 162,083,109	\$ 202,158,173
Number of Sales	526	585
Median Sale Price	\$ 282,750	\$ 306,450

**DAYS ON THE MARKET (COPPELL)**



**COPPELL MKT SHARE BY PRICE RANGE**



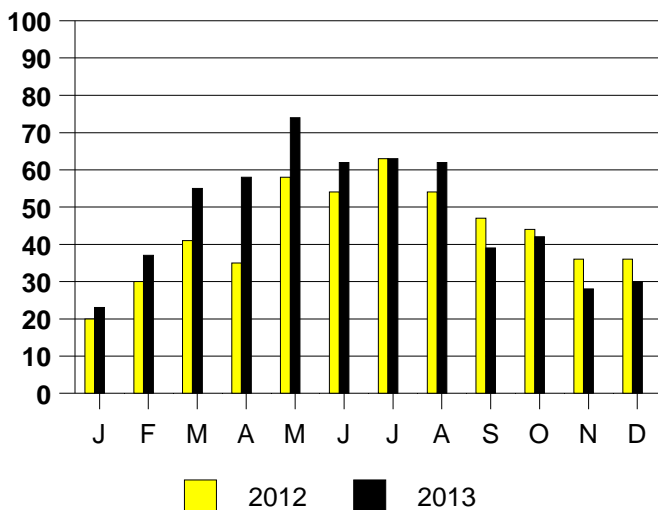
**SALE/LIST PRICE RATIO**

0K-100K	81.4%
101K-150K	99.7%
151K-200K	98.8%
201K-300K	99.5%
301K-500K	98.4%
501K-750K	97.1%
751K+	96.0%

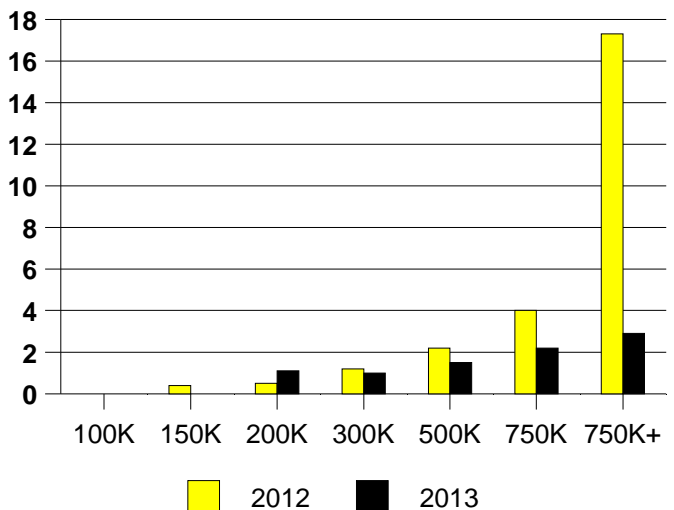
**AVERAGE OVERPRICING**  
Original List Price to Sale Price

2012	5.2%
2013	2.6%

**COPPELL MONTHLY SALES**



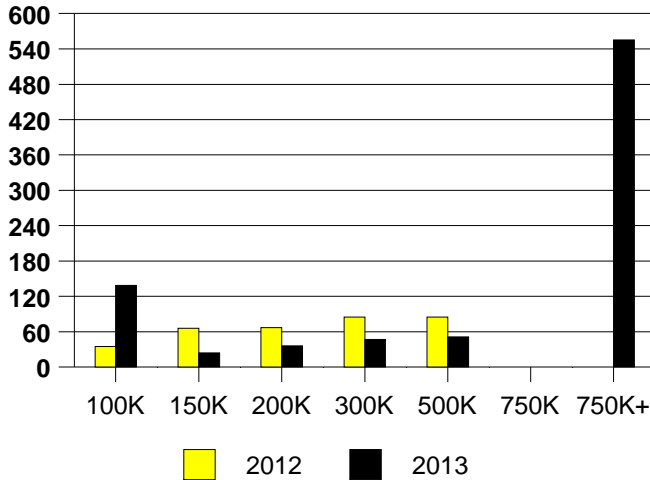
Inventory not shown where no sales  
**COPPELL MONTHS OF INVENTORY**



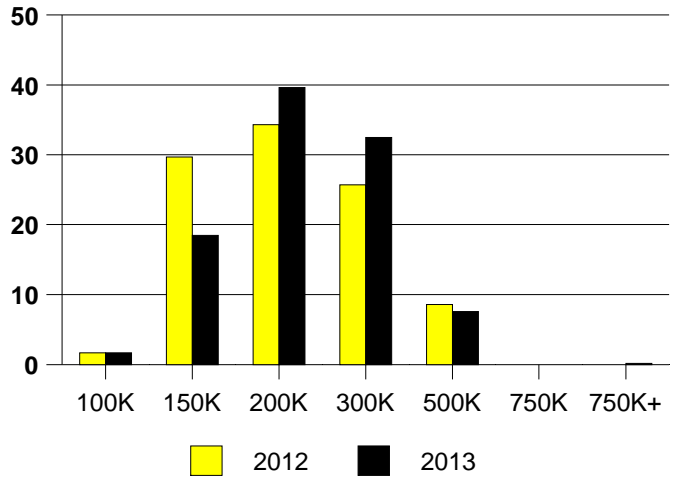
NTREIS Sold informaton as of 01/08/2014

	<u>2012</u>	<u>2013</u>
Total Sold Volume	\$ 78,644,948	\$ 85,545,755
Number of Sales	408	422
Median Sale Price	\$ 172,993	\$ 185,750

DAYS ON THE MARKET (CORINTH)



CORINTH MKT SHARE BY PRICE RANGE



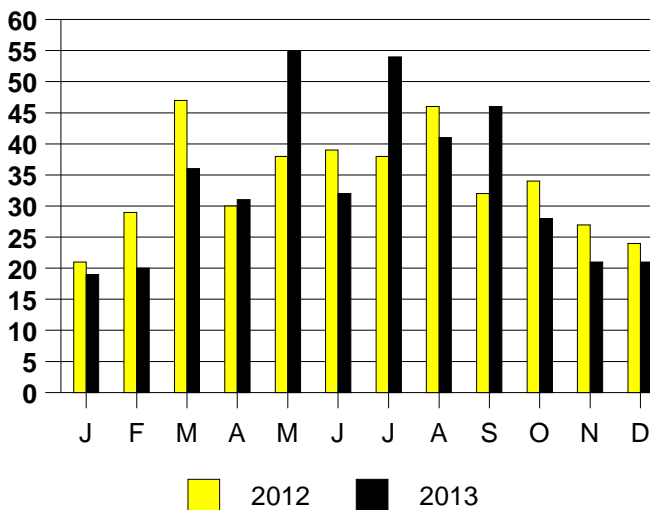
SALE/LIST PRICE RATIO

0K-100K	93.9%
101K-150K	97.9%
151K-200K	98.8%
201K-300K	98.4%
301K-500K	98.3%
501K-750K	NONE
751K+	96.2%

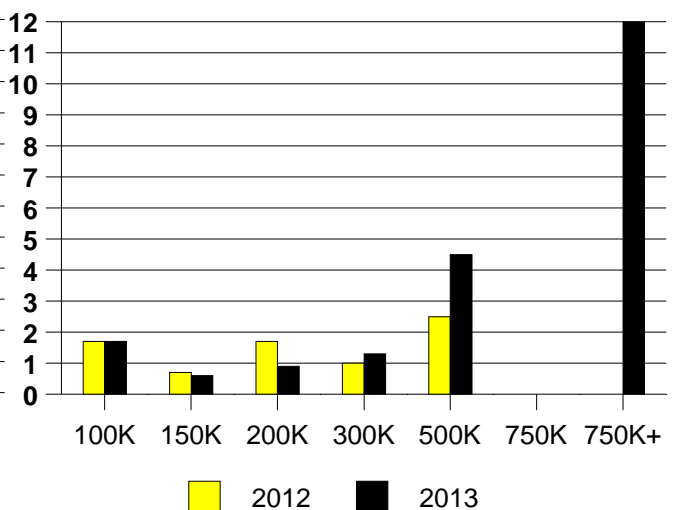
AVERAGE OVERPRICING  
Original List Price to Sale Price

2012	4.8%
2013	2.8%

CORINTH MONTHLY SALES



Inventory not shown where no sales  
CORINTH MONTHS OF INVENTORY

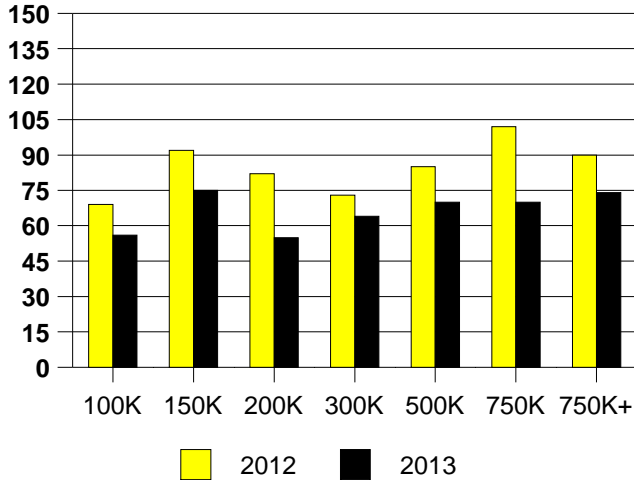


NTREIS Sold informaton as of 01/08/2014

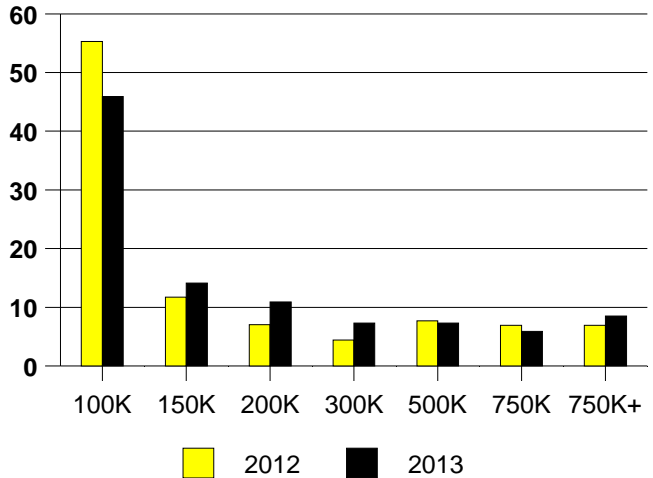


	2012	2013
Total Sold Volume	\$ 302,069,062	\$ 344,834,344
Number of Sales	1267	1294
Median Sale Price	\$ 87,500	\$ 115,100

DAYS ON THE MARKET (DALLAS)



DALLAS MKT SHARE BY PRICE RANGE



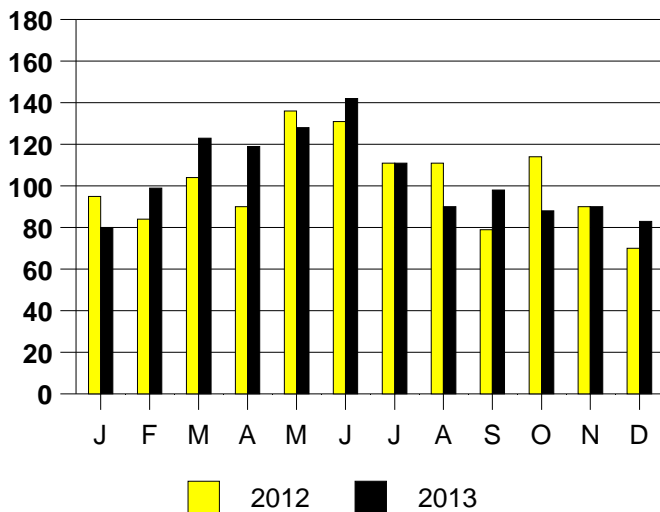
SALE/LIST PRICE RATIO

0K-100K	99.6%
101K-150K	98.3%
151K-200K	98.0%
201K-300K	96.0%
301K-500K	96.8%
501K-750K	97.2%
751K+	96.5%

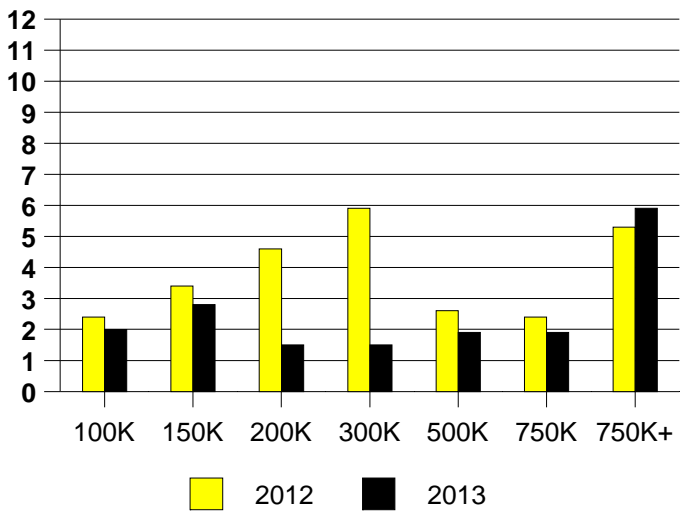
AVERAGE OVERPRICING  
Original List Price to Sale Price

2012	9.3%
2013	6.8%

DALLAS MONTHLY SALES



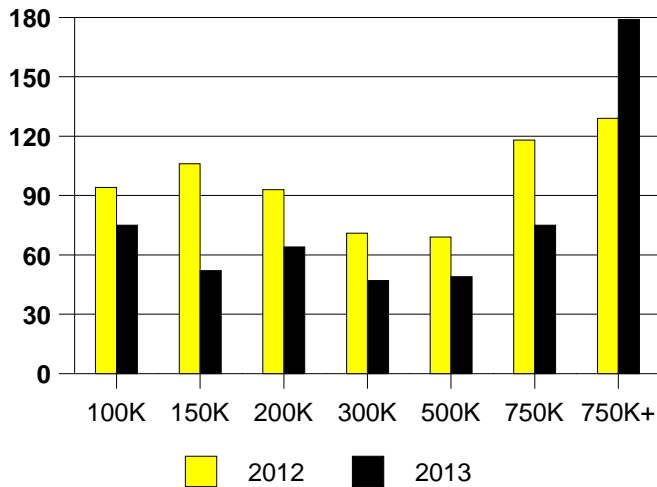
Inventory not shown where no sales  
DALLAS MONTHS OF INVENTORY



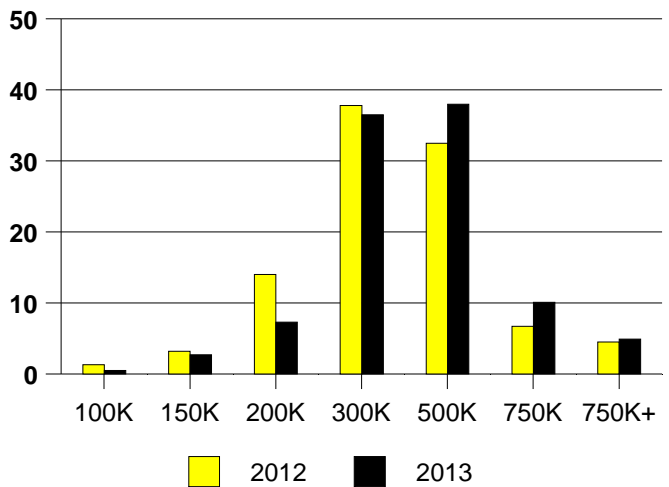
NTREIS Sold informaton as of 01/08/2014

	<u>2012</u>	<u>2013</u>
Total Sold Volume	\$ 356,409,780	\$ 474,361,872
Number of Sales	1049	1291
Median Sale Price	\$ 277,000	\$ 312,900

**DAYS ON THE MARKET (AREA 10)**



**AREA 10 MKT SHARE BY PRICE RANGE**



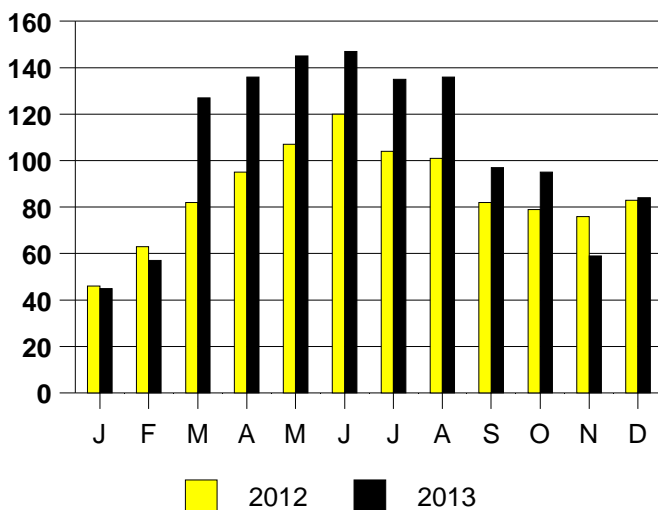
**SALE/LIST PRICE RATIO**

0K-100K	98.2%
101K-150K	96.5%
151K-200K	96.6%
201K-300K	97.8%
301K-500K	97.8%
501K-750K	96.4%
751K+	92.8%

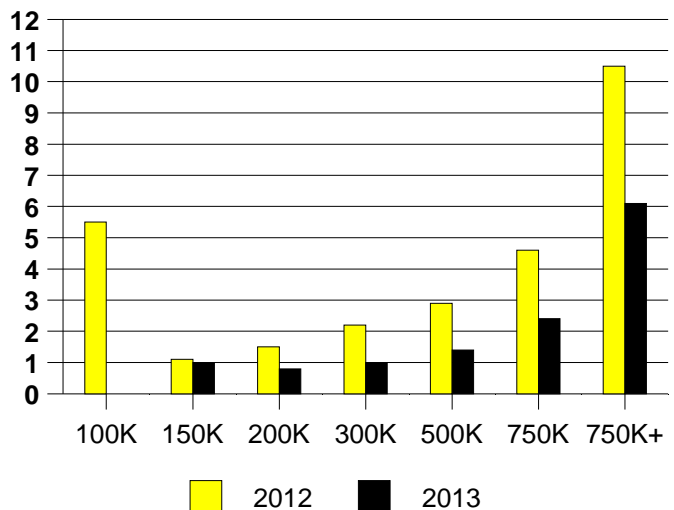
**AVERAGE OVERPRICING**  
Original List Price to Sale Price

2012	6.6%
2013	5.1%

**AREA 10 MONTHLY SALES**



Inventory not shown where no sales  
**AREA 10 MONTHS OF INVENTORY**

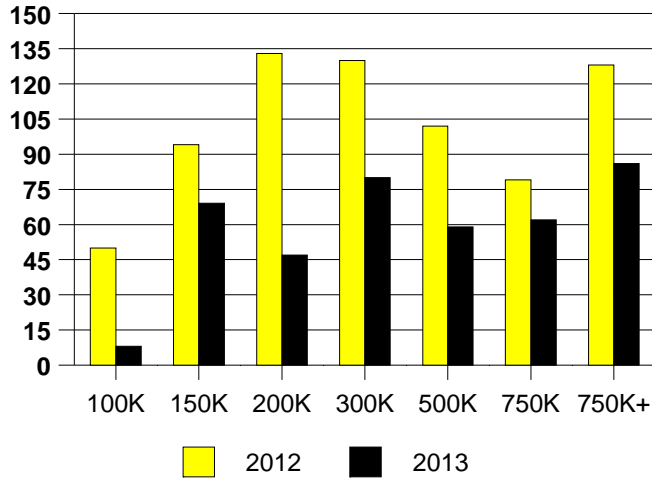


NTREIS Sold informaton as of 01/08/2014

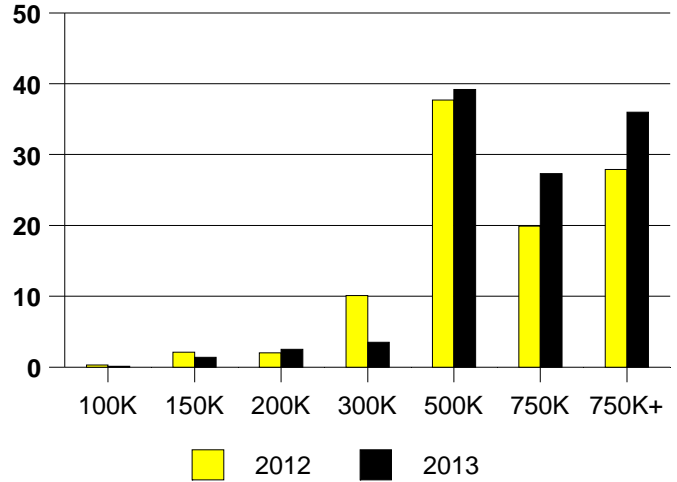
**CHICAGO TITLE**

	<u>2012</u>	<u>2013</u>
Total Sold Volume	\$ 522,475,355	\$ 737,753,900
Number of Sales	750	912
Median Sale Price	\$ 490,000	\$ 587,500

**DAYS ON THE MARKET (DALLAS NORTH)**



**DALLAS N MKT SHARE BY PRICE RANGE**



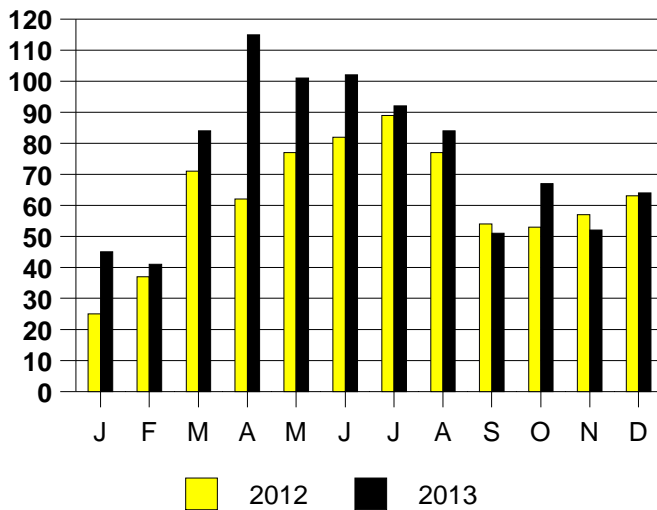
**SALE/LIST PRICE RATIO**

0K-100K	112.5%
101K-150K	95.7%
151K-200K	96.6%
201K-300K	95.5%
301K-500K	96.3%
501K-750K	96.6%
751K+	95.5%

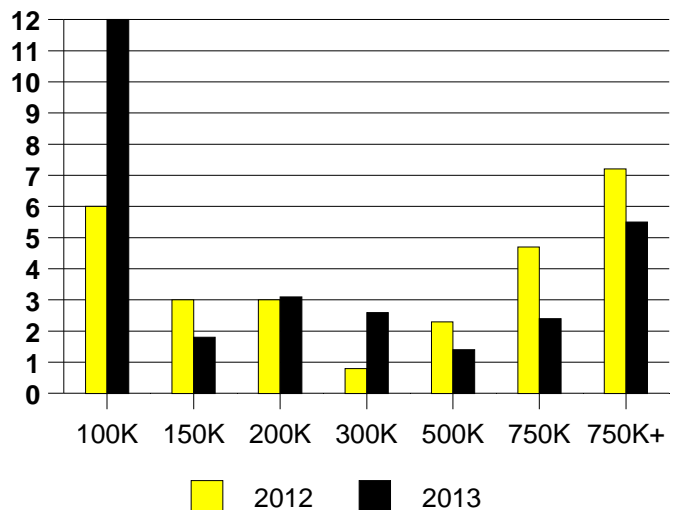
**AVERAGE OVERPRICING**  
Original List Price to Sale Price

2012	9.8%
2013	7.1%

**DALLAS NORTH MONTHLY SALES**



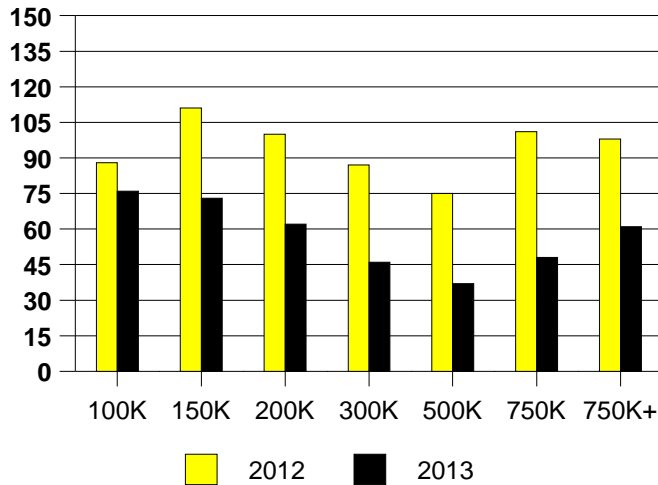
**DALLAS NORTH MONTHS OF INVENTORY**



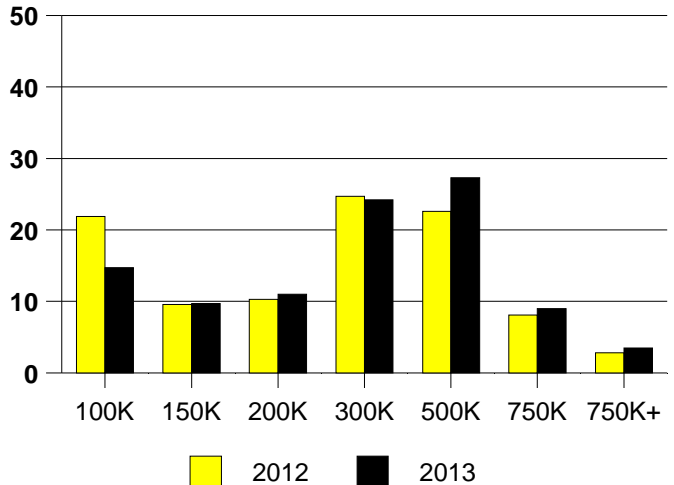
NTREIS Sold informaton as of 01/08/2014

	<u>2012</u>	<u>2013</u>
Total Sold Volume	\$ 615,530,275	\$ 791,760,719
Number of Sales	2296	2662
Median Sale Price	\$ 232,375	\$ 262,500

**DAYS ON THE MARKET (DALLAS EAST)**



**DALLAS EAST MKT SHARE BY PRICE RANGE**



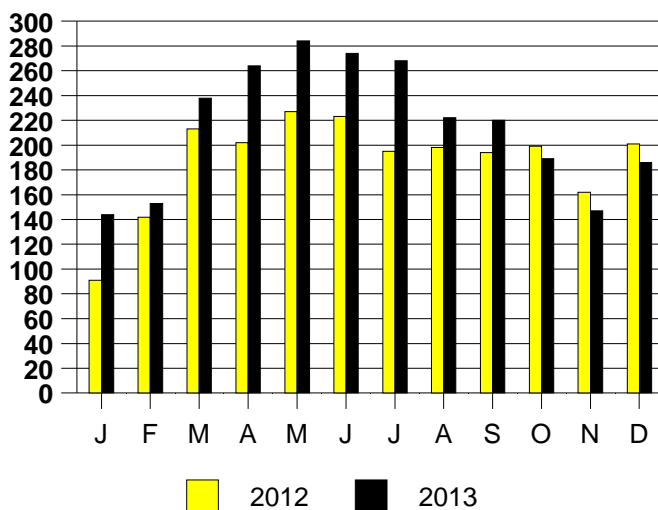
**SALE/LIST PRICE RATIO**

0K-100K	96.3%
101K-150K	96.9%
151K-200K	97.0%
201K-300K	98.0%
301K-500K	98.2%
501K-750K	97.8%
751K+	96.9%

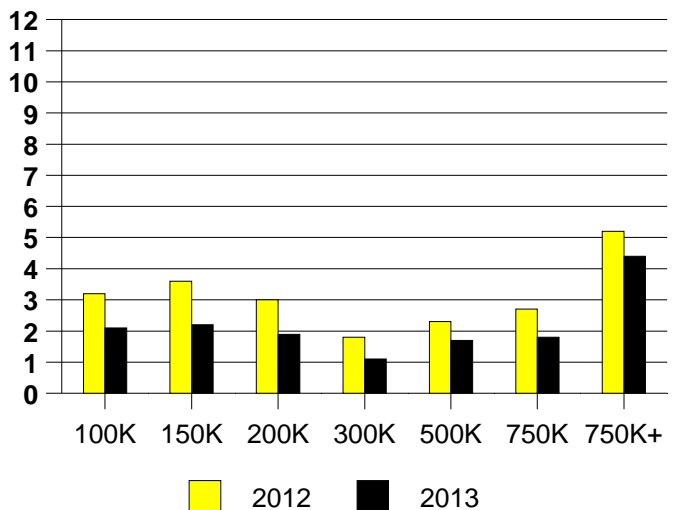
**AVERAGE OVERPRICING**  
Original List Price to Sale Price

2012	9.4%
2013	6.0%

**DALLAS EAST MONTHLY SALES**



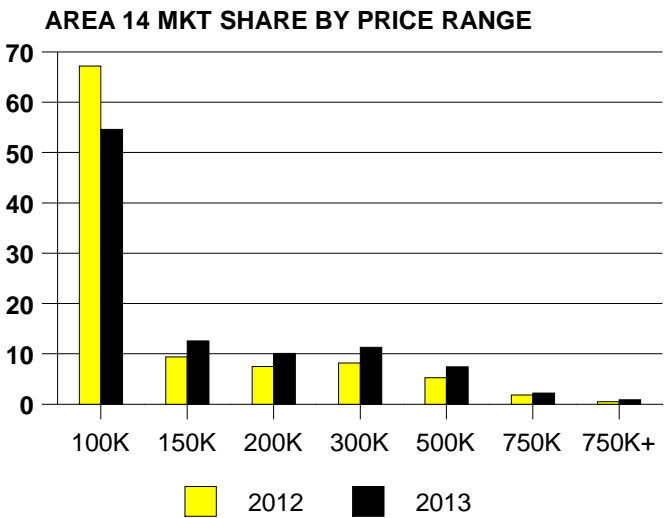
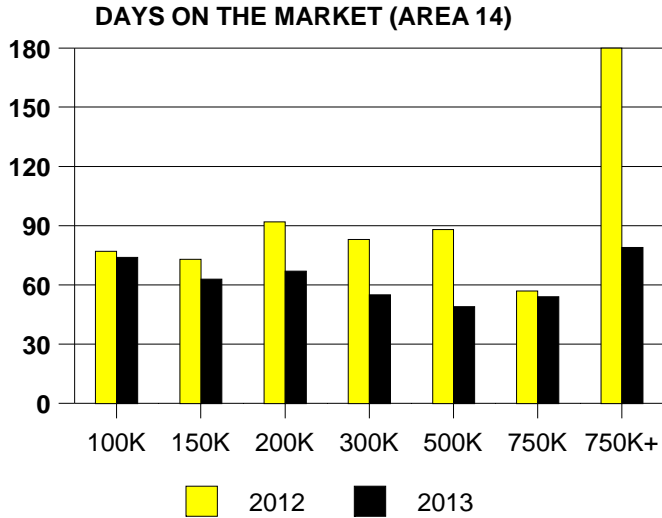
**DALLAS EAST MONTHS OF INVENTORY**



NTREIS Sold informaton as of 01/08/2014

**CHICAGO TITLE**

	<u>2012</u>	<u>2013</u>
Total Sold Volume	\$ 110,258,448	\$ 146,953,659
Number of Sales	954	995
Median Sale Price	\$ 71,393	\$ 93,500



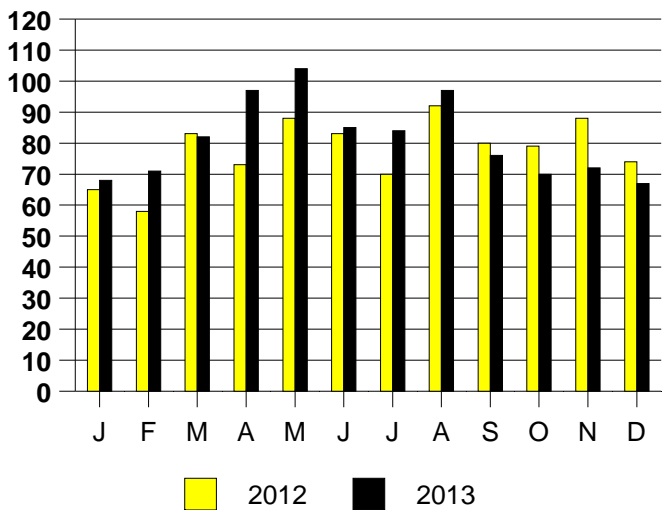
#### SALE/LIST PRICE RATIO

0K-100K	99.8%
101K-150K	99.1%
151K-200K	97.6%
201K-300K	97.8%
301K-500K	97.2%
501K-750K	97.9%
751K+	95.8%

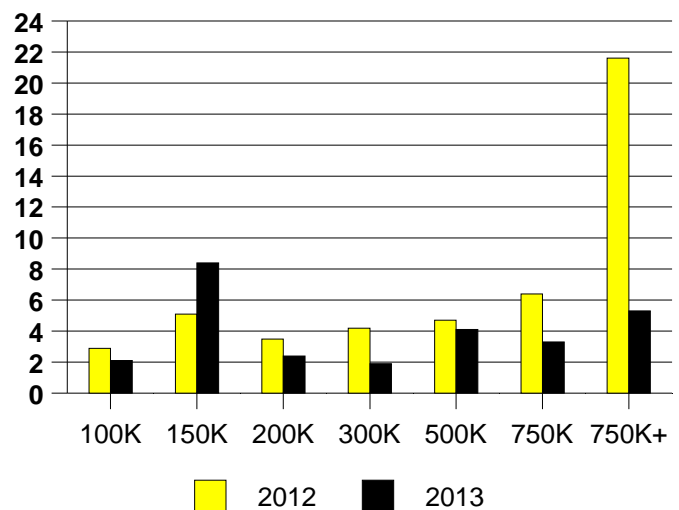
#### AVERAGE OVERPRICING Original List Price to Sale Price

2012	12.1%
2013	8.2%

#### AREA 14 MONTHLY SALES



#### Inventory not shown where no sales AREA 14 MONTHS OF INVENTORY

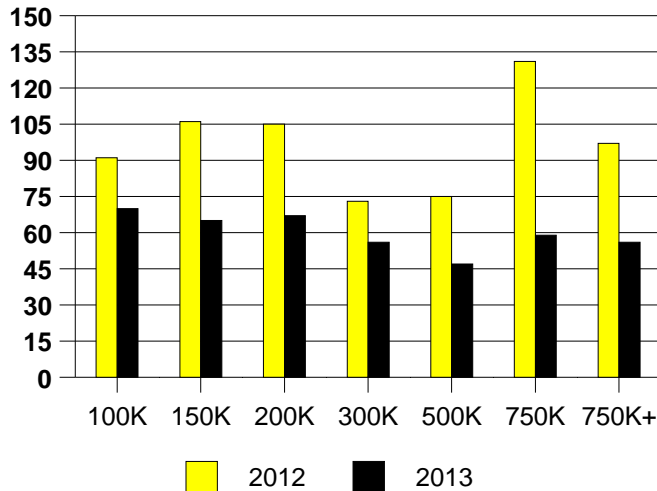


NTREIS Sold informaton as of 01/08/2014

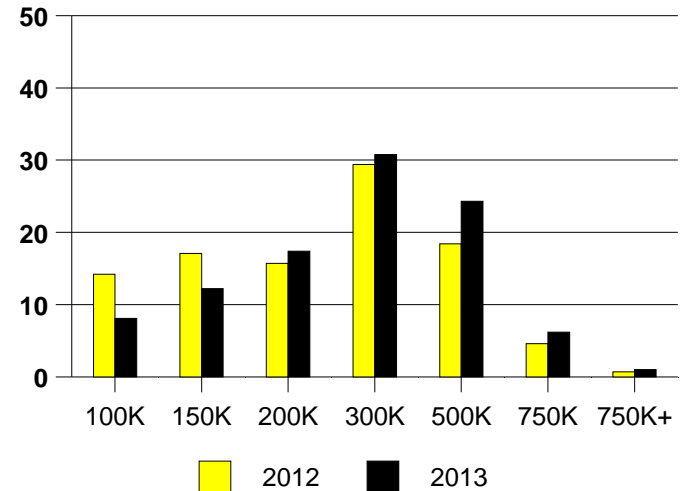
CHICAGO TITLE

	<u>2012</u>	<u>2013</u>
Total Sold Volume	\$ 142,799,737	\$ 189,041,853
Number of Sales	613	707
Median Sale Price	\$ 210,000	\$ 244,000

**DAYS ON THE MARKET (AREA 16)**



**% MARKET SHARE BY PRICE RANGE(AREA 16)**



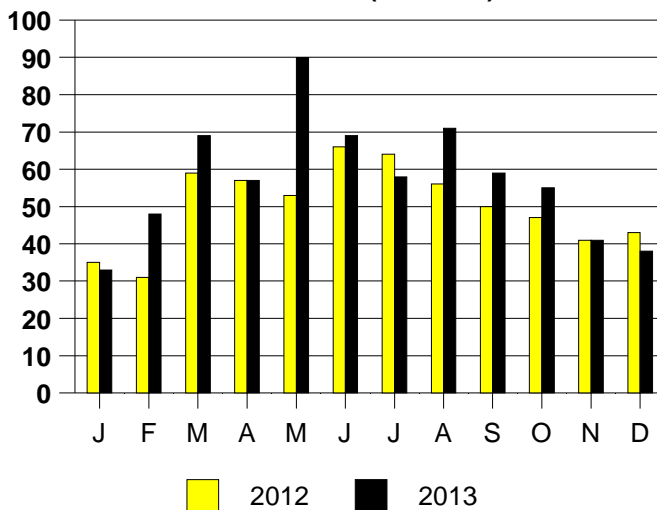
**SALE/LIST PRICE RATIO**

0K-100K	96.4%
101K-150K	99.1%
151K-200K	96.5%
201K-300K	97.6%
301K-500K	97.5%
501K-750K	97.0%
751K+	101.2%

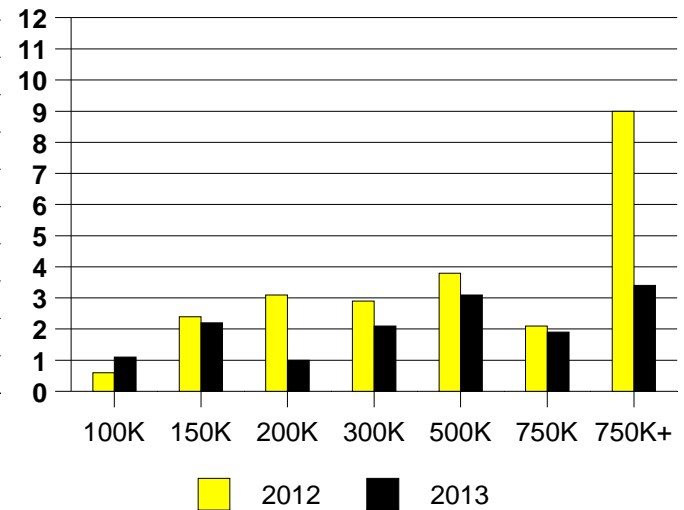
**AVERAGE OVERPRICING**  
Original List Price to Sale Price

2012	11.6%
2013	5.6%

**MONTHLY SALES (AREA 16)**



**Inventory not shown where no sales**  
**MONTHS OF INVENTORY(AREA 16)**

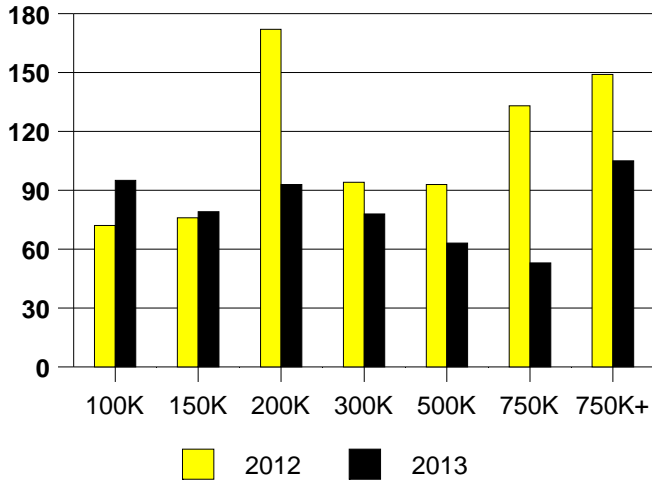


NTREIS Sold informaton as of 01/08/2014

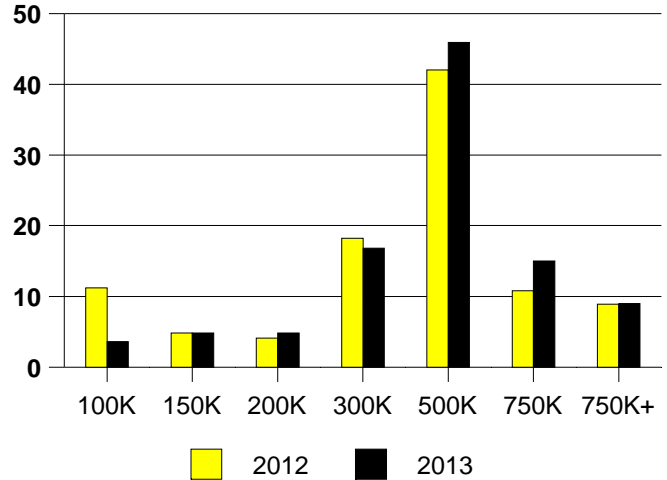
**CHICAGO TITLE**

	<u>2012</u>	<u>2013</u>
Total Sold Volume	\$ 108,798,529	\$ 150,521,638
Number of Sales	269	333
Median Sale Price	\$ 350,000	\$ 389,200

**DAYS ON THE MARKET (DALLAS OAK LAWN)**



**DALLAS NE MKT SHARE BY PRICE RANGE**



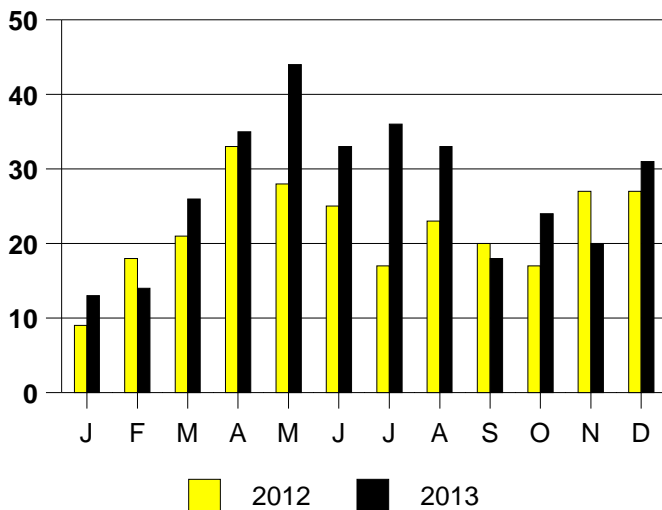
**SALE/LIST PRICE RATIO**

0K-100K	102.1%
101K-150K	93.4%
151K-200K	94.6%
201K-300K	96.0%
301K-500K	97.9%
501K-750K	96.9%
751K+	94.7%

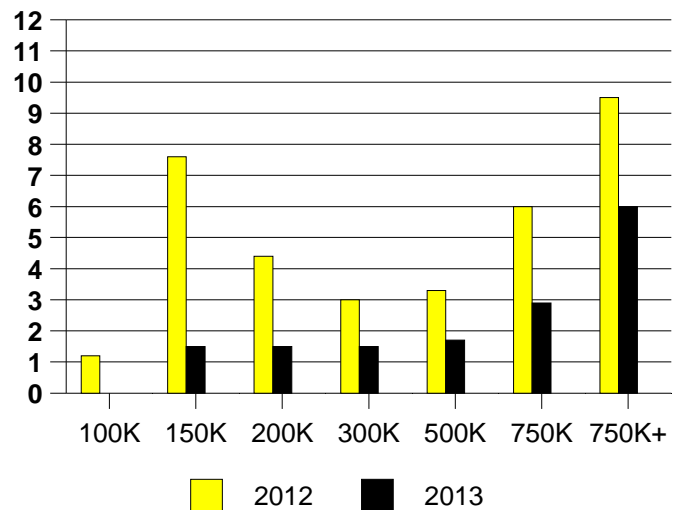
**AVERAGE OVERPRICING**  
Original List Price to Sale Price

2012	8.3%
2013	5.7%

**DALLAS OAKLAWN MONTHLY SALES**



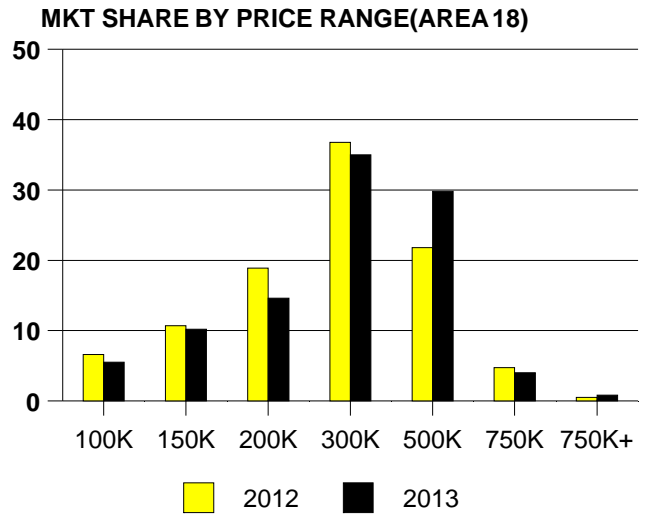
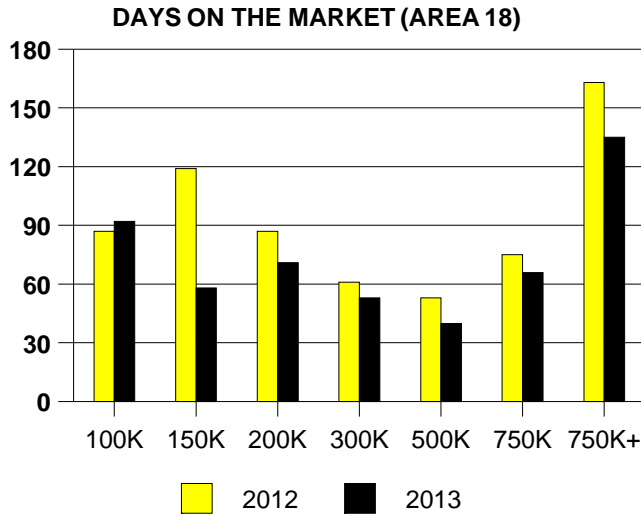
**DALLAS OAKLAWN MONTHS OF INVENTORY**



NTREIS Sold informaton as of 01/08/2014

**CHICAGO TITLE**

	<u>2012</u>	<u>2013</u>
Total Sold Volume	\$ 185,568,116	\$ 227,654,261
Number of Sales	729	840
Median Sale Price	\$ 239,900	\$ 256,000



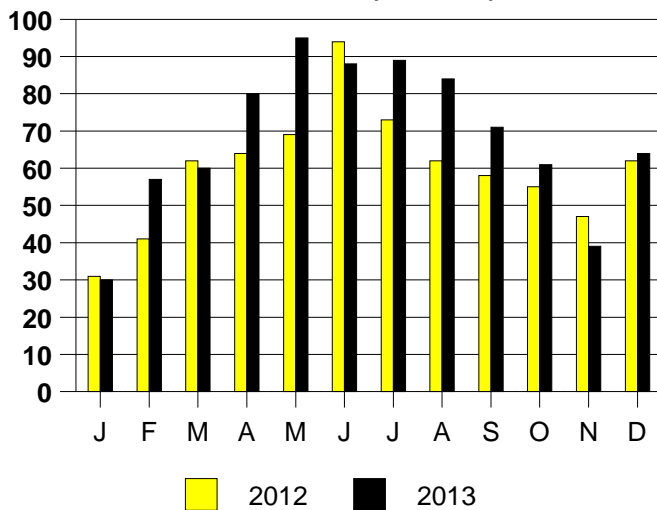
#### SALE/LIST PRICE RATIO

0K-100K	92.5%
101K-150K	98.0%
151K-200K	96.3%
201K-300K	98.0%
301K-500K	98.0%
501K-750K	96.8%
751K+	97.7%

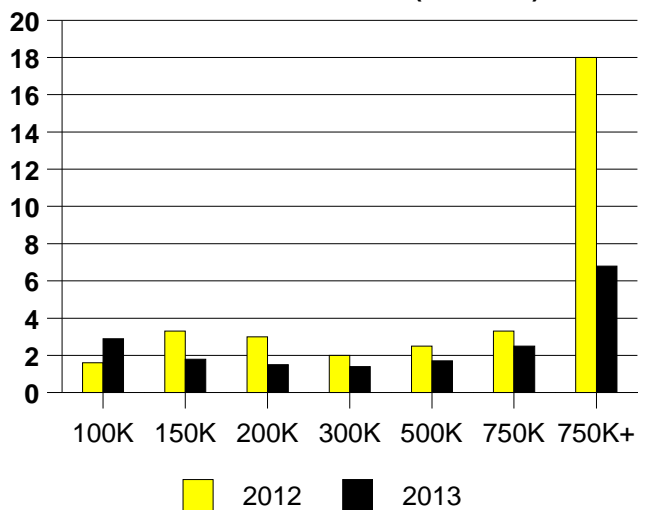
#### AVERAGE OVERPRICING Original List Price to Sale Price

2012	7.3%
2013	5.8%

#### MONTHLY SALES (AREA 18)



#### Inventory not shown where no sales MONTHS OF INVENTORY (AREA 18)



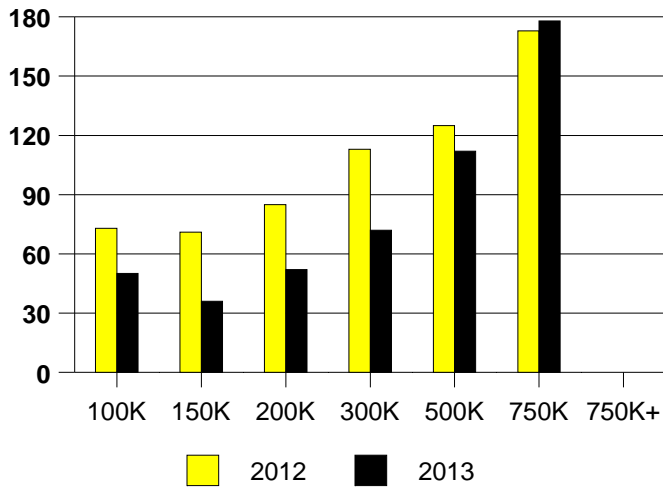
NTREIS Sold informaton as of 01/08/2014

CHICAGO TITLE

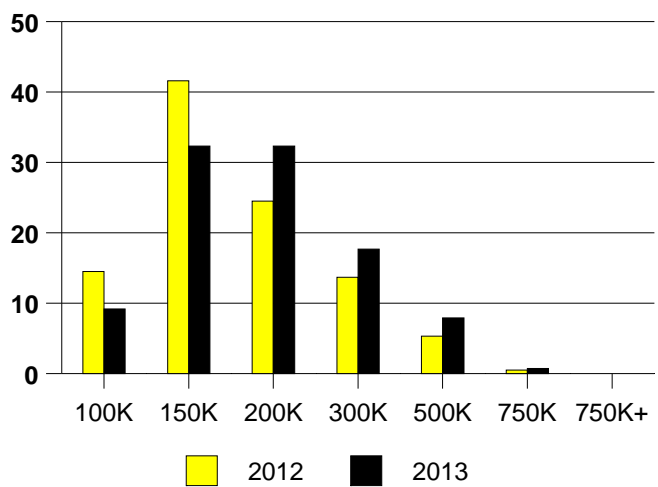


	<u>2012</u>	<u>2013</u>
Total Sold Volume	\$ 187,149,007	\$ 272,535,805
Number of Sales	1161	1513
Median Sale Price	\$ 144,300	\$ 161,000

DAYS ON THE MARKET (DENTON)



DENTON MARKET SHARE BY PRICE RANGE



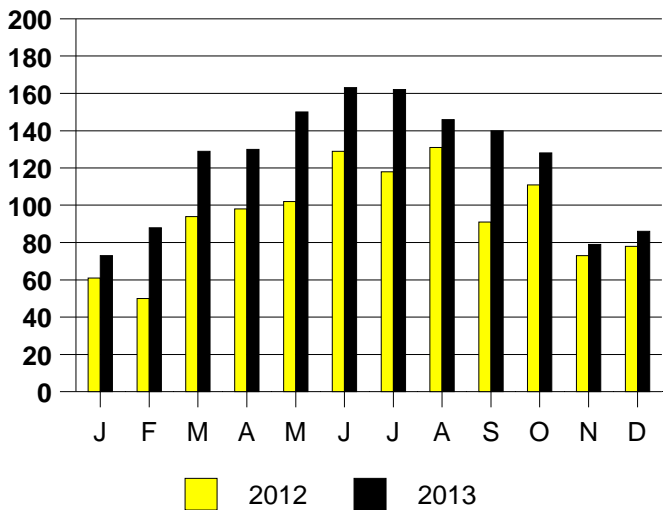
SALE/LIST PRICE RATIO

0K-100K	97.3%
101K-150K	98.3%
151K-200K	98.4%
201K-300K	97.6%
301K-500K	96.0%
501K-750K	95.5%
751K+	NONE

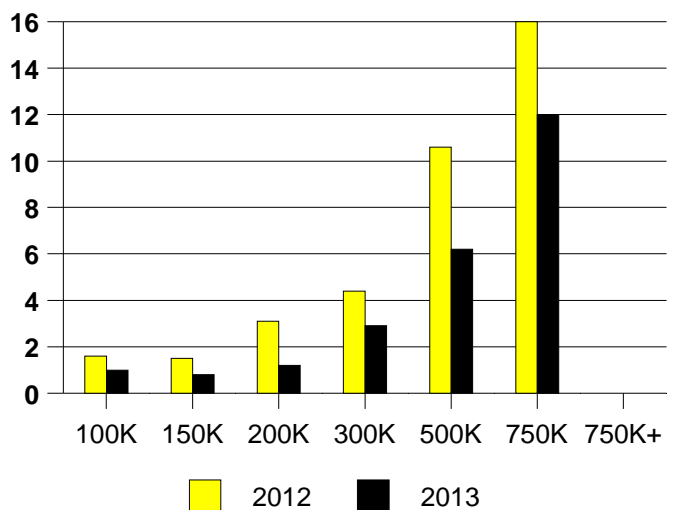
AVERAGE OVERPRICING  
Original List Price to Sale Price

2012	6.3%
2013	3.9%

DENTON MONTHLY SALES



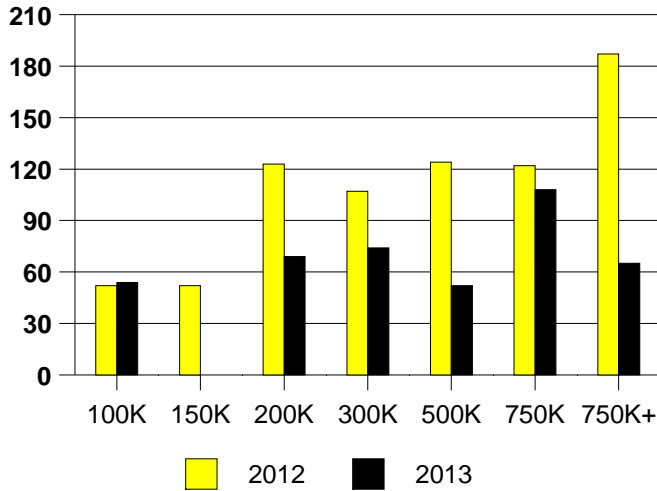
Inventory not shown where no sales  
DENTON MONTHS OF INVENTORY



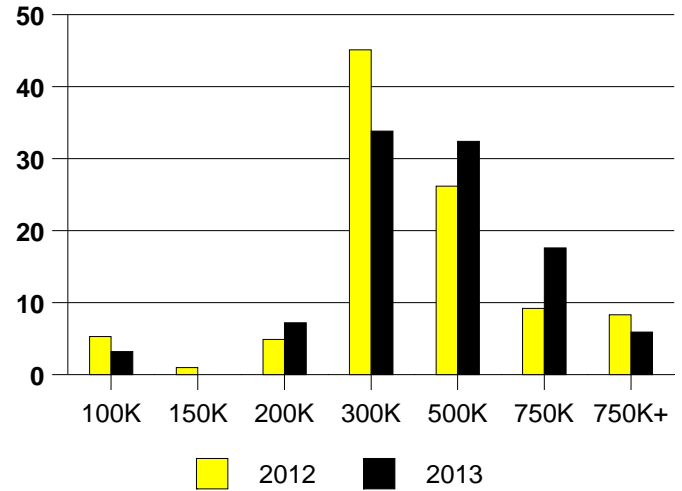
NTREIS Sold informaton as of 01/08/2014

	<u>2012</u>	<u>2013</u>
Total Sold Volume	\$ 76,575,003	\$ 86,907,414
Number of Sales	206	222
Median Sale Price	\$ 278,995	\$ 328,500

**DAYS ON THE MARKET (FAIRVIEW)**



**FAIRVIEW MKT SHARE BY PRICE RANGE**



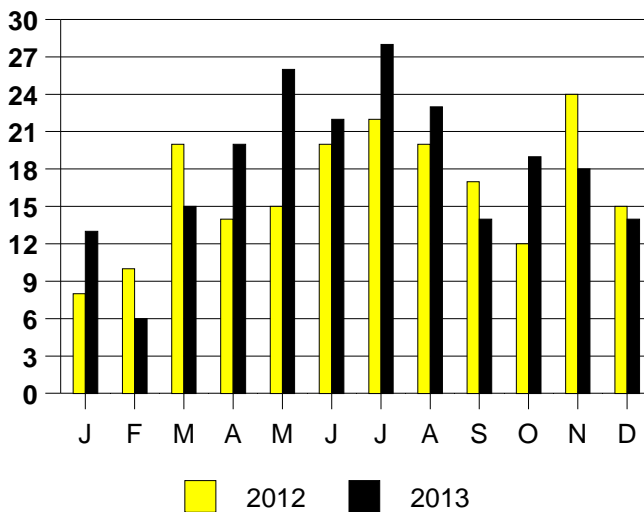
**SALE/LIST PRICE RATIO**

0K-100K	95.5%
101K-150K	NONE
151K-200K	99.2%
201K-300K	98.3%
301K-500K	97.6%
501K-750K	96.3%
751K+	94.2%

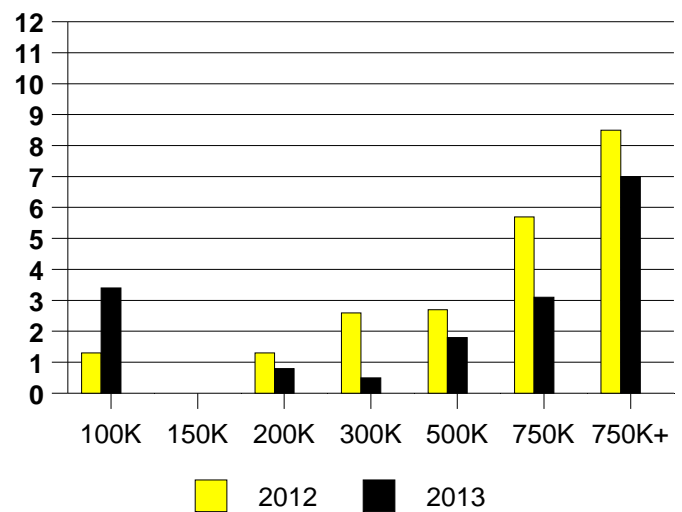
**AVERAGE OVERPRICING**  
Original List Price to Sale Price

2012	6.5%
2013	4.9%

**FAIRVIEW MONTHLY SALES**

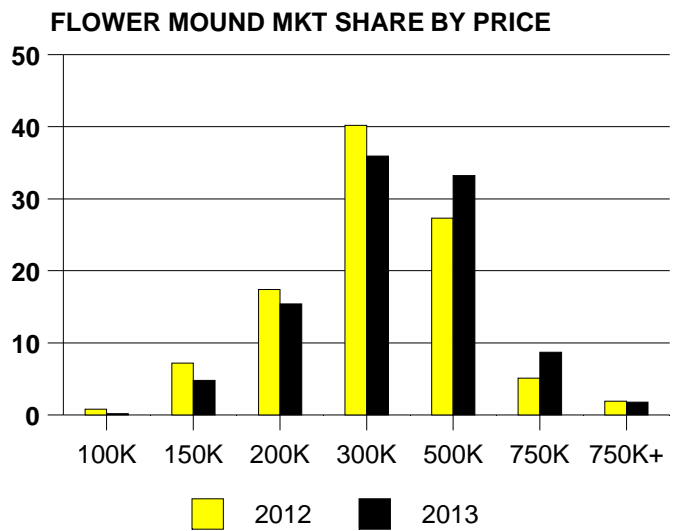
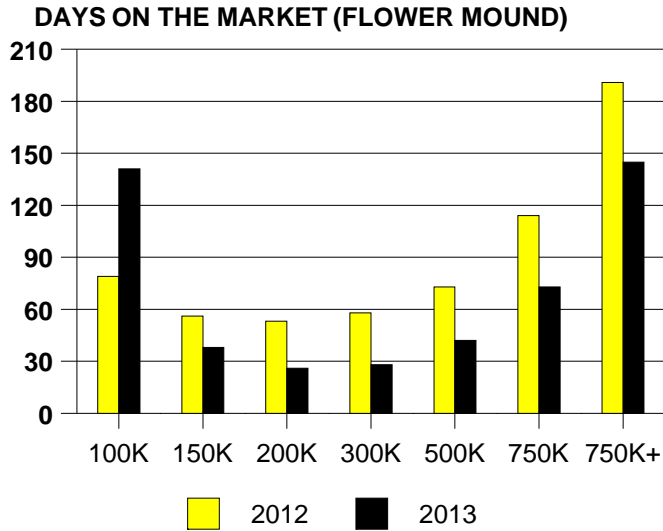


Inventory not shown where no sales  
**FAIRVIEW MONTHS OF INVENTORY**



NTREIS Sold informaton as of 01/08/2014

	<u>2012</u>	<u>2013</u>
Total Sold Volume	\$ 368,913,048	\$ 436,848,303
Number of Sales	1244	1364
Median Sale Price	\$ 260,000	\$ 285,000



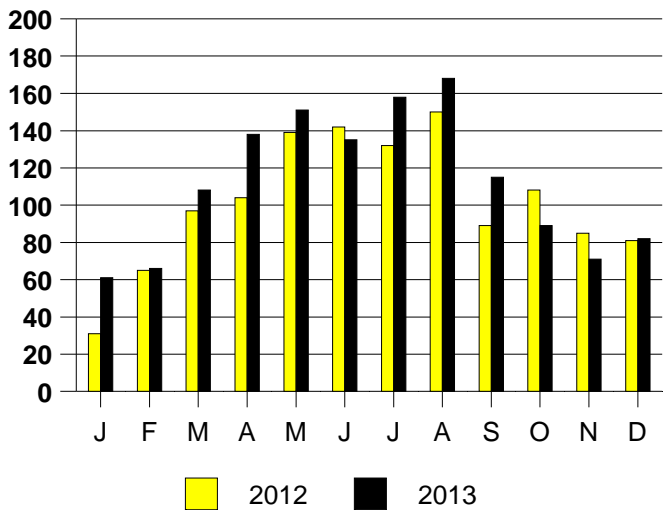
**SALE/LIST PRICE RATIO**

0K-100K	97.9%
101K-150K	97.2%
151K-200K	99.0%
201K-300K	99.2%
301K-500K	98.6%
501K-750K	97.4%
751K+	96.2%

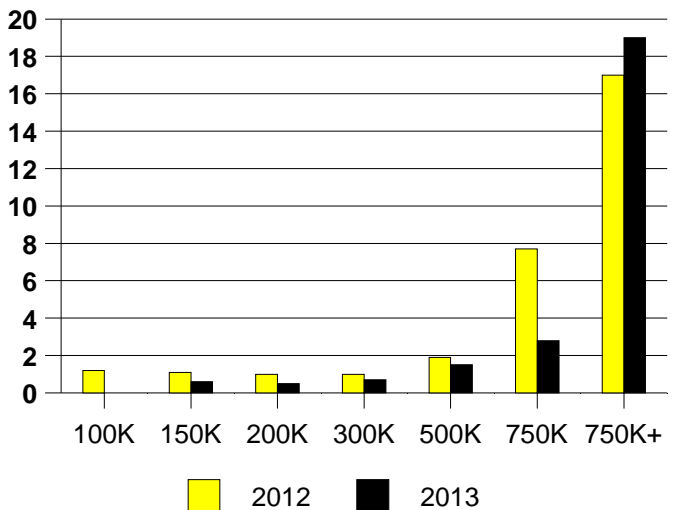
**AVERAGE OVERPRICING**  
Original List Price to Sale Price

2012	5.0%
2013	2.8%

**FLOWER MOUND MONTHLY SALES**



**FLOWER MOUND MONTHS OF INVENTORY**

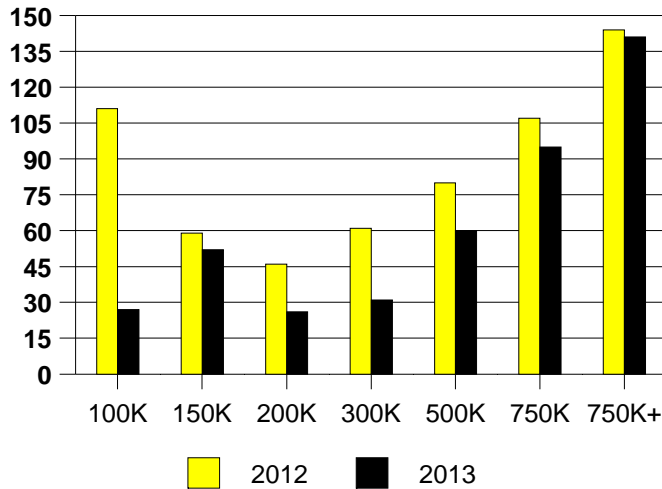


NTREIS Sold informaton as of 01/08/2014

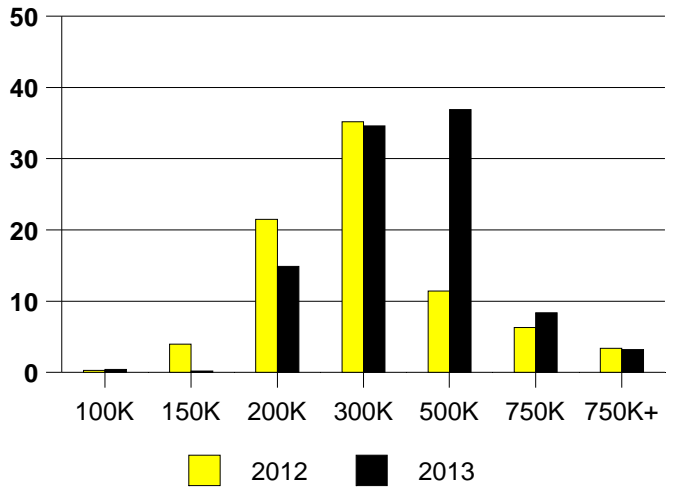
**CHICAGO TITLE**

	<u>2012</u>	<u>2013</u>
Total Sold Volume	\$ 881,701,000	\$ 1,161,793,422
Number of Sales	2775	3411
Median Sale Price	\$ 269,000	\$ 297,000

DAYS ON MARKET(FRISCO)



FRISCO MKT SHARE BY PRICE RANGE



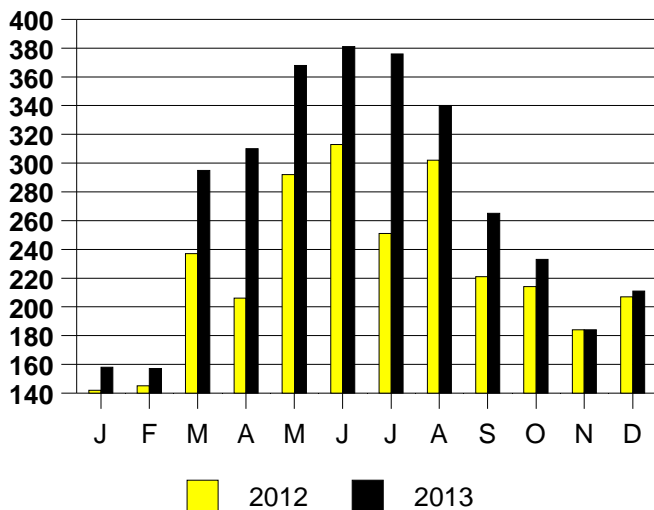
SALE/LIST PRICE RATIO

0K-100K	98.3%
101K-150K	97.8%
151K-200K	99.0%
201K-300K	98.9%
301K-500K	97.1%
501K-750K	96.9%
751K+	95.3%

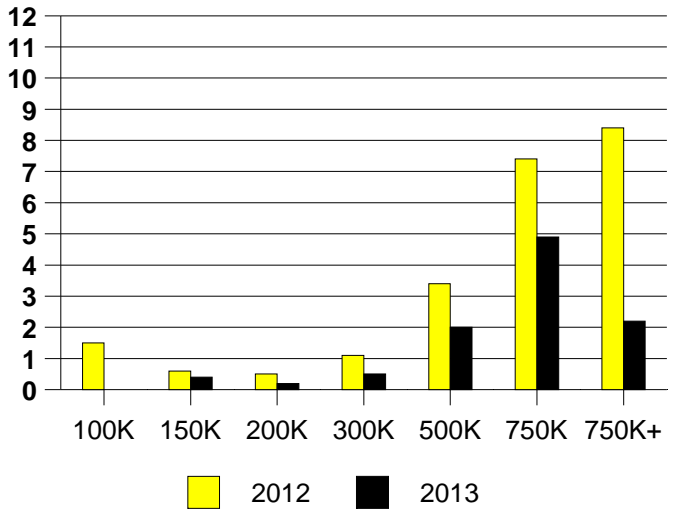
AVERAGE OVERPRICING  
Original List Price to Sale Price

2012	5.4%
2013	3.3%

FRISCO MONTHLY SALES



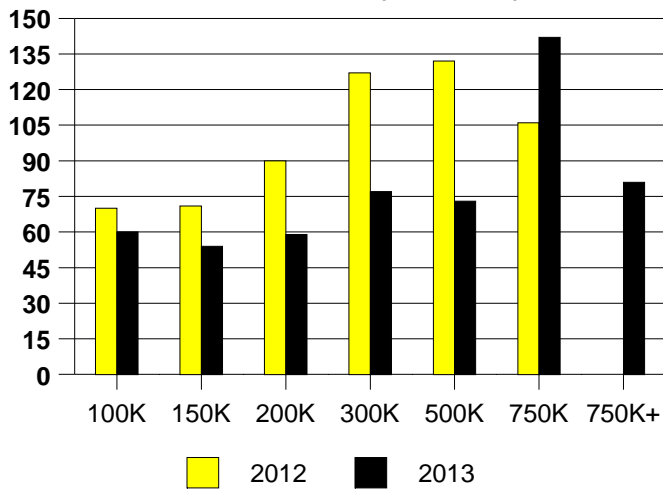
Inventory not shown where no sales  
FRISCO MONTHS OF INVENTORY



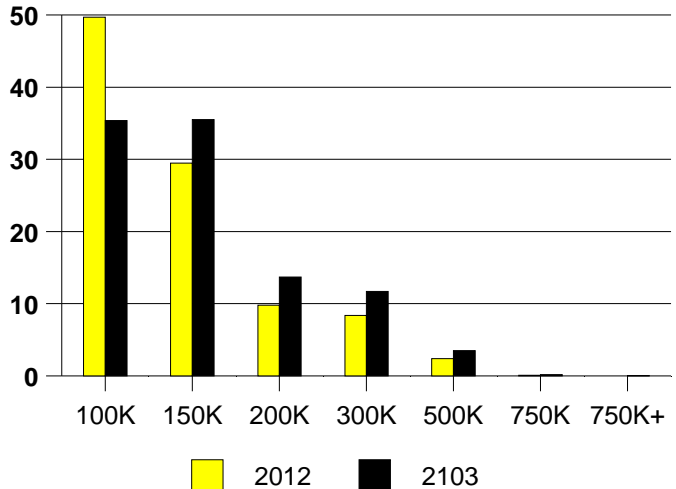
NTREIS Sold informaton as of 01/08/2014

	<u>2012</u>	<u>2013</u>
Total Sold Volume	\$ 229,722,392	\$ 289,789,456
Number of Sales	1963	2112
Median Sale Price	\$ 103,000	\$ 119,986

**DAYS ON THE MARKET (GARLAND)**



**GARLAND MKT SHARE BY PRICE RANGE**



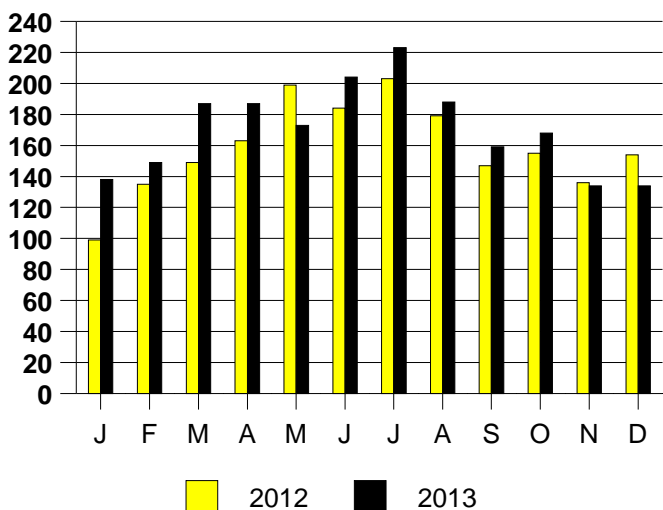
**SALE/LIST PRICE RATIO**

0K-100K	97.8%
101K-150K	98.1%
151K-200K	98.1%
201K-300K	97.2%
301K-500K	96.9%
501K-750K	97.6%
751K+	96.2%

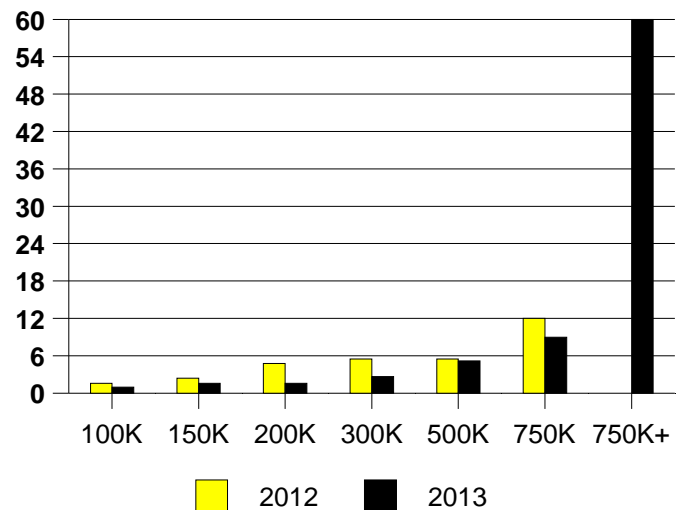
**AVERAGE OVERPRICING**  
Original List Price to Sale Price

2012	13.3%
2013	5.0%

**GARLAND MONTHLY SALES**

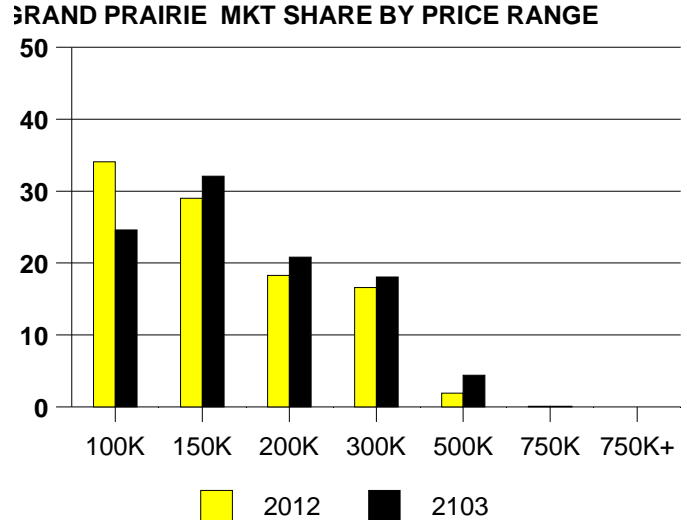
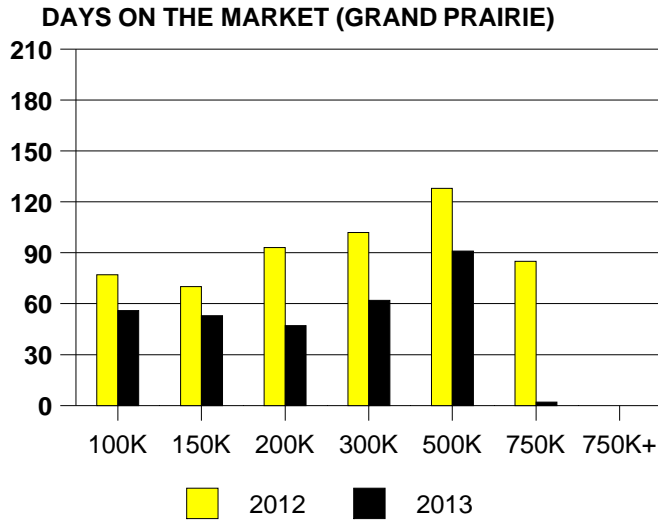


Inventory not shown where no sales  
**GARLAND MONTHS OF INVENTORY**



NTREIS Sold informaton as of 01/08/2014

	<u>2012</u>	<u>2013</u>
Total Sold Volume	\$ 200,165,605	\$ 247,700,316
Number of Sales	1444	1628
Median Sale Price	\$ 129,000	\$ 140,000



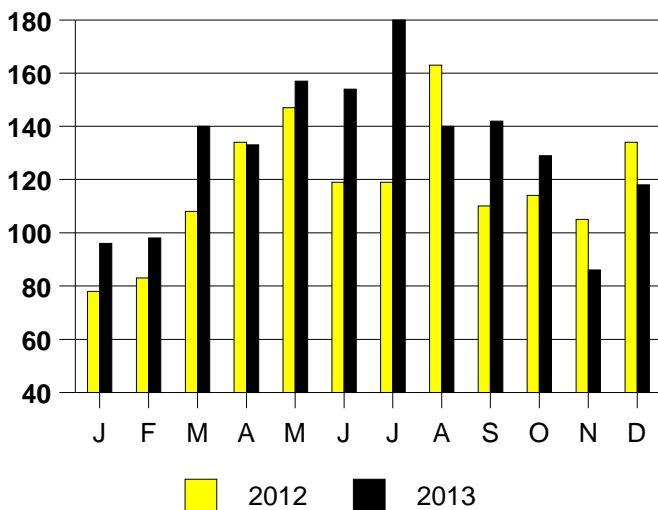
**SALE/LIST PRICE RATIO**

0K-100K	98.6%
101K-150K	98.6%
151K-200K	98.1%
201K-300K	97.7%
301K-500K	97.7%
501K-750K	92.7%
751K+	NONE

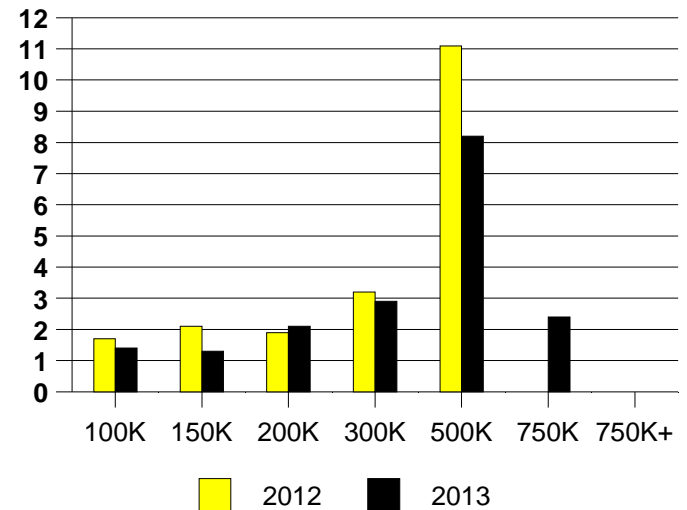
**AVERAGE OVERPRICING**  
Original List Price to Sale Price

2012	6.6%
2013	3.8%

**GRAND PRAIRIE MONTHLY SALES**



**GRAND PRAIRIE MONTHS OF INVENTORY**

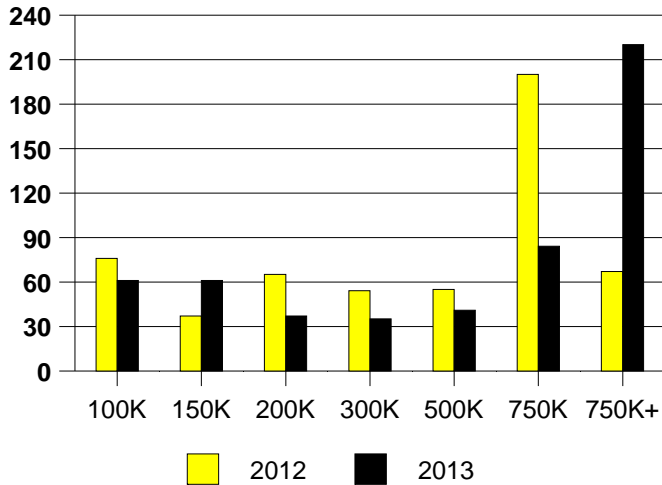


NTREIS Sold informaton as of 01/08/2014

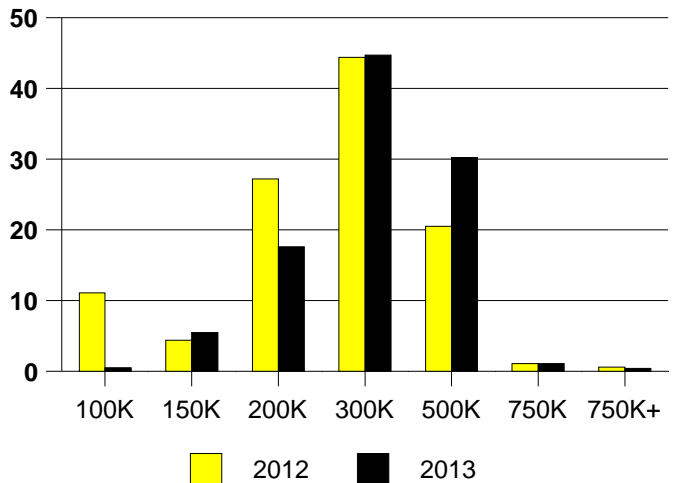
**CHICAGO TITLE**

	<u>2012</u>	<u>2013</u>
Total Sold Volume	\$ 131,383,310	\$ 149,637,927
Number of Sales	522	562
Median Sale Price	\$ 237,000	\$ 253,350

**DAYS ON THE MARKET (GRAPEVINE)**



**GRAPEVINE MKT SHARE BY PRICE RANGE**



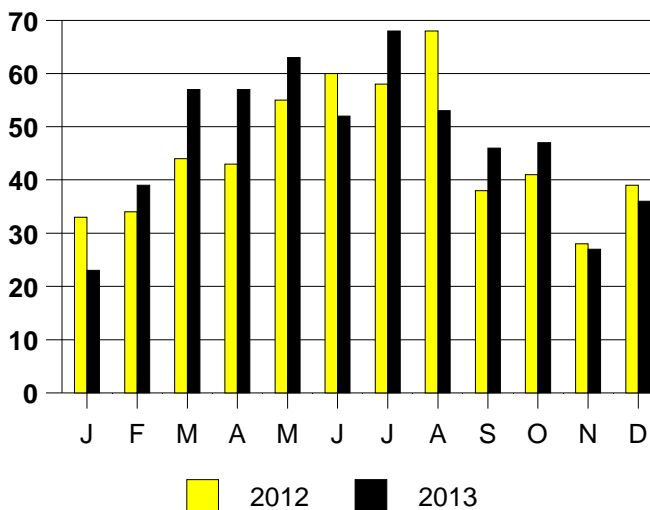
**SALE/LIST PRICE RATIO**

0K-100K	94.9%
101K-150K	97.8%
151K-200K	98.5%
201K-300K	98.7%
301K-500K	98.3%
501K-750K	92.8%
751K+	86.3%

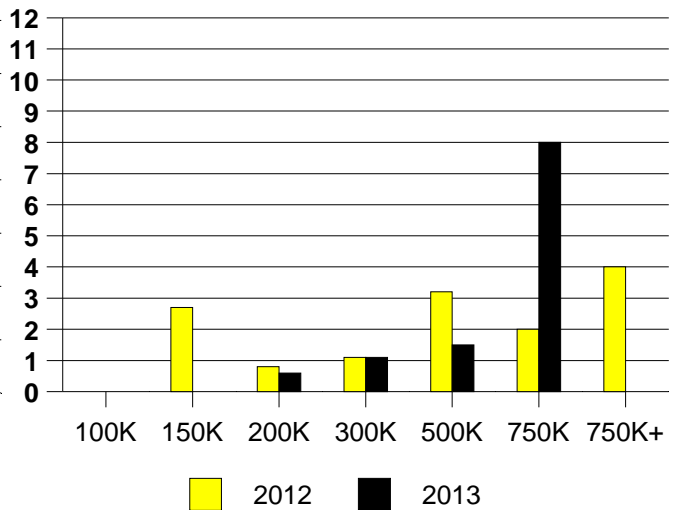
**AVERAGE OVERPRICING**  
Original List Price to Sale Price

2012	4.4%
2013	3.0%

**GRAPEVINE MONTHLY SALES**



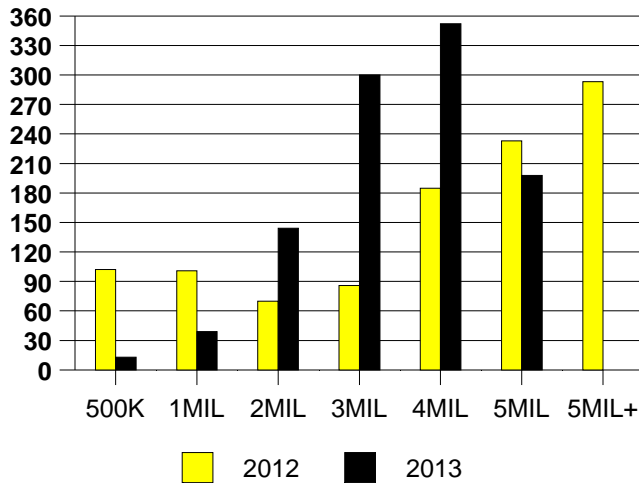
Inventory not shown where no sales  
**GRAPEVINE MONTHS OF INVENTORY**



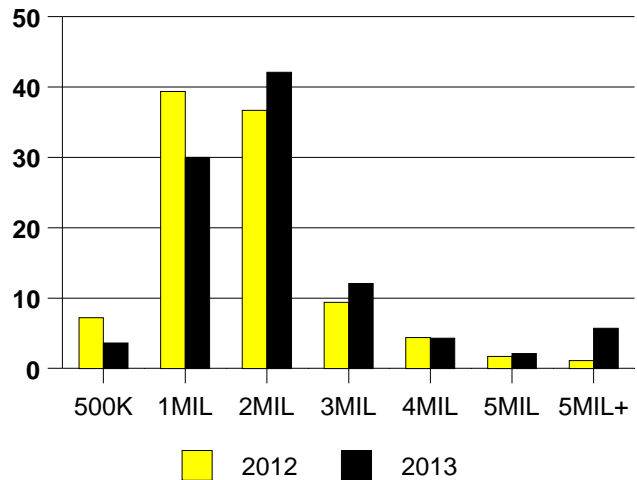
NTREIS Sold informaton as of 01/08/2014

	<u>2012</u>	<u>2013</u>
Total Sold Volume	\$ 251,036,457	\$ 249,466,615
Number of Sales	180	140
Median Sale Price	\$ 1,107,500	\$ 1,390,500

**DAYS ON THE MARKET (HP)**



**MKT SHARE BY PRICE RANGE (HP)**



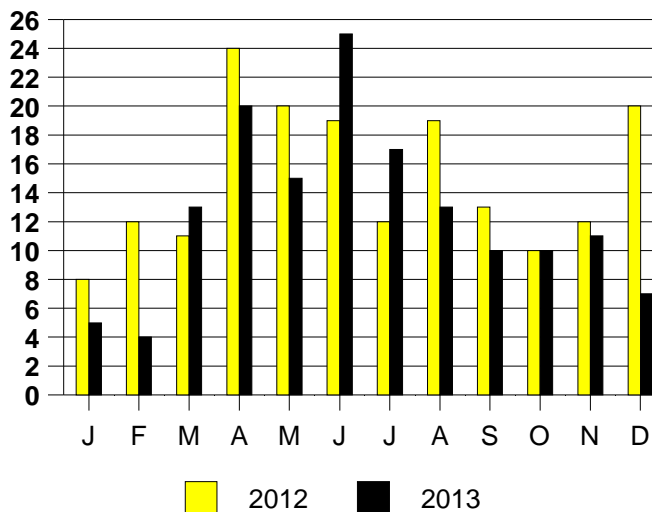
**SALE/LIST PRICE RATIO**

0K-500K	98.3%
501K-1MIL	96.7%
1MIL-2MIL	95.0%
2MIL-3MIL	93.0%
3MIL-4MIL	92.9%
4MIL-5MIL	91.5%
5MIL+	91.6%

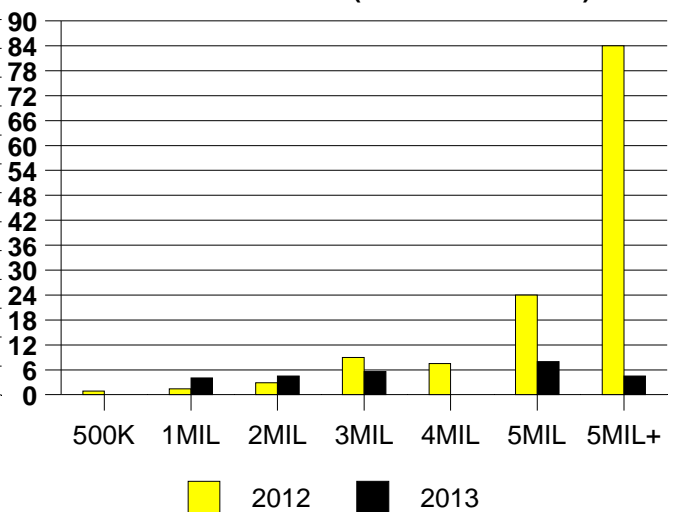
**AVERAGE OVERPRICING**

Orig List Price to Sale Price	
2012	8.5%
2013	8.6%

**HIGHLAND PARK MONTHLY SALES**



**MONTHS OF INVENTORY (HIGHLAND PARK)**  
Inventory not shown where no sales

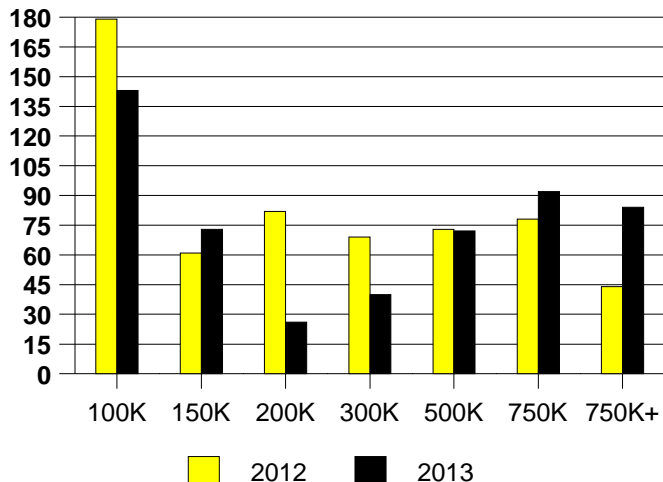


NTREIS Sold information as of 01/08/2014

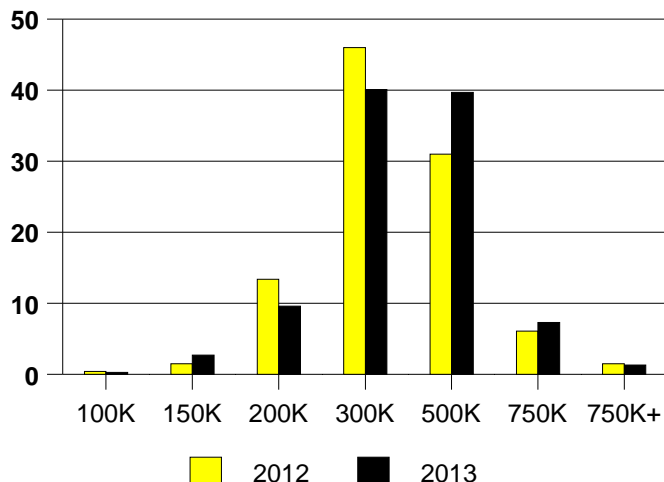


	<u>2012</u>	<u>2013</u>
Total Sold Volume	\$ 81,412,987	\$ 99,497,766
Number of Sales	261	302
Median Sale Price	\$ 275,000	\$ 299,500

**DAYS ON THE MARKET(HV)**



**% MARKET SHARE BY PRICE RANGE HV**



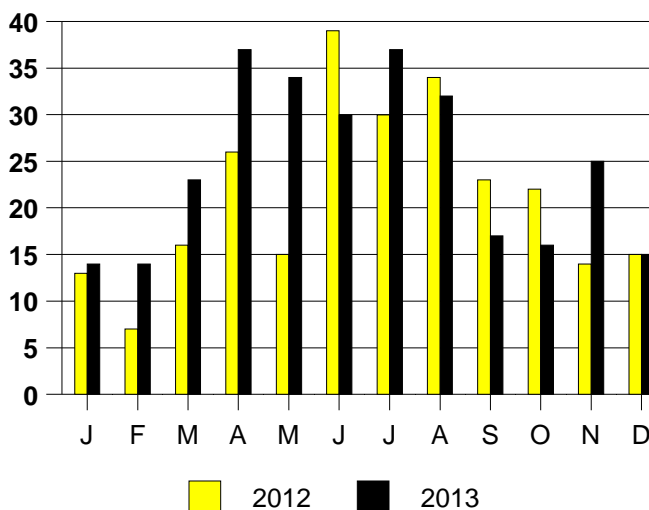
**SALE/LIST PRICE RATIO**

0K-100K	82.6%
101K-150K	94.0%
151K-200K	97.4%
201K-300K	98.7%
301K-500K	97.8%
501K-750K	97.0%
751K+	96.0%

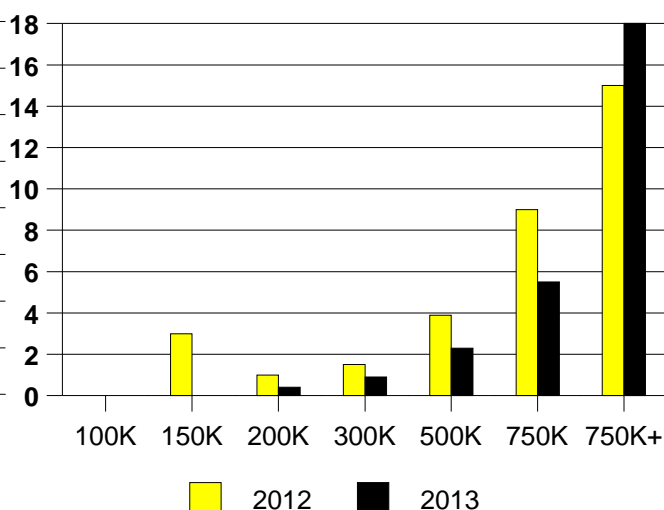
**AVERAGE OVERPRICING**

Original List Price to Sale Price	
2012	5.2%
2013	3.9%

**HIGH VILLAGE MONTHLY SALES**



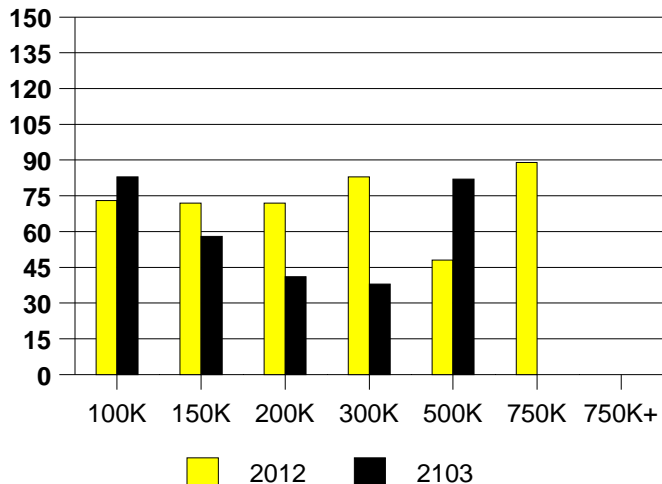
**HIGHLAND VILLAGE MONTHS OF INVENTORY**



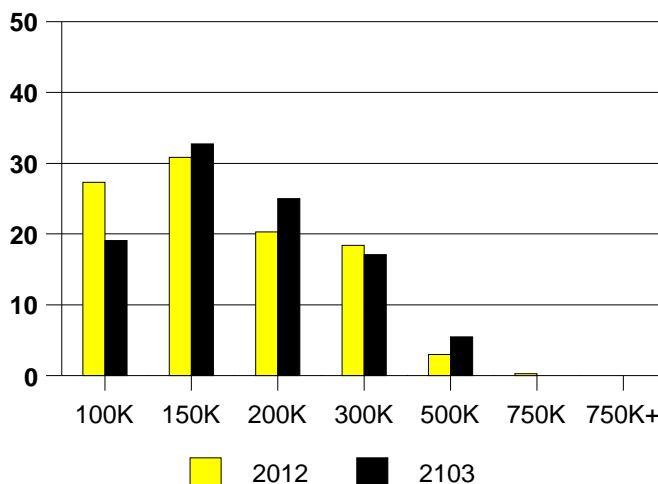
NTREIS Sold informaton as of 01/08/2014

	<u>2012</u>	<u>2013</u>
Total Sold Volume	\$ 55,772,710	\$ 78,603,733
Number of Sales	370	492
Median Sale Price	\$ 137,500	\$ 146,000

**DAYS ON THE MARKET (HURST)**



**HURST MKT SHARE BY PRICE RANGE**



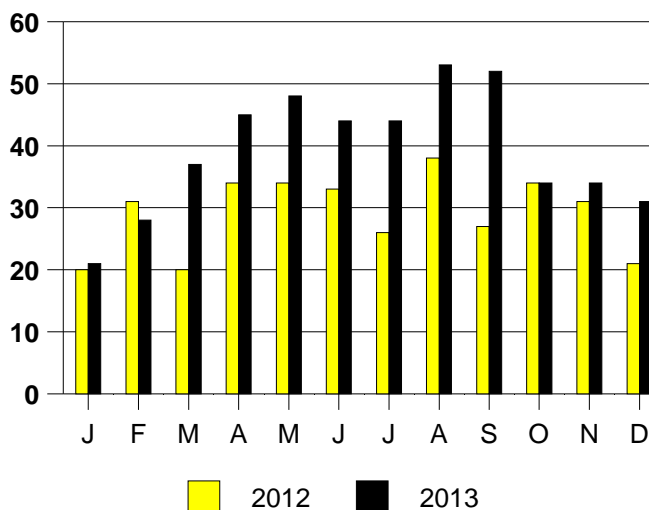
**SALE/LIST PRICE RATIO**

0K-100K	96.3%
101K-150K	98.3%
151K-200K	98.4%
201K-300K	98.8%
301K-500K	97.8%
501K-750K	NONE
751K+	NONE

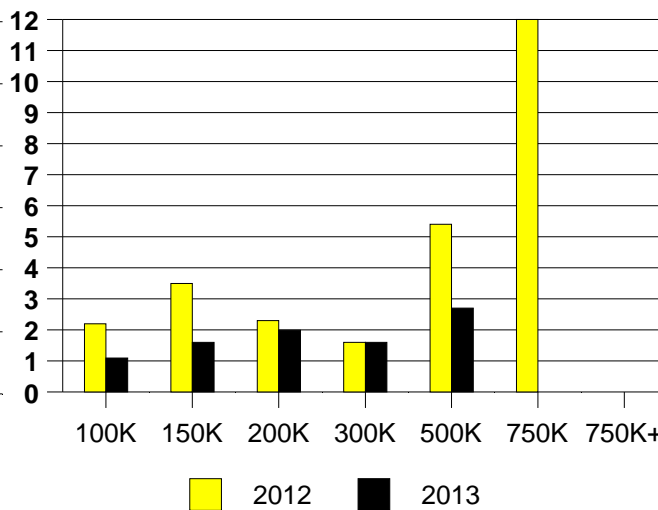
**AVERAGE OVERPRICING**  
Original List Price to Sale Price

2012	7.2%
2013	4.6%

**HURST MONTHLY SALES**

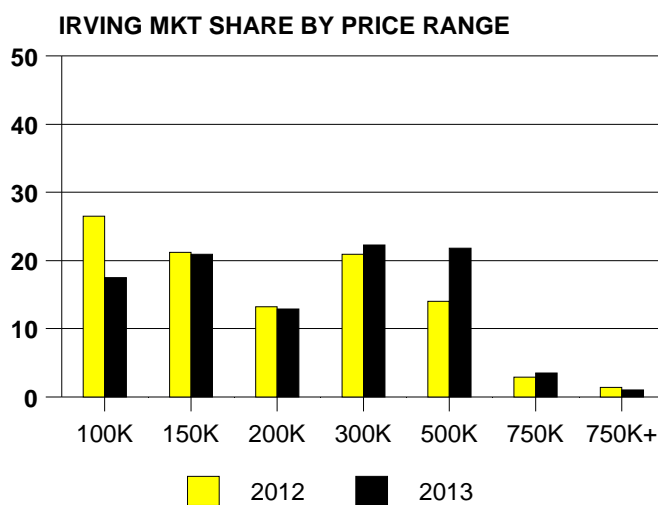
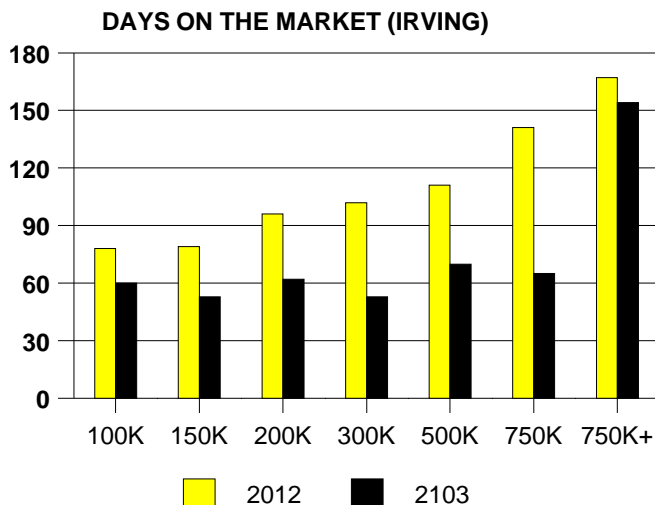


Inventory not shown where no sales  
**HURST MONTHS OF INVENTORY**



NTREIS Sold informaton as of 01/08/2014

	<u>2012</u>	<u>2013</u>
Total Sold Volume	\$ 271,914,067	\$ 357,797,137
Number of Sales	1347	1550
Median Sale Price	\$ 160,000	\$ 195,000



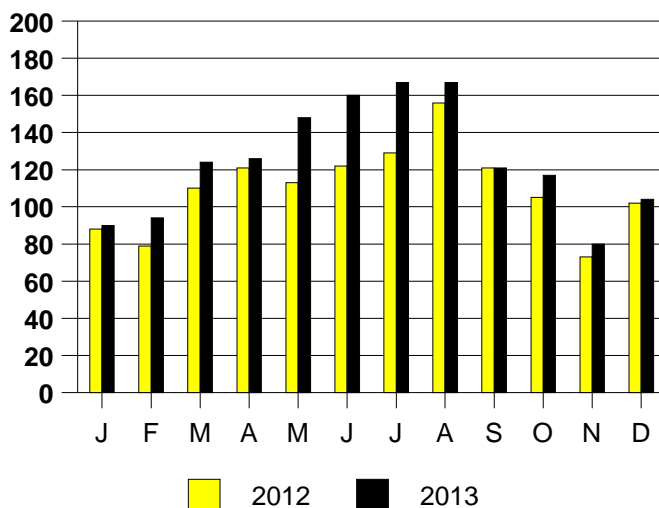
**SALE/LIST PRICE RATIO**

0K-100K	98.8%
101K-150K	97.7%
151K-200K	97.2%
201K-300K	97.6%
301K-500K	96.4%
501K-750K	95.7%
751K+	94.7%

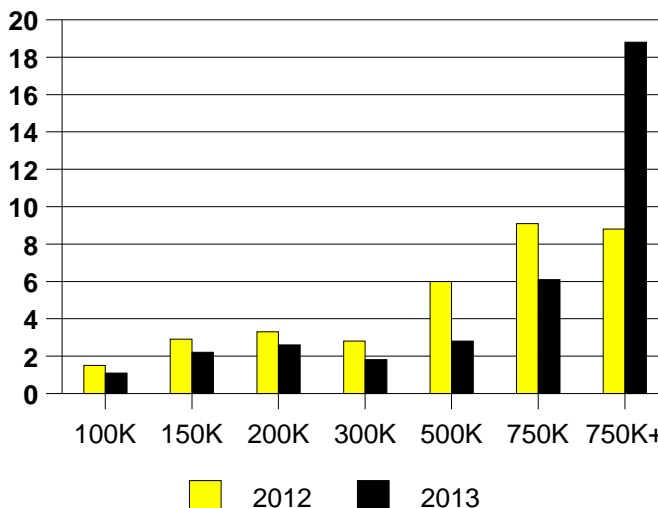
**AVERAGE OVERPRICING**  
Original List Price to Sale Price

2012	7.7%
2013	5.1%

**IRVING MONTHLY SALES**



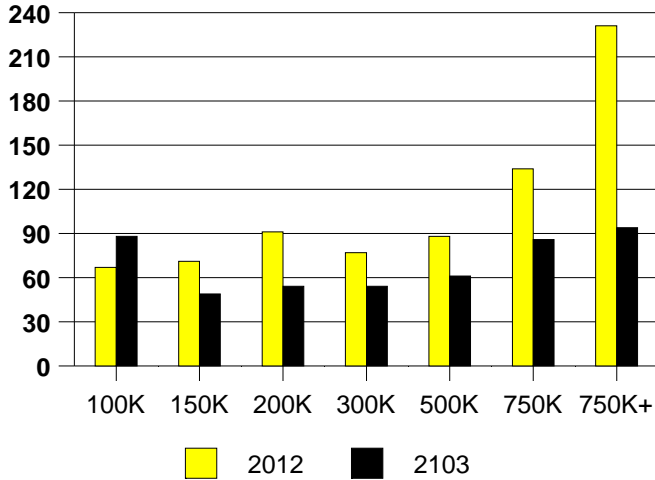
Inventory not shown where no sales  
**IRVING MONTHS OF INVENTORY**



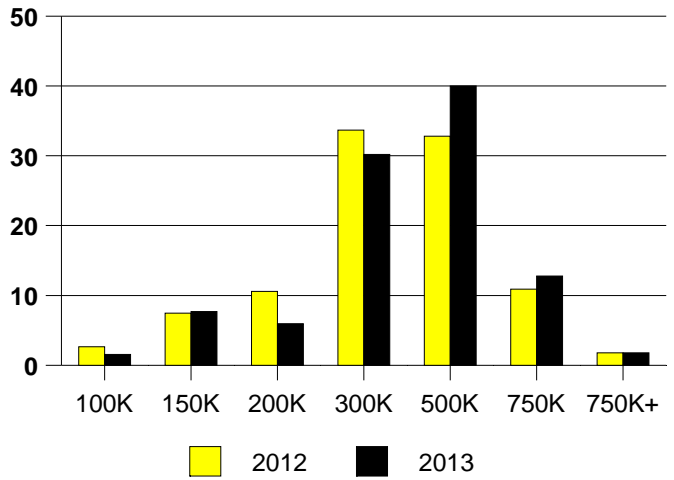
NTREIS Sold informaton as of 01/08/2014

	<u>2012</u>	<u>2013</u>
Total Sold Volume	\$ 255,943,455	\$ 330,377,498
Number of Sales	789	953
Median Sale Price	\$ 289,900	\$ 315,000

**DAYS ON THE MARKET (KELLER)**



**KELLER MKT SHARE BY PRICE RANGE**



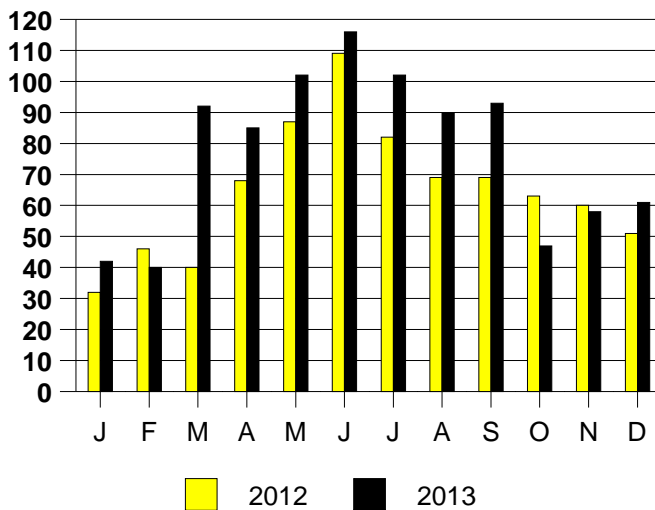
**SALE/LIST PRICE RATIO**

0K-100K	95.9%
101K-150K	97.6%
151K-200K	97.0%
201K-300K	98.5%
301K-500K	98.0%
501K-750K	97.8%
751K+	97.2%

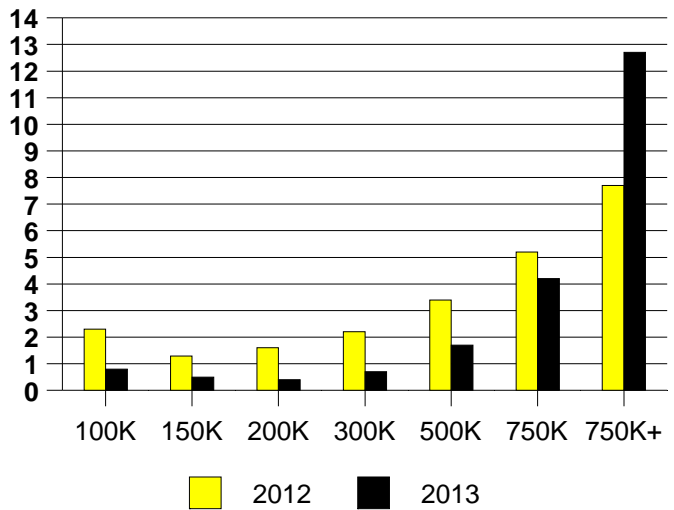
**AVERAGE OVERPRICING**  
Original List Price to Sale Price

2012	6.2%
2013	3.6%

**KELLER MONTHLY SALES**



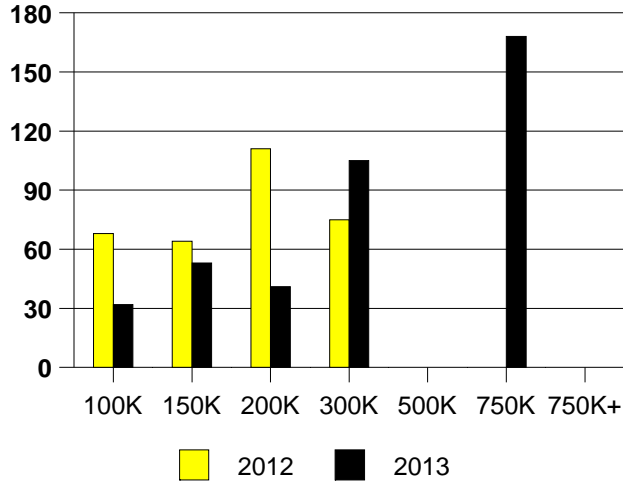
Inventory not shown where no sales  
**KELLER MONTHS OF INVENTORY**



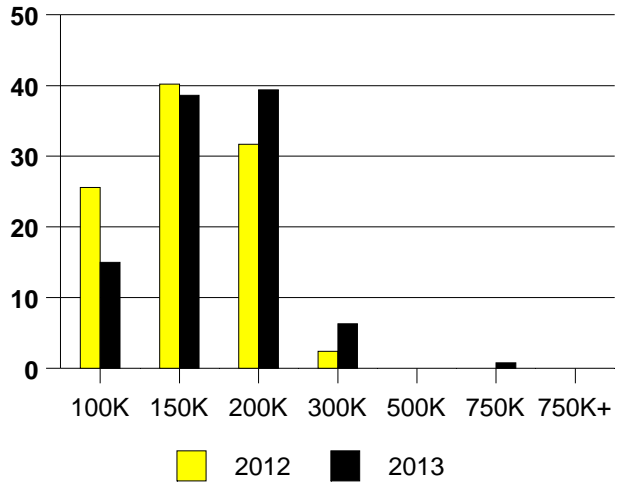
NTREIS Sold informaton as of 01/08/2014

	<u>2012</u>	<u>2013</u>
Total Sold Volume	\$ 10,626,844	\$ 18,654,885
Number of Sales	82	127
Median Sale Price	\$ 134,950	\$ 148,500

**LAKE DALLAS DAYS ON THE MARKET**



**LAKE DALLAS MKT SHARE BY PRICE RANGE**



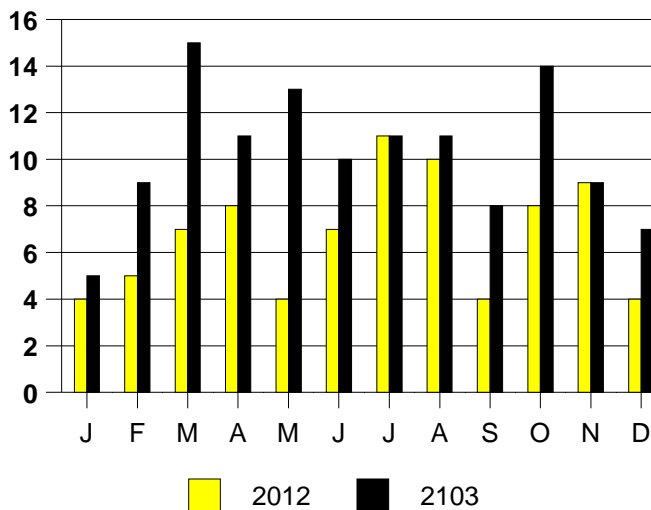
**SALE/LIST PRICE RATIO**

0K-100K	97.9%
101K-150K	99.3%
151K-200K	99.0%
201K-300K	97.6%
301K-500K	NONE
501K-750K	93.6%
751K+	NONE

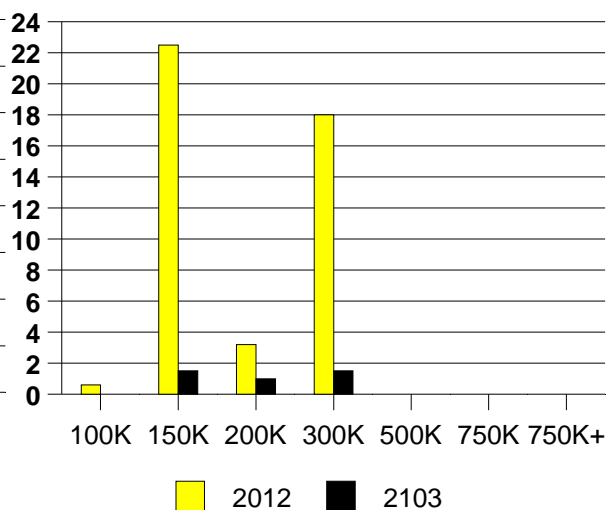
**AVERAGE OVERPRICING**  
Original List Price to Sale Price

2012	5.9%
2013	3.6%

**LAKE DALLAS MONTHLY SALES**



**LAKE DALLAS MONTHS OF INVENTORY**



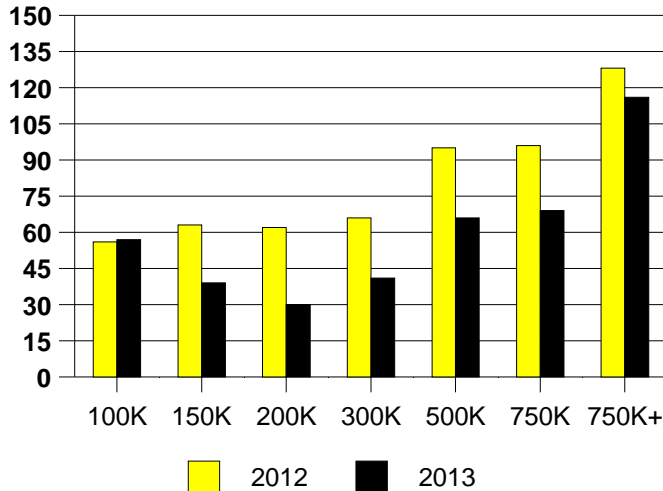
Inventory not shown where no sales

NTREIS Sold informaton as of 01/08/2014

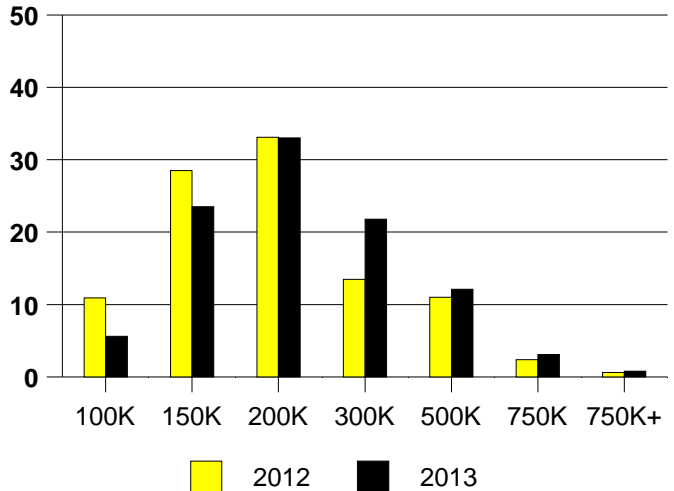
**CHICAGO TITLE**

	<u>2012</u>	<u>2013</u>
Total Sold Volume	\$ 228,499,992	\$ 268,568,611
Number of Sales	1156	1229
Median Sale Price	\$ 165,000	\$ 182,000

**DAYS ON THE MARKET (LEWISVILLE)**



**LEWISVILLE MKT SHARE BY PRICE RANGE**



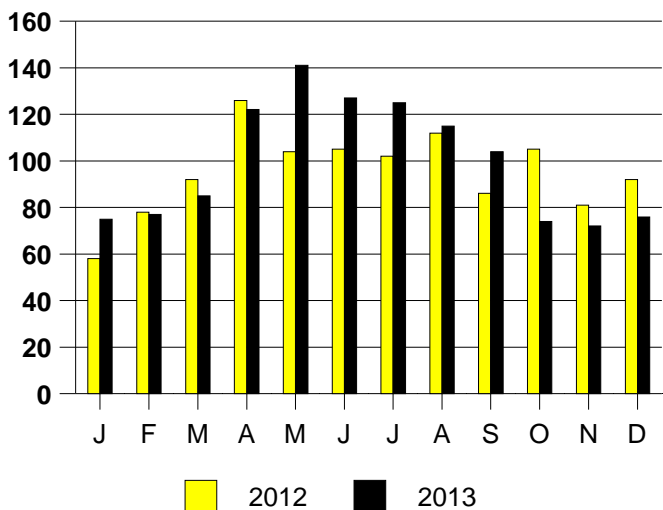
**SALE/LIST PRICE RATIO**

0K-100K	97.9%
101K-150K	98.4%
151K-200K	98.9%
201K-300K	98.4%
301K-500K	96.3%
501K-750K	98.6%
751K+	93.5%

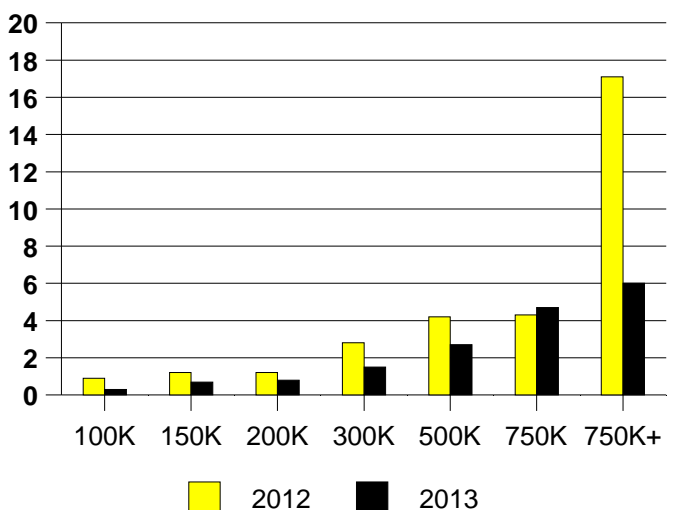
**AVERAGE OVERPRICING**  
Original List Price to Sale Price

2012	5.2%
2013	3.1%

**LEWISVILLE MONTHLY SALES**



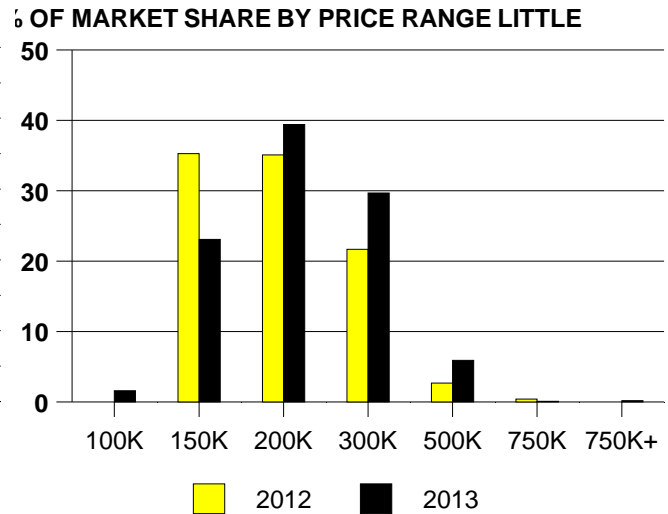
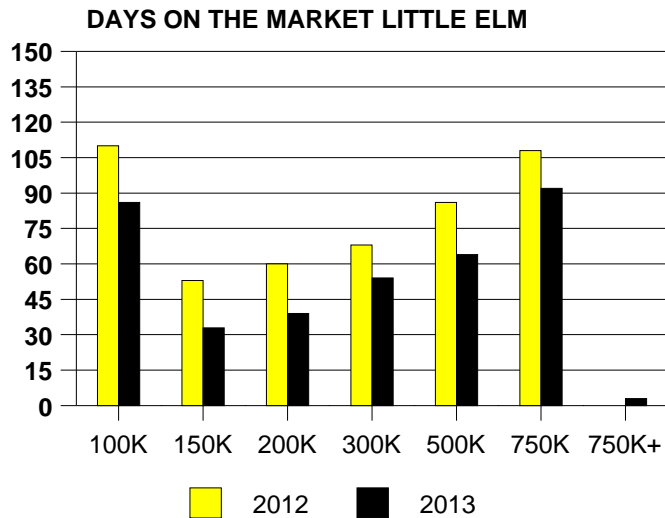
Inventory not shown where no sales  
**LEWISVILLE MONTHS OF INVENTORY**



NTREIS Sold informaton as of 01/08/2014

**CHICAGO TITLE**

	<u>2012</u>	<u>2013</u>
Total Sold Volume	\$ 162,421,643	\$ 222,443,560
Number of Sales	939	1134
Median Sale Price	\$ 162,000	\$ 180,000



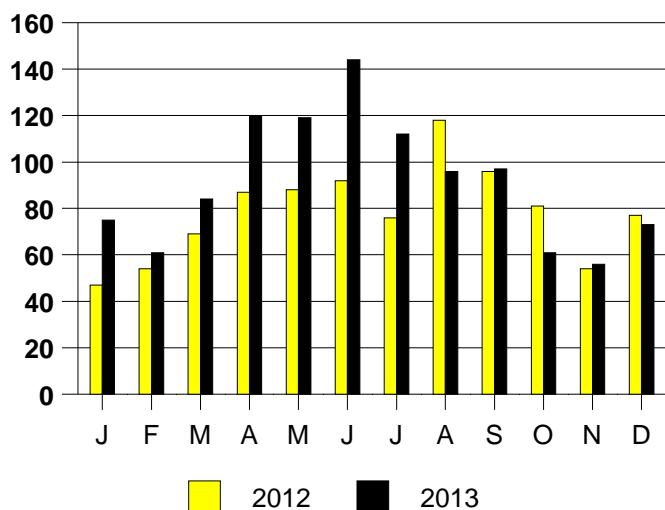
#### SALE/LIST PRICE RATIO

0K-100K	94.7%
101K-150K	98.9%
151K-200K	98.8%
201K-300K	98.5%
301K-500K	98.8%
501K-750K	96.4%
751K+	93.8%

#### AVERAGE OVERPRICING Original List Price to Sale Price

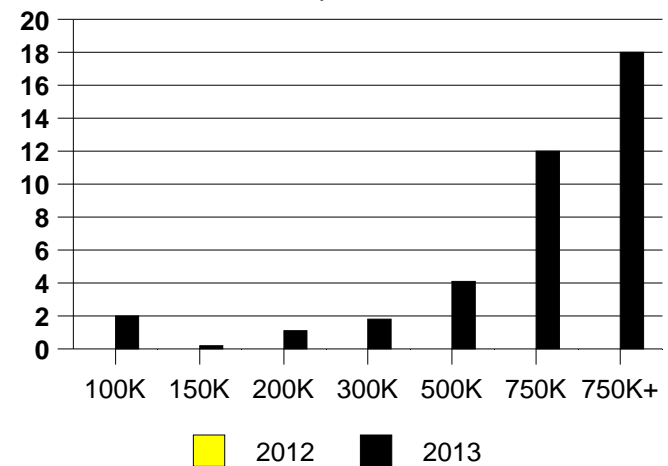
2012	4.5%
2013	2.4%

#### LITTLE ELM MONTHLY SALES



#### Inventory not shown where no sales MONTHS OF INVENTORY LITTLE ELM

2012 Inventory not available

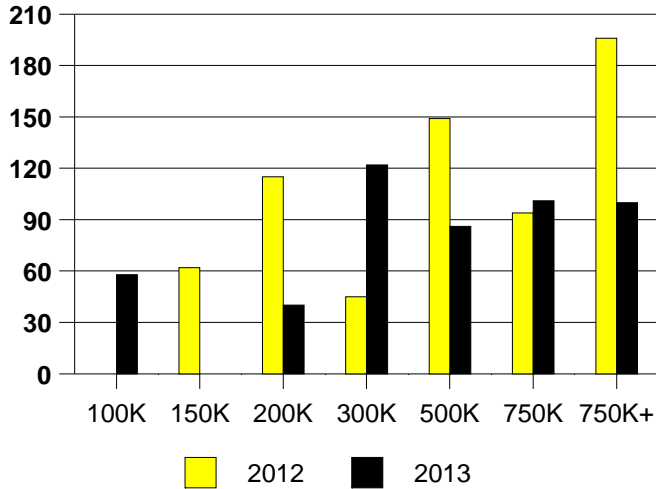


NTREIS Sold informaton as of 01/08/2014

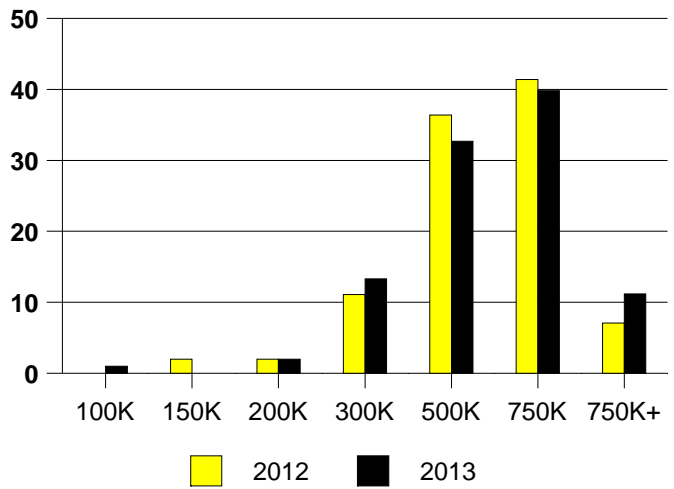
CHICAGO TITLE

	<u>2012</u>	<u>2013</u>
Total Sold Volume	\$ 50,309,813	\$ 49,560,801
Number of Sales	99	98
Median Sale Price	\$ 490,000	\$ 507,000

DAYS ON THE MARKET (LUCAS)



LUCAS MKT SHARE BY PRICE RANGE



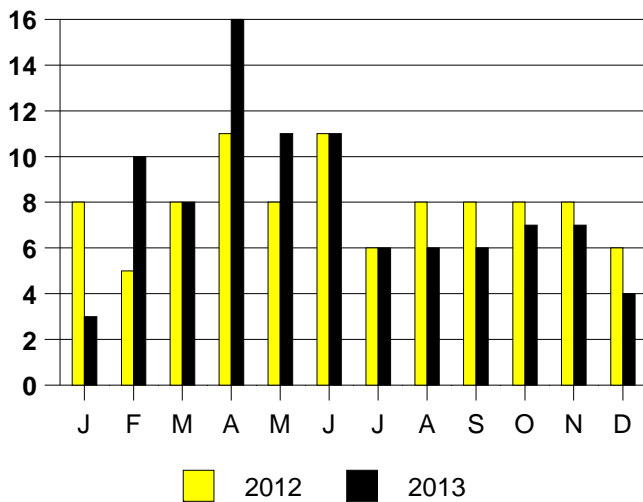
**SALE/LIST PRICE RATIO**

0K-100K	93.4%
101K-150K	NONE
151K-200K	97.1%
201K-300K	97.9%
301K-500K	97.2%
501K-750K	97.4%
751K+	98.1%

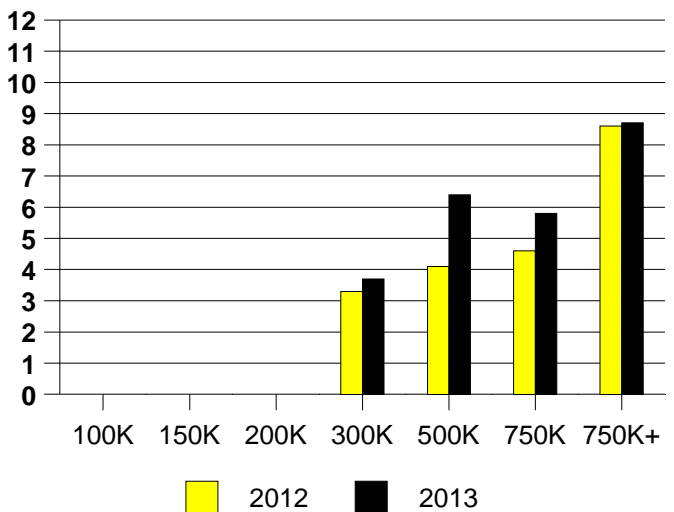
**AVERAGE OVERPRICING**  
Original List Price to Sale Price

2012	4.4%
2013	4.0%

LUCAS MONTHLY SALES



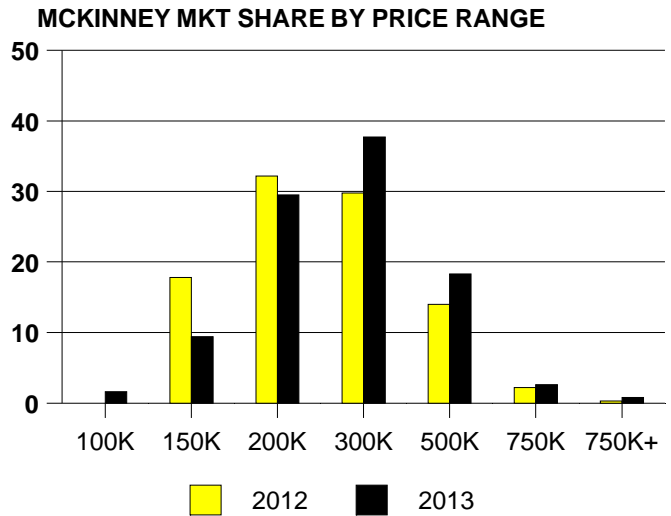
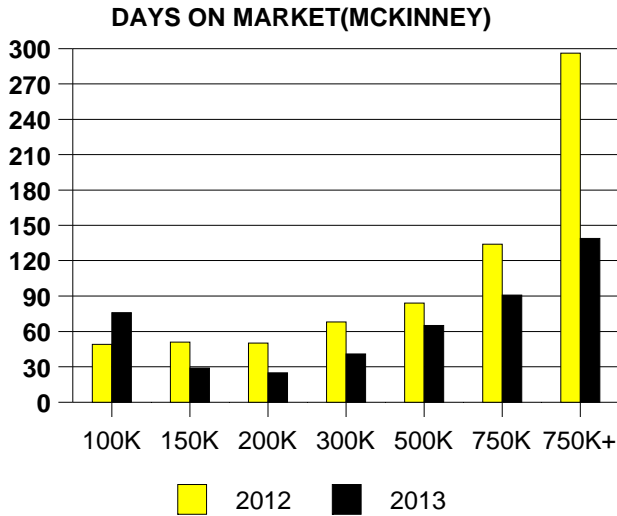
Inventory not shown where no sales  
**LUCAS MONTHS OF INVENTORY**



NTREIS Sold informaton as of 01/08/2014



	<u>2012</u>	<u>2013</u>
Total Sold Volume	\$ 646,418,152	\$ 895,449,938
Number of Sales	2876	3583
Median Sale Price	\$ 194,000	\$ 221,300



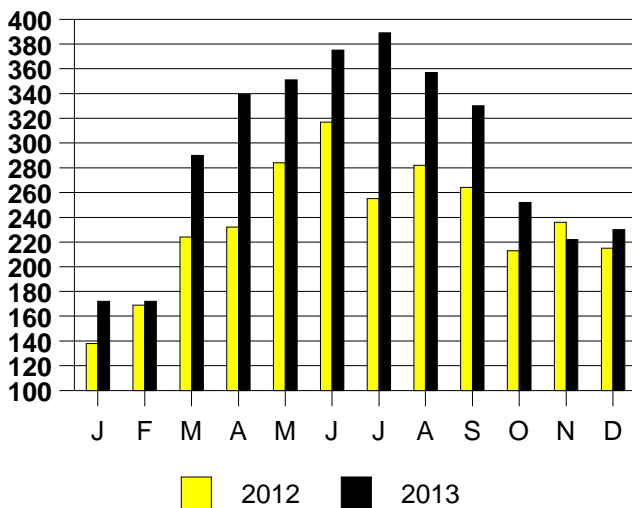
**SALE/LIST PRICE RATIO**

0K-100K	96.9%
101K-150K	98.7%
151K-200K	99.2%
201K-300K	98.3%
301K-500K	97.3%
501K-750K	97.2%
751K+	96.2%

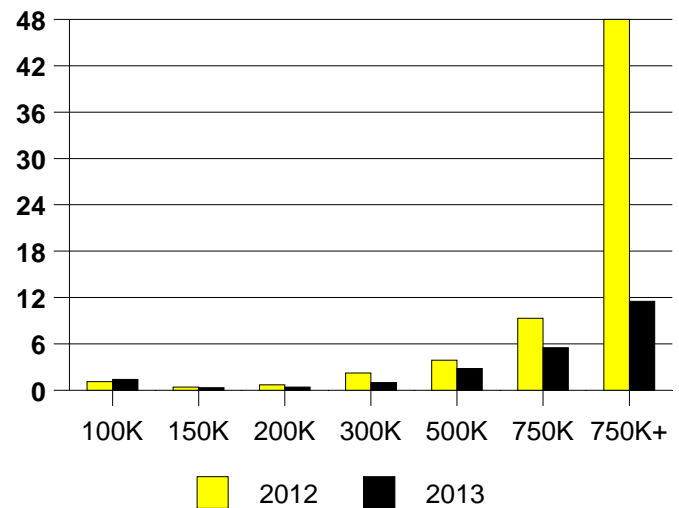
**AVERAGE OVERPRICING**  
Original List Price to Sale Price

2012	4.7%
2013	2.9%

**MCKINNEY MONTHLY SALES**



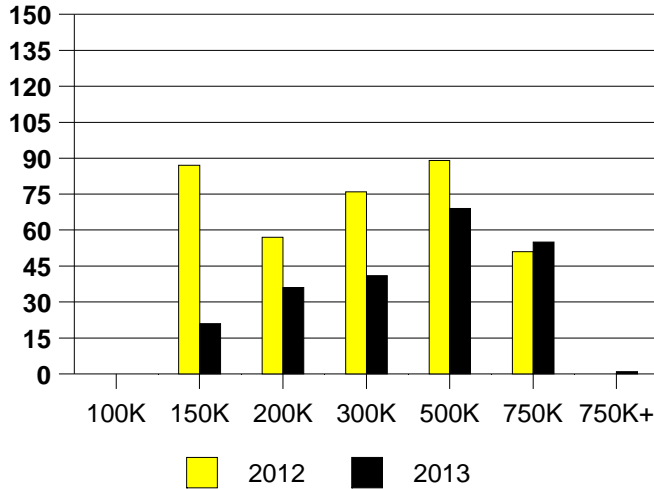
Inventory not shown where no sales  
**MCKINNEY MONTHS OF INVENTORY**



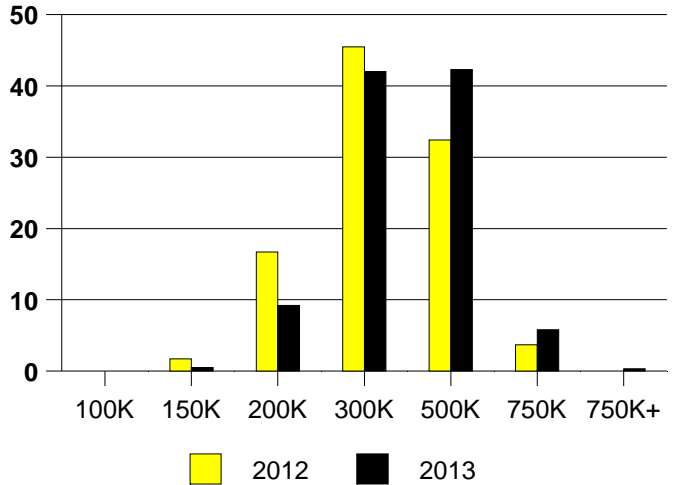
NTREIS Sold informaton as of 01/08/2014

	2012	2013
Total Sold Volume	\$85,382,449	\$ 121,113,360
Number of Sales	299	381
Median Sale Price	\$ 263,000	\$ 295,100

DAYS ON THE MARKET (MURPHY)



MURPHY MKT SHARE BY PRICE RANGE



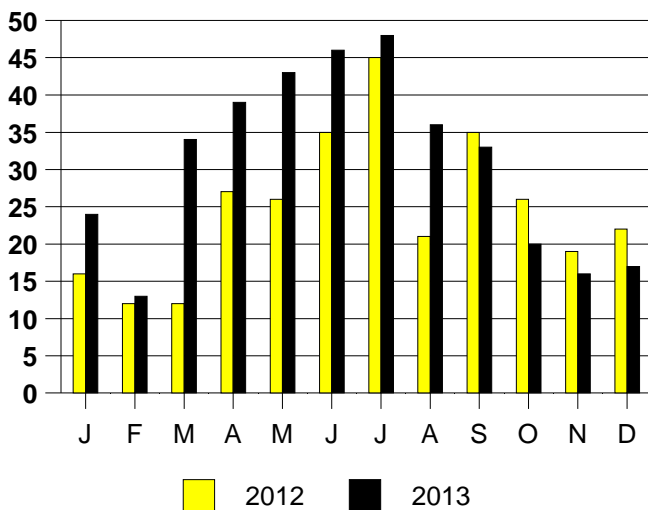
SALE/LIST PRICE RATIO

0K-100K	NONE
101K-150K	83.0%
151K-200K	97.9%
201K-300K	98.7%
301K-500K	96.8%
501K-750K	97.6%
751K+	100.0%

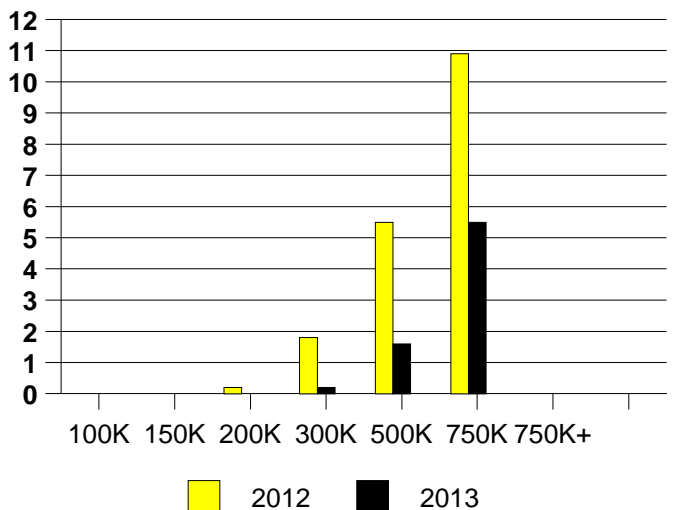
AVERAGE OVERPRICING  
Original List Price to Sale Price

2012	5.4%
2013	3.7%

MURPHY MONTHLY SALES



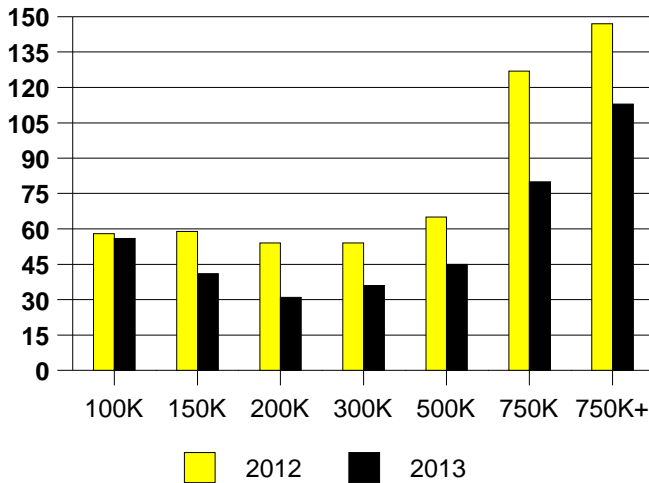
Inventory not shown where no sales  
MURPHY MONTHS OF INVENTORY



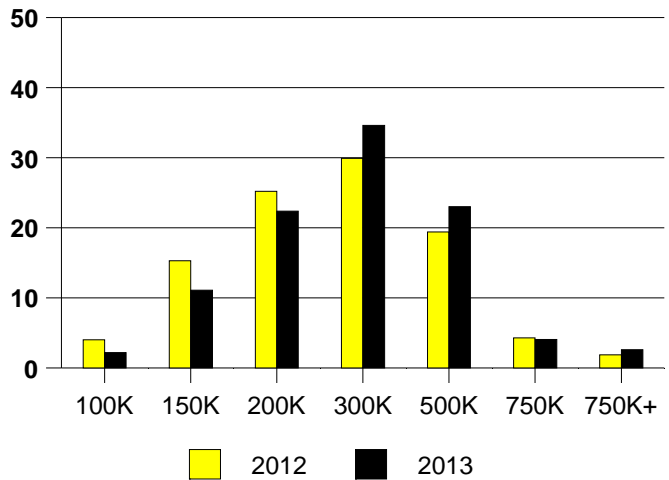
NTREIS Sold informaton as of 01/08/2014

	<u>2012</u>	<u>2013</u>
Total Sold Volume	\$ 792,601,660	\$ 1,036,385,074
Number of Sales	3049	3704
Median Sale Price	\$ 215,000	\$ 237,000

**DAYS ON MARKET(PLANO)**



**PLANO MKT SHARE BY PRICE RANGE**



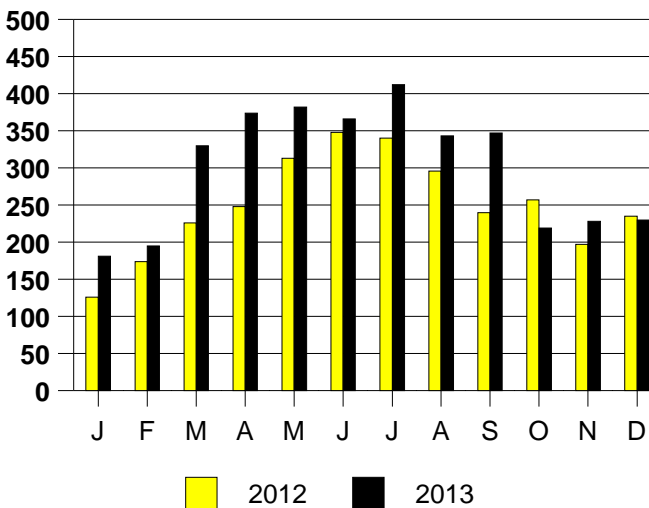
**SALE/LIST PRICE RATIO**

0K-100K	94.3%
101K-150K	97.9%
151K-200K	98.8%
201K-300K	98.8%
301K-500K	97.9%
501K-750K	97.1%
751K+	95.1%

**AVERAGE OVERPRICING**  
Original List Price to Sale Price

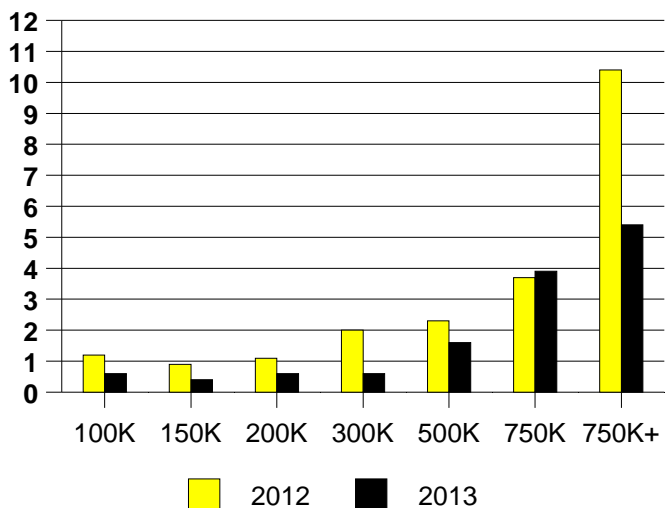
2012	5.5%
2013	3.3%

**PLANO MONTHLY SALES**



Inventory not shown where no sales

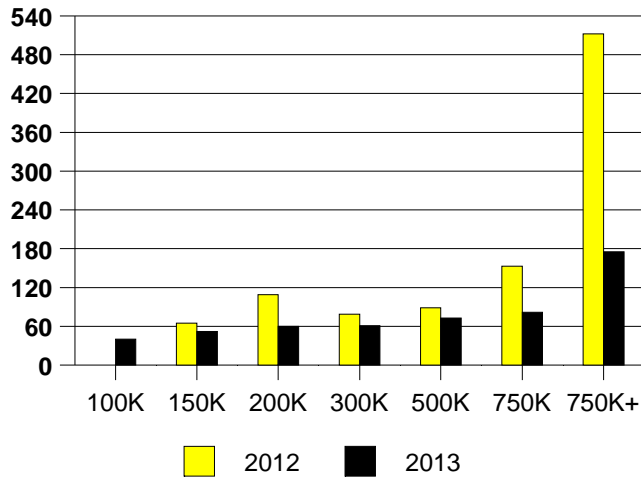
**PLANO MONTHS OF INVENTORY**



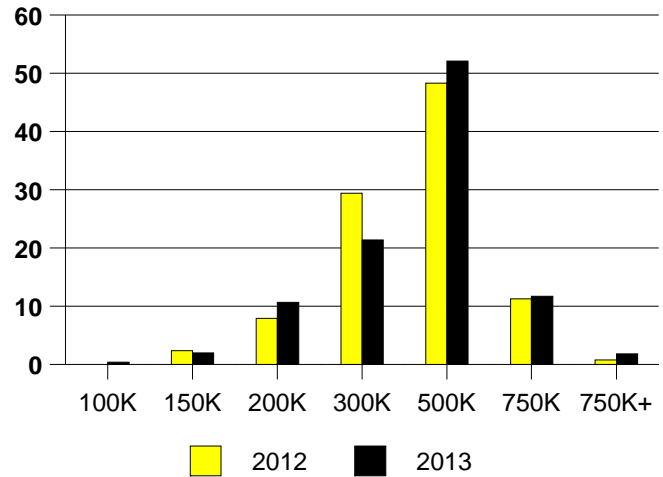
NTREIS Sold informaton as of 01/08/2014

	<u>2012</u>	<u>2013</u>
Total Sold Volume	\$ 131,983,279	\$ 186,166,663
Number of Sales	381	505
Median Sale Price	\$ 324,000	\$ 353,000

**PROSPER DAYS ON THE MARKET**



**PROSPER MARKET SHARE BY PRICE RANGE**



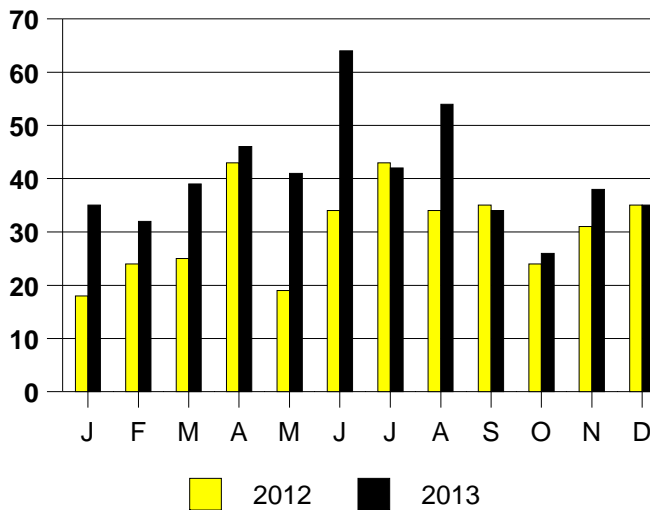
**SALE/LIST PRICE RATIO**

0K-100K	93.6%
101K-150K	96.6%
151K-200K	97.0%
201K-300K	97.7%
301K-500K	97.3%
501K-750K	97.1%
751K+	94.0%

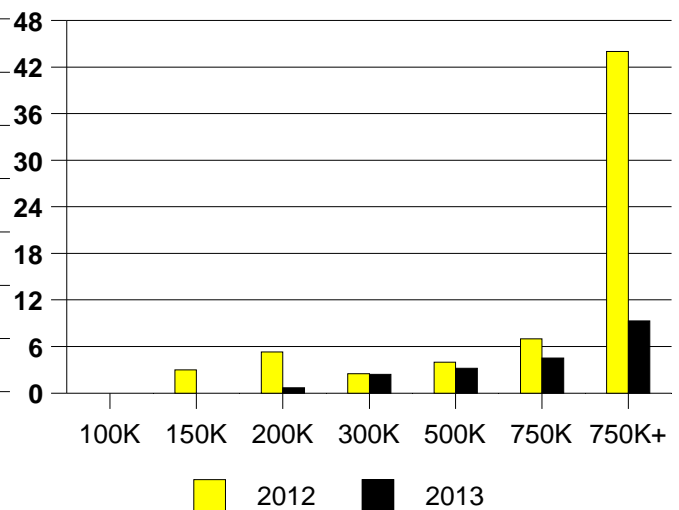
**AVERAGE OVERPRICING**  
Original List Price to Sale Price

2012	7.4%
2013	4.2%

**PROSPER MONTHLY SALES**



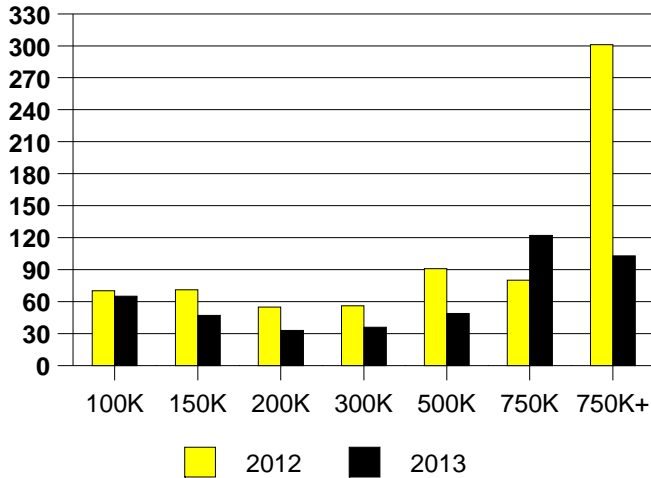
Inventory not shown where no sales  
**PROSPER MONTHS OF INVENTORY**



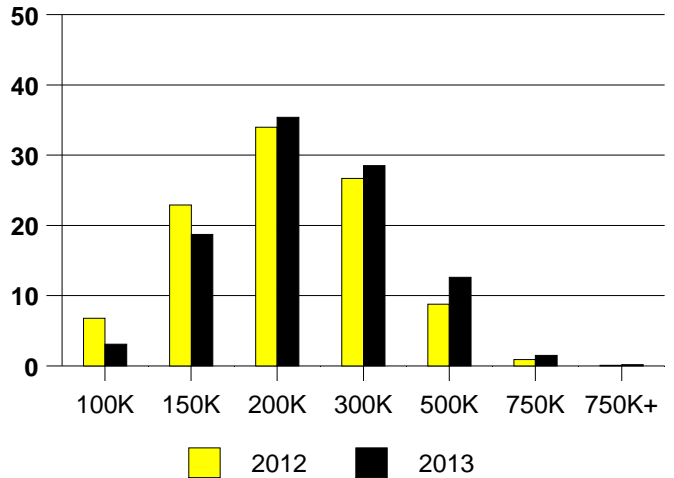
NTREIS Sold informaton as of 01/08/2014

	<u>2012</u>	<u>2013</u>
Total Sold Volume	\$ 207,047,028	\$ 272,087,763
Number of Sales	1050	1265
Median Sale Price	\$ 178,100	\$ 189,900

**DAYS ON MARKET(RICHARDSON)**



**RICHARDSON MKT SHARE BY PRICE RANGE**



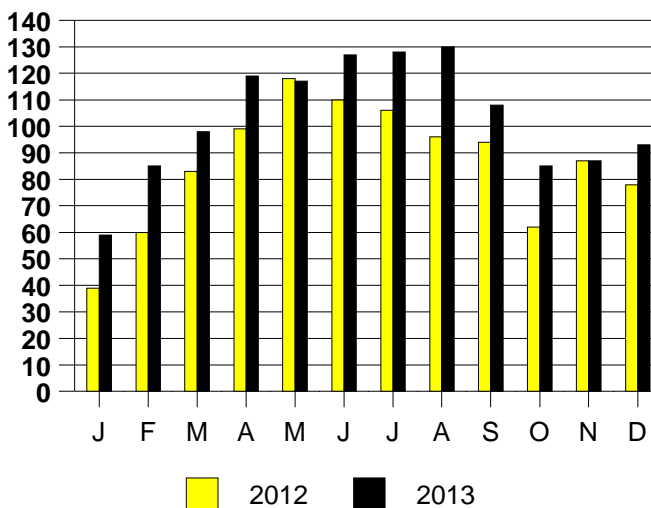
**SALE/LIST PRICE RATIO**

0K-100K	95.5%
101K-150K	97.8%
151K-200K	98.5%
201K-300K	98.4%
301K-500K	98.0%
501K-750K	96.3%
751K+	95.7%

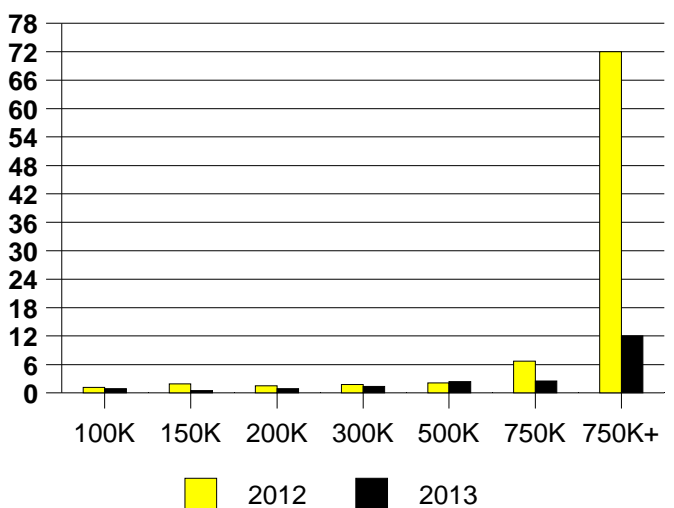
**AVERAGE OVERPRICING**  
Original List Price to Sale Price

2012	6.2%
2013	3.7%

**RICHARDSON MONTHLY SALES**



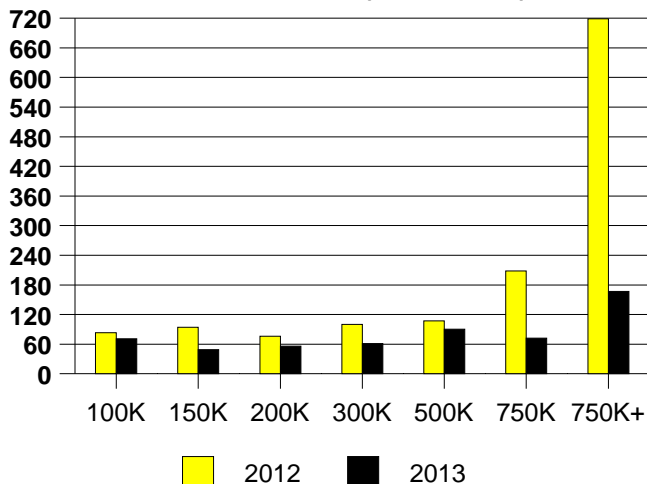
**RICHARDSON MONTHS OF INVENTORY**



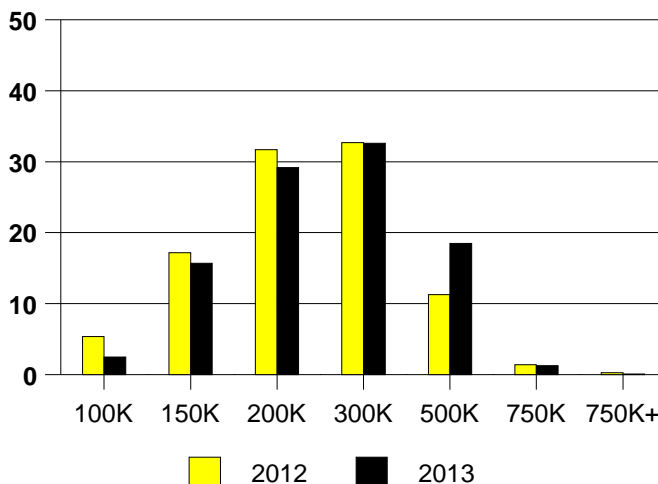
NTREIS Sold informaton as of 01/08/2014

	<u>2012</u>	<u>2013</u>
Total Sold Volume	\$ 152,851,102	\$ 208,786,479
Number of Sales	719	902
Median Sale Price	\$ 189,000	\$ 208,668

**DAYS ON THE MARKET (ROCKWALL)**



**ROCKWALL MKT SHARE BY PRICE RANGE**



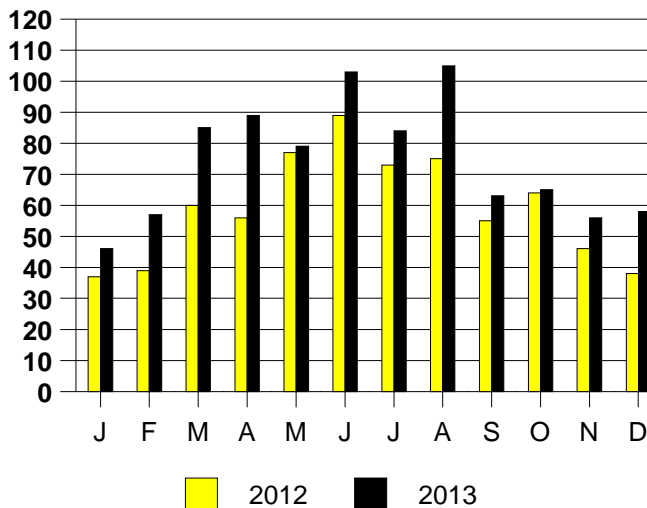
**SALE/LIST PRICE RATIO**

0K-100K	93.6%
101K-150K	97.0%
151K-200K	97.2%
201K-300K	97.3%
301K-500K	97.1%
501K-750K	97.8%
751K+	100.0%

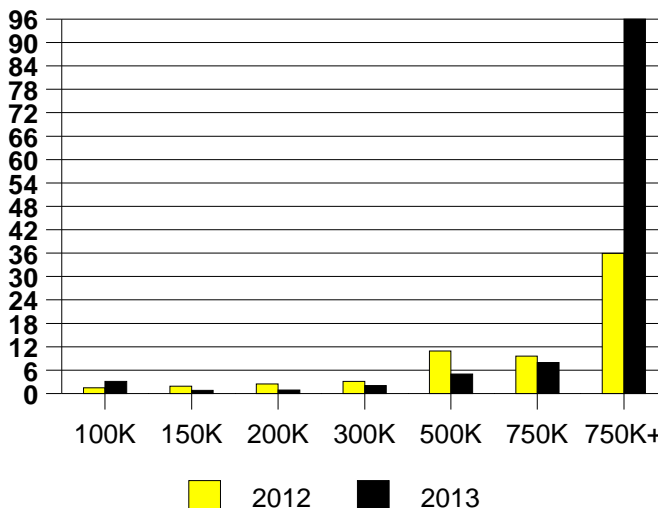
**AVERAGE OVERPRICING**  
Original List Price to Sale Price

2012	7.7%
2013	5.1%

**ROCKWALL MONTHLY SALES**



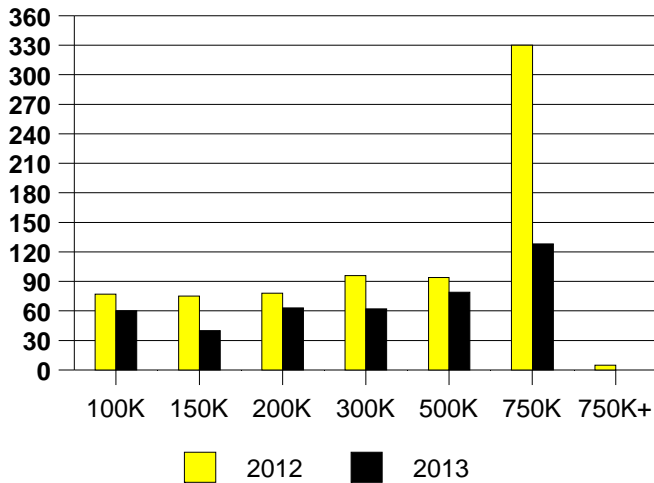
Inventory not shown where no sales  
**ROCKWALL MONTHS OF INVENTORY**



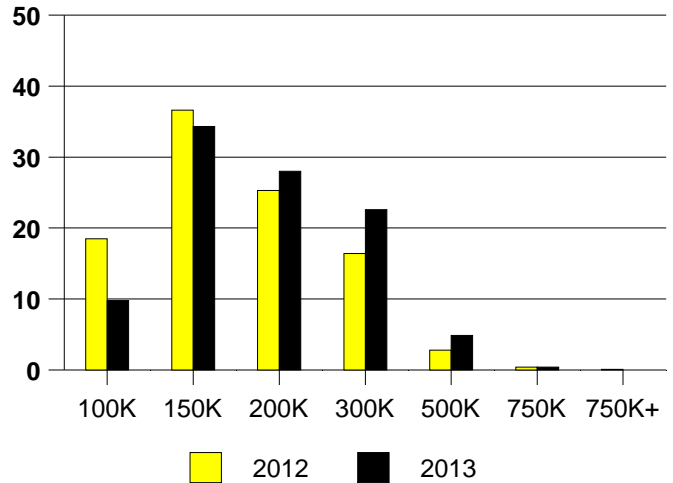
NTREIS Sold informaton as of 01/08/2014

	<u>2012</u>	<u>2013</u>
Total Sold Volume	\$ 122,905,213	\$ 177,796,777
Number of Sales	795	1029
Median Sale Price	\$ 144,000	\$ 162,000

**DAYS ON THE MARKET (ROWLETT)**



**ROWLETT MKT SHARE BY PRICE RANGE**



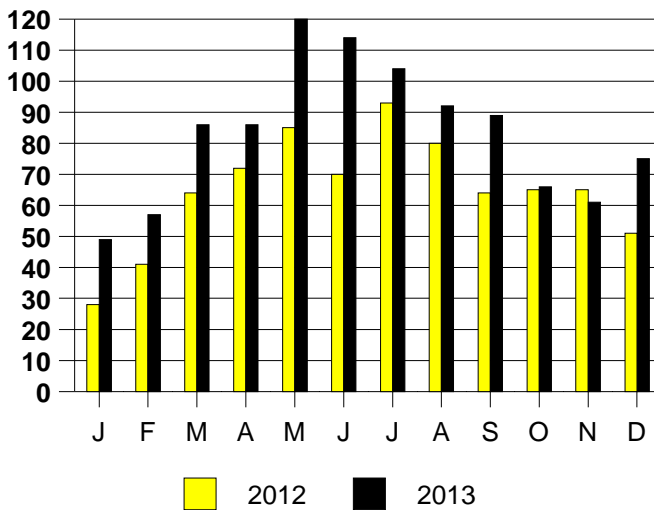
**SALE/LIST PRICE RATIO**

0K-100K	96.3%
101K-150K	98.5%
151K-200K	98.1%
201K-300K	98.1%
301K-500K	96.4%
501K-750K	95.6%
751K+	NONE

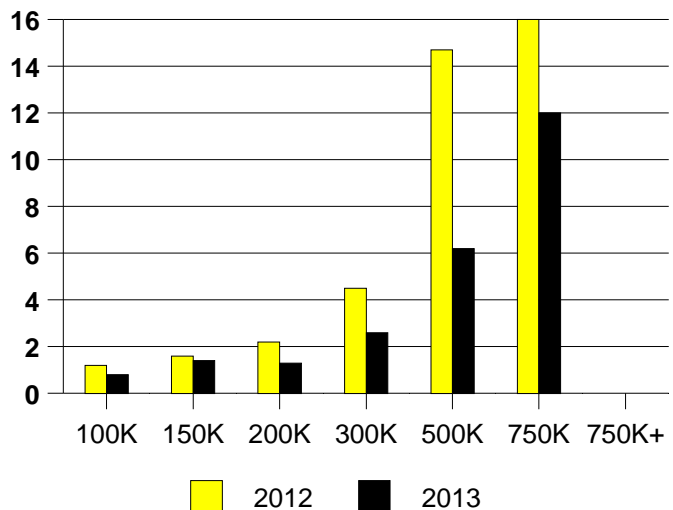
**AVERAGE OVERPRICING**  
Original List Price to Sale Price

2012	6.7%
2013	4.1%

**ROWLETT MONTHLY SALES**



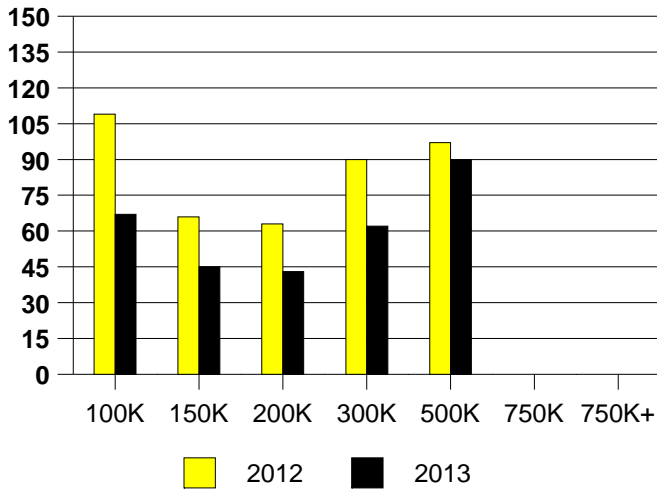
Inventory not shown where no sales  
**ROWLETT MONTHS OF INVENTORY**



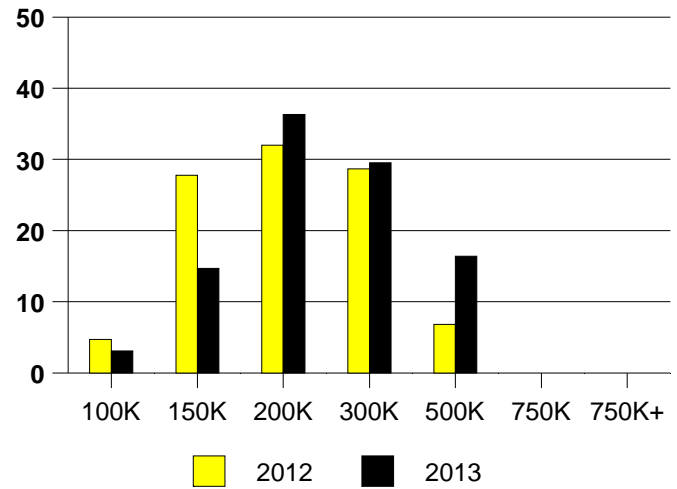
NTREIS Sold informaton as of 01/08/2014

	2012	2013
Total Sold Volume	\$ 64,118,894	\$ 89,693,465
Number of Sales	338	421
Median Sale Price	\$ 167,000	\$ 190,000

DAYS ON THE MARKET (SACHSE)



SACHSE MKT SHARE BY PRICE RANGE



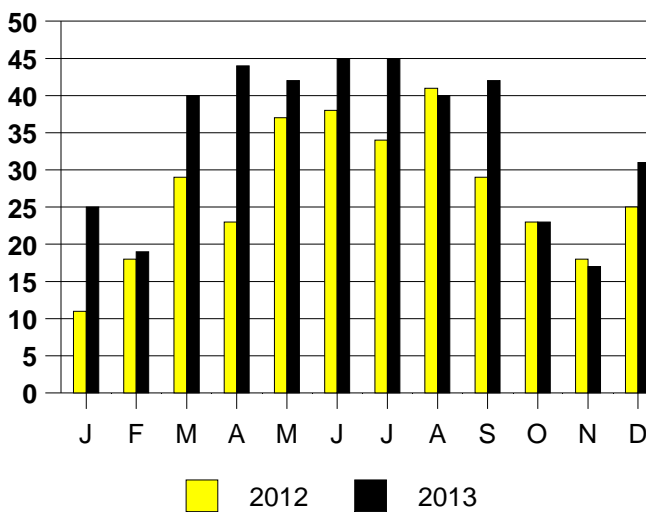
SALE/LIST PRICE RATIO

0K-100K	97.8%
101K-150K	98.9%
151K-200K	98.7%
201K-300K	97.6%
301K-500K	96.3%
501K-750K	NONE
751K+	NONE

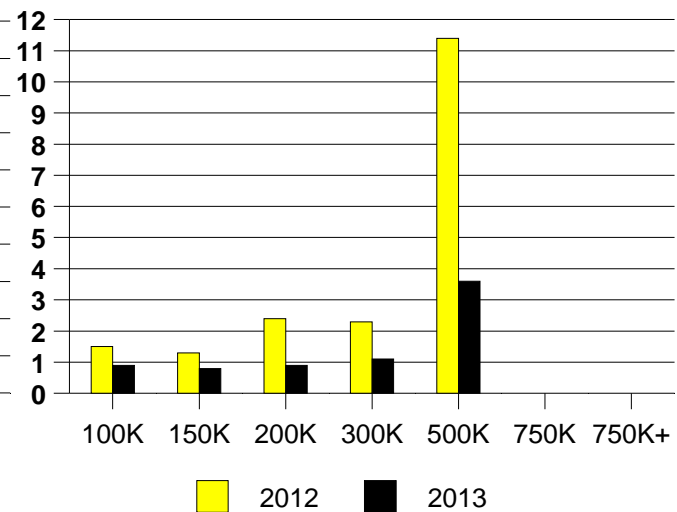
AVERAGE OVERPRICING  
Original List Price to Sale Price

2012	6.9%
2013	3.8%

SACHSE MONTHLY SALES



Inventory not shown where no sales  
SACHSE MONTHS OF INVENTORY

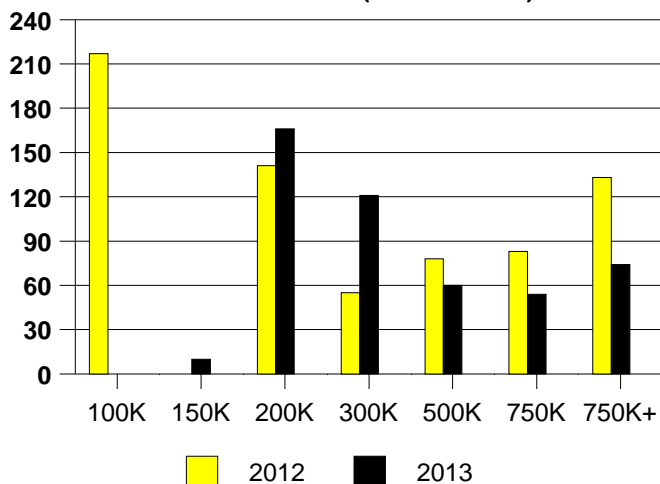


NTREIS Sold informaton as of 01/08/2014

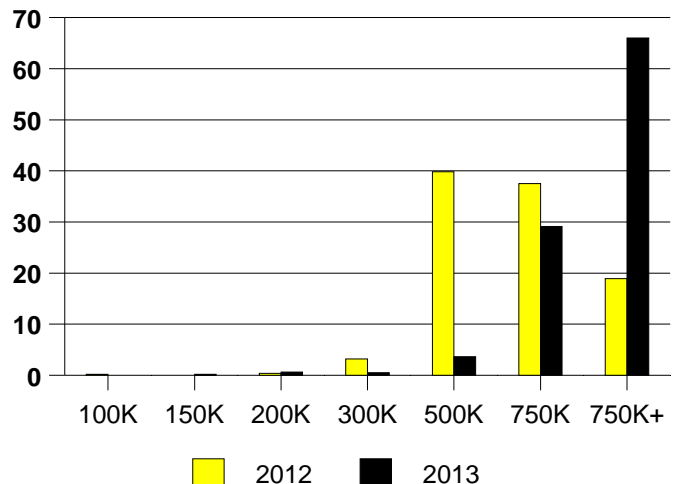


	<u>2012</u>	<u>2013</u>
Total Sold Volume	\$ 314,691,554	\$ 411,398,508
Number of Sales	525	632
Median Sale Price	\$ 542,000	\$ 565,750

**DAYS ON THE MARKET (SOUTHLAKE)**



**SOUTHLAKE MKT SHARE BY PRICE RANGE**



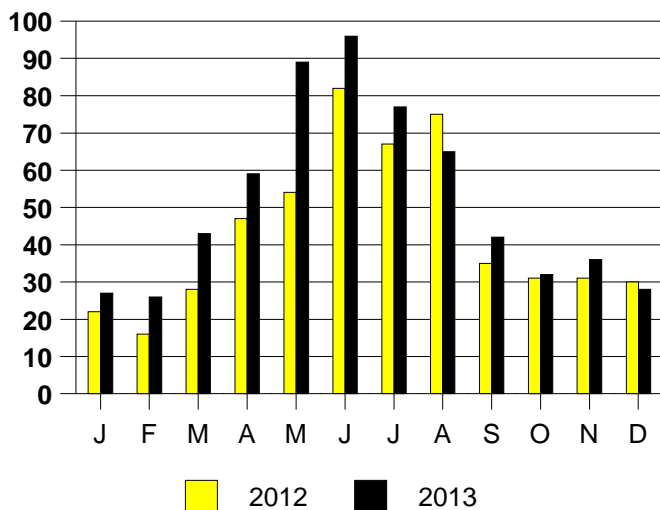
**SALE/LIST PRICE RATIO**

0K-100K	NONE
101K-150K	163.1%
151K-200K	87.8%
201K-300K	97.4%
301K-500K	97.9%
501K-750K	97.7%
751K+	97.3%

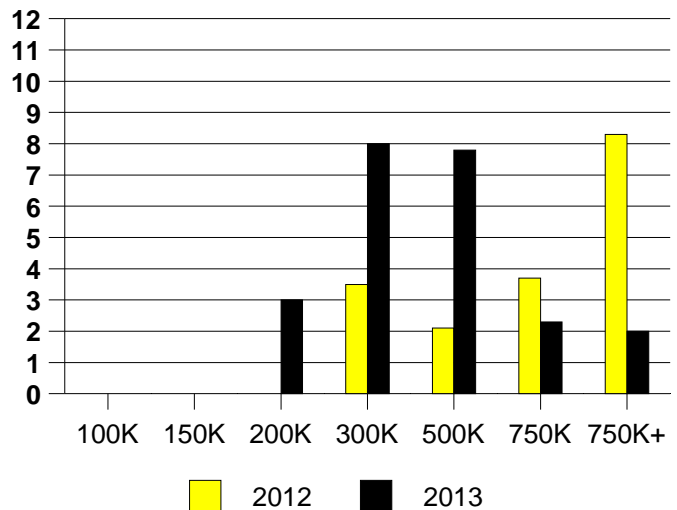
**AVERAGE OVERPRICING**  
Original List Price to Sale Price

2012	6.0%
2013	4.9%

**SOUTHLAKE MONTHLY SALES**



Inventory not shown where no sales  
**SOUTHLAKE MONTHS OF INVENTORY**

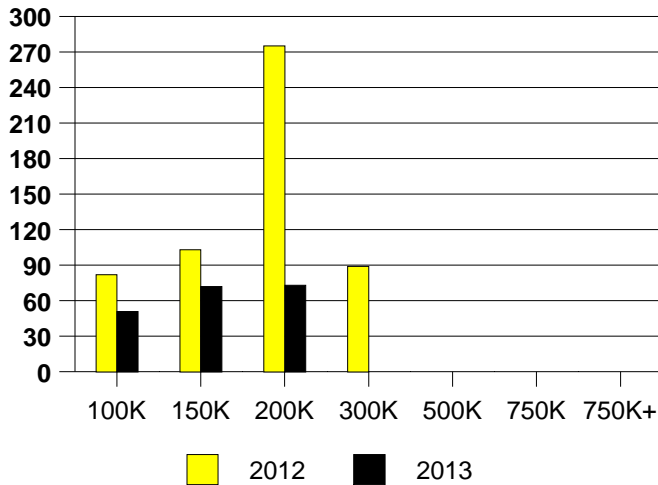


NTREIS Sold informaton as of 01/08/2014

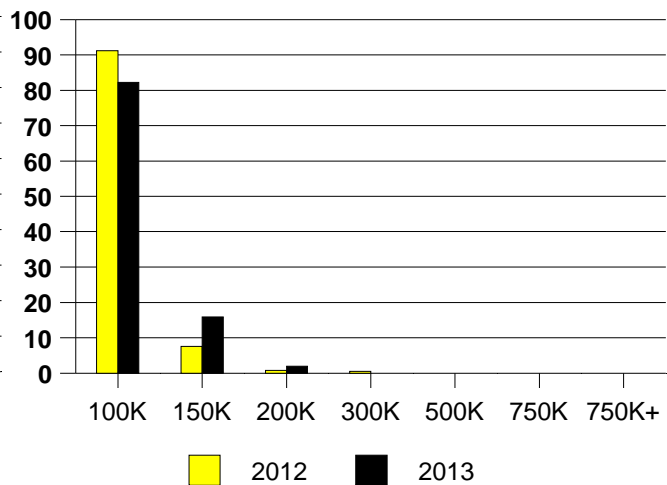
**CHICAGO TITLE**

	<u>2012</u>	<u>2013</u>
Total Sold Volume	\$24,696,641	\$ 24,777,986
Number of Sales	397	353
Median Sale Price	\$ 60,000	\$ 67,000

**DAYS ON THE MARKET (OAK CLIFF)**



**OAK CLIFF MKT SHARE BY PRICE RANGE**



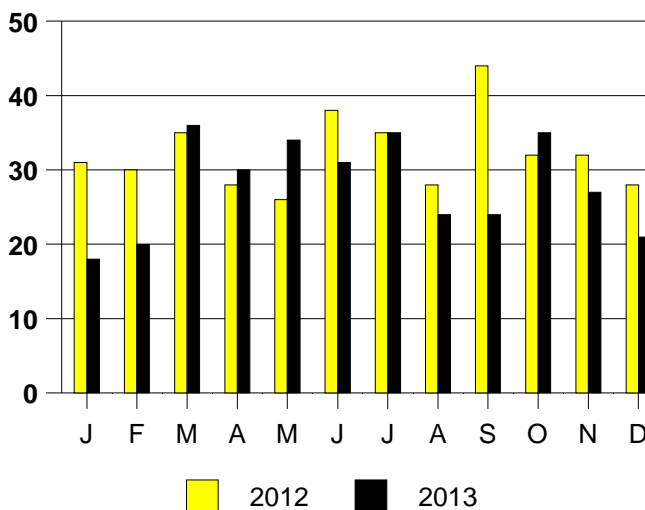
**SALE/LIST PRICE RATIO**

0K-100K	101.6%
101K-150K	99.5%
151K-200K	91.0%
201K-300K	NONE
301K-500K	NONE
501K-750K	NONE
751K+	NONE

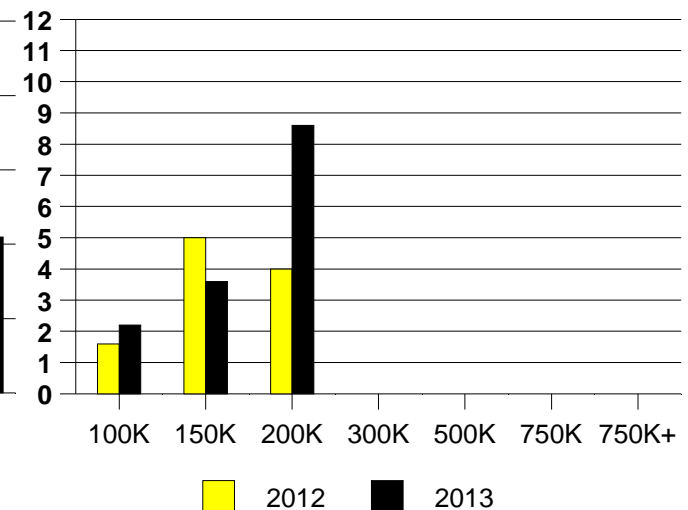
**AVERAGE OVERPRICING**  
Original List Price to Sale Price

2012	9.2%
2013	4.0%

**OAK CLIFF MONTHLY SALES**

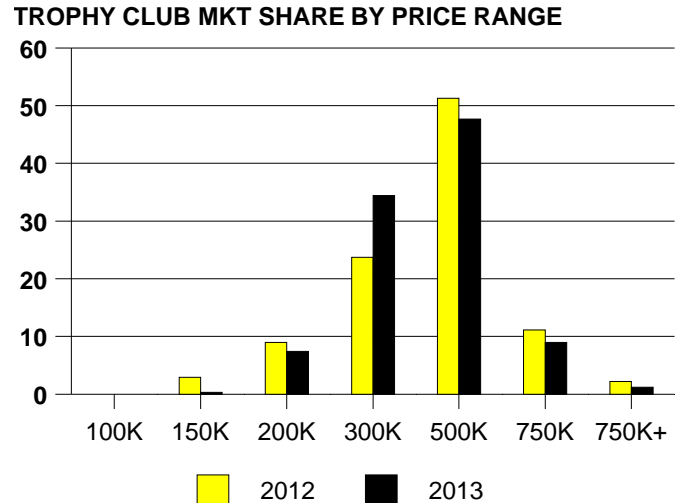
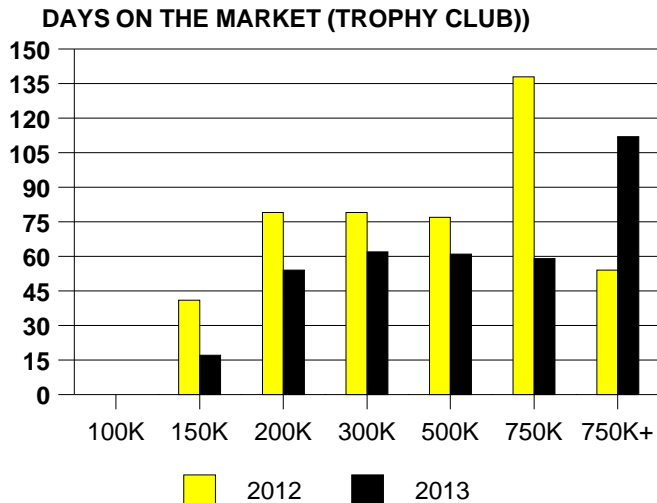


Inventory not shown where no sales  
**OAK CLIFF MONTHS OF INVENTORY**



NTREIS Sold informaton as of 01/08/2014

	<u>2012</u>	<u>2013</u>
Total Sold Volume	\$ 100,547,610	\$ 111,653,920
Number of Sales	279	323
Median Sale Price	\$ 345,000	\$ 325,000

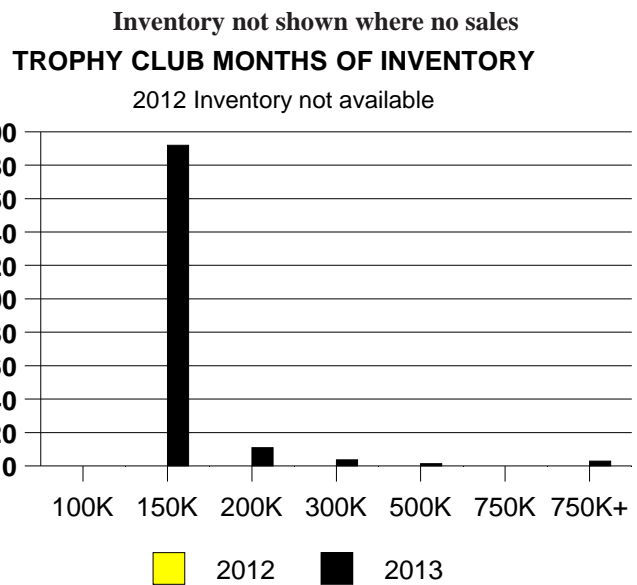
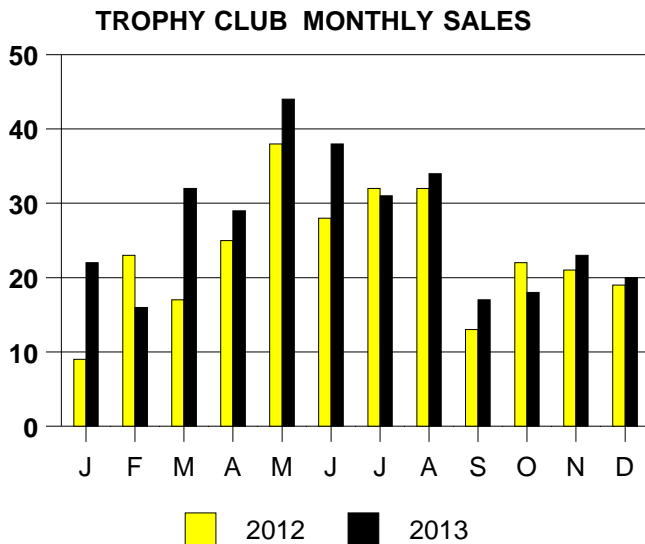


**SALE/LIST PRICE RATIO**

Price Range	Ratio
0K-100K	NONE
101K-150K	101.5%
151K-200K	98.6%
201K-300K	97.3%
301K-500K	96.7%
501K-750K	99.3%
751K+	97.1%

**AVERAGE OVERPRICING**  
Original List Price to Sale Price

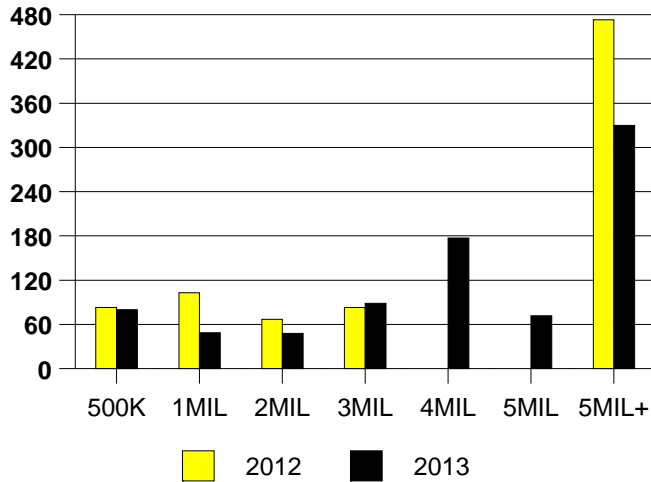
2012	6.1%
2013	4.0%



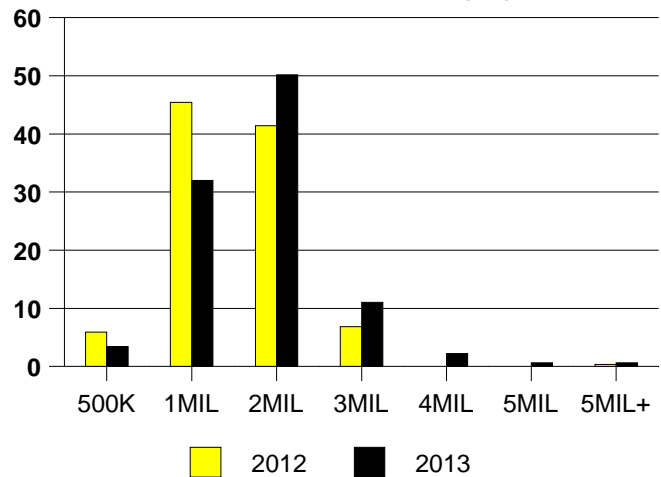
NTREIS Sold informaton as of 01/08/2014

	<u>2012</u>	<u>2013</u>
Total Sold Volume	\$ 374,753,679	\$ 453,300,285
Number of Sales	324	319
Median Sale Price	\$ 988,250	\$ 1,225,000

**DAYS ON THE MARKET (UNIV PARK)**



**MKT SHARE BY PRICE RANGE(UP)**



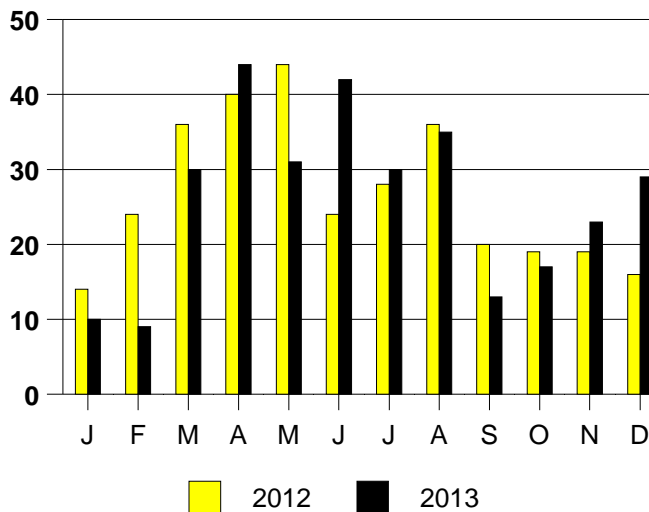
**SALE/LIST PRICE RATIO**

0K-500K	98.0%
501K-1MIL	97.3%
1MIL-2MIL	97.2%
2MIL-3MIL	96.3%
3MIL-4MIL	94.4%
4MIL-5MIL	92.2%
5MIL+	88.9%

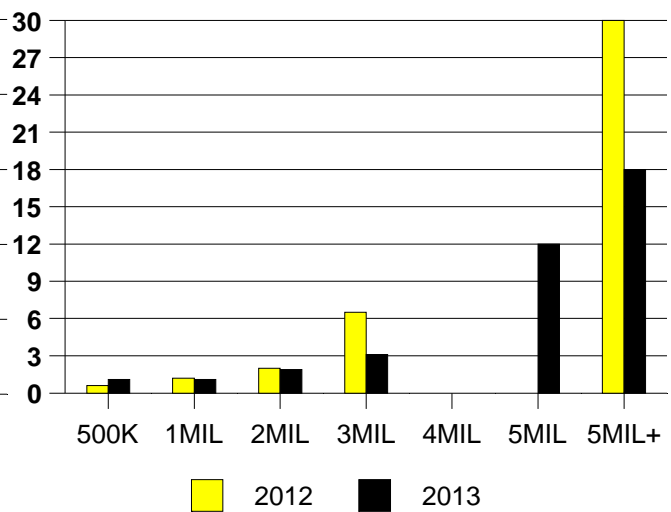
**AVERAGE OVERPRICING**

Orig List Price to Sale Price	
2012	6.5%
2013	5.0%

**UNIVERSITY PARK MONTHLY SALES**



**Inventory not shown where no sales  
UNIV PARK MONTHS OF INVENTORY**

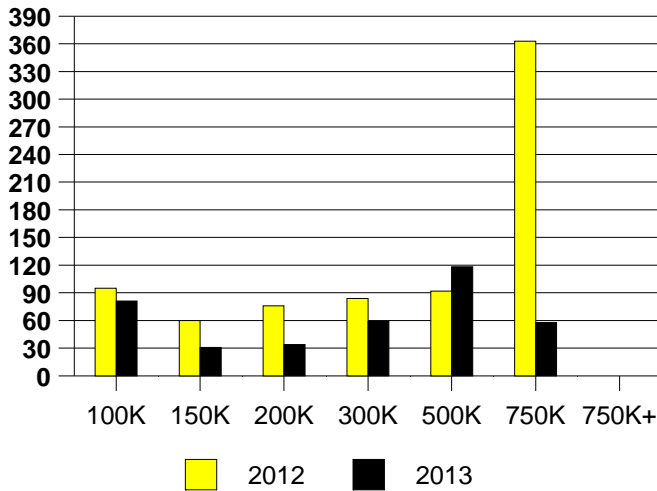


NTREIS Sold information as of 01/08/2014

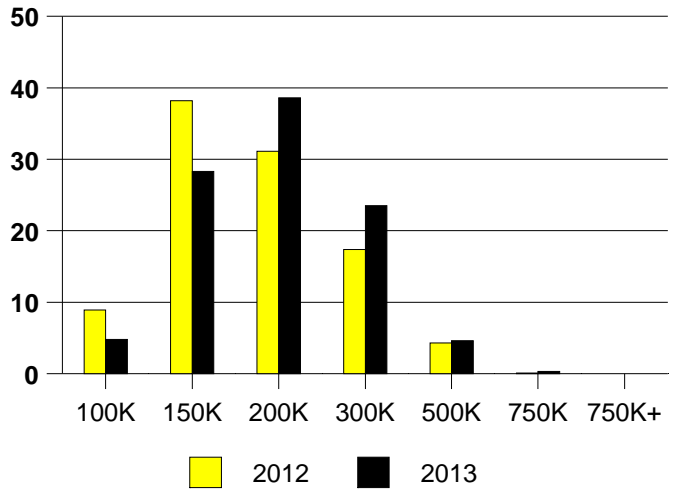
**CHICAGO TITLE**

	<u>2012</u>	<u>2013</u>
Total Sold Volume	\$ 125,347,955	\$ 143,943,179
Number of Sales	752	796
Median Sale Price	\$ 155,000	\$ 168,500

**DAYS ON THE MARKET (WYLIE)**



**WYLIE MKT SHARE BY PRICE RANGE**



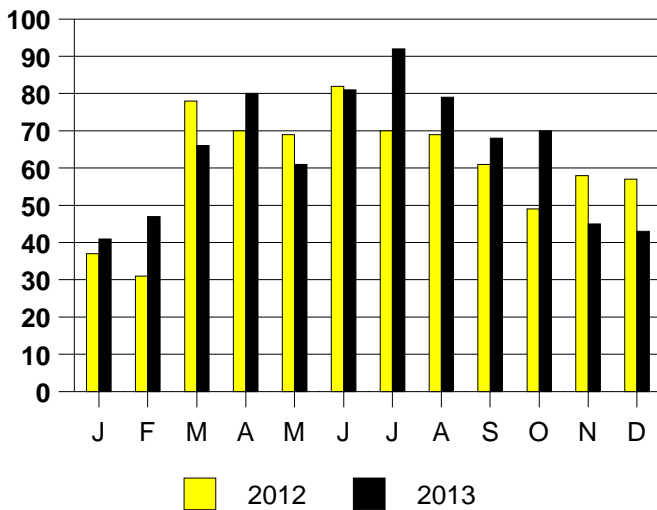
**SALE/LIST PRICE RATIO**

0K-100K	93.8%
101K-150K	98.7%
151K-200K	98.9%
201K-300K	97.7%
301K-500K	97.4%
501K-750K	93.4%
751K+	NONE

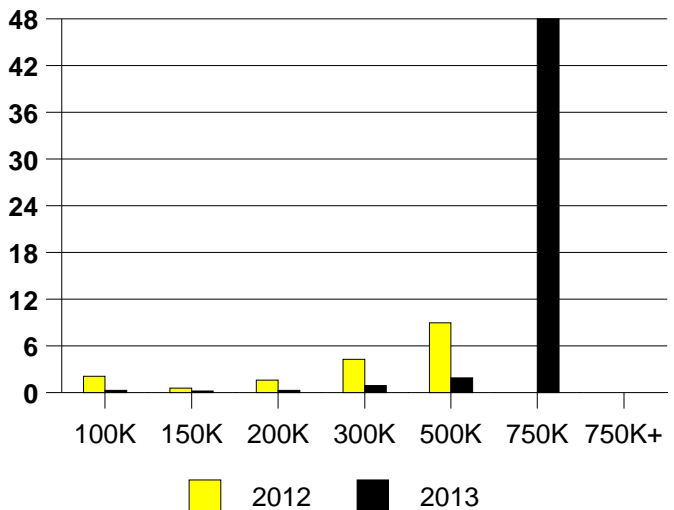
**AVERAGE OVERPRICING**  
Original List Price to Sale Price

2012	5.6%
2013	3.5%

**WYLIE MONTHLY SALES**



Inventory not shown where no sales  
**WYLIE MONTHS OF INVENTORY**



NTREIS Sold informaton as of 01/08/2014