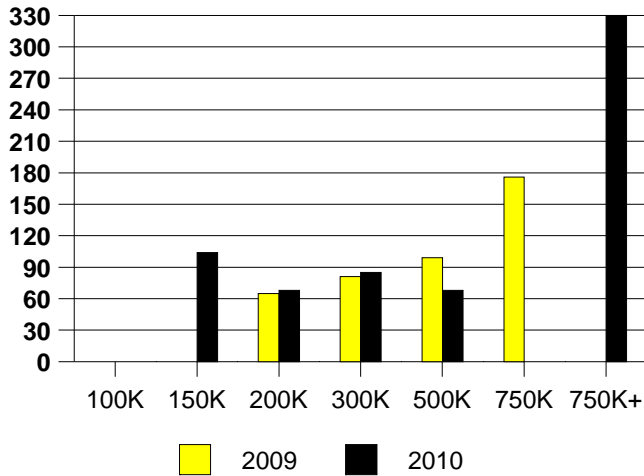
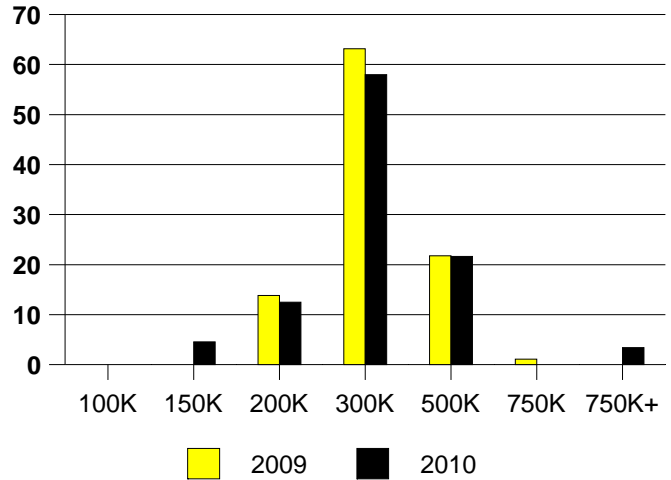


	<u>2009</u>	<u>2010</u>
Total Sold Volume	\$ 23,912,256	\$ 24,870,220
Number of Sales	87	88
Median Sale Price	\$ 261,464	\$ 259,650

DAYS ON THE MARKET (ADDISON)



ADDISON MKT SHARE BY PRICE RANGE



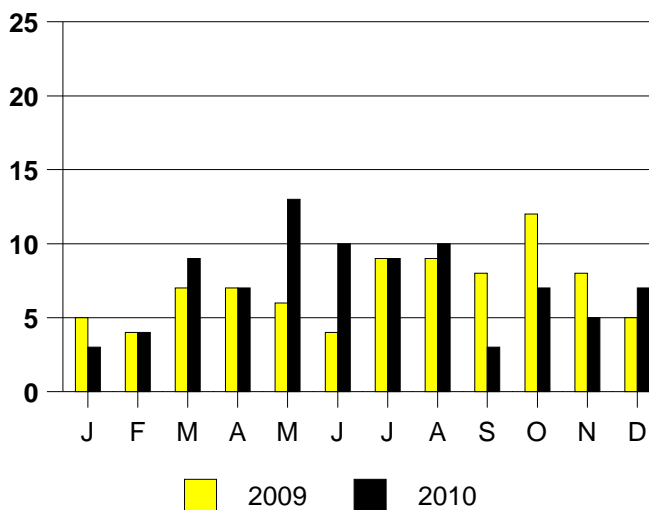
SALE/LIST PRICE RATIO

0K-100K	NONE
101K-150K	97.7%
151K-200K	97.0%
201K-300K	97.8%
301K-500K	97.3%
501K-750K	NONE
751K+	87.1%

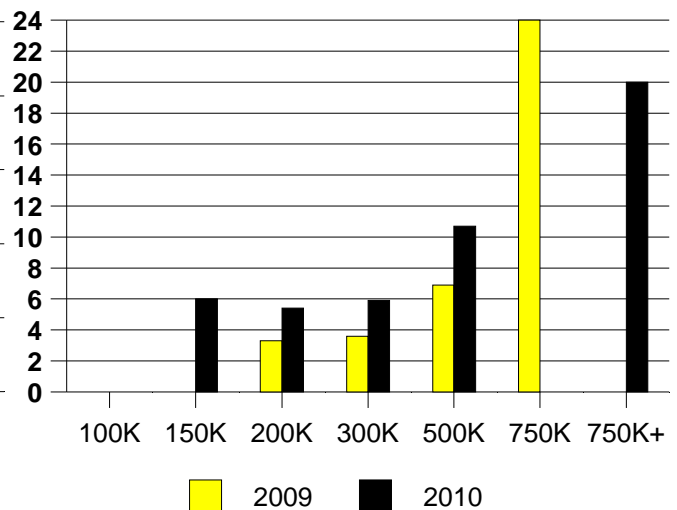
AVERAGE OVERPRICING
Original List Price to Sale Price

2009	7.2%
2010	5.5%

ADDISON MONTHLY SALES

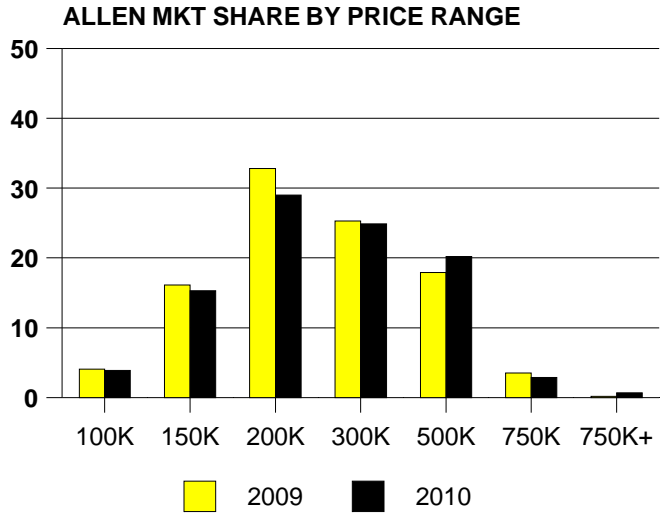
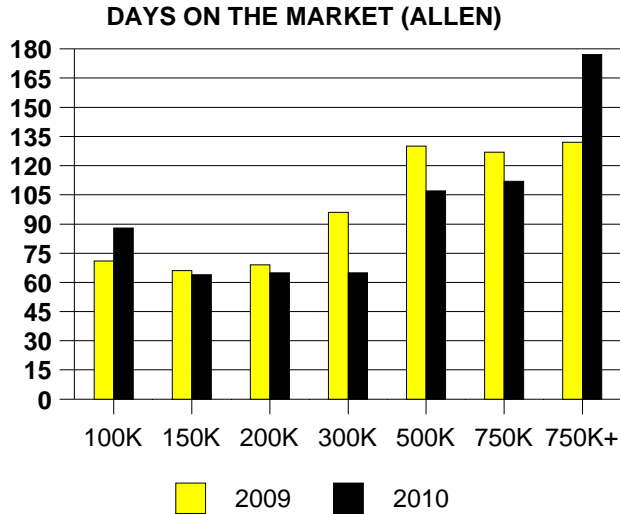


Inventory not shown where no sales
ADDISON MONTHS OF INVENTORY



NTREIS Sold informaton as of 01/03/2011

	2009	2010
Total Sold Volume	\$304,507,680	\$ 301,033,920
Number of Sales	1304	1278
Median Sale Price	\$ 195,925	\$ 201,000



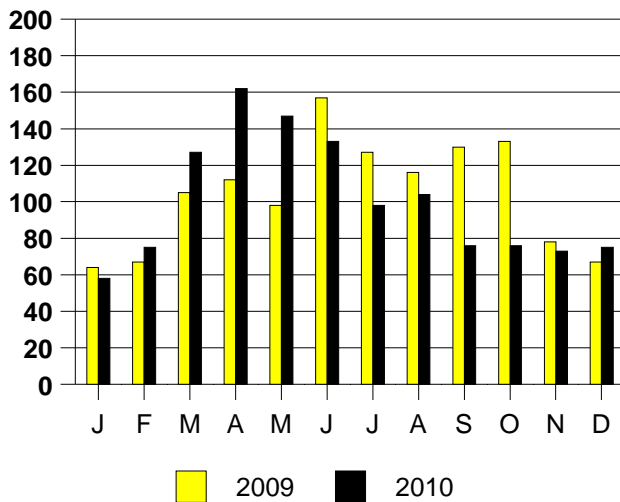
SALE/LIST PRICE RATIO

0K-100K	95.0%
101K-150K	97.1%
151K-200K	97.9%
201K-300K	96.9%
301K-500K	94.4%
501K-750K	94.0%
751K+	92.9%

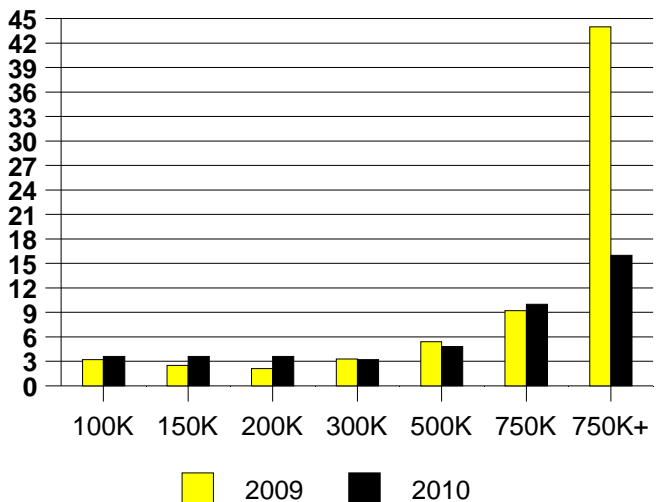
AVERAGE OVERPRICING
Original List Price to Sale Price

2009	6.6%
2010	6.3%

ALLEN MONTHLY SALES



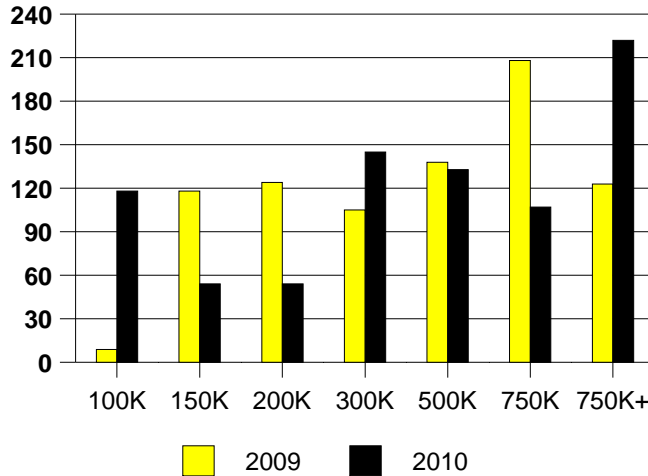
ALLEN MONTHS OF INVENTORY



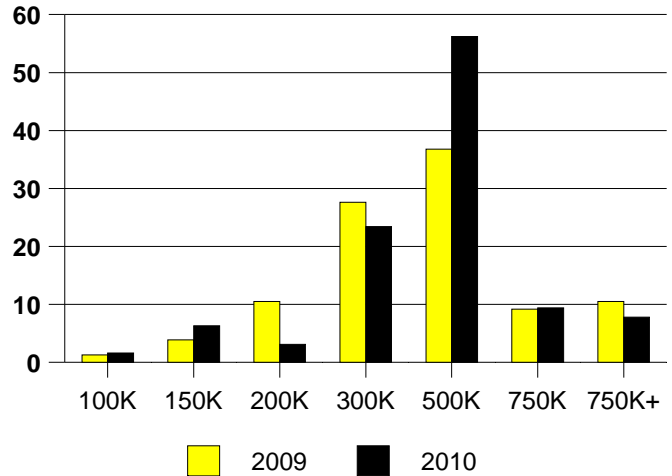
NTREIS Sold informaton as of 01/03/2011

	2009	2010
Total Sold Volume	\$ 30,328,830	\$ 25,940,360
Number of Sales	76	64
Median Sale Price	\$ 324,615	\$ 347,000

DAYS ON THE MARKET (ARGYLE)



ARGYLE MKT SHARE BY PRICE RANGE



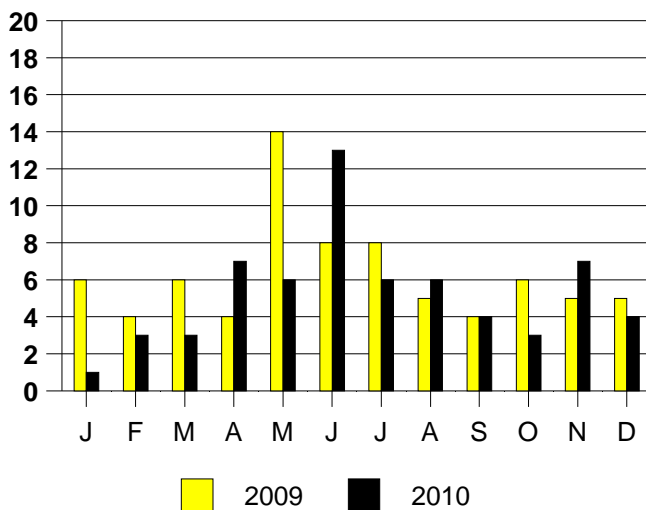
SALE/LIST PRICE RATIO

0K-100K	73.3%
101K-150K	93.1%
151K-200K	94.1%
201K-300K	97.0%
301K-500K	97.2%
501K-750K	97.2%
751K+	94.5%

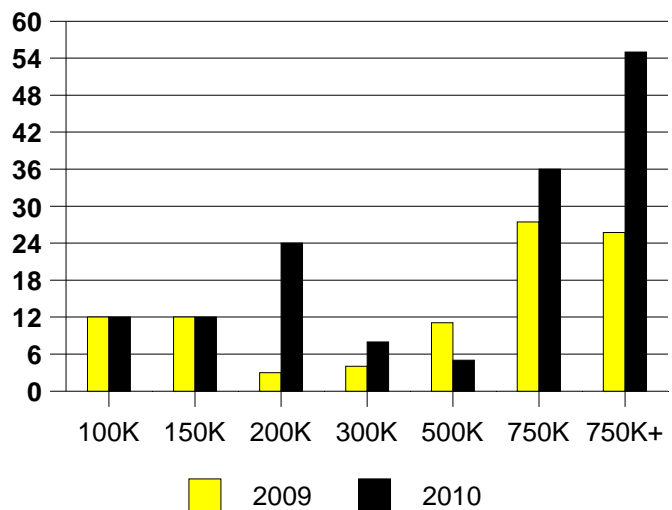
AVERAGE OVERPRICING
Original List Price to Sale Price

2009	9.4%
2010	9.3%

ARGYLE MONTHLY SALES



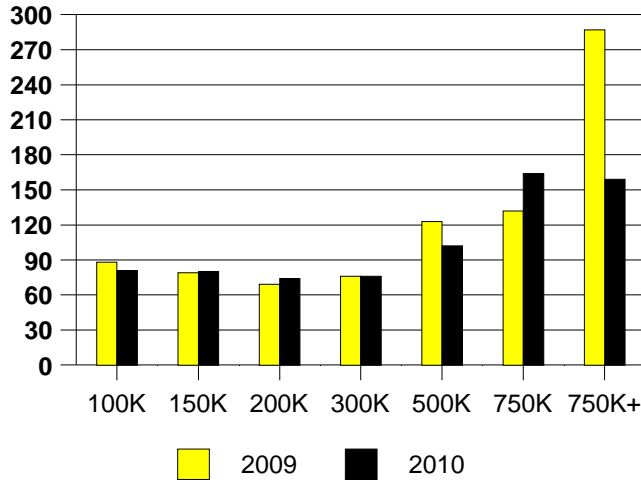
Inventory not shown where no sales
ARGYLE MONTHS OF INVENTORY



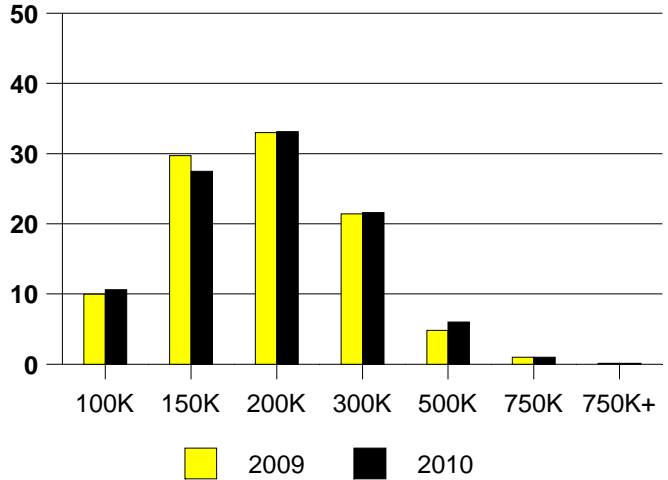
NTRIS Sold informaton as of 01/03/2011

	<u>2009</u>	<u>2010</u>
Total Sold Volume	\$ 206,564,992	\$ 177,635,200
Number of Sales	1155	977
Median Sale Price	\$ 162,000	\$ 165,000

DAYS ON MARKET(CARROLLTON)



CARROLLTON MKT SHARE BY PRICE RANGE



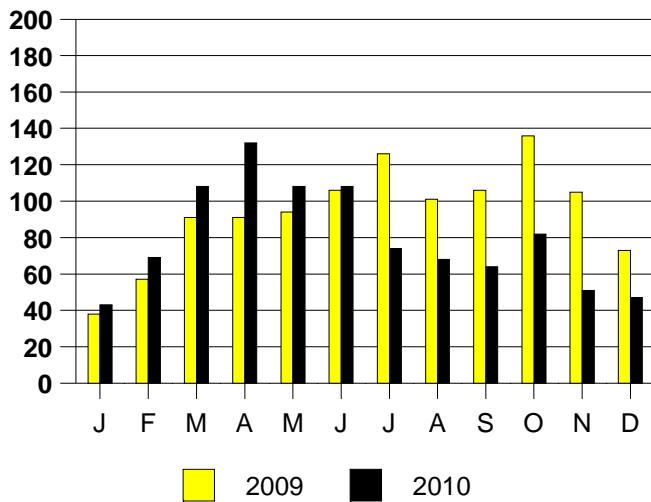
SALE/LIST PRICE RATIO

0K-100K	92.6%
101K-150K	97.7%
151K-200K	97.6%
201K-300K	97.0%
301K-500K	95.7%
501K-750K	96.3%
751K+	93.0%

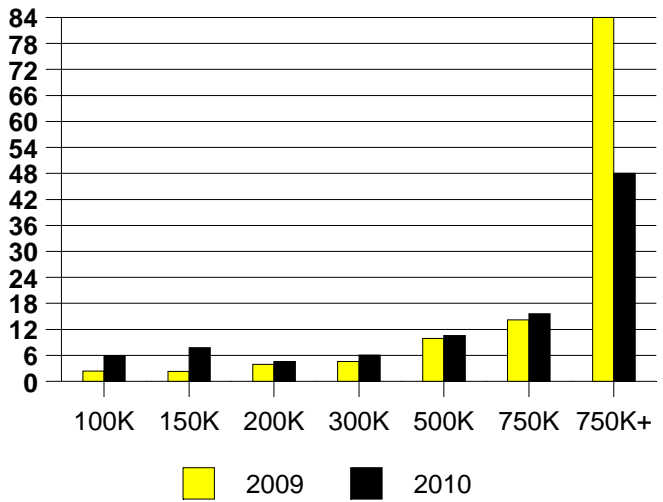
AVERAGE OVERPRICING
Original List Price to Sale Price

2009	7.2%
2010	7.3%

CARROLLTON MONTHLY SALES



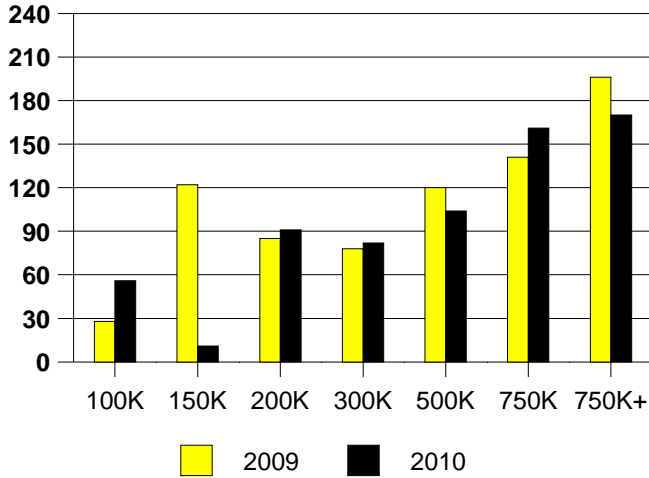
CARROLLTON MONTHS OF INVENTORY



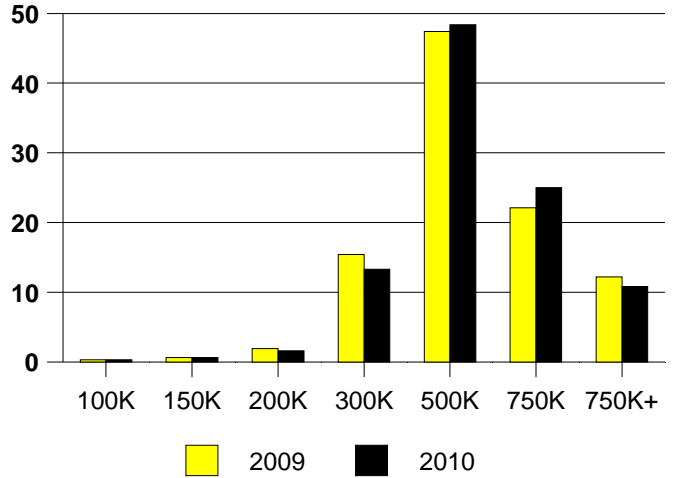
NTREIS Sold informaton as of 01/03/2011

	<u>2009</u>	<u>2010</u>
Total Sold Volume	\$ 155,227,200	\$ 150,036,256
Number of Sales	312	316
Median Sale Price	\$ 420,000	\$ 419,950

DAYS ON THE MARKET (COLLEYVILLE)



COLLEYVILLE MKT SHARE BY PRICE RANGE



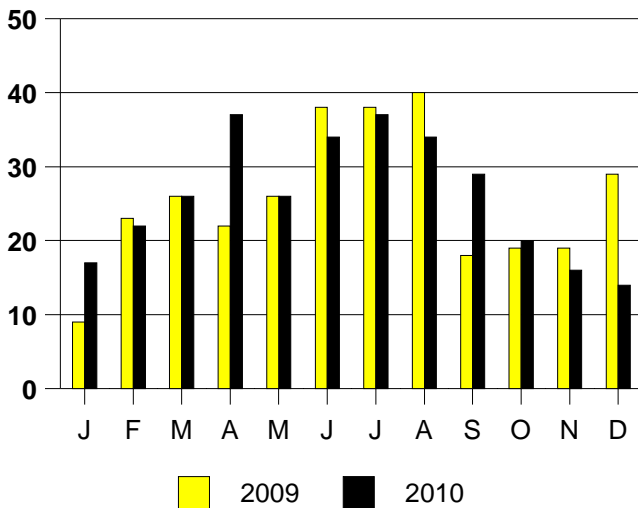
SALE/LIST PRICE RATIO

0K-100K	94.2%
101K-150K	91.0%
151K-200K	96.3%
201K-300K	97.0%
301K-500K	96.2%
501K-750K	96.8%
751K+	96.1%

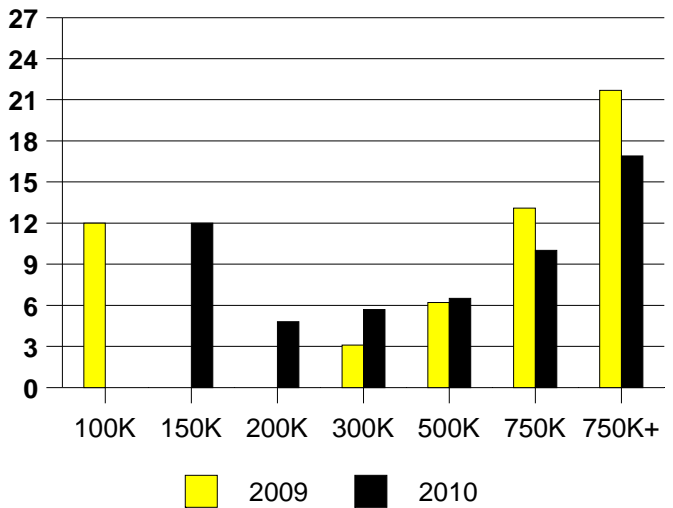
AVERAGE OVERPRICING
Original List Price to Sale Price

2009	8.0%
2010	7.9%

COLLEYVILLE MONTHLY SALES



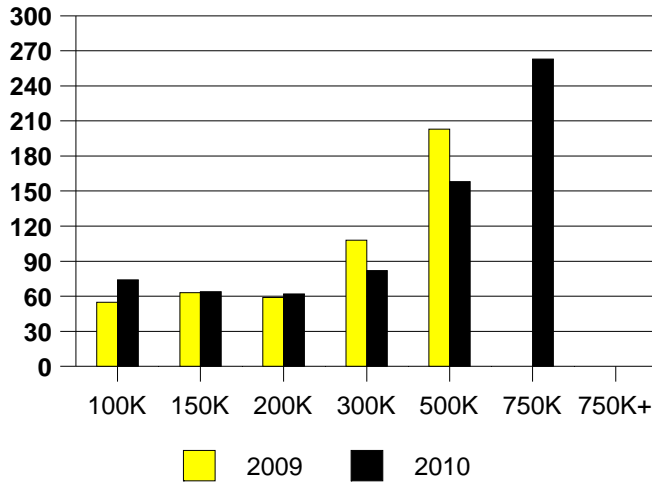
COLLEYVILLE MONTHS OF INVENTORY



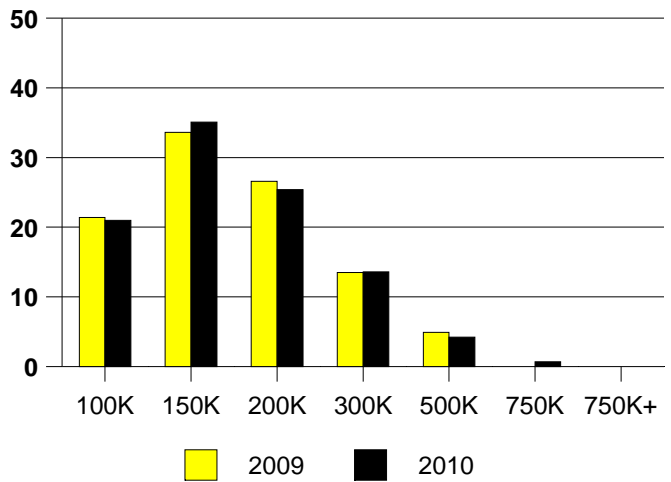
NTREIS Sold informaton as of 01/03/2011

	<u>2009</u>	<u>2010</u>
Total Sold Volume	\$ 82,885,544	\$ 67,783,880
Number of Sales	533	433
Median Sale Price	\$ 140,000	\$ 139,500

DAYS ON THE MARKET (COLONY)



COLONY MKT SHARE BY PRICE RANGE



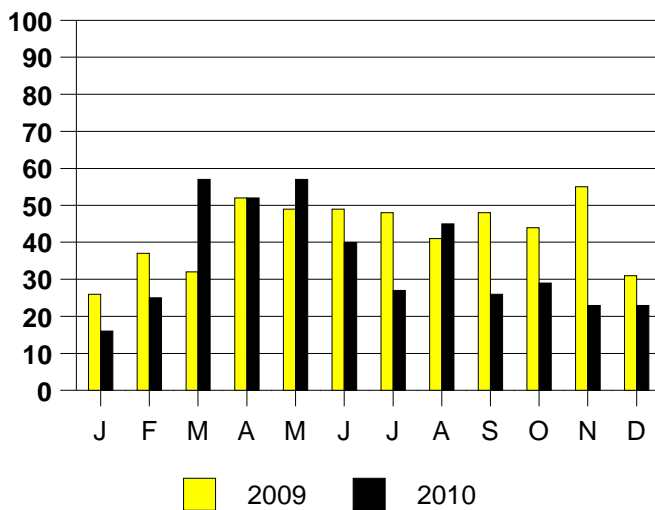
SALE/LIST PRICE RATIO

0K-100K	94.8%
101K-150K	98.6%
151K-200K	98.6%
201K-300K	97.4%
301K-500K	93.2%
501K-750K	89.2%
751K+	NONE

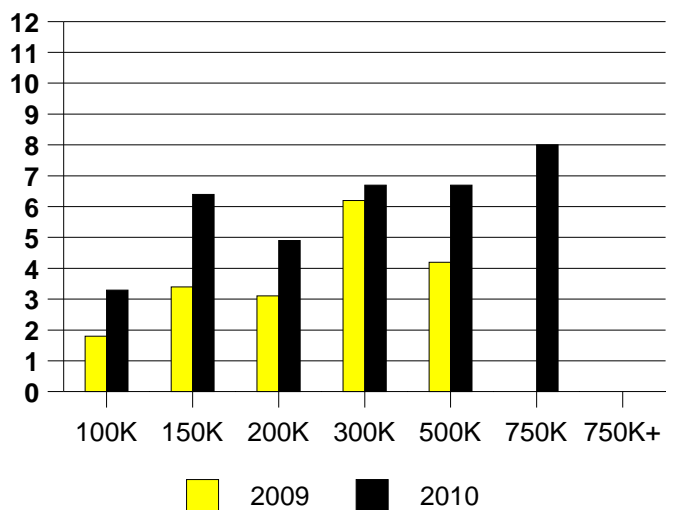
AVERAGE OVERPRICING
Original List Price to Sale Price

2009	5.2%
2010	5.9%

THE COLONY MONTHLY SALES



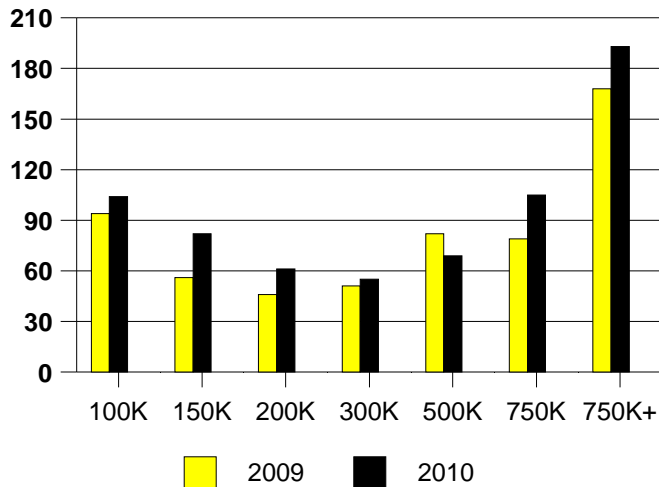
THE COLONY MONTHS OF INVENTORY



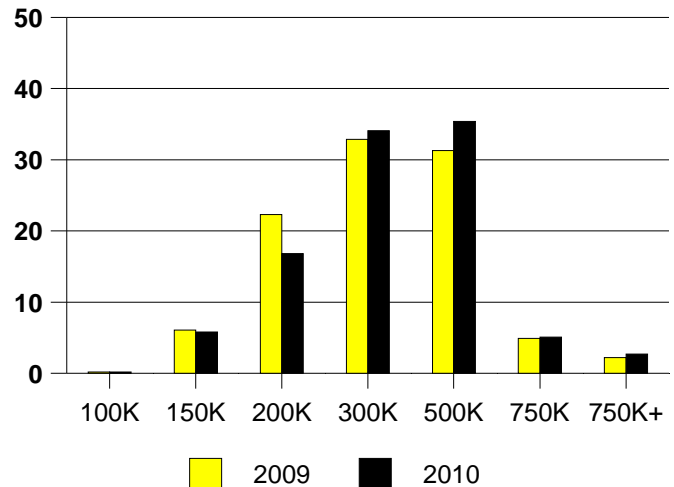
NTREIS Sold informaton as of 01/03/2011

	<u>2009</u>	<u>2010</u>
Total Sold Volume	\$ 145,246,768	\$ 140,418,304
Number of Sales	489	452
Median Sale Price	\$ 264,900	\$ 282,000

DAYS ON THE MARKET (COPPELL)



COPPELL MKT SHARE BY PRICE RANGE



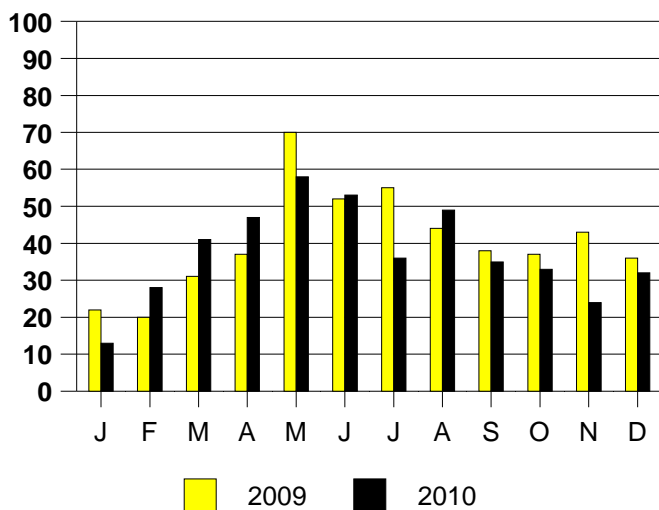
SALE/LIST PRICE RATIO

0K-100K	95.2%
101K-150K	96.6%
151K-200K	98.1%
201K-300K	97.4%
301K-500K	97.1%
501K-750K	95.0%
751K+	95.8%

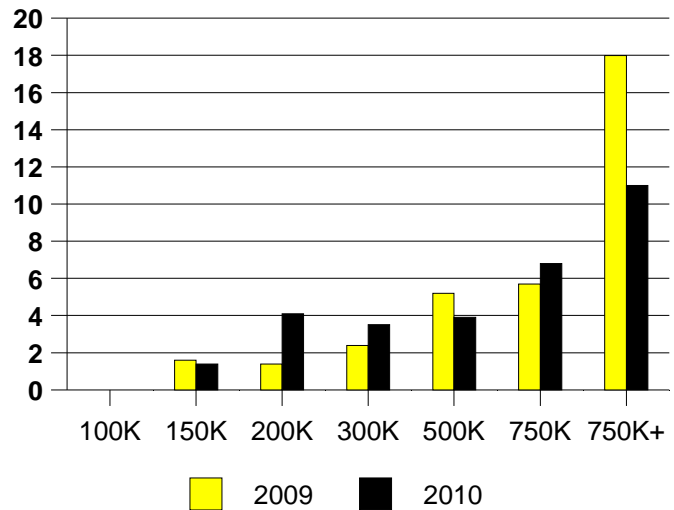
AVERAGE OVERPRICING
Original List Price to Sale Price

2009	4.5%
2010	5.5%

COPPELL MONTHLY SALES



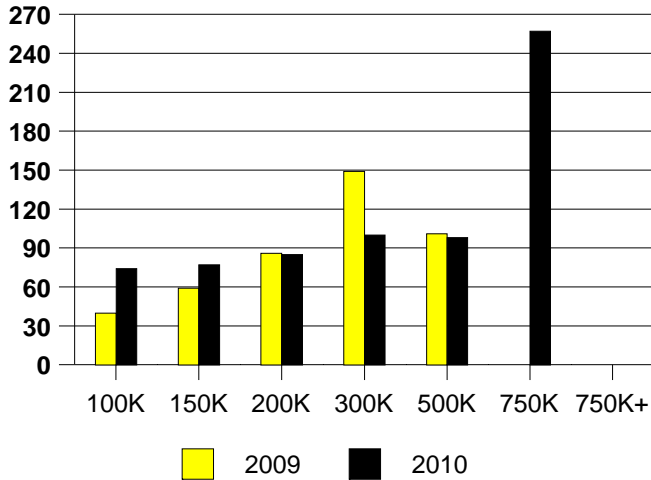
Inventory not shown where no sales
COPPELL MONTHS OF INVENTORY



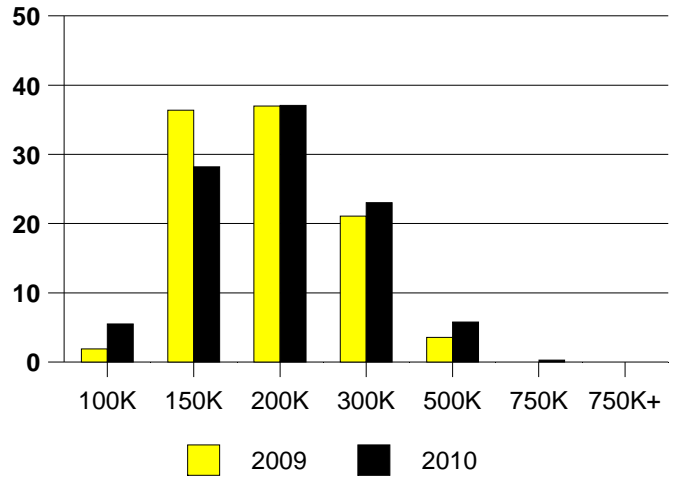
NTREIS Sold informaton as of 01/03/2011

	<u>2009</u>	<u>2010</u>
Total Sold Volume	\$ 64,856,536	\$ 53,572,352
Number of Sales	365	291
Median Sale Price	\$ 159,900	\$ 166,250

DAYS ON THE MARKET (CORINTH)



CORINTH MKT SHARE BY PRICE RANGE



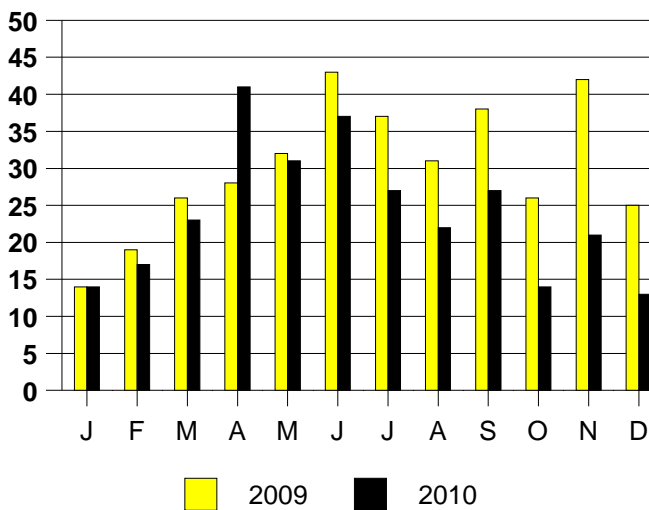
SALE/LIST PRICE RATIO

0K-100K	90.5%
101K-150K	97.8%
151K-200K	98.4%
201K-300K	97.8%
301K-500K	95.6%
501K-750K	104.5%
751K+	NONE

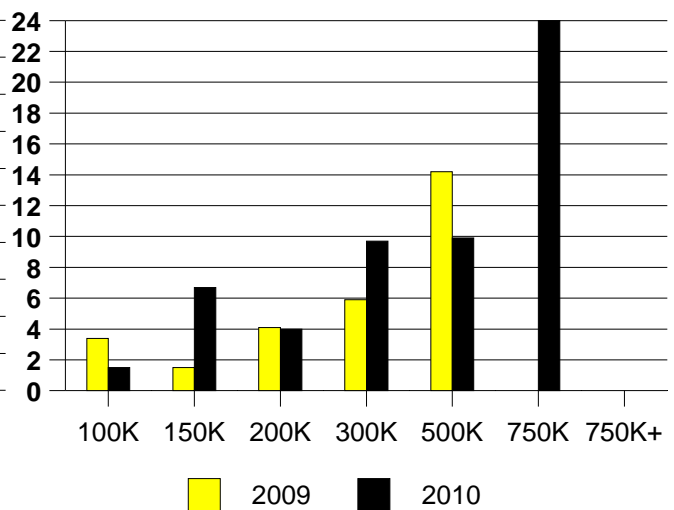
AVERAGE OVERPRICING
Original List Price to Sale Price

2009	5.4%
2010	6.6%

CORINTH MONTHLY SALES



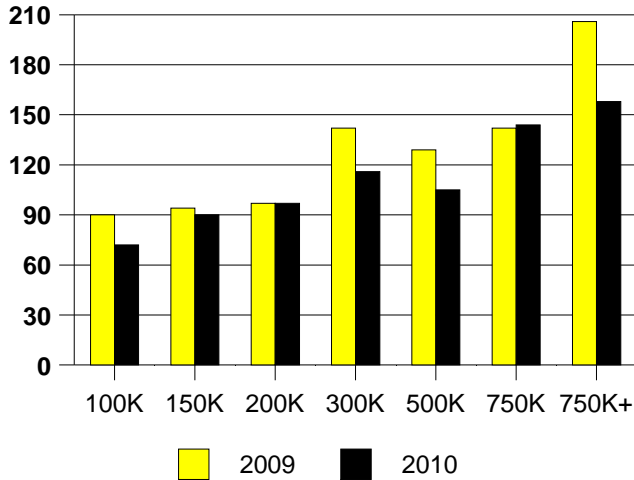
Inventory not shown where no sales
CORINTH MONTHS OF INVENTORY



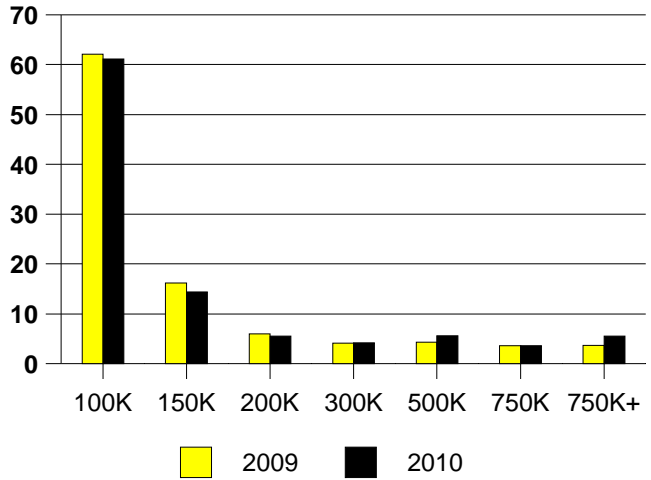
NTREIS Sold informaton as of 01/03/2011

	2009	2010
Total Sold Volume	\$ 221,920,832	\$ 231,273,568
Number of Sales	1433	1225
Median Sale Price	\$ 78,000	\$ 79,000

DAYS ON THE MARKET (DALLAS)



DALLAS MKT SHARE BY PRICE RANGE



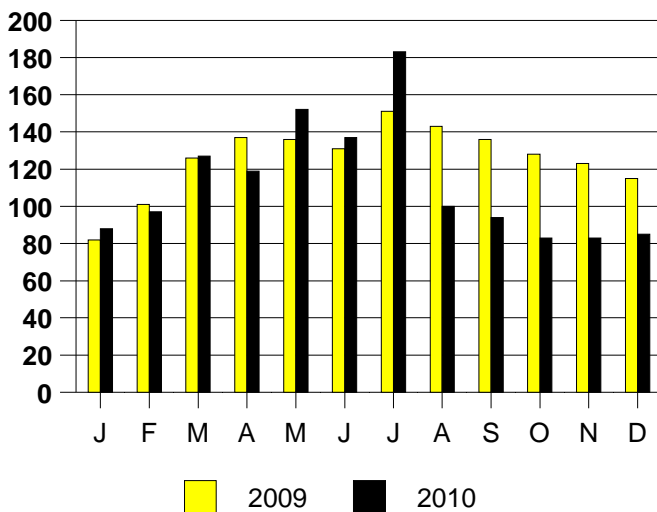
SALE/LIST PRICE RATIO

0K-100K	97.7%
101K-150K	98.8%
151K-200K	97.1%
201K-300K	96.6%
301K-500K	95.9%
501K-750K	95.8%
751K+	93.6%

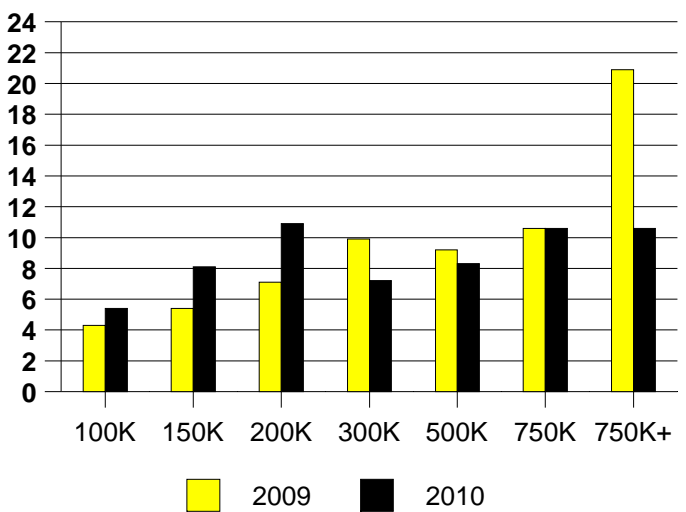
AVERAGE OVERPRICING
Original List Price to Sale Price

2009	13.6%
2010	10.3%

DALLAS MONTHLY SALES



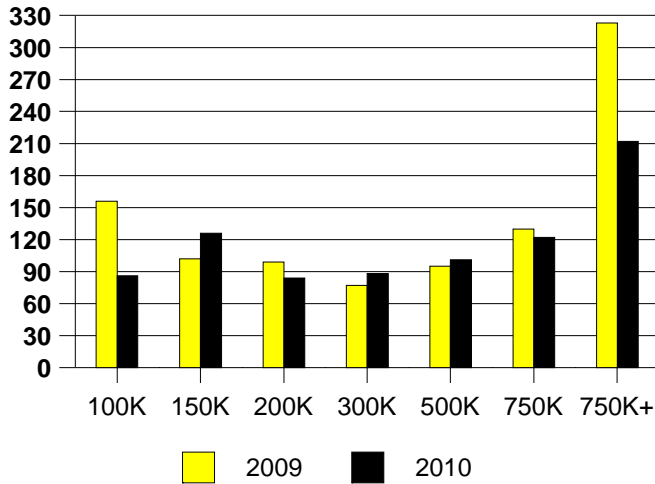
Inventory not shown where no sales
DALLAS MONTHS OF INVENTORY



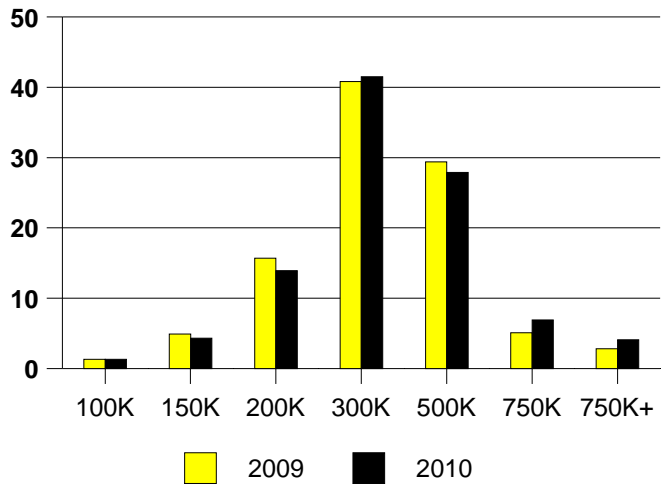
NTREIS Sold informaton as of 01/03/2011

	<u>2009</u>	<u>2010</u>
Total Sold Volume	\$ 267,190,784	\$ 245,917,600
Number of Sales	830	763
Median Sale Price	\$ 263,000	\$ 269,000

DAYS ON THE MARKET (AREA 10)



AREA 10 MKT SHARE BY PRICE RANGE



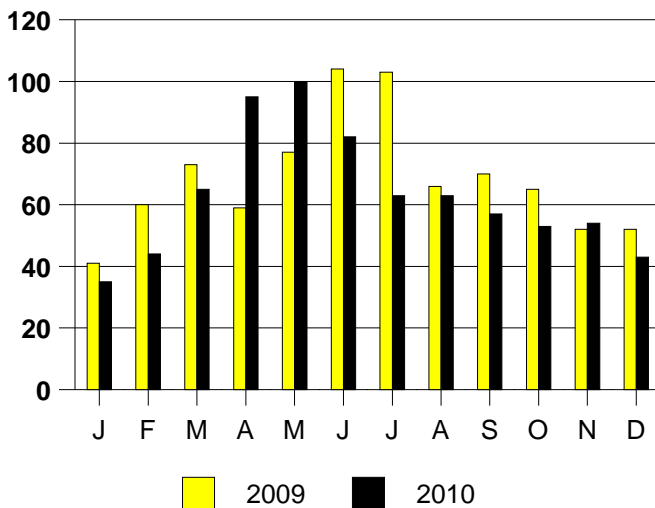
SALE/LIST PRICE RATIO

0K-100K	88.8%
101K-150K	93.6%
151K-200K	95.7%
201K-300K	96.4%
301K-500K	96.3%
501K-750K	96.1%
751K+	94.0%

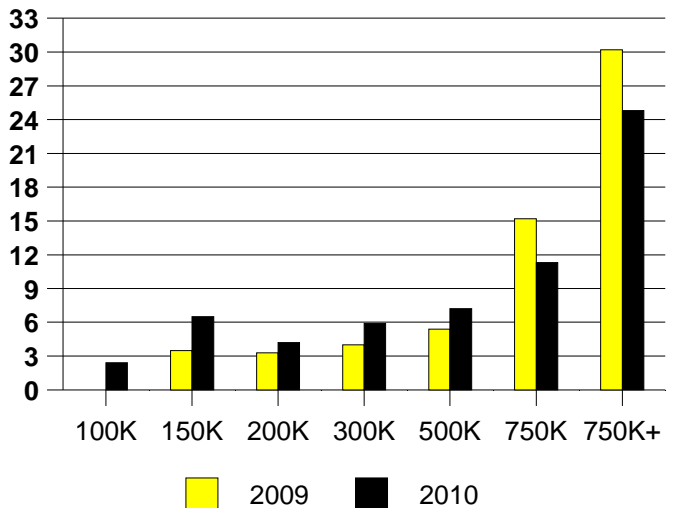
AVERAGE OVERPRICING
Original List Price to Sale Price

2009	8.6%
2010	9.0%

AREA 10 MONTHLY SALES



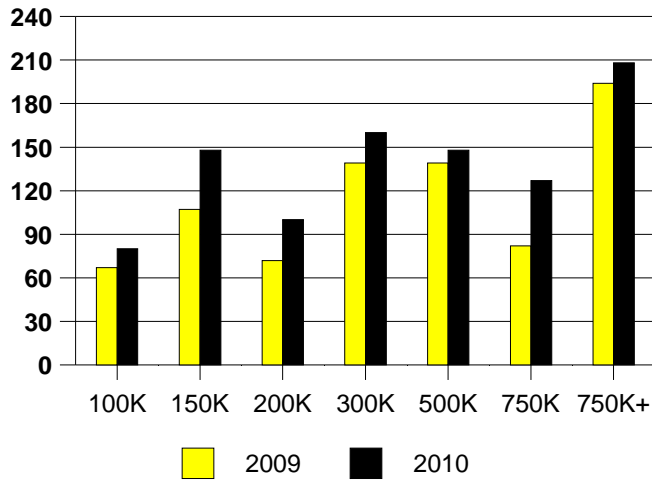
Inventory not shown where no sales
AREA 10 MONTHS OF INVENTORY



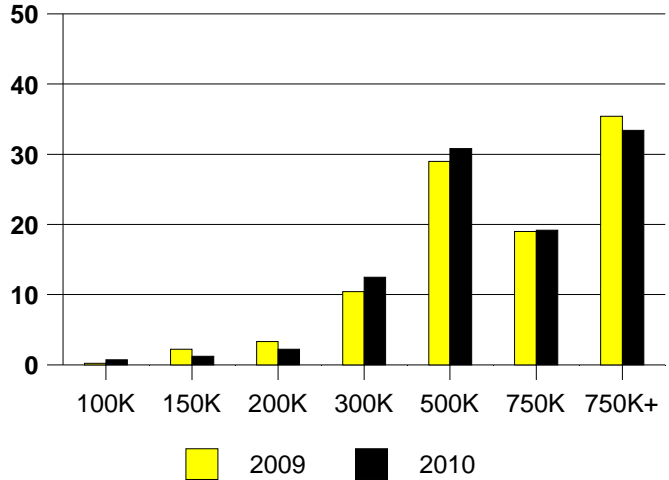
NTREIS Sold informaton as of 01/03/2011

	2009	2010
Total Sold Volume	\$ 388,979,968	\$ 456,576,288
Number of Sales	489	590
Median Sale Price	\$ 550,000	\$ 529,000

DAYS ON THE MARKET (DALLAS NORTH)



DALLAS N MKT SHARE BY PRICE RANGE



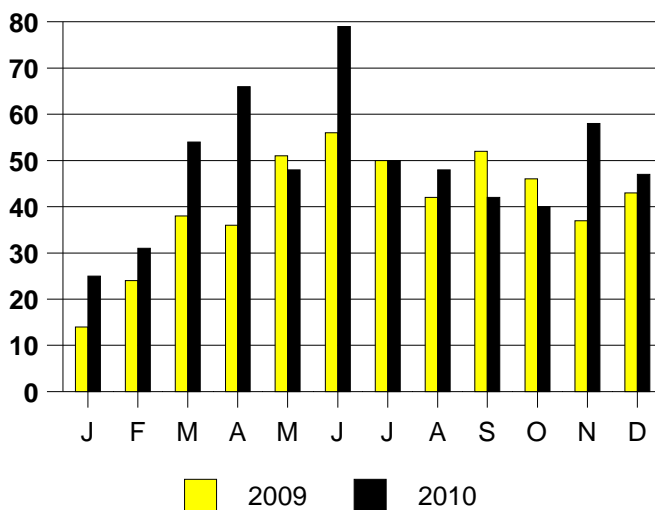
SALE/LIST PRICE RATIO

0K-100K	81.9%
101K-150K	90.8%
151K-200K	94.4%
201K-300K	92.7%
301K-500K	94.6%
501K-750K	94.9%
751K+	94.7%

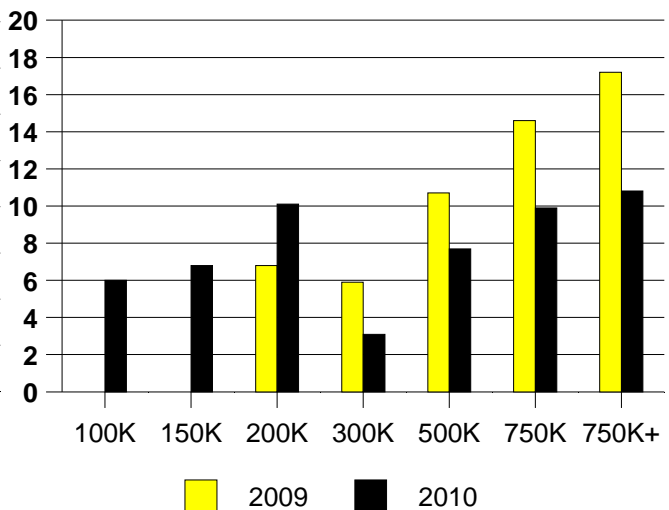
AVERAGE OVERPRICING
Original List Price to Sale Price

2009	13.9%
2010	15.3%

DALLAS NORTH MONTHLY SALES

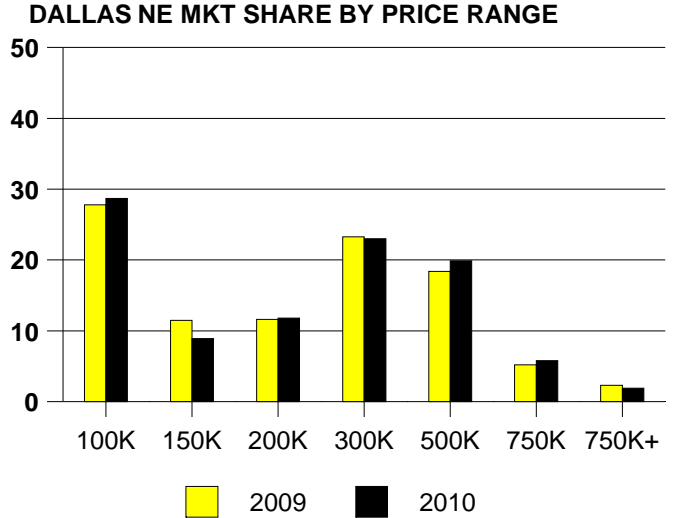
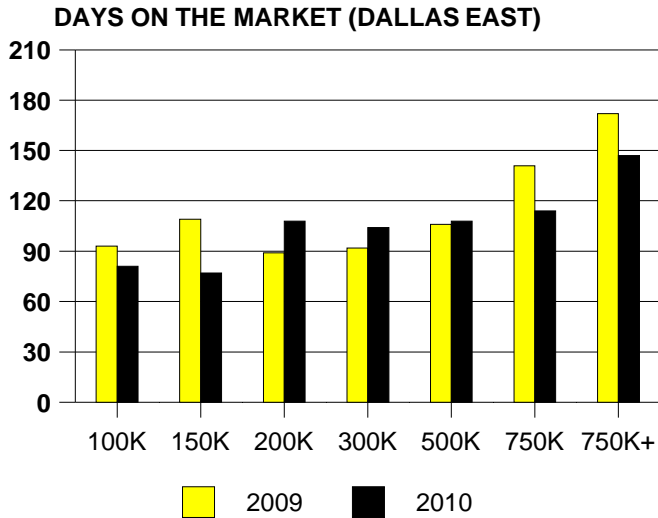


DALLAS NORTH MONTHS OF INVENTORY



NTREIS Sold informaton as of 01/03/2011

	2009	2010
Total Sold Volume	\$ 471,020,928	\$ 413,104,128
Number of Sales	2029	1747
Median Sale Price	\$ 199,000	\$ 204,500



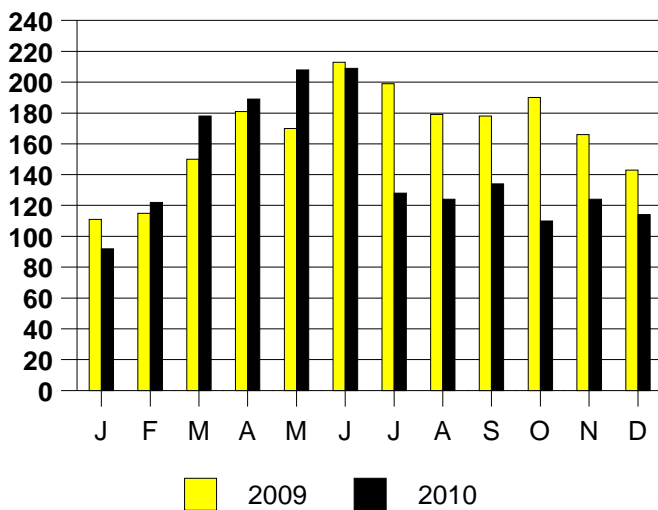
SALE/LIST PRICE RATIO

0K-100K	94.7%
101K-150K	97.1%
151K-200K	97.1%
201K-300K	95.9%
301K-500K	96.3%
501K-750K	96.2%
751K+	96.6%

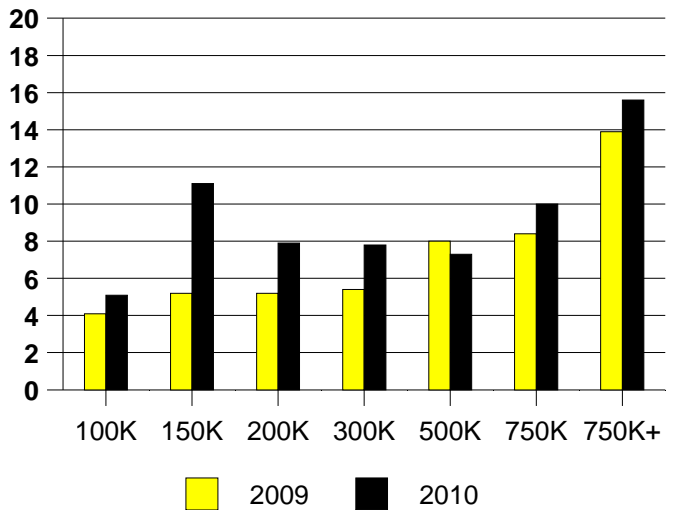
AVERAGE OVERPRICING
Original List Price to Sale Price

2009	12.9%
2010	11.2%

DALLAS EAST MONTHLY SALES



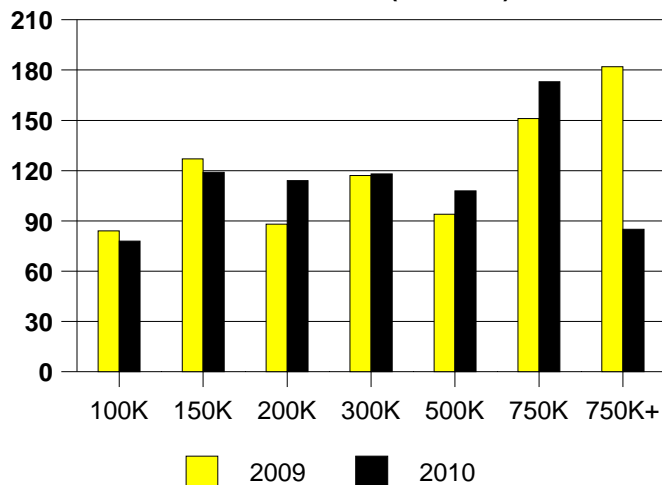
Inventory not shown where no sales
DALLAS EAST MONTHS OF INVENTORY



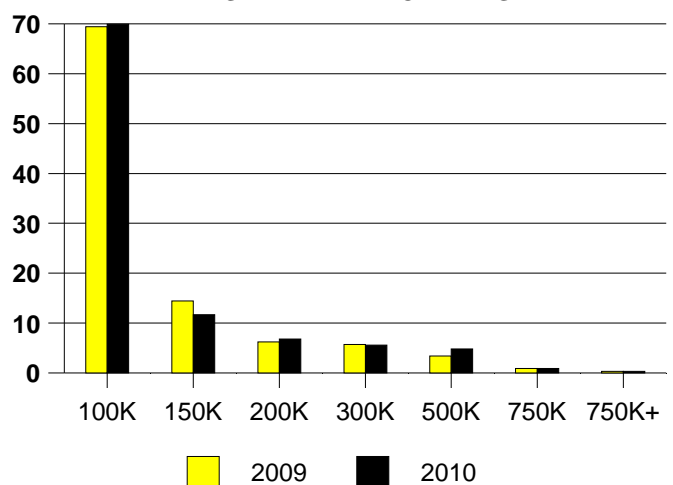
NTREIS Sold informaton as of 01/03/2011

	2009	2010
Total Sold Volume	\$ 102,401,424	\$ 100,804,096
Number of Sales	1053	1008
Median Sale Price	\$ 69,000	\$ 65,638

DAYS ON THE MARKET(AREA 14)



AREA 14 MKT SHARE BY PRICE RANGE



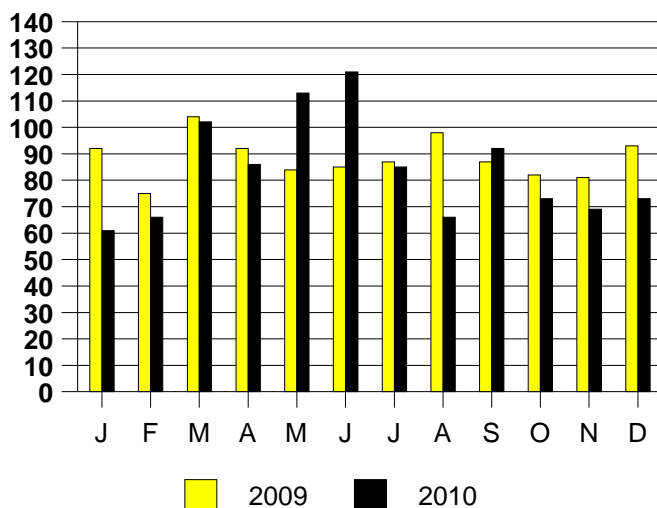
SALE/LIST PRICE RATIO

0K-100K	96.8%
101K-150K	97.2%
151K-200K	96.8%
201K-300K	97.0%
301K-500K	96.8%
501K-750K	94.2%
751K+	98.6%

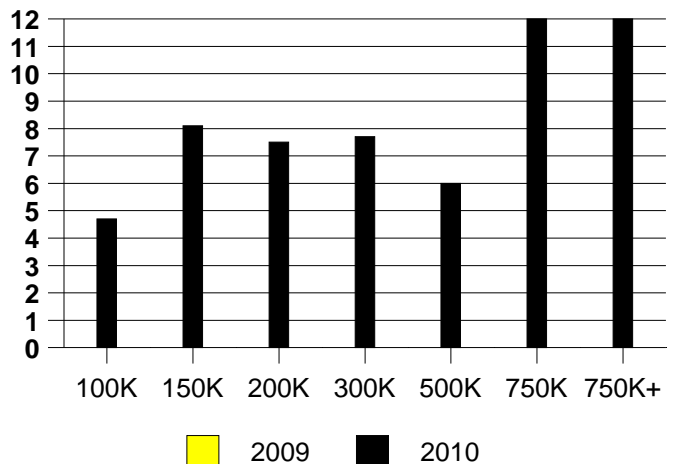
AVERAGE OVERPRICING
Original List Price to Sale Price

2009	17.1%
2010	14.9%

AREA 14 MONTHLY SALES



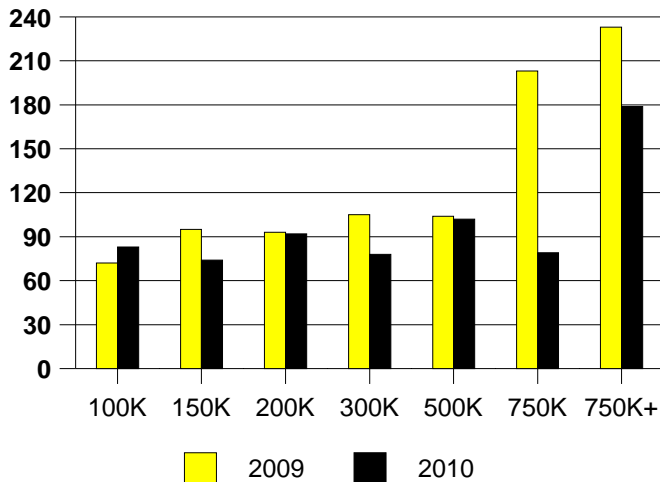
Inventory not shown where no sales
AREA 14 MONTHS OF INVENTORY
2009 Inventory Not Available



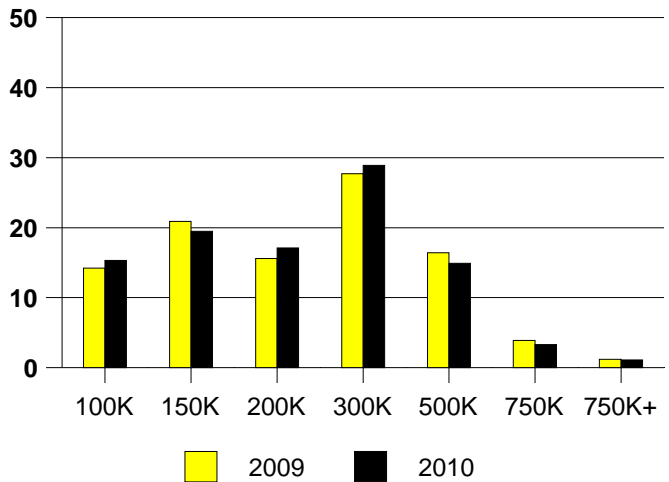
NTREIS Sold informaton as of 01/03/2011

	2009	2010
Total Sold Volume	\$ 111,988,680	\$ 100,790,136
Number of Sales	487	457
Median Sale Price	\$ 189,000	\$ 197,500

AREA 16 DAYS ON THE MARKET



% MARKET SHARE BY PRICE RANGE (AREA 16)



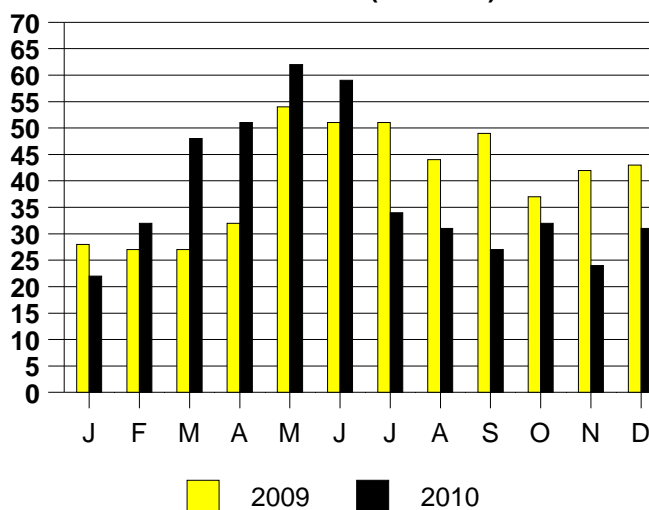
SALE/LIST PRICE RATIO

0K-100K	93.4%
101K-150K	96.2%
151K-200K	96.3%
201K-300K	96.1%
301K-500K	96.1%
501K-750K	96.6%
751K+	97.9%

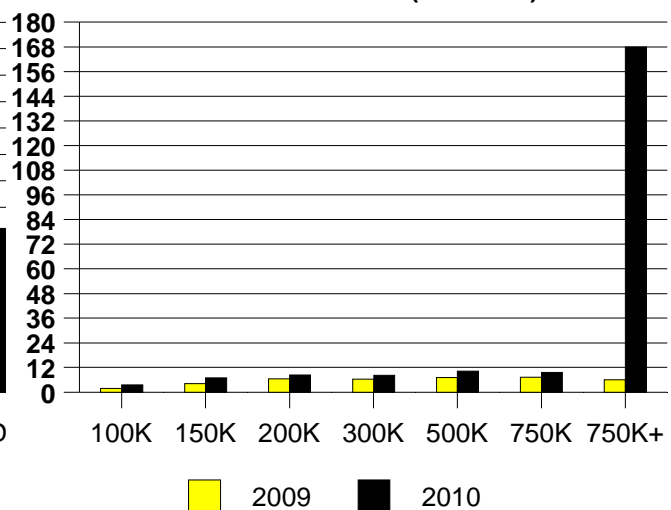
AVERAGE OVERPRICING
Original List Price to Sale Price

2009	11.4%
2010	11.0%

MONTHLY SALES (AREA 16)



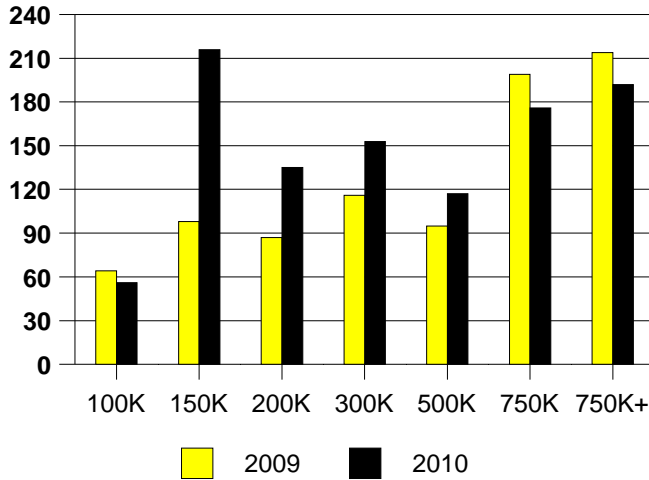
Inventory not shown where no sales
MONTHS OF INVENTORY (AREA 16)



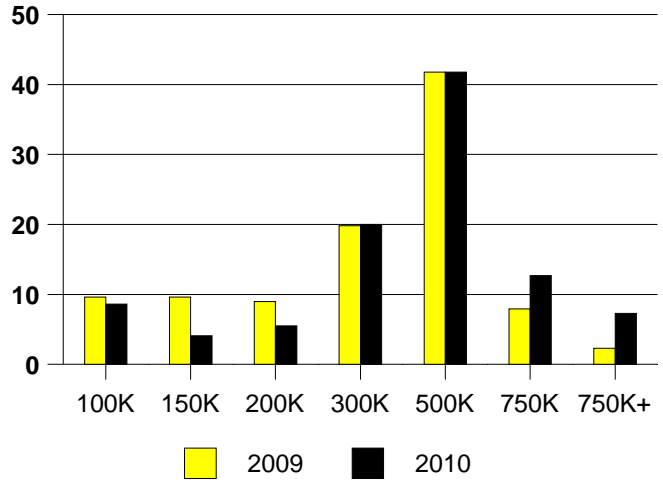
NTREIS Sold informaton as of 01/03/2011

	2009	2010
Total Sold Volume	\$ 56,853,824	\$ 89,569,656
Number of Sales	177	220
Median Sale Price	\$ 318,900	\$ 330,000

DAYS ON THE MARKET (DALLAS OAK LAWN)



DALLAS NE MKT SHARE BY PRICE RANGE



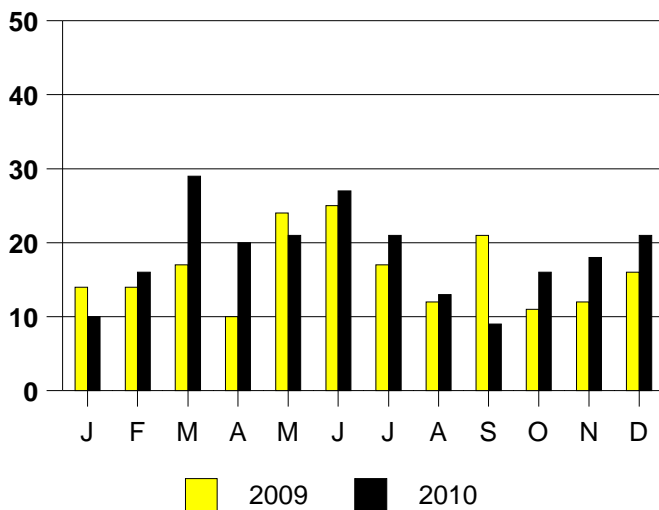
SALE/LIST PRICE RATIO

0K-100K	87.6%
101K-150K	92.5%
151K-200K	95.9%
201K-300K	96.2%
301K-500K	96.1%
501K-750K	95.6%
751K+	96.2%

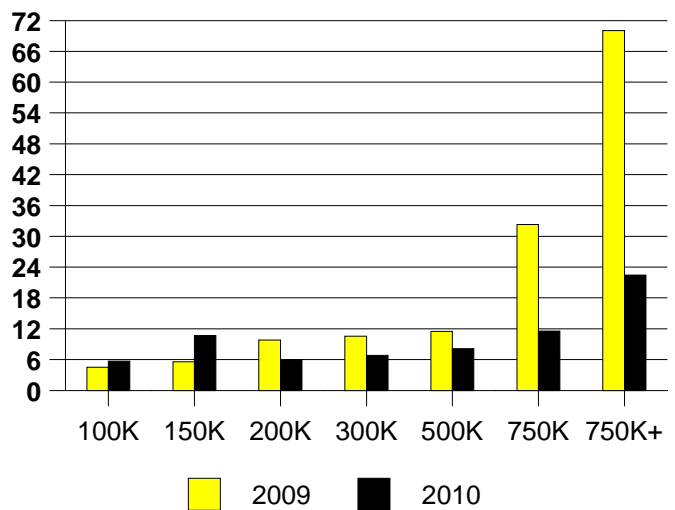
AVERAGE OVERPRICING
Original List Price to Sale Price

2009	9.6%
2010	11.0%

DALLAS OAKLAWN MONTHLY SALES



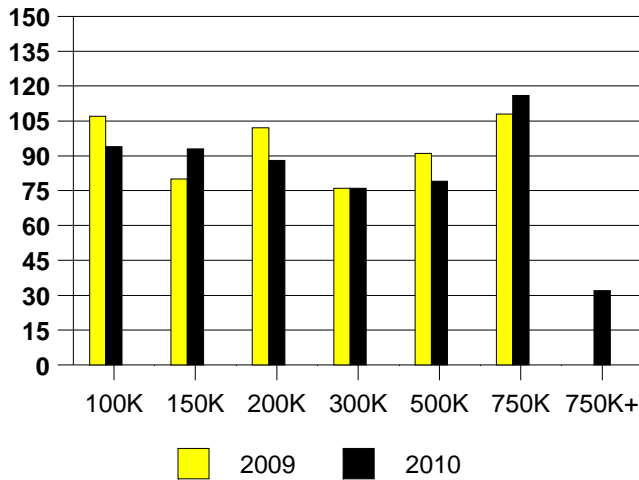
DALLAS OAKLAWN MONTHS OF INVENTORY



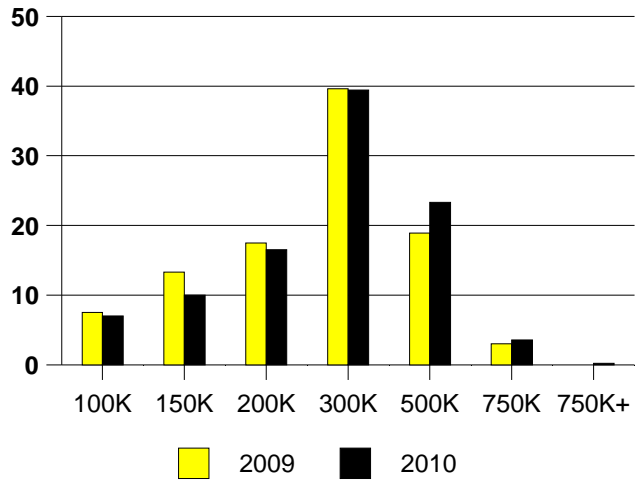
NTREIS Sold informaton as of 01/03/2011

	<u>2009</u>	<u>2010</u>
Total Sold Volume	\$ 135,934,496	\$ 128,511,120
Number of Sales	570	502
Median Sale Price	\$ 228,950	\$ 245,000

DAYS ON THE MARKET (DALLAS NE)



DALLAS NE MKT SHARE BY PRICE RANGE



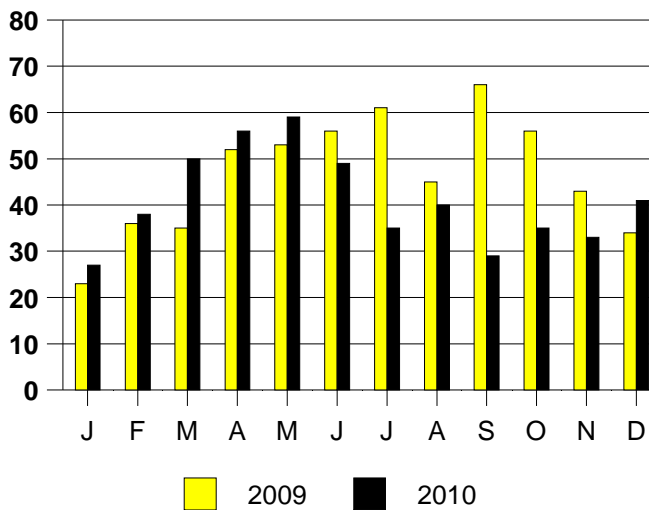
SALE/LIST PRICE RATIO

0K-100K	94.3%
101K-150K	94.1%
151K-200K	96.3%
201K-300K	97.5%
301K-500K	97.3%
501K-750K	96.3%
751K+	100.0%

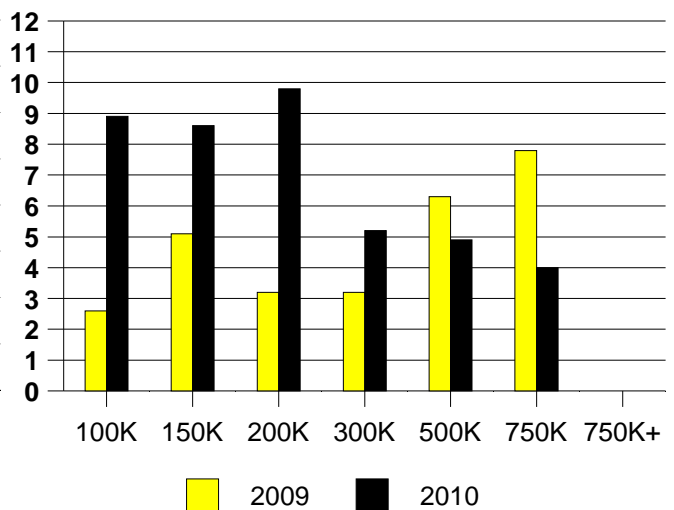
AVERAGE OVERPRICING
Original List Price to Sale Price

2009	8.2%
2010	8.2%

DALLAS NE MONTHLY SALES



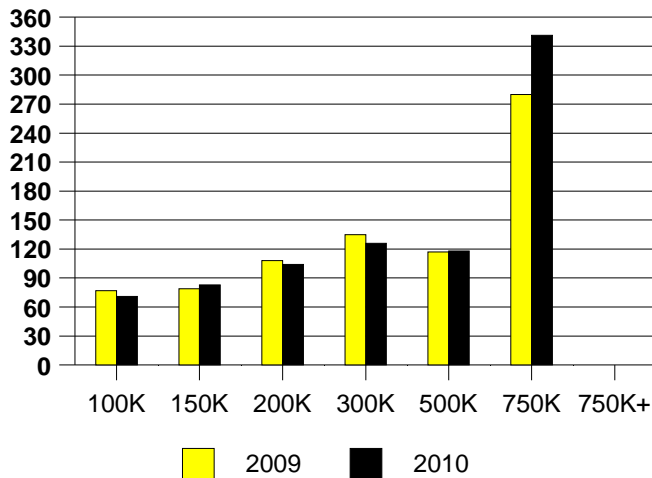
DALLAS NE MONTHS OF INVENTORY



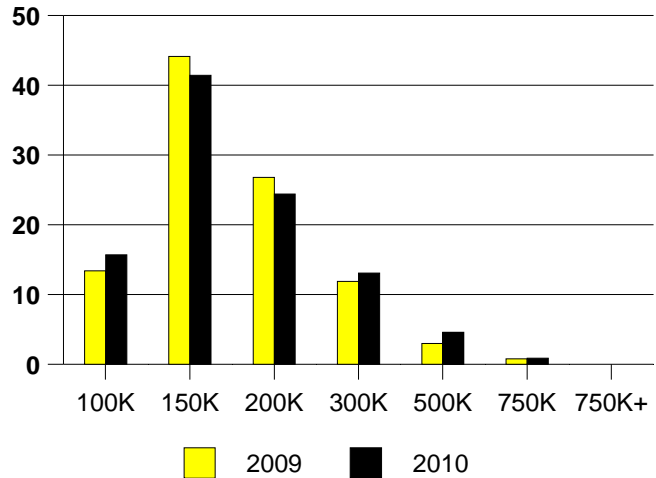
NTREIS Sold informaton as of 01/03/2011

	2009	2010
Total Sold Volume	\$ 165,647,680	\$ 155,562,592
Number of Sales	1055	977
Median Sale Price	\$ 142,500	\$ 142,000

DAYS ON THE MARKET (DENTON)



DENTON MARKET SHARE BY PRICE RANGE



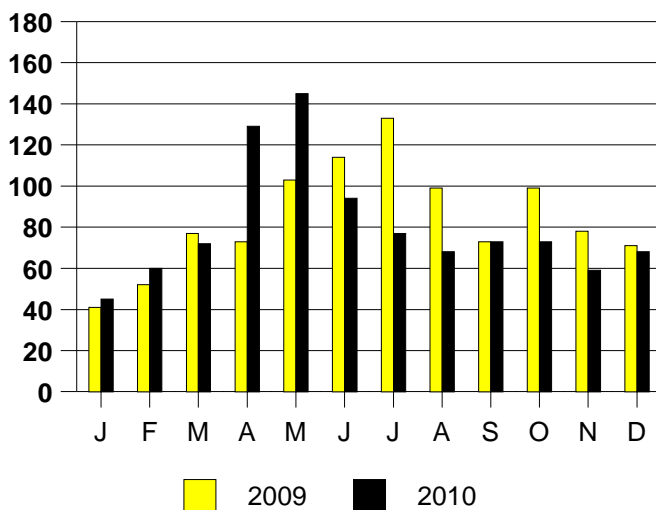
SALE/LIST PRICE RATIO

0K-100K	93.9%
101K-150K	98.2%
151K-200K	98.0%
201K-300K	95.8%
301K-500K	96.0%
501K-750K	97.0%
751K+	NONE

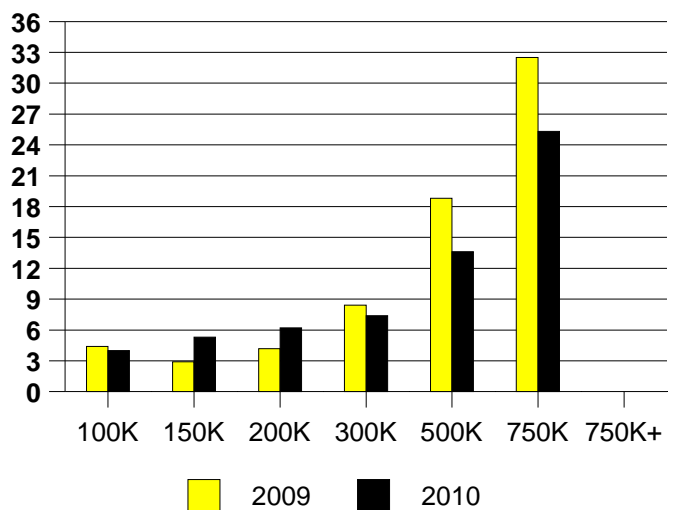
AVERAGE OVERPRICING
Original List Price to Sale Price

2009	6.3%
2010	6.5%

DENTON MONTHLY SALES



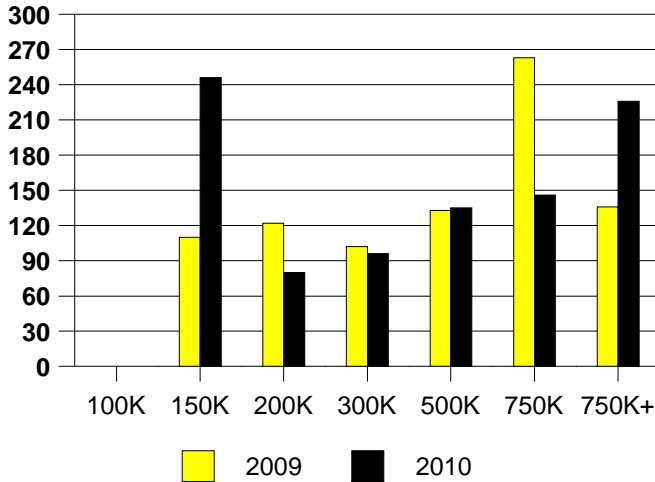
Inventory not shown where no sales
DENTON MONTHS OF INVENTORY



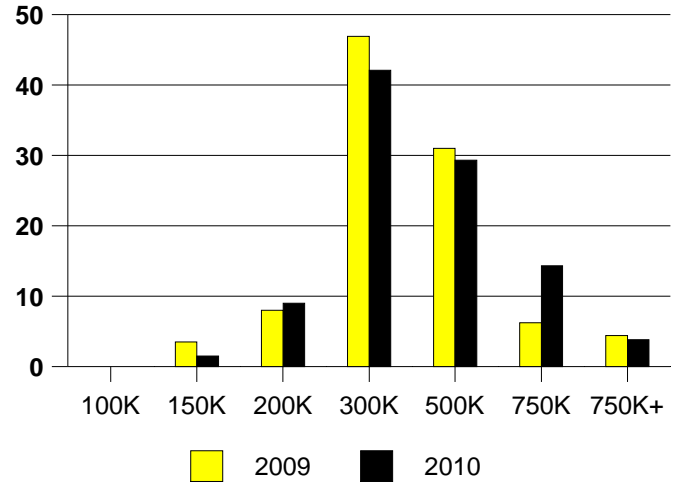
NTREIS Sold informaton as of 01/03/2011

	<u>2009</u>	<u>2010</u>
Total Sold Volume	\$ 39,145,720	\$ 46,606,080
Number of Sales	113	133
Median Sale Price	\$ 265,000	\$ 295,000

DAYS ON THE MARKET (FAIRVIEW)



FAIRVIEW MKT SHARE BY PRICE RANGE



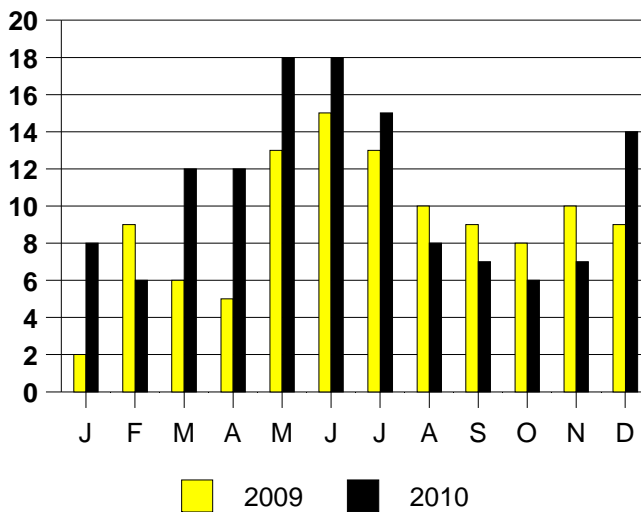
SALE/LIST PRICE RATIO

0K-100K	NONE
101K-150K	94.9%
151K-200K	95.2%
201K-300K	96.0%
301K-500K	96.7%
501K-750K	95.6%
751K+	97.8%

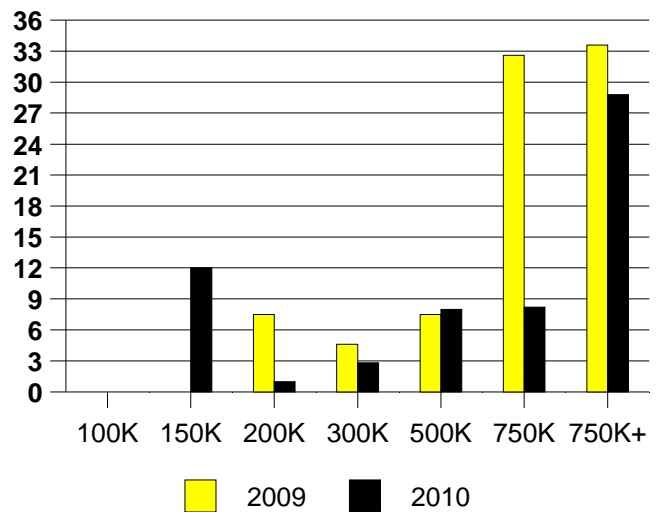
AVERAGE OVERPRICING
Original List Price to Sale Price

2009	9.6%
2010	8.4%

FAIRVIEW MONTHLY SALES



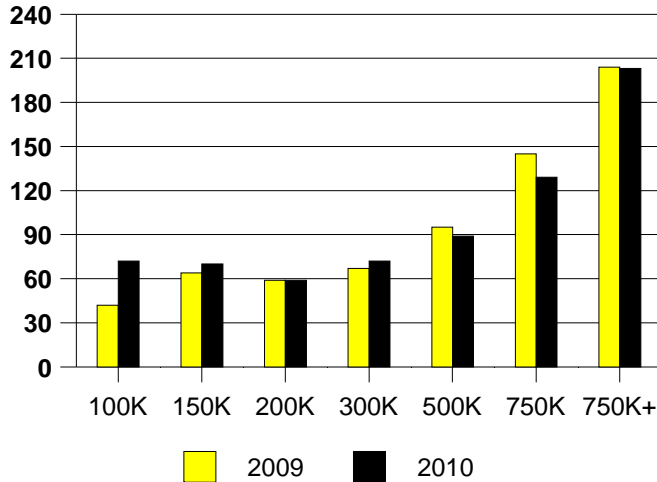
Inventory not shown where no sales
FAIRVIEW MONTHS OF INVENTORY



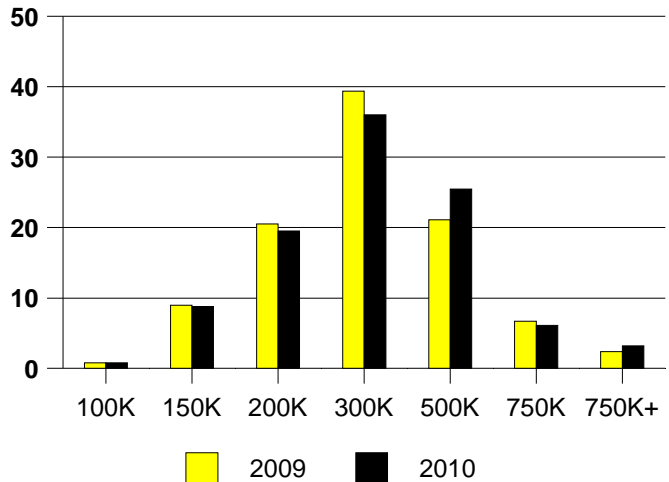
NTREIS Sold informaton as of 01/03/2011

	2009	2010
Total Sold Volume	\$ 293,410,336	\$ 281,294,208
Number of Sales	1009	927
Median Sale Price	\$ 247,500	\$ 261,500

DAYS ON THE MARKET (FLOWER MOUND)



FLOWER MOUND MKT SHARE BY PRICE



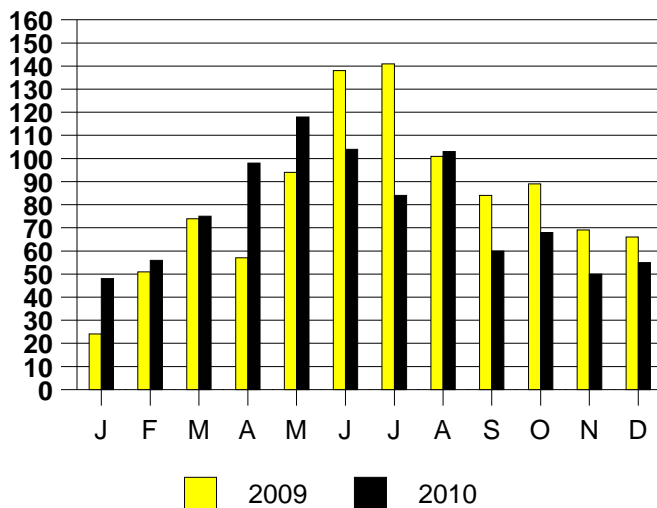
SALE/LIST PRICE RATIO

0K-100K	92.1%
101K-150K	97.5%
151K-200K	97.7%
201K-300K	97.8%
301K-500K	97.4%
501K-750K	97.3%
751K+	95.6%

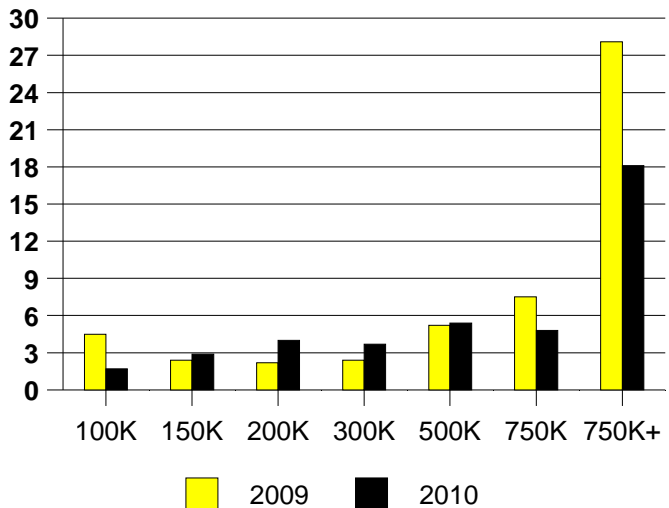
AVERAGE OVERPRICING
Original List Price to Sale Price

2009	5.4%
2010	5.5%

FLOWER MOUND MONTHLY SALES



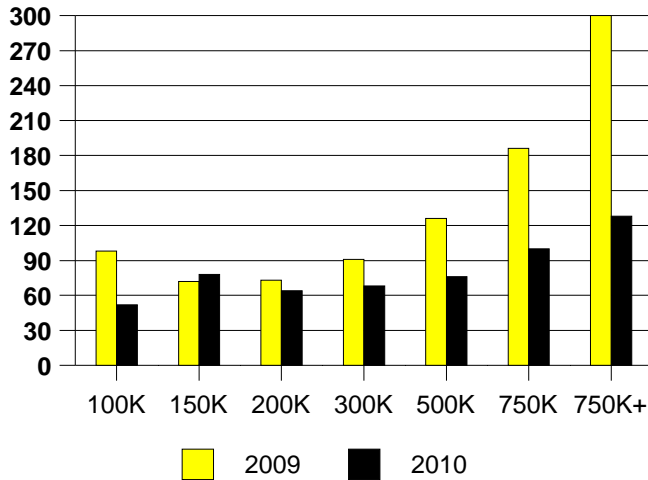
FLOWER MOUND MONTHS OF INVENTORY



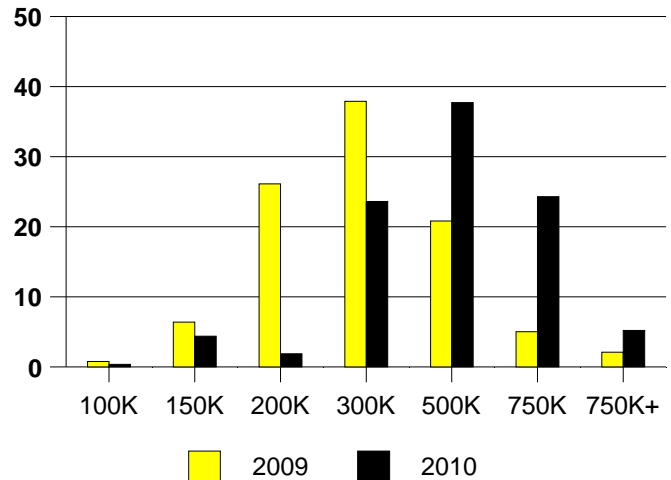
NTREIS Sold informaton as of 01/03/2011

	2009	2010
Total Sold Volume	\$ 687,201,152	\$ 649,727,936
Number of Sales	2425	2226
Median Sale Price	\$ 240,000	\$ 249,000

DAYS ON MARKET(FRISCO)



FRISCO MKT SHARE BY PRICE RANGE



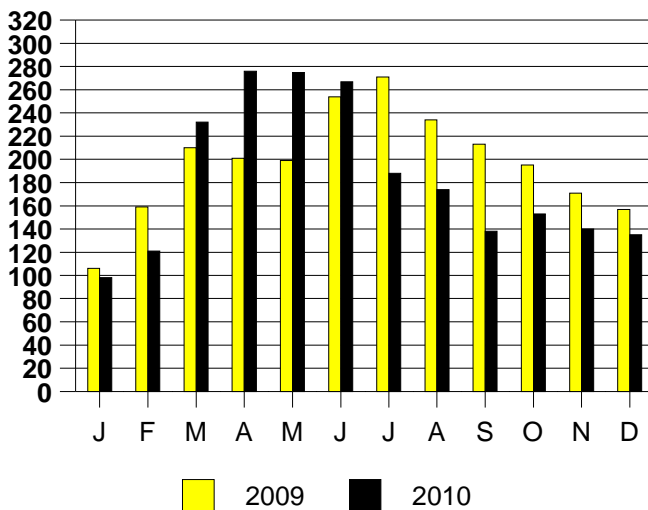
SALE/LIST PRICE RATIO

0K-100K	86.1%
101K-150K	95.3%
151K-200K	97.5%
201K-300K	97.6%
301K-500K	97.0%
501K-750K	96.1%
751K+	95.9%

AVERAGE OVERPRICING
Original List Price to Sale Price

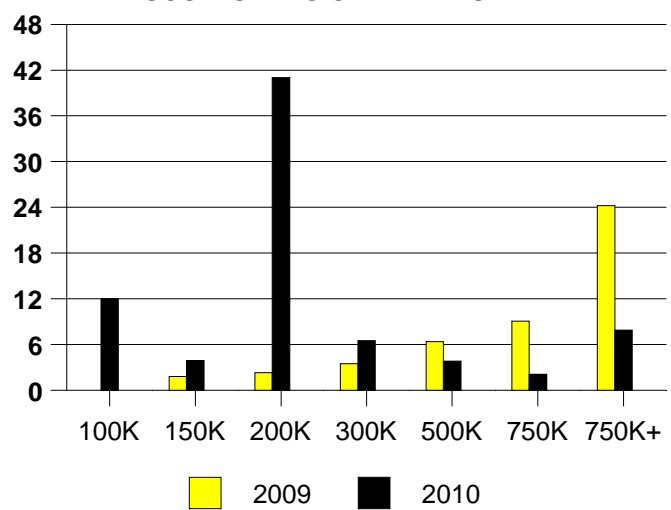
2009	7.8%
2010	7.0%

FRISCO MONTHLY SALES



Inventory not shown where no sales

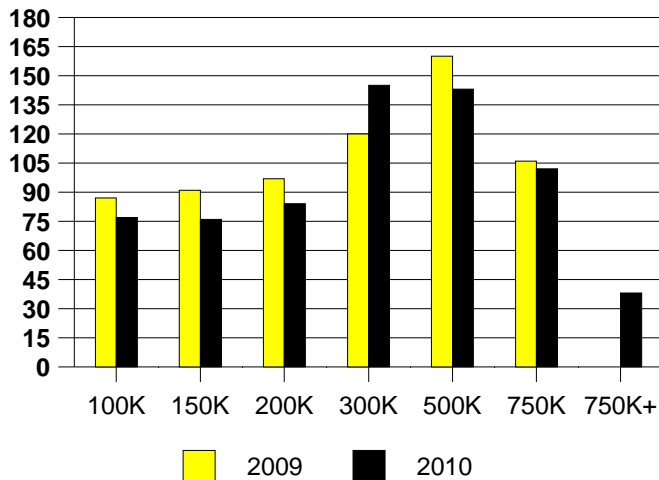
FRISCO MONTHS OF INVENTORY



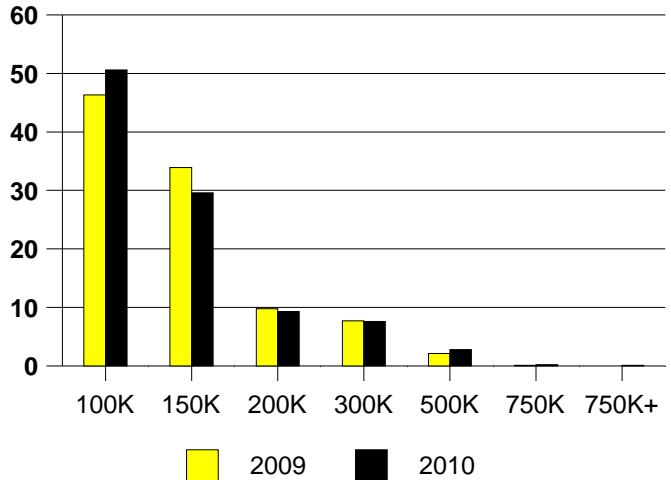
NTREIS Sold informaton as of 01/03/2011

	<u>2009</u>	<u>2010</u>
Total Sold Volume	\$ 241,126,544	\$ 208,860,800
Number of Sales	2041	1772
Median Sale Price	\$ 105,500	\$ 100,000

DAYS ON THE MARKET (GARLAND)



GARLAND MKT SHARE BY PRICE RANGE



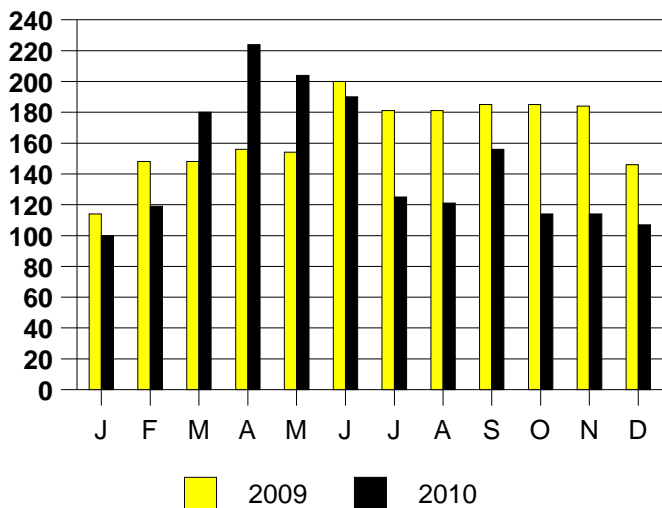
SALE/LIST PRICE RATIO

0K-100K	96.1%
101K-150K	97.6%
151K-200K	96.6%
201K-300K	95.9%
301K-500K	94.0%
501K-750K	97.4%
751K+	94.0%

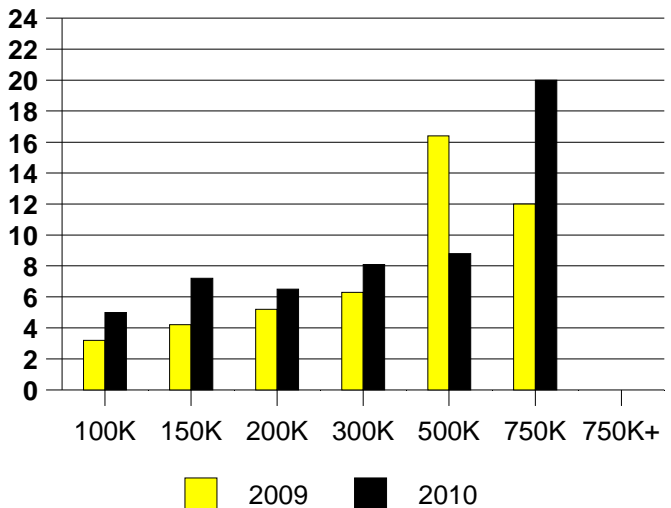
AVERAGE OVERPRICING
Original List Price to Sale Price

2009	8.5%
2010	9.9%

GARLAND MONTHLY SALES

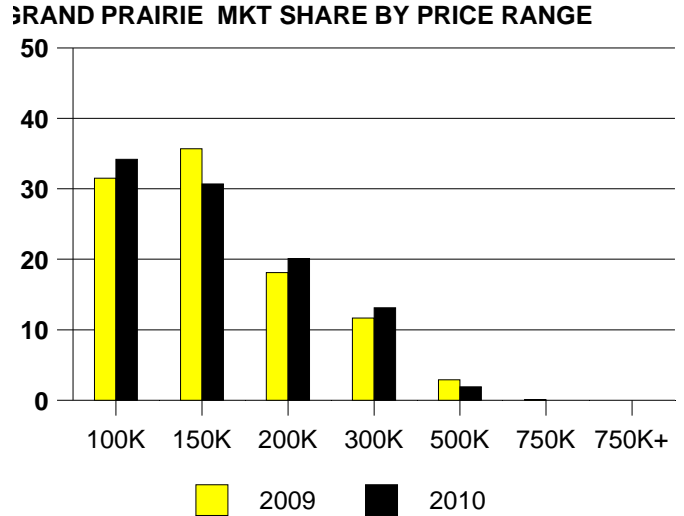
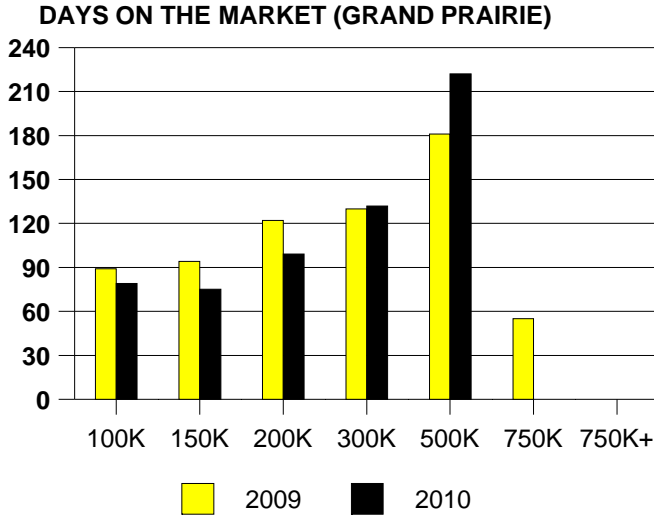


Inventory not shown where no sales
GARLAND MONTHS OF INVENTORY



NTREIS Sold informaton as of 01/03/2011

	<u>2009</u>	<u>2010</u>
Total Sold Volume	\$ 213,569,536	\$ 182,298,880
Number of Sales	1567	1354
Median Sale Price	\$ 126,000	\$ 125,000

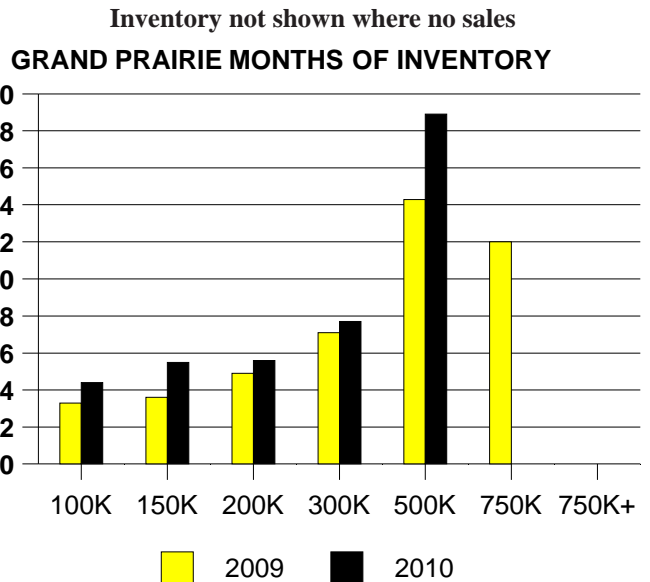
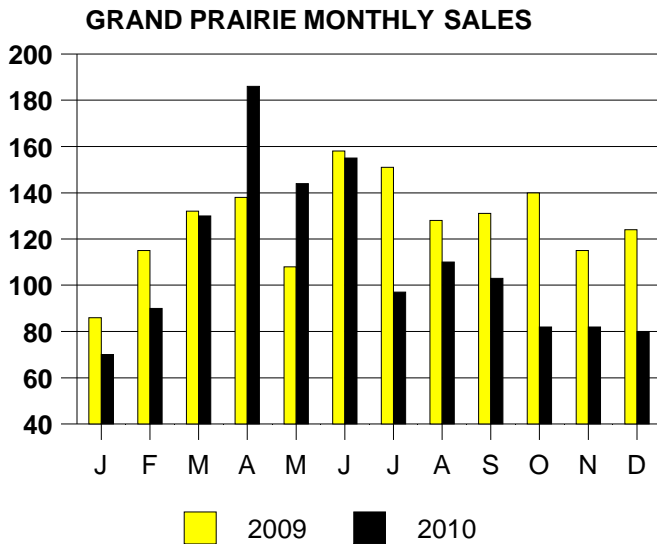


SALE/LIST PRICE RATIO

0K-100K	96.5%
101K-150K	98.7%
151K-200K	98.2%
201K-300K	95.6%
301K-500K	94.1%
501K-750K	NONE
751K+	NONE

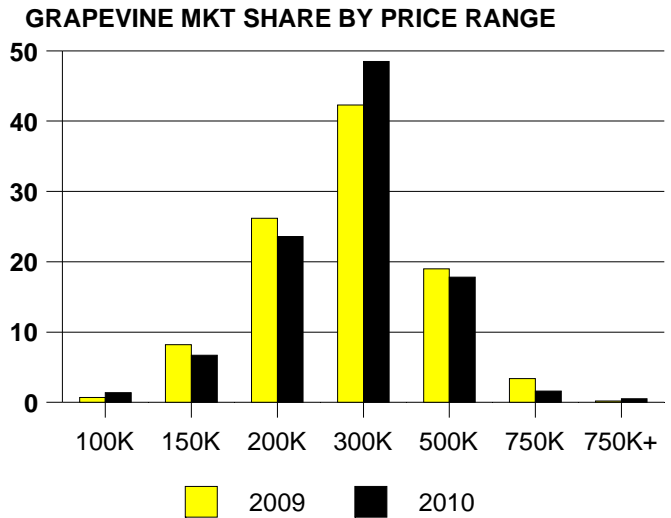
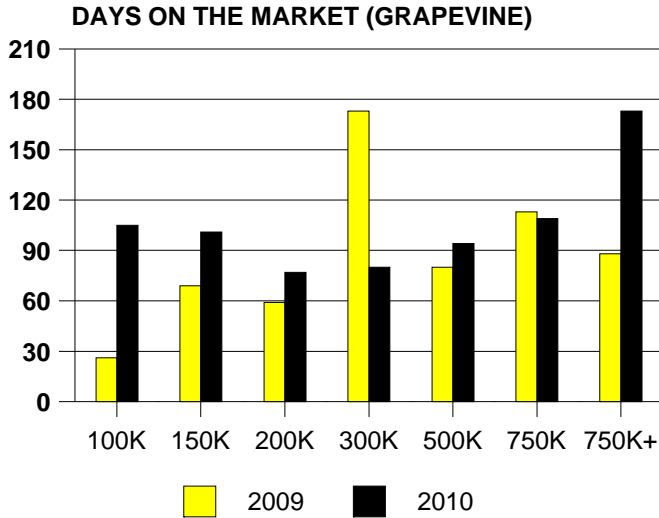
AVERAGE OVERPRICING
Original List Price to Sale Price

2009	9.7%
2010	8.5%



NTREIS Sold informaton as of 01/03/2011

	<u>2009</u>	<u>2010</u>
Total Sold Volume	\$ 104,734,640	\$ 108,944,928
Number of Sales	416	433
Median Sale Price	\$ 233,050	\$ 237,500



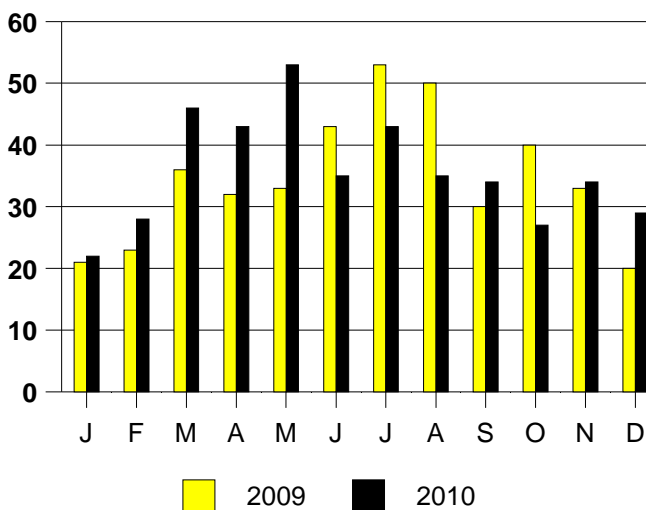
SALE/LIST PRICE RATIO

0K-100K	93.3%
101K-150K	94.2%
151K-200K	98.1%
201K-300K	97.5%
301K-500K	96.1%
501K-750K	94.9%
751K+	97.3%

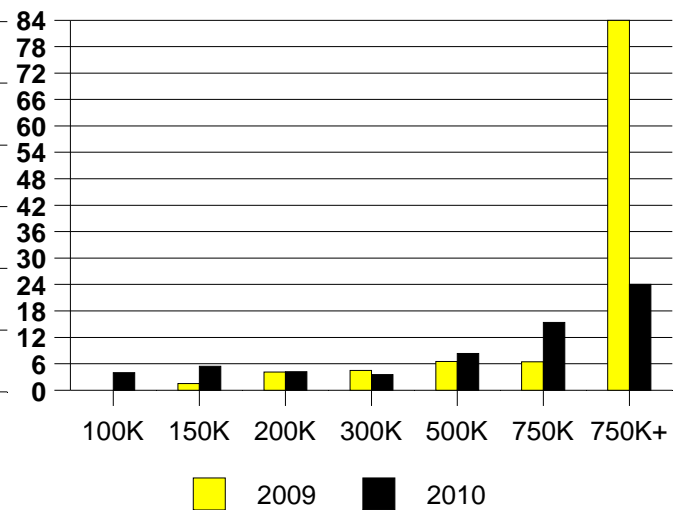
AVERAGE OVERPRICING
Original List Price to Sale Price

2009	5.7%
2010	7.6%

GRAPEVINE MONTHLY SALES



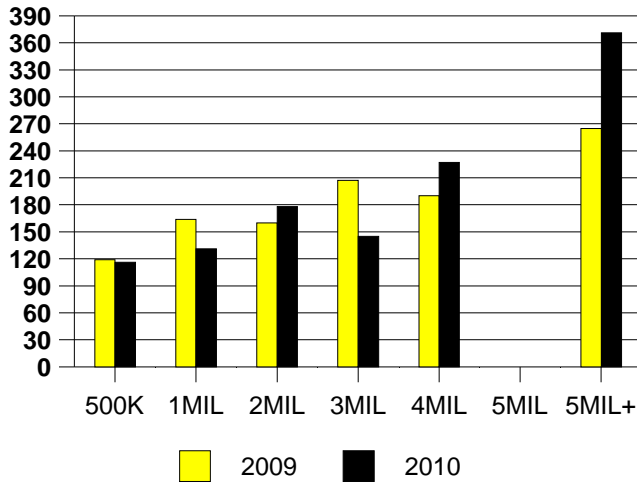
GRAPEVINE MONTHS OF INVENTORY



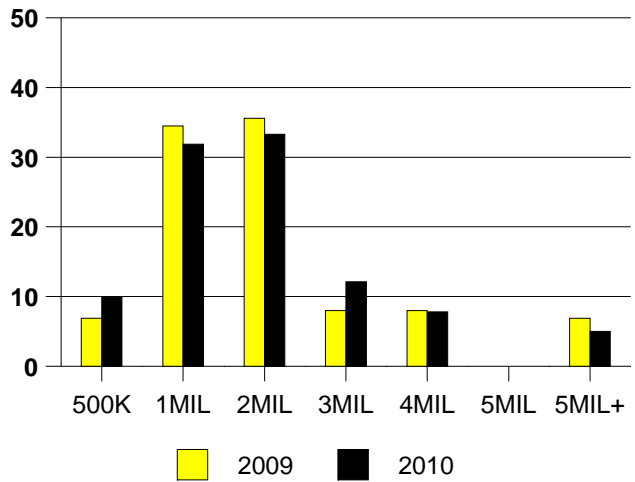
NTREIS Sold informaton as of 01/03/2011

	2009	2010
Total Sold Volume	\$ 154,151,104	\$ 237,836,688
Number of Sales	87	141
Median Sale Price	\$ 1,200,000	\$ 1,115,000

DAYS ON THE MARKET (HP)



MKT SHARE BY PRICE RANGE (HP)



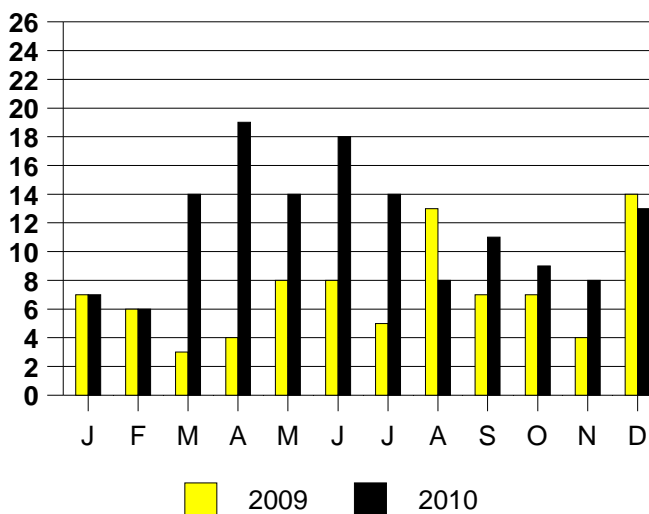
SALE/LIST PRICE RATIO

0K-500K	94.1%
501K-1MIL	95.0%
1MIL-2MIL	93.8%
2MIL-3MIL	94.1%
3MIL-4MIL	93.0%
4MIL-5MIL	NONE
5MIL+	98.2%

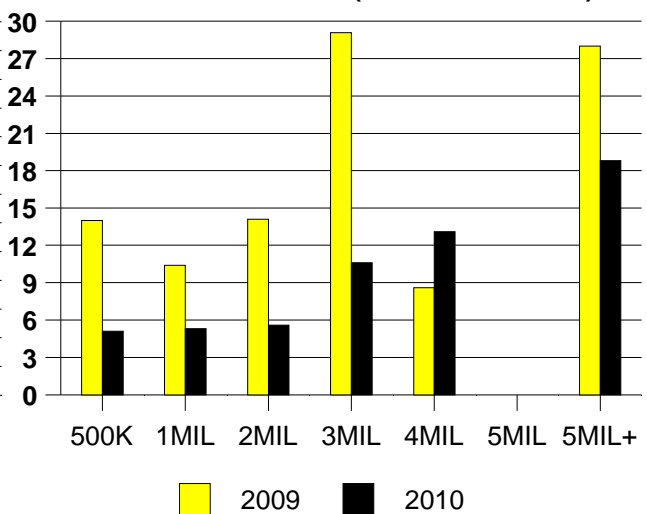
AVERAGE OVERPRICING

Orig List Price to Sale Price	
2009	15.0%
2010	15.6%

HIGHLAND PARK MONTHLY SALES

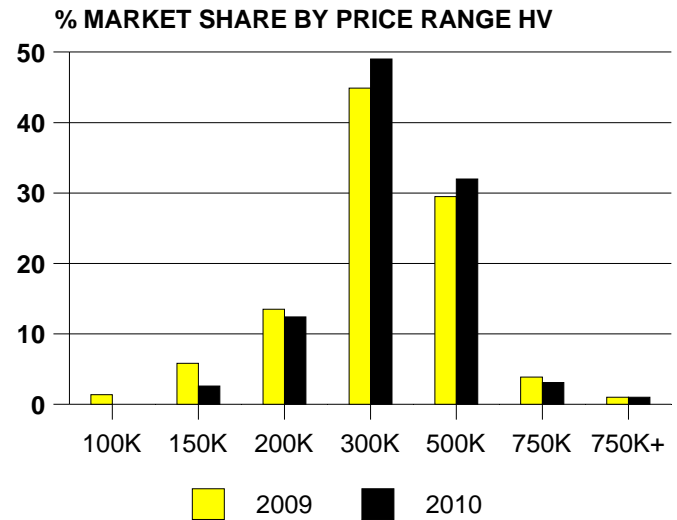
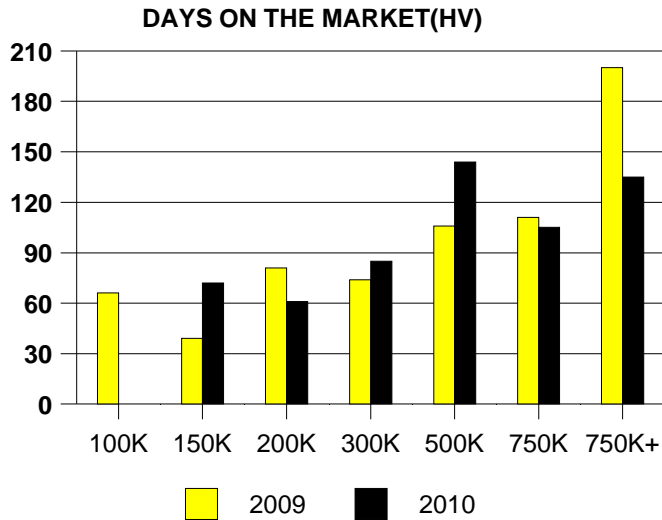


MONTHS OF INVENTORY (HIGHLAND PARK)
Inventory not shown where no sales



NTREIS Sold information as of 01/03/2011

	2009	2010
Total Sold Volume	\$59,480,996	\$ 57,719,688
Number of Sales	207	194
Median Sale Price	\$ 265,000	\$ 273,500



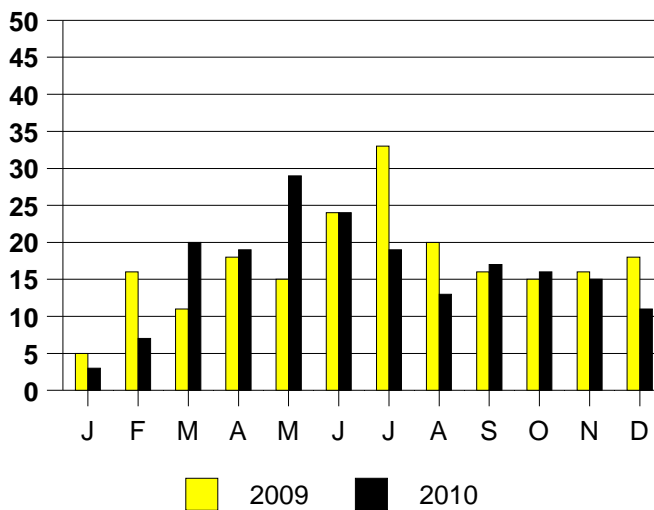
SALE/LIST PRICE RATIO

0K-100K	NONE
101K-150K	92.3%
151K-200K	97.1%
201K-300K	97.7%
301K-500K	96.5%
501K-750K	95.8%
751K+	86.2%

AVERAGE OVERPRICING
Original List Price to Sale Price

2009	6.6%
2010	6.1%

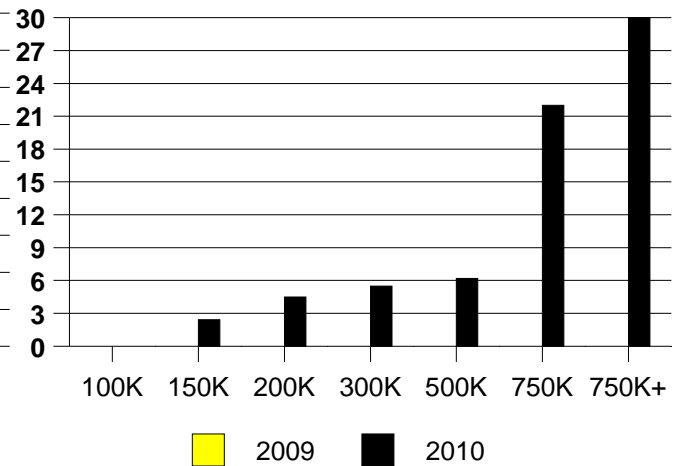
HIGH VILLAGE MONTHLY SALES



Inventory not shown where no sales

MONTHS OF INVENTORY HV

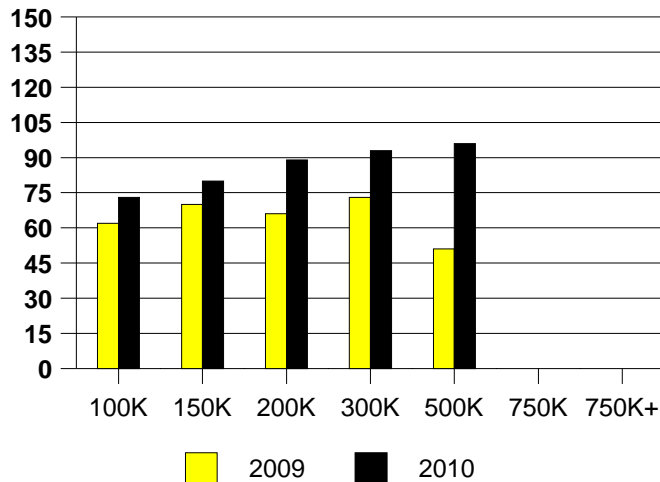
2009 Inventory not Available



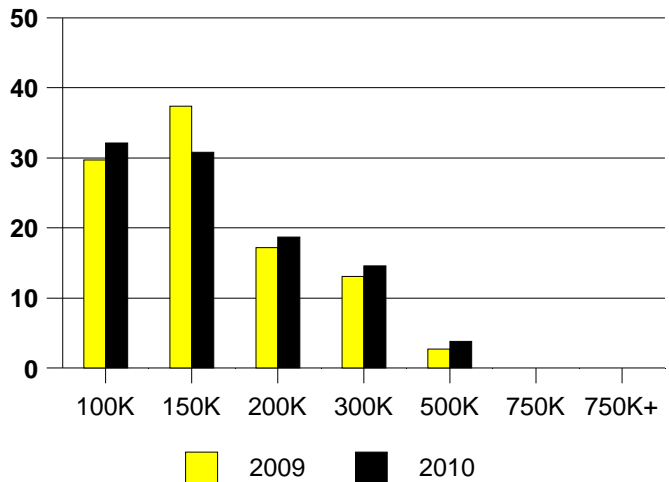
NTREIS Sold informaton as of 01/03/2011

	<u>2009</u>	<u>2010</u>
Total Sold Volume	\$ 46,916,516	\$ 44,678,500
Number of Sales	337	315
Median Sale Price	\$ 128,500	\$ 130,000

DAYS ON THE MARKET (HURST)



HURST MKT SHARE BY PRICE RANGE



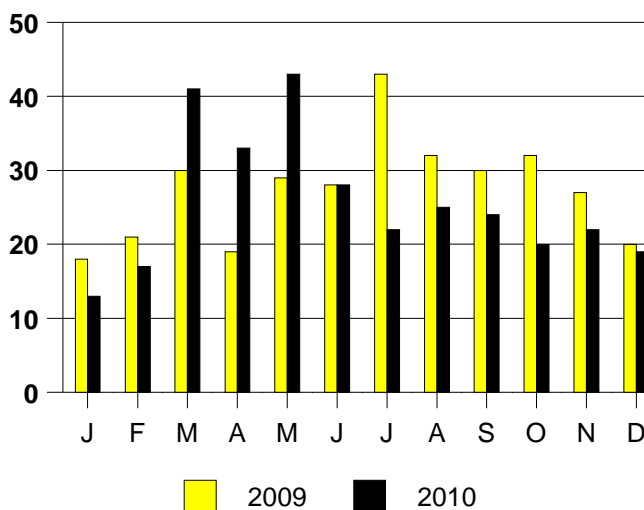
SALE/LIST PRICE RATIO

0K-100K	94.4%
101K-150K	97.9%
151K-200K	97.0%
201K-300K	97.5%
301K-500K	97.6%
501K-750K	NONE
751K+	NONE

AVERAGE OVERPRICING
Original List Price to Sale Price

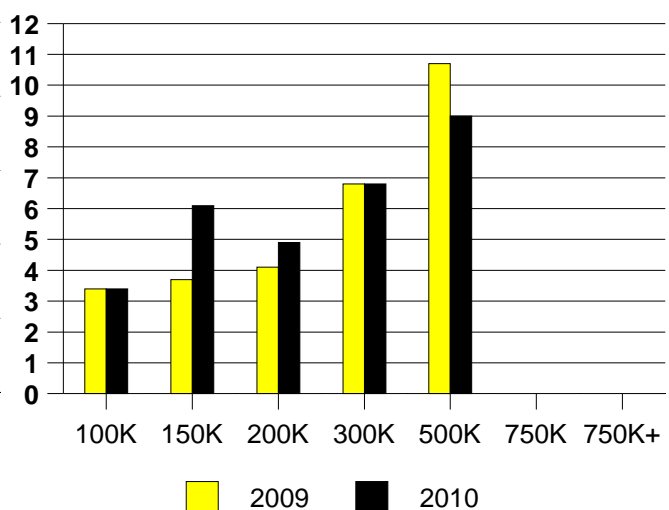
2009	6.7%
2010	8.8%

HURST MONTHLY SALES



Inventory not shown where no sales

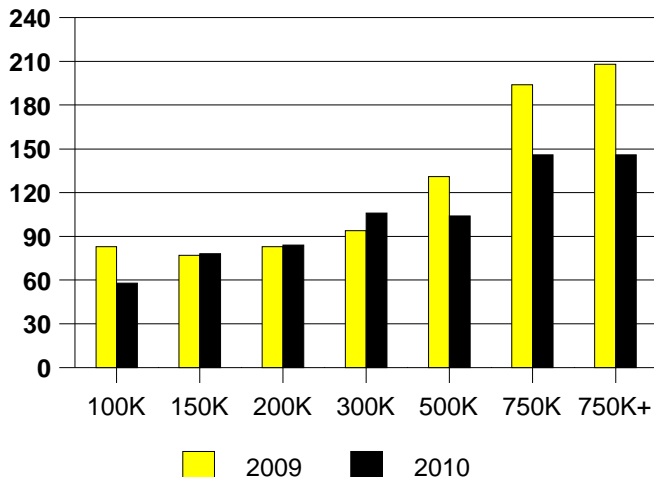
HURST MONTHS OF INVENTORY



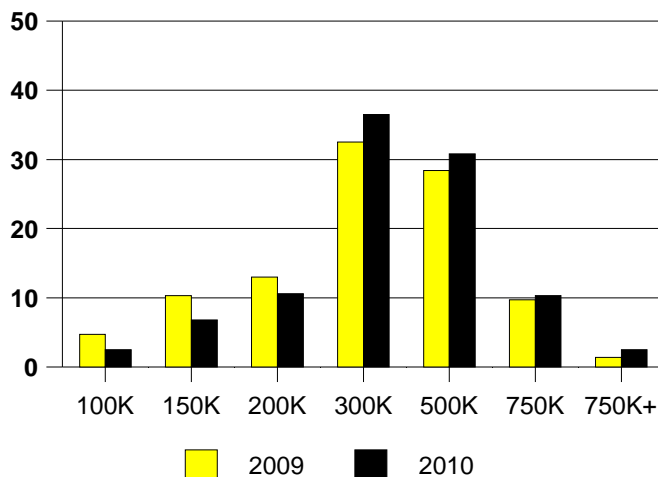
NTREIS Sold informaton as of 01/03/2011

	<u>2009</u>	<u>2010</u>
Total Sold Volume	\$ 210,768,768	\$ 202,783,744
Number of Sales	701	633
Median Sale Price	\$ 271,780	\$ 282,000

DAYS ON THE MARKET (KELLER)



KELLER MKT SHARE BY PRICE RANGE



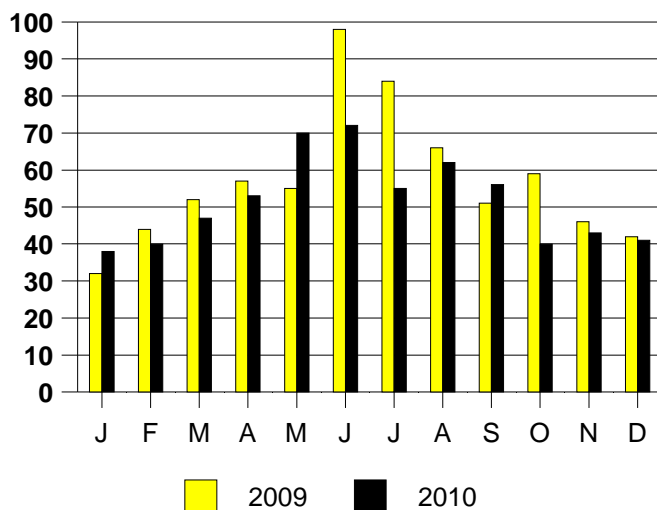
SALE/LIST PRICE RATIO

0K-100K	94.2%
101K-150K	97.0%
151K-200K	96.8%
201K-300K	97.2%
301K-500K	97.0%
501K-750K	96.4%
751K+	96.1%

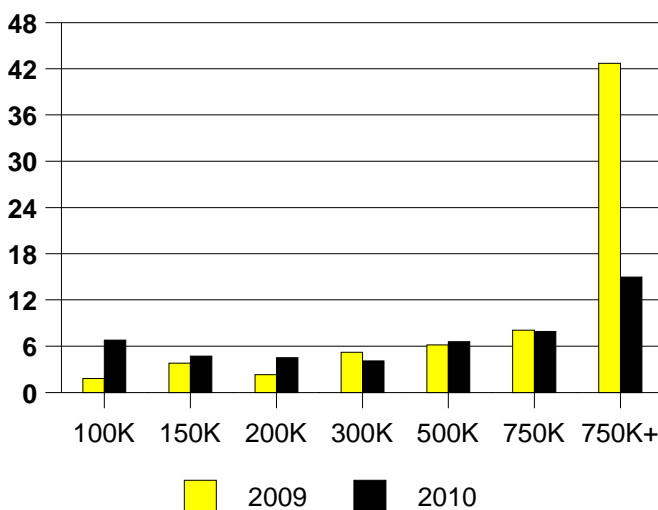
AVERAGE OVERPRICING
Original List Price to Sale Price

2009	7.5%
2010	6.8%

KELLER MONTHLY SALES



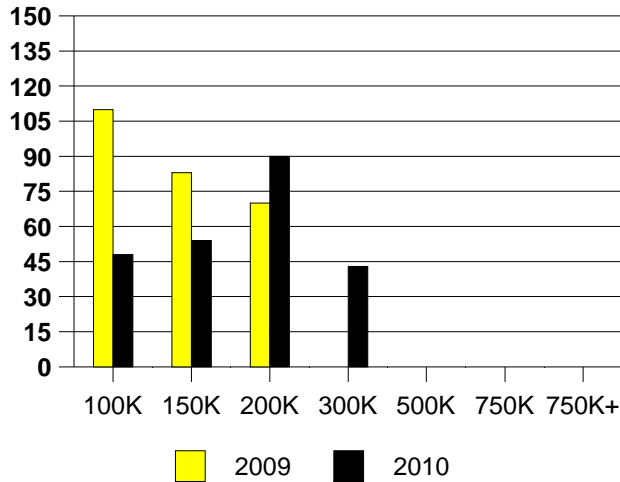
Inventory not shown where no sales
KELLER MONTHS OF INVENTORY



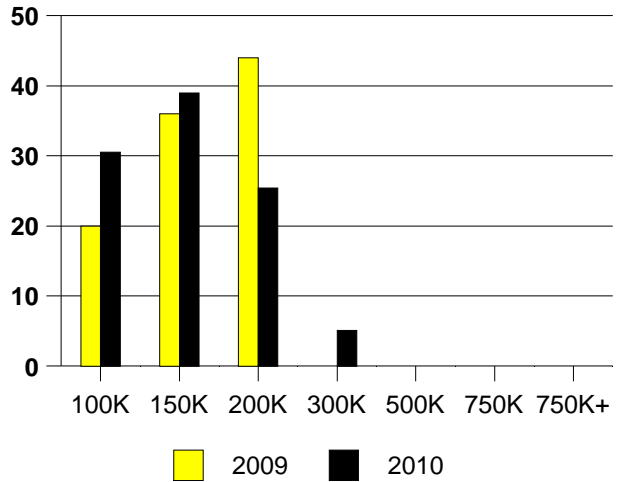
NTREIS Sold informaton as of 01/03/2011

	<u>2009</u>	<u>2010</u>
Total Sold Volume	\$ 10,111,161	\$ 7,461,405
Number of Sales	75	59
Median Sale Price	\$ 140,000	\$ 134,900

LAKE DALLAS DAYS ON THE MARKET



LAKE DALLAS MKT SHARE BY PRICE RANGE



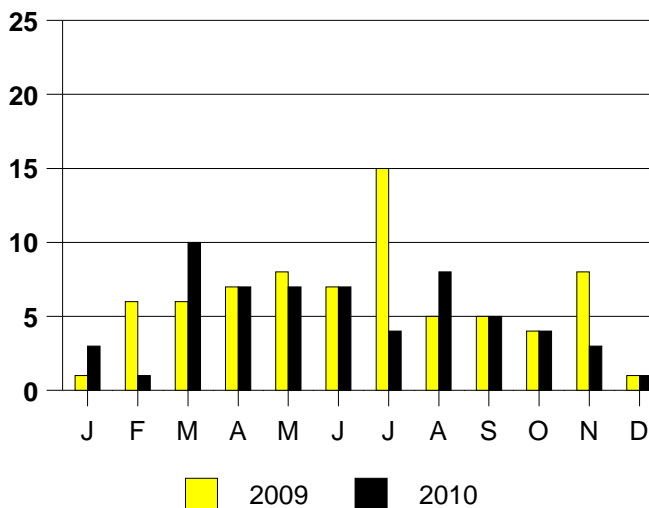
SALE/LIST PRICE RATIO

0K-100K	100.3%
101K-150K	97.3%
151K-200K	98.2%
201K-300K	98.4%
301K-500K	NONE
501K-750K	NONE
751K+	NONE

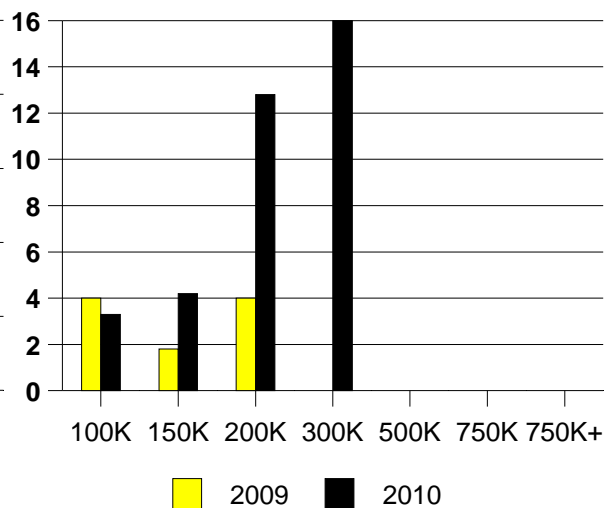
AVERAGE OVERPRICING
Original List Price to Sale Price

2009	5.8%
2010	5.3%

LAKE DALLAS MONTHLY SALES



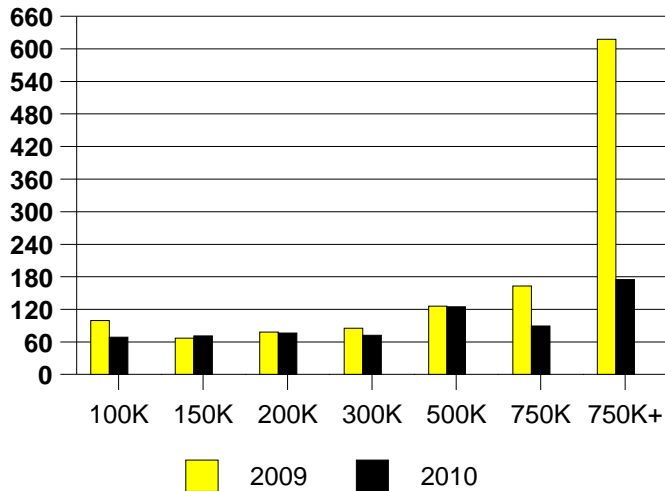
LAKE DALLAS MONTHS OF INVENTORY



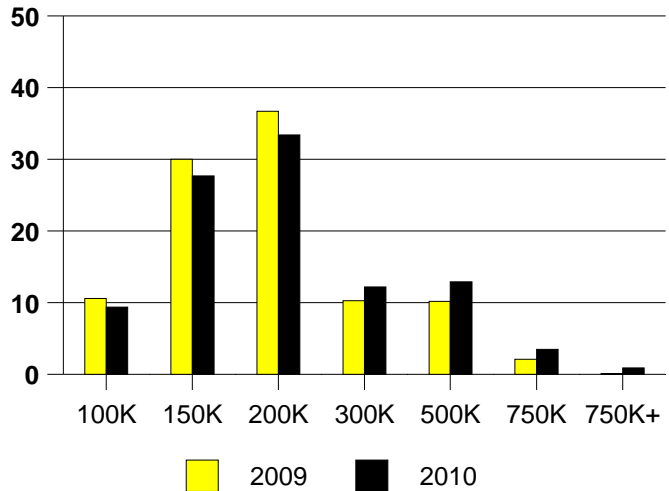
NTREIS Sold informaton as of 01/03/2011

	<u>2009</u>	<u>2010</u>
Total Sold Volume	\$ 190,109,696	\$ 182,187,712
Number of Sales	1009	862
Median Sale Price	\$ 161,500	\$ 168,000

DAYS ON THE MARKET (LEWISVILLE)



LEWISVILLE MKT SHARE BY PRICE RANGE



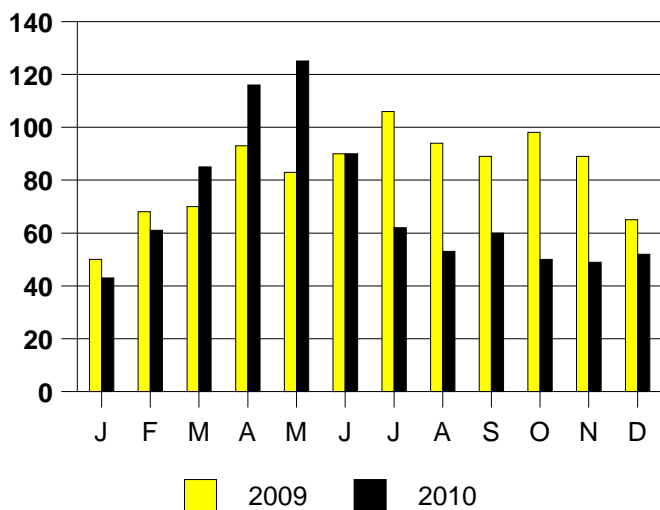
SALE/LIST PRICE RATIO

0K-100K	96.2%
101K-150K	98.0%
151K-200K	97.8%
201K-300K	96.6%
301K-500K	96.1%
501K-750K	96.4%
751K+	98.3%

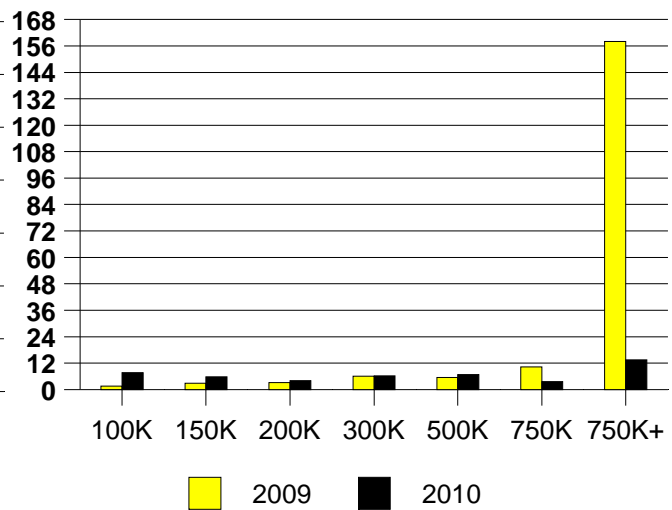
AVERAGE OVERPRICING
Original List Price to Sale Price

2009	5.9%
2010	6.5%

LEWISVILLE MONTHLY SALES



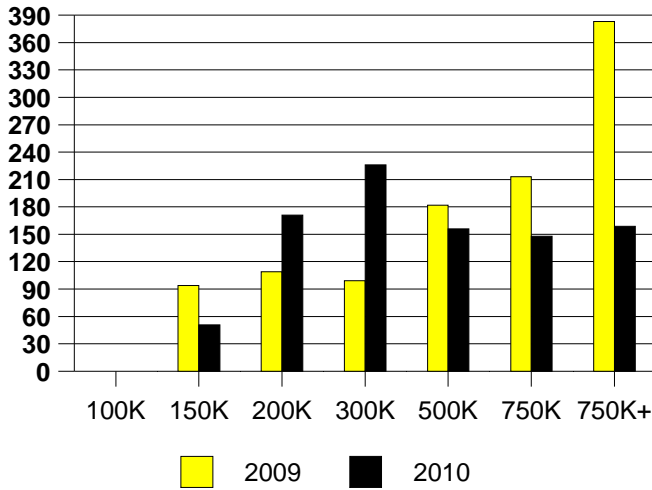
LEWISVILLE MONTHS OF INVENTORY



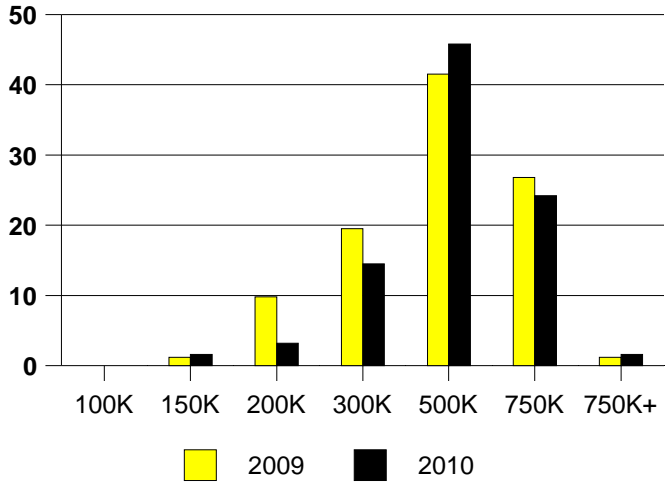
NTREIS Sold informaton as of 01/03/2011

	2009	2010
Total Sold Volume	\$ 33,280,506	\$ 26,476,790
Number of Sales	82	62
Median Sale Price	\$ 401,250	\$ 426,000

DAYS ON THE MARKET (LUCAS)



LUCAS MKT SHARE BY PRICE RANGE



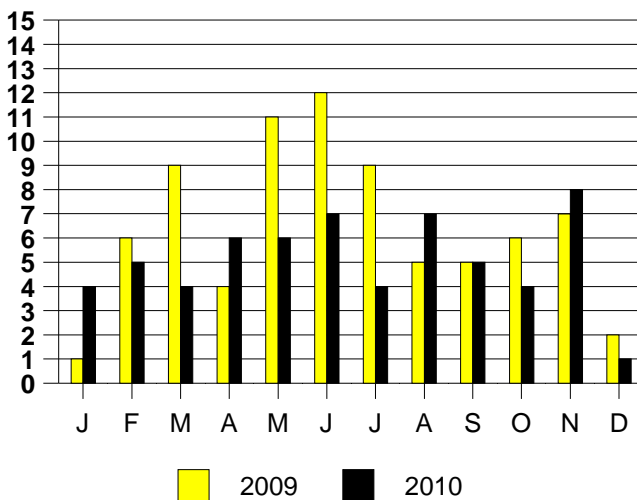
SALE/LIST PRICE RATIO

0K-100K	NONE
101K-150K	95.3%
151K-200K	100.1%
201K-300K	94.9%
301K-500K	94.9%
501K-750K	98.4%
751K+	95.6%

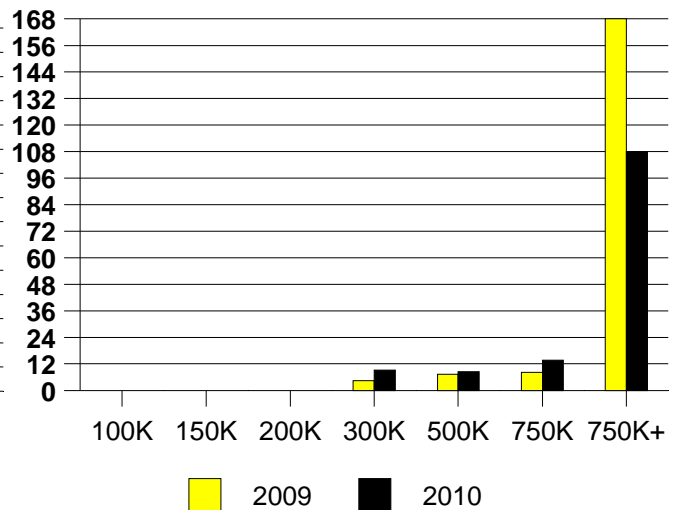
AVERAGE OVERPRICING
Original List Price to Sale Price

2009	10.2%
2010	10.3%

LUCAS MONTHLY SALES

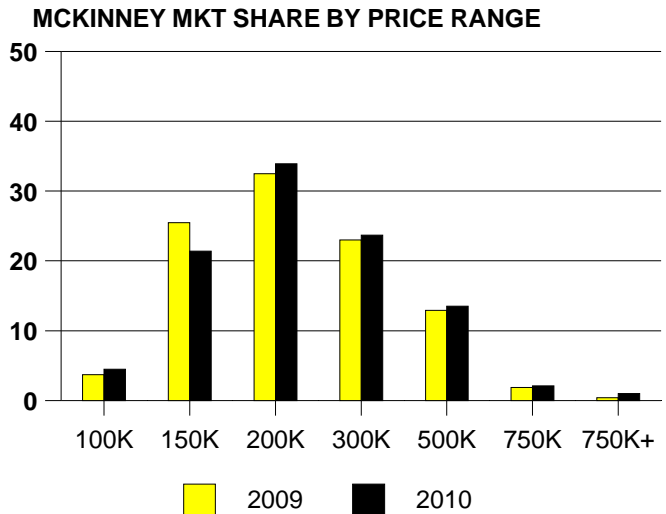
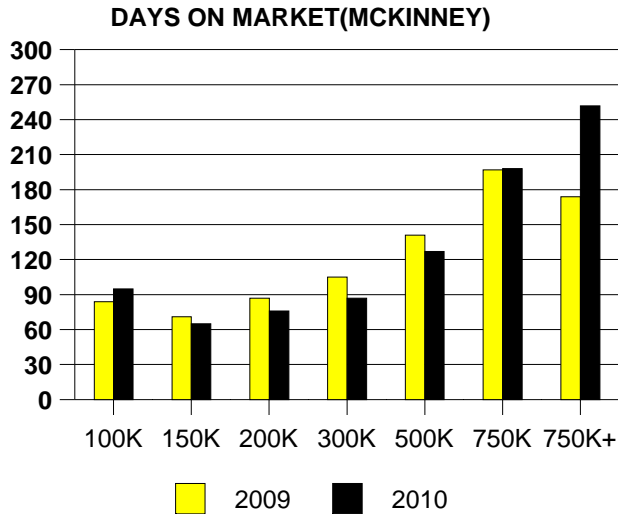


Inventory not shown where no sales
LUCAS MONTHS OF INVENTORY



NTREIS Sold informaton as of 01/03/2011

	<u>2009</u>	<u>2010</u>
Total Sold Volume	\$ 516,096,384	\$ 473,494,080
Number of Sales	2437	2145
Median Sale Price	\$ 176,000	\$ 181,500



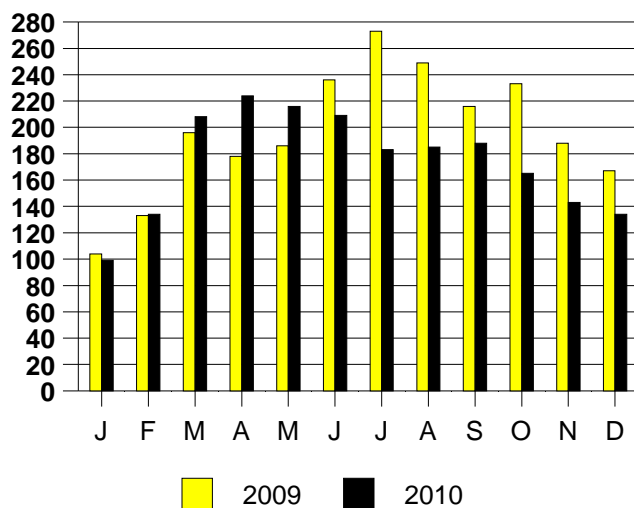
SALE/LIST PRICE RATIO

0K-100K	93.5%
101K-150K	97.5%
151K-200K	97.6%
201K-300K	96.7%
301K-500K	96.3%
501K-750K	94.8%
751K+	93.6%

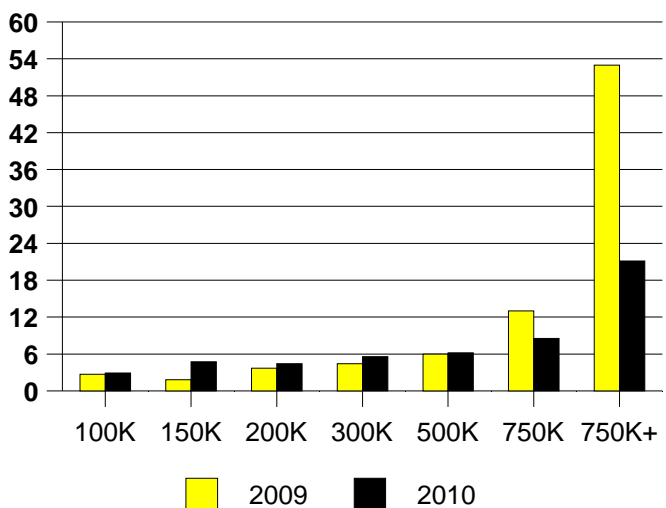
AVERAGE OVERPRICING
Original List Price to Sale Price

2009	6.8%
2010	7.1%

MCKINNEY MONTHLY SALES



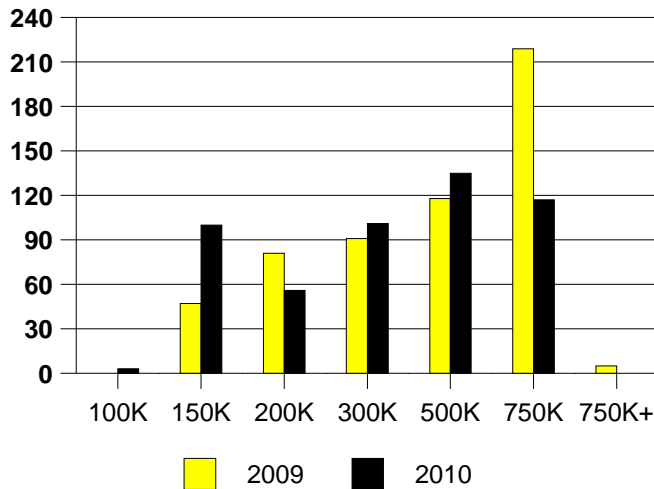
Inventory not shown where no sales
MCKINNEY MONTHS OF INVENTORY



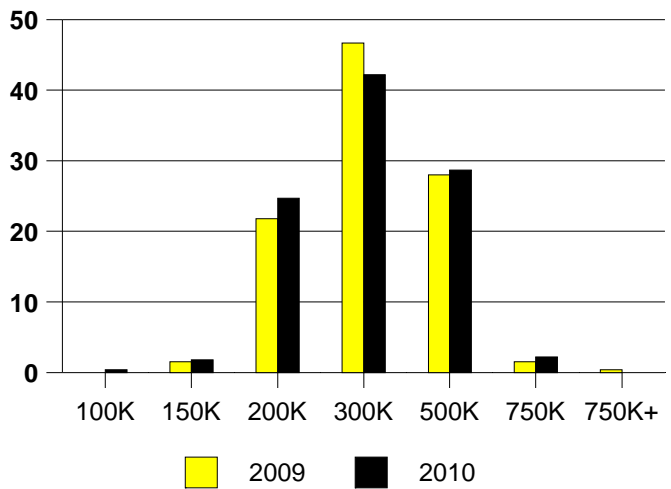
NTREIS Sold informaton as of 01/03/2011

	<u>2009</u>	<u>2010</u>
Total Sold Volume	\$69,996,832	\$ 60,343,788
Number of Sales	261	223
Median Sale Price	\$ 254,000	\$ 260,000

DAYS ON THE MARKET (MURPHY)



MURPHY MKT SHARE BY PRICE RANGE



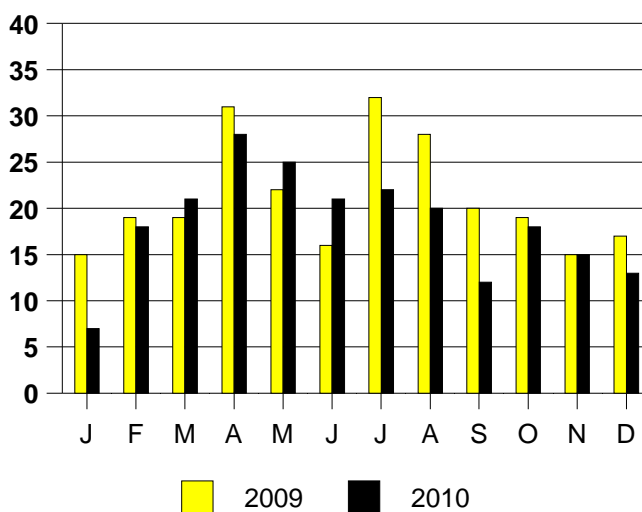
SALE/LIST PRICE RATIO

0K-100K	93.3%
101K-150K	104.5%
151K-200K	96.7%
201K-300K	96.4%
301K-500K	96.2%
501K-750K	96.7%
751K+	NONE

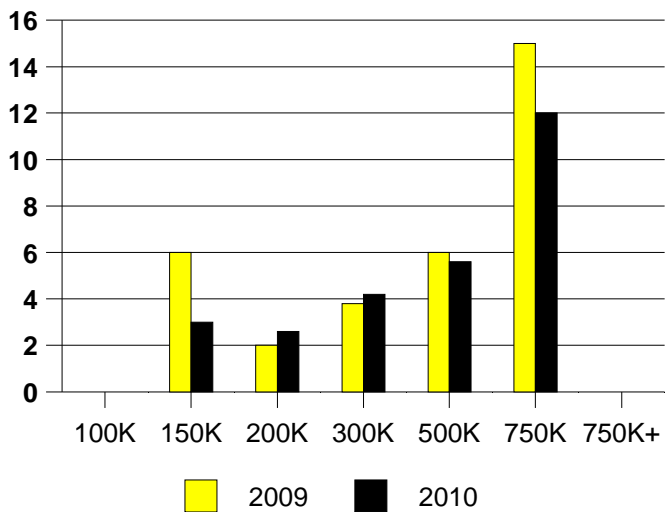
AVERAGE OVERPRICING
Original List Price to Sale Price

2009	8.7%
2010	6.9%

MURPHY MONTHLY SALES



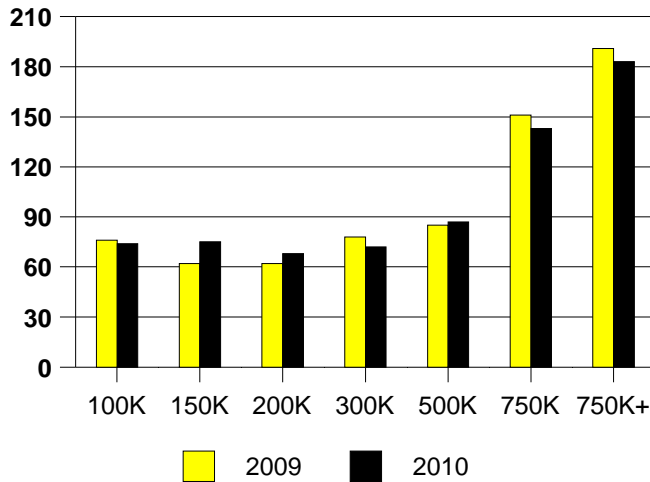
Inventory not shown where no sales
MURPHY MONTHS OF INVENTORY



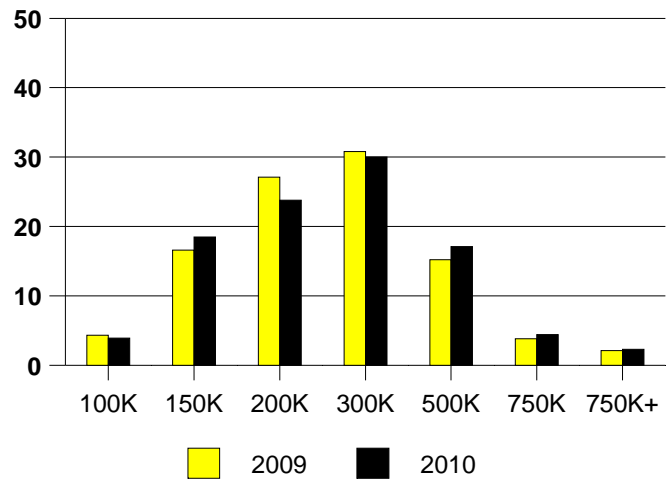
NTREIS Sold informaton as of 01/03/2011

	<u>2009</u>	<u>2010</u>
Total Sold Volume	\$ 711,696,448	\$ 636,180,992
Number of Sales	2862	2463
Median Sale Price	\$ 206,000	\$ 211,900

DAYS ON MARKET(PLANO)



PLANO MKT SHARE BY PRICE RANGE



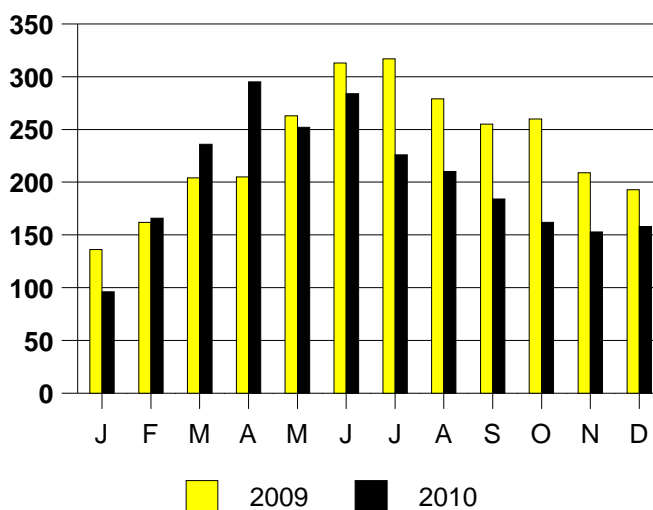
SALE/LIST PRICE RATIO

0K-100K	96.2%
101K-150K	97.6%
151K-200K	97.6%
201K-300K	97.0%
301K-500K	96.6%
501K-750K	96.3%
751K+	95.3%

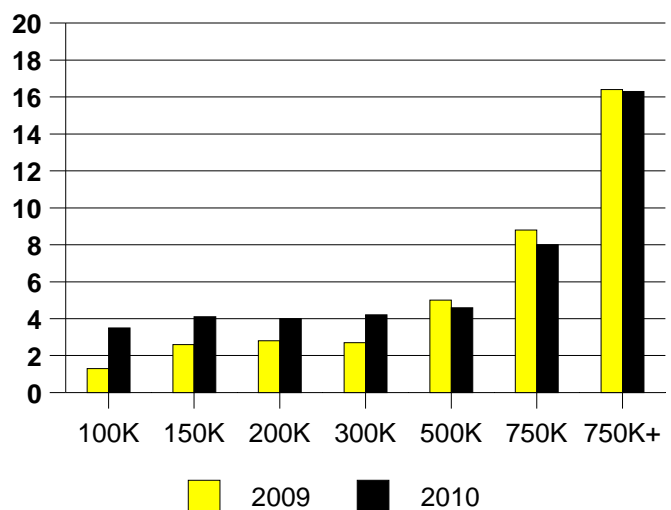
AVERAGE OVERPRICING
Original List Price to Sale Price

2009	6.4%
2010	6.3%

PLANO MONTHLY SALES



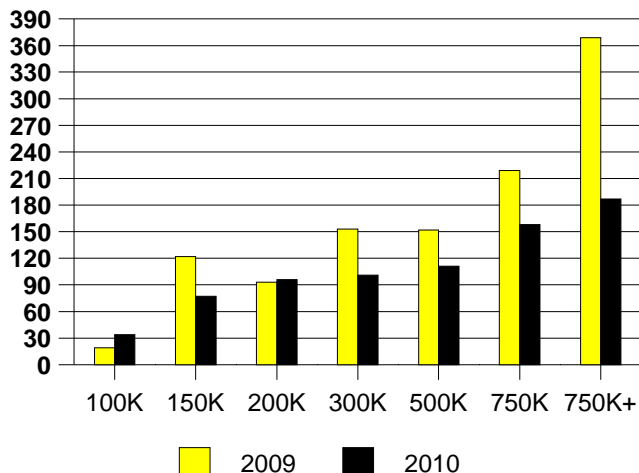
Inventory not shown where no sales
PLANO MONTHS OF INVENTORY



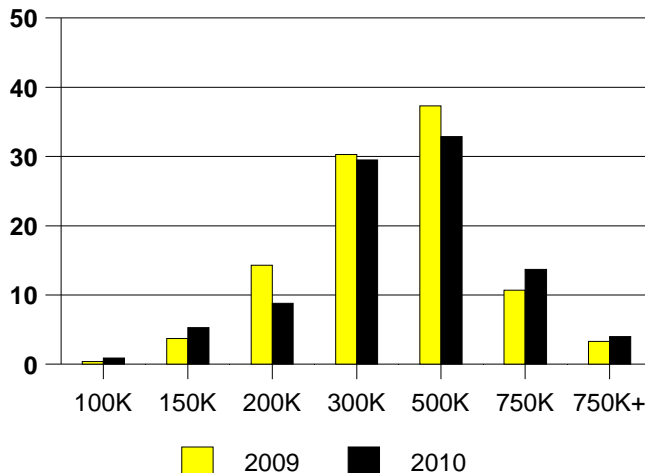
NTREIS Sold informaton as of 01/03/2011

	2009	2010
Total Sold Volume	\$ 84,511,480	\$ 82,089,688
Number of Sales	244	227
Median Sale Price	\$ 305,000	\$ 325,000

PROSPER DAYS ON THE MARKET



PROSPER MARKET SHARE BY PRICE RANGE



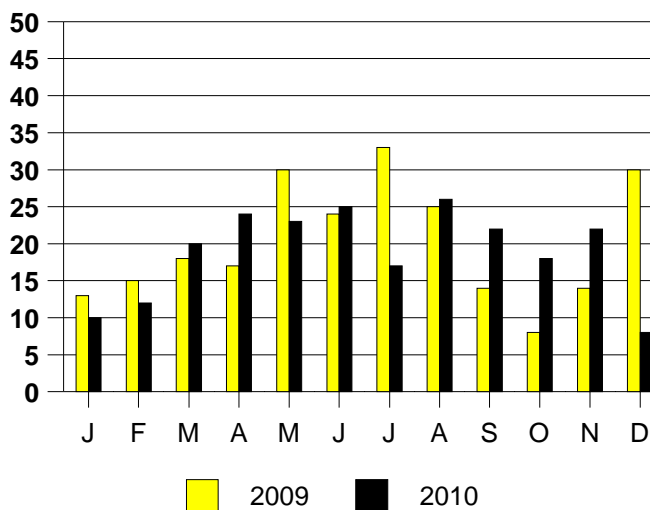
SALE/LIST PRICE RATIO

0K-100K	95.1%
101K-150K	98.2%
151K-200K	97.7%
201K-300K	96.8%
301K-500K	96.2%
501K-750K	95.9%
751K+	102.3%

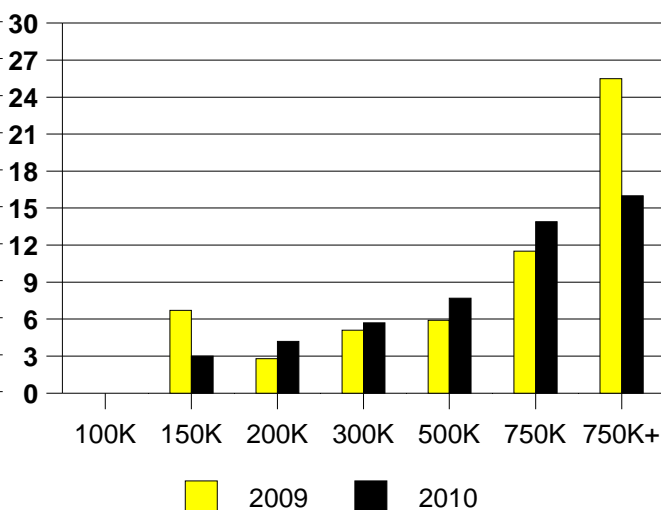
AVERAGE OVERPRICING
Original List Price to Sale Price

2009	8.8%
2010	7.2%

PROSPER MONTHLY SALES



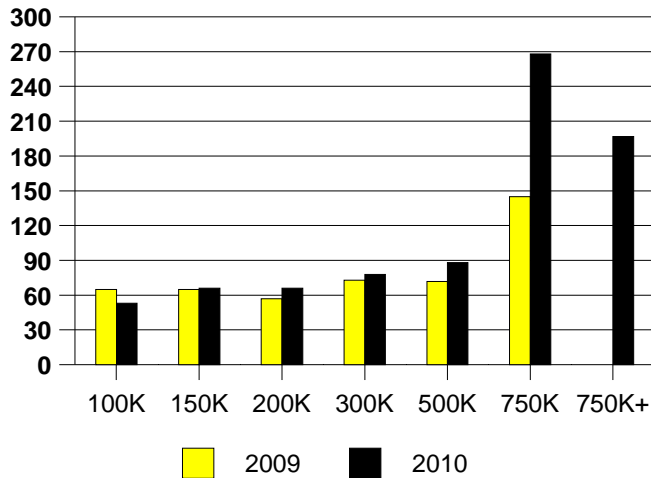
Inventory not shown where no sales
PROSPER MONTHS OF INVENTORY



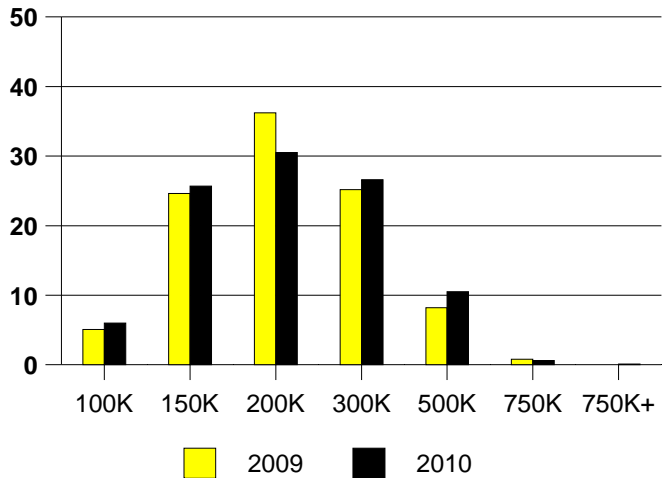
NTREIS Sold informaton as of 01/03/2011

	<u>2009</u>	<u>2010</u>
Total Sold Volume	\$ 179,528,304	\$ 165,492,000
Number of Sales	926	837
Median Sale Price	\$ 175,000	\$ 175,700

DAYS ON MARKET(RICHARDSON)



RICHARDSON MKT SHARE BY PRICE RANGE



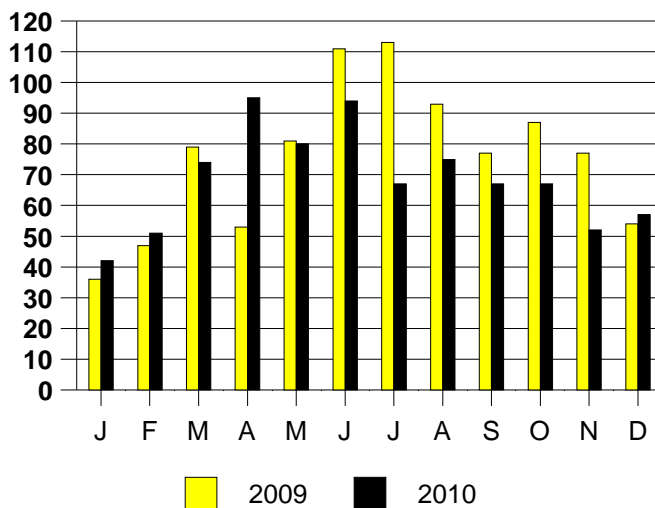
SALE/LIST PRICE RATIO

0K-100K	92.5%
101K-150K	97.1%
151K-200K	97.3%
201K-300K	97.0%
301K-500K	96.5%
501K-750K	95.8%
751K+	100.0%

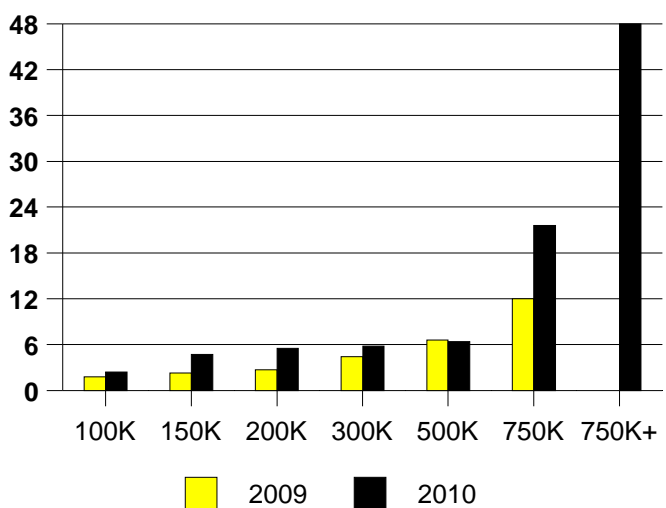
AVERAGE OVERPRICING
Original List Price to Sale Price

2009	5.7%
2010	8.1%

RICHARDSON MONTHLY SALES



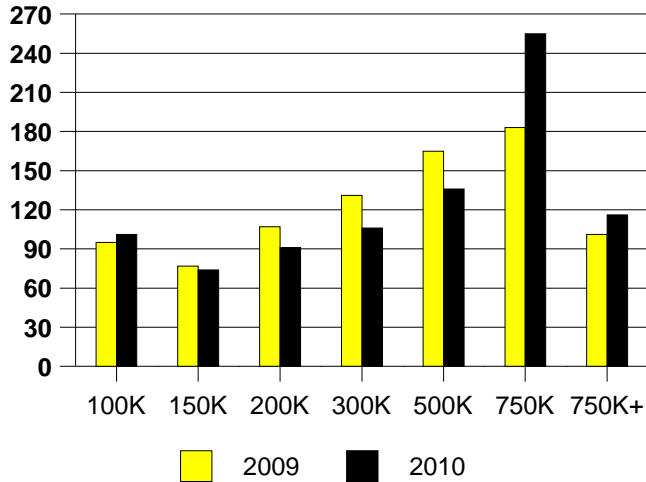
RICHARDSON MONTHS OF INVENTORY



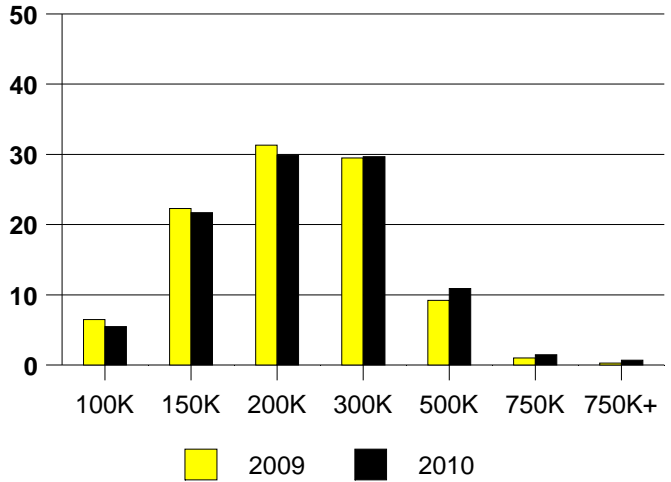
NTREIS Sold informaton as of 01/03/2011

	2009	2010
Total Sold Volume	\$ 121,343,208	\$ 124,770,384
Number of Sales	601	585
Median Sale Price	\$ 181,500	\$ 187,000

DAYS ON THE MARKET (ROCKWALL)



ROCKWALL MKT SHARE BY PRICE RANGE



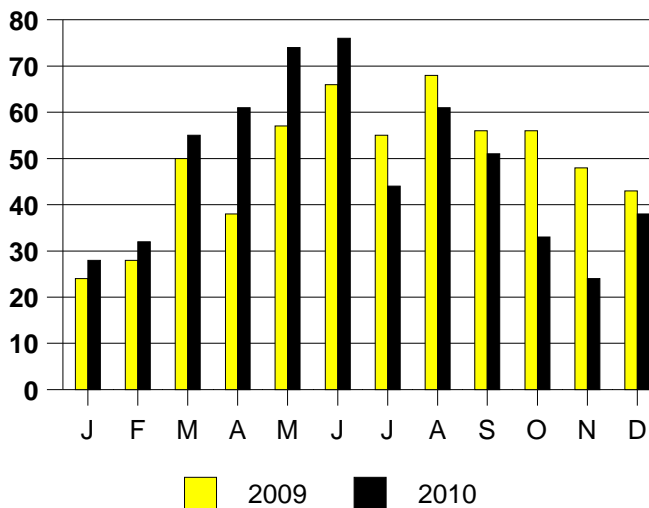
SALE/LIST PRICE RATIO

0K-100K	89.1%
101K-150K	96.2%
151K-200K	97.3%
201K-300K	95.7%
301K-500K	96.3%
501K-750K	95.3%
751K+	98.2%

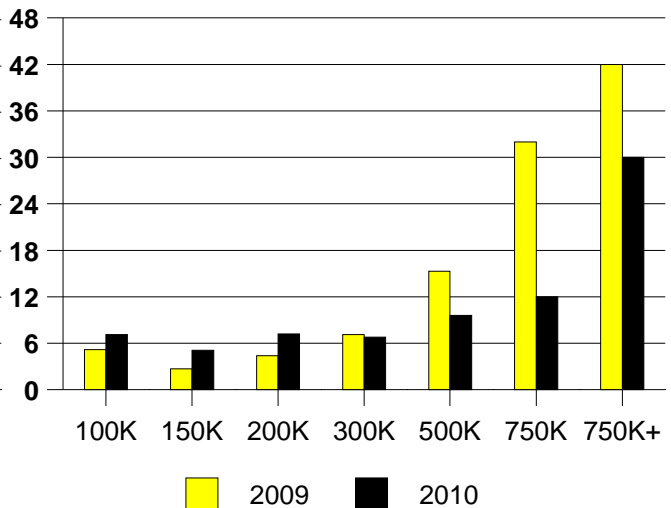
AVERAGE OVERPRICING
Original List Price to Sale Price

2009	8.0%
2010	8.9%

ROCKWALL MONTHLY SALES



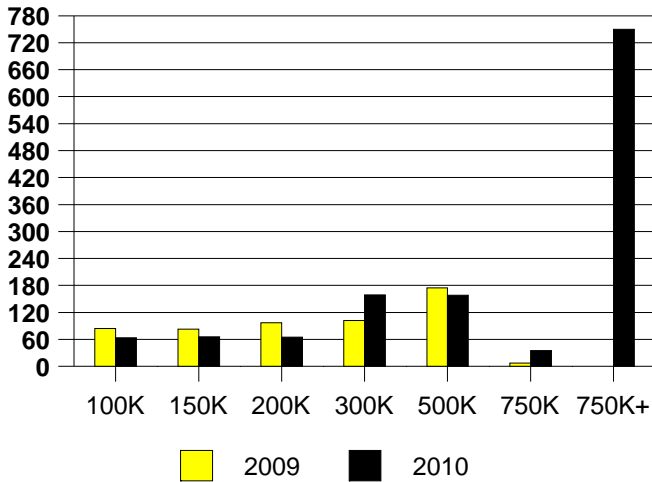
Inventory not shown where no sales
ROCKWALL MONTHS OF INVENTORY



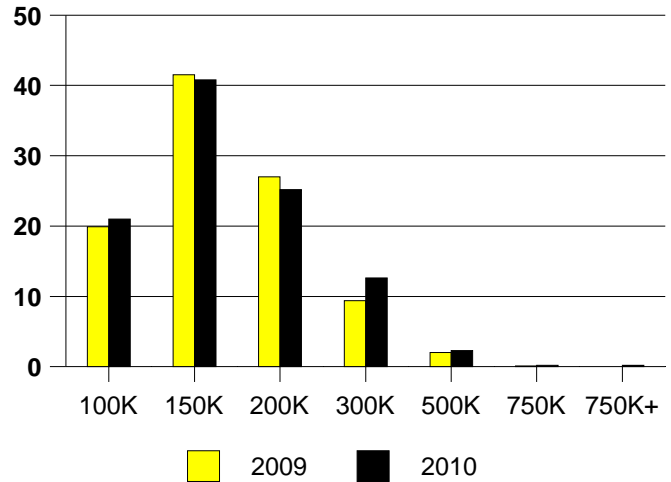
NTREIS Sold informaton as of 01/03/2011

	<u>2009</u>	<u>2010</u>
Total Sold Volume	\$ 108,504,728	\$ 94,798,800
Number of Sales	752	642
Median Sale Price	\$ 137,500	\$ 134,000

DAYS ON THE MARKET (ROWLETT)



ROWLETT MKT SHARE BY PRICE RANGE



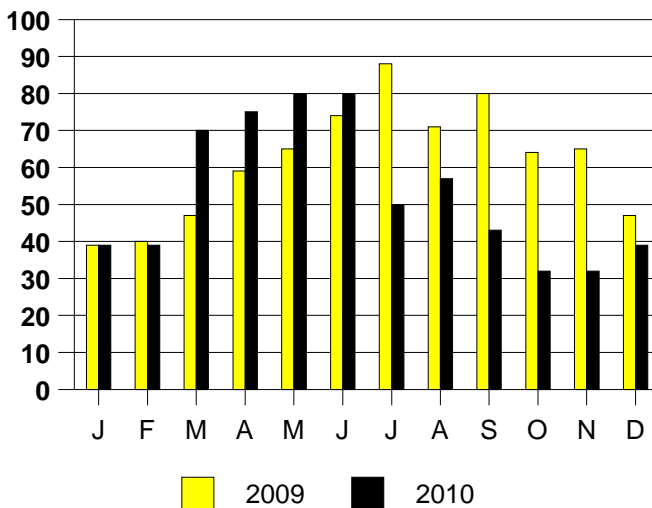
SALE/LIST PRICE RATIO

0K-100K	96.3%
101K-150K	98.1%
151K-200K	98.1%
201K-300K	96.2%
301K-500K	94.6%
501K-750K	81.5%
751K+	100.0%

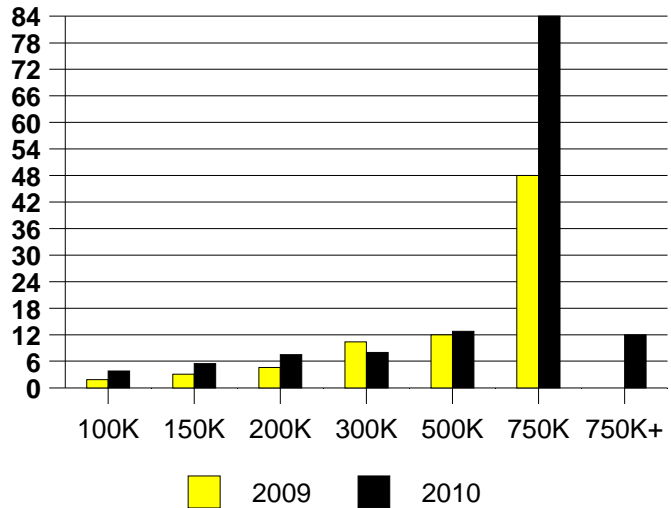
AVERAGE OVERPRICING
Original List Price to Sale Price

2009	7.0%
2010	7.4%

ROWLETT MONTHLY SALES



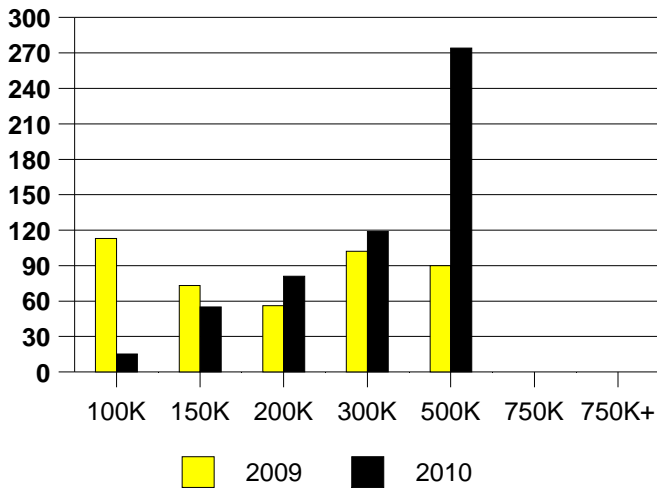
Inventory not shown where no sales
ROWLETT MONTHS OF INVENTORY



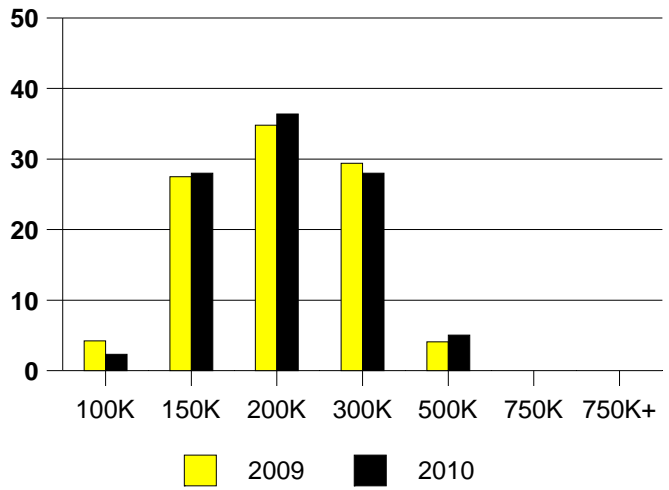
NTREIS Sold informaton as of 01/03/2011

	<u>2009</u>	<u>2010</u>
Total Sold Volume	\$ 58,560,056	\$ 49,380,068
Number of Sales	313	261
Median Sale Price	\$ 170,000	\$ 168,000

DAYS ON THE MARKET (SACHSE)



SACHSE MKT SHARE BY PRICE RANGE



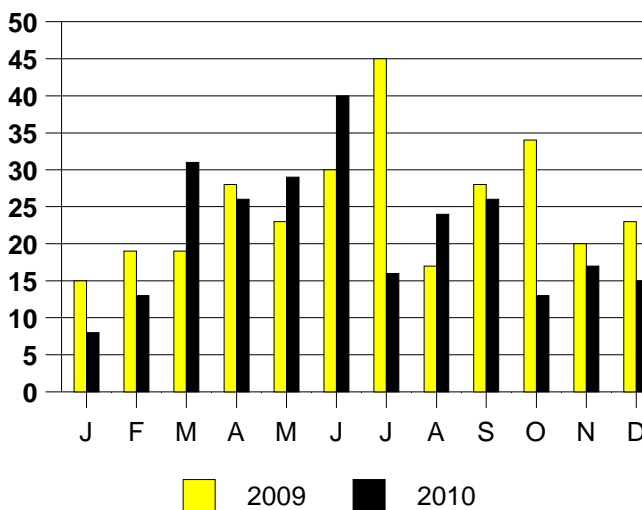
SALE/LIST PRICE RATIO

0K-100K	97.2%
101K-150K	97.9%
151K-200K	97.9%
201K-300K	94.4%
301K-500K	97.0%
501K-750K	NONE
751K+	NONE

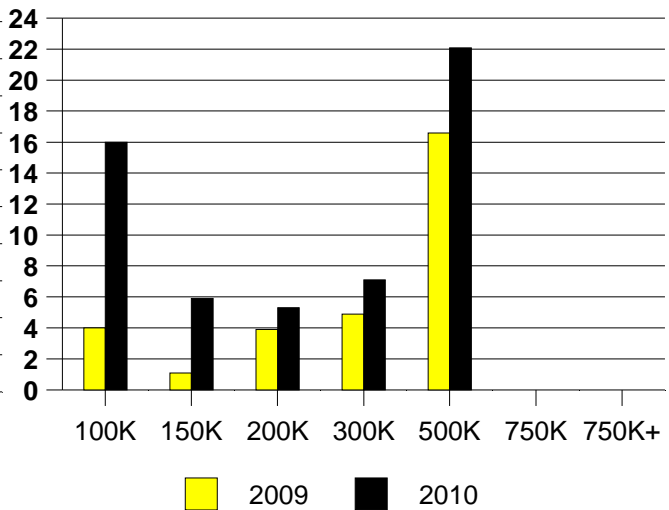
AVERAGE OVERPRICING
Original List Price to Sale Price

2009	6.5%
2010	6.8%

SACHSE MONTHLY SALES



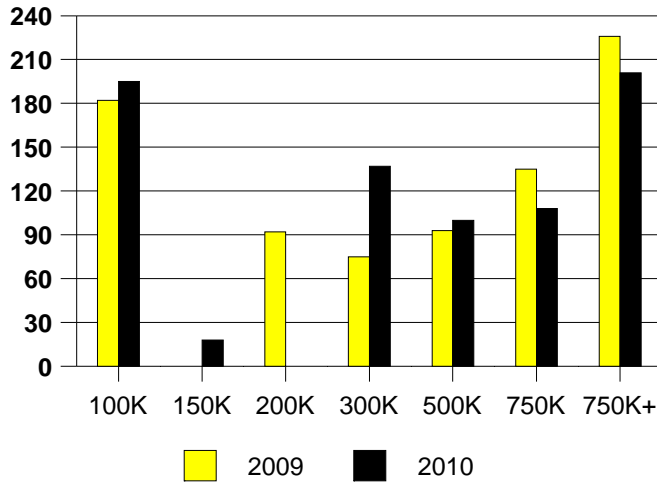
Inventory not shown where no sales
SACHSE MONTHS OF INVENTORY



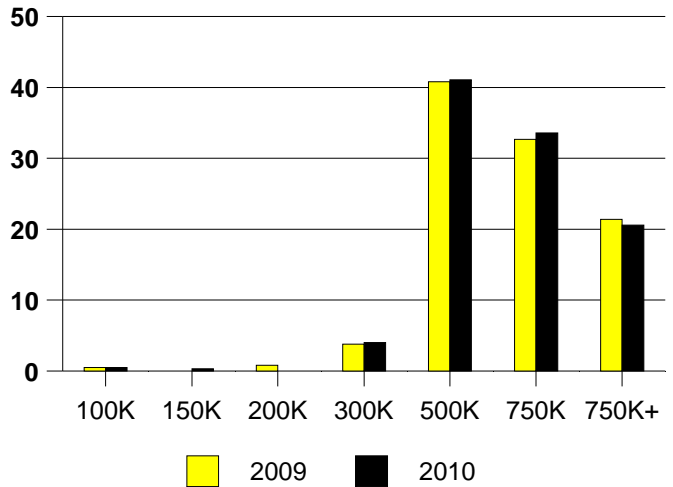
NTREIS Sold informaton as of 01/03/2011

	<u>2009</u>	<u>2010</u>
Total Sold Volume	\$ 228,918,880	\$ 248,537,888
Number of Sales	373	399
Median Sale Price	\$ 525,000	\$ 530,000

DAYS ON THE MARKET (SOUTHLAKE)



SOUTHLAKE MKT SHARE BY PRICE RANGE



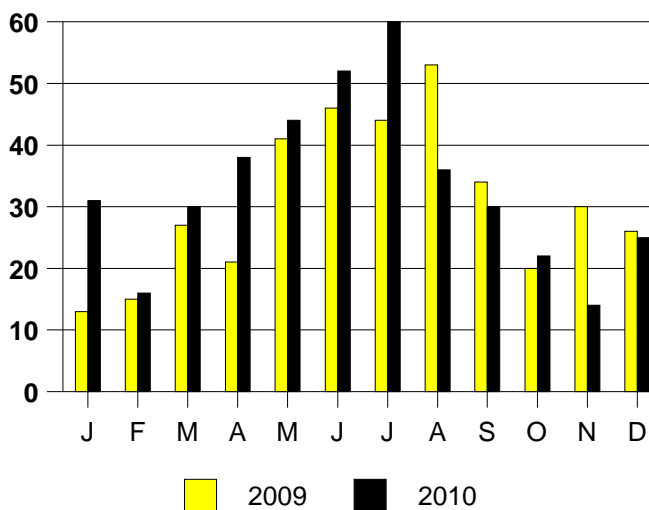
SALE/LIST PRICE RATIO

0K-100K	82.4%
101K-150K	96.9%
151K-200K	NONE
201K-300K	95.7%
301K-500K	96.4%
501K-750K	96.6%
751K+	96.0%

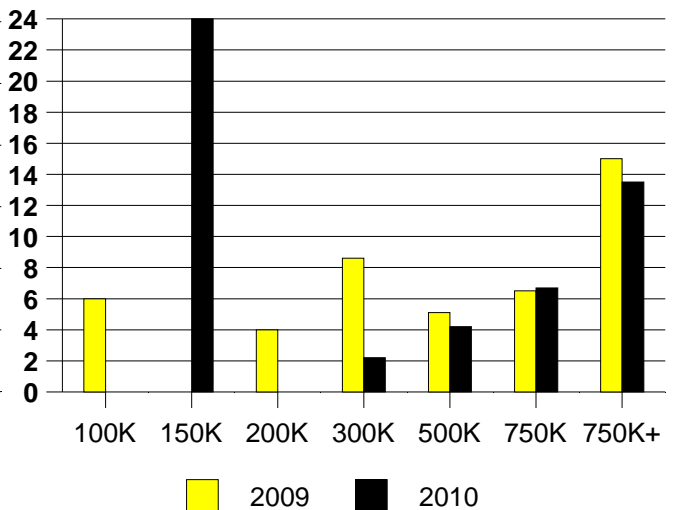
AVERAGE OVERPRICING
Original List Price to Sale Price

2009	8.7%
2010	8.0%

SOUTHLAKE MONTHLY SALES



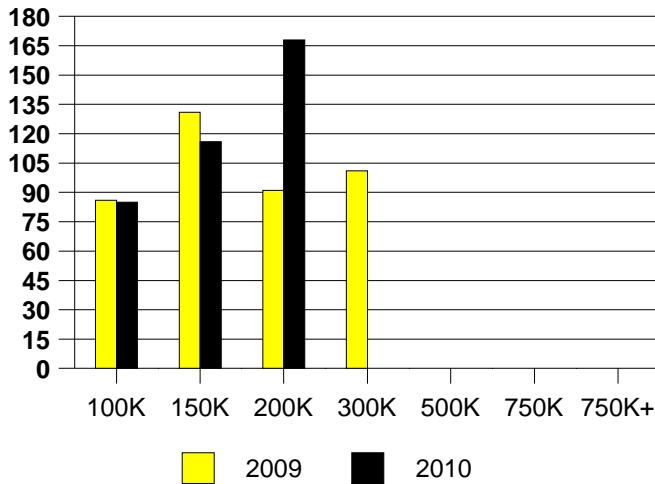
Inventory not shown where no sales
SOUTHLAKE MONTHS OF INVENTORY



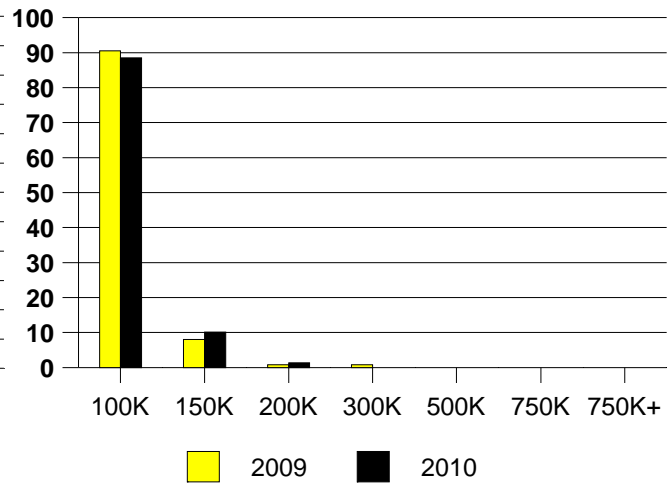
NTREIS Sold informaton as of 01/03/2011

	<u>2009</u>	<u>2010</u>
Total Sold Volume	\$30,647,648	\$ 28,393,016
Number of Sales	515	444
Median Sale Price	\$ 55,000	\$ 63,050

DAYS ON THE MARKET (OAK CLIFF)



OAK CLIFF MKT SHARE BY PRICE RANGE



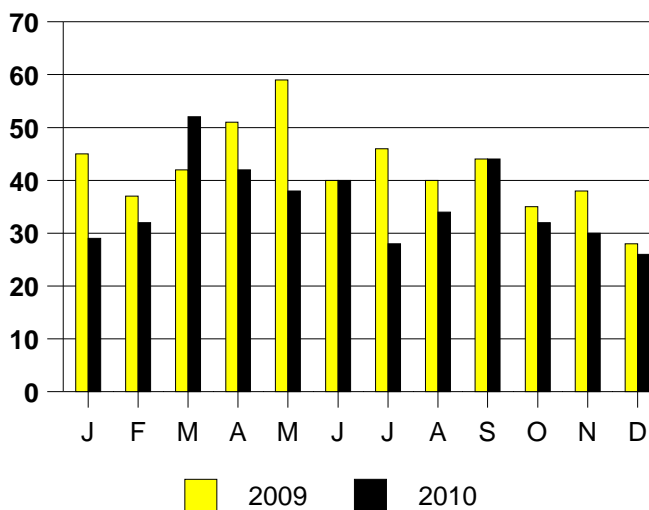
SALE/LIST PRICE RATIO

0K-100K	98.4%
101K-150K	96.3%
151K-200K	90.9%
201K-300K	NONE
301K-500K	NONE
501K-750K	NONE
751K+	NONE

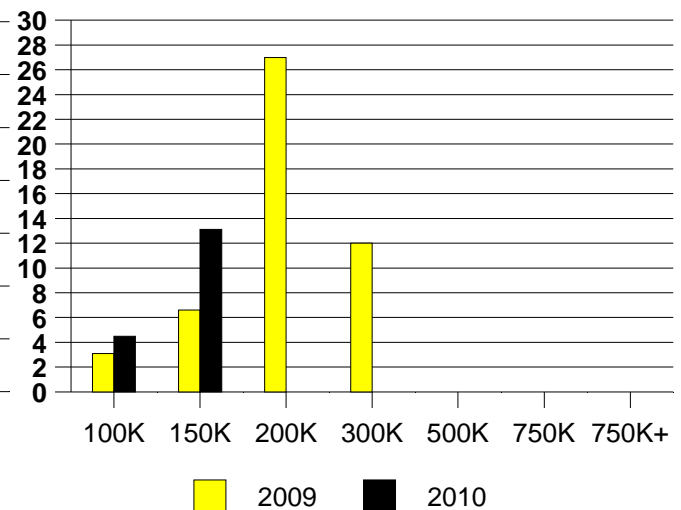
AVERAGE OVERPRICING
Original List Price to Sale Price

2009	16.4%
2010	13.4%

OAK CLIFF MONTHLY SALES



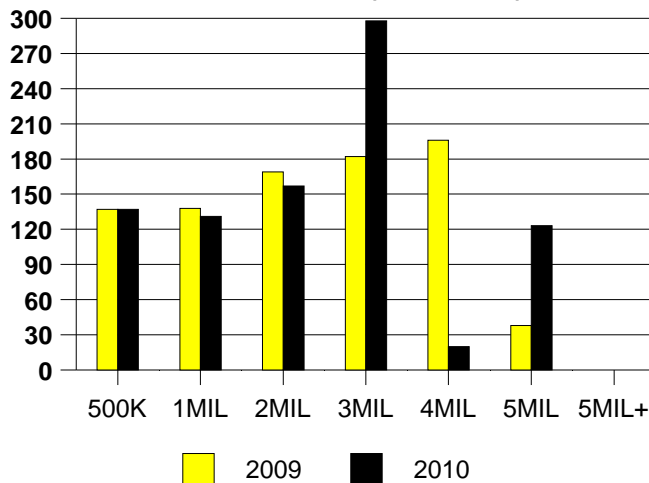
Inventory not shown where no sales
OAK CLIFF MONTHS OF INVENTORY



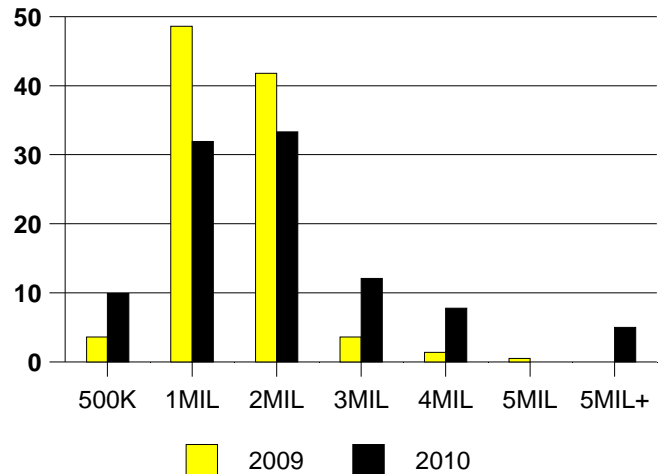
NTREIS Sold informaton as of 01/03/2011

	2009	2010
Total Sold Volume	\$ 253,827,856	\$ 334,347,712
Number of Sales	220	298
Median Sale Price	\$ 992,500	\$ 992,820

DAYS ON THE MARKET (UNIV PARK)



MKT SHARE BY PRICE RANGE(UP)



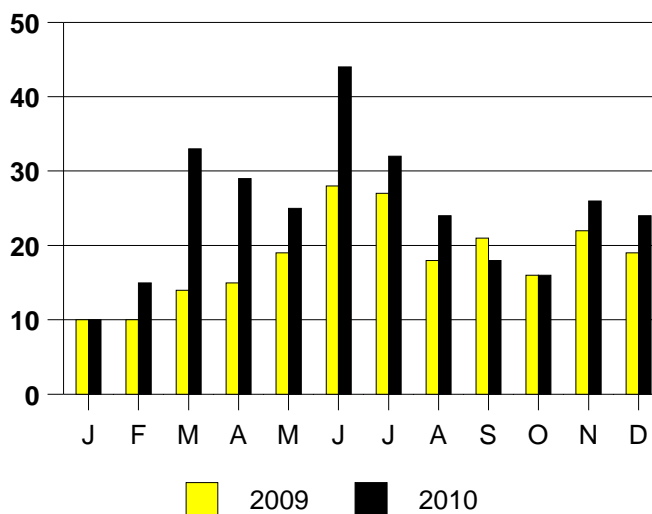
SALE/LIST PRICE RATIO

0K-500K	94.7%
501K-1MIL	95.0%
1MIL-2MIL	94.4%
2MIL-3MIL	97.2%
3MIL-4MIL	100.0%
4MIL-5MIL	96.2%
5MIL+	NONE

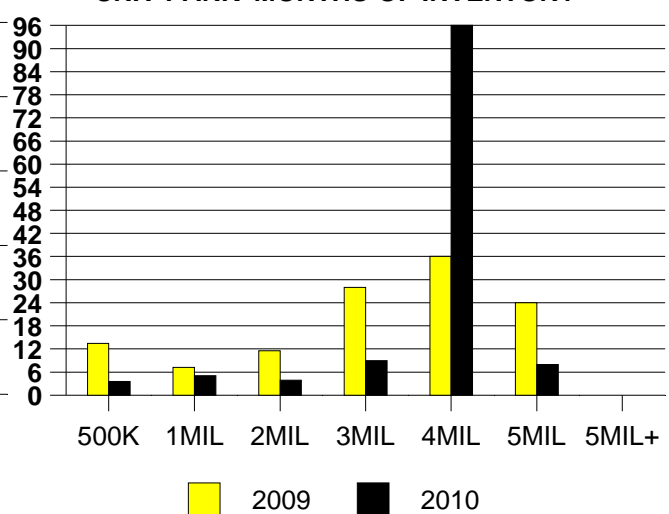
AVERAGE OVERPRICING

Orig List Price to Sale Price	
2009	15.7%
2010	11.9%

UNIVERSITY PARK MONTHLY SALES



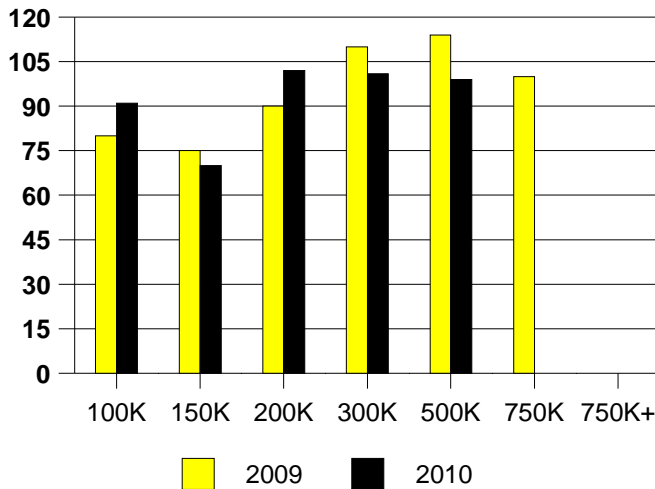
Inventory not shown where no sales
UNIV PARK MONTHS OF INVENTORY



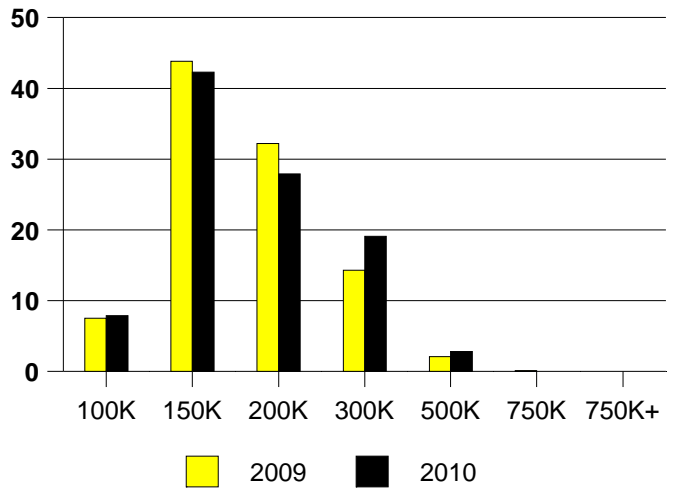
NTREIS Sold information as of 01/03/2011

	<u>2009</u>	<u>2010</u>
Total Sold Volume	\$ 108,103,656	\$ 93,483,280
Number of Sales	678	570
Median Sale Price	\$ 150,000	\$ 150,000

DAYS ON THE MARKET (WYLIE)



WYLIE MKT SHARE BY PRICE RANGE



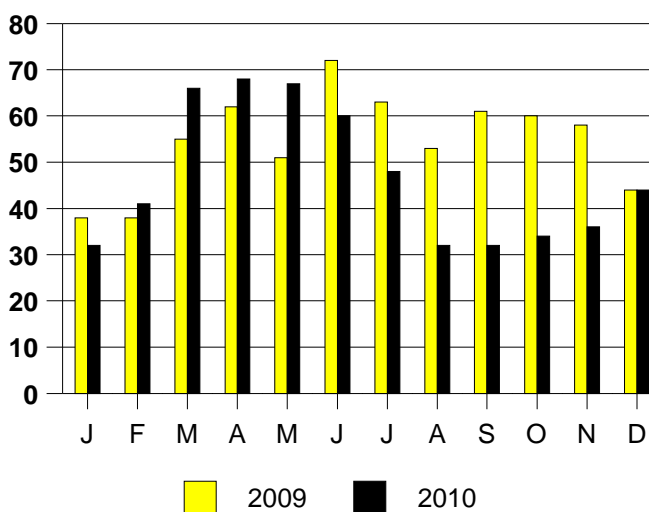
SALE/LIST PRICE RATIO

0K-100K	92.5%
101K-150K	97.8%
151K-200K	97.6%
201K-300K	96.2%
301K-500K	96.5%
501K-750K	NONE
751K+	NONE

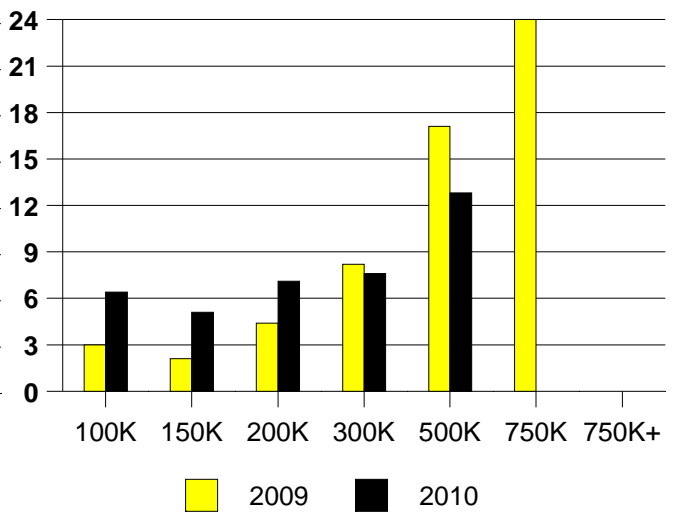
AVERAGE OVERPRICING
Original List Price to Sale Price

2009	7.0%
2010	7.2%

WYLIE MONTHLY SALES



Inventory not shown where no sales
WYLIE MONTHS OF INVENTORY



NTREIS Sold informaton as of 01/03/2011