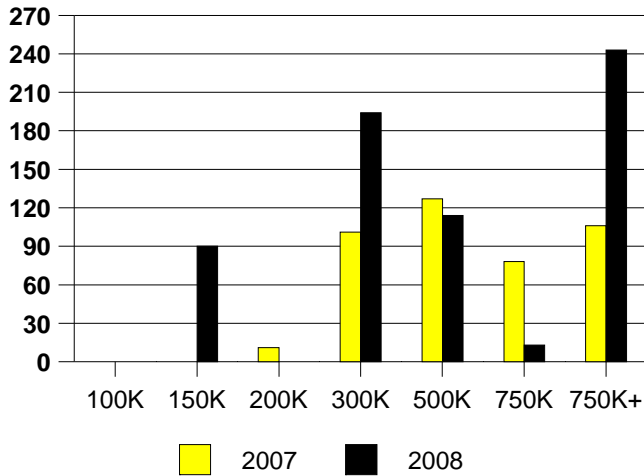
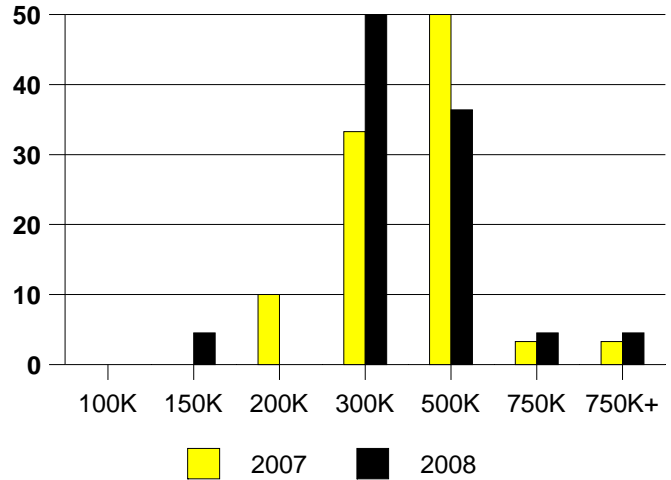


	<u>2007</u>	<u>2008</u>
Total Sold Volume	\$ 10,751,031	\$ 8,118,800
Number of Sales	30	22
Average Sales Price	\$ 358,367	\$ 369,036

DAYS ON THE MARKET (ADDISON)



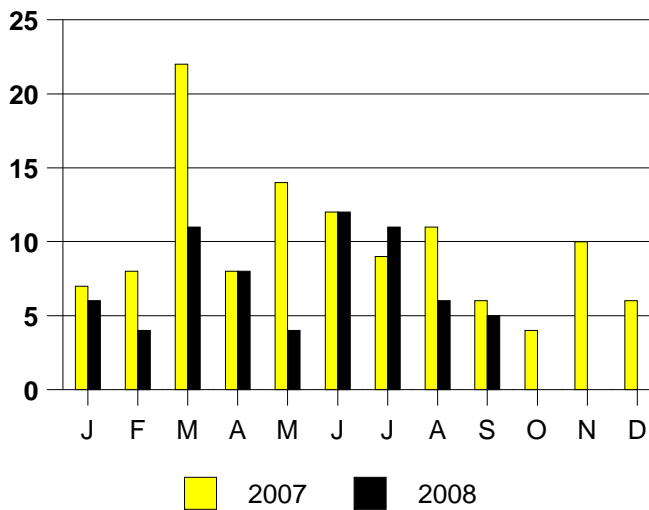
ADDISON MKT SHARE BY PRICE RANGE



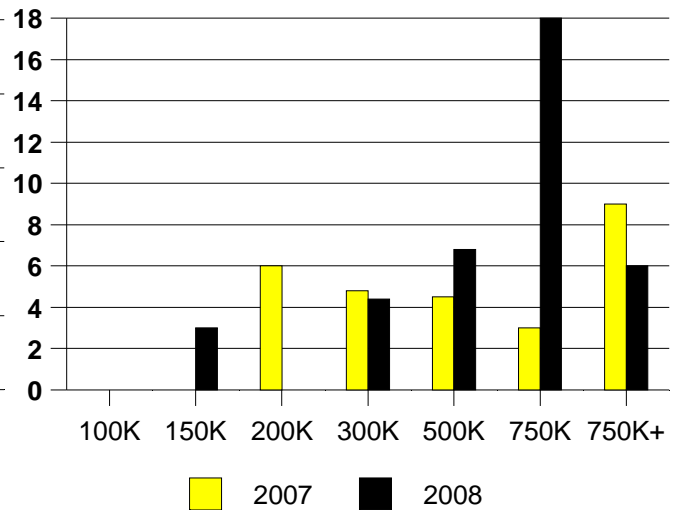
SALE/LIST PRICE RATIO

0K-100K	NONE
101K-150K	77.5%
151K-200K	NONE
201K-300K	97.7%
301K-500K	96.7%
501K-750K	98.3%
751K+	87.5%

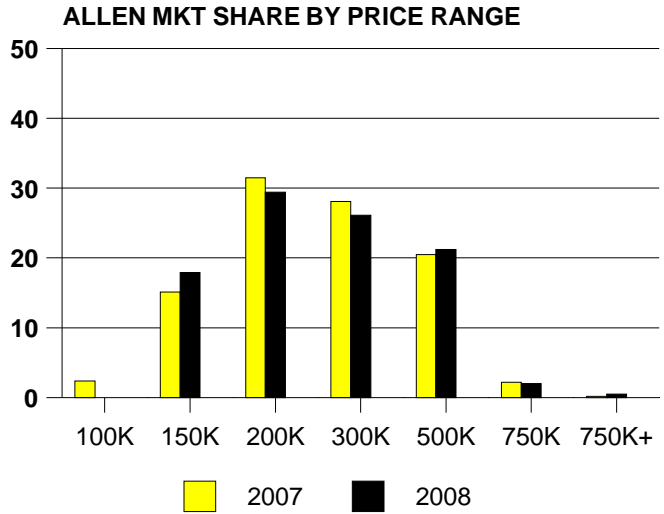
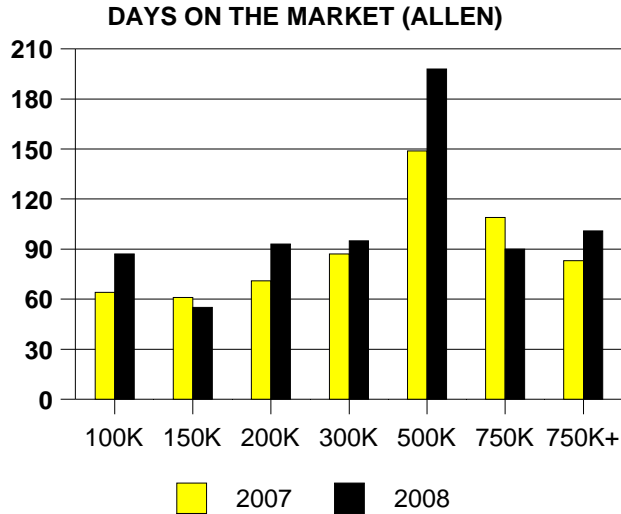
ADDISON MONTHLY SALES



ADDISON MONTHS OF INVENTORY

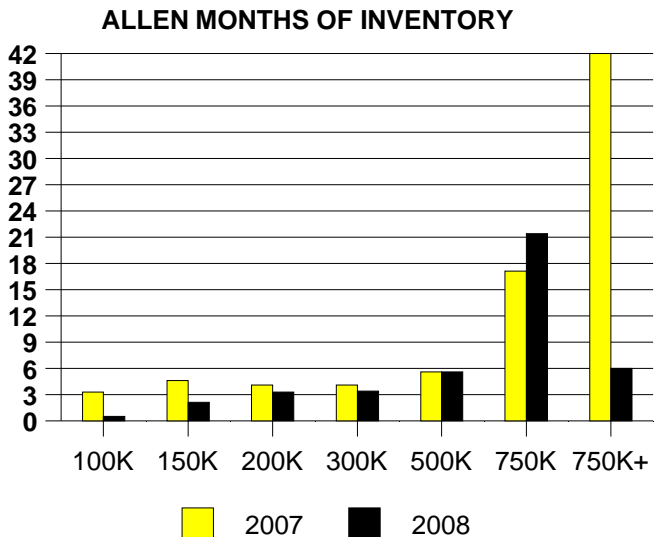
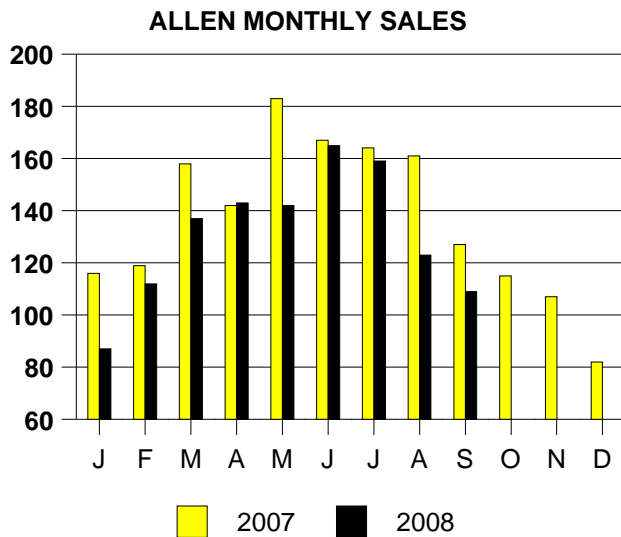


	2007	2008
Total Sold Volume	\$ 109,345,340	\$ 92,010,744
Number of Sales	463	391
Average Sales Price	\$ 236,167	\$ 235,321



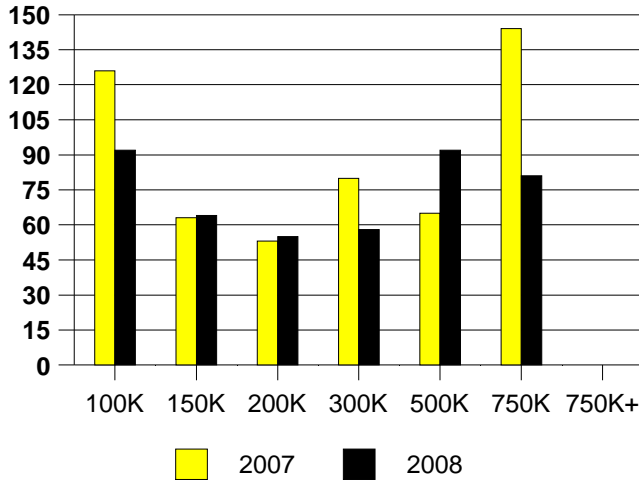
SALE/LIST PRICE RATIO

0K-100K	97.1%
101K-150K	98.6%
151K-200K	98.1%
201K-300K	97.0%
301K-500K	95.8%
501K-750K	97.0%
751K+	92.2%

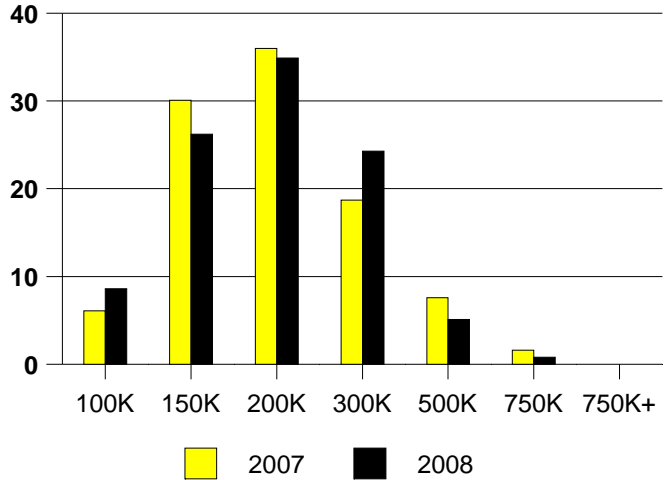


	<u>2007</u>	<u>2008</u>
Total Sold Volume	\$ 84,086,416	\$ 67,304,912
Number of Sales	445	370
Average Sales Price	\$ 188,958	\$ 181,905

DAYS ON MARKET(CARROLLTON)



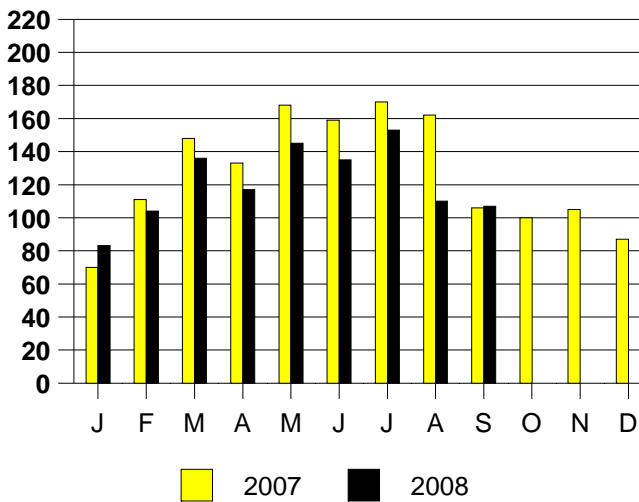
CARROLLTON MKT SHARE BY PRICE RANGE



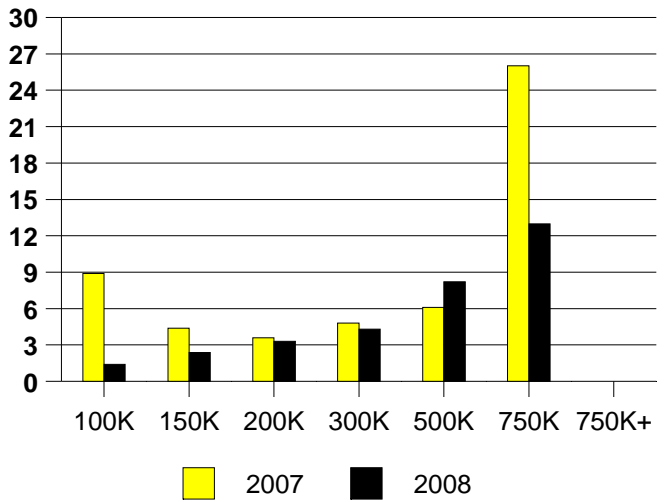
SALE/LIST PRICE RATIO

0K-100K	91.0%
101K-150K	98.6%
151K-200K	98.9%
201K-300K	97.3%
301K-500K	96.0%
501K-750K	90.1%
751K+	NONE

CARROLLTON MONTHLY SALES

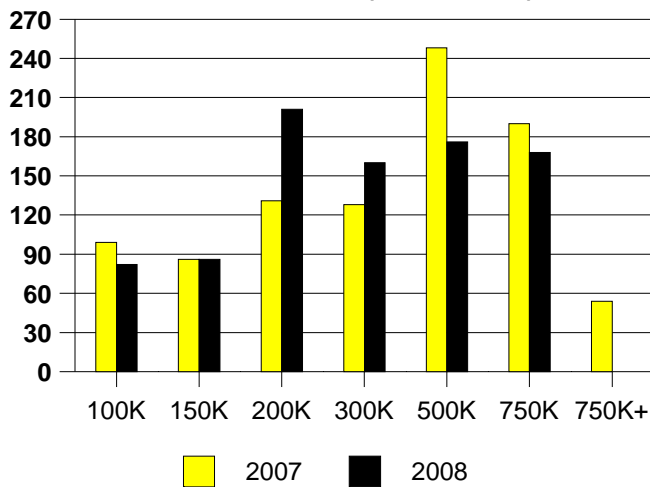


CARROLLTON MONTHS OF INVENTORY

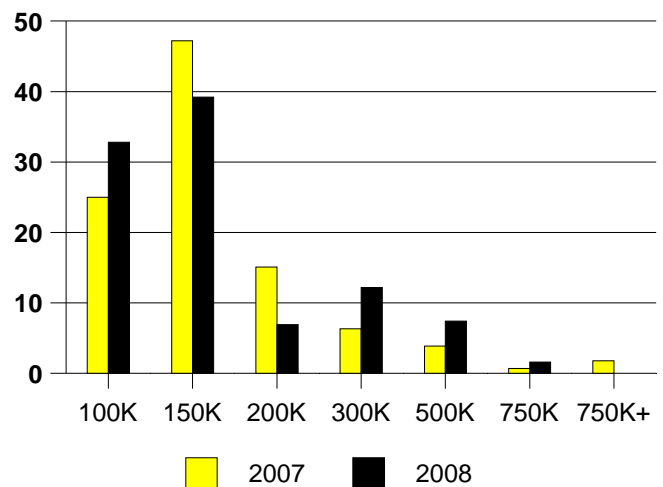


	<u>2007</u>	<u>2008</u>
Total Sold Volume	\$ 43,676,008	\$ 28,821,768
Number of Sales	284	189
Average Sales Price	\$ 153,788	\$ 152,496

DAYS ON THE MARKET (CEDAR HILL)



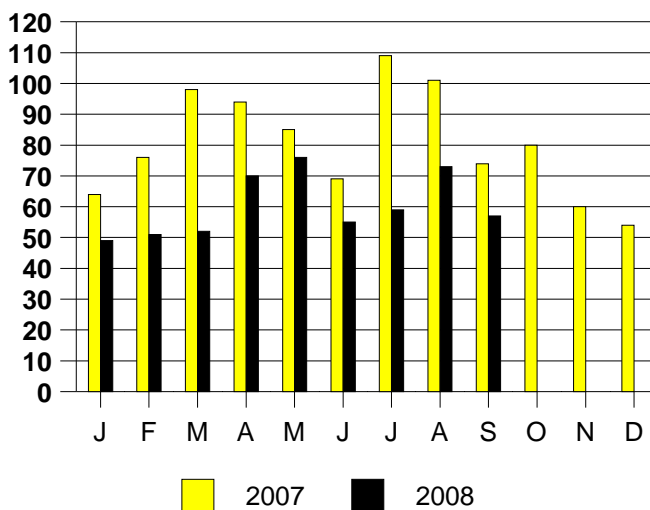
CEDAR HILL MKT SHARE BY PRICE RANGE



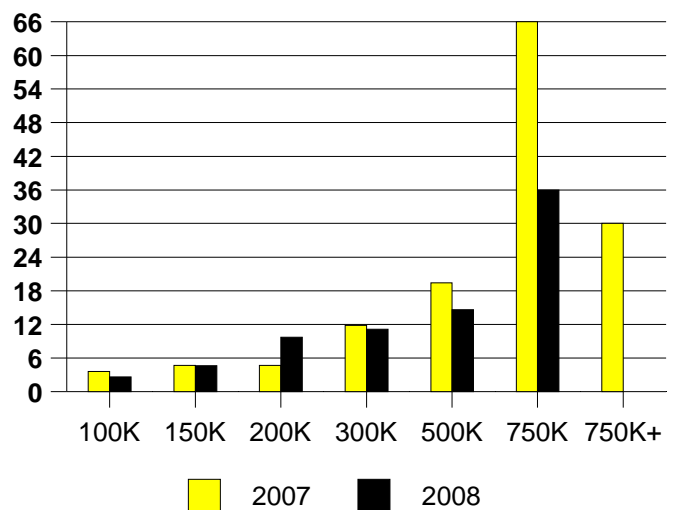
SALE/LIST PRICE RATIO

0K-100K	97.1%
101K-150K	100.1%
151K-200K	101.0%
201K-300K	99.2%
301K-500K	95.4%
501K-750K	89.5%
751K+	NONE

CEDAR HILL MONTHLY SALES

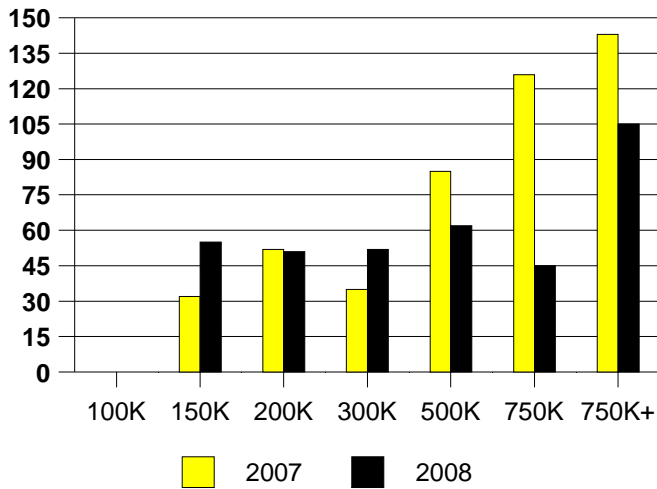


CEDAR HILL MONTHS OF INVENTORY

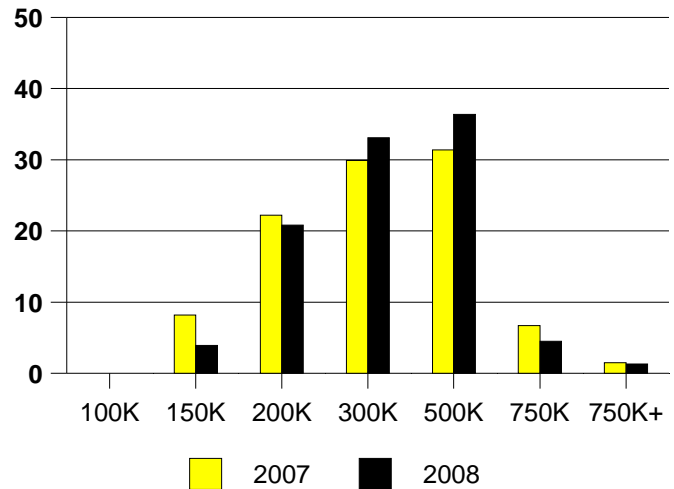


	<u>2007</u>	<u>2008</u>
Total Sold Volume	\$ 57,559,136	\$ 46,204,192
Number of Sales	194	154
Average Sales Price	\$ 296,696	\$ 300,027

DAYS ON THE MARKET (COPPELL)



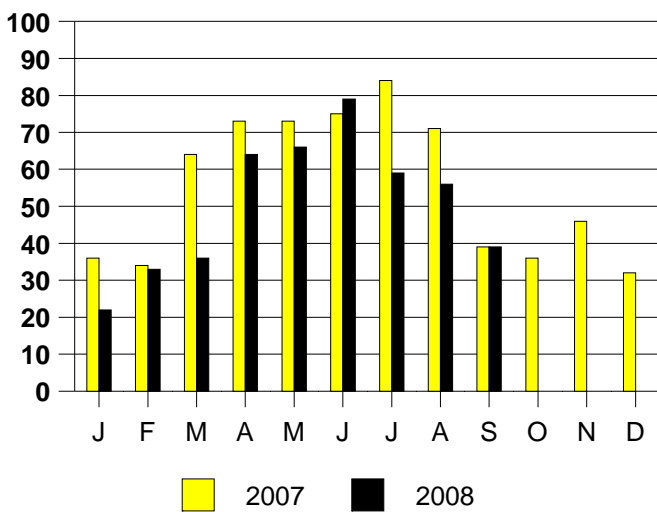
COPPELL MKT SHARE BY PRICE RANGE



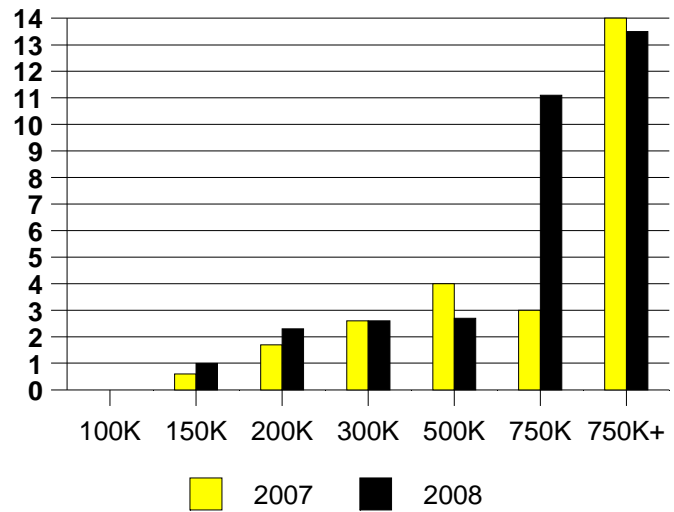
SALE/LIST PRICE RATIO

0K-100K	NONE
101K-150K	96.6%
151K-200K	98.2%
201K-300K	97.8%
301K-500K	97.2%
501K-750K	97.3%
751K+	99.0%

COPPELL MONTHLY SALES

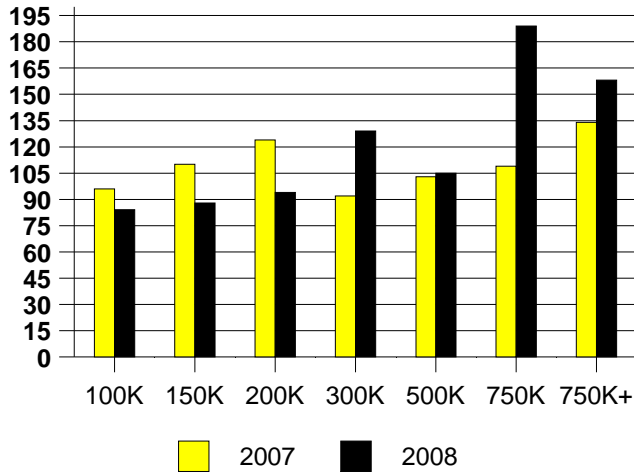


COPPELL MONTHS OF INVENTORY

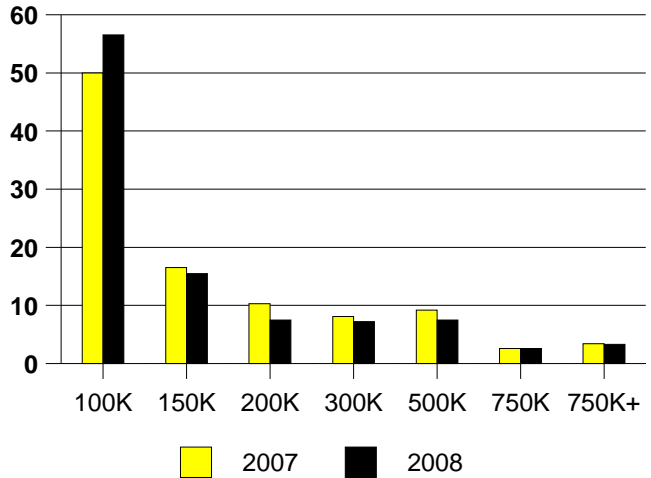


	2007	2008
Total Sold Volume	\$ 226,886,176	\$ 178,910,080
Number of Sales	1267	1100
Average Sales Price	\$ 179,073	\$ 170,867

DAYS ON THE MARKET (DALLAS)



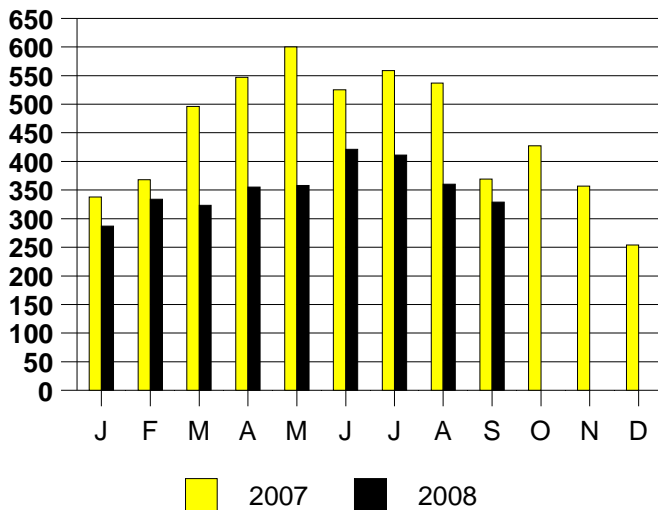
DALLAS MKT SHARE BY PRICE RANGE



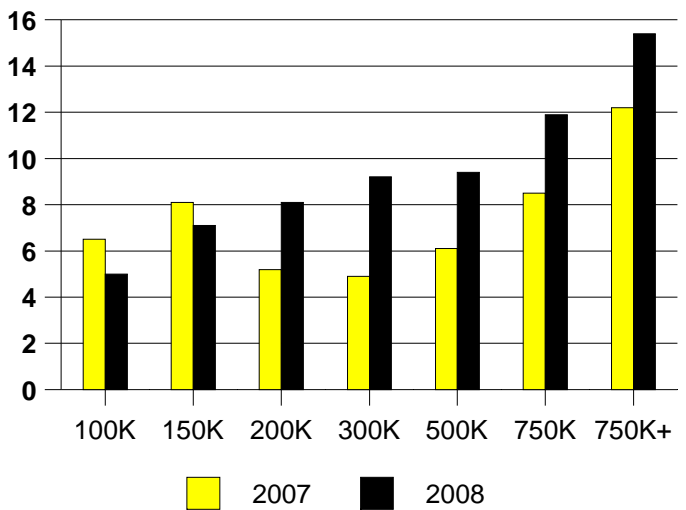
SALE/LIST PRICE RATIO

0K-100K	95.2%
101K-150K	98.7%
151K-200K	96.8%
201K-300K	97.5%
301K-500K	96.0%
501K-750K	97.1%
751K+	96.2%

DALLAS MONTHLY SALES

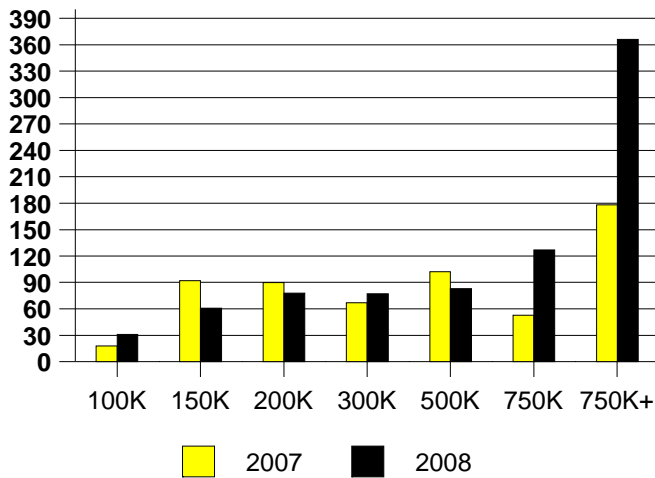


DALLAS MONTHS OF INVENTORY

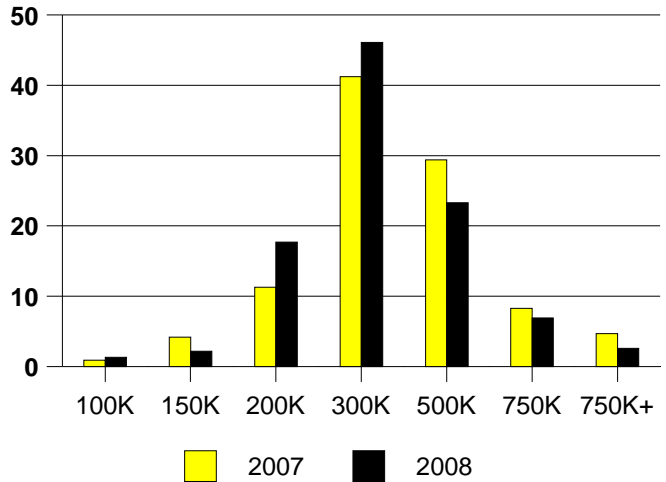


	<u>2007</u>	<u>2008</u>
Total Sold Volume	\$ 116,946,424	\$ 72,354,224
Number of Sales	337	232
Average Sales Price	\$ 347,022	\$ 311,871

DAYS ON THE MARKET (AREA 10)



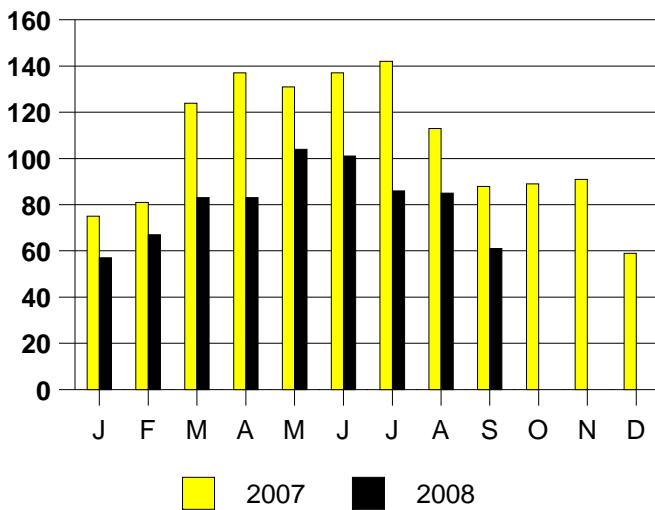
AREA 10 MKT SHARE BY PRICE RANGE



SALE/LIST PRICE RATIO

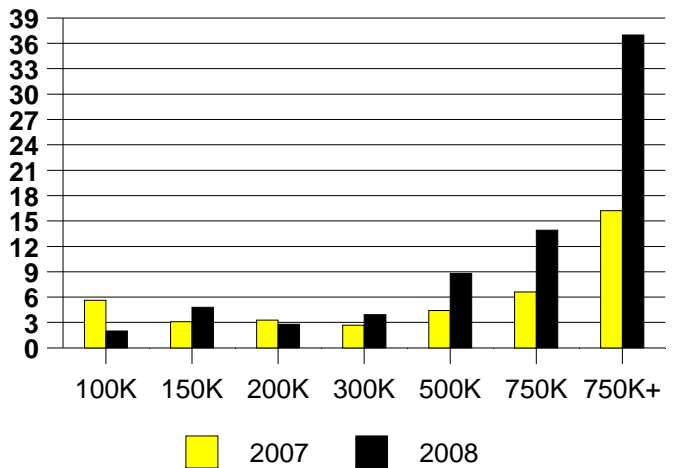
0K-100K	93.9%
101K-150K	95.6%
151K-200K	97.6%
201K-300K	97.3%
301K-500K	97.2%
501K-750K	95.5%
751K+	97.3%

AREA 10 MONTHLY SALES



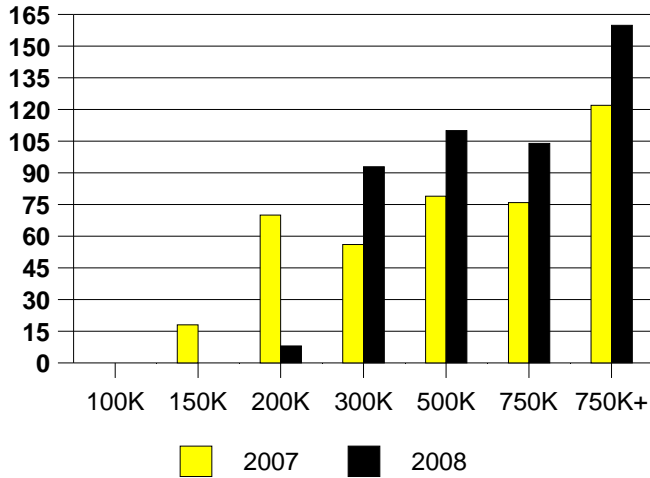
AREA 10 MONTHS OF INVENTORY

2007 Inventory is Year End

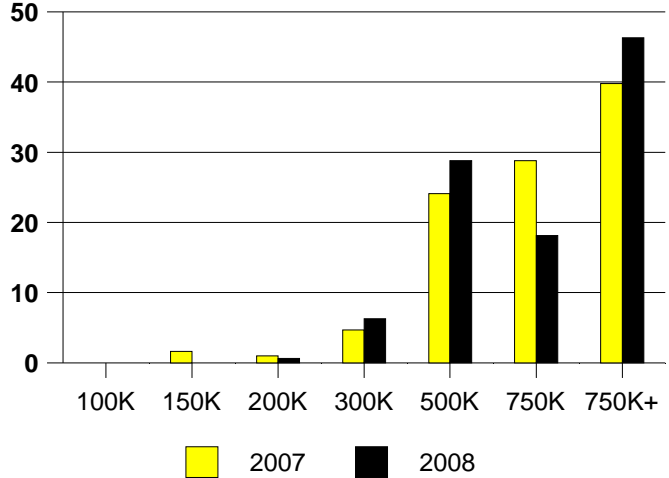


	<u>2007</u>	<u>2008</u>
Total Sold Volume	\$ 182,375,920	\$ 163,954,208
Number of Sales	191	160
Average Sales Price	\$ 954,847	\$ 1,024,713

DAYS ON THE MARKET (DALLAS NORTH)



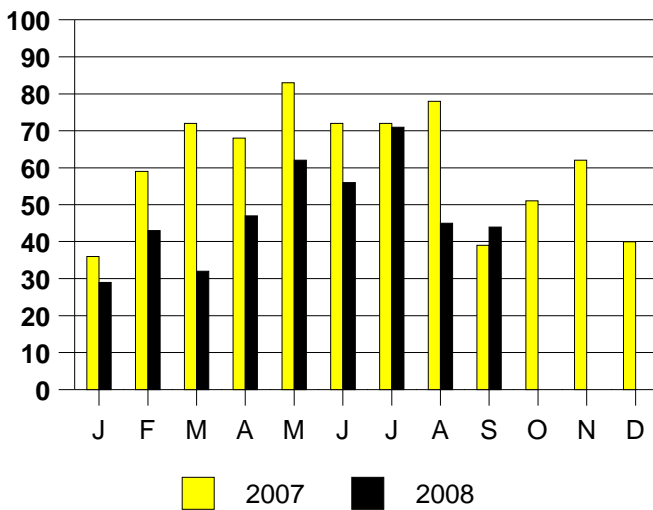
DALLAS N MKT SHARE BY PRICE RANGE



SALE/LIST PRICE RATIO

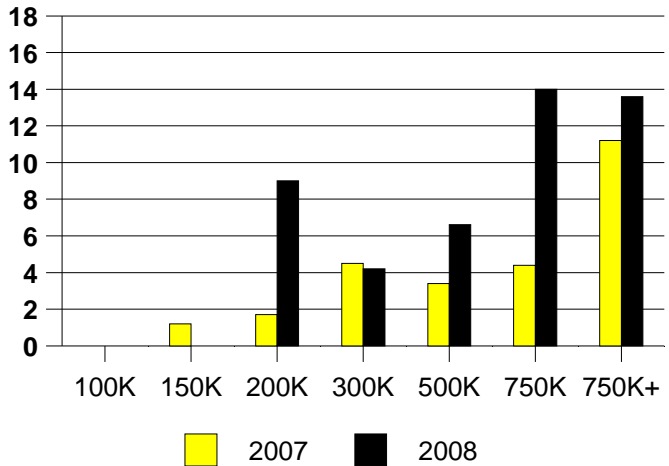
0K-100K	NONE
101K-150K	NONE
151K-200K	92.8%
201K-300K	93.4%
301K-500K	96.3%
501K-750K	97.2%
751K+	96.3%

DALLAS NORTH MONTHLY SALES



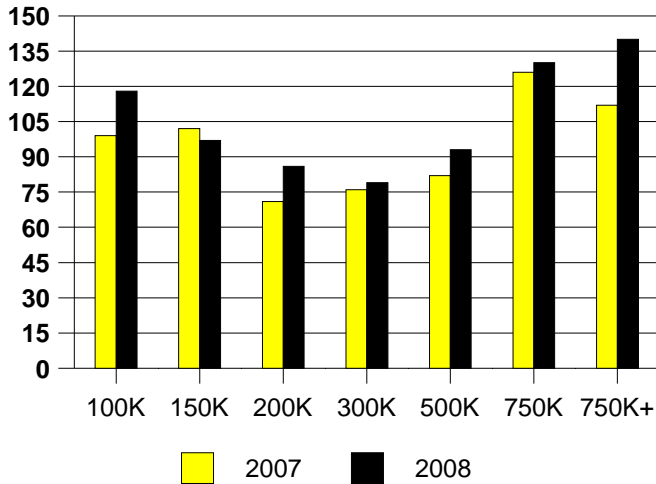
DALLAS NORTH MONTHS OF INVENTORY

2007 Inventory is Year End

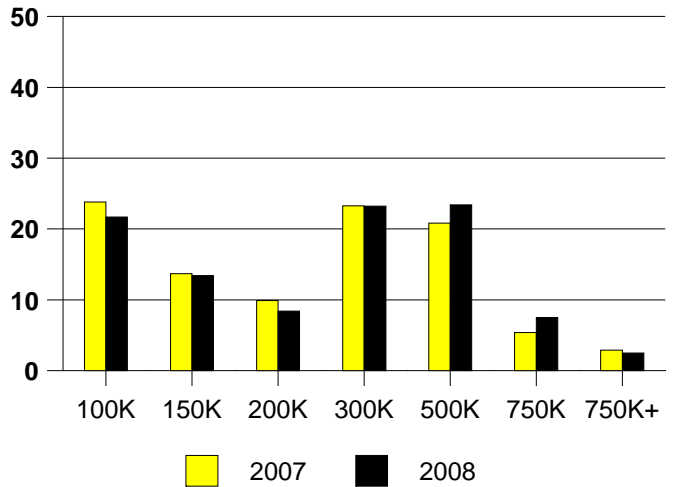


	2007	2008
Total Sold Volume	\$ 170,903,264	\$ 147,542,912
Number of Sales	686	561
Average Sales Price	\$ 249,130	\$ 262,999

DAYS ON THE MARKET (DALLAS EAST)



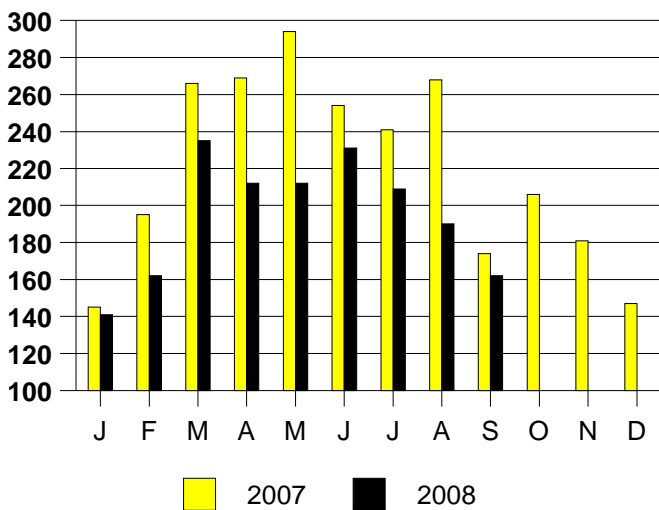
DALLAS NE MKT SHARE BY PRICE RANGE



SALE/LIST PRICE RATIO

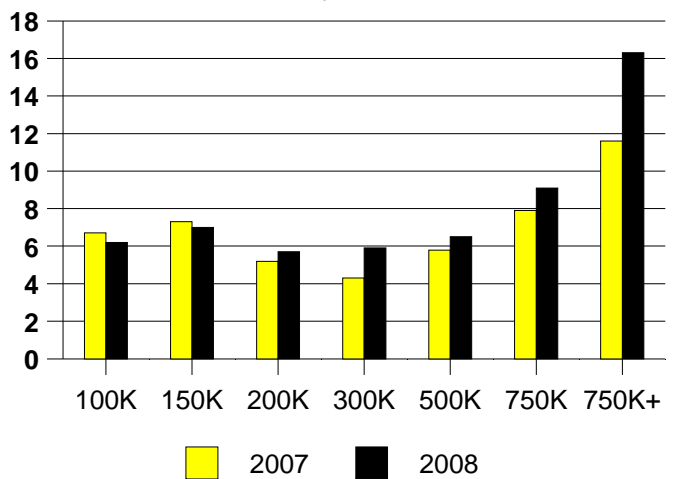
0K-100K	92.9%
101K-150K	98.1%
151K-200K	97.9%
201K-300K	96.8%
301K-500K	96.9%
501K-750K	97.2%
751K+	97.6%

DALLAS EAST MONTHLY SALES



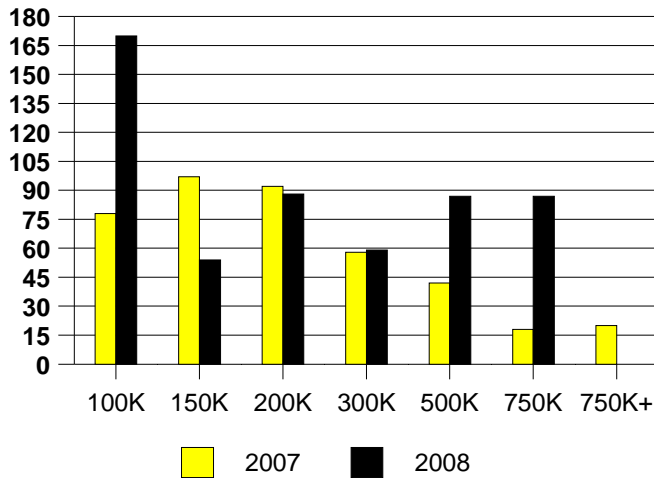
DALLAS EAST MONTHS OF INVENTORY

2007 Inventory is Year End

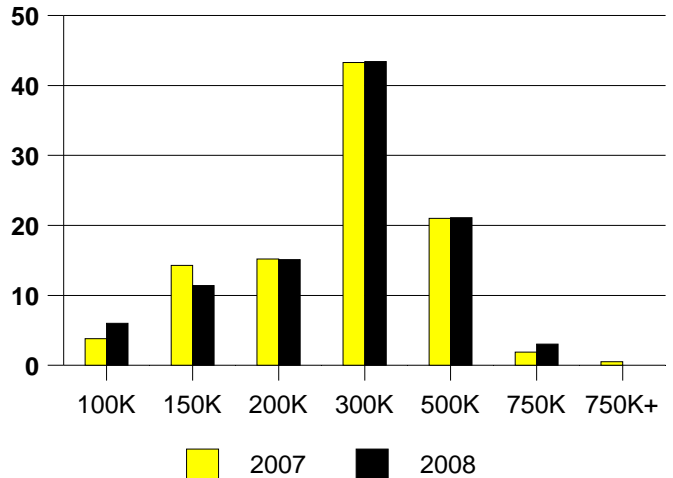


	2007	2008
Total Sold Volume	\$ 51,372,900	\$ 41,776,456
Number of Sales	210	166
Average Sales Price	\$ 244,632	\$ 251,665

DAYS ON THE MARKET (DALLAS NE)



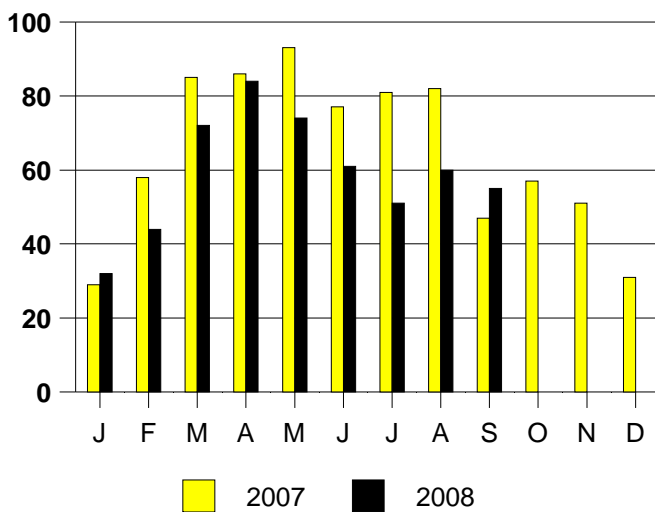
DALLAS NE MKT SHARE BY PRICE RANGE



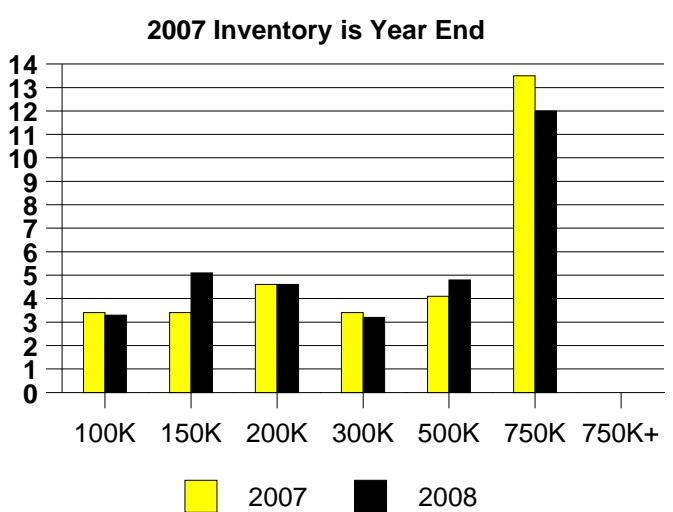
SALE/LIST PRICE RATIO

0K-100K	93.4%
101K-150K	96.6%
151K-200K	97.7%
201K-300K	97.6%
301K-500K	97.0%
501K-750K	96.4%
751K+	NONE

DALLAS NE MONTHLY SALES

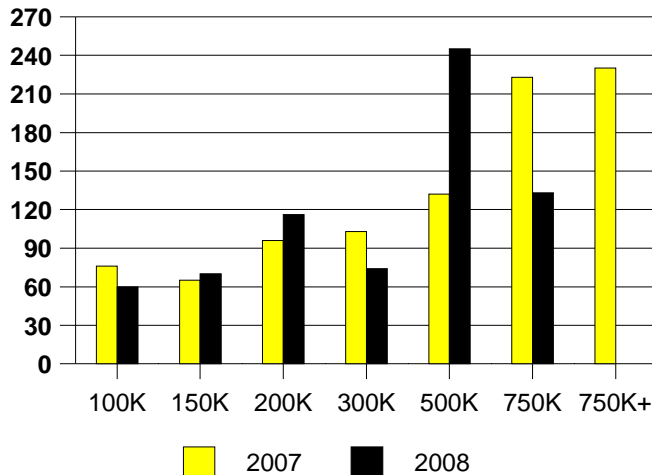


DALLAS NE MONTHS OF INVENTORY

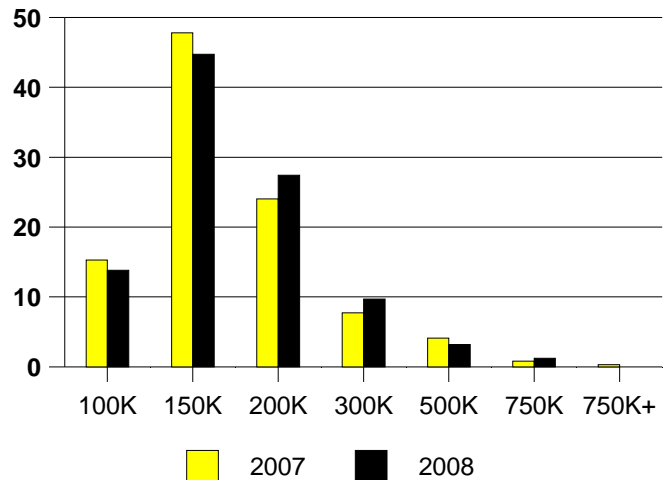


	<u>2007</u>	<u>2008</u>
Total Sold Volume	\$ 56,234,844	\$ 52,905,536
Number of Sales	366	340
Average Sales Price	\$ 153,647	\$ 155,604

DAYS ON THE MARKET (DENTON)



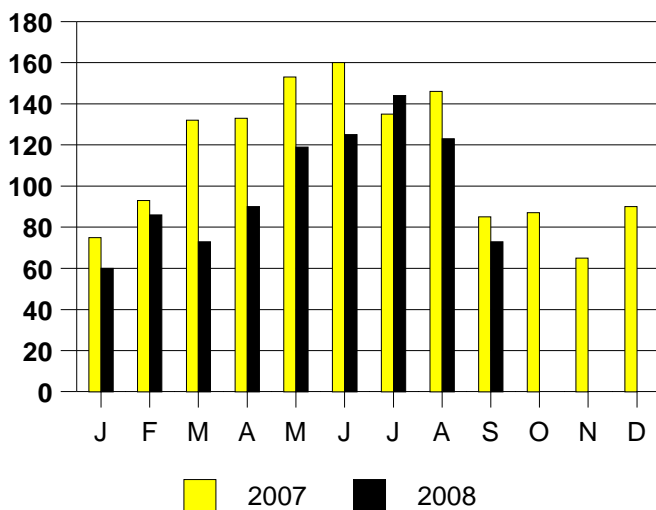
DENTON MKT SHARE BY PRICE RANGE



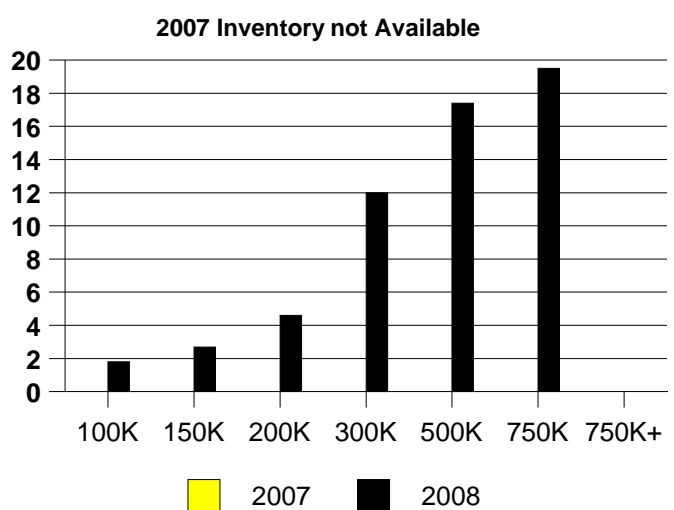
SALE/LIST PRICE RATIO

0K-100K	95.5%
101K-150K	98.3%
151K-200K	98.3%
201K-300K	96.3%
301K-500K	93.8%
501K-750K	95.3%
751K+	NONE

DENTON MONTHLY SALES

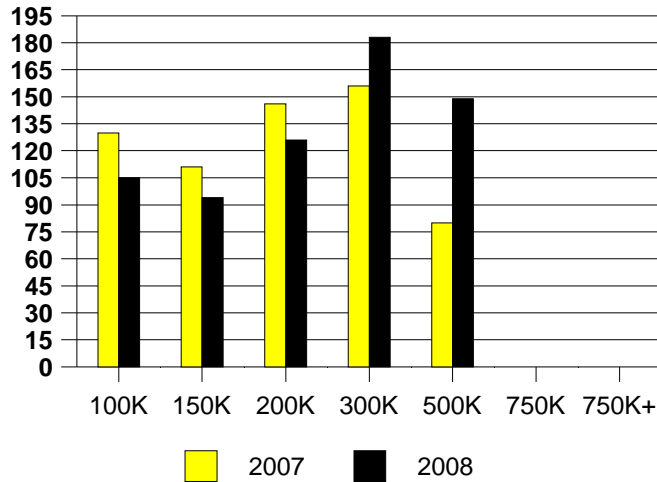


DENTON MONTHS OF INVENTORY

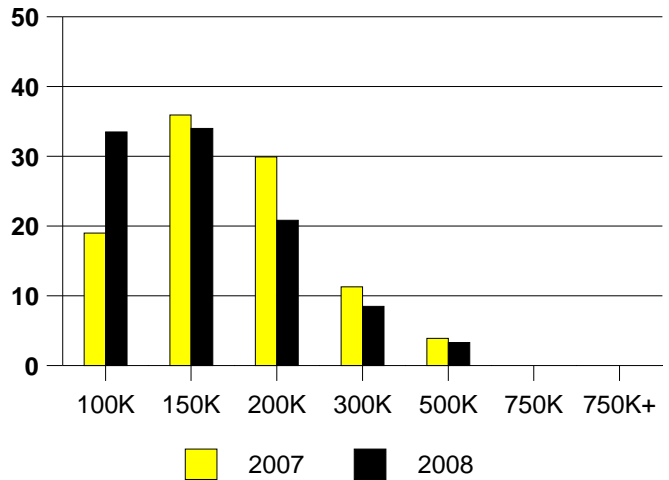


	<u>2007</u>	<u>2008</u>
Total Sold Volume	\$ 35,518,448	\$ 29,332,872
Number of Sales	231	212
Average Sales Price	\$ 153,759	\$ 138,362

DAYS ON THE MARKET (DESOTO)



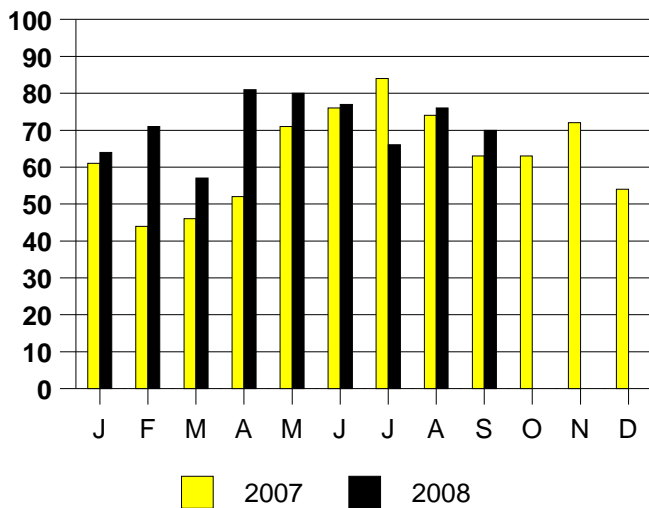
DESOTO MKT SHARE BY PRICE RANGE



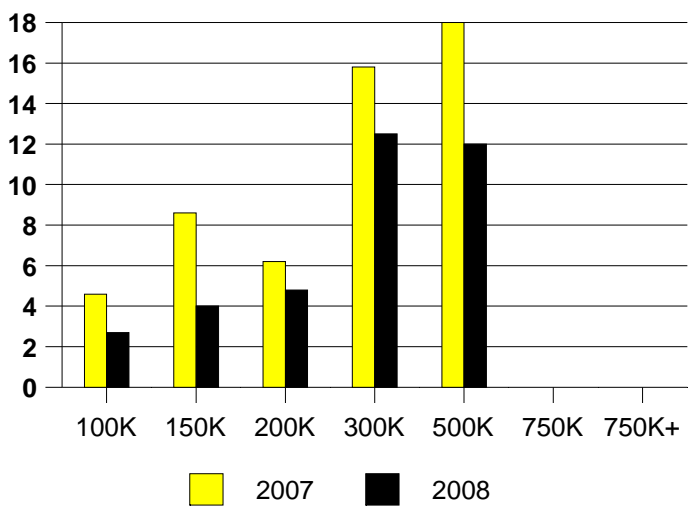
SALE/LIST PRICE RATIO

0K-100K	96.4%
101K-150K	99.3%
151K-200K	97.9%
201K-300K	97.8%
301K-500K	95.6%
501K-750K	NONE
751K+	NONE

DESOTO MONTHLY SALES

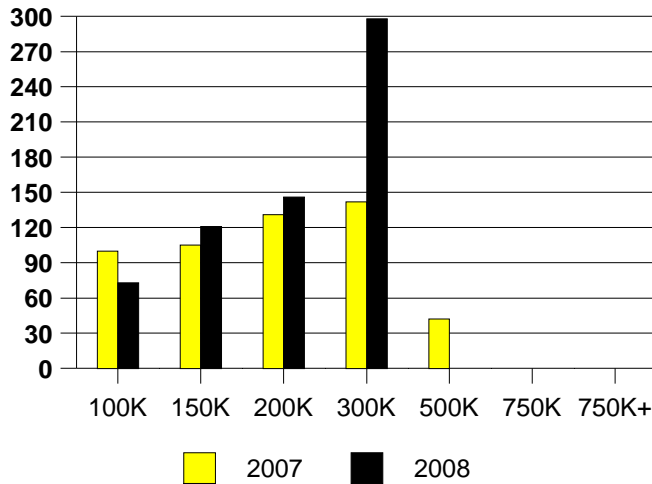


DESOTO MONTHS OF INVENTORY

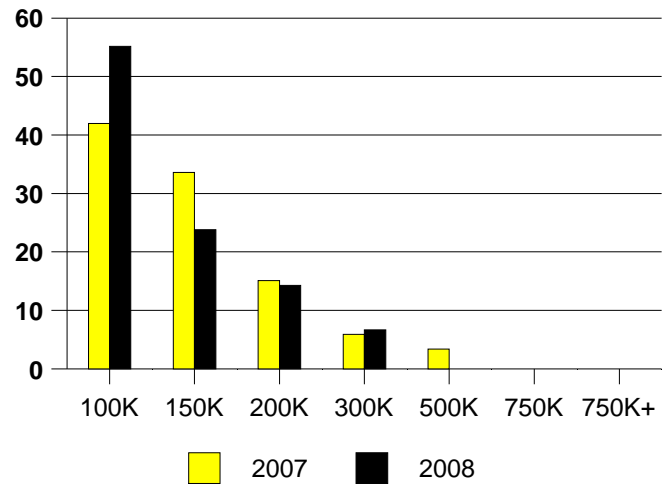


	2007	2008
Total Sold Volume	\$ 14,903,906	\$ 11,505,403
Number of Sales	119	105
Average Sales Price	\$ 125,242	\$ 109,575

DAYS ON THE MARKET (DUNCANVILLE)



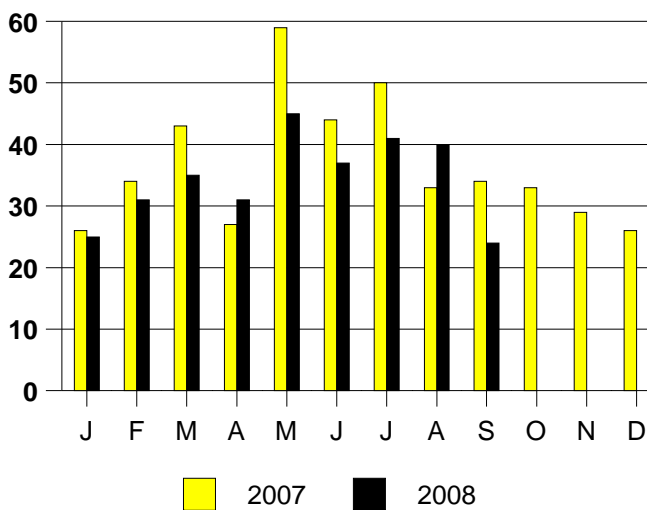
DUNCANVILLE MKT SHARE BY PRICE RANGE



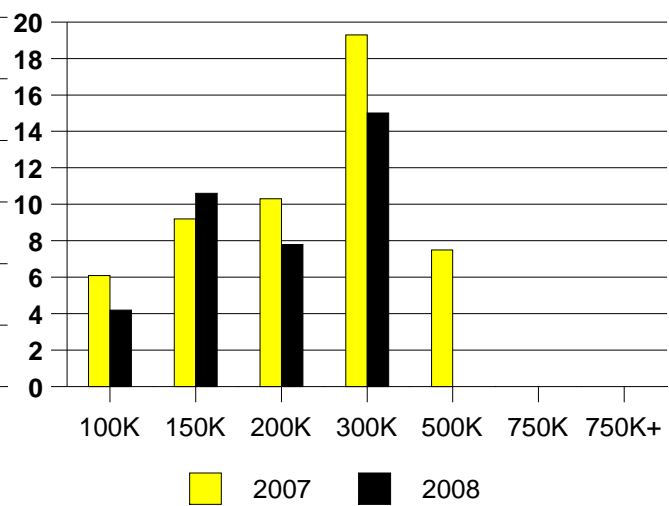
SALE/LIST PRICE RATIO

0K-100K	97.1%
101K-150K	98.0%
151K-200K	97.1%
201K-300K	95.1%
301K-500K	NONE
501K-750K	NONE
751K+	NONE

DUNCANVILLE MONTHLY SALES

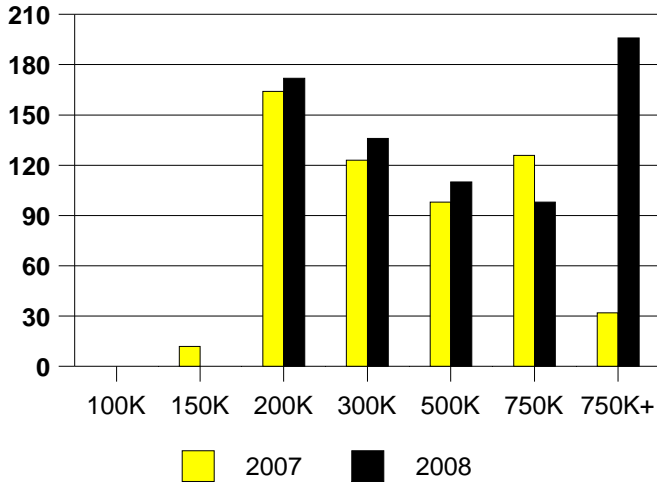


DUNCANVILLE MONTHS OF INVENTORY

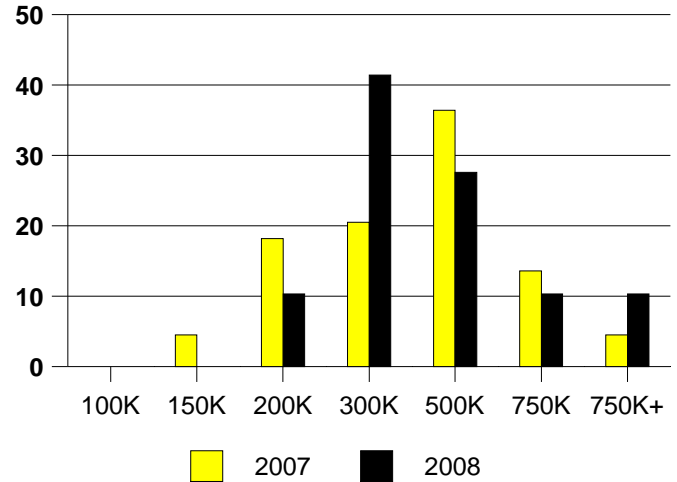


	<u>2007</u>	<u>2008</u>
Total Sold Volume	\$ 16,157,679	\$ 11,235,080
Number of Sales	44	29
Average Sales Price	\$ 367,219	\$ 387,416

DAYS ON THE MARKET (FAIRVIEW)



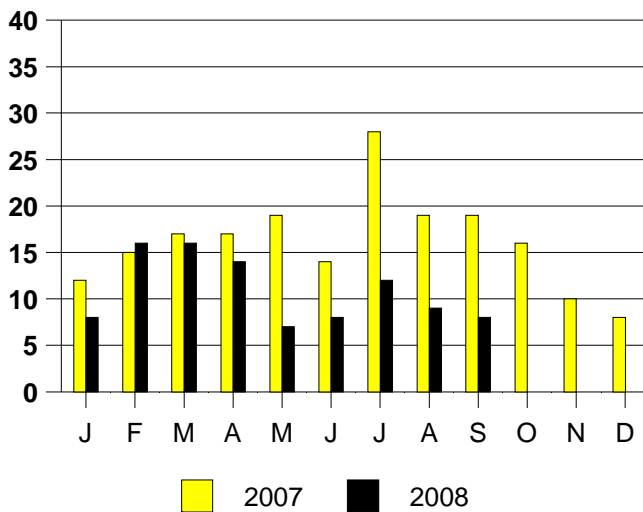
FAIRVIEW MKT SHARE BY PRICE RANGE



SALE/LIST PRICE RATIO

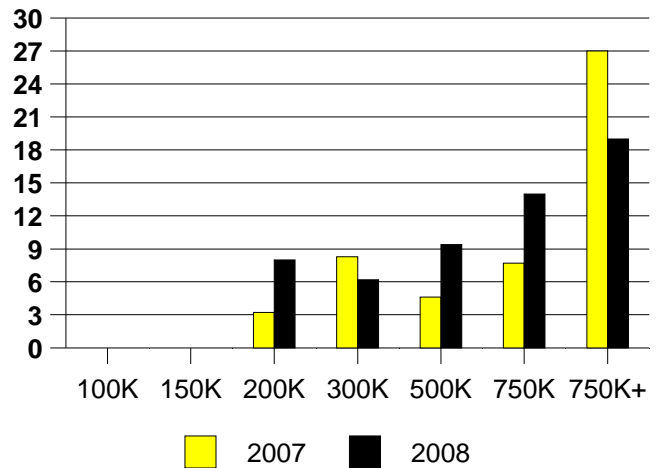
0K-100K	NONE
101K-150K	NONE
151K-200K	97.5%
201K-300K	96.6%
301K-500K	96.7%
501K-750K	99.6%
751K+	92.8%

FAIRVIEW MONTHLY SALES



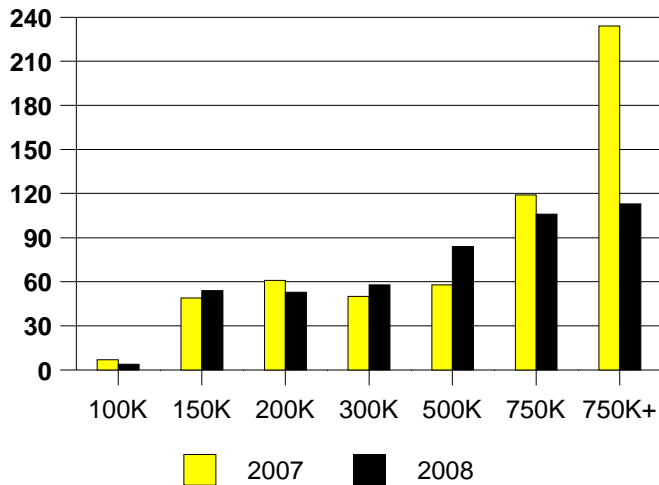
FAIRVIEW MONTHS OF INVENTORY

2007 Inventory is Year End

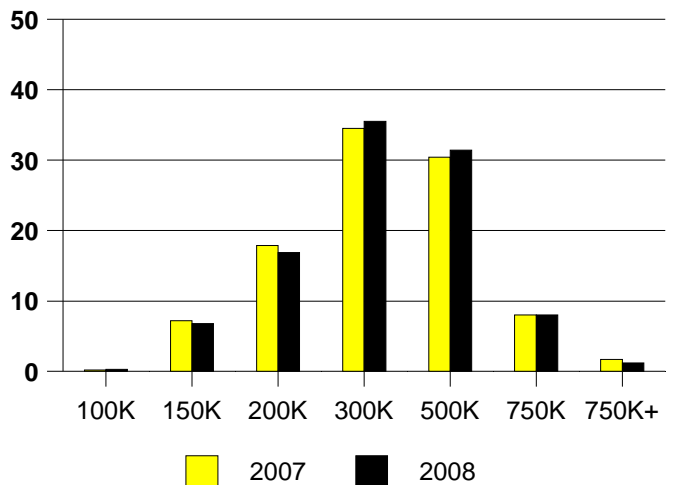


	2007	2008
Total Sold Volume	\$ 125,804,144	\$ 103,825,368
Number of Sales	414	338
Average Sales Price	\$ 303,874	\$ 307,176

DAYS ON THE MARKET (FLOWER MOUND)



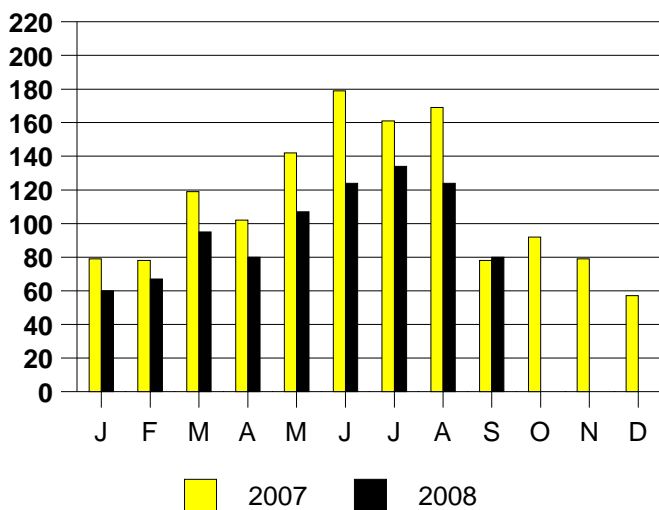
FLOWER MOUND MKT SHARE BY PRICE



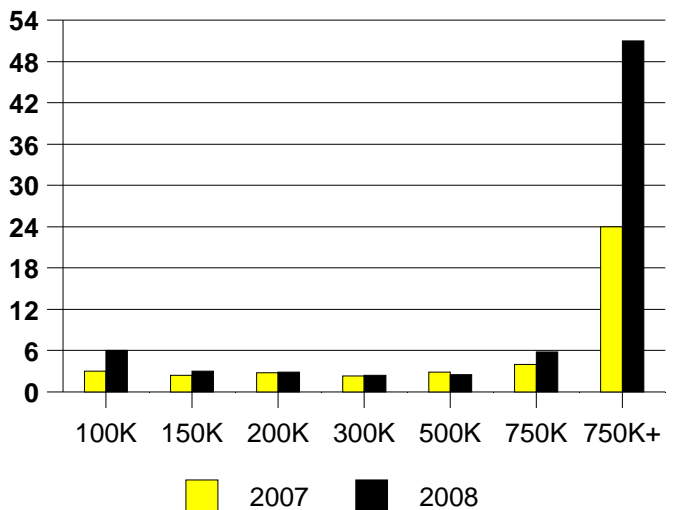
SALE/LIST PRICE RATIO

0K-100K	85.7%
101K-150K	96.4%
151K-200K	98.9%
201K-300K	98.4%
301K-500K	97.7%
501K-750K	96.8%
751K+	93.8%

FLOWER MOUND MONTHLY SALES

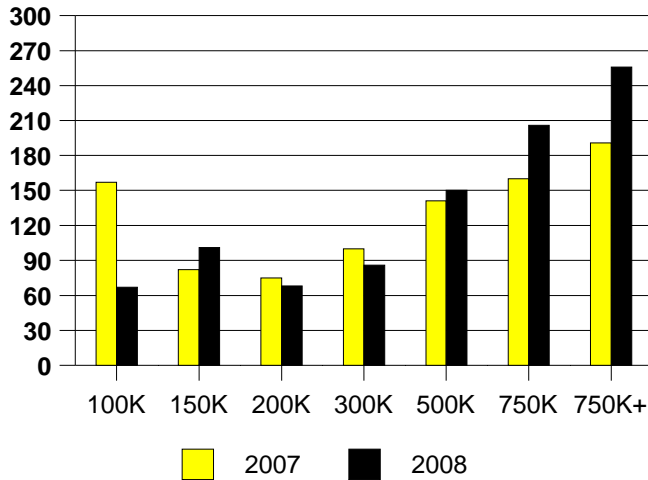


FLOWER MOUND MONTHS OF INVENTORY

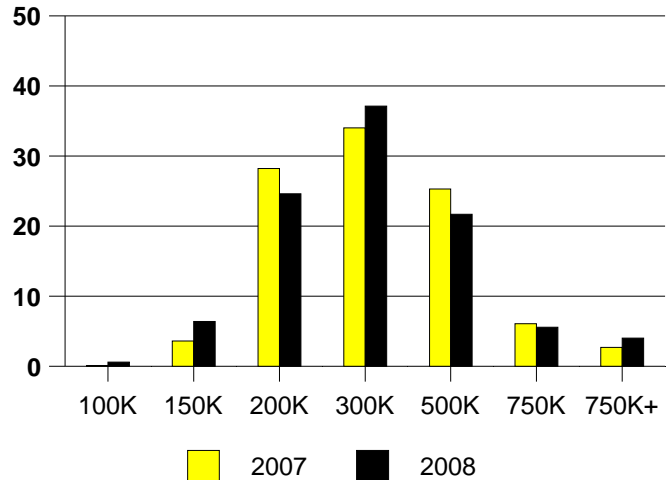


	<u>2007</u>	<u>2008</u>
Total Sold Volume	\$ 233,560,800	\$ 203,471,328
Number of Sales	783	658
Average Sales Price	\$ 298,289	\$ 309,226

DAYS ON MARKET(FRISCO)



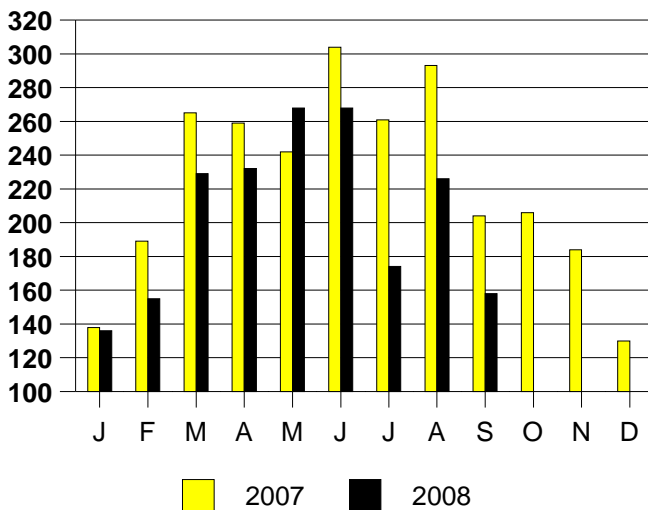
FRISCO MKT SHARE BY PRICE RANGE



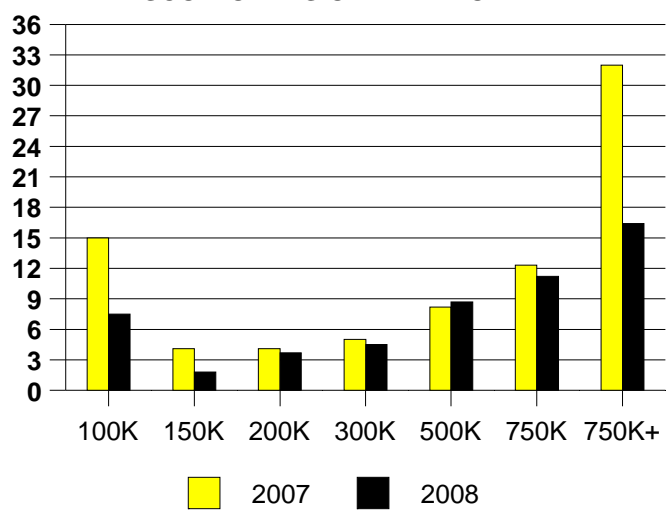
SALE/LIST PRICE RATIO

0K-100K	94.6%
101K-150K	97.6%
151K-200K	98.4%
201K-300K	97.8%
301K-500K	95.3%
501K-750K	95.8%
751K+	95.8%

FRISCO MONTHLY SALES

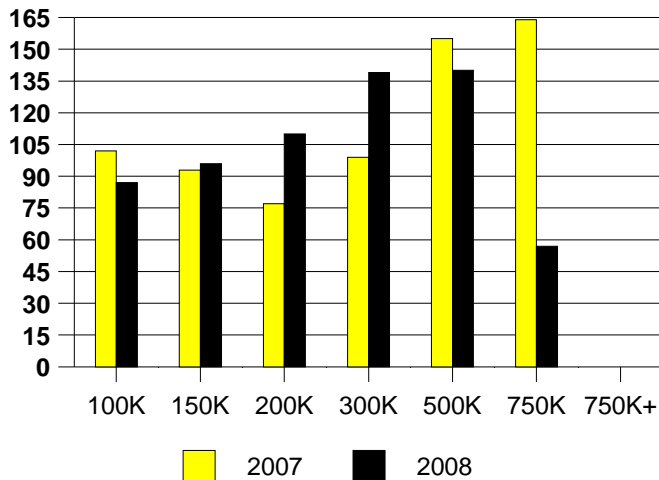


FRISCO MONTHS OF INVENTORY

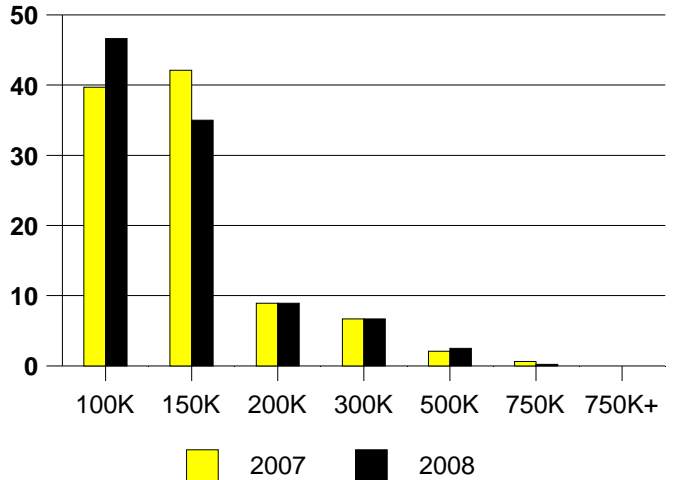


	<u>2007</u>	<u>2008</u>
Total Sold Volume	\$ 84,210,736	\$ 65,235,948
Number of Sales	675	552
Average Sales Price	\$ 124,756	\$ 118,181

DAYS ON THE MARKET (GARLAND)



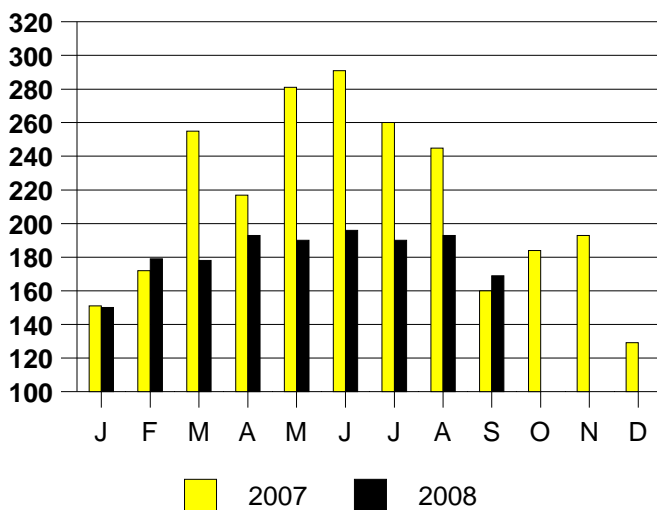
GARLAND MKT SHARE BY PRICE RANGE



SALE/LIST PRICE RATIO

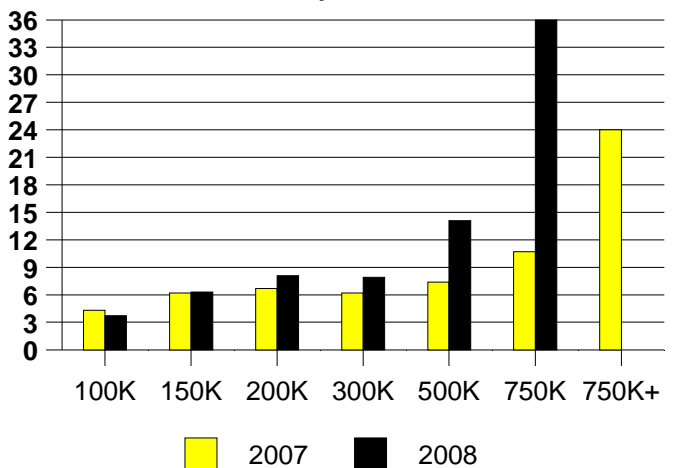
0K-100K	97.2%
101K-150K	98.8%
151K-200K	98.7%
201K-300K	96.1%
301K-500K	94.0%
501K-750K	90.3%
751K+	NONE

GARLAND MONTHLY SALES

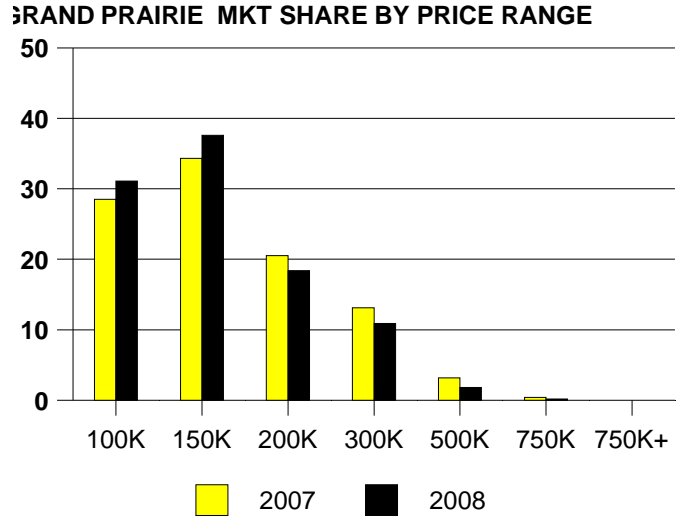
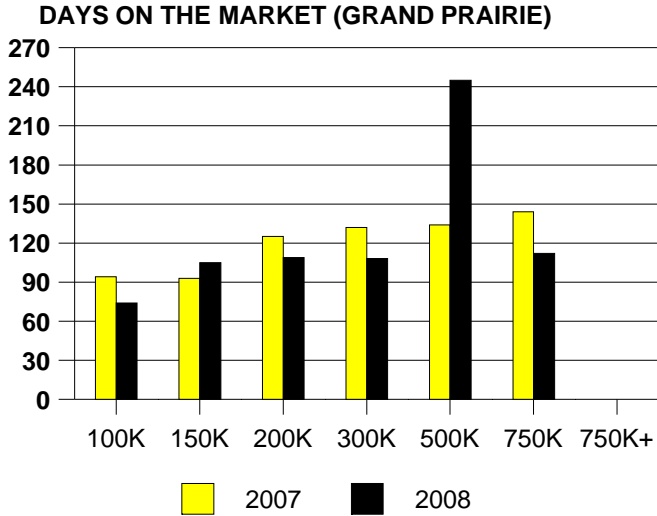


GARLAND MONTHS OF INVENTORY

2007 Inventory is Year End

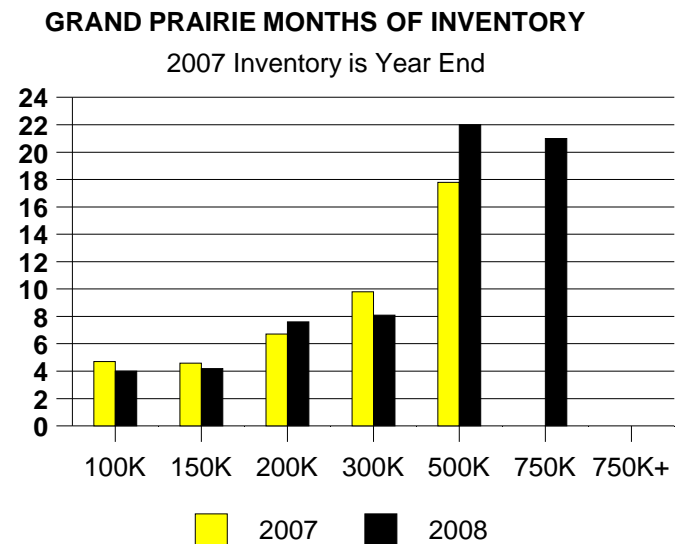
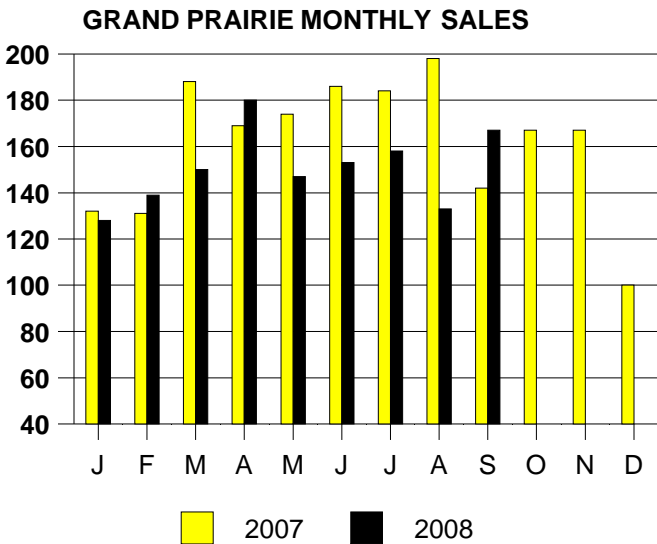


	<u>2007</u>	<u>2008</u>
Total Sold Volume	\$77,196,328	\$ 60,767,600
Number of Sales	536	450
Average Sales Price	\$ 144,023	\$ 135,039



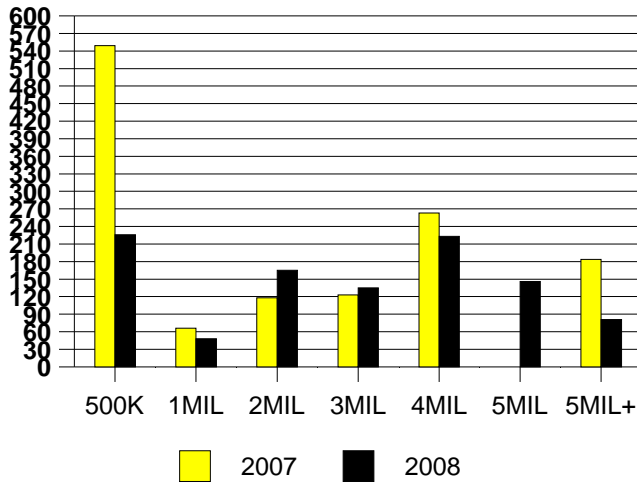
SALE/LIST PRICE RATIO

0K-100K	95.3%
101K-150K	99.3%
151K-200K	97.4%
201K-300K	97.4%
301K-500K	93.3%
501K-750K	84.9%
751K+	NONE

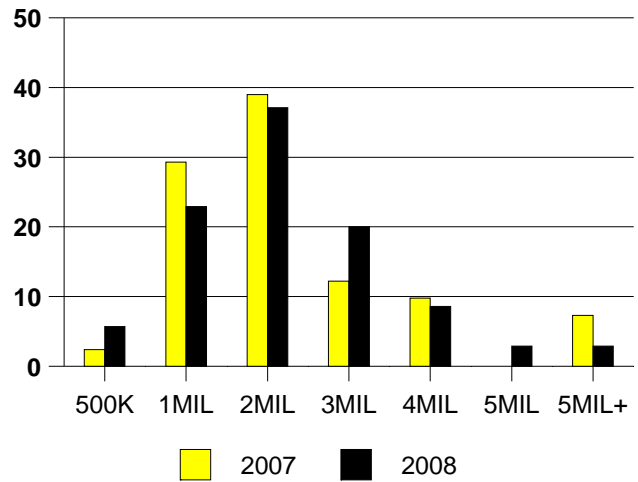


	2007	2008
Total Sold Volume	\$ 78,237,000	\$ 61,359,892
Number of Sales	41	35
Average Sales Price	\$ 1,908,219	\$ 1,753,139

DAYS ON THE MARKET (HP)



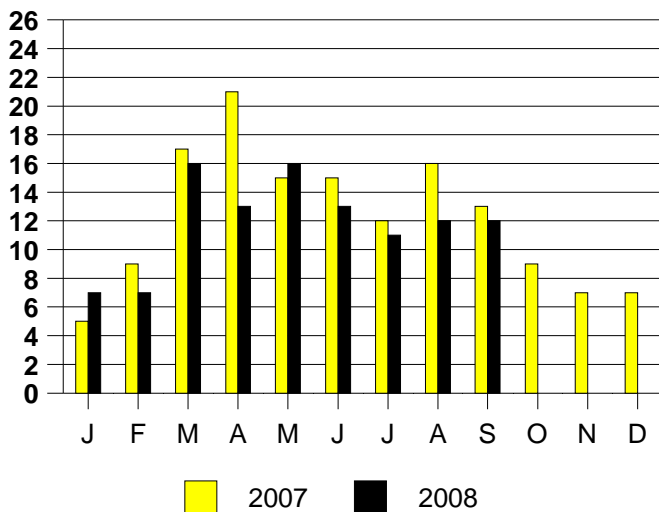
MKT SHARE BY PRICE RANGE (HP)



SALE/LIST PRICE RATIO

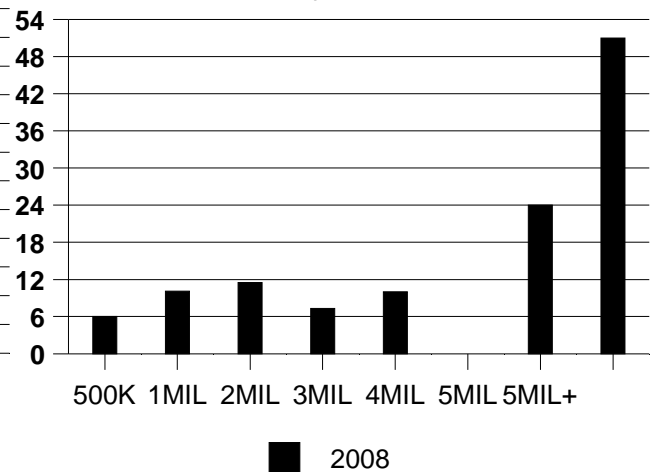
0K-500K	92.6%
501K-1MIL	95.1%
1MIL-2MIL	93.9%
2MIL-3MIL	96.3%
3MIL-4MIL	97.5%
4MIL-5MIL	97.4%
5MIL+	100.0%

HIGHLAND PARK MONTHLY SALES



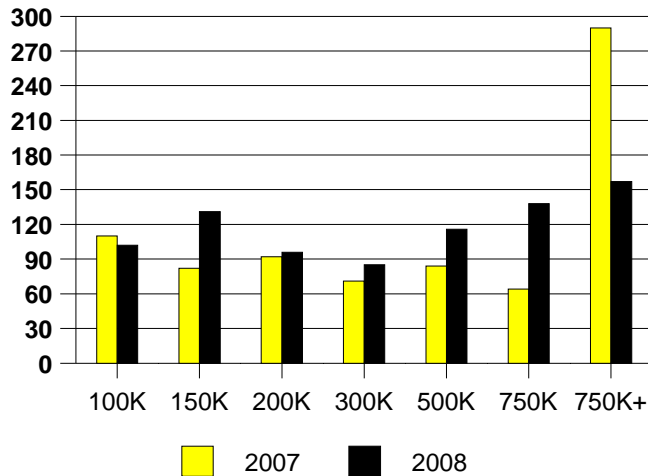
MONTHS OF INVENTORY (HIGHLAND PARK)

2007 Inventory not Available

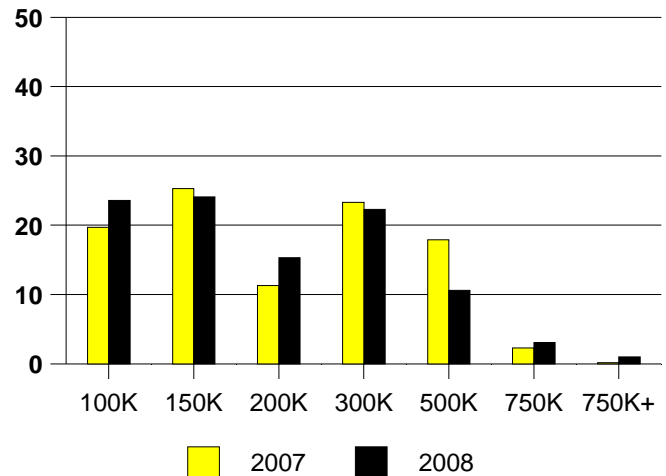


	<u>2007</u>	<u>2008</u>
Total Sold Volume	\$ 90,461,416	\$ 75,854,440
Number of Sales	442	386
Average Sales Price	\$ 204,663	\$ 196,514

DAYS ON THE MARKET (IRVING)



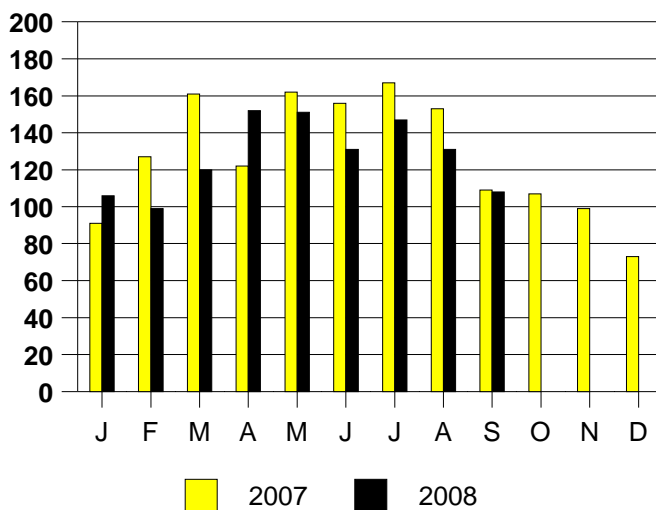
IRVING MKT SHARE BY PRICE RANGE



SALE/LIST PRICE RATIO

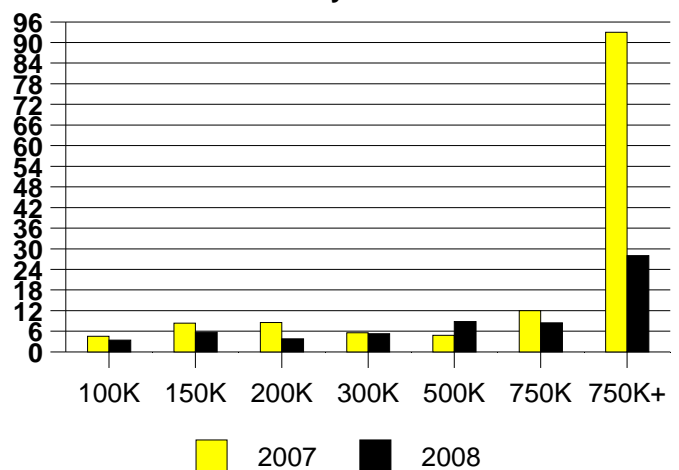
0K-100K	97.5%
101K-150K	98.4%
151K-200K	98.2%
201K-300K	96.6%
301K-500K	96.3%
501K-750K	96.5%
751K+	89.7%

IRVING MONTHLY SALES



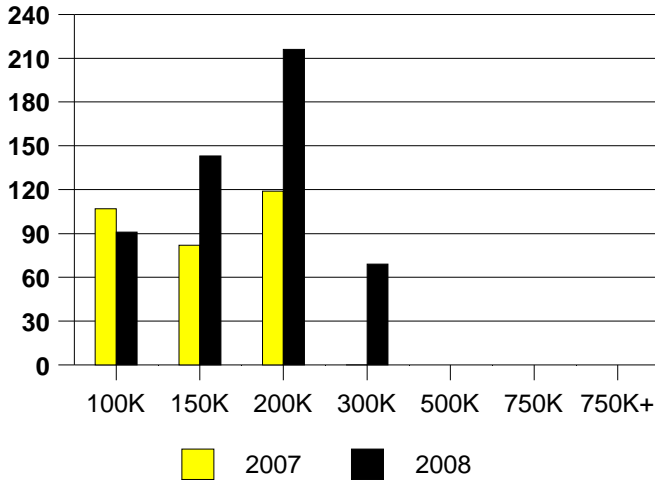
IRVING MONTHS OF INVENTORY

2007 Inventory is Year End

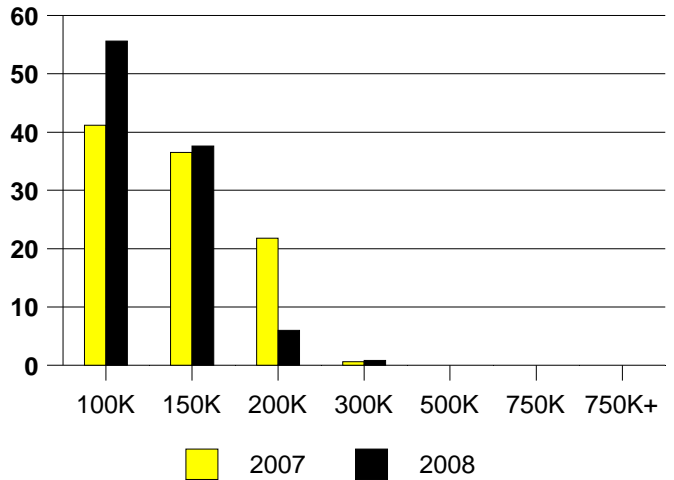


	2007	2008
Total Sold Volume	\$ 19,119,570	\$ 12,563,879
Number of Sales	170	133
Average Sales Price	\$ 112,468	\$ 94,465

DAYS ON THE MARKET (LANCASTER)



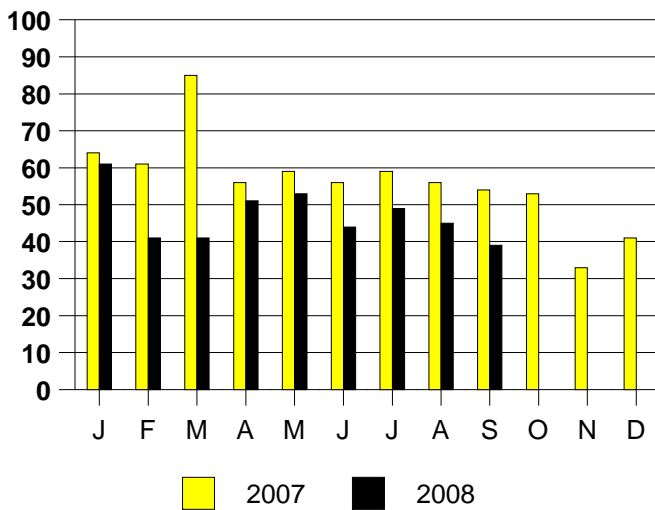
LANCASTER MKT SHARE BY PRICE RANGE



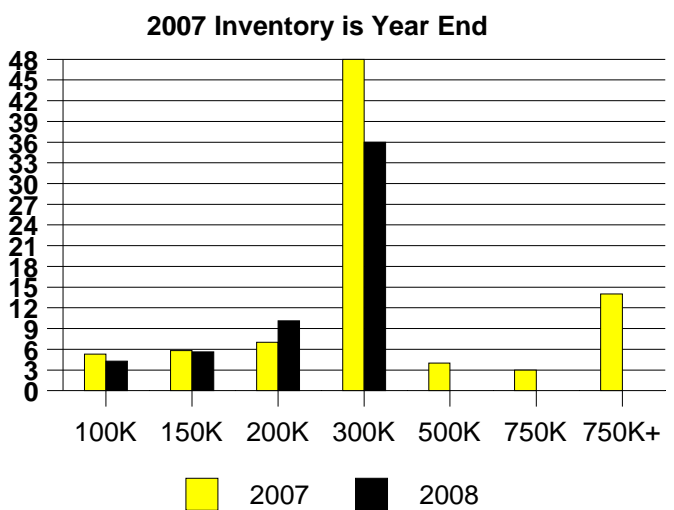
SALE/LIST PRICE RATIO

0K-100K	94.9%
101K-150K	101.0%
151K-200K	99.2%
201K-300K	98.2%
301K-500K	NONE
501K-750K	NONE
751K+	NONE

LANCASTER MONTHLY SALES

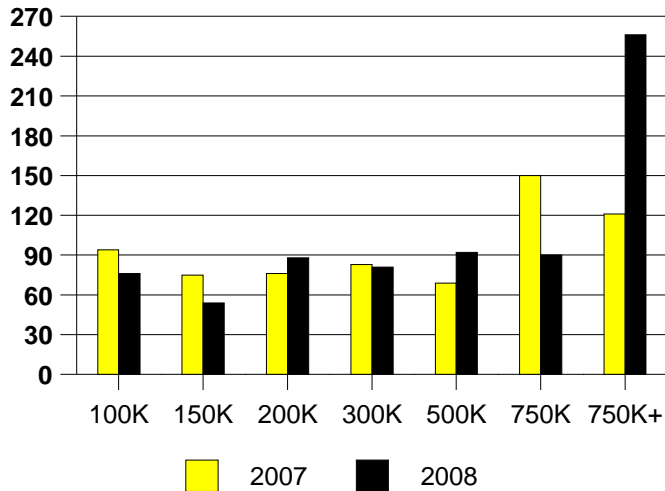


LANCASTER MONTHS OF INVENTORY

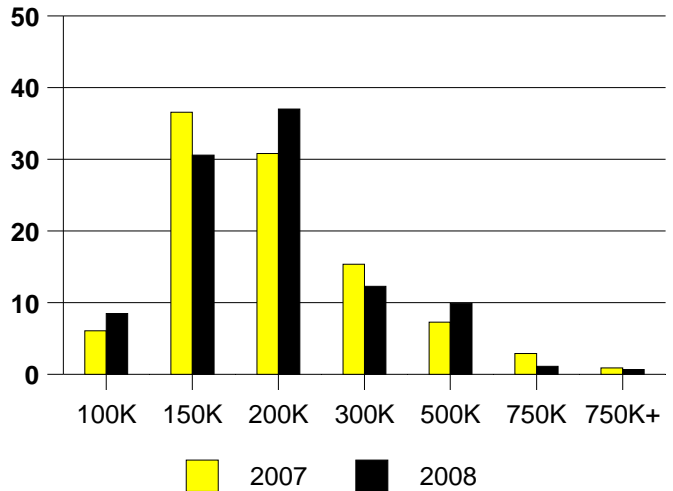


	2007	2008
Total Sold Volume	\$ 67,250,048	\$ 53,958,204
Number of Sales	344	284
Average Sales Price	\$ 195,494	\$ 189,993

DAYS ON THE MARKET (LEWISVILLE)



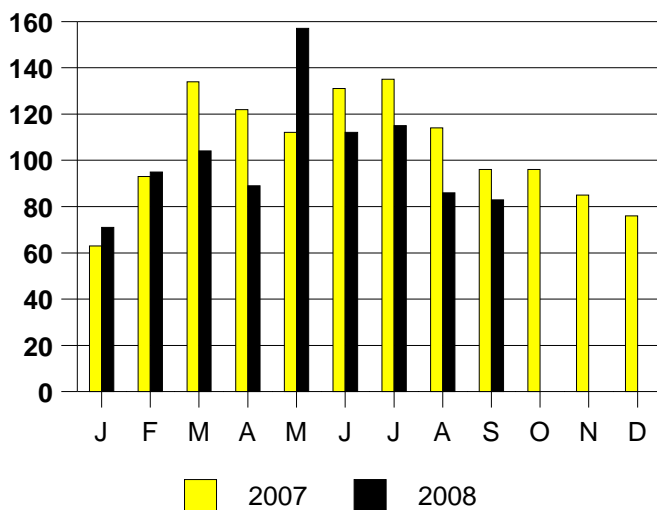
LEWISVILLE MKT SHARE BY PRICE RANGE



SALE/LIST PRICE RATIO

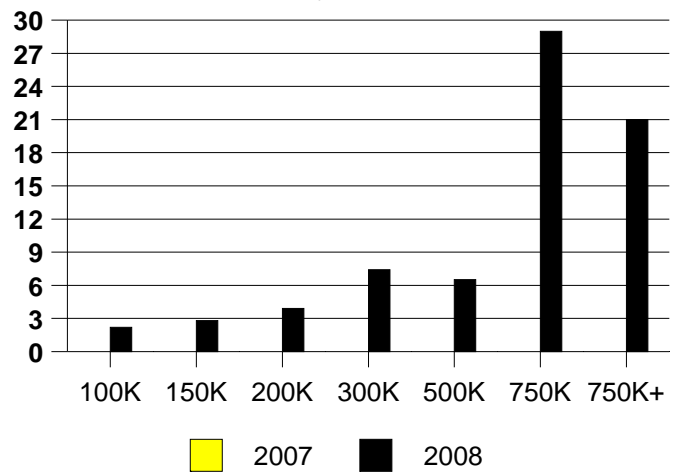
0K-100K	97.1%
101K-150K	98.3%
151K-200K	99.1%
201K-300K	95.6%
301K-500K	95.3%
501K-750K	93.6%
751K+	100.0%

LEWISVILLE MONTHLY SALES



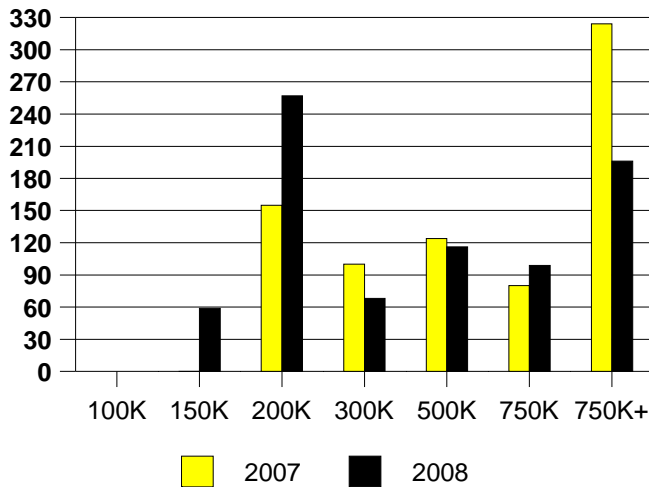
LEWISVILLE MONTHS OF INVENTORY

2007 Inventory not Available

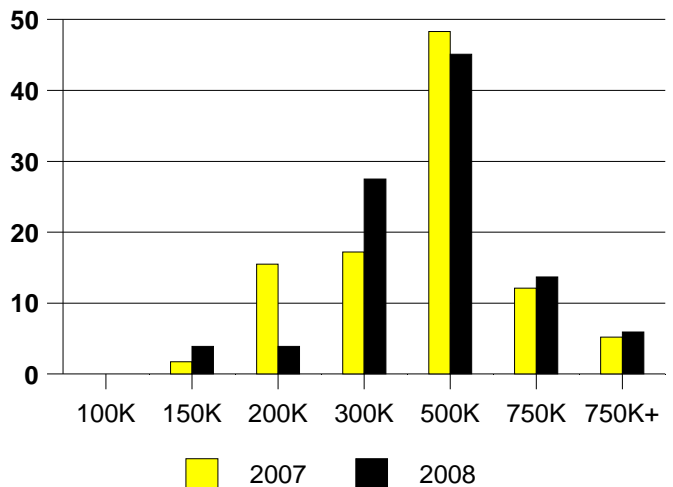


	2007	2008
Total Sold Volume	\$ 22,457,052	\$ 19,948,800
Number of Sales	58	51
Average Sales Price	\$ 387,190	\$ 391,152

DAYS ON THE MARKET (LOVEJOY)



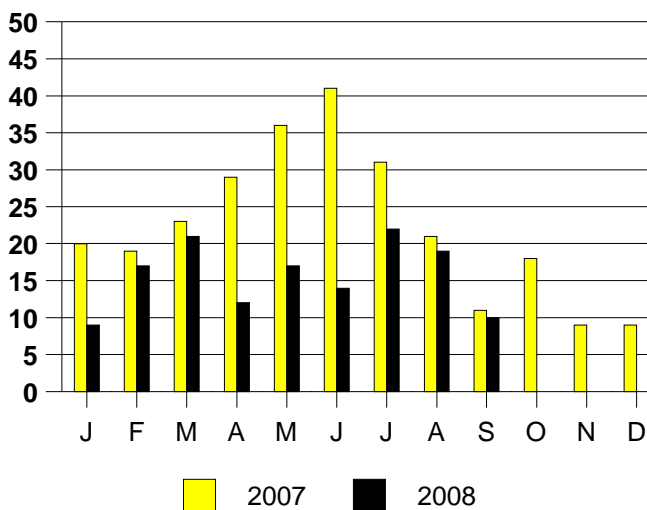
LOVEJOY MKT SHARE BY PRICE RANGE



SALE/LIST PRICE RATIO

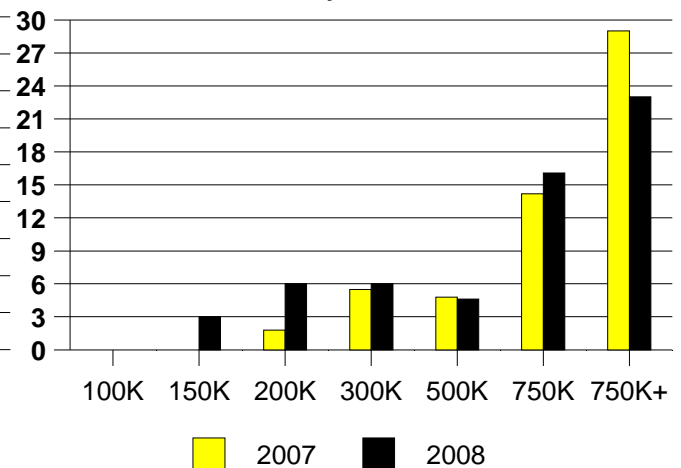
0K-100K	NONE
101K-150K	105.6%
151K-200K	96.0%
201K-300K	97.4%
301K-500K	97.7%
501K-750K	98.3%
751K+	92.8%

LOVEJOY MONTHLY SALES



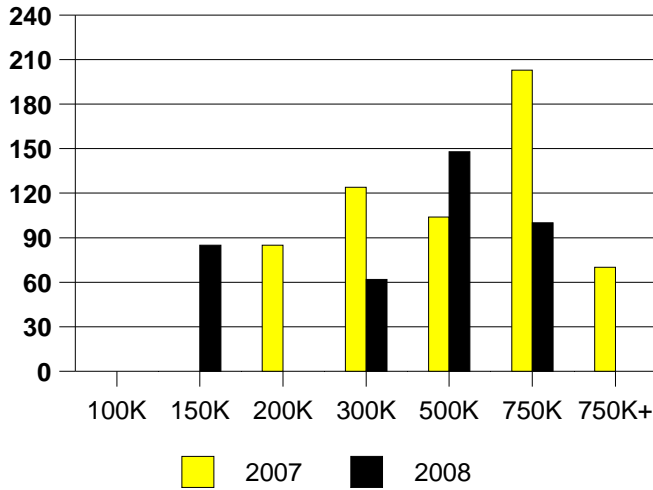
LOVEJOY MONTHS OF INVENTORY

2007 Inventory is Year End

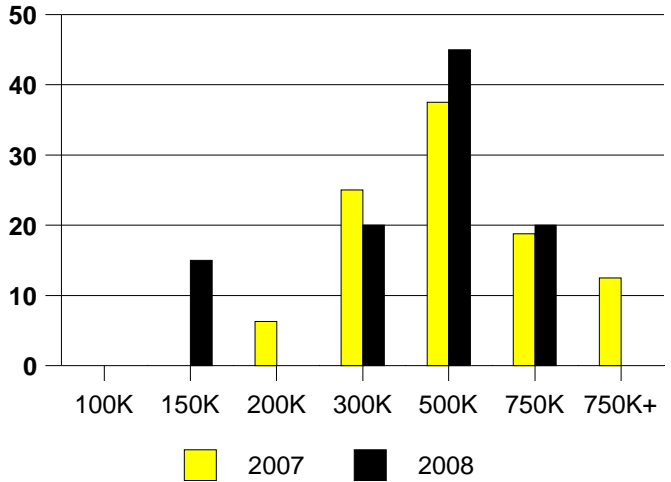


	2007	2008
Total Sold Volume	\$ 6,505,281	\$ 7,269,150
Number of Sales	16	20
Average Sales Price	\$ 406,580	\$ 363,457

DAYS ON THE MARKET (LUCAS)



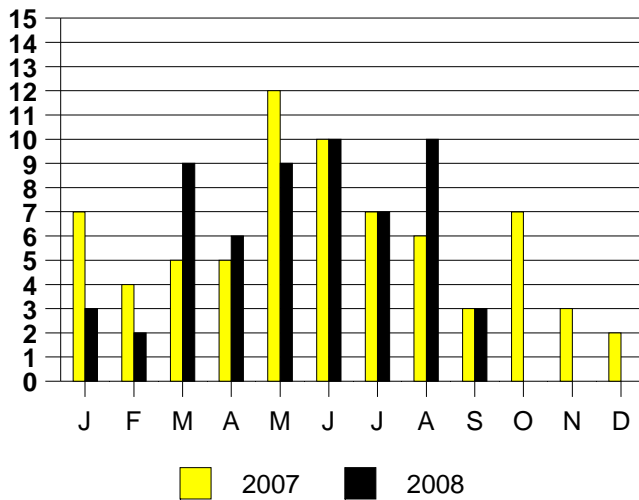
LUCAS MKT SHARE BY PRICE RANGE



SALE/LIST PRICE RATIO

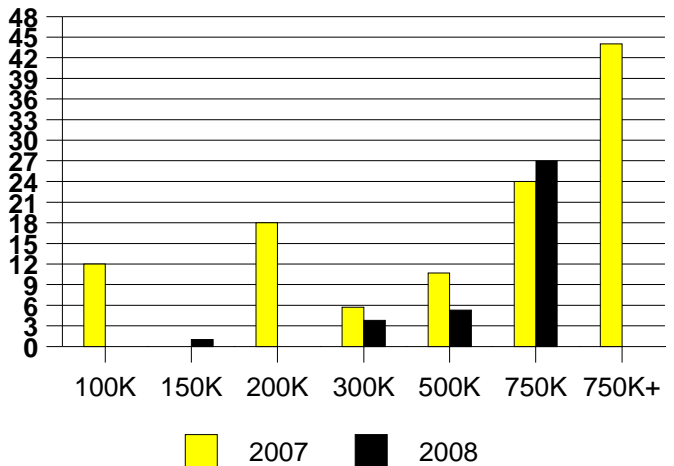
0K-100K	NONE
101K-150K	100.2%
151K-200K	NONE
201K-300K	96.9%
301K-500K	99.5%
501K-750K	97.4%
751K+	NONE

LUCAS MONTHLY SALES

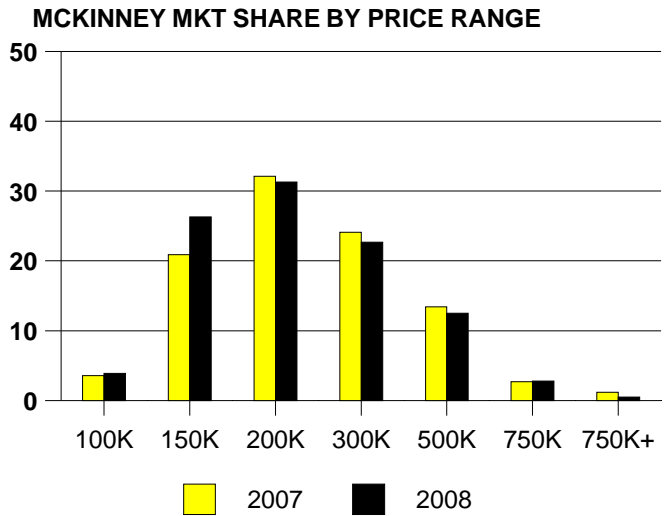
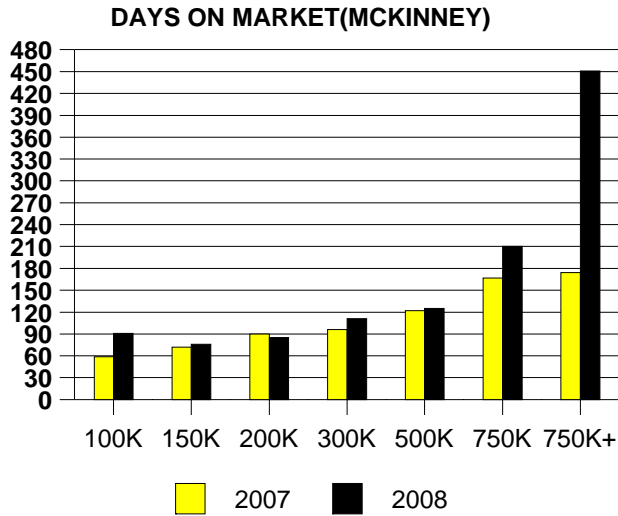


LUCAS MONTHS OF INVENTORY

2007 Inventory is Year End

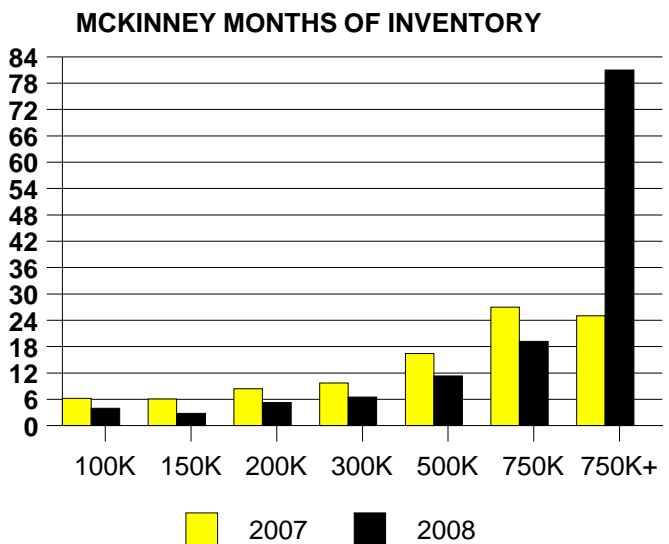
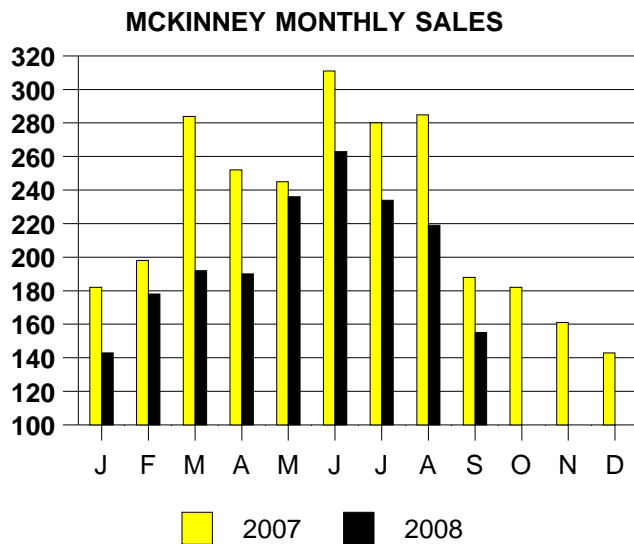


	<u>2007</u>	<u>2008</u>
Total Sold Volume	\$ 174,342,176	\$ 130,453,888
Number of Sales	763	608
Average Sales Price	\$ 228,495	\$ 214,562



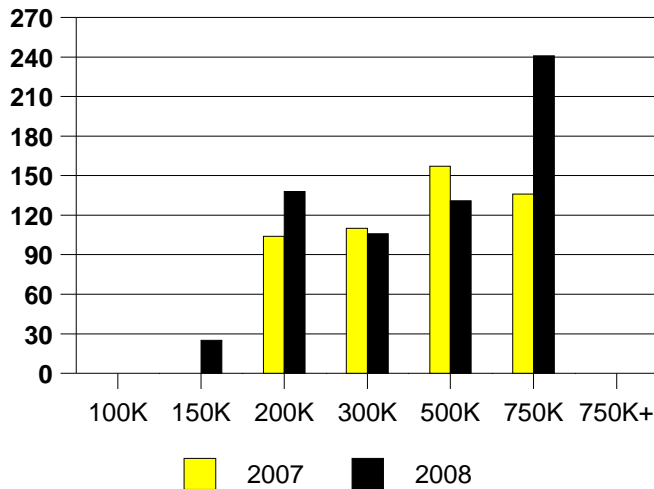
SALE/LIST PRICE RATIO

0K-100K	92.9%
101K-150K	98.4%
151K-200K	98.0%
201K-300K	96.6%
301K-500K	95.8%
501K-750K	95.6%
751K+	98.5%

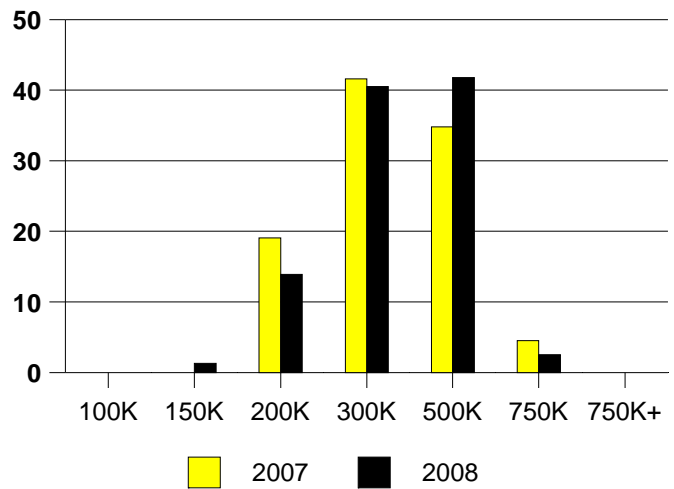


	<u>2007</u>	<u>2008</u>
Total Sold Volume	\$26,097,304	\$ 23,116,756
Number of Sales	89	79
Average Sales Price	\$ 293,228	\$ 292,617

DAYS ON THE MARKET (MURPHY)



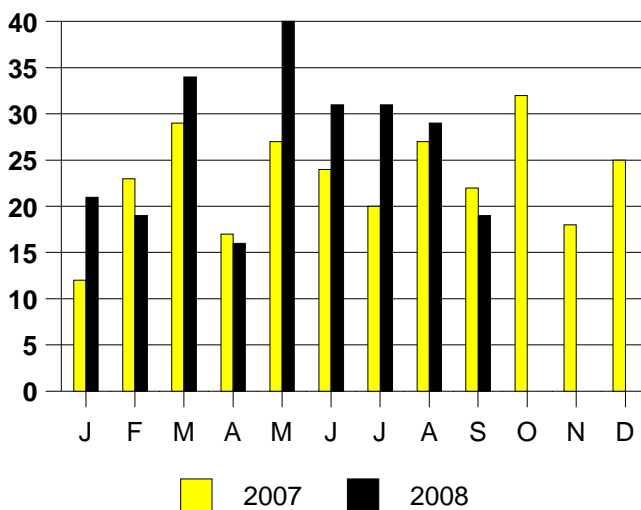
MURPHY MKT SHARE BY PRICE RANGE



SALE/LIST PRICE RATIO

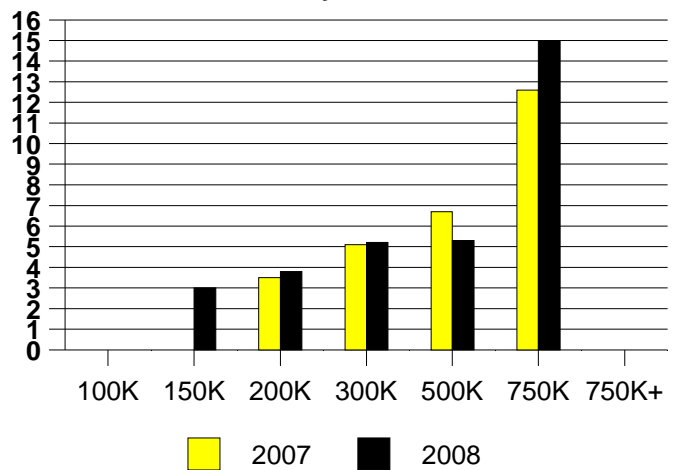
0K-100K	NONE
101K-150K	100.0%
151K-200K	96.6%
201K-300K	97.2%
301K-500K	95.1%
501K-750K	98.0%
751K+	NONE

MURPHY MONTHLY SALES



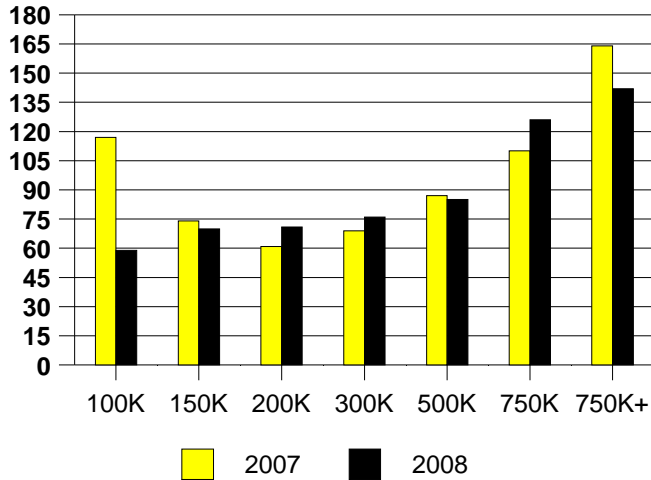
MURPHY MONTHS OF INVENTORY

2007 Inventory is Year End

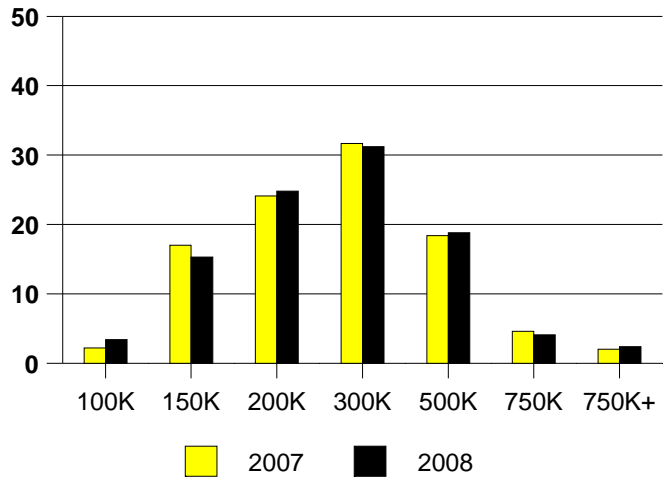


	<u>2007</u>	<u>2008</u>
Total Sold Volume	\$ 290,594,560	\$ 249,052,144
Number of Sales	1095	943
Average Sales Price	\$ 265,383	\$ 264,106

DAYS ON MARKET(PLANO)



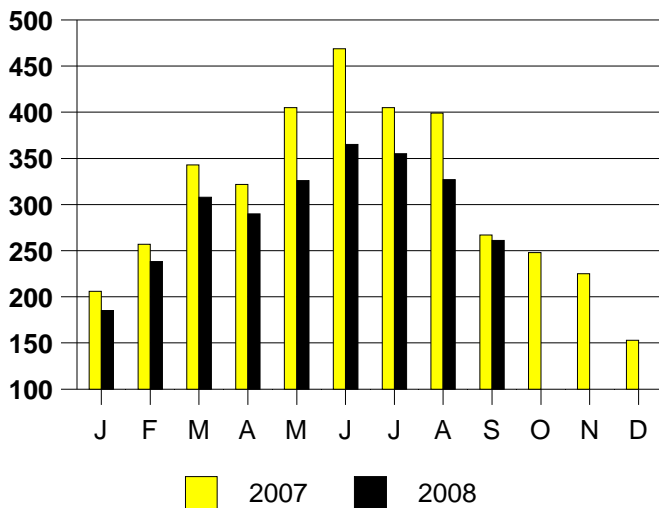
PLANO MKT SHARE BY PRICE RANGE



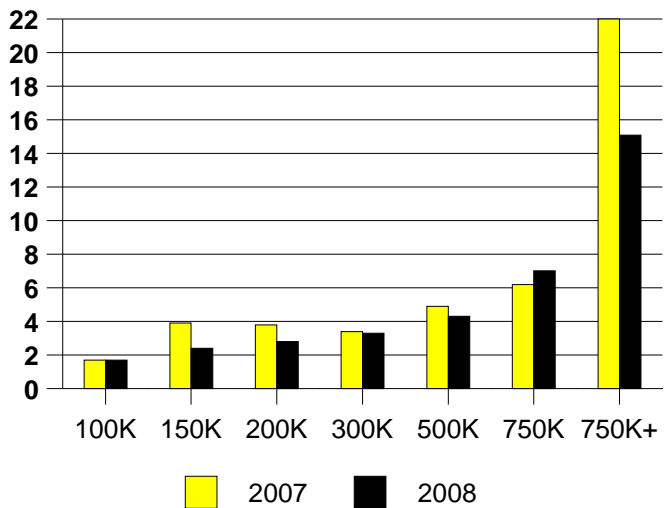
SALE/LIST PRICE RATIO

0K-100K	97.8%
101K-150K	98.2%
151K-200K	98.2%
201K-300K	97.4%
301K-500K	97.1%
501K-750K	94.9%
751K+	96.0%

PLANO MONTHLY SALES

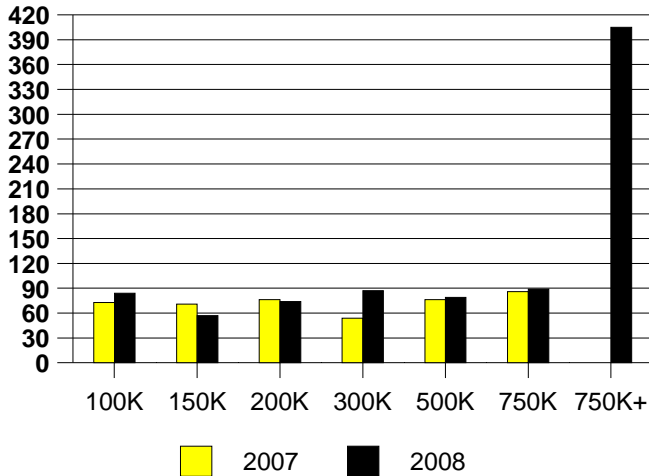


PLANO MONTHS OF INVENTORY

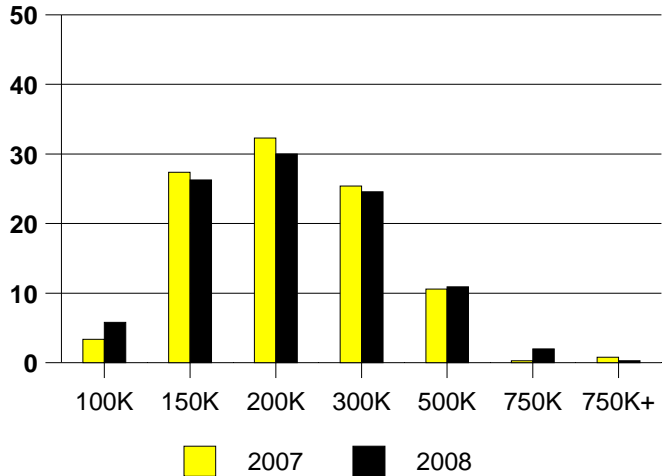


	<u>2007</u>	<u>2008</u>
Total Sold Volume	\$ 68,721,328	\$ 61,325,300
Number of Sales	350	293
Average Sales Price	\$ 196,346	\$ 209,301

DAYS ON MARKET(RICHARDSON)



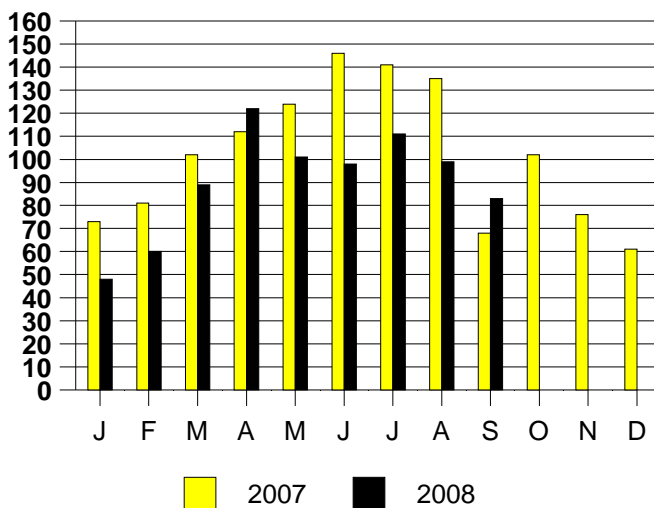
RICHARDSON MKT SHARE BY PRICE RANGE



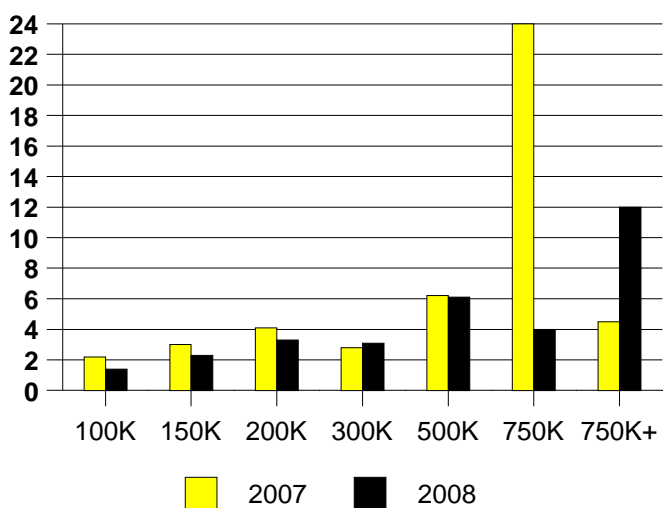
SALE/LIST PRICE RATIO

0K-100K	90.7%
101K-150K	98.1%
151K-200K	98.5%
201K-300K	97.5%
301K-500K	96.9%
501K-750K	96.6%
751K+	88.5%

RICHARDSON MONTHLY SALES

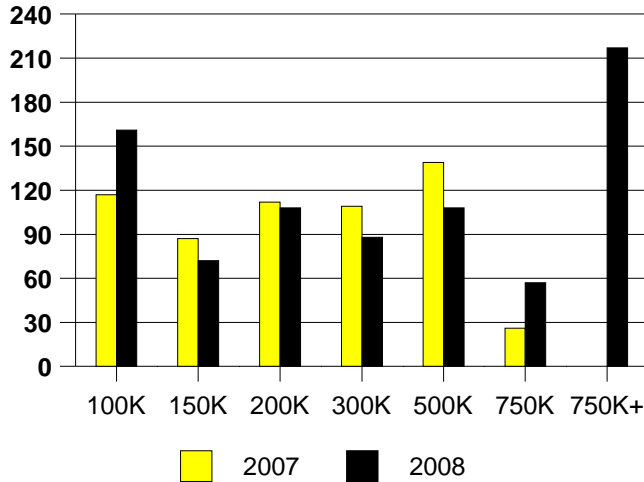


RICHARDSON MONTHS OF INVENTORY

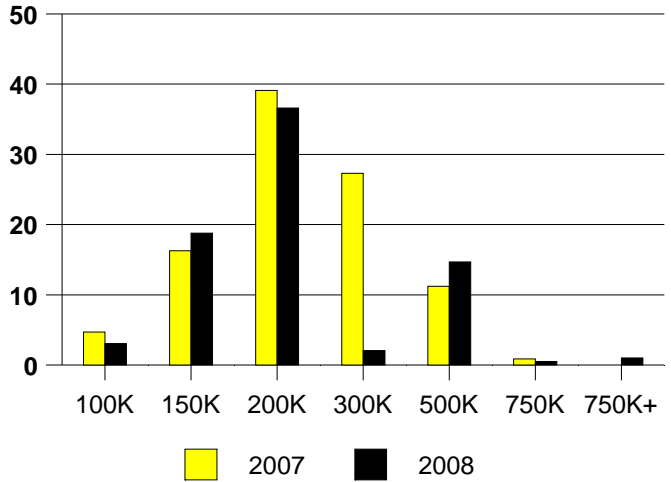


	<u>2007</u>	<u>2008</u>
Total Sold Volume	\$ 48,564,488	\$ 42,385,512
Number of Sales	233	191
Average Sales Price	\$ 208,431	\$ 221,913

DAYS ON THE MARKET (ROCKWALL)



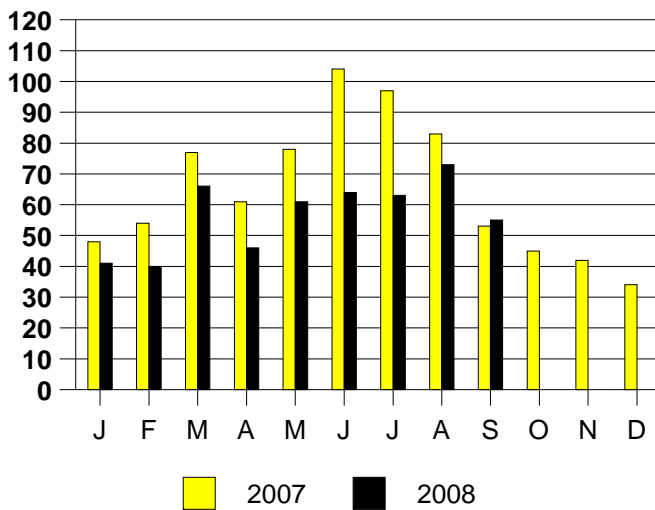
ROCKWALL MKT SHARE BY PRICE RANGE



SALE/LIST PRICE RATIO

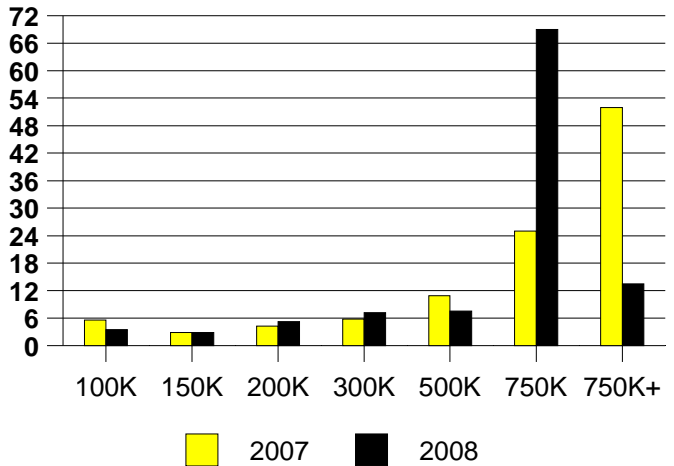
0K-100K	86.0%
101K-150K	97.9%
151K-200K	97.4%
201K-300K	97.4%
301K-500K	96.1%
501K-750K	96.6%
751K+	97.1%

ROCKWALL MONTHLY SALES



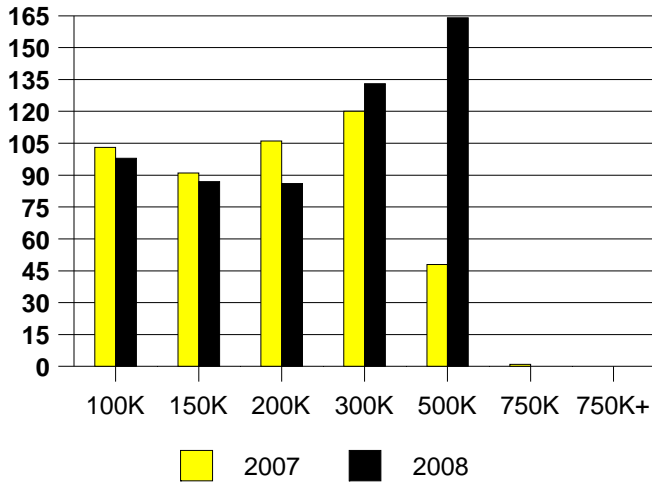
ROCKWALL MONTHS OF INVENTORY

2007 Inventory Is Year End

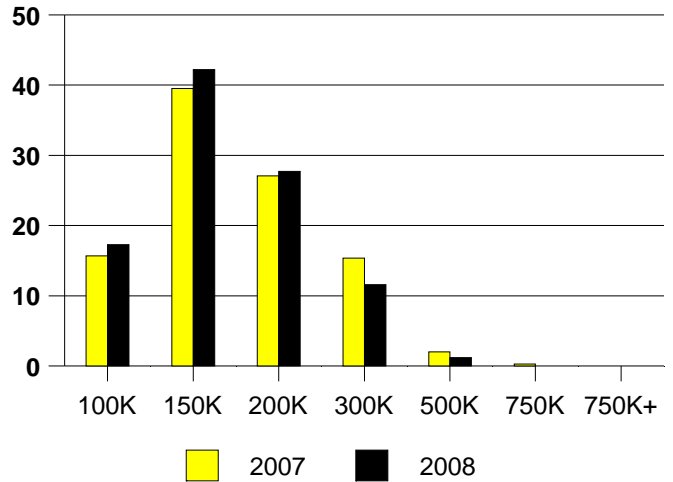


	<u>2007</u>	<u>2008</u>
Total Sold Volume	\$ 47,074,216	\$ 36,601,808
Number of Sales	299	249
Average Sales Price	\$ 157,438	\$ 146,995

DAYS ON THE MARKET (ROWLETT)



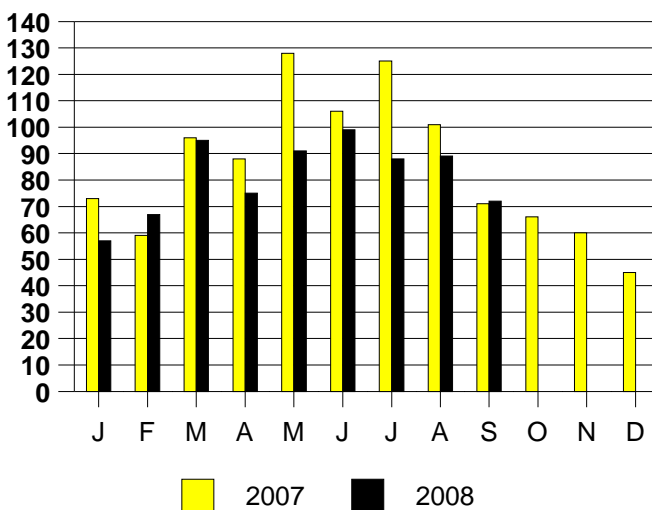
ROWLETT MKT SHARE BY PRICE RANGE



SALE/LIST PRICE RATIO

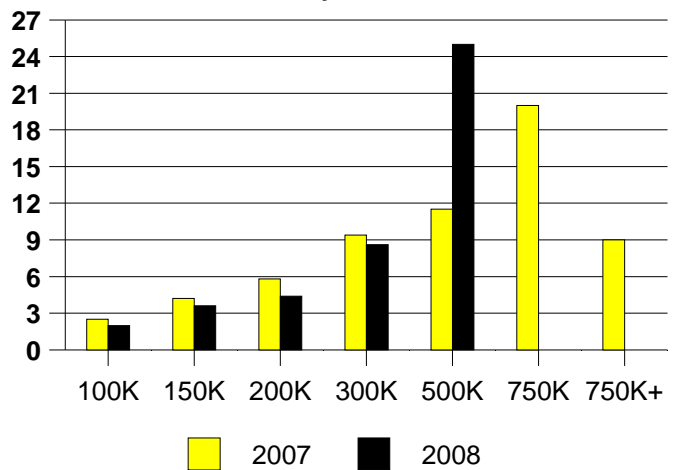
0K-100K	95.9%
101K-150K	99.4%
151K-200K	97.9%
201K-300K	98.1%
301K-500K	94.1%
501K-750K	NONE
751K+	NONE

ROWLETT MONTHLY SALES



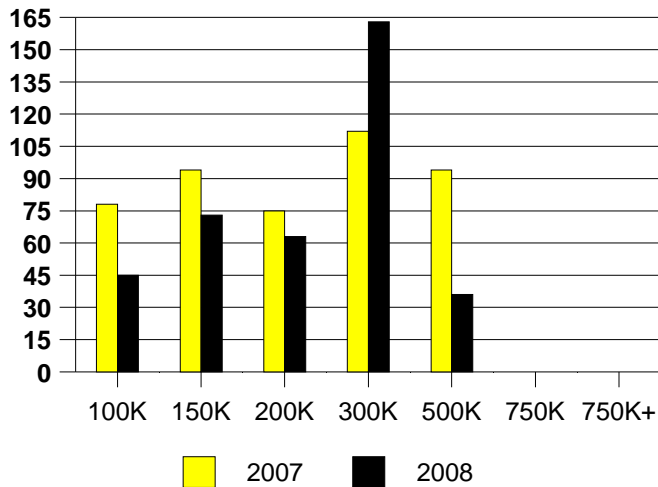
ROWLETT MONTHS OF INVENTORY

2007 Inventory is Year End

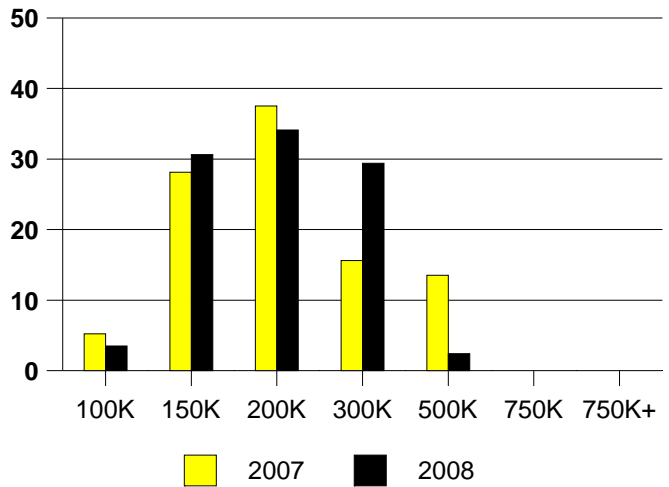


	<u>2007</u>	<u>2008</u>
Total Sold Volume	\$ 18,637,822	\$ 15,538,018
Number of Sales	96	85
Average Sales Price	\$ 194,143	\$ 182,800

DAYS ON THE MARKET (SACHSE)



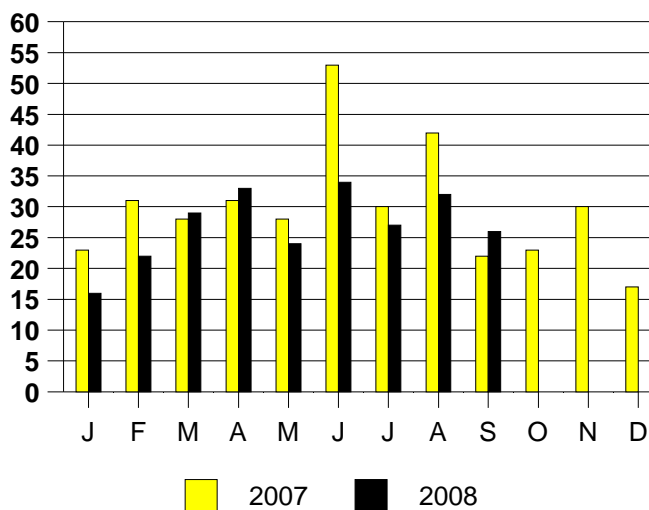
SACHSE MKT SHARE BY PRICE RANGE



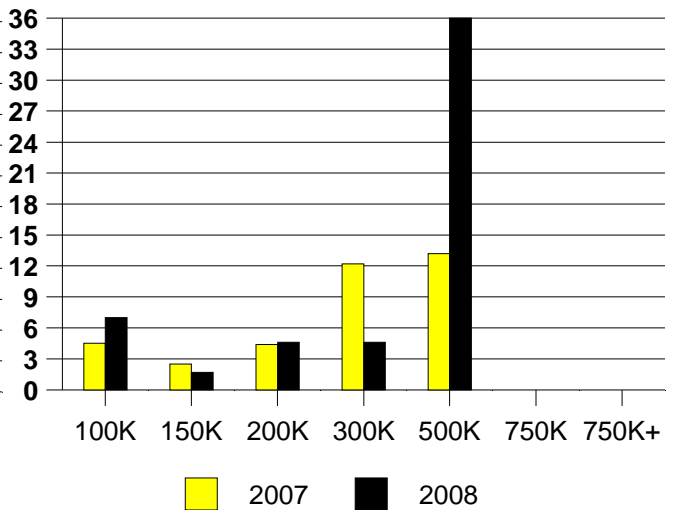
SALE/LIST PRICE RATIO

0K-100K	103.9%
101K-150K	97.7%
151K-200K	99.4%
201K-300K	94.8%
301K-500K	102.3%
501K-750K	NONE
751K+	NONE

SACHSE MONTHLY SALES

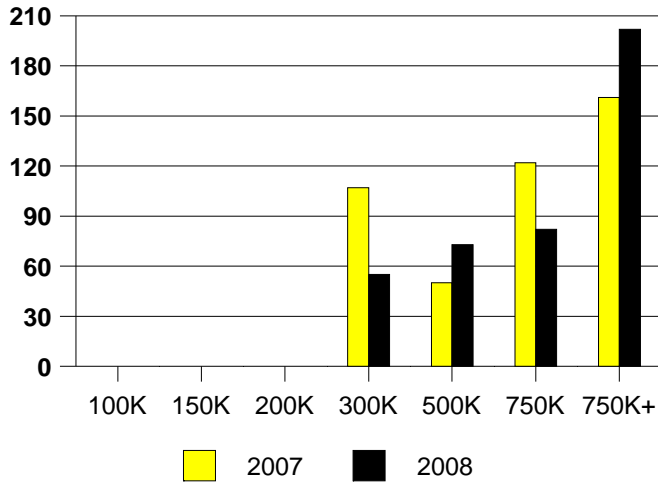


SACHSE MONTHS OF INVENTORY

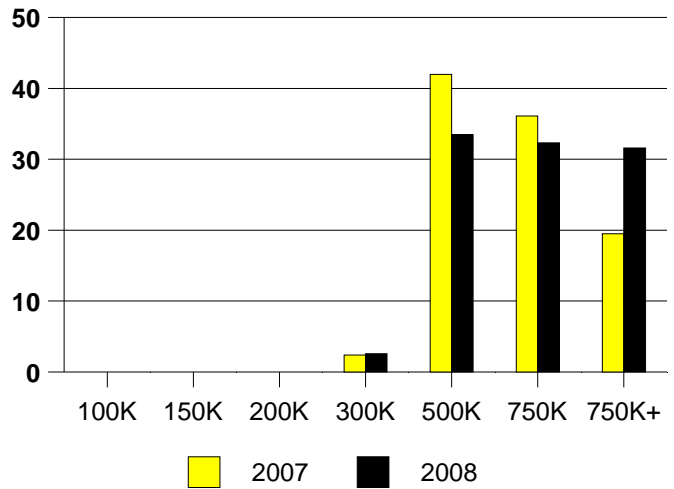


	<u>2007</u>	<u>2008</u>
Total Sold Volume	\$ 103,741,416	\$ 106,505,600
Number of Sales	169	155
Average Sales Price	\$ 613,854	\$ 687,132

DAYS ON THE MARKET (SOUTHLAKE)



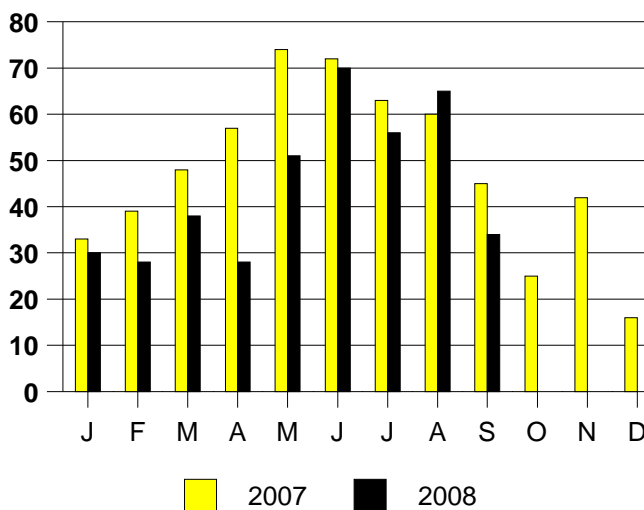
SOUTHLAKE MKT SHARE BY PRICE RANGE



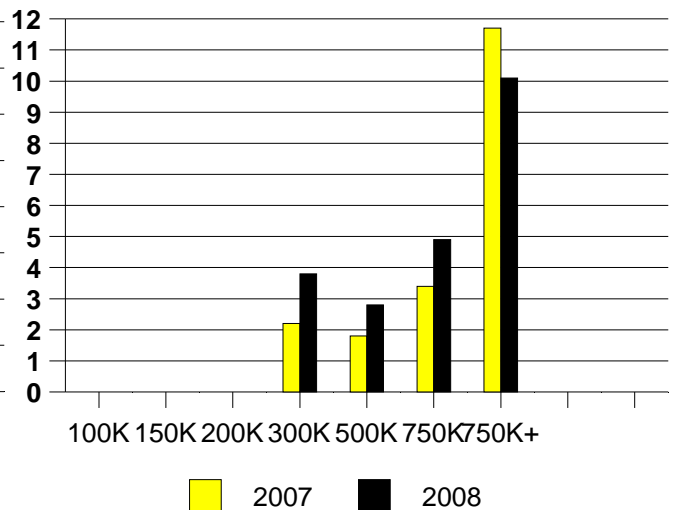
SALE/LIST PRICE RATIO

0K-100K	NONE
101K-150K	NONE
151K-200K	NONE
201K-300K	91.8%
301K-500K	97.7%
501K-750K	97.0%
751K+	96.3%

SOUTHLAKE MONTHLY SALES

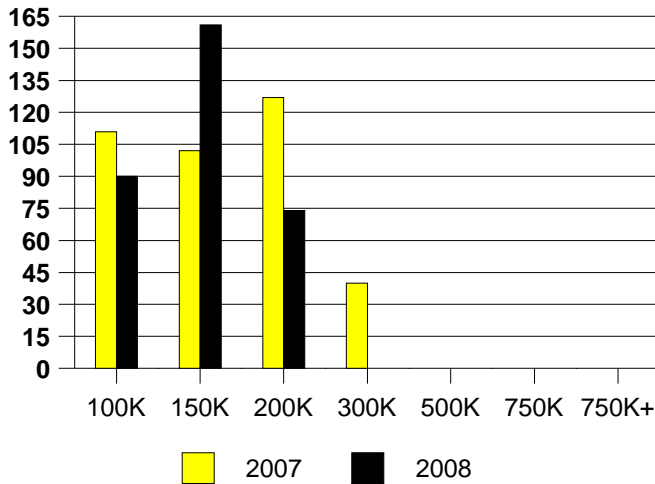


SOUTHLAKE MONTHS OF INVENTORY

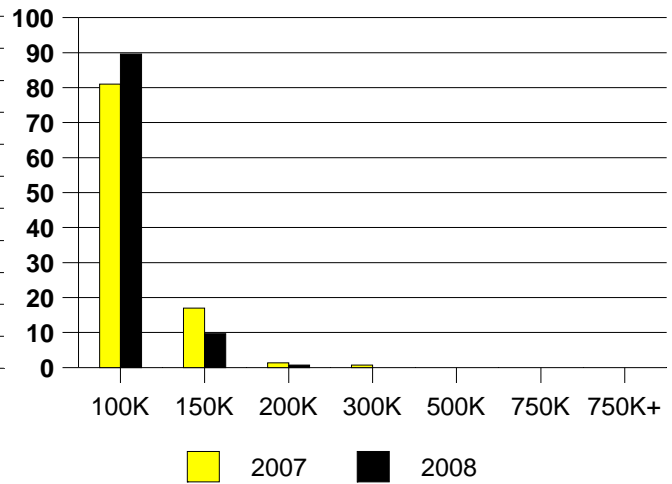


	<u>2007</u>	<u>2008</u>
Total Sold Volume	\$11,164,515	\$ 9,008,137
Number of Sales	147	144
Average Sales Price	\$ 75,949	\$ 62,556

DAYS ON THE MARKET (OAK CLIFF)



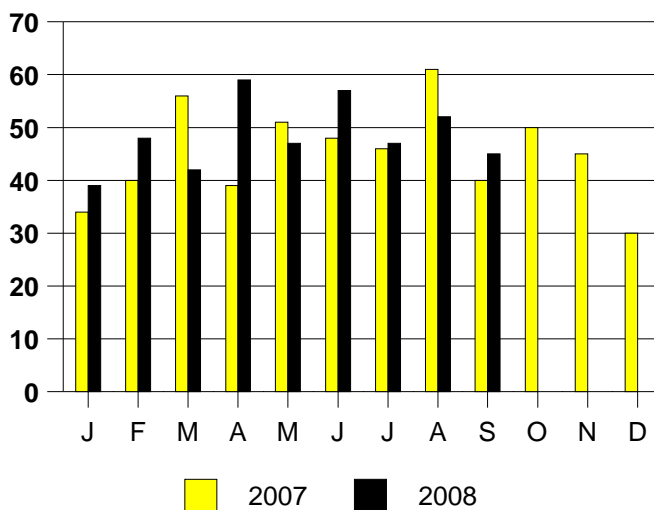
OAK CLIFF MKT SHARE BY PRICE RANGE



SALE/LIST PRICE RATIO

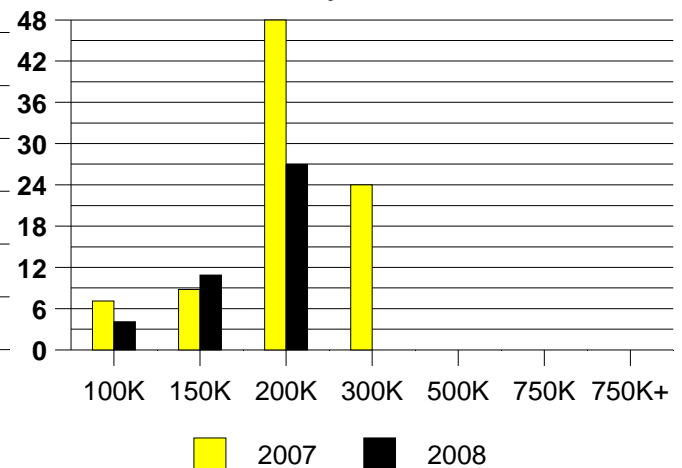
0K-100K	96.9%
101K-150K	103.7%
151K-200K	96.9%
201K-300K	NONE
301K-500K	NONE
501K-750K	NONE
751K+	NONE

OAK CLIFF MONTHLY SALES

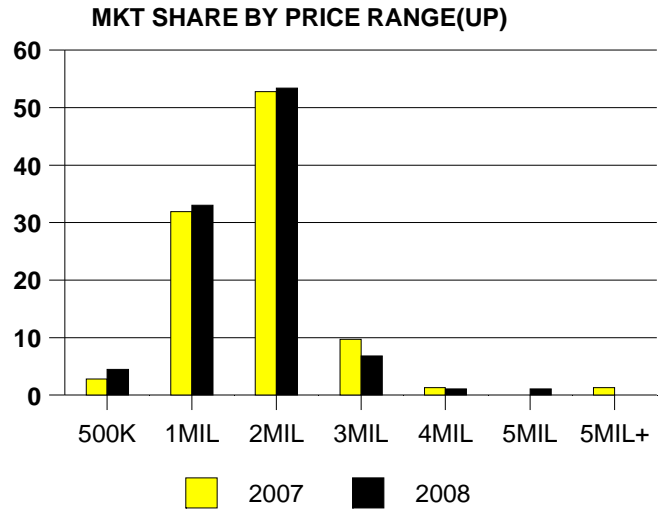
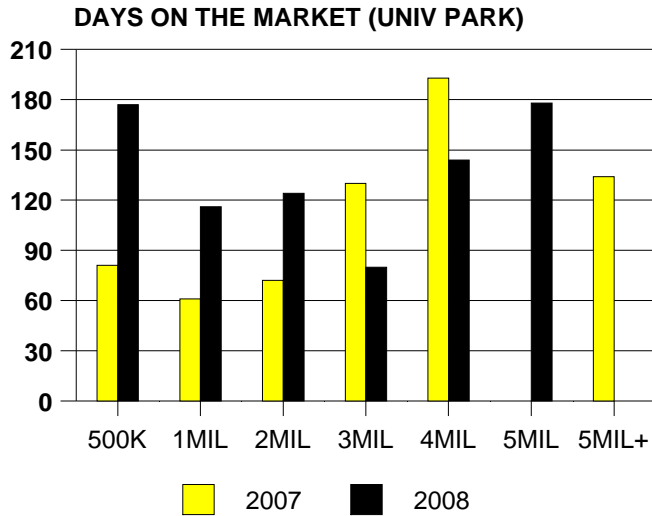


OAK CLIFF MONTHS OF INVENTORY

2007 Inventory is Year End

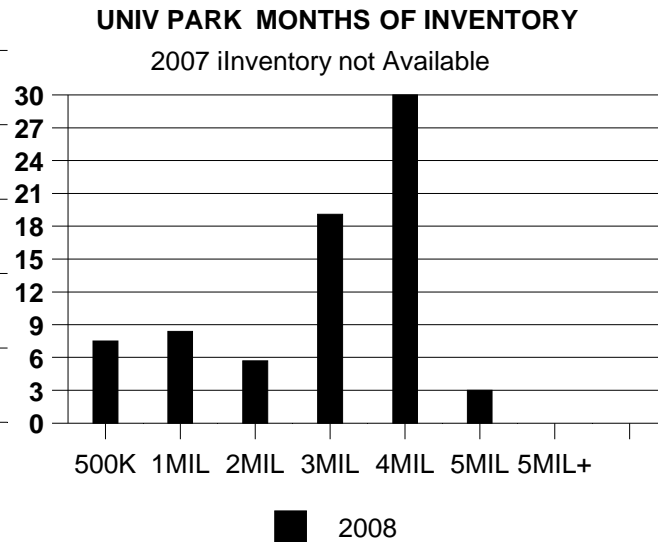
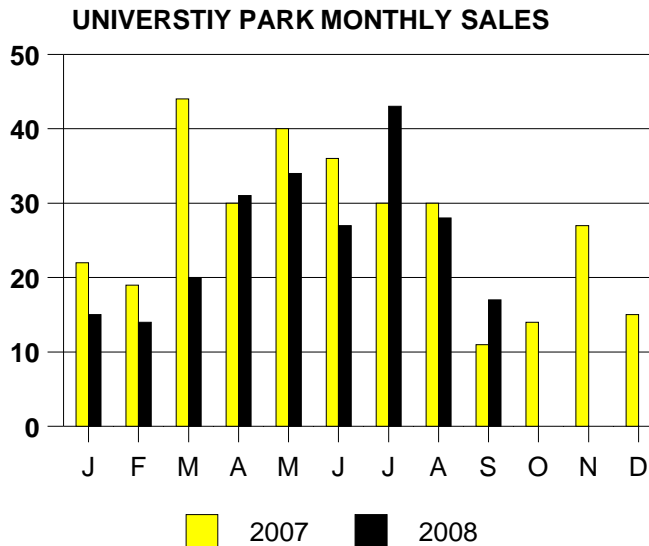


	<u>2007</u>	<u>2008</u>
Total Sold Volume	\$ 98,901,600	\$ 110,605,456
Number of Sales	72	88
Average Sales Price	\$ 1,373,633	\$ 1,256,880



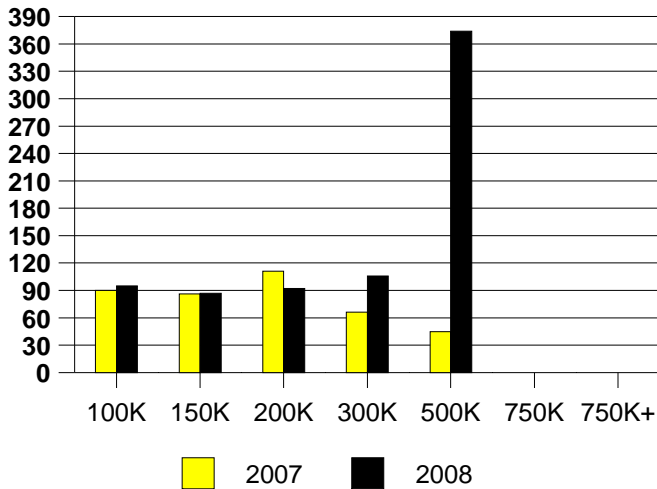
SALE/LIST PRICE RATIO

0K-500K	98.2%
501K-1MIL	96.2%
1MIL-2MIL	97.0%
2MIL-3MIL	98.0%
3MIL-4MIL	100.0%
4MIL-5MIL	100.0%
5MIL+	NONE

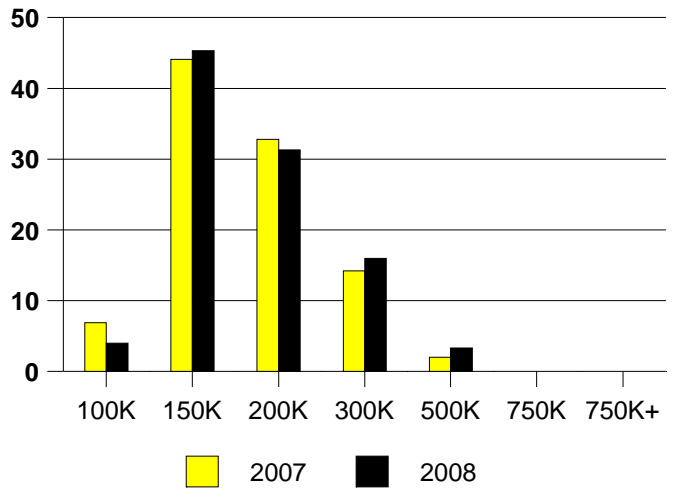


	<u>2007</u>	<u>2008</u>
Total Sold Volume	\$ 32,306,940	\$ 24,644,456
Number of Sales	204	150
Average Sales Price	\$ 158,367	\$ 164,296

DAYS ON THE MARKET (WYLIE)



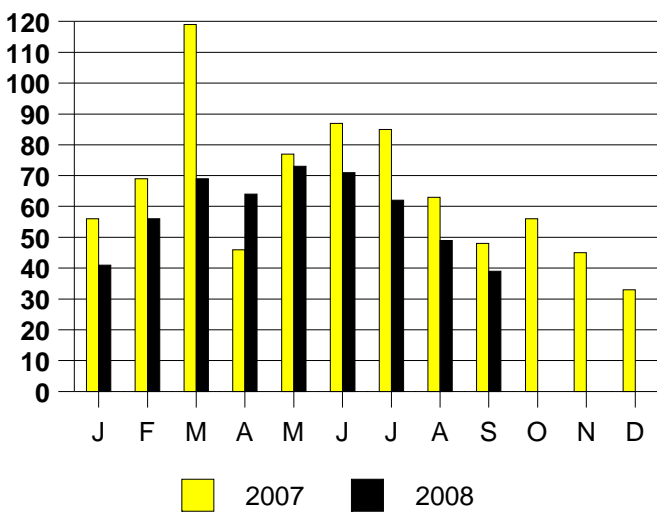
WYLIE MKT SHARE BY PRICE RANGE



SALE/LIST PRICE RATIO

0K-100K	83.1%
101K-150K	98.1%
151K-200K	98.6%
201K-300K	96.0%
301K-500K	96.6%
501K-750K	NONE
751K+	NONE

WYLIE MONTHLY SALES



WYLIE MONTHS OF INVENTORY

