

TWO BEDROOM – TWO & ONE THIRD BATHS

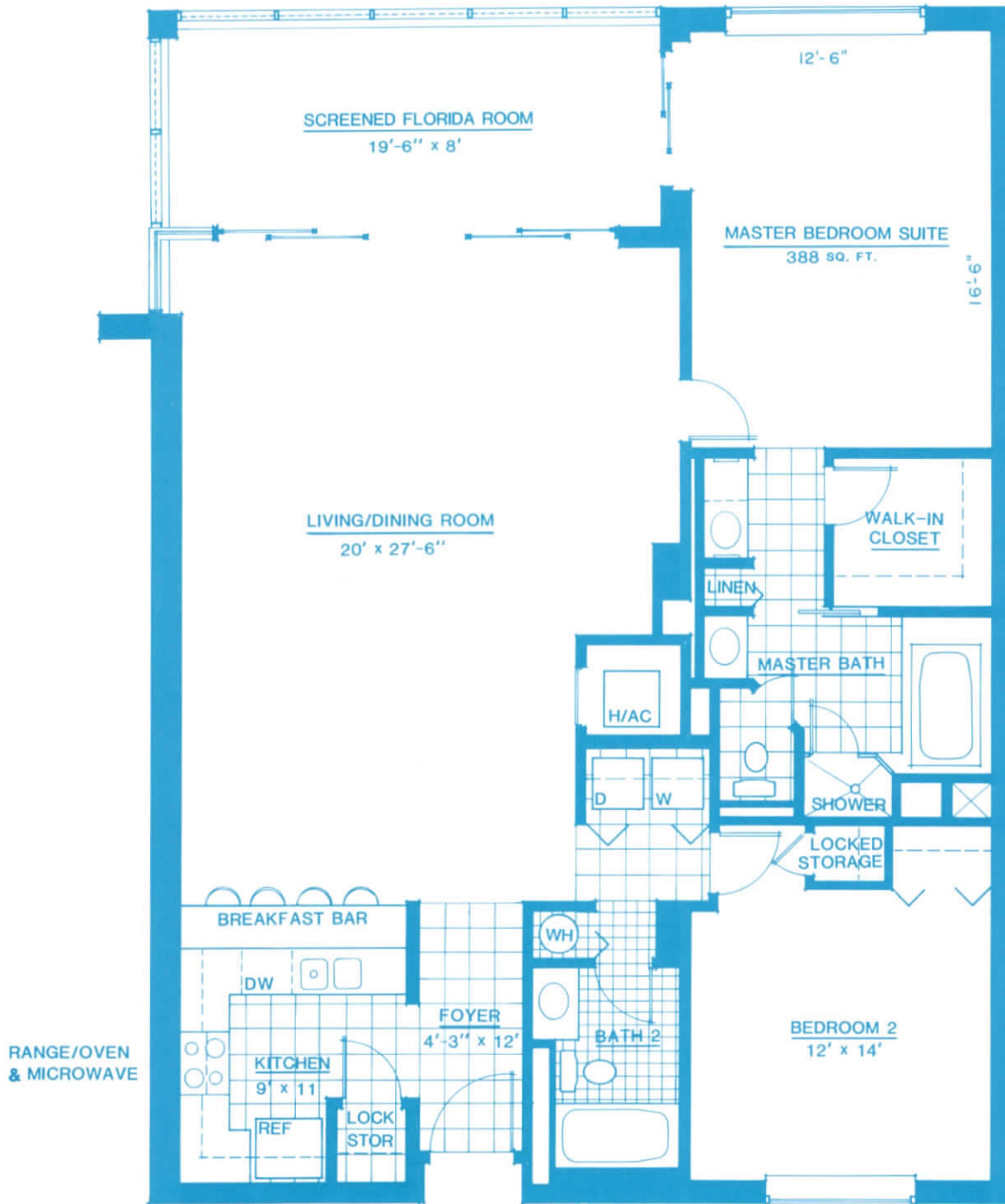
'A' FLOOR PLAN

TOTAL LIVING AREA: 1601 SQ. FT.

A/C AREA: 1445 SQ. FT.

DIMENSIONS & CALCULATIONS ARE APPROXIMATE





TWO BEDROOM – TWO & ONE THIRD BATHS
'A' FLOOR PLAN – CORNER UNIT

TOTAL LIVING AREA: 1601 SQ. FT.

A/C AREA: 1445 SQ.FT.

DIMENSIONS & CALCULATIONS ARE APPROXIMATE





SCREENED FLORIDA ROOM
32' x 8'

WRAPAROUND
GLASS CORNER

SUN DECK
8' x 17'

LIVING / DINING ROOM
19'-4" x 34'

RANGE /
OVEN &
MICROWAVE

BREAKFAST BAR

KITCHEN
10'-9" x 9'-8"
REF.
DW

FOYER
6' x 9'

LOCKED
STORAGE
6' x 7'

BEDROOM / DEN
9'-6" x 14'-3"

BEDROOM 2
12' x 14'-3"

HALL
14' x 13'

CLOS.

H/A/C

LINEN

BATH &
D

SHOWER

MASTER BATH

DRESSING
AREA

WALK-IN
CLOSET
6'-6" x 10'-5"

MASTER BEDROOM SUITE
477 SQ.FT.

16'-6"

17'-6"

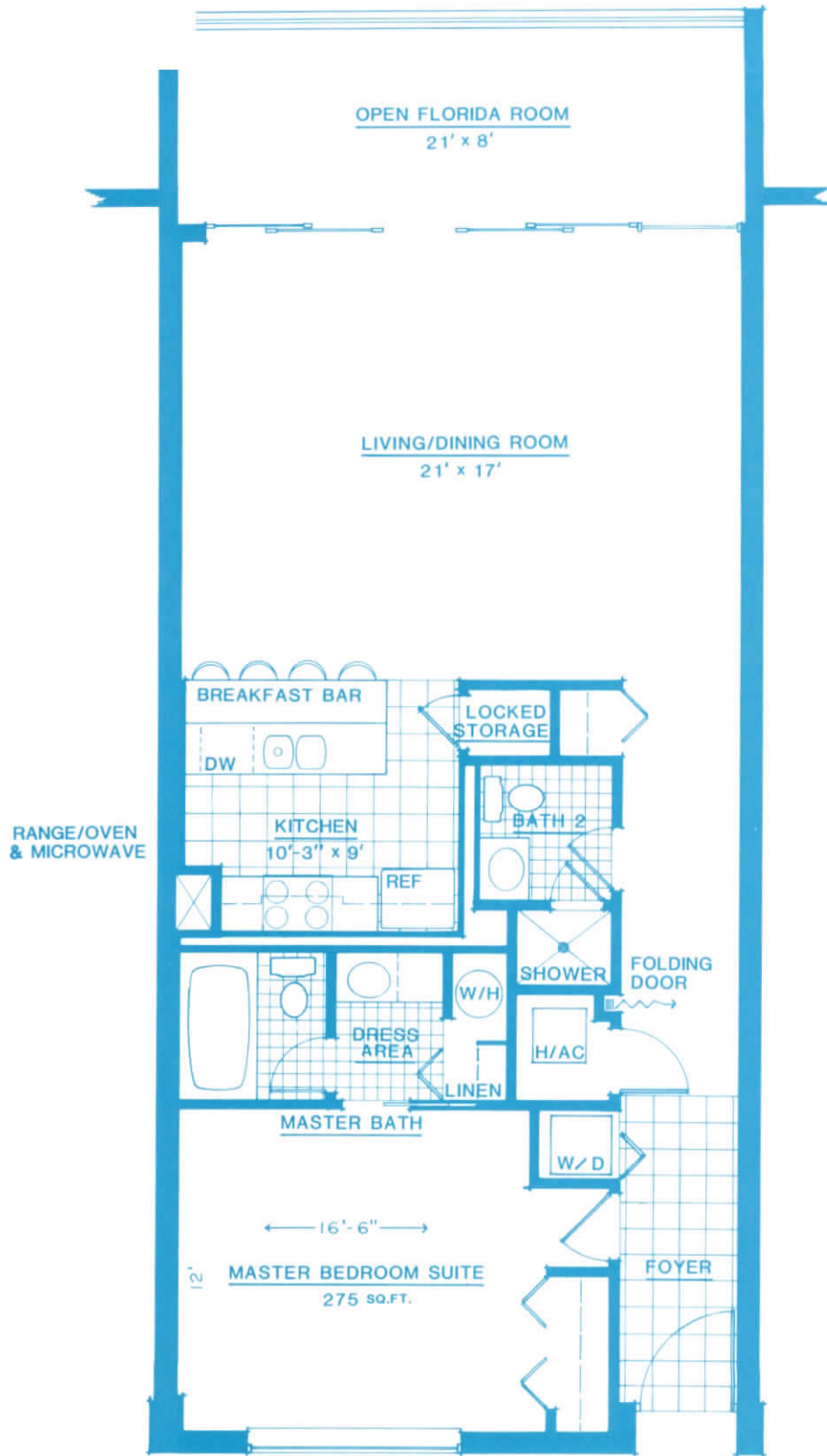
THREE BEDROOM (or DEN) – TWO & ONE THIRD BATHS
‘B’ FLOOR PLAN – CORNER UNIT

TOTAL LIVING AREA : 2269 SQ. FT.

A/C AREA : 1877 SQ. FT.

DIMENSIONS & CALCULATIONS ARE APPROXIMATE

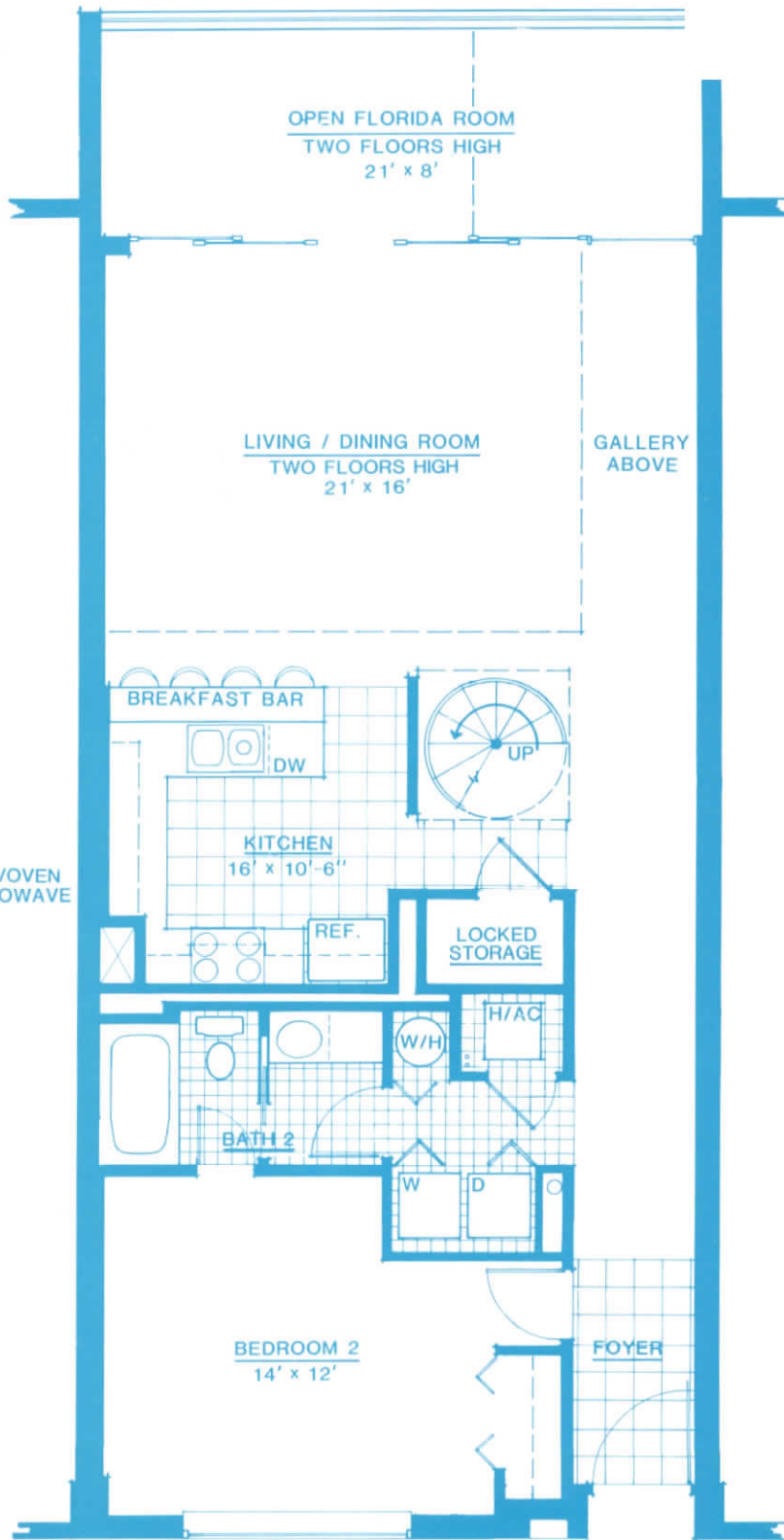




ONE BEDROOM SUITE – TWO BATHS
'C' FLOOR PLAN

TOTAL LIVING AREA: 1188 SQ. FT.
A/C AREA : 1020 SQ. FT.
DIMENSIONS & CALCULATIONS ARE APPROXIMATE





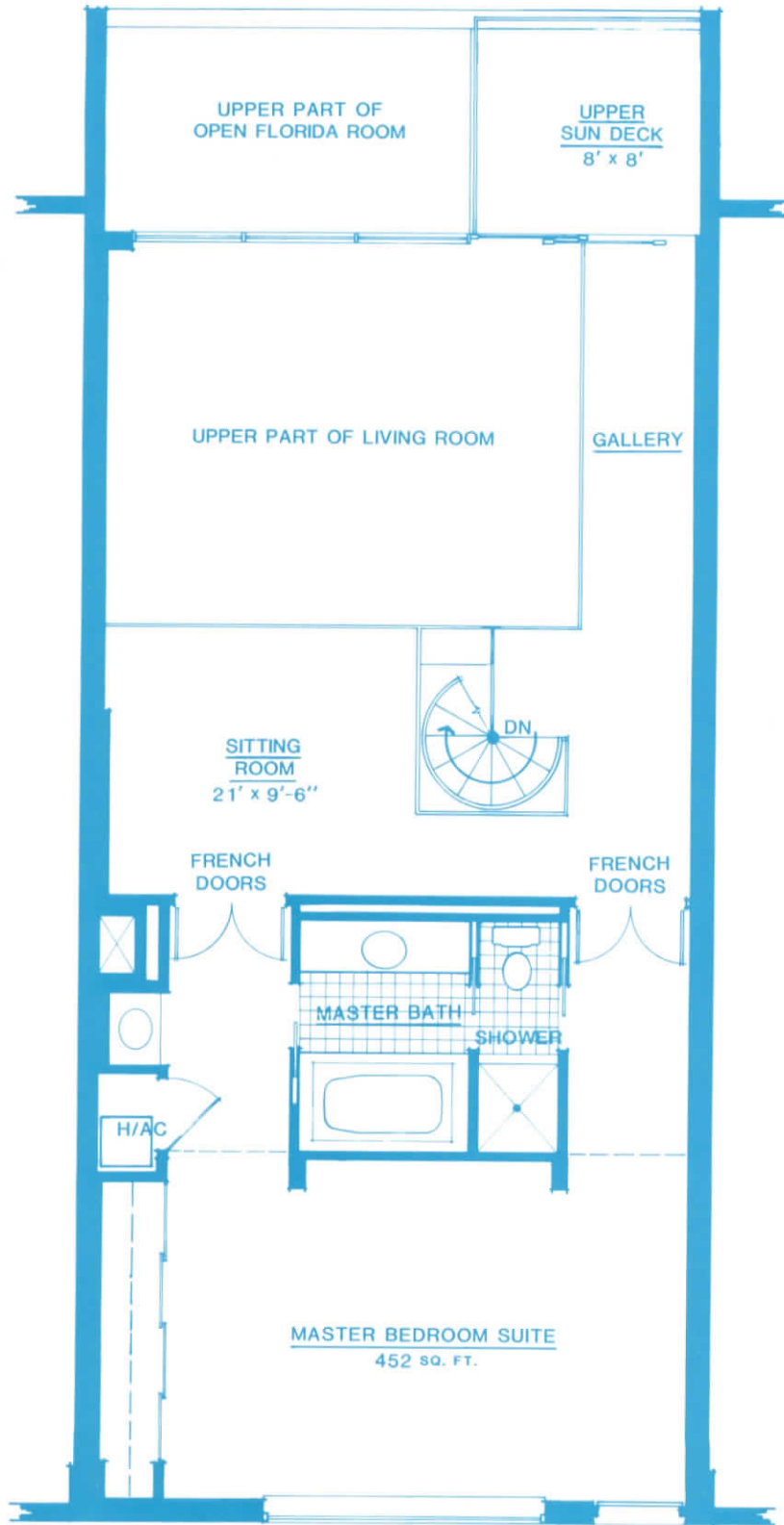
TWO LEVEL TOWNHOUSE – TWO & ONE THIRD BATHS
'D' FLOOR PLAN – FIRST FLOOR

TOTAL LIVING AREA: 2376 SQ. FT.

A/C AREA: 2040 SQ.FT.

DIMENSIONS & CALCULATIONS ARE APPROXIMATE





TWO LEVEL TOWNHOUSE
'D' FLOOR PLAN - SECOND FLOOR

DIMENSIONS & CALCULATIONS ARE APPROXIMATE

