

# Wilmington NC Residential Market Report



## Housing Report

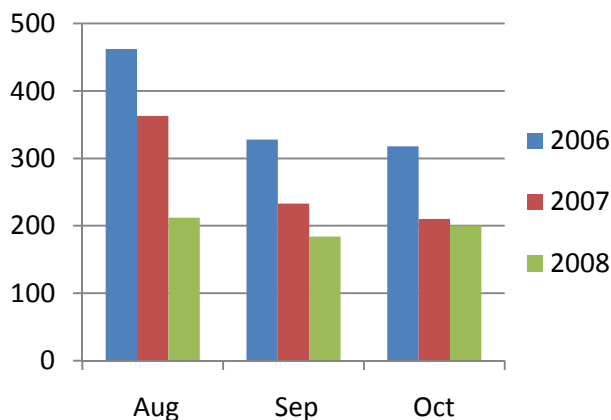
October 2008

Monthly Solds

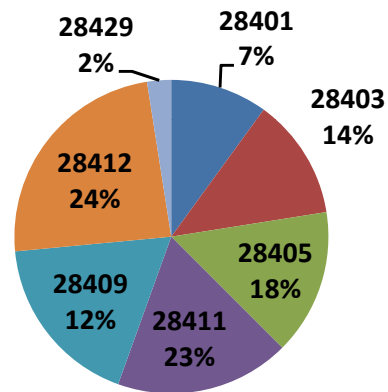
created by *Walt Dowdy*

zip code	Number of Solds			Avg Sale Price			Avg DOM		
	2008	2007	% change	2008	2007	% change	2008	2007	% change
28401	20	14	30%	\$178,723	\$255,821	-30%	143	96	33%
28403	25	30	-17%	\$230,001	\$228,496	1%	81	70	14%
28405	30	37	-19%	\$288,131	\$552,988	-48%	133	116	13%
28411	36	50	-28%	\$271,514	\$365,213	-26%	81	88	-9%
28409	36	25	31%	\$411,153	\$299,836	27%	130	68	48%
28412	48	50	-4%	\$221,934	\$233,051	-5%	91	76	16%
28429	5	4	20%	\$136,600	\$148,625	-8%	139	68	51%
<b>Total</b>	<b>200</b>	<b>210</b>	<b>-5%</b>	<b>\$269,401</b>	<b>\$286,722</b>	<b>-6%</b>	<b>108</b>	<b>82</b>	<b>24%</b>

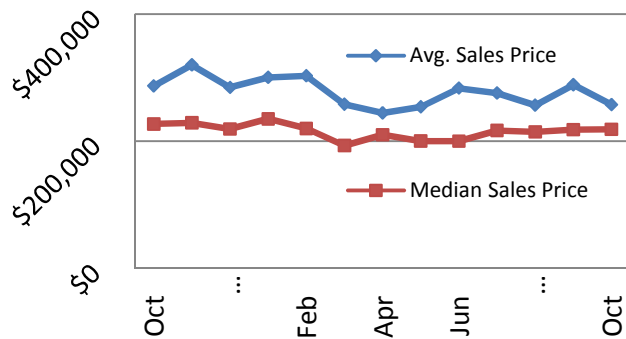
Number of Homes Sold



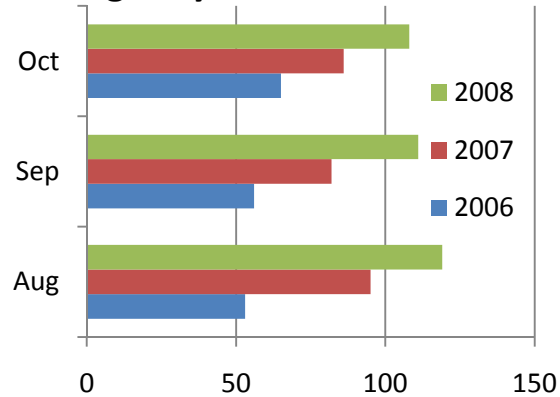
Market Share by Zip Code



Sales Price: Average & Median



Avg. Days on the Market



NOTE: Data is collected from the Wilmington Regional Association of Realtors (WRAR) Multiple Listing Service and reflects only New Hanover County, excluding local beaches.