

# Wilmington NC Residential Market Report



## Housing Report

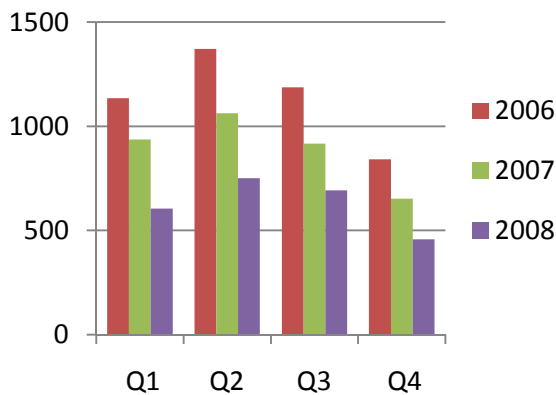
4th Quarter | 2008

created by *Walt Dowdy*

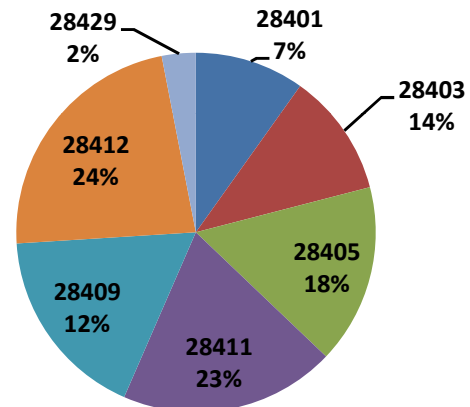
Quarterly Solds    **october - december**

| zip code     | Number of Solds |            |             | Avg Sale Price   |                  |             | Avg DOM    |           |            |
|--------------|-----------------|------------|-------------|------------------|------------------|-------------|------------|-----------|------------|
|              | 2008            | 2007       | % change    | 2008             | 2007             | % change    | 2008       | 2007      | % change   |
| 28401        | 45              | 47         | -4%         | \$173,229        | \$226,400        | -31%        | 149        | 91        | 39%        |
| 28403        | 51              | 83         | -39%        | \$239,948        | \$243,708        | -2%         | 119        | 96        | 19%        |
| 28405        | 74              | 116        | -36%        | \$309,050        | \$431,194        | -28%        | 117        | 99        | 15%        |
| 28411        | 89              | 138        | -36%        | \$266,468        | \$334,302        | -20%        | 110        | 99        | 10%        |
| 28409        | 80              | 98         | -18%        | \$329,333        | \$314,587        | 5%          | 138        | 99        | 28%        |
| 28412        | 105             | 160        | -34%        | \$227,695        | \$223,940        | 2%          | 113        | 83        | 27%        |
| 28429        | 14              | 8          | 43%         | \$177,257        | \$154,519        | 15%         | 106        | 116       | -9%        |
| <b>Total</b> | <b>458</b>      | <b>652</b> | <b>-30%</b> | <b>\$260,599</b> | <b>\$299,553</b> | <b>-13%</b> | <b>121</b> | <b>96</b> | <b>21%</b> |

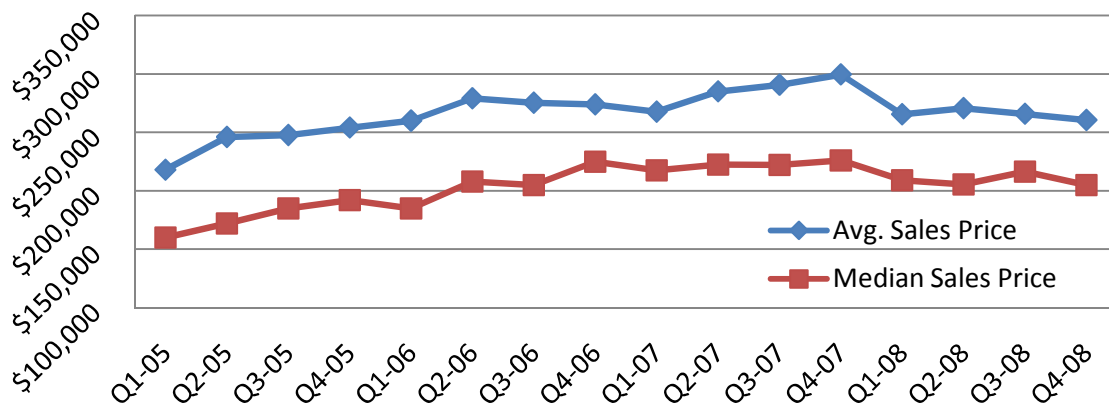
### # of Homes Sold



### Market Share by Zip Code



### Sales Price: Average & Median



NOTE: Data is collected from the Wilmington Regional Association of Realtors (WRAR) Multiple Listing Service and reflects only New Hanover County, excluding local beaches and may contain personal input errors.