

Wilmington NC Residential Market Report



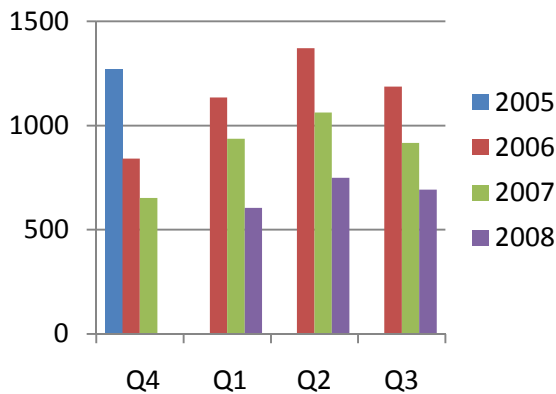
Housing Report Quarter 3 2008

Quarterly Solds

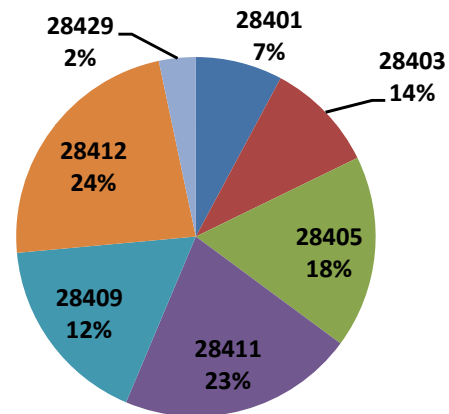
july - september

zip code	Number of Solds			Avg Sale Price			Avg DOM		
	2008	2007	% change	2008	2007	% change	2008	2007	% change
28401	54	70	-23%	\$223,374	\$171,547	23%	121	71	41%
28403	69	101	-32%	\$254,668	\$231,828	9%	119	88	26%
28405	120	164	-27%	\$305,700	\$343,475	-11%	105	110	-5%
28411	147	246	-40%	\$285,618	\$333,648	-14%	115	79	31%
28409	119	140	-15%	\$329,576	\$333,763	-1%	124	84	32%
28412	160	184	-13%	\$203,902	\$239,223	-15%	132	95	28%
28429	23	15	35%	\$168,326	\$203,147	-17%	113	97	14%
Total	692	1187	-42%	\$265,924	\$290,753	-9%	119	96	19%

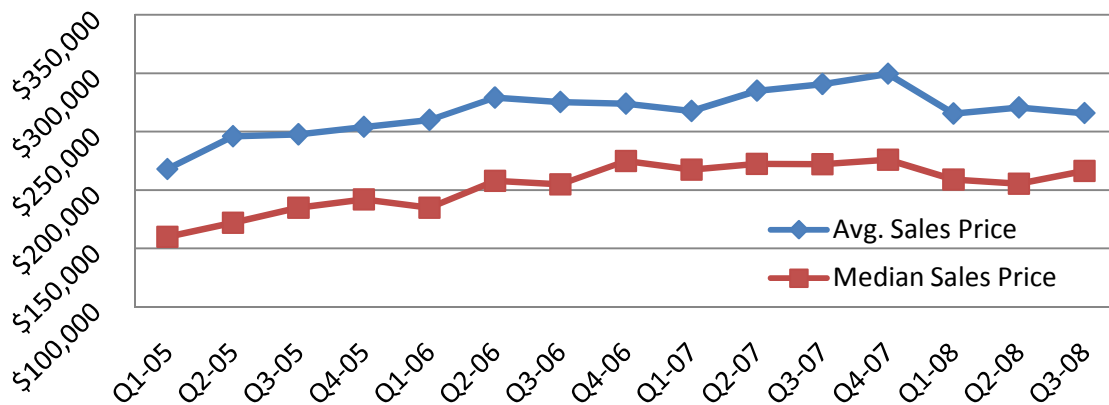
of Homes Sold



Market Share by Zip Code



Sales Price: Average & Median



NOTE: Data is collected from the Wilmington Regional Association of Realtors (WRAR) Multiple Listing Service and reflects only New Hanover County, excluding local beaches.