

Wilmington NC

Residential Market Report



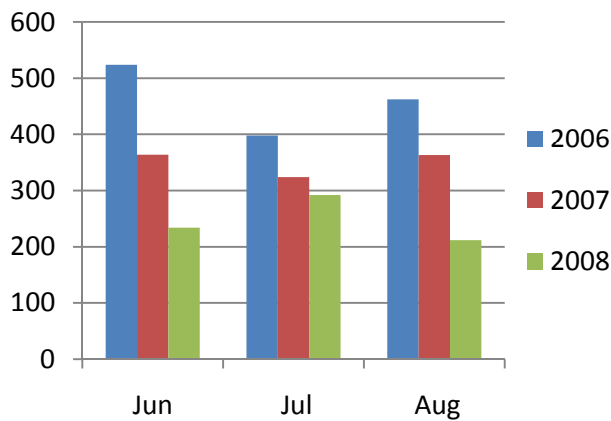
Housing Report

August 2008

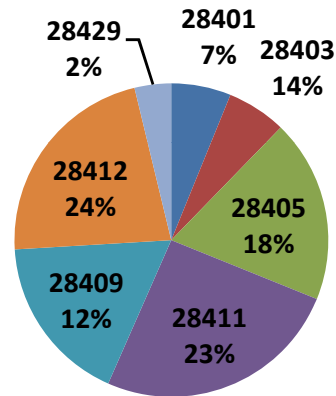
Monthly Solds

zip code	Number of Solds			Avg Sale Price			Avg DOM		
	2008	2007	% change	2008	2007	% change	2008	2007	% change
28401	13	24	-46%	\$301,146	\$164,604	45%	133	77	42%
28403	13	35	-63%	\$326,046	\$236,665	27%	120	112	7%
28405	40	62	-35%	\$370,372	\$310,300	16%	80	112	-40%
28411	54	100	-46%	\$270,332	\$331,067	-22%	126	75	40%
28409	37	58	-36%	\$356,832	\$344,357	3%	139	93	33%
28412	47	80	-41%	\$191,436	\$215,856	-13%	124	106	15%
28429	8	4	50%	\$178,713	\$230,125	-22%	125	113	10%
Total	212	363	-42%	\$288,662	\$284,899	1%	119	95	20%

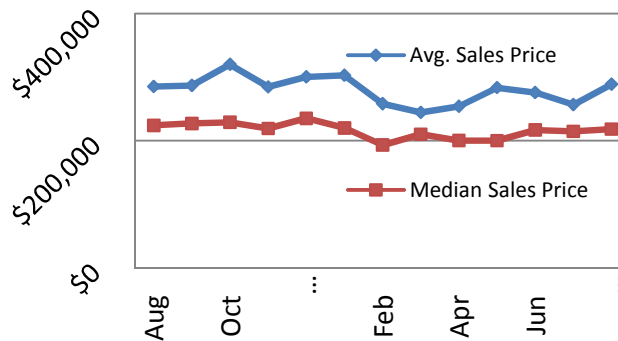
Number of Homes Sold



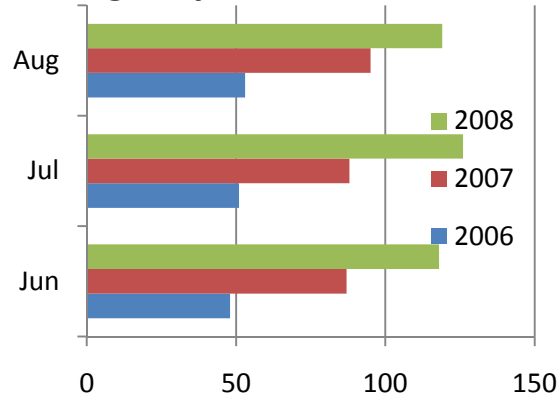
Market Share by Zip Code



Sales Price: Average & Median



Avg. Days on the Market



NOTE: Data is collected from the Wilmington Regional Association of Realtors (WRAR) Multiple Listing Service and reflects only New Hanover County, excluding local beaches.