

Wilmington NC Residential Market Report



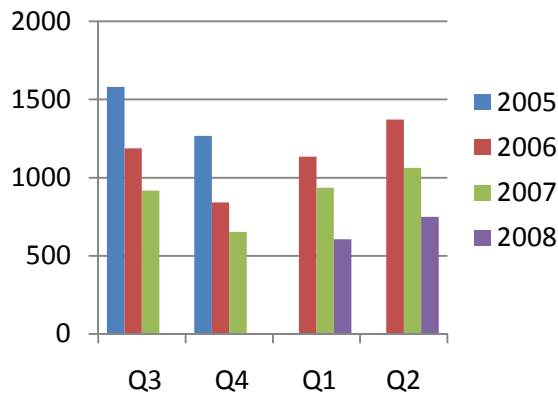
Housing Report Quarter 2 2008

Quarterly Solds

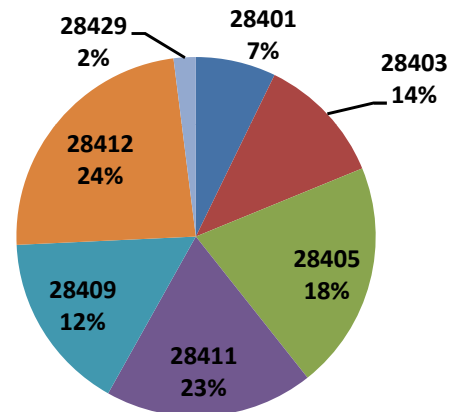
april - june

zip code	Number of Solds			Avg Sale Price			Avg DOM		
	2008	2007	% change	2007	2007	% change	2007	2007	% change
28401	54	121	-124%	\$161,205	\$188,779	-17%	148	86	42%
28403	87	142	-63%	\$244,838	\$253,599	-4%	103	84	18%
28405	154	175	-14%	\$270,793	\$355,715	-31%	110	112	-2%
28411	141	229	-62%	\$375,562	\$328,637	12%	108	88	19%
28409	121	161	-33%	\$305,916	\$334,350	-9%	110	95	14%
28412	178	209	-17%	\$218,307	\$231,861	-6%	111	82	26%
28429	15	26	-73%	\$167,483	\$144,995	13%	90	62	31%
Total	750	1063	-42%	\$279,770	\$285,052	-2%	111	91	18%

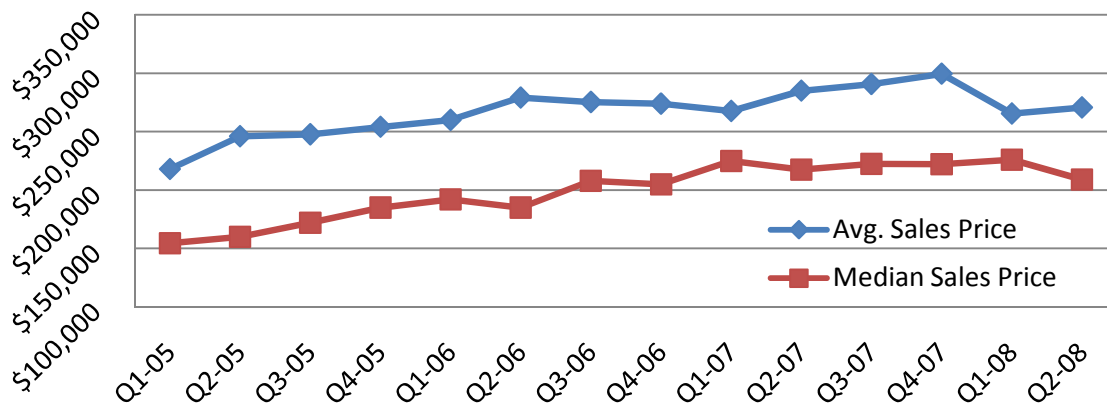
of Homes Sold



Market Share by Zip Code



Sales Price: Average & Median



NOTE: Data is collected from the Wilmington Regional Association of Realtors (WRAR) Multiple Listing Service and reflects only New Hanover County, excluding local beaches.