

Wilmington NC

Residential Market Report



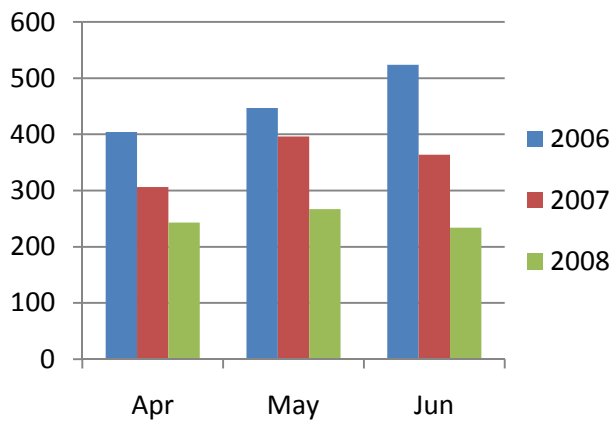
Housing Report

June 2008

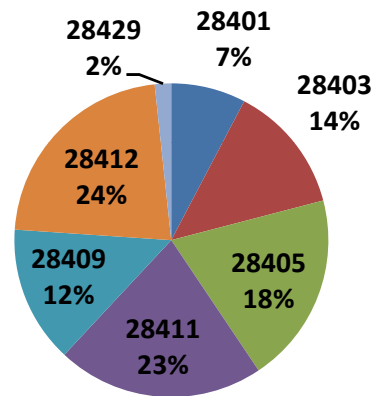
Monthly Solds

zip code	Number of Solds			Avg Sale Price			Avg DOM		
	2008	2007	% change	2008	2007	% change	2008	2007	% change
28401	18	42	-133%	\$189,494	\$169,056	11%	214	82	62%
28403	31	42	-35%	\$228,119	\$218,941	4%	99	88	11%
28405	46	59	-28%	\$255,572	\$392,907	-54%	99	120	-21%
28411	50	77	-54%	\$389,528	\$372,902	4%	117	64	45%
28409	33	65	-97%	\$316,332	\$341,904	-8%	111	102	8%
28412	52	68	-31%	\$224,650	\$247,210	-10%	127	79	38%
28429	4	12	-200%	\$159,188	\$140,231	12%	38	74	-95%
Total	234	365	-56%	\$283,355	\$287,583	-1%	109	90	17%

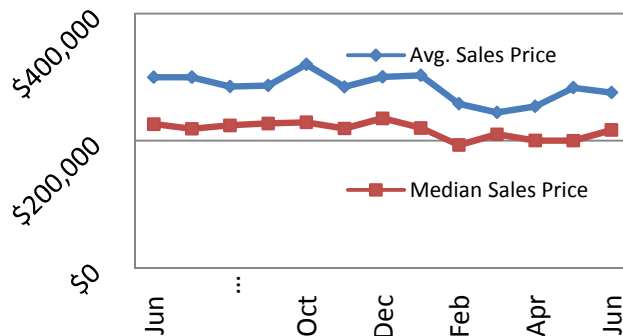
Number of Homes Sold



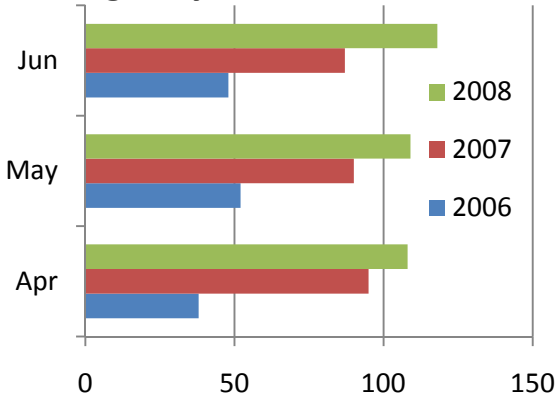
Market Share by Zip Code



Sales Price: Average & Median



Avg. Days on the Market



NOTE: Data is collected from the Wilmington Regional Association of Realtors (WRAR) Multiple Listing Service and reflects only New Hanover County, excluding local beaches.

