

A Moving Experience....In Real Estate



Kimberly James  
*Team*



WELCOME TO THE LAKE  
NORMAN AND GREATER  
CHARLOTTE REGION

[MovetoLakeNorman.com](http://MovetoLakeNorman.com)

704-235-1440

514 Williamson Rd., Suite 411, Mooresville, NC 28117



KimberlyJames  
*Team*

# The Charlotte Region

Total Population	2,263,253
Total Households	875,306
Average Age	36
<b>EDUCATIONAL ATTAINMENT</b>	
Less than High School	324,688
High School	417,553
Associate's Degree	309,828
Some College	100,651
Bachelor's Degree	243,070
Graduate Degree	95,664
<b>INCOME</b>	
Median Household Income	\$46,352
Per Capita Income	\$23,577
<b>EMPLOYMENT BY INDUSTRY</b>	
Agriculture, Mining	11,936
Construction	16,227
FIRE	62,617
Manufacturing	180,207
Public Administration	20,368
Retail Trade	235,167
Wholesale Trade	59,495
Services	327,169
Transportation, Warehousing	83,349
<b>LABOR FORCE</b>	
Population, age 16	1,754,148
Unemployment Rate	%9.0

**Contact Information:**  
The Kimberly James Team  
Keller Williams Realty  
704-235-1440  
[MovetoLakeNorman.com](http://MovetoLakeNorman.com)

The Charlotte Region consists of about 2 million people living in sixteen counties in two different states, 12 counties in North Carolina and 4 in South Carolina. It is strategically located in the center of the East Coast, and the importance of this Eastern time zone location cannot be overestimated. For example, within 2 hours' flight time or one days' delivery by motor freight, businesses in the Charlotte USA region can reach almost 60% of the population of the United States and more than 60% of the nation's industrial base.

If you erase the boundary line between North and South Carolina, the two states together, with Charlotte at the center, consist of more than 12 million people producing an annual gross domestic product approaching \$400 billion. If the Carolinas were a separate country, it would have the 16th largest economy in the world, slightly smaller than Switzerland, and slightly bigger than the Netherlands.



Charlotte USA is very well connected to the global economy. More than 1,800 foreign-owned companies employ more than 350,000 people in the two Carolinas, and more than one-third of these are located in the Charlotte region. There are more than 165 German-owned companies in the Charlotte region, which depends upon a major international airport for quick and convenient access to the global economy. As a result of direct flights to Frankfurt, London, and Munich, the Charlotte region is at most one plane change away from any important business destination in the world.

The Charlotte region's economy draws its strength from its remarkable diversity. In recent years Charlotte USA has emerged as the 2nd largest banking and financial center in the United States, second only to New York City. But for every financial services worker in Charlotte, four others go to work each day in manufacturing plants.

Charlotte USA is home to the world headquarters of eight Fortune 500 companies, and since 1990 new and expanding businesses have invested more than \$18 billion here, creating more than 170,000 new jobs.

The Charlotte region is also determined to preserve its exceptional quality of life. In the global economy, where anything can be made everywhere and sold anywhere, businesses will increasingly locate and expand their operations in places where their employees like to live and work. The Charlotte region is #1 in per capita fundraising for the arts, enjoys professional sports teams, and is within 2 hours of the mountains and 3 hours of the beach.

To make a long story short, more people in the Charlotte region have better jobs, earn more money, and enjoy a higher quality of life than ever before.



KimberlyJames  
*learn*

# The Charlotte Region



LARGEST EMPLOYERS IN THE REGION
Bank of America
Corning Cable Systems
Duke Energy Corporation
Freightliner Corporation
Nucor Steel
Michelin Aircraft Tire Corporation
Tyson Foods
Wachovia
US Airways

### Announced Jobs & Investments

Jobs announced,	5,562
Total investment announced	\$1,420,957,182

### Accessibility

Nearest Major City	Charlotte, NC
Nearest Commercial Airport	Douglas International
Runway Length	10,000 ft.
Nearest Interstate	I-77, I-85, I-40
Nearest Deepwater Port	Port of Wilmington
Distance to Nearest Deepwater Port	96 miles
Foreign Trade Zone Accessibility	Yes
Population within 50 mile radius from Charlotte city center	2,315,668

### Development Capacity

Wastewater Treatment Capacity Available	Yes
Natural Gas Available	Yes

### Average Weekly Wage

Construction	\$477
Manufacturing	\$619
Wholesale Trade	\$601
Retail Trade	\$352
Transportation & Warehousing	\$633
Information	\$565
Finance & Insurance	\$644
Real Estate & Rental & Leasing	\$404
Professional & Technical Services	\$543
Management of Companies & Enterprises	\$890
Administrative & Waste Services	\$450
Educational Services	\$470
Health Care & Social Assistance	\$557
Accommodation & Food Services	\$198
<i>Average Weekly Wage</i>	<i>\$597</i>

### Unemployment Insurance

New Employers (per \$100)	1.2%
Deficit Employers (max rate)	5.7%
Minimum Tax Rate	0.0%
Average Tax Rate	0.4%
Taxable Base	\$15,900

### Inventory Tax

Finished Goods	none
Raw Materials	none
Goods in Process	none
Mat'l consumed in Mfg.	none

### Sales Tax, General

State	4.5%
Local	2.5%

### Sales Tax, Special Provisions

Electricity	3.0%
Natural Gas	3.0%
Manufacturing Fuels	1.0%
Manufacturing Equipment	1.0%
Telecommunications Service (intrastate)	6.0%

### Education

Public Schools	537
Private Schools	137
School Districts	37
Colleges & Universities	29

### Taxes, Sales & Services

Property Taxes/\$100 value	\$0.0885 - \$0.893
Gross Retail Sales (Mil. \$, FY 01-02)	\$33,545.2
Number of Physicians, 2002	7,689
Population/Physician ratio, 2002	290



KimberlyJames  
*Team*

# Area Information



When it comes to the balance of business life and home life, it's rarely possible to have it all. But in Charlotte USA, we can confidently state we do. With convenient access to most any destination in the world, rich cultural opportunities, a mild year-round climate, a wide range of housing options, quality education and a low cost of living, the Charlotte region truly does offer something very special. Rural and urban settings provide a variety of activities within a short drive, from hiking in the mountains and bathing on the beaches, to attending major league sporting events and cultural festivities.

**“Our relocation package featured a provision that, after one year, anyone who wanted to return to New York would be able to do so.”**

**- Tom Hughes, Hearst Corporation, recalling the relocation of a large contingent from Manhattan to Charlotte in 1990. Out of 270 employees who came to Charlotte, only 3 moved back to New York.**



- Charlotte USA has an average annual temperature of a mild 61 degrees.  
Average Summer Temperature: 48° F  
Average Winter Temperature: 87° F
- According to MLS statistics, the average home price is \$116,124, compared to a U.S. average of \$130,200.
- Among larger population centers, the Charlotte region's cost of living index of 96.7 is lower than the index for Dallas, Denver, Chicago, Pittsburgh, Cleveland or Miami.
- The Charlotte region has the second lowest industrial building cost of the 116 North American cities recently surveyed by Kemper National Insurance Company - less than 80 percent of the national average.
- The region is home to four universities, 11 liberal arts colleges and ten community colleges. Additionally, a wide curriculum of state-sponsored work training programs is available.
- Our region is #1 in per capita giving to the Arts and Sciences and #2 in total dollars raised (2nd only to New York).
- The Charlotte region is a short drive to the Blue Ridge Mountains or the famed Carolina beaches. Outdoor activities include boating, hiking and playing on some of the nations most outstanding golf courses.

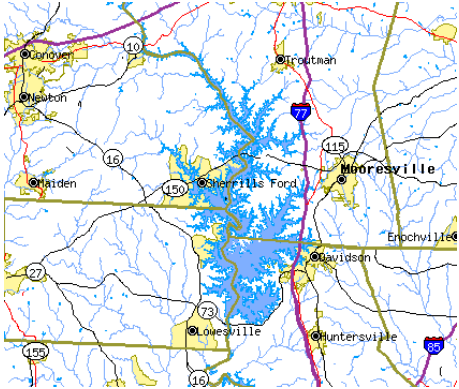
With teams in the NFL, NBA, IHL and AAA baseball as well as our reputation as a major NASCAR headquarters, the Charlotte region continues to be recognized as a national sports market.

If there's one thing our residents and visitors will gladly tell you, it's that Charlotte USA is rich in things to do and see. We have all the advantages of a major metropolitan city, yet manage to keep it all in perspective, giving Charlotte USA a unique southern charm.



KimberlyJames  
*learn*

# Lake Norman



## Lake Norman History

Lake Norman was created in 1963 when Duke Power Company dammed the Catawba River with Cowans Ford Dam. This lake is the largest manmade body of fresh water in North Carolina. The lake takes its name from former Duke Power President Norman Cocks. The dam and lake serve the area in many ways providing electricity and water, controlling flooding and providing a terrific source of recreation. Duke Power has three power plants on Lake Norman.

- Cowans Ford Hydroelectric Station is capable of generating a total of 372,000 kilowatts of electricity.
- Marshall Steam Plant is the company's second largest coal-burning plant. It generates more than two million kilowatts of electricity and burns about 1800 tons of coal daily.
- McGuire Nuclear Station is the newest power plant. McGuire's two units are capable of generating 2.3 million kilowatts of electricity.

Lake Norman has over 500 miles of shoreline and a surface area of more than 32,475 acres. Lake Norman is nearly as large as the other ten lakes on the Catawba combined. Full pond elevation is 760 feet.

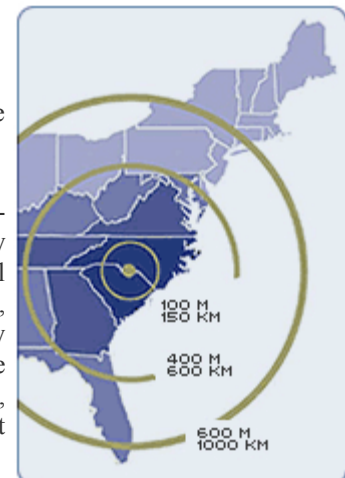
Lake Norman offers a variety of outdoor recreation, such as golfing, biking, swimming, water skiing, fishing, and boating. Three county parks are located on the southern shores: Blythe Landing, Ramsey Creek and Jetton Road Park, two with public boat launching sites. On the northern shores, Duke Power State Park has campsites, nature trails, boat ramps and the only public swimming area.

## Accessibility

Lake Norman is located 20 miles north of uptown Charlotte, North Carolina. The Lake Norman area is made up of four counties: Mecklenburg County, Lincoln County, Catawba county, and Iredell County. There are several small towns that surround Lake Norman and each offer a different lifestyle; from suburban life to county living.

Lake Norman is located about two hours west of the beautiful North Carolina mountains and about three and a half hours east of the Atlantic ocean. Within a 650 mile radius of Charlotte USA, you can reach 57% of the U.S. population, which includes cities as far as New York, Chicago, and Orlando. With a major international airport, an extensive railroad system, three major interstates, and close access to a seaport, Charlotte USA is accessible and business friendly.

Serving more than 22 million passengers a year, the Charlotte/Douglas International Airport is the 6th largest major airline hub in the nation. With over 500 daily departures with direct non-stop service to 116 destinations, including international service to Germany, England, Canada, Mexico, South America, and the Caribbean, it is often said that Charlotte is at most one plane change away from virtually any major city in the world. The airport is a 15 minute drive from downtown Charlotte and no more than 50 minutes from any part of the Lake Norman area. In addition, full air-cargo service is ranked 33rd nationwide delivering 225,000 tons of freight and mail a year.





KimberlyJames  
*Team*

# Healthcare Information

## CHARLOTTE / MECKLENBURG

### **Carolinas Medical Center**

1000 Blythe Blvd., Charlotte, NC  
(704) 355-2000 / (704) 355-4084

### **Carolinas Medical Center - University**

PO Box 560727  
Charlotte, NC 28256  
(704) 548-6000 / (704) 355-4084

### **Mercy Hospital**

2001 Vail Ave., Charlotte, NC 28207  
(704) 379-5000 / (704) 379-6045

### **Mercy Hospital South**

10628 Park Rd., Charlotte, NC 28210  
(704) 543-2000 / (704) 379-6045

### **Presbyterian Hospital**

200 Hawthorne Lane, Charlotte, NC 28204  
(704) 384-4000 / (704) 384-4296

### **Presbyterian Hospital Matthews**

1500 Matthews Township Parkway  
Matthews, NC 28105  
(704) 384-6370 / (704) 384-6515

### **Presbyterian Hospital Huntersville**

10030 Gilead Road  
Huntersville, NC 28078  
(704)316-4000

## CATAWBA COUNTY

### **Catawba Valley Medical Center**

810 Fairgrove Church Road  
Hickory, NC 28602  
(828)326-3200

### **Frye Regional Medical Center**

420 North Center Street  
Hickory, NC 28602  
(828)315-5000

## IREDELL COUNTY

### **Lake Norman Regional Medical Center**

111 Fairview Rd.  
Mooresville, NC 28117  
(704) 660-4000

## LINCOLN COUNTY

### **Lincoln Medical Center**

200 Gamble Drive  
Lincolnton, NC 28037  
(704)735-3071





KimberlyJames  
team

# Iredell County

## IREDELL COUNTY

Iredell county has it all. The cities of Statesville and Mooresville have joined forces to claim Top Micropolitan area in 2004, as ranked by Site Selection Magazine. Twenty four new and expanded corporate facility projects helped secure this top honor.

Iredell County is one of the few counties in the Carolinas with two connecting interstates. I-77 runs north and south while I-40 runs east and west. Additionally, I-85 is only fifteen minutes away. Recreation, fun and quality of life abound on Lake Norman, with a 532 mile shoreline. The county is a very pro-business community with a strong motorsports industry.



## OVERVIEW

### POPULATION

Total Population	153,650
Total Households	60,562
Average Age	37

#### Age % The Population

0-17 years	33%
18-24 years	6%
25-34 years	13%
35-44 years	16%
45-54 years	14%
55-64 years	10%
65+ years	13%

*\*Source: Experian/Applied Geographic Solutions*

### HOUSEHOLD INCOME

Year	Median HHI	PCI
1990	\$28,893	\$13,052
2000	\$42,088	\$20,910
2003	\$45,651	\$22,864
2008	\$51,242	\$23,760

*\*Source: Experian/Applied Geographic Solutions*

### WORKFORCE EDUCATION

Level	Total	%
Less than High School	19,592	22%
High School Graduate	29,010	32%
Some College	19,039	21%
Associates Degree	6,991	8%
Bachelor's Degree	11,329	13%
Master's Degree	4,227	5%

### LABOR PARTICIPATION

Labor Force	71,007	Emp.
Employed	68,105	
Unemployed	2,839	
Unemployed Rate	4.0%	

*\*Source: Experian/Applied Geographic Solutions*

### LARGEST EMPLOYERS

Lowe's  
Lake Norman Regional Medical Center  
Sara Lee Intimate Apparel  
ASMO of NC, Inc  
Dana Spicer  
Kewaunee Scientific  
Engineered Sintered Components  
Dale Earnhardt Inc.  
Trim Systems LLC  
CommScope

*\*Source: Charlotte USA regional counties*



Kimberly James  
*Team*

# Lincoln County

## LINCOLN COUNTY

Lincoln County is a place where things are still made. Where skilled workers know how to use their hands as well as their heads. Where business, industry and distribution exist comfortably side by side with quality small town, county and lakeside living. Where traffic doesn't roar by but interstates are just down the road. Where traffic doesn't roar by but interstates are just down the road. Where big city amenities are nearby but urban sprawl doesn't yet intrude. The county is rapidly being recognized as a manufacturing and distribution hub with a growing automotive sector and has benefited from domestic and international investment. The western side of the lake is growing and developing. This is the next "place to live".



## OVERVIEW

### POPULATION

Total Population	71,623
Total Households	27,334
Average Age	38

#### Age % The Population

0-17 years	20%
18-24 years	12%
25-34 years	13%
35-44 years	17%
45-54 years	15%
55-64 years	12%
65+ years	12%

*\*Source: Experian/Applied Geographic Solutions*

### HOUSEHOLD INCOME

Year	Median HHI	PCI
1990	\$28,762	\$13,052
2000	\$41,659	\$20,910
2003	\$46,374	\$22,864
2008	\$51,529	\$23,760

*\*Source: Experian/Applied Geographic Solutions*

### WORKFORCE EDUCATION

Level	Total	%
Less than High School	13,057	29%
High School Graduate	14,592	32%
Some College	9,728	21%
Associates Degree	2,547	6%
Bachelor's Degree	4,305	9%
Master's Degree	1,510	3%

### LABOR PARTICIPATION

Labor Force	Emp.	36,131
Employed		34,679
Unemployed		1,415
Unemployed Rate		3.9%

*\*Source: Experian/Applied Geographic Solutions*

### LARGEST EMPLOYERS

RSI Home Products  
The Timken Company  
Robert Bosch Tool Corporation  
Blum, Inc.  
Cochrane Furniture  
R-Anell Housing Group LLC  
Mohican Mills  
LA-Z-Boy—Rosco Manufacturing  
McMurray Fabrics, Inc.

*\*Source: Charlotte USA regional counties*





KimberlyJames  
*Team*

# Catawba County

## CATAWBA COUNTY

Catawba County possesses a diverse economy with a strong manufacturing climate coupled with extensive retail and residential development. *Outlook Americas* has ranked three Catawba County municipalities in the top five Best Manufacturing Small Towns in the Country. Just some of the diversified manufacturing sectors that call Catawba County home include machining and metal working, plastics, cable and furniture.

The Hickory Metro area has been named the 10th Best Place to Live and Raise a Family in the United States by *Reader's Digest*. *Business North Carolina* magazine also reported that Catawba County's largest city, Hickory, was the 8th best city in the state for its quality of life.



## OVERVIEW

### POPULATION

Total Population	152,680
Total Households	60,551
Average Age	38

#### Age % The Population

0-14 years	20%
15-24 years	12%
25-34 years	14%
35-44 years	16%
45-54 years	14%
55-64 years	11%
65+ years	13%

*\*Source: Experian/Applied Geographic Solutions*

### HOUSEHOLD INCOME

Year	Median HHI	PCI
1990	\$29,286	\$13,633
2000	\$40,554	\$20,359
2003	\$45,616	\$23,566
2008	\$51,316	\$23,546

*\*Source: Experian/Applied Geographic Solutions*

### WORKFORCE EDUCATION

Level	Total	%
Less than High School	25,183	25%
High School Graduate	31,207	31%
Some College	19,230	19%
Associates Degree	6,934	7%
Bachelor's Degree	11,985	12%
Master's Degree	4,582	5%

### LABOR PARTICIPATION

Labor Force	81,401	Emp.
Employed	78,582	
Unemployed	2,676	
Unemployed Rate	3.3%	

*\*Source: Experian/Applied Geographic Solutions*

### LARGEST EMPLOYERS

- CommScope
- Corning Cable Systems
- Hickory Chari Co.
- Bassett Upholstery
- Progressive Furniture
- Century Casegoods
- Ellis Hosiery Mills Inc.
- Sherrill Furniture
- Hancock & Moore Inc
- Ethan Allen Inc.

*\*Source: Charlotte USA regional counties*



KimberlyJames  
Team

# Mecklenburg County

## MECKLENBURG COUNTY

Mecklenburg County offers advantages of a “big-city” location but in a much more manageable sized community and at a cost that is consistently below the national average. Mecklenburg County has more manufacturing firms than any other county in the Carolinas with over 1,275. It is also one of the nation’s largest distribution and trucking center locations. More recently, Charlotte has become well known for the financial services industry, now ranking second only to New York.

Charlotte has a thriving arts community and consistently leads the nation in giving for the arts. Education is also first rate in Mecklenburg County with four of the nation’s top 100 high schools located here.



## OVERVIEW

### POPULATION

Total Population	813,852
Total Households	325,716
Average Age	34

#### Age % The Population

0-14 years	21%
15-24 years	14%
25-34 years	16%
35-44 years	17%
45-54 years	14%
55-64 years	9%
65+ years	9%

*\*Source: Experian/Applied Geographic Solutions*

### HOUSEHOLD INCOME

Year	Median HHI	PCI
1990	\$33,965	\$16,758
2000	\$50,638	\$27,353
2003	\$58,263	\$32,825
2008	\$67,657	\$39,681

*\*Source: Experian/Applied Geographic Solutions*

### WORKFORCE EDUCATION

Level	Total	%
Less than High School	70,134	14%
High School Graduate	100,917	20%
Some College	113,045	23%
Associates Degree	33,992	7%
Bachelor’s Degree	132,199	26%
Master’s Degree	51,913	10%

### LABOR PARTICIPATION

Labor Force	426,204	Emp.
Employed	403,692	
Unemployed	22,138	
Unemployed Rate	5.2%	

*\*Source: Experian/Applied Geographic Solutions*

### LARGEST EMPLOYERS

Wachovia Corp.  
 Carolinas Healthcare System  
 Bank Of America  
 Duke Energy Corporation  
 US Airways  
 Presbyterian Regional Healthcare  
 Harris Teeter, Inc.  
 Adecco  
 BellSouth Telecommunications  
 Excel Staffing Services of Charlotte

*Wachovia\*Source: Charlotte USA regional counties*



KimberlyJames  
*Team*

# School Information

## IREDELL COUNTY SCHOOLS

**The following Iredell schools attended by Lake Norman residents, there are a number of other schools that your child may attend if you reside in the town of Mooresville, or Statesville. You may call 704-924-2047 for specific info or visit [www.iss.k12.nc.us](http://www.iss.k12.nc.us)**



### Mount Mourne Elementary School (PK-5)

704-892-4711                      1431 Mecklenburg Highway , Mooresville, NC 28115  
Enrollment:                      546                      Principal: Tom Edwards

### Lake Norman Elementary School (K-5)

704-622-8262                      255 Oak Tree Road Mooresville, NC 28117  
Enrollment:                      1243                      Principal: Ann Nivens

### Lakeshore Elementary School (K-5)

704-660-5970                      252 Lakeshore School Road, Mooresville, NC 28117  
Enrollment:                      821                      Principal: Melanie Mckenzie

### Shepherd Elementary- (K-5)

704-664-2582                      1748 N. Charlotte Hwy, Mooresville, NC 28117  
Enrollment:                      441                      Principal: Mary Anne Wilson

### Troutman Elementary School (K-5)

704-528-4526                      220 S Main Street, Troutman, NC 28166  
Enrollment:                      744                      Principal: Donna Sigmon

### Woodland Heights Elementary- (K-5)

704-663-1370                      288 Forest Lake Blvd., Mooresville, NC 28117  
Enrollment:                      TBD                      Principal: Olivia Riddle

### Brawley Middle School (6-8)

704-664-4430                      664 Brawley School Road , Mooresville, NC 28225  
Enrollment:                      851                      Principal: Roberta A. Ellis

### Lakeshore Middle School (6-8)

704-799-0187                      252 Lakeshore School Drive , Mooresville, NC 28117  
Enrollment:                      591                      Principal: Jim Gaghan

### Lake Norman High School

704-799-8555                      186 Doolie Road, Mooresville, NC 28117  
Enrollment:                      1410                      Principal: David Blattner

#### **Contact Information:**

The Kimberly James Team  
Keller Williams Realty  
514 Williamson Rd. Suite 411  
Mooresville, NC 28117  
704-235-1440  
info@movetolakenorman.com  
www.movetolakenorman.com



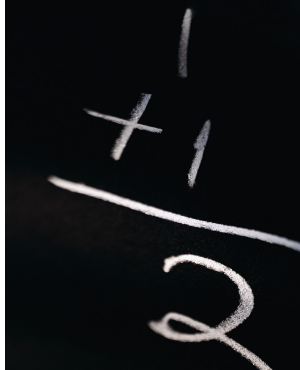


Kimberly James  
*Team*

# School Information

## MOORESVILLE GRADED SCHOOL DISTRICT

**For more information about Mooresville Graded School District  
Call (704) 658-2530**



### ParkView Elementary School (PreK-2)

704-664-5343                      217 W. McNeely Avenue, Mooresville, NC 28115  
Enrollment:                      629                      Principal:     Barbara Gandy

### South Elementary School (PreK-2)

704-664-9777                      839 S. Magnolia St, Mooresville, NC 28115-2897  
Enrollment:                      761                      Principal:     Deborah Marsh

### East Mooresville Intermediate (3-6)

704-658-2700                      1711 Landis Hwy, Mooresville, NC 28115  
Enrollment:                      717                      Principal:     Linda Fisher

### Mooresville Intermediate (3-6)

704-799-6471                      233 Kistler Farm Road, Mooresville, NC 28115  
Enrollment:                      1014                      Principal:     Julie Morrow



### Mooresville Middle (7-8)

704-658-2720                      160 South Magnolia St, Mooresville, NC 28115  
Enrollment:                      764                      Principal:     Stephen Mauney

### Mooresville High School (9-12)

704-658-2580                      659 E Center Avenue, Mooresville, NC 28115  
Enrollment:                      1321                      Principal:     Dr Mark Rendell

### N.F. Woods Advanced Technology Center& Arts (9-12)

704-658-2500                      574 W.McLelland Avenue, Mooresville NC 28115  
Enrollment:                      NA                      Principal:     Devry Gibbs

#### **Contact Information:**

The Kimberly James Team  
Keller Williams Realty  
514 Williamson Rd. Suite 411  
Mooresville, NC 28117  
704-235-1440  
info@movetolakenorman.com  
www.movetolakenorman.com





KimberlyJames  
*Team*

# School Information

## CATAWBA COUNTY SCHOOLS

**For more information about Catawba County Schools  
call 828-464-8333**



### Sherrills Ford Elementary (K-5)

828-478-2662                      6471 Highway 73 Denver, NC 28037

Enrollment:            716            Principal:    Vermel Moore

### Catawba Intermediate (6<sup>th</sup> grade only)

828-241-3131                      403 6<sup>th</sup> Avenue SW, Catawba, NC 28609

Enrollment:            341            Principal:    Cynthia McKee

### Mill Creek Middle (7-8)

828-241-2711                      1041 Shiloh Road, Claremont, NC 28610

Enrollment:            555            Principal:    Beth Isenhour

### Bandy's High School (9-12)

828-241-3171                      5010 E. Bandy's Road, Catawba, NC 28609

Enrollment:            1032            Principal:    John Westberg

## LINCOLN COUNTY SCHOOLS

**For more information about Lincoln County Schools  
call: 704-732-2261**

### Rock Springs Elementary (K-5)

704-483-2281                      3633 North Highway 16, Denver, NC 28037

Enrollment:            528            Principal:    Rhonda Harrill

### Catawba Springs Elementary School (K-5)

704-736-1895                      206 N. Little Egypt Road, Denver, NC 28037

Enrollment:            461            Principal:    Mitchell Eisner

### St. James Elementary School (K-5)

704-736-1958                      1774 St. James Church Road, Denver, NC 28037

Enrollment:            395            Principal:    E. Larry Shouse

### East Lincoln Middle School (6-8)

704-732-0761                      4137 Highway 73 Iron Station, NC 28080

Enrollment:            628            Principal:    Diana Carpenter

### Pumpkin Center Middle School (6-8)

704-736-0262                      3980 King Wilkinson Road Lincolnton, NC 28092

Enrollment:            619            Principal:    Bobby Harkey

### East Lincoln High School (9-12)

704-483-5681                      6471 Highway 73 Denver, NC 28037

Enrollment:            816            Principal:    Todd Black

### North Lincoln High School (9-12)

704-736-1969                      2737 Lee Lawing Road Lincolnton, NC 28092

Enrollment:            866            Principal:    Richard Freeman

### Lincoln County School of Technology (Vo-Tech: 10-12)

704-732-4804                      1 Timken Drive Lincolnton, NC 28092

Enrollment:            N/A            Principal:    David Bynum



### **Contact Information:**

The Kimberly James Team  
Keller Williams Realty  
514 Williamson Rd. Suite 411  
 Mooresville, NC 28117  
704-235-1440  
info@movetolakenorman.com  
www.movetolakenorman.com



KimberlyJames  
*Team*

# School Information

**NORTH MECKLENBURG COUNTY SCHOOLS**  
**For more information on Mecklenburg Schools**  
**Contact 704-343-7450 or visit [www.cmsk12.nc.us](http://www.cmsk12.nc.us)**

Blythe Elementary (K-5)

980-343-5770 12202 Hambright Rd., Huntersville, NC 28078  
Enrollment: 1482 Principal: Jo Karney

Cornelius Elementary (K-5)

980-343-3905 21126 Catawba Ave., Cornelius, NC 28031  
Enrollment: 1312 Principal: Barry Burford

Davidson Elementary (K-5)

980-343-3900 635 South Street, Davidson, NC 28036  
Enrollment: 897 Principal: Celeste Ellis

Huntersville Elementary (K-5)

980-343-3835 200 Gilead Rd. Box 829, Huntersville, NC 28070  
Enrollment: 1180 Principal: Deborah Mangieri

J.V. Washam Elementary (Pre-K-5)

980-343-1071 9611 Westmoreland Rd., Cornelius, NC 28031  
Enrollment: TBD Principal: Cathy Hammond

Long Creek Elementary (PreK-5)

980-343-6095 9213 Beatties Ford Rd., Huntersville, NC 28078  
Enrollment: 766 Principal: Phyllis Baldwin

Torrence Creek Elementary (K-5)

980-343-0695 14550 Ranson Road Huntersville, NC 28078  
Enrollment: TBD Principal: Kevin Paige

Bailey Middle School (6-8)

980-343-1068 11900 Bailey Rd, Cornelius, NC 28031  
Enrollment: TBD Principal: Angela Baucom

Bradley Middle School (6-8)

980-343-5750 13345 Beatties Ford Rd., Huntersville, NC 28078  
Enrollment: 1656 Principal: Ron Dixon

Davidson IB Middle School (6-8)

980-343-5185 25100 South Street, Box 1883, Davidson, NC 28036  
Enrollment: 240 Principal: Louise Jones

J.M. Alexander Middle School (6-8)

980-343-3830 12201 Hambright Rd. Huntersville, NC 28078  
Enrollment: 1660 Principal: Joanna Smith

North Mecklenburg High School (9-12)

980-343-3840 11201 Old Statesville Rd., Huntersville, NC 28078  
Enrollment: 2667 Principal: Joey Burch

Hopewell Senior High School (9-12)

980-343-5988 11530 Beatties Ford Rd., Huntersville, NC 28078  
Enrollment: 2137 Principal: Kendra March



**Contact Information:**

The Kimberly James Team  
Keller Williams Realty  
514 Williamson Rd. Suite 411  
 Mooresville, NC 28117  
704-235-1440  
[info@movetolakenorman.com](mailto:info@movetolakenorman.com)  
[www.movetolakenorman.com](http://www.movetolakenorman.com)



KimberlyJames  
*Team*

# Recreation

## PARKS

**Lake Norman State Park** (formerly Duke Power State Park) located on Lake Norman near Troutman, offers group and family camping, boating and boat rentals, fishing, nature and hiking trails, nature programs, picnicking, and swimming.  
Exit 42 of I-77

704-528-6350

### **Blythe Landing**

located on Lake Norman, there are 6 boat ramps & 7 boat slips. There are 4 outdoor sand volleyball courts, a playground structure and picnic sites with grills (non-reserveable). There is a concession building at Water-front Plaza and wave runner rentals during peak season.  
15901 NC Hwy. 73

704-948-3822

### **Ramsey Creek Park**

located on Lake Norman features four paved boat ramps, a fishing pier, picnic shelters and tables, athletic fields, a playground and a nature trail.  
18441 Nantz Rd., Cornelius

704-892-7852

### **Jetton Park**

is on a peninsula that reaches into Lake Norman. The park features paved hiking, biking & rollerblade trails, 8 lighted championship tennis courts, a playground, picnic areas and sunning beach.  
19000 Jetton Rd., Cornelius

704-896-9808

**David B. Waymer Complex** located on 18 acres, features a recreation center, community room and lighted athletic fields.

14200 Holbrooks Rd., Huntersville

704-875-7000

## RECREATION

### **Energy Explorium**

Duke Power has made learning about energy fun. Located at McGuire Nuclear Site on Lake Norman, visitors may enjoy hands on exhibits, view films and play computer games. The site features a nature trail and native wildflower garden and offers a view of McGuire Nuclear Station. The Explorium is open year round except for Thanksgiving, Christmas Eve, Christmas Day, New Year's Eve, and New Year's Day. It is open 9:00 a.m. - 5:00 p.m. Monday through Saturday and 12 noon - 5:00 p.m. Sunday. Reservations are needed for group tours.

Hwy 73, Cornelius (Exit 25 or 28 off I-77)

704-875-5600

### **Latta Plantation Nature Preserve**

Latta Plantation, a 1,000 plus-acre nature preserve on Mountain Island Lake, features nature trails, bridle paths, fishing & canoe access to the lake, picnic areas, playground, a pier and a Visitor's Center. Inside the preserve is the Latta Equestrian Center where visitors can learn to ride or watch horse shows. The preserve is open free to the public 7:00 a.m. until dark, seven days a week.

5225 Sample Rd., Huntersville  
Equestrian Center

704-875-1391

704-875-0808

### **Latta Place**

This 1800 Catawba River Plantation re-creates the life-style of early Mecklenburg County. It features a living history tour of the house, slave house, barn smokehouse, a well house, a demonstration kitchen and animals.

Latta Place (in Latta Plantation Nature Preserve)

704-875-2312

### **Carolina Raptor Center**

The Raptor Center is dedicated to the rehabilitation, research and conservation of birds of prey, including eagles, falcons, ospreys, owls and hawks. It also involves the education of the public about raptors. Visitors can view more than 20 species of live birds of prey.

Raptor Center (in Latta Plantation Nature Preserve)

704-875-6521

### **Lazy 5 Ranch**

3 1/2 mile drive-through safari featuring 400 animals from around the world includes picnicking, wagon rides, petting zoo and playground.

Highway 150 East, Mooresville

704-663-5100

**Lock Norman Highland Games** - 704-873-3113

(Spring) **Renaissance Festival** - 704-896-5544 (Fall)

**Huntersville Community Center** features an outdoor waterpark, indoor pools, fitness center, gym and meeting room.

11725 Verhoeff Dr.

704-766-2222

### **Contact Information:**

The Kimberly James Team  
Keller Williams Realty  
514 Williamson Rd. Suite 411  
Mooresville, NC 28117  
704-235-1440  
info@movetolakenorman.com  
www.movetolakenorman.com



KimberlyJames  
*Team*

# Points of Interest

## **North Carolina Auto Racing Hall of Fame -119 Knob Hill Road, Mooresville**

This museum has everything you ever wanted to see that has to do with racing and it also has an area race shop guide that lists all the race teams located in Mooresville. For more information, call 704-663-5331.

## **D.E. Turner Hardware -111 North Main Street, Downtown Mooresville**

This quaint hardware store remains the same as it was when it opened in this location over 100 years ago. The owners have kept many examples of 19th and 20th century's hardware for you to see. For more information call 704-664-5145.



## **Depot Visual Arts Center -103 West Center Avenue, North Main Street**

Today the Depot, originally known as "Moor's landing," houses the Mooresville Artist Guild and displays artwork by local and visiting artists. For more information call 704-663-6661.



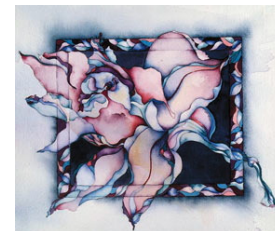
## **Mooresville Ice Cream - 172 North Broad Street, Downtown Mooresville**

For a special tasty treat at an old time ice-cream bar, visit the manufacturer and distributor of Deluxe Ice Cream. It's guaranteed to be a mouth-watering experience. For more information call 704-664-5456.



## **Landmark Gallery - 212 North Main Street, Downtown Mooresville**

The gallery is the home of internationally known artist "Cotton Ketchie." Landmarks and other special places come to life with his watercolors and limited prints. Also available in the gallery are North Carolina hand-made pottery and selected antiques. For more information call 704- 664-4122.



## **The Catawba Queen/Queens Landing - NC Hwy. 150 West, Mooresville (1-77 at Exit 36)**

Time stands still as you cruise Lake Norman aboard the Catawba Queen, a replica of the old side-wheel steamboat. Or enjoy a day of play on their bumper boats, playing miniature golf, or dine in the wonderful restaurant or deli. For more information call 704-663-2628.

## **Mooresville Golf Center - Bluefield Road, Off Highway 150 West**

This facility offers miniature golf, a batting cage, game room, fully stocked Pro Shop, golf lessons, club repair, grass tees available, practice tees available, driving range (undercover tees for wet weather practice), practice putting green & chipping area and a snack bar. For more information call 704-664-3200

### **Contact Information:**

The Kimberly James Team  
Keller Williams Realty  
514 Williamson Rd. Suite 411  
Mooresville, NC 28117  
704-235-1440  
info@movetolakenorman.com  
www.movetolakenorman.com





KimberlyJames  
*Team*

# Points of Interest

## **Lake Norman State Park - Perth Church Road, Troutman**

The Lake Norman State Park has 1,362 acres of land on the shores of Lake Norman. It is not only an access for Lake Norman but also includes a 33-acre constant level lake. The park offers hiking trails, picnic areas, fishing, boating, swimming and camping. Canoe and rowboat rents are also available. For more information call 704-528-6350.



## **The Lazy 5 Ranch - Highway 150 West, Mooresville (1-77, Exit 36)**

The Lazy 5 Ranch is home to over 400 animals from 6 continents. As you drive through this 3 1/2 mile safari, take your time to study their behavior and take pictures of this collection of animals you will not find anywhere else in the southeast. For more information call 704-663-5100.

## **Carrigan Farms - Highway 150 East, Mooresville (1-77, Exit 36)**

Carrigan Farms is a working farm where you can find an abundance of vegetables and fruits. Buy fresh fruits from their stand or pick your own. For more information call 704-664-1450. Energy Explorium - Highway 73, Cornelius (1-77, Exit 36) Located on Lake Norman near McGuire Nuclear Plant, the Explorium offers an opportunity to learn about electricity, conservation, the environment safety, nuclear power and energy trends for the future through fun and exciting hands-on exhibits. Enjoy the one-mile nature trail and wildflower garden. For more information call 704-875-5600.



## **The Tom Clark Museum - 131 North Main Street, Davidson**

The gnomes and wood spirits of internationally recognized sculptor, Tom Clark, are on display in historic downtown Davidson. For more information call 704-892-9213.

## **Memory Lane Motorsports & Historic Automotive Museum - 769 River Hwy. Mooresville (1-77, Exit 36)**

Race Cars, vintage autos, motorcycles, toys & memorabilia. Enjoy many one-of-a-kind vehicles never before on display. Trace the history of racing the automobile...a unique experience. For more information call 704-660-6936.

### **Contact Information:**

The Kimberly James Team  
Keller Williams Realty  
514 Williamson Rd. Suite 411  
Mooresville, NC 28117  
704-235-1440  
info@movetolakenorman.com  
www.movetolakenorman.com



KimberlyJames  
*Team*

# Points of Interest

## LAKE NORMAN MARINAS

### **All Seasons Marina**

PO Box 470 Mt. Mourne, NC 28123  
704-892-3478

### **Midway Marina**

8693 Hwy. 150 East Terrell, NC 28682  
828-478-2333

### **River City Marina**

155 Pinnacle Lane  
Mooresville, NC 28117  
704-663-6600

### **Skippers Dry Storage and Boat Rentals**

1152 Perth Road Mooresville, NC 28117  
704-528-3328

### **Stutts Marina**

571 Stutts Road Mooresville, NC 28117  
704-664-3106



## PUBLIC LAKE ACCESS AREAS

- Beatty Ford** - Unity Church Road
- Lake Norman State Park**-State Park Road
- Hagar Creek** - Kemp Road
- Little Creek** - Webb's Chapel Road
- Long Island** - Smyrna Church Road
- McCrary Creek** - Highway 150
- Pinnacle** - Highway 150
- Stumpy Creek** - Perth Road

## PARKS

**Lake Norman State Park** - State Park Rd  
Bicycle trails, nature trails, picnicking  
picnicking, volleyball, courts, playground

**Jetton Road Park** - Jetton Road  
Bicycle trails, nature trails, picnicking,  
playground, beach, tennis court

**Ramsey Creek Park** - Nantz Road  
Boat ramps, fishing, nature trails  
and swimming



## SOME IMPORTANT NUMBERS

<b>Coast Guard Auxiliary</b>	<b>704-663-3333</b>
<b>Lake Norman Commission</b>	<b>704-372-2416</b>
<b>Iredell County Lake Patrol</b>	<b>704-878-3100</b>
<b>N.C. Wildlife Commission</b>	<b>919-662-4381</b>
<b>Lake Level</b>	<b>800-829-LAKE</b>



KimberlyJames  
*Team*

# Motorsports

## A finely tuned engine

The Charlotte region continues to strengthen its position as one of the premier places to locate a business. Charlotte USA has established itself as a major manufacturing and distribution hub at the center of North and South Carolina, and continues to diversify its economy with location of corporate headquarters, manufacturing operations and high-technology companies. Charlotte USA has a unique blend of corporate and small business strength, unparalleled access via land, air, and sea, and a unique quality of life.

## Business strength

- Second largest financial center in the U.S.
- Nine *Fortune*® 500 companies headquartered here
- Top U.S. city in foreign firms growth
- Second in the nation in number of new factories opened during the 1990s
- Among the top five U.S. cities in expansion of existing facilities

## Accessibility

- Distribution hub for the fifth-largest urban region in the U.S.
- Located midway on the East Coast between New York City and Miami, FL.
- 52% of US population and 62% of industrial base within 650mi./1,000km

## Air

- More flights per capita than almost any other U.S. region
- Non-stop direct service to over 120 cities
- Daily direct service to Frankfurt, Munich, London, (Gatwick), Toronto and Mexico City, among others

## Truck

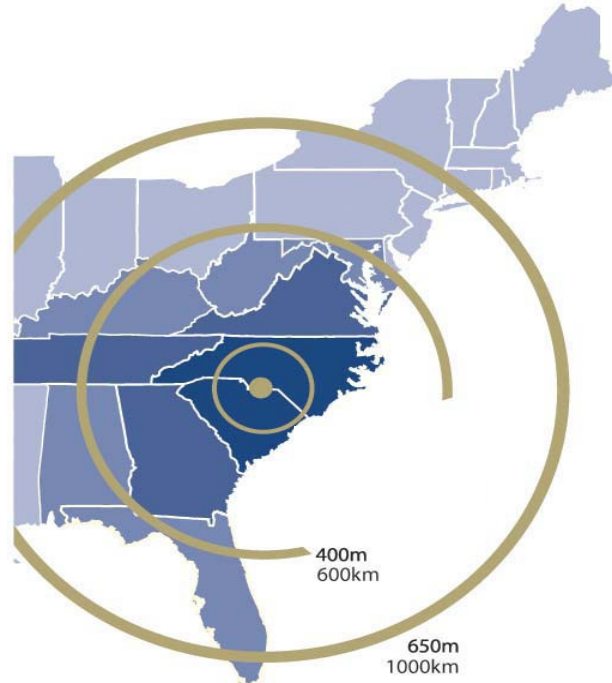
- Served by four interstate highways (I-40, I-77, I-485 and I-85)
- Served by nine of the nation's top 10 trucking companies
- Part of the nation's 8th largest trucking center
- Over 300 trucking companies
- 57% can be reached within 2 hours by air or 1 day by truck

## Sea

- Home to an inland intermodal terminal
- Easy access to the second largest port on the East Coast (Charleston), as well as Wilmington, Morehead City and Savannah

## Rail

- At the center of the largest consolidated rail system in the country
- Serviced by CSX, Norfolk Southern, Lancaster and Chester railway and a number of short line railroads



## Quality of life

- Home to NFL's Carolina Panthers, NBA's Charlotte Bobcats, WNBA's Charlotte Sting, Triple A baseball's Charlotte Knights, ECHL's Charlotte Checkers, three NASCAR Nextel Cup events, and arena football
- #1 in per capita giving to the arts and sciences
- 28 colleges and universities
- Over 100 public and private golf courses
- Over 1,770 miles of lake shoreline
- Average annual temperature: 61°F/16°C
- Average annual days of sunshine: 214



## Recent Rankings

- *Business Facilities* magazine ranked Charlotte USA No. 3 on its 2003 list of best cities for corporate headquarters
- #2 on *Money* magazine's list of Best Places to Live in America in 2002
- *Site Selection* magazine (a major corporate relocation publication) placed North Carolina number one for business climate and South Carolina number six

## Contact Information:

The Kimberly James Team  
Keller Williams Realty  
514 Williamson Rd. Suite 411  
 Mooresville, NC 28117  
704-235-1440  
info@movetolakenorman.com  
www.movetolakenorman.com



# Motorsports

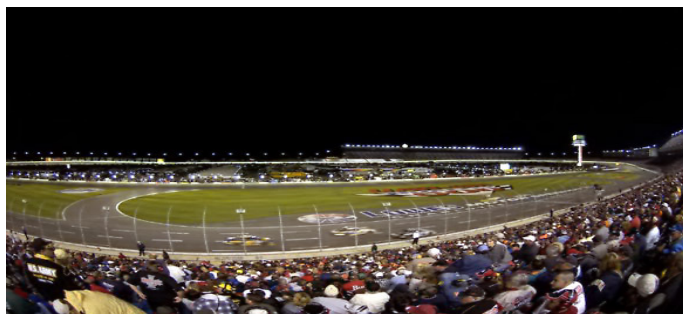
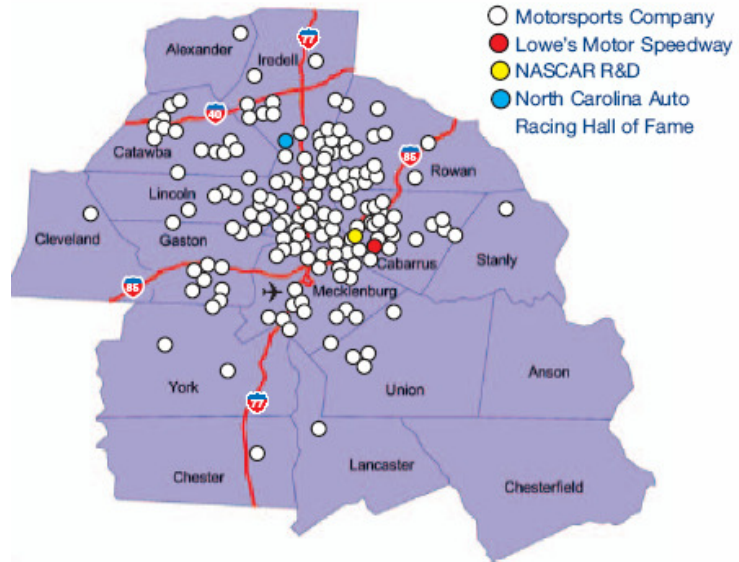
## Charlotte Region Motorsports Highlights

- Over 90% of the NASCAR teams are located within 50 miles of the Charlotte region
- NC economic impact of over \$5.0 billion annually (*UNCC Study, 2004*)
- Regional Motorsports events include:
  - Coca-Cola 600
  - The Nextel All-Star Challenge (formerly The Winston)
  - UAW-GM 500
- Two local wind tunnel facilities are available for accurate aerodynamic testing, one of which boasts a one-of-a-kind yawing rolling road
- Home to NASCAR's Research and Development Site, which houses rules officials, corporate officers, accident investigators, and directors of the truck, Busch and Nextel Cup series
- Location of the Richard Petty Driving Experience – one of the largest motorsports-related driving schools in the U.S.
- Several museums dedicated to racing and racing history in the area

## University of North Carolina at Charlotte Motorsports Program

- Multidisciplinary Program in Motorsports and Automotive Engineering
- Special concentration in motorsports engineering is part of the Bachelor of Science degree in Mechanical Engineering
- Over 160 engineering degrees awarded at UNC Charlotte (2002)
- UNCC Motorsports Program developed more than \$2.25 million in external research related to vehicle technologies
- On-site equipment includes chassis dyno, shock dyno, engine dyno, scales, and Pi/CDS Data Acquisition
- UNCC strengths include vehicle dynamics, aerodynamics, instrumentation, safety and metrology

Home to over 400 motorsports-related companies  
(clusters by zip code)





KimberlyJames  
*Team*

# Local Tax Rates

		2005 LKN AREA TAX RATES			
MECKLENBURG	CONTACT	CITY	COUNTY	TOTAL	
Unincorporated County	704-336-4600	0.1626	0.7567	0.9193	
Charlotte	704-336-7600	0.4200	0.7567	1.1767	
Cornelius	704-892-6031	0.2600	0.7567	1.0167	
Davidson	704-892-7591	0.3250	0.7567	1.0817	
Huntersville	704-875-6541	0.2800	0.7567	1.0367	
Note: "City Rate" for Incorporated County reflects Police District Rate					
Rates will change for 2006 to: Meck. County= .8368 & Davidson City= .345					
Uptown Charlotte	District Rate	CITY	COUNTY	TOTAL	
District 1	0.0174	0.4200	0.7567	1.1941	
District 2	0.0298	0.4200	0.7567	1.2065	
District 3	0.0445	0.4200	0.7567	1.2212	
District 4	0.0668	0.4200	0.7567	1.2435	
District 5	0.0300	0.4200	0.7567	1.2067	
Note: Meck County also charges \$12.00 county + \$45.00 solid waste fee for Single Family & Mobile; \$12.00 county + \$27.00 city for apartments					
Meck County also charges automobile fees: \$30.00 in Charlotte & \$10.00 in Cornelius					
CATAWBA	CONTACT	MUNICIPALITY/CITY	COUNTY	TOTAL	
County Only	828-465-8414		0.4900	0.4900	
Conover, City		0.3800	0.4900	0.8700	
Hickory, City		0.5000	0.4900	0.9900	
Maiden, Town		0.4000	0.4900	0.8600	
Newton, City		0.4400	0.4900	0.9200	
Sherrills Ford/Terrell/Denver (rural rate only)		0.0500	0.4900	0.540	
*Catawba County charges fire district rates instead of municipality rates in rural areas of towns/cities, for those rates & more specific info, please call us.					
There is an additional charge of .15 for downtown property in Newton					
IREDELL	CONTACT	CITY	COUNTY	TOTAL	
County Only	704-878-3010		0.4350		
Mooresville, Town of		0.4900	0.4350	0.9250	
Mooresville, Downtown		0.1600	in addition to town & county		
Mooresville, School Dist		0.1350	in addition to other applicable rates		
Statesville, City of		0.3800	0.4350	0.8150	
Statesville, Downtown		0.1000	in addition to city & county		
Troutman		0.4300	0.4350	0.8650	
Iredell County also charges an All County Fire Rate of .05 & a Solid Waste Fee of \$26.00					
LINCOLN	CONTACT	CITY	COUNTY	TOTAL	
Denver/E.Lincoln		See website**	0.6100	**	
Lincolnton		0.5600	0.6100	1.1700	
**Note: City rate for Denver/E.Lincoln varies depending on Fire District.					
For more specific information or tax rates for areas not shown, please visit the websites for your local county.					