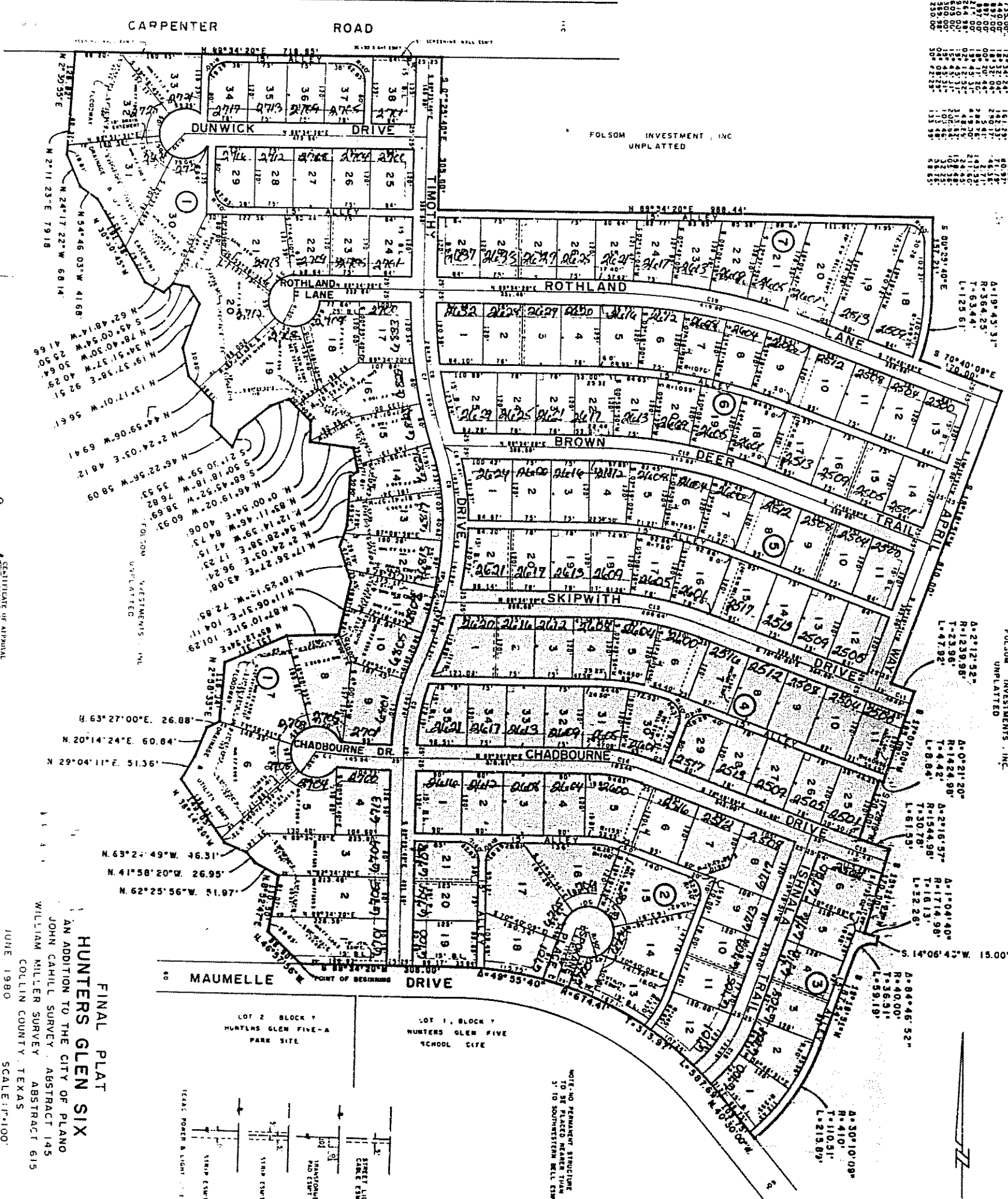


RADIUS	CURVE DATA	CENTRAL ANGLE	ARC	CHORD	TAN
1	1200.00	85.4013°	133.24	133.24	75.00
2	1200.00	85.4013°	133.24	133.24	75.00
3	1200.00	85.4013°	133.24	133.24	75.00
4	1200.00	85.4013°	133.24	133.24	75.00
5	1200.00	85.4013°	133.24	133.24	75.00
6	1200.00	85.4013°	133.24	133.24	75.00
7	1200.00	85.4013°	133.24	133.24	75.00
8	1200.00	85.4013°	133.24	133.24	75.00
9	1200.00	85.4013°	133.24	133.24	75.00
10	1200.00	85.4013°	133.24	133.24	75.00
11	1200.00	85.4013°	133.24	133.24	75.00
12	1200.00	85.4013°	133.24	133.24	75.00
13	1200.00	85.4013°	133.24	133.24	75.00
14	1200.00	85.4013°	133.24	133.24	75.00
15	1200.00	85.4013°	133.24	133.24	75.00
16	1200.00	85.4013°	133.24	133.24	75.00
17	1200.00	85.4013°	133.24	133.24	75.00
18	1200.00	85.4013°	133.24	133.24	75.00
19	1200.00	85.4013°	133.24	133.24	75.00
20	1200.00	85.4013°	133.24	133.24	75.00
21	1200.00	85.4013°	133.24	133.24	75.00
22	1200.00	85.4013°	133.24	133.24	75.00
23	1200.00	85.4013°	133.24	133.24	75.00
24	1200.00	85.4013°	133.24	133.24	75.00
25	1200.00	85.4013°	133.24	133.24	75.00
26	1200.00	85.4013°	133.24	133.24	75.00
27	1200.00	85.4013°	133.24	133.24	75.00
28	1200.00	85.4013°	133.24	133.24	75.00
29	1200.00	85.4013°	133.24	133.24	75.00
30	1200.00	85.4013°	133.24	133.24	75.00
31	1200.00	85.4013°	133.24	133.24	75.00
32	1200.00	85.4013°	133.24	133.24	75.00
33	1200.00	85.4013°	133.24	133.24	75.00
34	1200.00	85.4013°	133.24	133.24	75.00
35	1200.00	85.4013°	133.24	133.24	75.00
36	1200.00	85.4013°	133.24	133.24	75.00
37	1200.00	85.4013°	133.24	133.24	75.00
38	1200.00	85.4013°	133.24	133.24	75.00
39	1200.00	85.4013°	133.24	133.24	75.00
40	1200.00	85.4013°	133.24	133.24	75.00
41	1200.00	85.4013°	133.24	133.24	75.00
42	1200.00	85.4013°	133.24	133.24	75.00
43	1200.00	85.4013°	133.24	133.24	75.00
44	1200.00	85.4013°	133.24	133.24	75.00
45	1200.00	85.4013°	133.24	133.24	75.00
46	1200.00	85.4013°	133.24	133.24	75.00
47	1200.00	85.4013°	133.24	133.24	75.00
48	1200.00	85.4013°	133.24	133.24	75.00
49	1200.00	85.4013°	133.24	133.24	75.00
50	1200.00	85.4013°	133.24	133.24	75.00



FINAL PLAT
HUNTERS GLEN SIX
 AN ADDITION TO THE CITY OF PLANO
 JOHN CAHILL SURVEY ABSTRACT 145
 WILLIAM MILLER SURVEY ABSTRACT 615
 COLLIN COUNTY, TEXAS
 JUNE 1980
 SCALE: 1"=100'
 OWNER
FOLSOM INVESTMENTS, INC.
 4000 SPRING VALLEY ROAD DALLAS, TEXAS
 PHONE: 243-3441

STATE OF TEXAS
 COUNTY OF DALLAS
 I, _____, County Clerk, do hereby certify that the foregoing plat is a true and correct copy of the original plat on file in my office.
 WITNESSED my hand and seal of office this _____ day of _____, 1980.

STATE OF TEXAS
 COUNTY OF DALLAS
 I, _____, County Clerk, do hereby certify that the foregoing plat is a true and correct copy of the original plat on file in my office.
 WITNESSED my hand and seal of office this _____ day of _____, 1980.

STATE OF TEXAS
 COUNTY OF DALLAS
 I, _____, County Clerk, do hereby certify that the foregoing plat is a true and correct copy of the original plat on file in my office.
 WITNESSED my hand and seal of office this _____ day of _____, 1980.

STATE OF TEXAS
 COUNTY OF DALLAS
 I, _____, County Clerk, do hereby certify that the foregoing plat is a true and correct copy of the original plat on file in my office.
 WITNESSED my hand and seal of office this _____ day of _____, 1980.

STATE OF TEXAS
 COUNTY OF DALLAS
 I, _____, County Clerk, do hereby certify that the foregoing plat is a true and correct copy of the original plat on file in my office.
 WITNESSED my hand and seal of office this _____ day of _____, 1980.

STATE OF TEXAS
 COUNTY OF DALLAS
 I, _____, County Clerk, do hereby certify that the foregoing plat is a true and correct copy of the original plat on file in my office.
 WITNESSED my hand and seal of office this _____ day of _____, 1980.