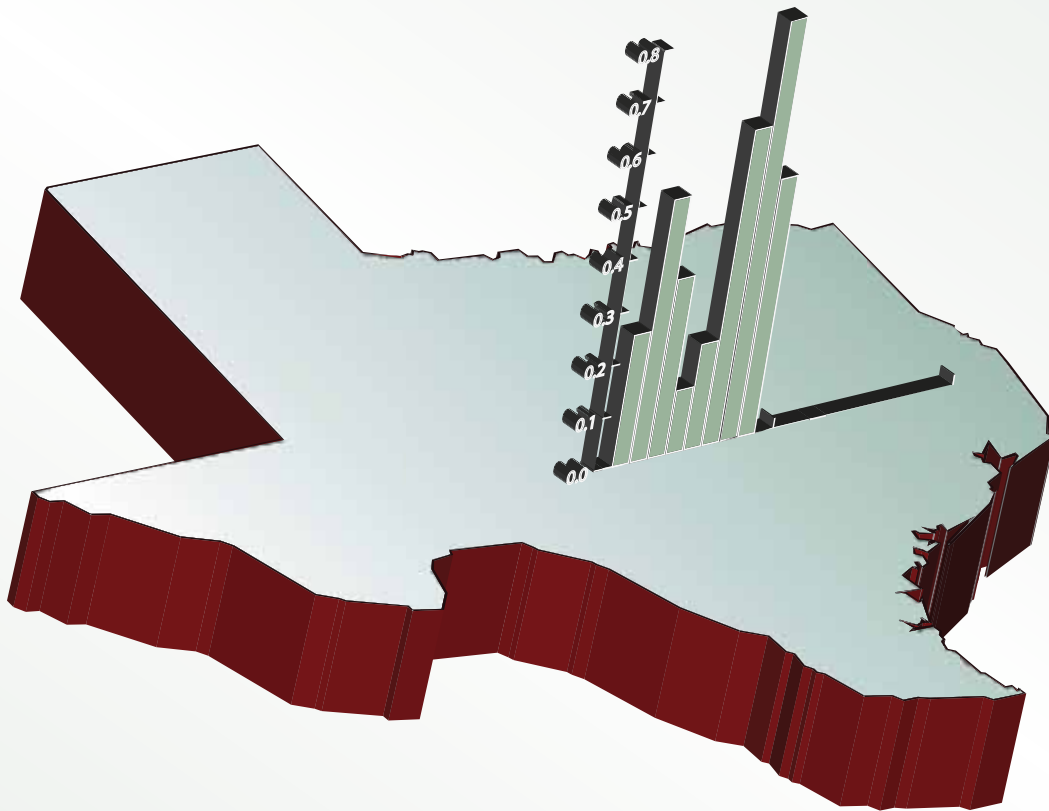


September **MLS** Area Statistics 2010

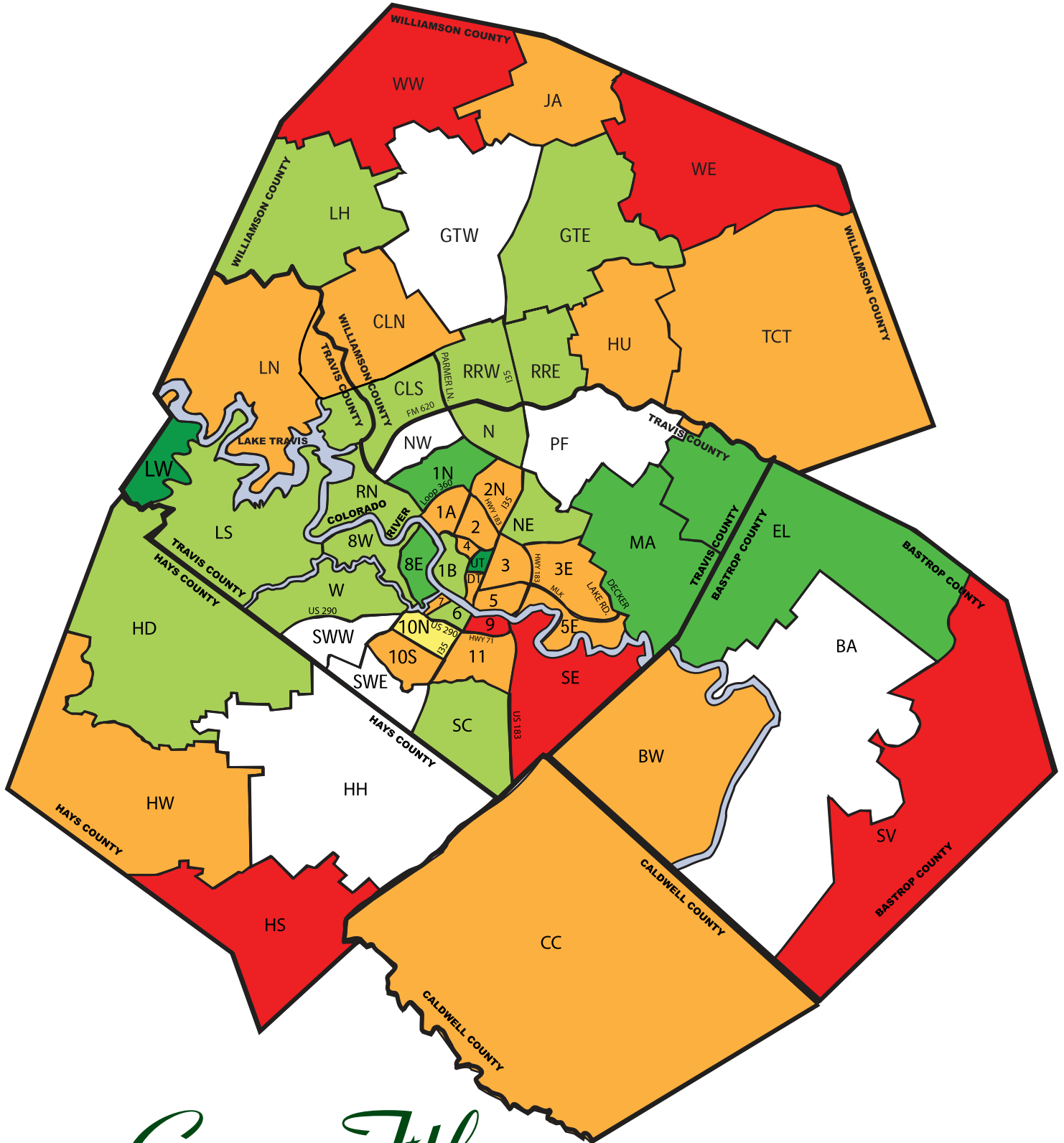
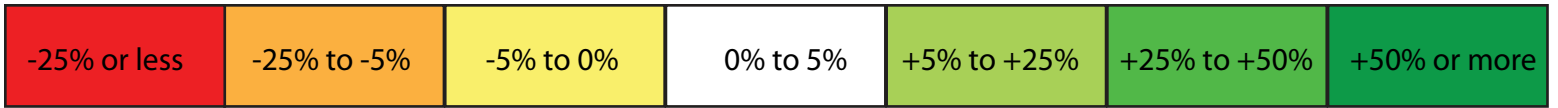


Gracy Title
— a Stewart company

All statistics contained in this book represent single-family residential properties in the Austin MLS, including houses, condos, and townhomes. They do not include multifamily homes, farms, lots, or ranch properties.

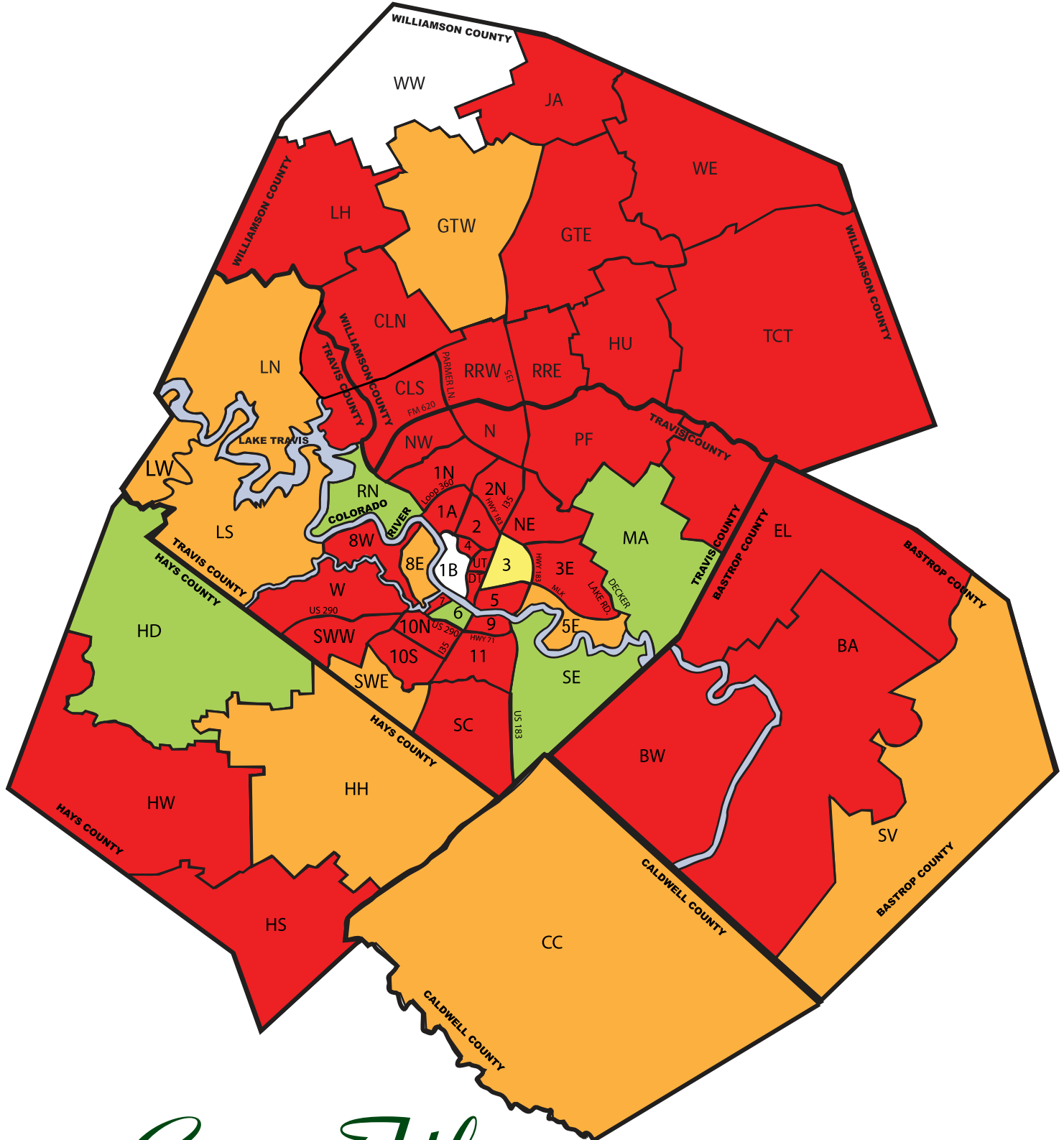
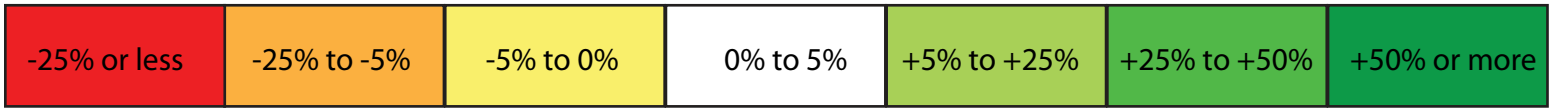
Median Price Change

September 2010 compared to September 2009



Number Sold Change

September 2010 compared to September 2009



Residential MLS Area Statistics

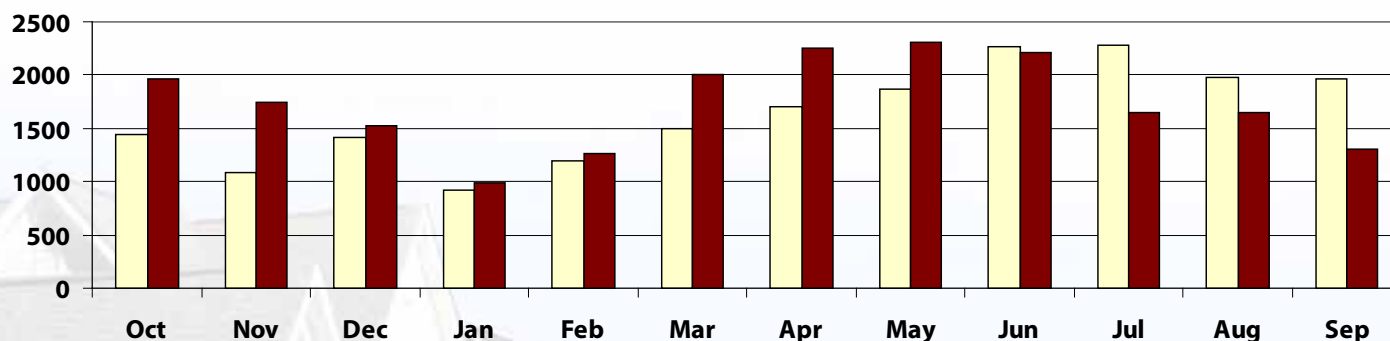
	Median			Average		
	Sep 2010	Sep 2009	% Change	Sep 2010	Sep 2009	% Change
List Price	\$199,900	\$188,800	+ 5.9%	\$259,291	\$245,075	+ 5.8%
Sold Price	\$195,000	\$183,000	+ 6.6%	\$247,505	\$234,565	+ 5.5%
Square Feet	1947	1818	+ 7.1%	2163	2031	+ 6.5%
LP/SF	\$104	\$103	+ 0.4%	\$118	\$119	- 0.8%
SP/SF	\$100	\$100	+ 0.2%	\$113	\$115	- 1.8%
SP/LP	97.1%	97.8%	- 0.7%	96.0%	97.1%	- 1.1%
DOM	55	41	+ 34.1%	78	69	+ 13.4%

Price Range	Quantity	DOM	Price Range	Quantity	DOM
\$149,999 or under	408	68	\$500,000- \$549,999	11	147
\$150,000- \$199,999	269	78	\$550,000- \$599,999	13	94
\$200,000- \$249,999	182	81	\$600,000- \$699,999	21	94
\$250,000- \$299,999	110	82	\$700,000- \$799,999	13	84
\$300,000- \$349,999	88	83	\$800,000- \$899,999	8	193
\$350,000- \$399,999	78	84	\$900,000- \$999,999	4	81
\$400,000- \$449,999	45	69	\$1,000,000 or over	14	118
\$450,000- \$499,999	41	64	Total:	1,305	55

	Sep 2010	Sep 2009	% Change	2010 YTD	2009 YTD	% Change
Sold Listings	1,305	1,959	- 33.4%	15,632	15,678	- 0.3%
Volume	\$322,994,310	\$459,511,962	- 29.7%	\$3,837,001,641	\$3,704,804,092	+ 3.6%

Number of Sales

□ Previous Year ■ Most Recent Year



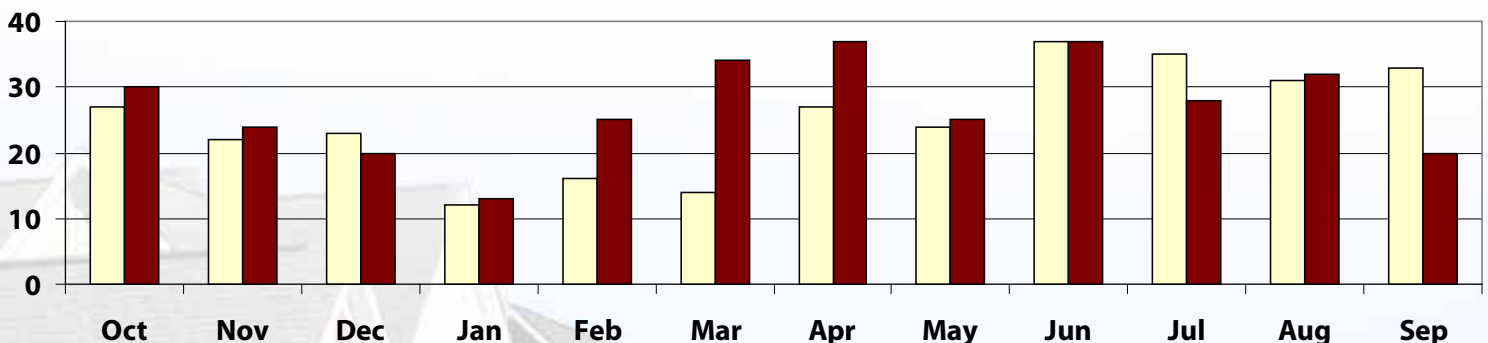
	Median			Average		
	Sep 2010	Sep 2009	% Change	Sep 2010	Sep 2009	% Change
List Price	\$348,950	\$359,900	- 3.0%	\$338,448	\$376,733	- 10.2%
Sold Price	\$340,200	\$360,000	- 5.5%	\$328,293	\$364,301	- 9.9%
Square Feet	1913	1893	+ 1.0%	2068	2153	- 3.9%
LP/SF	\$175	\$170	+ 3.2%	\$165	\$174	- 5.3%
SP/SF	\$170	\$166	+ 2.3%	\$160	\$169	- 5.3%
SP/LP	97.5%	97.3%	+ 0.2%	96.9%	97.0%	- 0.0%
DOM	30	51	- 42.2%	57	69	- 17.9%

Price Range	Quantity	DOM	Price Range	Quantity	DOM
\$149,999 or under	1	151	\$500,000- \$549,999	0	--
\$150,000- \$199,999	0	--	\$550,000- \$599,999	0	--
\$200,000- \$249,999	3	51	\$600,000- \$699,999	0	--
\$250,000- \$299,999	3	33	\$700,000- \$799,999	0	--
\$300,000- \$349,999	6	77	\$800,000- \$899,999	0	--
\$350,000- \$399,999	2	38	\$900,000- \$999,999	0	--
\$400,000- \$449,999	2	24	\$1,000,000 or over	0	--
\$450,000- \$499,999	3	47	Total:	20	30

	Sep 2010	Sep 2009	% Change	2010 YTD	2009 YTD	% Change
Sold Listings	20	33	- 39.4%	251	229	+ 9.6%
Volume	\$6,565,850	\$12,021,922	- 45.4%	\$88,327,451	\$81,030,013	+ 9.0%

Number of Sales

□ Previous Year ■ Most Recent Year



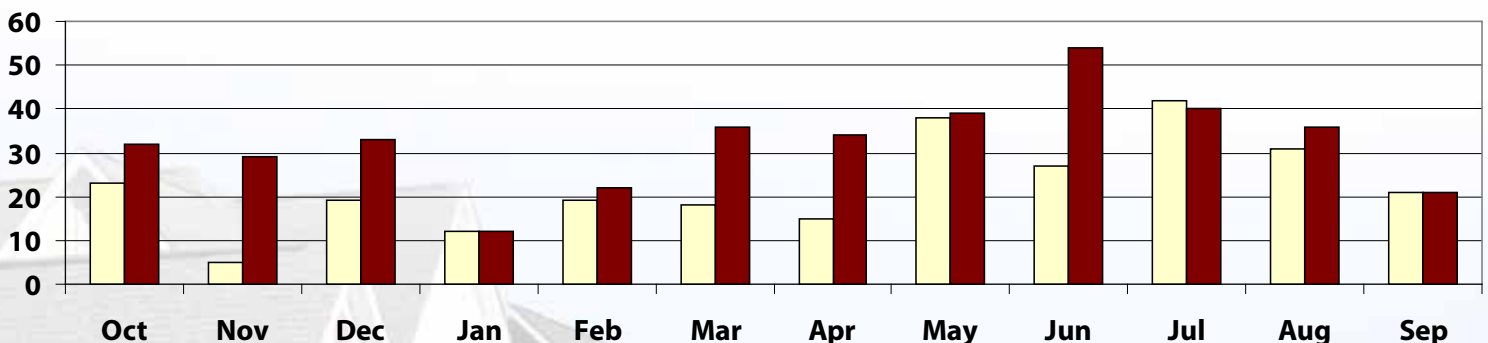
	Median			Average		
	Sep 2010	Sep 2009	% Change	Sep 2010	Sep 2009	% Change
List Price	\$470,000	\$460,000	+ 2.2%	\$616,113	\$545,900	+ 12.9%
Sold Price	\$462,500	\$402,500	+ 14.9%	\$581,732	\$515,456	+ 12.9%
Square Feet	2360	1794	+ 31.5%	2296	2129	+ 7.8%
LP/SF	\$255	\$277	- 7.8%	\$254	\$265	- 3.8%
SP/SF	\$232	\$270	- 14.3%	\$241	\$251	- 3.8%
SP/LP	95.6%	94.6%	+ 1.1%	95.1%	94.5%	+ 0.7%
DOM	58	87	- 33.3%	71	134	- 47.1%

Price Range	Quantity	DOM	Price Range	Quantity	DOM
\$149,999 or under	1	97	\$500,000- \$549,999	0	--
\$150,000- \$199,999	1	6	\$550,000- \$599,999	0	--
\$200,000- \$249,999	3	61	\$600,000- \$699,999	2	5
\$250,000- \$299,999	0	--	\$700,000- \$799,999	0	--
\$300,000- \$349,999	0	--	\$800,000- \$899,999	1	58
\$350,000- \$399,999	1	42	\$900,000- \$999,999	1	44
\$400,000- \$449,999	3	81	\$1,000,000 or over	3	83
\$450,000- \$499,999	5	110	Total:	21	58

	Sep 2010	Sep 2009	% Change	2010 YTD	2009 YTD	% Change
Sold Listings	21	21	0.0%	294	223	+ 31.8%
Volume	\$12,216,372	\$10,824,575	+ 12.9%	\$175,214,527	\$123,224,031	+ 42.2%

Number of Sales

□ Previous Year ■ Most Recent Year



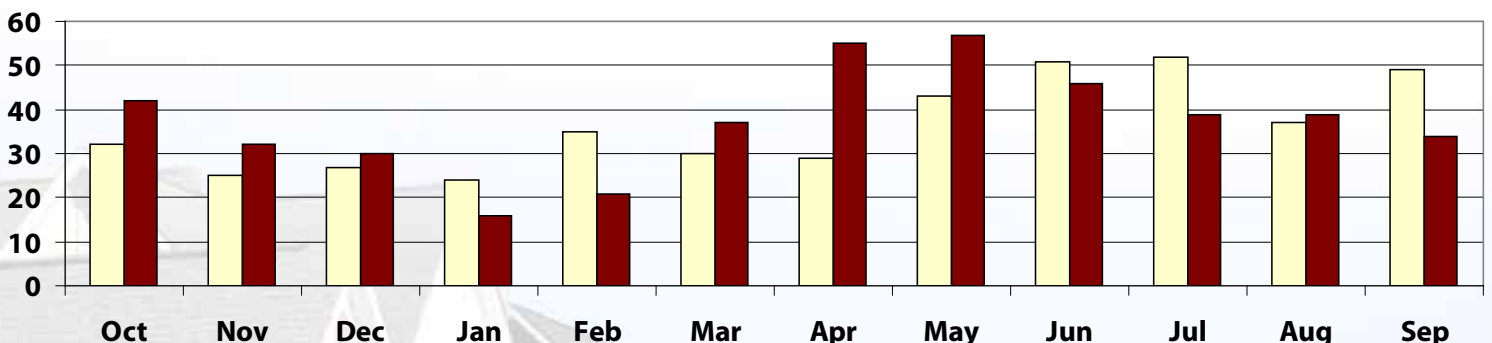
	Median			Average		
	Sep 2010	Sep 2009	% Change	Sep 2010	Sep 2009	% Change
List Price	\$334,950	\$264,999	+ 26.4%	\$342,005	\$290,830	+ 17.6%
Sold Price	\$320,500	\$255,000	+ 25.7%	\$330,348	\$283,359	+ 16.6%
Square Feet	2206	2022	+ 9.1%	2362	2068	+ 14.2%
LP/SF	\$145	\$140	+ 3.6%	\$140	\$141	- 0.4%
SP/SF	\$140	\$138	+ 2.1%	\$136	\$137	- 0.7%
SP/LP	97.7%	97.7%	0.0%	97.4%	97.6%	- 0.2%
DOM	41	23	+ 78.3%	61	35	+ 71.3%

Price Range	Quantity	DOM	Price Range	Quantity	DOM
\$149,999 or under	3	9	\$500,000- \$549,999	1	1
\$150,000- \$199,999	8	105	\$550,000- \$599,999	1	156
\$200,000- \$249,999	3	32	\$600,000- \$699,999	1	41
\$250,000- \$299,999	1	107	\$700,000- \$799,999	1	18
\$300,000- \$349,999	4	53	\$800,000- \$899,999	0	--
\$350,000- \$399,999	3	50	\$900,000- \$999,999	0	--
\$400,000- \$449,999	2	16	\$1,000,000 or over	0	--
\$450,000- \$499,999	6	65	Total:	34	41

	Sep 2010	Sep 2009	% Change	2010 YTD	2009 YTD	% Change
Sold Listings	34	49	- 30.6%	344	350	- 1.7%
Volume	\$11,231,830	\$13,884,600	- 19.1%	\$104,361,387	\$101,263,394	+ 3.1%

Number of Sales

□ Previous Year ■ Most Recent Year



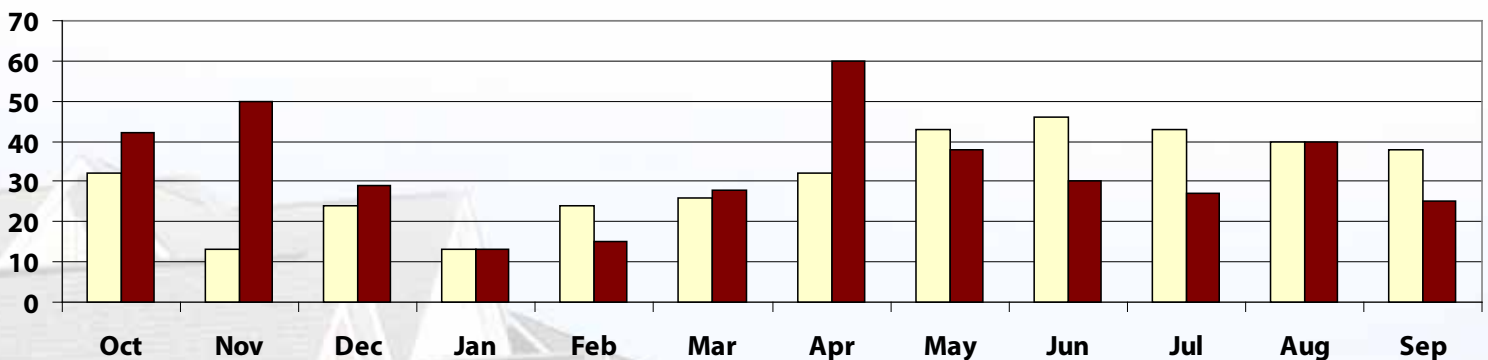
	Median			Average		
	Sep 2010	Sep 2009	% Change	Sep 2010	Sep 2009	% Change
List Price	\$229,000	\$259,450	- 11.7%	\$224,586	\$240,521	- 6.6%
Sold Price	\$209,000	\$245,000	- 14.7%	\$214,932	\$234,582	- 8.4%
Square Feet	1272	1250	+ 1.8%	1339	1317	+ 1.7%
LP/SF	\$169	\$186	- 9.5%	\$170	\$185	- 8.2%
SP/SF	\$162	\$182	- 10.9%	\$163	\$181	- 10.0%
SP/LP	96.1%	98.0%	- 1.9%	95.7%	97.7%	- 2.0%
DOM	43	45	- 4.4%	61	71	- 13.9%

Price Range	Quantity	DOM	Price Range	Quantity	DOM
\$149,999 or under	5	112	\$500,000- \$549,999	0	--
\$150,000- \$199,999	7	65	\$550,000- \$599,999	0	--
\$200,000- \$249,999	4	40	\$600,000- \$699,999	0	--
\$250,000- \$299,999	4	46	\$700,000- \$799,999	0	--
\$300,000- \$349,999	4	28	\$800,000- \$899,999	0	--
\$350,000- \$399,999	1	66	\$900,000- \$999,999	0	--
\$400,000- \$449,999	0	--	\$1,000,000 or over	0	--
\$450,000- \$499,999	0	--	Total:	25	43

	Sep 2010	Sep 2009	% Change	2010 YTD	2009 YTD	% Change
Sold Listings	25	38	- 34.2%	276	305	- 9.5%
Volume	\$5,373,290	\$8,914,123	- 39.7%	\$61,163,453	\$69,369,683	- 11.8%

Number of Sales

□ Previous Year ■ Most Recent Year



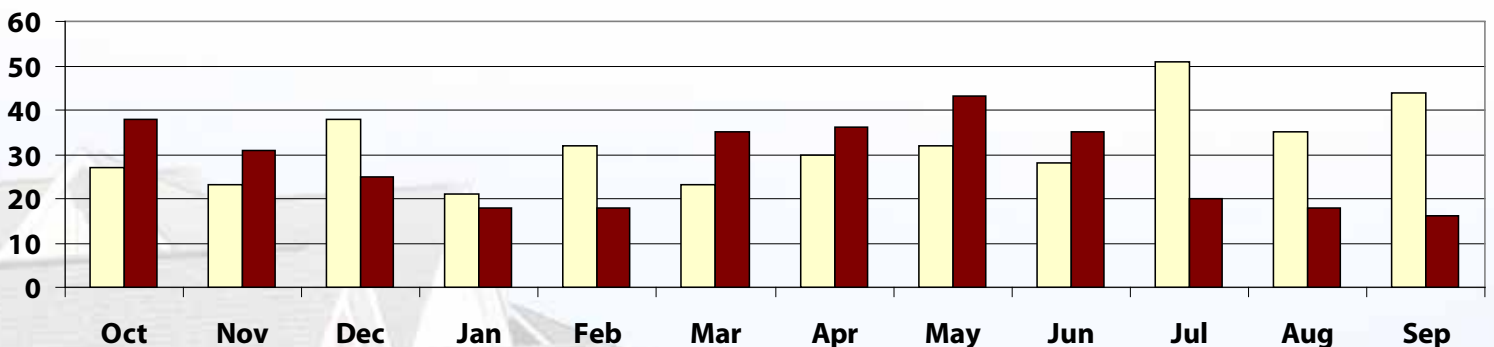
	Median			Average		
	Sep 2010	Sep 2009	% Change	Sep 2010	Sep 2009	% Change
List Price	\$114,950	\$126,200	- 8.9%	\$121,888	\$136,484	- 10.7%
Sold Price	\$112,688	\$126,750	- 11.1%	\$117,651	\$133,793	- 12.1%
Square Feet	1422	1293	+ 10.0%	1348	1353	- 0.4%
LP/SF	\$92	\$103	- 10.3%	\$89	\$99	- 10.6%
SP/SF	\$90	\$103	- 12.3%	\$86	\$98	- 12.0%
SP/LP	97.8%	99.1%	- 1.3%	96.3%	98.1%	- 1.8%
DOM	49	17	+ 188.2%	58	45	+ 30.6%

Price Range	Quantity	DOM	Price Range	Quantity	DOM
\$149,999 or under	12	51	\$500,000- \$549,999	0	--
\$150,000- \$199,999	3	86	\$550,000- \$599,999	0	--
\$200,000- \$249,999	1	63	\$600,000- \$699,999	0	--
\$250,000- \$299,999	0	--	\$700,000- \$799,999	0	--
\$300,000- \$349,999	0	--	\$800,000- \$899,999	0	--
\$350,000- \$399,999	0	--	\$900,000- \$999,999	0	--
\$400,000- \$449,999	0	--	\$1,000,000 or over	0	--
\$450,000- \$499,999	0	--	Total:	16	49

	Sep 2010	Sep 2009	% Change	2010 YTD	2009 YTD	% Change
Sold Listings	16	44	- 63.6%	239	296	- 19.3%
Volume	\$1,882,421	\$5,886,900	- 68.0%	\$28,925,915	\$37,397,223	- 22.7%

Number of Sales

□ Previous Year ■ Most Recent Year



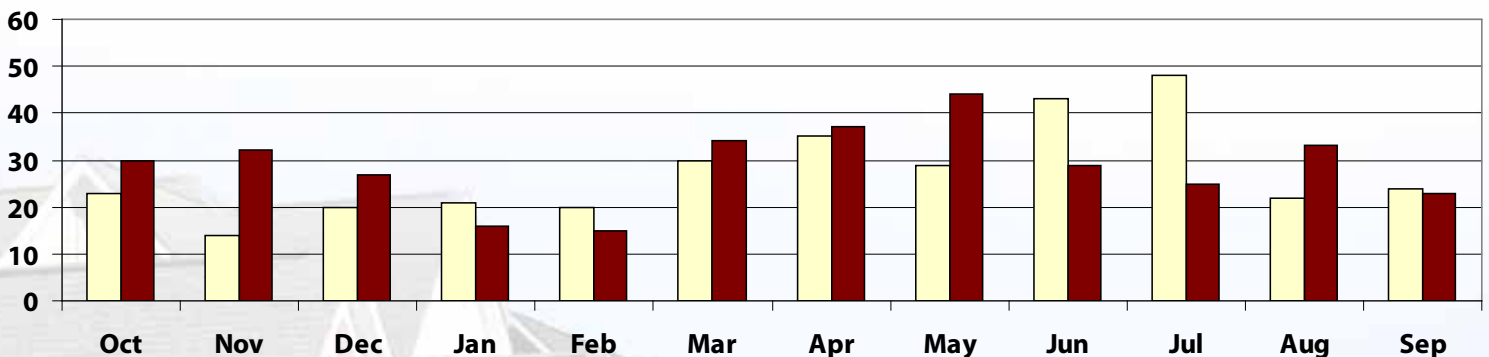
	Median			Average		
	Sep 2010	Sep 2009	% Change	Sep 2010	Sep 2009	% Change
List Price	\$199,000	\$217,250	- 8.4%	\$232,894	\$221,154	+ 5.3%
Sold Price	\$194,600	\$210,300	- 7.5%	\$228,055	\$214,529	+ 6.3%
Square Feet	1548	1503	+ 3.0%	1625	1582	+ 2.7%
LP/SF	\$131	\$142	- 7.5%	\$138	\$146	- 4.9%
SP/SF	\$125	\$137	- 8.3%	\$135	\$141	- 4.2%
SP/LP	97.8%	98.6%	- 0.8%	97.5%	97.0%	+ 0.6%
DOM	55	51	+ 8.9%	81	95	- 14.8%

Price Range	Quantity	DOM	Price Range	Quantity	DOM
\$149,999 or under	5	24	\$500,000- \$549,999	0	--
\$150,000- \$199,999	7	84	\$550,000- \$599,999	0	--
\$200,000- \$249,999	2	78	\$600,000- \$699,999	0	--
\$250,000- \$299,999	2	84	\$700,000- \$799,999	0	--
\$300,000- \$349,999	2	206	\$800,000- \$899,999	0	--
\$350,000- \$399,999	4	76	\$900,000- \$999,999	0	--
\$400,000- \$449,999	1	117	\$1,000,000 or over	0	--
\$450,000- \$499,999	0	--	Total:	23	55

	Sep 2010	Sep 2009	% Change	2010 YTD	2009 YTD	% Change
Sold Listings	23	24	- 4.2%	256	272	- 5.9%
Volume	\$5,245,270	\$5,148,692	+ 1.9%	\$55,743,211	\$59,262,212	- 5.9%

Number of Sales

Previous Year Most Recent Year



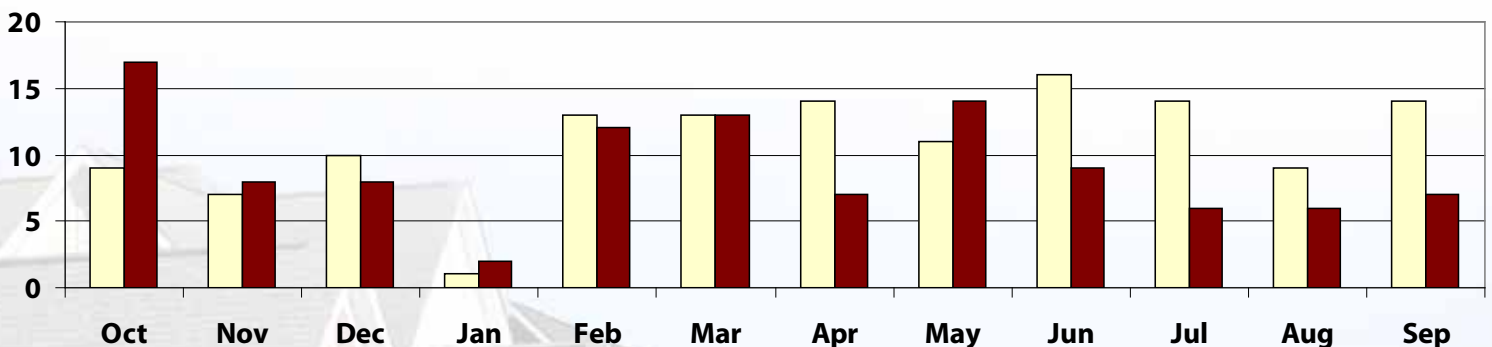
	Median			Average		
	Sep 2010	Sep 2009	% Change	Sep 2010	Sep 2009	% Change
List Price	\$118,550	\$163,703	- 27.6%	\$124,916	\$142,356	- 12.3%
Sold Price	\$118,550	\$152,000	- 22.0%	\$119,966	\$138,347	- 13.3%
Square Feet	1456	1595	- 8.7%	1522	1593	- 4.5%
LP/SF	\$70	\$86	- 19.5%	\$83	\$89	- 7.7%
SP/SF	\$69	\$83	- 16.5%	\$79	\$87	- 9.5%
SP/LP	99.4%	98.1%	+ 1.4%	94.7%	96.8%	- 2.2%
DOM	66	59	+ 12.8%	72	109	- 34.1%

Price Range	Quantity	DOM	Price Range	Quantity	DOM
\$149,999 or under	5	66	\$500,000- \$549,999	0	--
\$150,000- \$199,999	1	44	\$550,000- \$599,999	0	--
\$200,000- \$249,999	1	128	\$600,000- \$699,999	0	--
\$250,000- \$299,999	0	--	\$700,000- \$799,999	0	--
\$300,000- \$349,999	0	--	\$800,000- \$899,999	0	--
\$350,000- \$399,999	0	--	\$900,000- \$999,999	0	--
\$400,000- \$449,999	0	--	\$1,000,000 or over	0	--
\$450,000- \$499,999	0	--	Total:	7	66

	Sep 2010	Sep 2009	% Change	2010 YTD	2009 YTD	% Change
Sold Listings	7	14	- 50.0%	76	105	- 27.6%
Volume	\$839,765	\$1,936,861	- 56.6%	\$8,483,427	\$14,412,924	- 41.1%

Number of Sales

Previous Year
 Most Recent Year



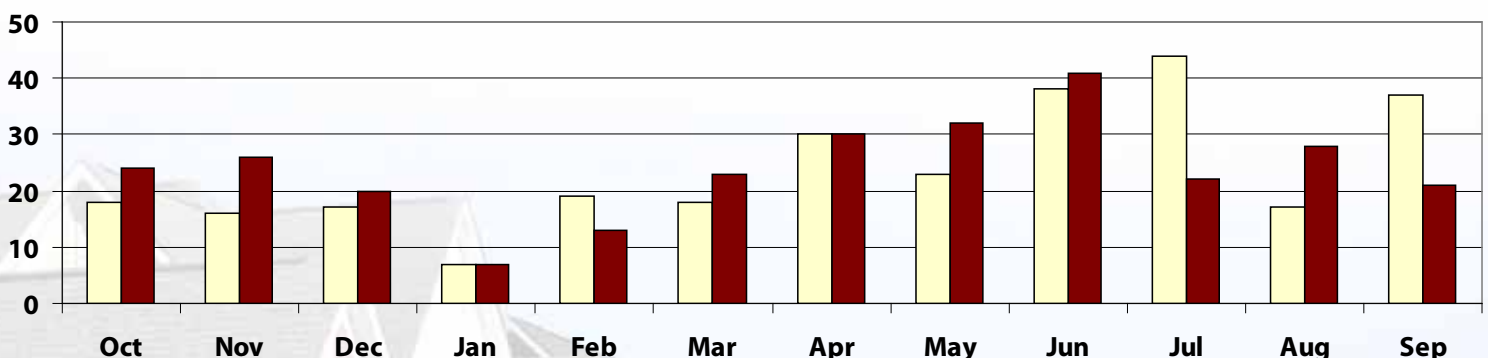
	Median			Average		
	Sep 2010	Sep 2009	% Change	Sep 2010	Sep 2009	% Change
List Price	\$298,000	\$325,000	- 8.3%	\$344,086	\$329,717	+ 4.4%
Sold Price	\$292,350	\$322,500	- 9.3%	\$328,690	\$318,060	+ 3.3%
Square Feet	1700	1379	+ 23.3%	1627	1413	+ 15.2%
LP/SF	\$210	\$230	- 8.7%	\$215	\$234	- 7.9%
SP/SF	\$199	\$227	- 12.1%	\$204	\$225	- 9.3%
SP/LP	96.6%	97.0%	- 0.4%	94.7%	96.4%	- 1.8%
DOM	118	53	+ 122.6%	109	80	+ 36.0%

Price Range	Quantity	DOM	Price Range	Quantity	DOM
\$149,999 or under	1	208	\$500,000- \$549,999	0	--
\$150,000- \$199,999	2	139	\$550,000- \$599,999	1	1
\$200,000- \$249,999	5	119	\$600,000- \$699,999	2	72
\$250,000- \$299,999	3	138	\$700,000- \$799,999	0	--
\$300,000- \$349,999	2	159	\$800,000- \$899,999	0	--
\$350,000- \$399,999	3	90	\$900,000- \$999,999	0	--
\$400,000- \$449,999	2	36	\$1,000,000 or over	0	--
\$450,000- \$499,999	0	--	Total:	21	118

	Sep 2010	Sep 2009	% Change	2010 YTD	2009 YTD	% Change
Sold Listings	21	37	- 43.2%	217	233	- 6.9%
Volume	\$6,902,487	\$11,768,225	- 41.3%	\$66,388,067	\$76,191,760	- 12.9%

Number of Sales

□ Previous Year ■ Most Recent Year



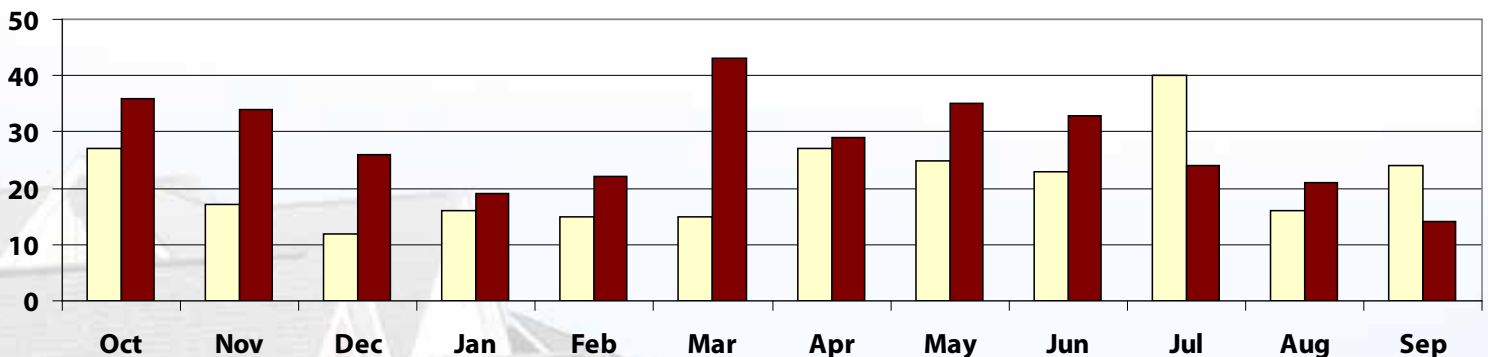
	Median			Average		
	Sep 2010	Sep 2009	% Change	Sep 2010	Sep 2009	% Change
List Price	\$147,400	\$155,000	- 4.9%	\$163,107	\$165,121	- 1.2%
Sold Price	\$141,750	\$158,250	- 10.4%	\$157,029	\$162,898	- 3.6%
Square Feet	1078	1000	+ 7.7%	1103	1096	+ 0.6%
LP/SF	\$171	\$154	+ 10.6%	\$157	\$152	+ 3.0%
SP/SF	\$164	\$155	+ 5.6%	\$150	\$149	+ 0.6%
SP/LP	96.9%	100.0%	- 3.1%	94.7%	97.9%	- 3.3%
DOM	52	54	- 3.7%	114	77	+ 48.2%

Price Range	Quantity	DOM	Price Range	Quantity	DOM
\$149,999 or under	8	122	\$500,000- \$549,999	0	--
\$150,000- \$199,999	3	175	\$550,000- \$599,999	0	--
\$200,000- \$249,999	2	21	\$600,000- \$699,999	0	--
\$250,000- \$299,999	1	52	\$700,000- \$799,999	0	--
\$300,000- \$349,999	0	--	\$800,000- \$899,999	0	--
\$350,000- \$399,999	0	--	\$900,000- \$999,999	0	--
\$400,000- \$449,999	0	--	\$1,000,000 or over	0	--
\$450,000- \$499,999	0	--	Total:	14	52

	Sep 2010	Sep 2009	% Change	2010 YTD	2009 YTD	% Change
Sold Listings	14	24	- 41.7%	240	201	+ 19.4%
Volume	\$2,198,400	\$3,909,550	- 43.8%	\$43,063,957	\$35,640,970	+ 20.8%

Number of Sales

Previous Year Most Recent Year



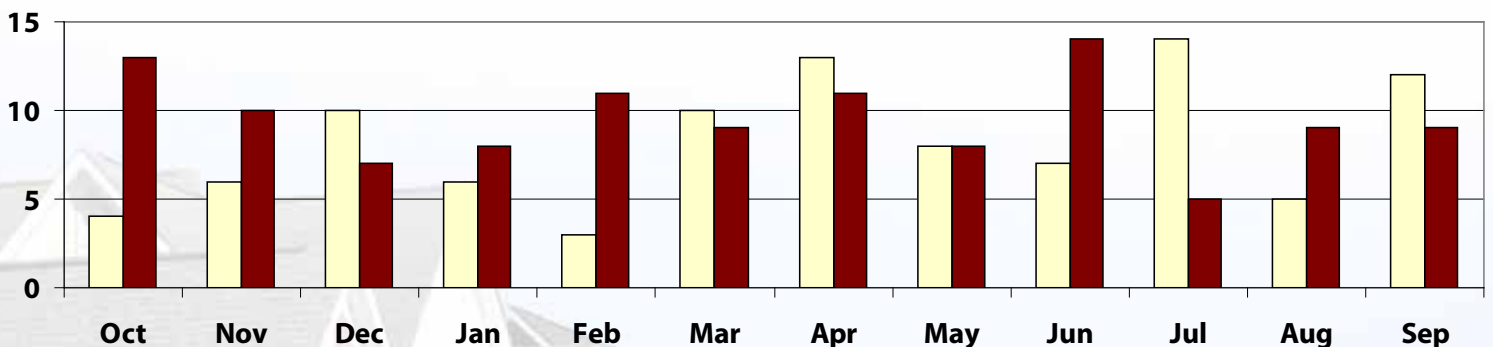
	Median			Average		
	Sep 2010	Sep 2009	% Change	Sep 2010	Sep 2009	% Change
List Price	\$89,000	\$106,555	- 16.5%	\$95,655	\$111,328	- 14.1%
Sold Price	\$87,800	\$108,499	- 19.1%	\$95,851	\$112,019	- 14.4%
Square Feet	1335	1618	- 17.5%	1416	1534	- 7.7%
LP/SF	\$62	\$75	- 17.5%	\$69	\$75	- 7.2%
SP/SF	\$66	\$75	- 12.3%	\$70	\$75	- 7.2%
SP/LP	103.5%	100.0%	+ 3.5%	99.3%	100.6%	- 1.3%
DOM	76	35	+ 117.1%	84	48	+ 73.3%

Price Range	Quantity	DOM	Price Range	Quantity	DOM
\$149,999 or under	9	84	\$500,000- \$549,999	0	--
\$150,000- \$199,999	0	--	\$550,000- \$599,999	0	--
\$200,000- \$249,999	0	--	\$600,000- \$699,999	0	--
\$250,000- \$299,999	0	--	\$700,000- \$799,999	0	--
\$300,000- \$349,999	0	--	\$800,000- \$899,999	0	--
\$350,000- \$399,999	0	--	\$900,000- \$999,999	0	--
\$400,000- \$449,999	0	--	\$1,000,000 or over	0	--
\$450,000- \$499,999	0	--	Total:	9	76

	Sep 2010	Sep 2009	% Change	2010 YTD	2009 YTD	% Change
Sold Listings	9	12	- 25.0%	84	78	+ 7.7%
Volume	\$862,662	\$1,344,223	- 35.8%	\$8,764,402	\$8,251,263	+ 6.2%

Number of Sales

□ Previous Year ■ Most Recent Year



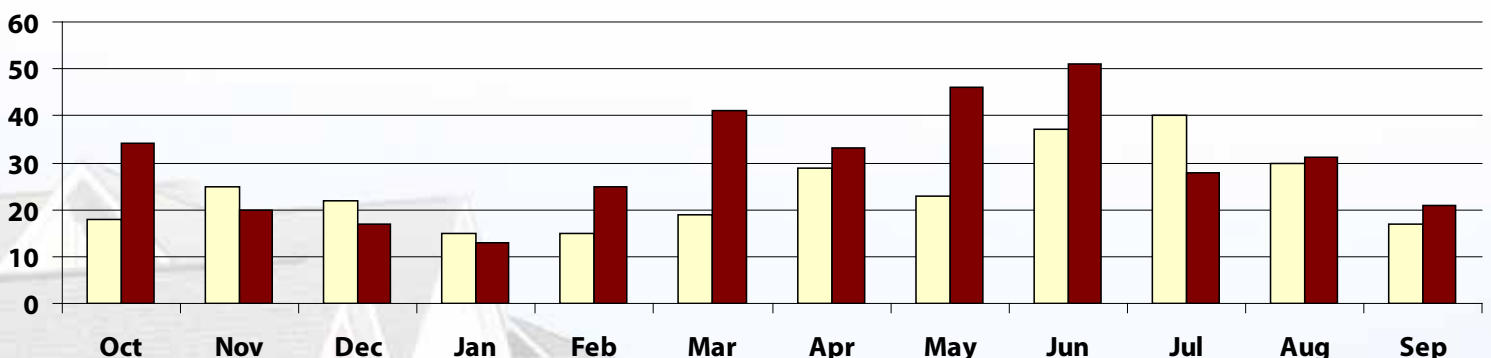
	Median			Average		
	Sep 2010	Sep 2009	% Change	Sep 2010	Sep 2009	% Change
List Price	\$379,900	\$338,000	+ 12.4%	\$358,847	\$325,571	+ 10.2%
Sold Price	\$365,000	\$333,500	+ 9.4%	\$338,605	\$315,138	+ 7.4%
Square Feet	1579	1185	+ 33.2%	1611	1396	+ 15.4%
LP/SF	\$216	\$245	- 11.9%	\$220	\$229	- 3.9%
SP/SF	\$207	\$236	- 12.4%	\$207	\$221	- 6.1%
SP/LP	95.0%	96.3%	- 1.3%	94.2%	96.1%	- 2.0%
DOM	66	89	- 25.8%	92	95	- 2.8%

Price Range	Quantity	DOM	Price Range	Quantity	DOM
\$149,999 or under	3	115	\$500,000- \$549,999	0	--
\$150,000- \$199,999	1	49	\$550,000- \$599,999	1	171
\$200,000- \$249,999	4	154	\$600,000- \$699,999	0	--
\$250,000- \$299,999	0	--	\$700,000- \$799,999	0	--
\$300,000- \$349,999	1	66	\$800,000- \$899,999	0	--
\$350,000- \$399,999	4	87	\$900,000- \$999,999	0	--
\$400,000- \$449,999	2	31	\$1,000,000 or over	0	--
\$450,000- \$499,999	5	57	Total:	21	66

	Sep 2010	Sep 2009	% Change	2010 YTD	2009 YTD	% Change
Sold Listings	21	17	+ 23.5%	289	225	+ 28.4%
Volume	\$7,110,700	\$5,357,350	+ 32.7%	\$88,871,015	\$65,549,884	+ 35.6%

Number of Sales

□ Previous Year ■ Most Recent Year



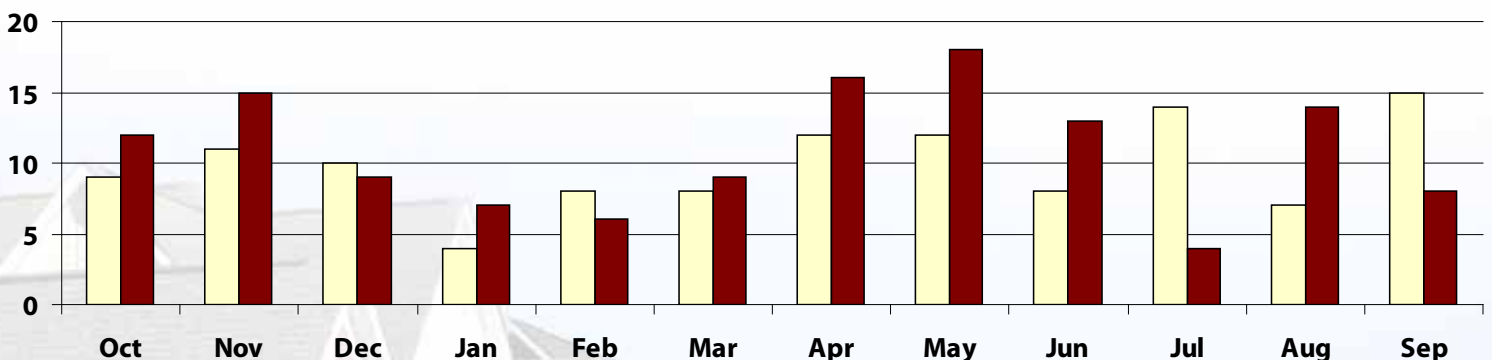
	Median			Average		
	Sep 2010	Sep 2009	% Change	Sep 2010	Sep 2009	% Change
List Price	\$305,000	\$329,000	- 7.3%	\$360,363	\$391,593	- 8.0%
Sold Price	\$298,000	\$325,000	- 8.3%	\$333,375	\$374,437	- 11.0%
Square Feet	1251	1416	- 11.7%	1426	1571	- 9.2%
LP/SF	\$244	\$243	+ 0.4%	\$252	\$257	- 2.0%
SP/SF	\$246	\$235	+ 4.4%	\$237	\$247	- 4.2%
SP/LP	95.4%	96.3%	- 1.0%	93.2%	96.1%	- 3.0%
DOM	40	49	- 18.4%	53	79	- 32.7%

Price Range	Quantity	DOM	Price Range	Quantity	DOM
\$149,999 or under	0	--	\$500,000- \$549,999	0	--
\$150,000- \$199,999	1	37	\$550,000- \$599,999	0	--
\$200,000- \$249,999	1	6	\$600,000- \$699,999	0	--
\$250,000- \$299,999	2	67	\$700,000- \$799,999	1	70
\$300,000- \$349,999	3	60	\$800,000- \$899,999	0	--
\$350,000- \$399,999	0	--	\$900,000- \$999,999	0	--
\$400,000- \$449,999	0	--	\$1,000,000 or over	0	--
\$450,000- \$499,999	0	--	Total:	8	40

	Sep 2010	Sep 2009	% Change	2010 YTD	2009 YTD	% Change
Sold Listings	8	15	- 46.7%	95	88	+ 8.0%
Volume	\$2,667,000	\$5,616,550	- 52.5%	\$36,920,044	\$33,243,133	+ 11.1%

Number of Sales

□ Previous Year ■ Most Recent Year



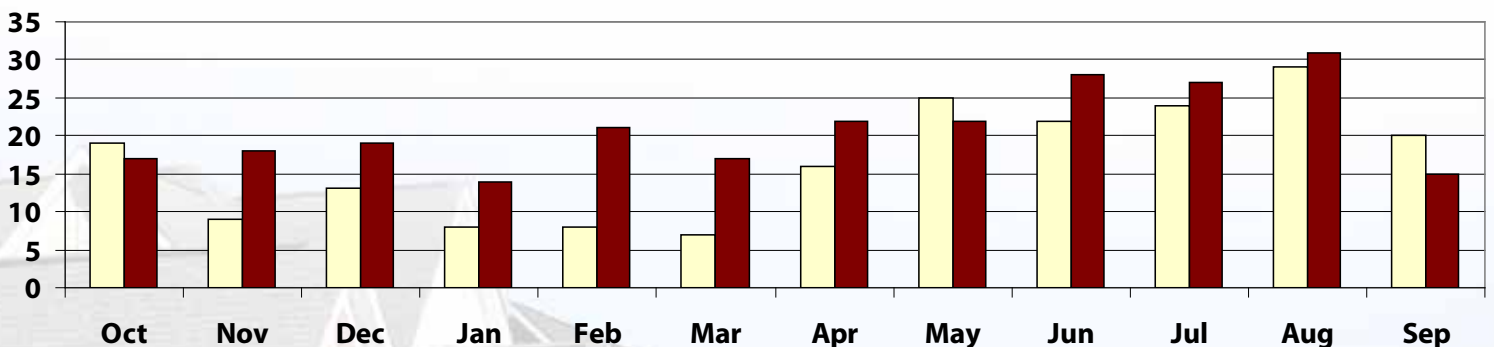
	Median			Average		
	Sep 2010	Sep 2009	% Change	Sep 2010	Sep 2009	% Change
List Price	\$825,000	\$534,675	+ 54.3%	\$856,327	\$1,202,558	- 28.8%
Sold Price	\$750,000	\$524,000	+ 43.1%	\$801,696	\$1,056,665	- 24.1%
Square Feet	3373	2797	+ 20.6%	3516	3820	- 8.0%
LP/SF	\$245	\$227	+ 7.6%	\$239	\$266	- 9.9%
SP/SF	\$222	\$211	+ 5.1%	\$225	\$242	- 6.8%
SP/LP	95.1%	94.4%	+ 0.8%	94.5%	92.5%	+ 2.2%
DOM	43	50	- 14.0%	77	98	- 21.4%

Price Range	Quantity	DOM	Price Range	Quantity	DOM
\$149,999 or under	0	--	\$500,000- \$549,999	0	--
\$150,000- \$199,999	0	--	\$550,000- \$599,999	2	132
\$200,000- \$249,999	0	--	\$600,000- \$699,999	2	54
\$250,000- \$299,999	0	--	\$700,000- \$799,999	1	24
\$300,000- \$349,999	0	--	\$800,000- \$899,999	3	119
\$350,000- \$399,999	0	--	\$900,000- \$999,999	0	--
\$400,000- \$449,999	2	85	\$1,000,000 or over	4	51
\$450,000- \$499,999	1	28	Total:	15	43

	Sep 2010	Sep 2009	% Change	2010 YTD	2009 YTD	% Change
Sold Listings	15	20	- 25.0%	197	159	+ 23.9%
Volume	\$12,025,446	\$21,133,300	- 43.1%	\$147,218,365	\$120,704,560	+ 22.0%

Number of Sales

□ Previous Year ■ Most Recent Year



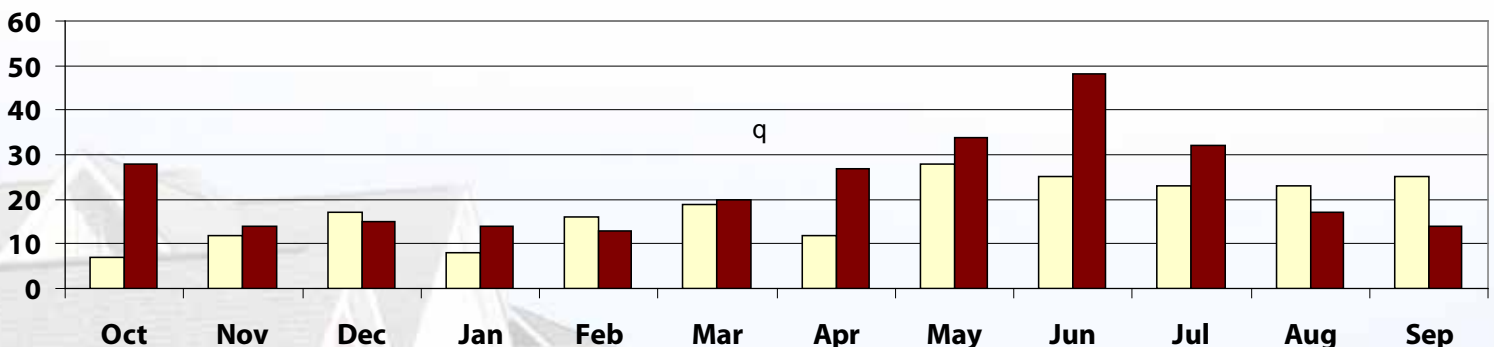
	Median			Average		
	Sep 2010	Sep 2009	% Change	Sep 2010	Sep 2009	% Change
List Price	\$532,000	\$495,000	+ 7.5%	\$566,950	\$591,692	- 4.2%
Sold Price	\$533,500	\$478,050	+ 11.6%	\$542,143	\$556,890	- 2.6%
Square Feet	3253	3190	+ 2.0%	3408	3345	+ 1.9%
LP/SF	\$166	\$163	+ 2.1%	\$169	\$170	- 0.6%
SP/SF	\$156	\$158	- 0.9%	\$163	\$162	+ 0.3%
SP/LP	96.8%	97.0%	- 0.2%	95.7%	95.3%	+ 0.4%
DOM	53	50	+ 5.0%	69	75	- 7.8%

Price Range	Quantity	DOM	Price Range	Quantity	DOM
\$149,999 or under	0	--	\$500,000- \$549,999	0	--
\$150,000- \$199,999	0	--	\$550,000- \$599,999	3	46
\$200,000- \$249,999	0	--	\$600,000- \$699,999	0	--
\$250,000- \$299,999	0	--	\$700,000- \$799,999	4	85
\$300,000- \$349,999	2	80	\$800,000- \$899,999	0	--
\$350,000- \$399,999	1	47	\$900,000- \$999,999	0	--
\$400,000- \$449,999	2	114	\$1,000,000 or over	0	--
\$450,000- \$499,999	2	27	Total:	14	53

	Sep 2010	Sep 2009	% Change	2010 YTD	2009 YTD	% Change
Sold Listings	14	25	- 44.0%	219	179	+ 22.3%
Volume	\$7,590,000	\$13,922,250	- 45.5%	\$138,477,520	\$107,013,030	+ 29.4%

Number of Sales

□ Previous Year ■ Most Recent Year



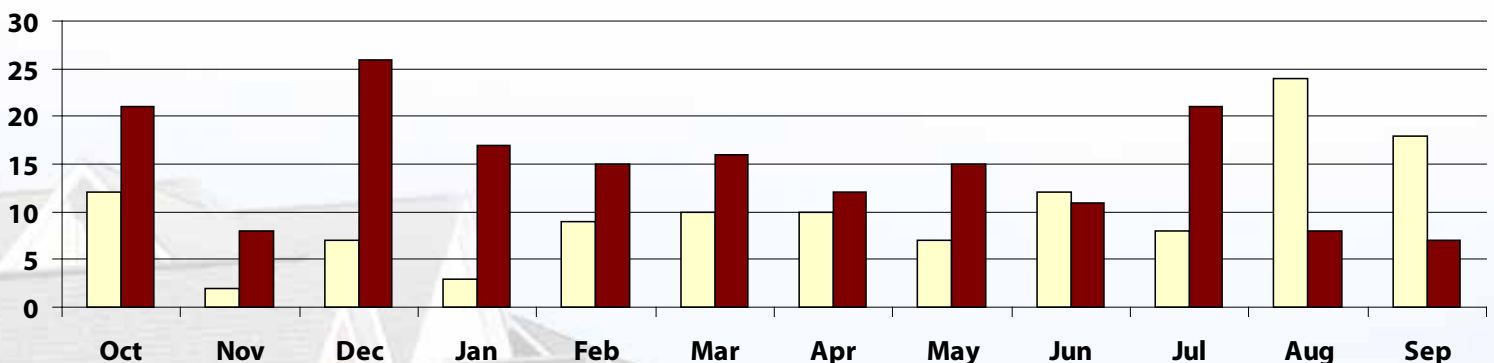
	Median			Average		
	Sep 2010	Sep 2009	% Change	Sep 2010	Sep 2009	% Change
List Price	\$35,750	\$114,950	- 68.9%	\$78,814	\$111,228	- 29.1%
Sold Price	\$34,000	\$112,500	- 69.8%	\$76,143	\$108,678	- 29.9%
Square Feet	802	1097	- 26.9%	901	1144	- 21.2%
LP/SF	\$90	\$97	- 7.2%	\$79	\$99	- 20.0%
SP/SF	\$80	\$95	- 15.5%	\$77	\$96	- 19.7%
SP/LP	100.0%	96.6%	+ 3.5%	98.0%	98.0%	+ 0.0%
DOM	17	40	- 57.0%	24	49	- 50.3%

Price Range	Quantity	DOM	Price Range	Quantity	DOM
\$149,999 or under	6	27	\$500,000- \$549,999	0	--
\$150,000- \$199,999	1	9	\$550,000- \$599,999	0	--
\$200,000- \$249,999	0	--	\$600,000- \$699,999	0	--
\$250,000- \$299,999	0	--	\$700,000- \$799,999	0	--
\$300,000- \$349,999	0	--	\$800,000- \$899,999	0	--
\$350,000- \$399,999	0	--	\$900,000- \$999,999	0	--
\$400,000- \$449,999	0	--	\$1,000,000 or over	0	--
\$450,000- \$499,999	0	--	Total:	7	17

	Sep 2010	Sep 2009	% Change	2010 YTD	2009 YTD	% Change
Sold Listings	7	18	- 61.1%	122	101	+ 20.8%
Volume	\$533,000	\$1,956,210	- 72.8%	\$13,043,656	\$11,721,780	+ 11.3%

Number of Sales

□ Previous Year ■ Most Recent Year



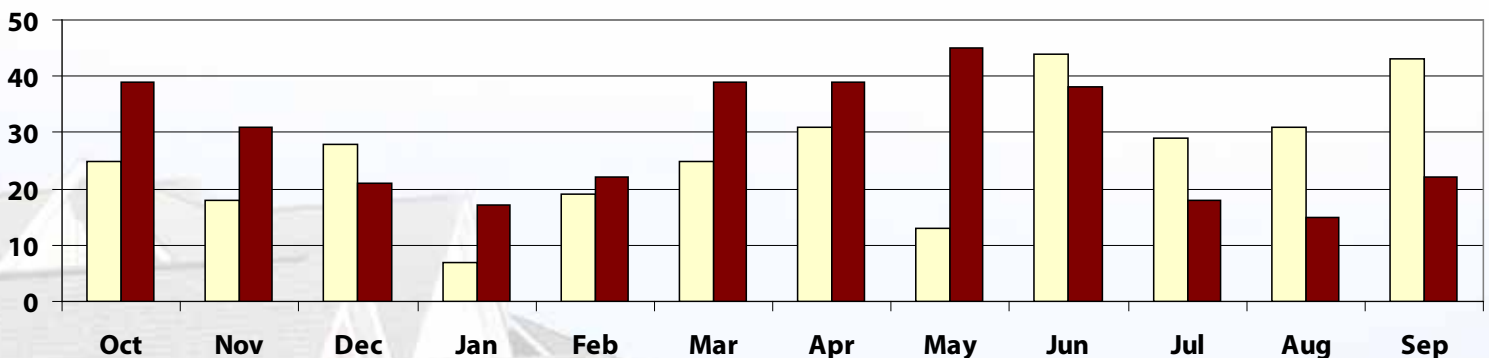
	Median			Average		
	Sep 2010	Sep 2009	% Change	Sep 2010	Sep 2009	% Change
List Price	\$162,400	\$175,000	- 7.2%	\$193,485	\$190,062	+ 1.8%
Sold Price	\$161,750	\$168,000	- 3.7%	\$187,578	\$185,506	+ 1.1%
Square Feet	1242	1283	- 3.2%	1466	1324	+ 10.8%
LP/SF	\$130	\$140	- 7.2%	\$130	\$147	- 11.8%
SP/SF	\$127	\$138	- 8.4%	\$126	\$144	- 12.4%
SP/LP	98.0%	97.4%	+ 0.6%	96.8%	97.9%	- 1.1%
DOM	40	45	- 11.1%	58	77	- 25.3%

Price Range	Quantity	DOM	Price Range	Quantity	DOM
\$149,999 or under	9	76	\$500,000- \$549,999	1	35
\$150,000- \$199,999	6	29	\$550,000- \$599,999	0	--
\$200,000- \$249,999	5	62	\$600,000- \$699,999	0	--
\$250,000- \$299,999	0	--	\$700,000- \$799,999	0	--
\$300,000- \$349,999	0	--	\$800,000- \$899,999	0	--
\$350,000- \$399,999	0	--	\$900,000- \$999,999	0	--
\$400,000- \$449,999	0	--	\$1,000,000 or over	0	--
\$450,000- \$499,999	1	70	Total:	22	40

	Sep 2010	Sep 2009	% Change	2010 YTD	2009 YTD	% Change
Sold Listings	22	43	- 48.8%	255	242	+ 5.4%
Volume	\$4,126,711	\$7,976,765	- 48.3%	\$45,419,628	\$43,279,993	+ 4.9%

Number of Sales

Previous Year Most Recent Year



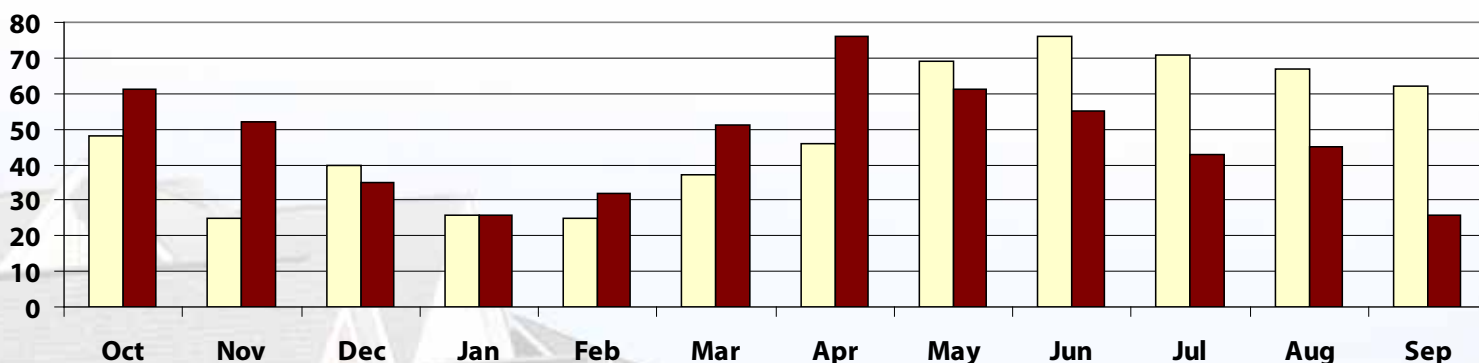
	Median			Average		
	Sep 2010	Sep 2009	% Change	Sep 2010	Sep 2009	% Change
List Price	\$164,995	\$172,400	- 4.3%	\$180,985	\$176,284	+ 2.7%
Sold Price	\$162,495	\$173,450	- 6.3%	\$174,650	\$174,099	+ 0.3%
Square Feet	1518	1515	+ 0.2%	1568	1586	- 1.1%
LP/SF	\$116	\$114	+ 1.6%	\$116	\$115	+ 1.0%
SP/SF	\$115	\$115	+ 0.2%	\$112	\$113	- 1.0%
SP/LP	97.5%	99.4%	- 1.9%	96.9%	98.8%	- 1.9%
DOM	38	11	+ 240.9%	49	24	+ 108.1%

Price Range	Quantity	DOM	Price Range	Quantity	DOM
\$149,999 or under	6	61	\$500,000- \$549,999	0	--
\$150,000- \$199,999	15	49	\$550,000- \$599,999	0	--
\$200,000- \$249,999	3	46	\$600,000- \$699,999	0	--
\$250,000- \$299,999	2	24	\$700,000- \$799,999	0	--
\$300,000- \$349,999	0	--	\$800,000- \$899,999	0	--
\$350,000- \$399,999	0	--	\$900,000- \$999,999	0	--
\$400,000- \$449,999	0	--	\$1,000,000 or over	0	--
\$450,000- \$499,999	0	--	Total:	26	38

	Sep 2010	Sep 2009	% Change	2010 YTD	2009 YTD	% Change
Sold Listings	26	62	- 58.1%	415	479	- 13.4%
Volume	\$4,540,908	\$10,794,126	- 57.9%	\$73,739,090	\$85,445,410	- 13.7%

Number of Sales

□ Previous Year ■ Most Recent Year



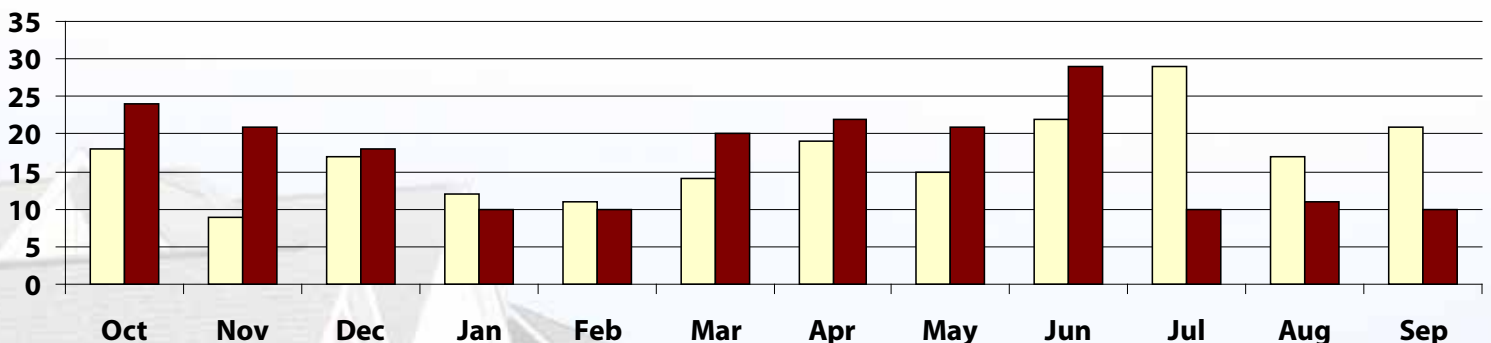
	Median			Average		
	Sep 2010	Sep 2009	% Change	Sep 2010	Sep 2009	% Change
List Price	\$107,450	\$117,975	- 8.9%	\$110,473	\$123,223	- 10.3%
Sold Price	\$106,500	\$112,900	- 5.7%	\$106,800	\$119,975	- 11.0%
Square Feet	1419	1333	+ 6.4%	1477	1396	+ 5.8%
LP/SF	\$76	\$90	- 15.6%	\$76	\$89	- 14.7%
SP/SF	\$73	\$89	- 17.8%	\$74	\$87	- 15.2%
SP/LP	98.7%	97.6%	+ 1.1%	97.3%	97.6%	- 0.3%
DOM	66	43	+ 53.5%	81	48	+ 68.0%

Price Range	Quantity	DOM	Price Range	Quantity	DOM
\$149,999 or under	9	51	\$500,000- \$549,999	0	--
\$150,000- \$199,999	1	346	\$550,000- \$599,999	0	--
\$200,000- \$249,999	0	--	\$600,000- \$699,999	0	--
\$250,000- \$299,999	0	--	\$700,000- \$799,999	0	--
\$300,000- \$349,999	0	--	\$800,000- \$899,999	0	--
\$350,000- \$399,999	0	--	\$900,000- \$999,999	0	--
\$400,000- \$449,999	0	--	\$1,000,000 or over	0	--
\$450,000- \$499,999	0	--	Total:	10	66

	Sep 2010	Sep 2009	% Change	2010 YTD	2009 YTD	% Change
Sold Listings	10	21	- 52.4%	143	160	- 10.6%
Volume	\$1,068,000	\$2,519,480	- 57.6%	\$15,566,867	\$17,379,947	- 10.4%

Number of Sales

□ Previous Year ■ Most Recent Year



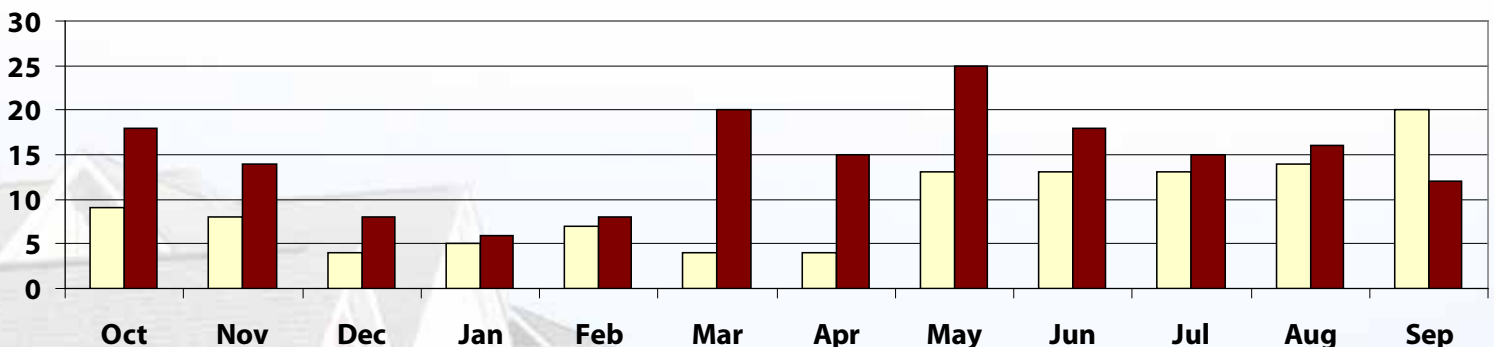
	Median			Average		
	Sep 2010	Sep 2009	% Change	Sep 2010	Sep 2009	% Change
List Price	\$224,450	\$283,500	- 20.8%	\$231,167	\$306,325	- 24.5%
Sold Price	\$214,945	\$278,500	- 22.8%	\$221,745	\$287,025	- 22.7%
Square Feet	764	730	+ 4.6%	786	828	- 5.1%
LP/SF	\$283	\$320	- 11.7%	\$294	\$354	- 17.1%
SP/SF	\$265	\$298	- 11.2%	\$282	\$338	- 16.5%
SP/LP	95.4%	97.5%	- 2.2%	96.3%	95.7%	+ 0.6%
DOM	83	49	+ 71.1%	113	62	+ 82.9%

Price Range	Quantity	DOM	Price Range	Quantity	DOM
\$149,999 or under	1	79	\$500,000- \$549,999	0	--
\$150,000- \$199,999	4	67	\$550,000- \$599,999	0	--
\$200,000- \$249,999	4	169	\$600,000- \$699,999	0	--
\$250,000- \$299,999	2	151	\$700,000- \$799,999	0	--
\$300,000- \$349,999	1	25	\$800,000- \$899,999	0	--
\$350,000- \$399,999	0	--	\$900,000- \$999,999	0	--
\$400,000- \$449,999	0	--	\$1,000,000 or over	0	--
\$450,000- \$499,999	0	--	Total:	12	83

	Sep 2010	Sep 2009	% Change	2010 YTD	2009 YTD	% Change
Sold Listings	12	20	- 40.0%	135	93	+ 45.2%
Volume	\$2,660,936	\$5,740,496	- 53.6%	\$46,940,281	\$29,828,203	+ 57.4%

Number of Sales

□ Previous Year ■ Most Recent Year



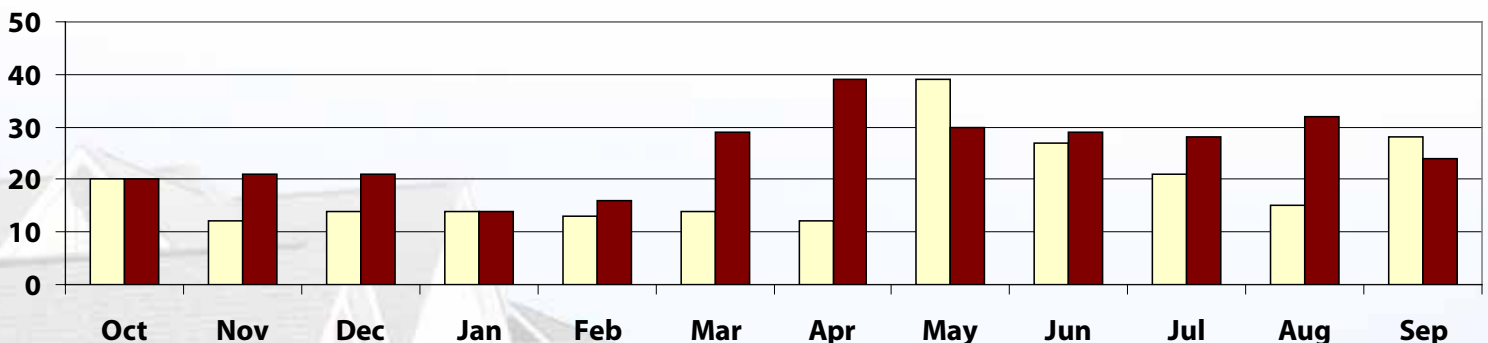
	Median			Average		
	Sep 2010	Sep 2009	% Change	Sep 2010	Sep 2009	% Change
List Price	\$158,000	\$177,400	- 10.9%	\$193,923	\$323,003	- 40.0%
Sold Price	\$140,250	\$171,500	- 18.2%	\$184,845	\$284,700	- 35.1%
Square Feet	1401	1545	- 9.3%	1599	1915	- 16.5%
LP/SF	\$108	\$107	+ 0.6%	\$113	\$132	- 14.8%
SP/SF	\$106	\$104	+ 2.5%	\$109	\$124	- 12.2%
SP/LP	97.2%	94.9%	+ 2.5%	96.2%	93.5%	+ 2.9%
DOM	87	67	+ 30.8%	96	85	+ 13.0%

Price Range	Quantity	DOM	Price Range	Quantity	DOM
\$149,999 or under	13	83	\$500,000- \$549,999	0	--
\$150,000- \$199,999	5	99	\$550,000- \$599,999	0	--
\$200,000- \$249,999	2	66	\$600,000- \$699,999	0	--
\$250,000- \$299,999	1	69	\$700,000- \$799,999	0	--
\$300,000- \$349,999	1	8	\$800,000- \$899,999	1	173
\$350,000- \$399,999	1	343	\$900,000- \$999,999	0	--
\$400,000- \$449,999	0	--	\$1,000,000 or over	0	--
\$450,000- \$499,999	0	--	Total:	24	87

	Sep 2010	Sep 2009	% Change	2010 YTD	2009 YTD	% Change
Sold Listings	24	28	- 14.3%	241	183	+ 31.7%
Volume	\$4,436,279	\$7,971,600	- 44.3%	\$68,230,612	\$41,644,507	+ 63.8%

Number of Sales

□ Previous Year ■ Most Recent Year



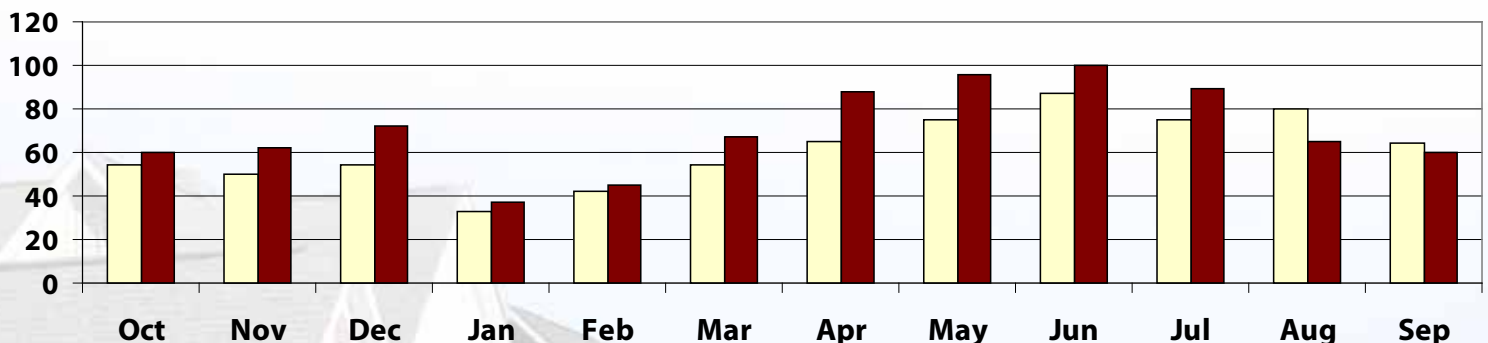
	Median			Average		
	Sep 2010	Sep 2009	% Change	Sep 2010	Sep 2009	% Change
List Price	\$372,450	\$352,450	+ 5.7%	\$470,315	\$404,755	+ 16.2%
Sold Price	\$372,500	\$332,500	+ 12.0%	\$439,755	\$382,960	+ 14.8%
Square Feet	2991	2562	+ 16.7%	3125	2724	+ 14.7%
LP/SF	\$134	\$132	+ 1.1%	\$143	\$142	+ 0.4%
SP/SF	\$129	\$127	+ 1.6%	\$134	\$135	- 0.3%
SP/LP	96.7%	95.7%	+ 1.0%	95.2%	94.9%	+ 0.3%
DOM	108	67	+ 62.4%	125	96	+ 30.2%

Price Range	Quantity	DOM	Price Range	Quantity	DOM
\$149,999 or under	5	53	\$500,000- \$549,999	5	241
\$150,000- \$199,999	3	75	\$550,000- \$599,999	2	40
\$200,000- \$249,999	5	65	\$600,000- \$699,999	5	138
\$250,000- \$299,999	9	141	\$700,000- \$799,999	3	158
\$300,000- \$349,999	6	164	\$800,000- \$899,999	1	251
\$350,000- \$399,999	5	55	\$900,000- \$999,999	0	--
\$400,000- \$449,999	6	108	\$1,000,000 or over	3	241
\$450,000- \$499,999	2	33	Total:	60	108

	Sep 2010	Sep 2009	% Change	2010 YTD	2009 YTD	% Change
Sold Listings	60	64	- 6.3%	647	575	+ 12.5%
Volume	\$26,385,327	\$24,509,465	+ 7.7%	\$266,771,820	\$236,187,035	+ 12.9%

Number of Sales

□ Previous Year ■ Most Recent Year



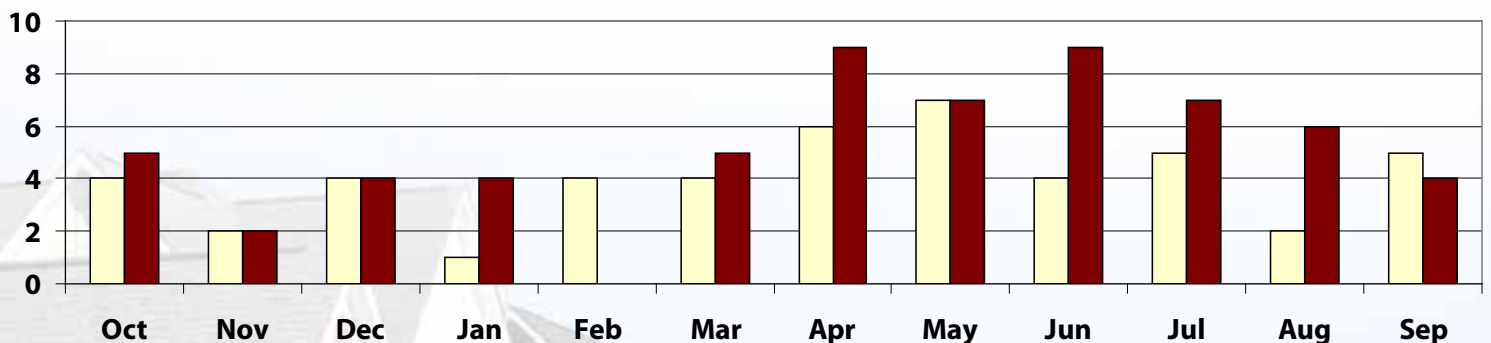
	Median			Average		
	Sep 2010	Sep 2009	% Change	Sep 2010	Sep 2009	% Change
List Price	\$825,000	\$225,000	+ 266.7%	\$815,908	\$283,480	+ 187.8%
Sold Price	\$662,500	\$225,000	+ 194.4%	\$683,500	\$266,000	+ 157.0%
Square Feet	3496	2100	+ 66.5%	3320	2482	+ 33.8%
LP/SF	\$184	\$113	+ 63.5%	\$255	\$115	+ 121.2%
SP/SF	\$146	\$107	+ 36.3%	\$216	\$109	+ 96.9%
SP/LP	83.4%	97.2%	- 14.2%	83.2%	95.0%	- 12.4%
DOM	225	84	+ 167.9%	236	122	+ 94.1%

Price Range	Quantity	DOM	Price Range	Quantity	DOM
\$149,999 or under	1	183	\$500,000- \$549,999	0	--
\$150,000- \$199,999	0	--	\$550,000- \$599,999	0	--
\$200,000- \$249,999	0	--	\$600,000- \$699,999	0	--
\$250,000- \$299,999	0	--	\$700,000- \$799,999	0	--
\$300,000- \$349,999	0	--	\$800,000- \$899,999	0	--
\$350,000- \$399,999	0	--	\$900,000- \$999,999	1	179
\$400,000- \$449,999	1	315	\$1,000,000 or over	1	267
\$450,000- \$499,999	0	--	Total:	4	225

	Sep 2010	Sep 2009	% Change	2010 YTD	2009 YTD	% Change
Sold Listings	4	5	- 20.0%	51	38	+ 34.2%
Volume	\$2,734,000	\$1,330,000	+ 105.6%	\$25,340,901	\$13,773,685	+ 84.0%

Number of Sales

□ Previous Year ■ Most Recent Year



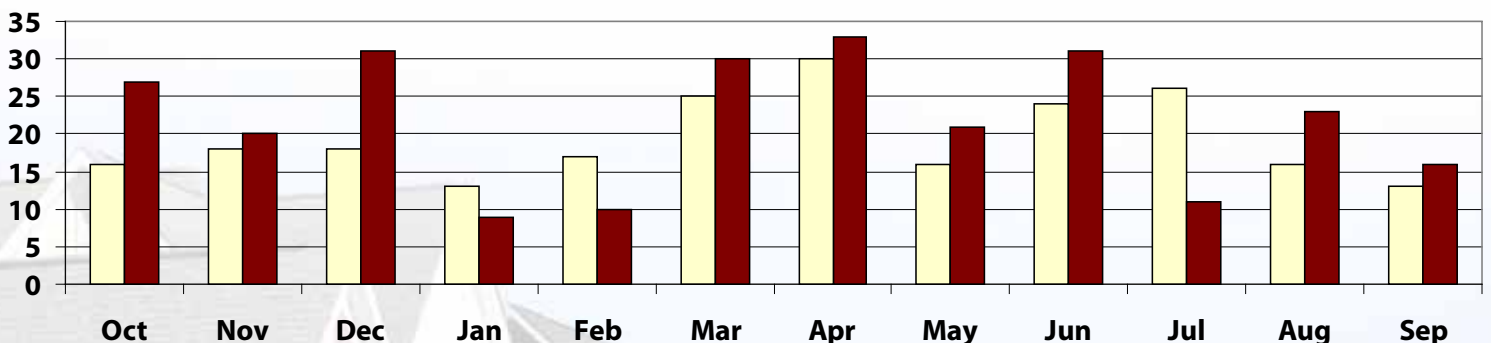
	Median			Average		
	Sep 2010	Sep 2009	% Change	Sep 2010	Sep 2009	% Change
List Price	\$126,012	\$93,000	+ 35.5%	\$136,819	\$93,815	+ 45.8%
Sold Price	\$119,325	\$93,000	+ 28.3%	\$129,625	\$93,776	+ 38.2%
Square Feet	1944	1593	+ 22.0%	1994	1665	+ 19.8%
LP/SF	\$68	\$58	+ 18.2%	\$66	\$57	+ 15.1%
SP/SF	\$64	\$57	+ 12.1%	\$63	\$57	+ 10.1%
SP/LP	96.2%	100.0%	- 3.8%	95.4%	100.0%	- 4.5%
DOM	63	19	+ 231.6%	75	26	+ 194.5%

Price Range	Quantity	DOM	Price Range	Quantity	DOM
\$149,999 or under	14	80	\$500,000- \$549,999	0	--
\$150,000- \$199,999	1	0	\$550,000- \$599,999	0	--
\$200,000- \$249,999	0	--	\$600,000- \$699,999	0	--
\$250,000- \$299,999	0	--	\$700,000- \$799,999	0	--
\$300,000- \$349,999	0	--	\$800,000- \$899,999	0	--
\$350,000- \$399,999	0	--	\$900,000- \$999,999	0	--
\$400,000- \$449,999	0	--	\$1,000,000 or over	0	--
\$450,000- \$499,999	1	83	Total:	16	63

	Sep 2010	Sep 2009	% Change	2010 YTD	2009 YTD	% Change
Sold Listings	16	13	+ 23.1%	184	180	+ 2.2%
Volume	\$2,074,000	\$1,219,091	+ 70.1%	\$21,405,660	\$20,804,282	+ 2.9%

Number of Sales

□ Previous Year ■ Most Recent Year



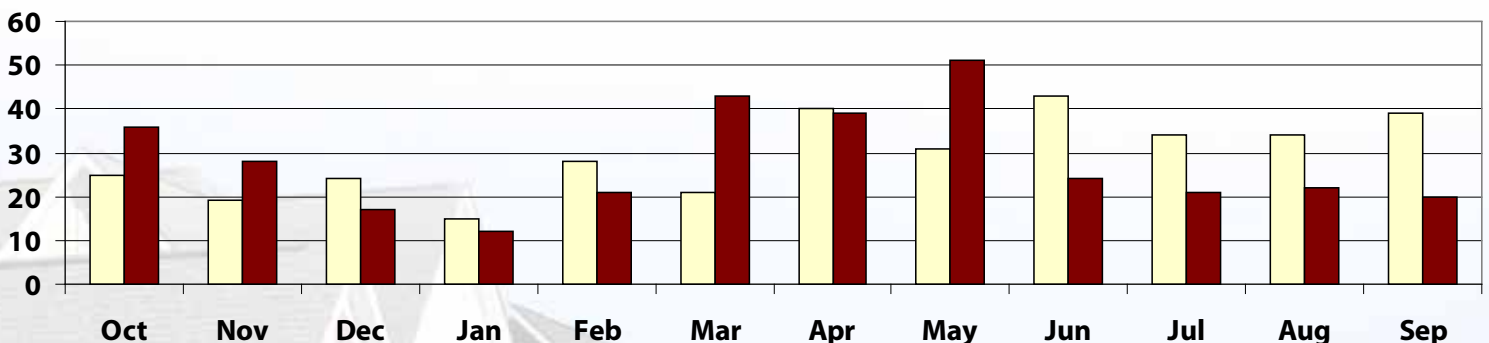
	Median			Average		
	Sep 2010	Sep 2009	% Change	Sep 2010	Sep 2009	% Change
List Price	\$217,450	\$179,900	+ 20.9%	\$230,368	\$182,734	+ 26.1%
Sold Price	\$209,500	\$180,000	+ 16.4%	\$224,520	\$179,851	+ 24.8%
Square Feet	1916	1723	+ 11.2%	1982	1820	+ 8.9%
LP/SF	\$112	\$101	+ 11.8%	\$114	\$102	+ 11.8%
SP/SF	\$110	\$100	+ 10.1%	\$111	\$101	+ 10.1%
SP/LP	98.2%	99.0%	- 0.8%	97.1%	98.6%	- 1.5%
DOM	57	16	+ 256.3%	67	36	+ 84.8%

Price Range	Quantity	DOM	Price Range	Quantity	DOM
\$149,999 or under	1	81	\$500,000- \$549,999	0	--
\$150,000- \$199,999	7	62	\$550,000- \$599,999	0	--
\$200,000- \$249,999	8	80	\$600,000- \$699,999	1	119
\$250,000- \$299,999	3	24	\$700,000- \$799,999	0	--
\$300,000- \$349,999	0	--	\$800,000- \$899,999	0	--
\$350,000- \$399,999	0	--	\$900,000- \$999,999	0	--
\$400,000- \$449,999	0	--	\$1,000,000 or over	0	--
\$450,000- \$499,999	0	--	Total:	20	57

	Sep 2010	Sep 2009	% Change	2010 YTD	2009 YTD	% Change
Sold Listings	20	39	- 48.7%	253	285	- 11.2%
Volume	\$4,490,400	\$7,014,190	- 36.0%	\$48,675,204	\$52,500,623	- 7.3%

Number of Sales

□ Previous Year ■ Most Recent Year



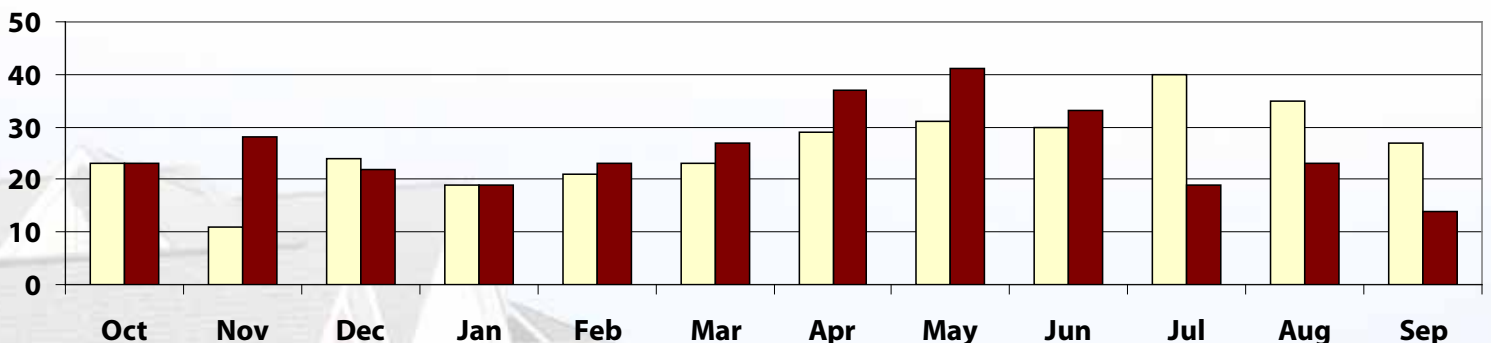
	Median			Average		
	Sep 2010	Sep 2009	% Change	Sep 2010	Sep 2009	% Change
List Price	\$152,400	\$144,900	+ 5.2%	\$154,031	\$145,435	+ 5.9%
Sold Price	\$147,825	\$140,000	+ 5.6%	\$147,421	\$141,804	+ 4.0%
Square Feet	1721	1695	+ 1.5%	1762	1712	+ 2.9%
LP/SF	\$95	\$87	+ 9.6%	\$92	\$87	+ 5.2%
SP/SF	\$90	\$85	+ 5.8%	\$88	\$85	+ 3.2%
SP/LP	97.3%	97.4%	- 0.2%	95.7%	97.7%	- 2.0%
DOM	41	33	+ 22.7%	49	52	- 4.4%

Price Range	Quantity	DOM	Price Range	Quantity	DOM
\$149,999 or under	8	42	\$500,000- \$549,999	0	--
\$150,000- \$199,999	5	57	\$550,000- \$599,999	0	--
\$200,000- \$249,999	1	67	\$600,000- \$699,999	0	--
\$250,000- \$299,999	0	--	\$700,000- \$799,999	0	--
\$300,000- \$349,999	0	--	\$800,000- \$899,999	0	--
\$350,000- \$399,999	0	--	\$900,000- \$999,999	0	--
\$400,000- \$449,999	0	--	\$1,000,000 or over	0	--
\$450,000- \$499,999	0	--	Total:	14	41

	Sep 2010	Sep 2009	% Change	2010 YTD	2009 YTD	% Change
Sold Listings	14	27	- 48.1%	236	255	- 7.5%
Volume	\$2,063,900	\$3,828,720	- 46.1%	\$35,330,741	\$37,303,648	- 5.3%

Number of Sales

□ Previous Year ■ Most Recent Year



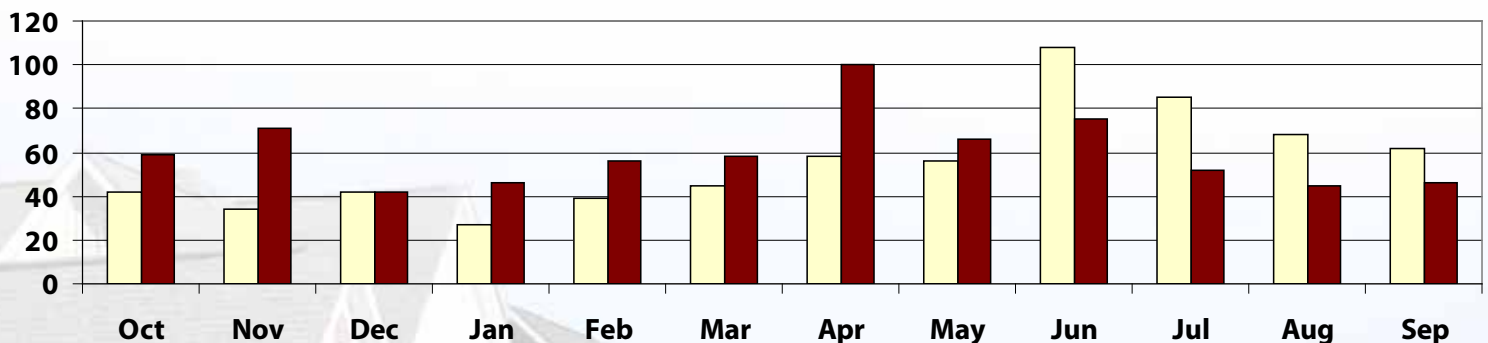
	Median			Average		
	Sep 2010	Sep 2009	% Change	Sep 2010	Sep 2009	% Change
List Price	\$208,751	\$205,000	+ 1.8%	\$230,837	\$225,345	+ 2.4%
Sold Price	\$202,375	\$202,000	+ 0.2%	\$223,957	\$220,488	+ 1.6%
Square Feet	2043	1901	+ 7.5%	2125	2006	+ 6.0%
LP/SF	\$106	\$106	- 0.2%	\$105	\$110	- 4.1%
SP/SF	\$103	\$104	- 0.8%	\$102	\$107	- 4.6%
SP/LP	97.4%	97.7%	- 0.3%	97.4%	97.8%	- 0.4%
DOM	51	26	+ 98.0%	74	55	+ 35.3%

Price Range	Quantity	DOM	Price Range	Quantity	DOM
\$149,999 or under	7	25	\$500,000- \$549,999	0	--
\$150,000- \$199,999	15	106	\$550,000- \$599,999	0	--
\$200,000- \$249,999	9	86	\$600,000- \$699,999	0	--
\$250,000- \$299,999	3	59	\$700,000- \$799,999	0	--
\$300,000- \$349,999	5	40	\$800,000- \$899,999	0	--
\$350,000- \$399,999	4	101	\$900,000- \$999,999	0	--
\$400,000- \$449,999	2	43	\$1,000,000 or over	0	--
\$450,000- \$499,999	1	7	Total:	46	51

	Sep 2010	Sep 2009	% Change	2010 YTD	2009 YTD	% Change
Sold Listings	46	62	- 25.8%	544	548	- 0.7%
Volume	\$10,302,041	\$13,670,251	- 24.6%	\$120,065,812	\$125,498,449	- 4.3%

Number of Sales

□ Previous Year ■ Most Recent Year



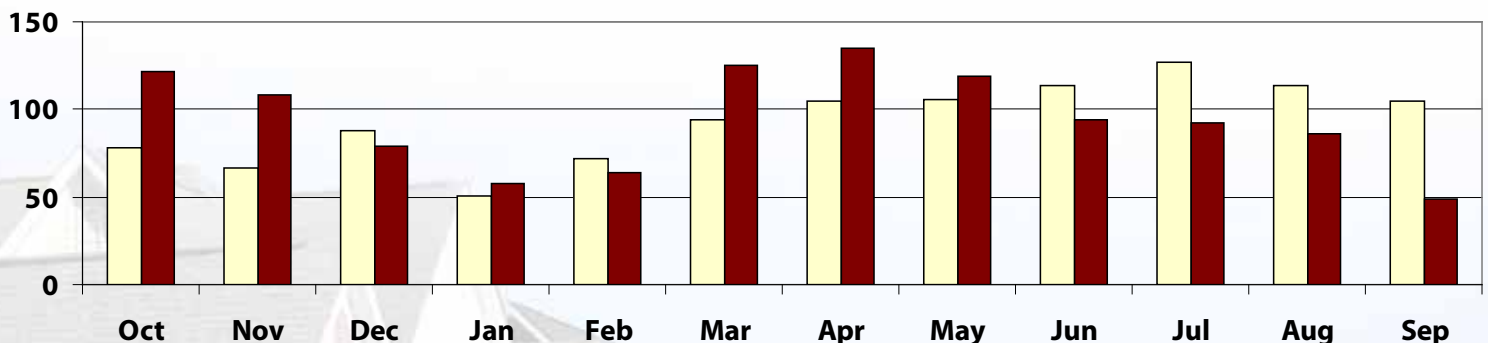
	Median			Average		
	Sep 2010	Sep 2009	% Change	Sep 2010	Sep 2009	% Change
List Price	\$159,000	\$151,020	+ 5.3%	\$163,242	\$161,680	+ 1.0%
Sold Price	\$157,000	\$155,000	+ 1.3%	\$158,055	\$158,711	- 0.4%
Square Feet	2041	1859	+ 9.8%	2200	2005	+ 9.7%
LP/SF	\$78	\$83	- 6.9%	\$77	\$84	- 8.1%
SP/SF	\$77	\$82	- 5.9%	\$74	\$82	- 9.7%
SP/LP	98.5%	98.9%	- 0.4%	96.7%	98.4%	- 1.7%
DOM	69	34	+ 102.9%	85	56	+ 52.6%

Price Range	Quantity	DOM	Price Range	Quantity	DOM
\$149,999 or under	22	60	\$500,000- \$549,999	0	--
\$150,000- \$199,999	21	98	\$550,000- \$599,999	0	--
\$200,000- \$249,999	3	116	\$600,000- \$699,999	0	--
\$250,000- \$299,999	3	139	\$700,000- \$799,999	0	--
\$300,000- \$349,999	0	--	\$800,000- \$899,999	0	--
\$350,000- \$399,999	0	--	\$900,000- \$999,999	0	--
\$400,000- \$449,999	0	--	\$1,000,000 or over	0	--
\$450,000- \$499,999	0	--	Total:	49	69

	Sep 2010	Sep 2009	% Change	2010 YTD	2009 YTD	% Change
Sold Listings	49	105	- 53.3%	822	888	- 7.4%
Volume	\$7,744,704	\$16,664,651	- 53.5%	\$132,562,953	\$145,295,338	- 8.8%

Number of Sales

Previous Year Most Recent Year



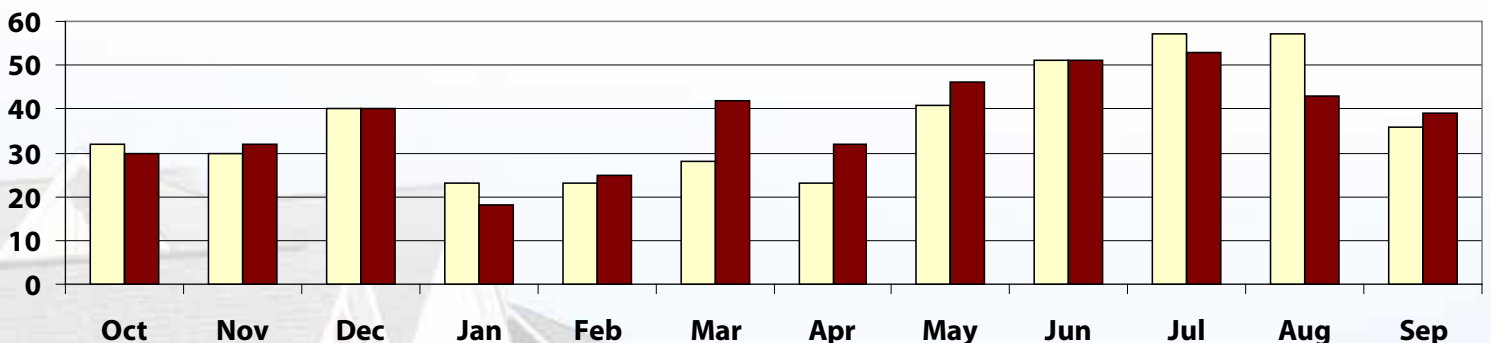
	Median			Average		
	Sep 2010	Sep 2009	% Change	Sep 2010	Sep 2009	% Change
List Price	\$436,000	\$374,500	+ 16.4%	\$485,044	\$504,343	- 3.8%
Sold Price	\$422,000	\$369,500	+ 14.2%	\$461,883	\$475,718	- 2.9%
Square Feet	3112	3174	- 2.0%	3102	3414	- 9.1%
LP/SF	\$138	\$126	+ 9.7%	\$159	\$142	+ 12.4%
SP/SF	\$132	\$121	+ 8.8%	\$150	\$135	+ 11.5%
SP/LP	97.3%	97.8%	- 0.5%	95.2%	96.1%	- 0.9%
DOM	48	75	- 35.6%	71	102	- 30.7%

Price Range	Quantity	DOM	Price Range	Quantity	DOM
\$149,999 or under	3	26	\$500,000- \$549,999	3	73
\$150,000- \$199,999	0	--	\$550,000- \$599,999	2	127
\$200,000- \$249,999	5	72	\$600,000- \$699,999	4	40
\$250,000- \$299,999	4	80	\$700,000- \$799,999	2	29
\$300,000- \$349,999	3	34	\$800,000- \$899,999	2	353
\$350,000- \$399,999	2	25	\$900,000- \$999,999	2	51
\$400,000- \$449,999	5	57	\$1,000,000 or over	0	--
\$450,000- \$499,999	2	33	Total:	39	48

	Sep 2010	Sep 2009	% Change	2010 YTD	2009 YTD	% Change
Sold Listings	39	36	+ 8.3%	349	339	+ 2.9%
Volume	\$18,013,428	\$17,125,852	+ 5.2%	\$164,878,222	\$154,989,757	+ 6.4%

Number of Sales

□ Previous Year ■ Most Recent Year



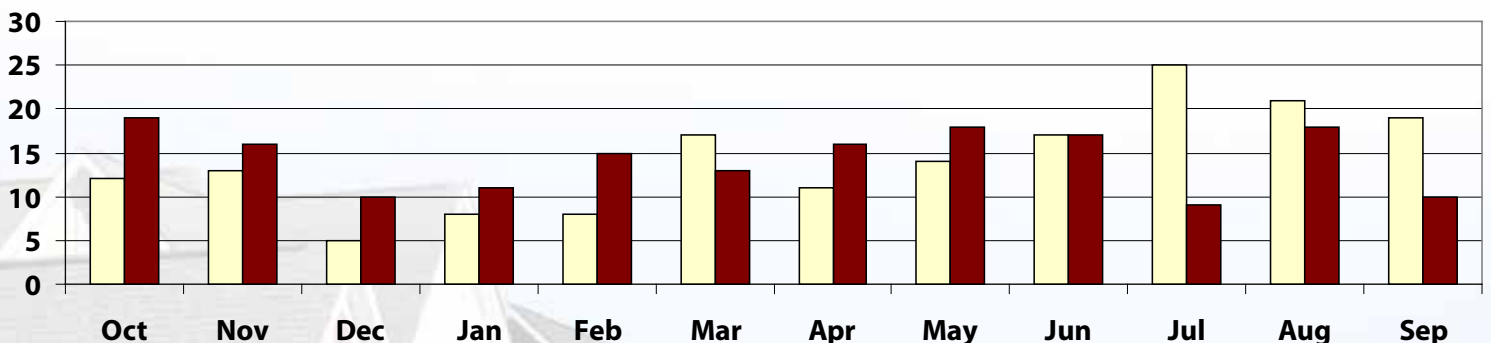
	Median			Average		
	Sep 2010	Sep 2009	% Change	Sep 2010	Sep 2009	% Change
List Price	\$200,325	\$174,900	+ 14.5%	\$218,122	\$184,166	+ 18.4%
Sold Price	\$201,139	\$172,000	+ 16.9%	\$206,924	\$175,594	+ 17.8%
Square Feet	2074	2052	+ 1.0%	2148	2015	+ 6.6%
LP/SF	\$101	\$100	+ 1.1%	\$102	\$92	+ 11.1%
SP/SF	\$99	\$98	+ 0.9%	\$97	\$88	+ 10.8%
SP/LP	99.5%	95.5%	+ 4.1%	97.2%	95.1%	+ 2.2%
DOM	62	102	- 39.7%	106	113	- 6.1%

Price Range	Quantity	DOM	Price Range	Quantity	DOM
\$149,999 or under	3	52	\$500,000- \$549,999	0	--
\$150,000- \$199,999	2	47	\$550,000- \$599,999	0	--
\$200,000- \$249,999	3	134	\$600,000- \$699,999	0	--
\$250,000- \$299,999	0	--	\$700,000- \$799,999	0	--
\$300,000- \$349,999	2	203	\$800,000- \$899,999	0	--
\$350,000- \$399,999	0	--	\$900,000- \$999,999	0	--
\$400,000- \$449,999	0	--	\$1,000,000 or over	0	--
\$450,000- \$499,999	0	--	Total:	10	62

	Sep 2010	Sep 2009	% Change	2010 YTD	2009 YTD	% Change
Sold Listings	10	19	- 47.4%	127	140	- 9.3%
Volume	\$2,069,241	\$3,336,291	- 38.0%	\$21,812,386	\$23,924,563	- 8.8%

Number of Sales

□ Previous Year ■ Most Recent Year



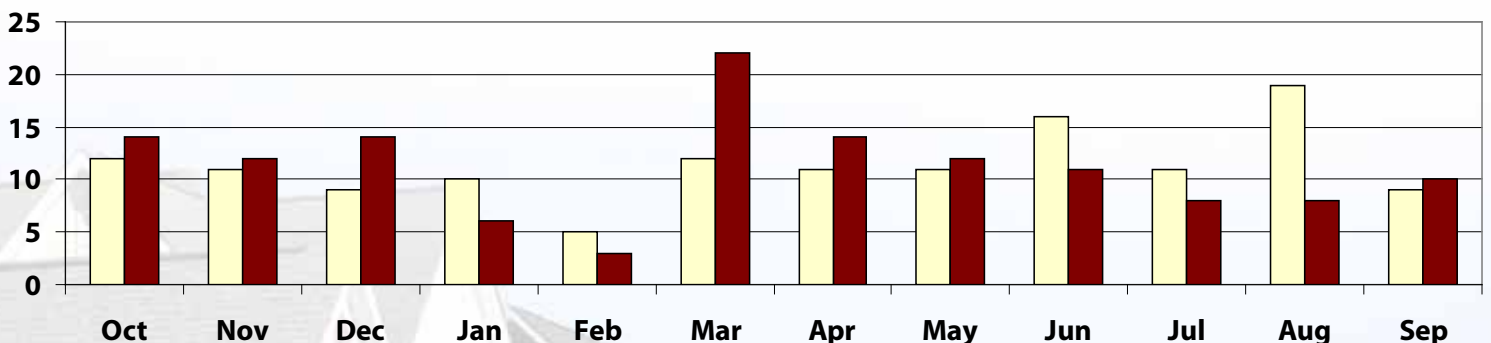
	Median			Average		
	Sep 2010	Sep 2009	% Change	Sep 2010	Sep 2009	% Change
List Price	\$74,900	\$107,900	- 30.6%	\$80,116	\$106,917	- 25.1%
Sold Price	\$72,800	\$107,900	- 32.5%	\$77,189	\$106,953	- 27.8%
Square Feet	1721	1563	+ 10.1%	1923	1669	+ 15.2%
LP/SF	\$40	\$67	- 40.8%	\$43	\$67	- 36.2%
SP/SF	\$36	\$65	- 45.7%	\$42	\$67	- 38.1%
SP/LP	98.6%	100.0%	- 1.4%	97.6%	99.8%	- 2.2%
DOM	23	25	- 8.0%	43	61	- 30.0%

Price Range	Quantity	DOM	Price Range	Quantity	DOM
\$149,999 or under	10	43	\$500,000- \$549,999	0	--
\$150,000- \$199,999	0	--	\$550,000- \$599,999	0	--
\$200,000- \$249,999	0	--	\$600,000- \$699,999	0	--
\$250,000- \$299,999	0	--	\$700,000- \$799,999	0	--
\$300,000- \$349,999	0	--	\$800,000- \$899,999	0	--
\$350,000- \$399,999	0	--	\$900,000- \$999,999	0	--
\$400,000- \$449,999	0	--	\$1,000,000 or over	0	--
\$450,000- \$499,999	0	--	Total:	10	23

	Sep 2010	Sep 2009	% Change	2010 YTD	2009 YTD	% Change
Sold Listings	10	9	+ 11.1%	94	104	- 9.6%
Volume	\$771,894	\$962,575	- 19.8%	\$9,808,563	\$11,442,078	- 14.3%

Number of Sales

□ Previous Year ■ Most Recent Year



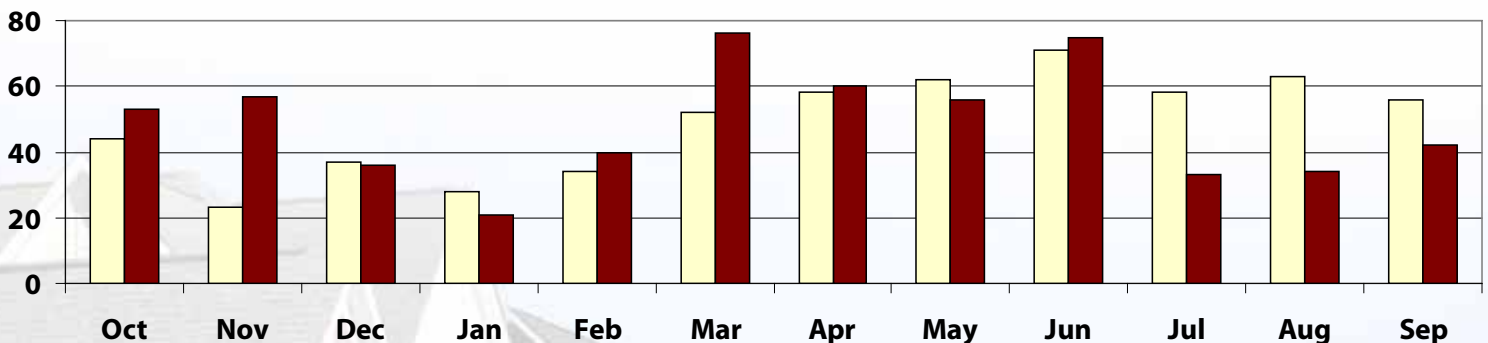
	Median			Average		
	Sep 2010	Sep 2009	% Change	Sep 2010	Sep 2009	% Change
List Price	\$232,200	\$227,450	+ 2.1%	\$253,861	\$243,991	+ 4.0%
Sold Price	\$222,000	\$216,750	+ 2.4%	\$244,918	\$236,247	+ 3.7%
Square Feet	2240	2077	+ 7.8%	2295	2299	- 0.2%
LP/SF	\$110	\$110	- 0.5%	\$112	\$108	+ 3.5%
SP/SF	\$104	\$107	- 2.5%	\$108	\$105	+ 2.4%
SP/LP	97.3%	98.1%	- 0.9%	96.6%	97.5%	- 0.9%
DOM	57	33	+ 72.7%	73	76	- 3.3%

Price Range	Quantity	DOM	Price Range	Quantity	DOM
\$149,999 or under	1	68	\$500,000- \$549,999	1	161
\$150,000- \$199,999	15	67	\$550,000- \$599,999	0	--
\$200,000- \$249,999	10	91	\$600,000- \$699,999	0	--
\$250,000- \$299,999	9	53	\$700,000- \$799,999	0	--
\$300,000- \$349,999	0	--	\$800,000- \$899,999	0	--
\$350,000- \$399,999	3	83	\$900,000- \$999,999	0	--
\$400,000- \$449,999	2	69	\$1,000,000 or over	0	--
\$450,000- \$499,999	1	59	Total:	42	57

	Sep 2010	Sep 2009	% Change	2010 YTD	2009 YTD	% Change
Sold Listings	42	56	- 25.0%	437	482	- 9.3%
Volume	\$10,286,553	\$13,229,811	- 22.2%	\$104,693,223	\$109,789,155	- 4.6%

Number of Sales

□ Previous Year ■ Most Recent Year



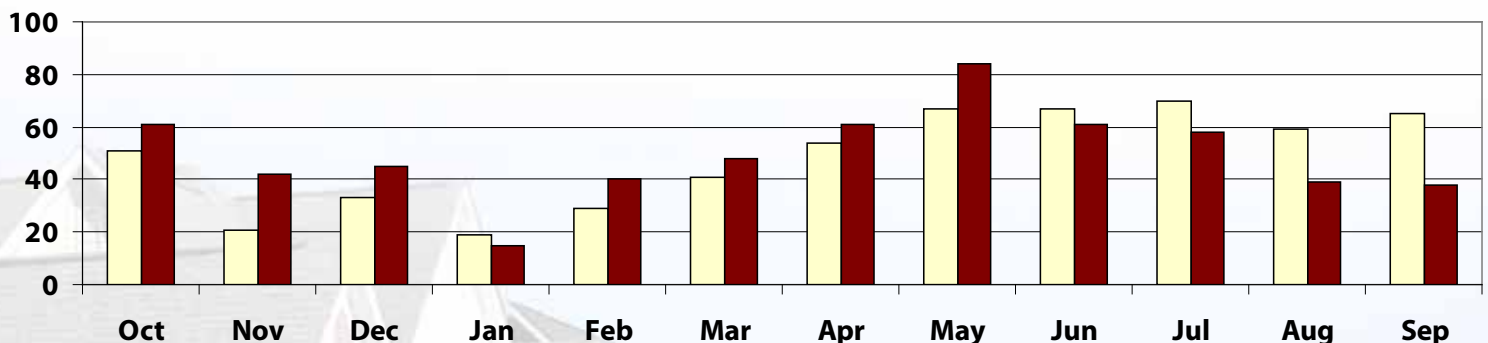
	Median			Average		
	Sep 2010	Sep 2009	% Change	Sep 2010	Sep 2009	% Change
List Price	\$274,450	\$269,900	+ 1.7%	\$286,360	\$297,167	- 3.6%
Sold Price	\$270,250	\$267,000	+ 1.2%	\$281,621	\$289,258	- 2.6%
Square Feet	2327	2321	+ 0.2%	2426	2468	- 1.7%
LP/SF	\$120	\$120	- 0.7%	\$120	\$122	- 1.1%
SP/SF	\$115	\$116	- 0.6%	\$119	\$119	- 0.3%
SP/LP	98.0%	98.4%	- 0.4%	98.4%	97.7%	+ 0.7%
DOM	45	39	+ 15.4%	66	57	+ 15.1%

Price Range	Quantity	DOM	Price Range	Quantity	DOM
\$149,999 or under	1	22	\$500,000- \$549,999	0	--
\$150,000- \$199,999	6	108	\$550,000- \$599,999	0	--
\$200,000- \$249,999	9	53	\$600,000- \$699,999	0	--
\$250,000- \$299,999	7	61	\$700,000- \$799,999	0	--
\$300,000- \$349,999	4	46	\$800,000- \$899,999	0	--
\$350,000- \$399,999	9	76	\$900,000- \$999,999	0	--
\$400,000- \$449,999	1	27	\$1,000,000 or over	0	--
\$450,000- \$499,999	1	25	Total:	38	45

	Sep 2010	Sep 2009	% Change	2010 YTD	2009 YTD	% Change
Sold Listings	38	65	- 41.5%	444	471	- 5.7%
Volume	\$10,701,609	\$18,801,802	- 43.1%	\$127,960,402	\$134,268,476	- 4.7%

Number of Sales

Previous Year Most Recent Year



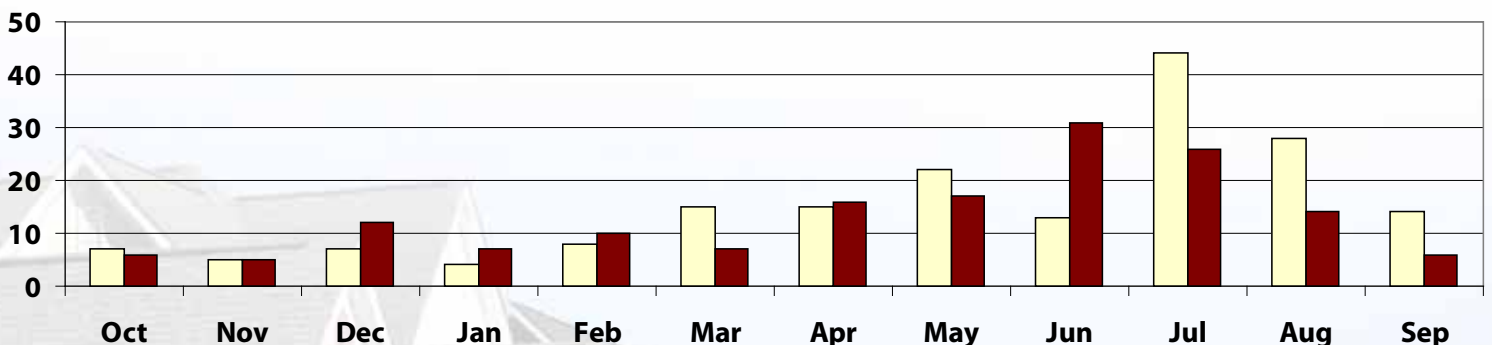
	Median			Average		
	Sep 2010	Sep 2009	% Change	Sep 2010	Sep 2009	% Change
List Price	\$240,950	\$137,400	+ 75.4%	\$249,117	\$180,186	+ 38.3%
Sold Price	\$230,500	\$132,750	+ 73.6%	\$236,500	\$174,807	+ 35.3%
Square Feet	988	720	+ 37.2%	1081	840	+ 28.7%
LP/SF	\$240	\$213	+ 12.5%	\$231	\$218	+ 5.9%
SP/SF	\$230	\$209	+ 9.8%	\$220	\$213	+ 3.4%
SP/LP	95.5%	97.7%	- 2.3%	95.1%	97.3%	- 2.2%
DOM	183	70	+ 163.3%	168	96	+ 75.0%

Price Range	Quantity	DOM	Price Range	Quantity	DOM
\$149,999 or under	0	--	\$500,000- \$549,999	0	--
\$150,000- \$199,999	2	151	\$550,000- \$599,999	0	--
\$200,000- \$249,999	3	195	\$600,000- \$699,999	0	--
\$250,000- \$299,999	0	--	\$700,000- \$799,999	0	--
\$300,000- \$349,999	1	118	\$800,000- \$899,999	0	--
\$350,000- \$399,999	0	--	\$900,000- \$999,999	0	--
\$400,000- \$449,999	0	--	\$1,000,000 or over	0	--
\$450,000- \$499,999	0	--	Total:	6	183

	Sep 2010	Sep 2009	% Change	2010 YTD	2009 YTD	% Change
Sold Listings	6	14	- 57.1%	134	163	- 17.8%
Volume	\$1,419,000	\$2,447,300	- 42.0%	\$29,512,283	\$36,045,754	- 18.1%

Number of Sales

Previous Year
 Most Recent Year



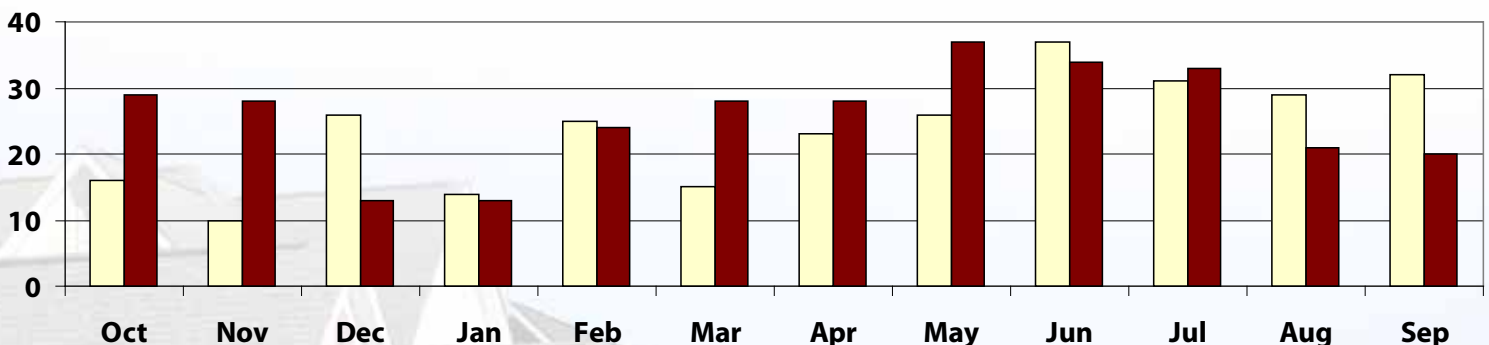
	Median			Average		
	Sep 2010	Sep 2009	% Change	Sep 2010	Sep 2009	% Change
List Price	\$357,495	\$289,450	+ 23.5%	\$379,379	\$450,572	- 15.8%
Sold Price	\$342,500	\$298,450	+ 14.8%	\$353,937	\$424,298	- 16.6%
Square Feet	2495	1977	+ 26.2%	2859	2744	+ 4.2%
LP/SF	\$123	\$136	- 9.4%	\$130	\$143	- 9.2%
SP/SF	\$121	\$132	- 8.3%	\$123	\$139	- 11.1%
SP/LP	97.6%	97.9%	- 0.3%	95.5%	98.4%	- 2.9%
DOM	69	59	+ 16.1%	104	67	+ 55.5%

Price Range	Quantity	DOM	Price Range	Quantity	DOM
\$149,999 or under	0	--	\$500,000- \$549,999	0	--
\$150,000- \$199,999	3	48	\$550,000- \$599,999	0	--
\$200,000- \$249,999	2	212	\$600,000- \$699,999	0	--
\$250,000- \$299,999	2	273	\$700,000- \$799,999	0	--
\$300,000- \$349,999	3	107	\$800,000- \$899,999	0	--
\$350,000- \$399,999	7	60	\$900,000- \$999,999	0	--
\$400,000- \$449,999	2	47	\$1,000,000 or over	1	137
\$450,000- \$499,999	0	--	Total:	20	69

	Sep 2010	Sep 2009	% Change	2010 YTD	2009 YTD	% Change
Sold Listings	20	32	- 37.5%	238	232	+ 2.6%
Volume	\$7,078,745	\$13,577,550	- 47.9%	\$93,073,182	\$105,290,955	- 11.6%

Number of Sales

■ Previous Year
 ■ Most Recent Year



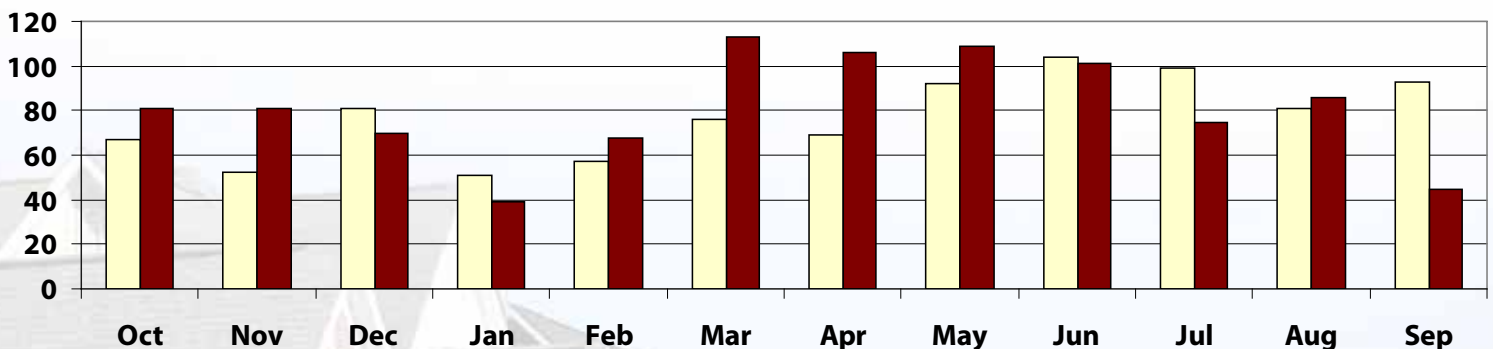
	Median			Average		
	Sep 2010	Sep 2009	% Change	Sep 2010	Sep 2009	% Change
List Price	\$149,900	\$156,000	- 3.9%	\$185,815	\$182,148	+ 2.0%
Sold Price	\$145,000	\$155,000	- 6.5%	\$179,100	\$177,246	+ 1.0%
Square Feet	2153	1866	+ 15.4%	2231	2052	+ 8.7%
LP/SF	\$79	\$90	- 12.7%	\$83	\$89	- 7.6%
SP/SF	\$77	\$89	- 12.7%	\$79	\$87	- 9.2%
SP/LP	96.7%	98.4%	- 1.7%	96.2%	97.9%	- 1.7%
DOM	68	35	+ 94.3%	77	53	+ 43.9%

Price Range	Quantity	DOM	Price Range	Quantity	DOM
\$149,999 or under	25	77	\$500,000- \$549,999	0	--
\$150,000- \$199,999	9	48	\$550,000- \$599,999	0	--
\$200,000- \$249,999	2	21	\$600,000- \$699,999	0	--
\$250,000- \$299,999	4	84	\$700,000- \$799,999	0	--
\$300,000- \$349,999	1	189	\$800,000- \$899,999	0	--
\$350,000- \$399,999	2	164	\$900,000- \$999,999	0	--
\$400,000- \$449,999	1	74	\$1,000,000 or over	0	--
\$450,000- \$499,999	1	130	Total:	45	68

	Sep 2010	Sep 2009	% Change	2010 YTD	2009 YTD	% Change
Sold Listings	45	93	- 51.6%	742	722	+ 2.8%
Volume	\$8,059,481	\$16,483,835	- 51.1%	\$128,932,941	\$131,940,279	- 2.3%

Number of Sales

□ Previous Year ■ Most Recent Year



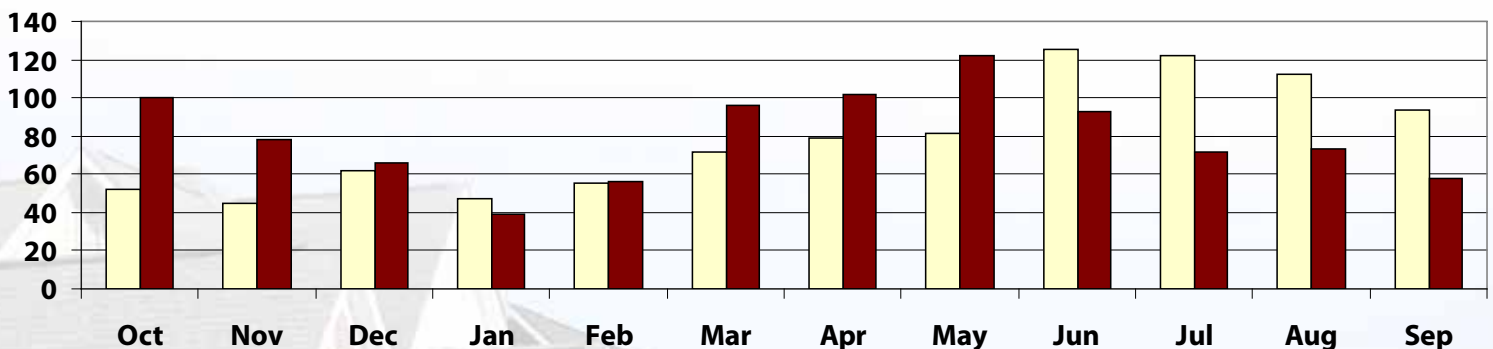
	Median			Average		
	Sep 2010	Sep 2009	% Change	Sep 2010	Sep 2009	% Change
List Price	\$219,215	\$202,500	+ 8.3%	\$251,821	\$233,373	+ 7.9%
Sold Price	\$212,000	\$199,750	+ 6.1%	\$242,656	\$223,987	+ 8.3%
Square Feet	2295	2152	+ 6.6%	2551	2318	+ 10.1%
LP/SF	\$97	\$96	+ 1.3%	\$99	\$100	- 0.7%
SP/SF	\$94	\$94	- 1.0%	\$96	\$96	- 0.7%
SP/LP	97.3%	98.0%	- 0.8%	96.9%	97.0%	- 0.1%
DOM	58	54	+ 7.5%	69	62	+ 11.7%

Price Range	Quantity	DOM	Price Range	Quantity	DOM
\$149,999 or under	9	71	\$500,000- \$549,999	0	--
\$150,000- \$199,999	13	81	\$550,000- \$599,999	0	--
\$200,000- \$249,999	17	54	\$600,000- \$699,999	1	111
\$250,000- \$299,999	5	38	\$700,000- \$799,999	0	--
\$300,000- \$349,999	4	128	\$800,000- \$899,999	0	--
\$350,000- \$399,999	6	71	\$900,000- \$999,999	0	--
\$400,000- \$449,999	1	49	\$1,000,000 or over	0	--
\$450,000- \$499,999	2	59	Total:	58	58

	Sep 2010	Sep 2009	% Change	2010 YTD	2009 YTD	% Change
Sold Listings	58	94	- 38.3%	711	787	- 9.7%
Volume	\$14,074,025	\$21,054,769	- 33.2%	\$164,985,657	\$185,047,526	- 10.8%

Number of Sales

□ Previous Year ■ Most Recent Year



Williamson County

September 2010

Residential MLS Area Statistics

Area

GTE

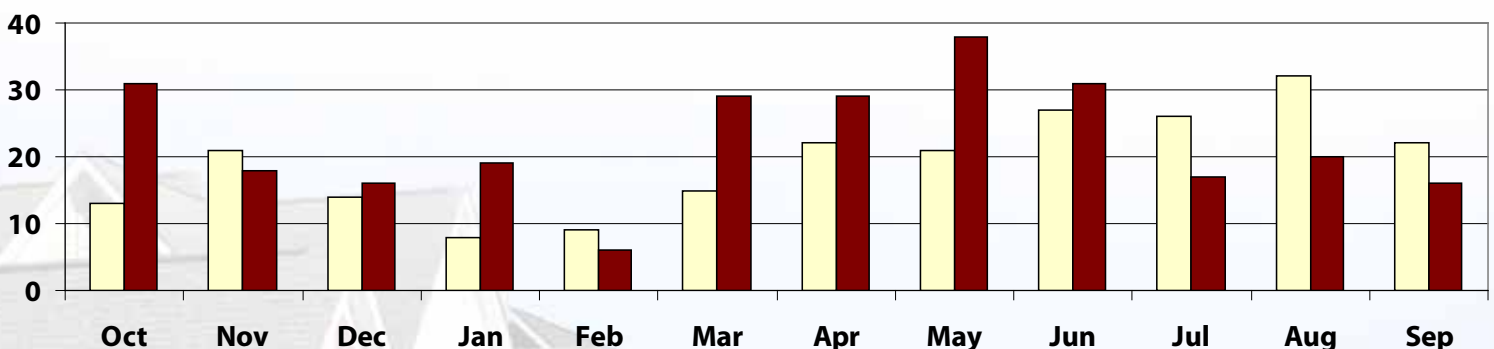
	Median			Average		
	Sep 2010	Sep 2009	% Change	Sep 2010	Sep 2009	% Change
List Price	\$159,475	\$137,445	+ 16.0%	\$174,415	\$169,851	+ 2.7%
Sold Price	\$153,101	\$132,250	+ 15.8%	\$169,713	\$162,020	+ 4.7%
Square Feet	1726	1542	+ 11.9%	1892	1728	+ 9.5%
LP/SF	\$94	\$93	+ 0.7%	\$97	\$97	+ 0.5%
SP/SF	\$91	\$92	- 0.5%	\$94	\$93	+ 1.4%
SP/LP	98.6%	98.6%	0.0%	97.6%	96.9%	+ 0.7%
DOM	34	32	+ 7.9%	41	54	- 23.4%

Price Range	Quantity	DOM	Price Range	Quantity	DOM
\$149,999 or under	8	44	\$500,000- \$549,999	0	--
\$150,000- \$199,999	5	33	\$550,000- \$599,999	0	--
\$200,000- \$249,999	0	--	\$600,000- \$699,999	0	--
\$250,000- \$299,999	1	46	\$700,000- \$799,999	0	--
\$300,000- \$349,999	2	49	\$800,000- \$899,999	0	--
\$350,000- \$399,999	0	--	\$900,000- \$999,999	0	--
\$400,000- \$449,999	0	--	\$1,000,000 or over	0	--
\$450,000- \$499,999	0	--	Total:	16	34

	Sep 2010	Sep 2009	% Change	2010 YTD	2009 YTD	% Change
Sold Listings	16	22	- 27.3%	205	182	+ 12.6%
Volume	\$2,715,402	\$3,564,450	- 23.8%	\$31,214,389	\$28,541,365	+ 9.4%

Number of Sales

□ Previous Year ■ Most Recent Year



Gracy Title
— a Stewart company

Based on information from the Austin Board of REALTORS® (alternatively, from ACTRIS) for the month indicated on the header. Neither the Board nor ACTRIS guarantees or is in any way responsible for its accuracy. All data is provided 'AS IS' and with all faults. Data maintained by the Board or ACTRIS may not reflect all real estate activity in the market. Copyright 2008 Austin Central Texas Realty Information Services, Inc.

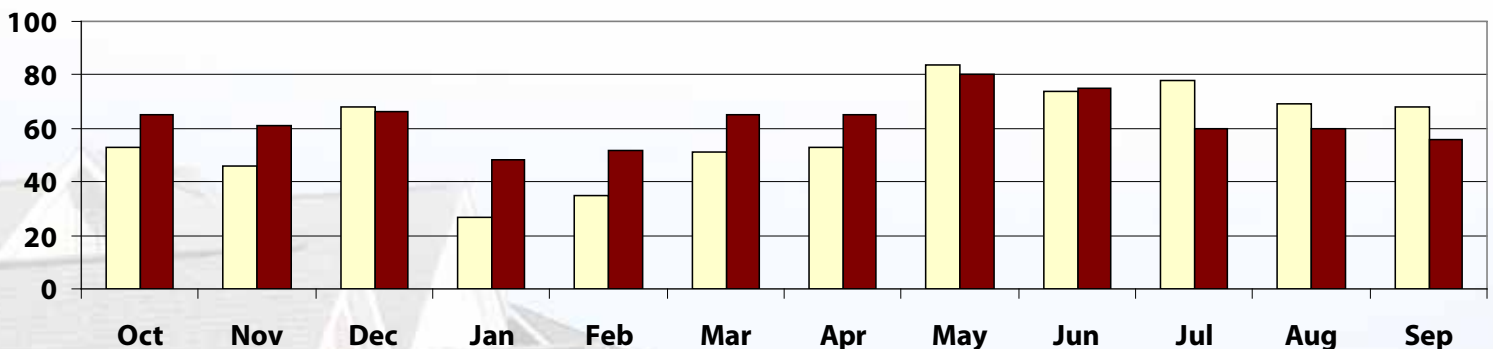
	Median			Average		
	Sep 2010	Sep 2009	% Change	Sep 2010	Sep 2009	% Change
List Price	\$208,750	\$202,751	+ 3.0%	\$271,551	\$224,406	+ 21.0%
Sold Price	\$198,495	\$196,588	+ 1.0%	\$257,533	\$215,652	+ 19.4%
Square Feet	1950	2008	- 2.9%	2234	2165	+ 3.2%
LP/SF	\$107	\$103	+ 4.6%	\$111	\$104	+ 6.8%
SP/SF	\$104	\$100	+ 5.0%	\$107	\$101	+ 6.1%
SP/LP	97.0%	96.8%	+ 0.2%	96.0%	96.4%	- 0.5%
DOM	38	60	- 36.7%	67	100	- 33.2%

Price Range	Quantity	DOM	Price Range	Quantity	DOM
\$149,999 or under	10	71	\$500,000- \$549,999	0	--
\$150,000- \$199,999	19	42	\$550,000- \$599,999	0	--
\$200,000- \$249,999	10	83	\$600,000- \$699,999	1	38
\$250,000- \$299,999	6	54	\$700,000- \$799,999	0	--
\$300,000- \$349,999	4	48	\$800,000- \$899,999	0	--
\$350,000- \$399,999	2	263	\$900,000- \$999,999	0	--
\$400,000- \$449,999	2	46	\$1,000,000 or over	1	27
\$450,000- \$499,999	1	210	Total:	56	38

	Sep 2010	Sep 2009	% Change	2010 YTD	2009 YTD	% Change
Sold Listings	56	68	- 17.6%	561	539	+ 4.1%
Volume	\$14,421,862	\$14,664,315	- 1.7%	\$134,189,420	\$134,410,541	- 0.2%

Number of Sales

□ Previous Year ■ Most Recent Year



Williamson County

September 2010

Residential MLS Area Statistics

Area

HU

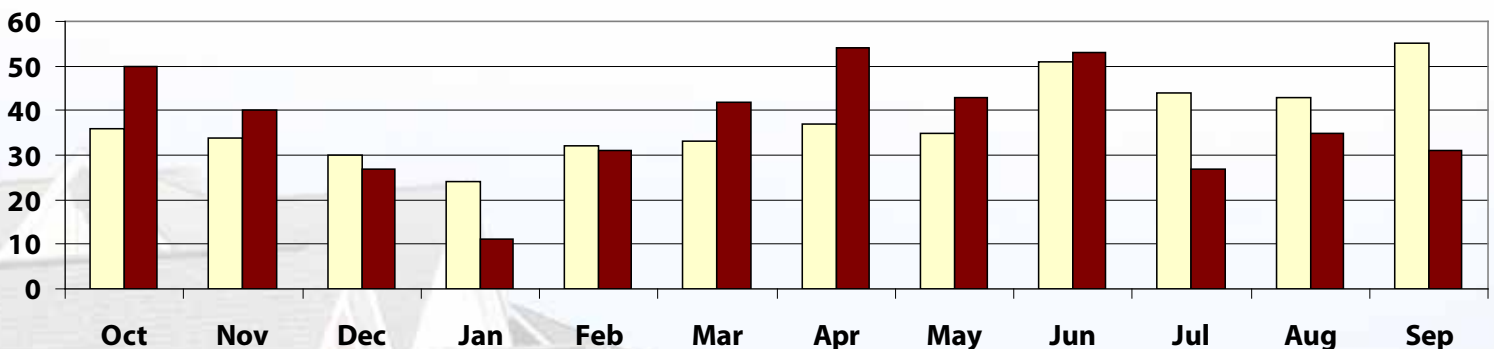
	Median			Average		
	Sep 2010	Sep 2009	% Change	Sep 2010	Sep 2009	% Change
List Price	\$124,840	\$132,900	- 6.1%	\$136,762	\$140,460	- 2.6%
Sold Price	\$122,000	\$132,500	- 7.9%	\$133,297	\$138,607	- 3.8%
Square Feet	1769	1695	+ 4.4%	1985	1897	+ 4.6%
LP/SF	\$68	\$80	- 15.0%	\$71	\$76	- 6.8%
SP/SF	\$68	\$76	- 11.4%	\$68	\$75	- 8.5%
SP/LP	97.7%	99.8%	- 2.1%	97.3%	98.9%	- 1.6%
DOM	65	47	+ 38.3%	79	63	+ 25.4%

Price Range	Quantity	DOM	Price Range	Quantity	DOM
\$149,999 or under	24	66	\$500,000- \$549,999	0	--
\$150,000- \$199,999	4	141	\$550,000- \$599,999	0	--
\$200,000- \$249,999	2	146	\$600,000- \$699,999	0	--
\$250,000- \$299,999	1	15	\$700,000- \$799,999	0	--
\$300,000- \$349,999	0	--	\$800,000- \$899,999	0	--
\$350,000- \$399,999	0	--	\$900,000- \$999,999	0	--
\$400,000- \$449,999	0	--	\$1,000,000 or over	0	--
\$450,000- \$499,999	0	--	Total:	31	65

	Sep 2010	Sep 2009	% Change	2010 YTD	2009 YTD	% Change
Sold Listings	31	55	- 43.6%	327	354	- 7.6%
Volume	\$4,132,204	\$7,623,388	- 45.8%	\$45,334,084	\$52,271,403	- 13.3%

Number of Sales

□ Previous Year ■ Most Recent Year



Gracy Title
—a stewart company

Based on information from the Austin Board of REALTORS® (alternatively, from ACTRIS) for the month indicated on the header. Neither the Board nor ACTRIS guarantees or is in any way responsible for its accuracy. All data is provided 'AS IS' and with all faults. Data maintained by the Board or ACTRIS may not reflect all real estate activity in the market. Copyright 2008 Austin Central Texas Realty Information Services, Inc.

Williamson County

September 2010

Residential MLS Area Statistics

Area

JA

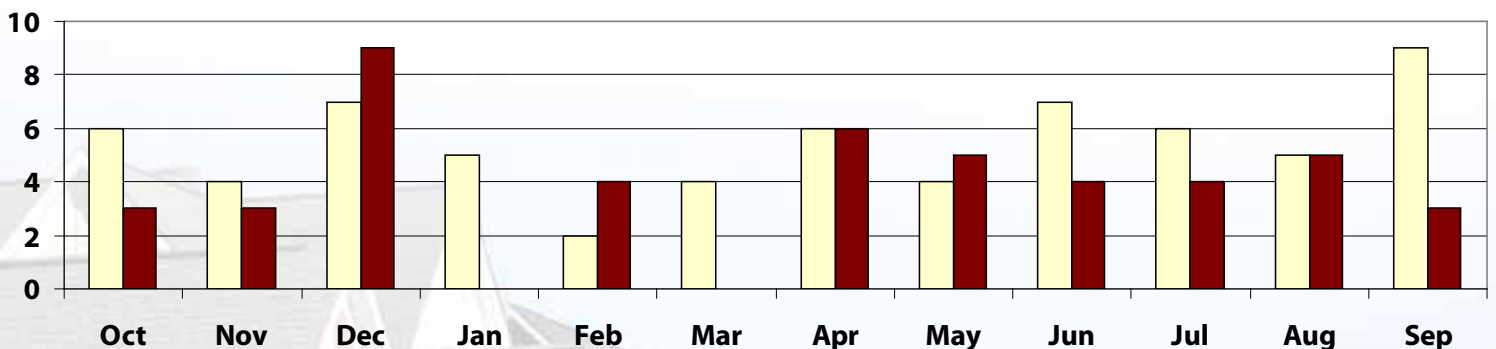
	Median			Average		
	Sep 2010	Sep 2009	% Change	Sep 2010	Sep 2009	% Change
List Price	\$99,700	\$125,000	- 20.2%	\$102,967	\$121,708	- 15.4%
Sold Price	\$102,700	\$117,500	- 12.6%	\$94,617	\$116,764	- 19.0%
Square Feet	1296	1737	- 25.4%	1363	1624	- 16.1%
LP/SF	\$69	\$71	- 2.2%	\$76	\$76	+ 1.2%
SP/SF	\$67	\$71	- 5.8%	\$70	\$73	- 4.0%
SP/LP	86.8%	99.8%	- 13.0%	92.1%	96.5%	- 4.6%
DOM	18	159	- 88.7%	27	138	- 80.1%

Price Range	Quantity	DOM	Price Range	Quantity	DOM
\$149,999 or under	3	27	\$500,000- \$549,999	0	--
\$150,000- \$199,999	0	--	\$550,000- \$599,999	0	--
\$200,000- \$249,999	0	--	\$600,000- \$699,999	0	--
\$250,000- \$299,999	0	--	\$700,000- \$799,999	0	--
\$300,000- \$349,999	0	--	\$800,000- \$899,999	0	--
\$350,000- \$399,999	0	--	\$900,000- \$999,999	0	--
\$400,000- \$449,999	0	--	\$1,000,000 or over	0	--
\$450,000- \$499,999	0	--	Total:	3	18

	Sep 2010	Sep 2009	% Change	2010 YTD	2009 YTD	% Change
Sold Listings	3	9	- 66.7%	31	48	- 35.4%
Volume	\$283,850	\$1,050,875	- 73.0%	\$3,524,354	\$5,069,455	- 30.5%

Number of Sales

□ Previous Year ■ Most Recent Year



Gracy Title
—a stewart company

Based on information from the Austin Board of REALTORS® (alternatively, from ACTRIS) for the month indicated on the header. Neither the Board nor ACTRIS guarantees or is in any way responsible for its accuracy. All data is provided 'AS IS' and with all faults. Data maintained by the Board or ACTRIS may not reflect all real estate activity in the market. Copyright 2008 Austin Central Texas Realty Information Services, Inc.

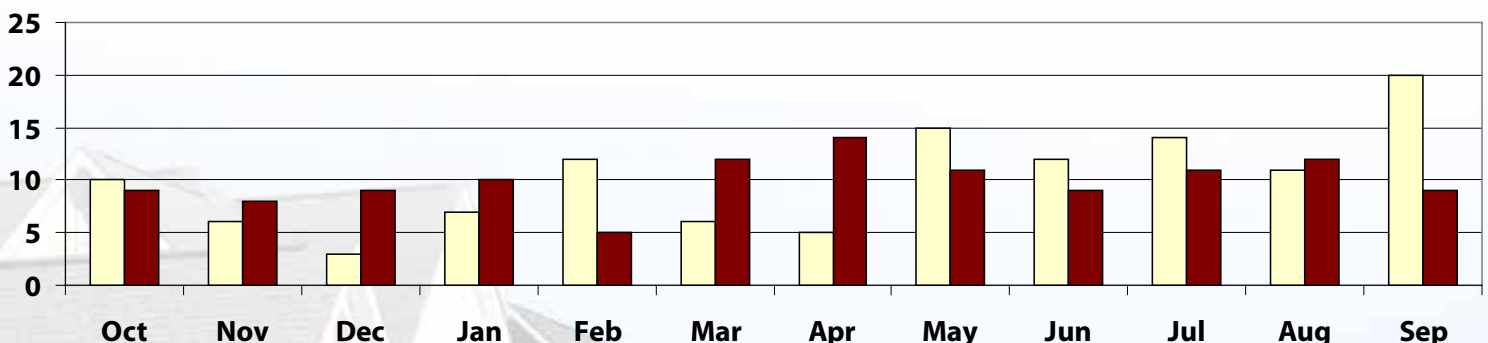
	Median			Average		
	Sep 2010	Sep 2009	% Change	Sep 2010	Sep 2009	% Change
List Price	\$285,000	\$239,700	+ 18.9%	\$299,113	\$241,485	+ 23.9%
Sold Price	\$280,000	\$237,250	+ 18.0%	\$288,735	\$235,031	+ 22.9%
Square Feet	1997	2401	- 16.8%	2472	2286	+ 8.1%
LP/SF	\$115	\$108	+ 5.9%	\$121	\$105	+ 15.0%
SP/SF	\$107	\$107	+ 0.6%	\$117	\$102	+ 15.2%
SP/LP	98.2%	98.2%	+ 0.1%	97.1%	97.0%	+ 0.1%
DOM	109	76	+ 43.4%	86	87	- 1.2%

Price Range	Quantity	DOM	Price Range	Quantity	DOM
\$149,999 or under	1	109	\$500,000- \$549,999	0	--
\$150,000- \$199,999	1	3	\$550,000- \$599,999	1	164
\$200,000- \$249,999	2	17	\$600,000- \$699,999	0	--
\$250,000- \$299,999	2	112	\$700,000- \$799,999	0	--
\$300,000- \$349,999	1	130	\$800,000- \$899,999	0	--
\$350,000- \$399,999	1	108	\$900,000- \$999,999	0	--
\$400,000- \$449,999	0	--	\$1,000,000 or over	0	--
\$450,000- \$499,999	0	--	Total:	9	109

	Sep 2010	Sep 2009	% Change	2010 YTD	2009 YTD	% Change
Sold Listings	9	20	- 55.0%	93	102	- 8.8%
Volume	\$2,598,617	\$4,700,610	- 44.7%	\$21,223,862	\$22,902,734	- 7.3%

Number of Sales

Previous Year
 Most Recent Year



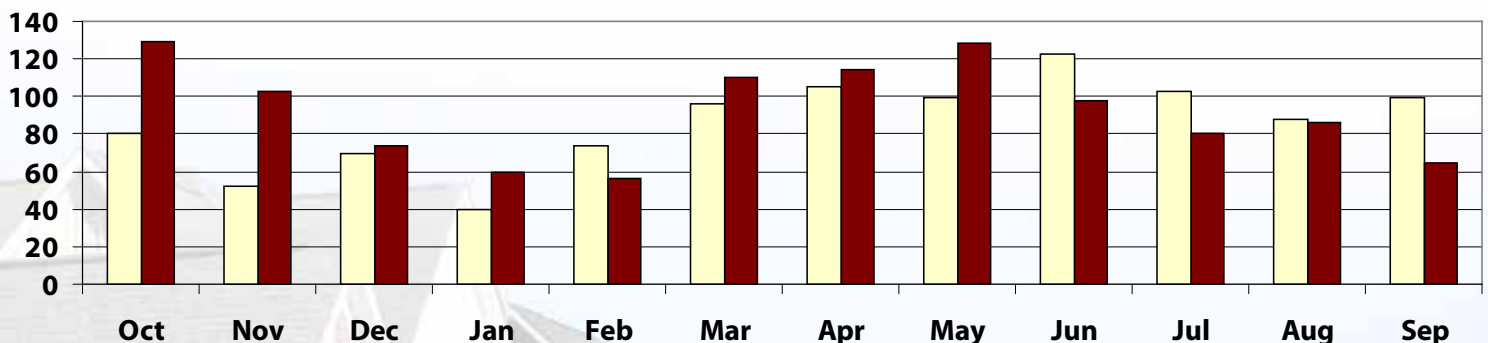
	Median			Average		
	Sep 2010	Sep 2009	% Change	Sep 2010	Sep 2009	% Change
List Price	\$192,210	\$163,900	+ 17.3%	\$199,462	\$187,076	+ 6.6%
Sold Price	\$182,000	\$162,900	+ 11.7%	\$193,423	\$182,027	+ 6.3%
Square Feet	2208	2162	+ 2.1%	2455	2233	+ 9.9%
LP/SF	\$83	\$85	- 2.7%	\$84	\$84	- 0.8%
SP/SF	\$81	\$84	- 3.7%	\$81	\$82	- 1.5%
SP/LP	97.5%	98.6%	- 1.1%	97.2%	97.9%	- 0.6%
DOM	55	29	+ 89.7%	72	45	+ 58.6%

Price Range	Quantity	DOM	Price Range	Quantity	DOM
\$149,999 or under	18	75	\$500,000- \$549,999	0	--
\$150,000- \$199,999	20	81	\$550,000- \$599,999	0	--
\$200,000- \$249,999	16	58	\$600,000- \$699,999	0	--
\$250,000- \$299,999	5	70	\$700,000- \$799,999	0	--
\$300,000- \$349,999	5	67	\$800,000- \$899,999	0	--
\$350,000- \$399,999	0	--	\$900,000- \$999,999	0	--
\$400,000- \$449,999	0	--	\$1,000,000 or over	0	--
\$450,000- \$499,999	1	98	Total:	65	55

	Sep 2010	Sep 2009	% Change	2010 YTD	2009 YTD	% Change
Sold Listings	65	99	- 34.3%	797	827	- 3.6%
Volume	\$12,572,518	\$18,020,710	- 30.2%	\$150,859,018	\$155,584,347	- 3.0%

Number of Sales

Previous Year Most Recent Year



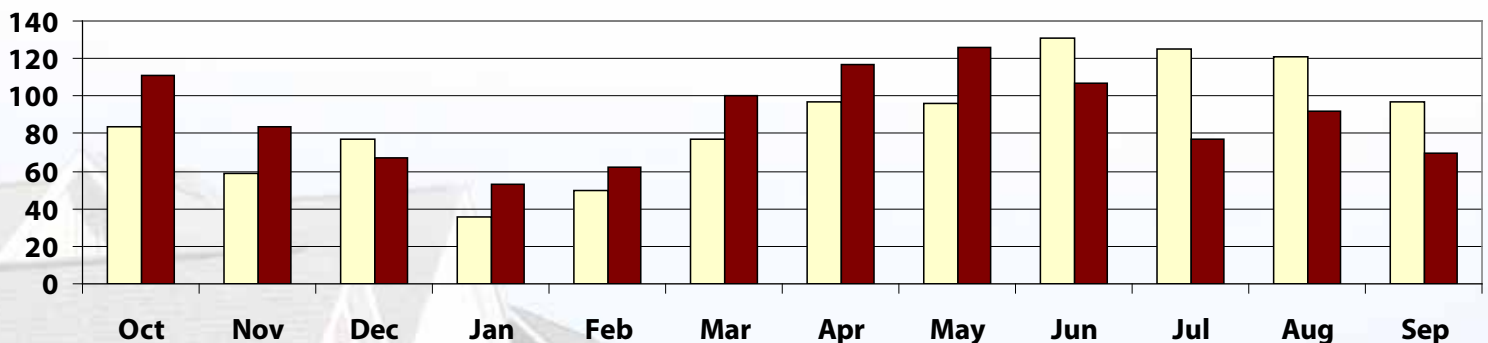
	Median			Average		
	Sep 2010	Sep 2009	% Change	Sep 2010	Sep 2009	% Change
List Price	\$242,425	\$214,000	+ 13.3%	\$248,227	\$238,584	+ 4.0%
Sold Price	\$234,000	\$210,000	+ 11.4%	\$238,908	\$228,816	+ 4.4%
Square Feet	2478	2368	+ 4.6%	2509	2485	+ 1.0%
LP/SF	\$99	\$94	+ 6.1%	\$98	\$96	+ 2.7%
SP/SF	\$97	\$92	+ 5.0%	\$95	\$93	+ 2.4%
SP/LP	97.6%	98.0%	- 0.5%	96.6%	96.9%	- 0.3%
DOM	54	53	+ 0.9%	71	80	- 10.9%

Price Range	Quantity	DOM	Price Range	Quantity	DOM
\$149,999 or under	15	47	\$500,000- \$549,999	0	--
\$150,000- \$199,999	14	116	\$550,000- \$599,999	0	--
\$200,000- \$249,999	11	59	\$600,000- \$699,999	0	--
\$250,000- \$299,999	14	71	\$700,000- \$799,999	0	--
\$300,000- \$349,999	6	79	\$800,000- \$899,999	0	--
\$350,000- \$399,999	6	68	\$900,000- \$999,999	0	--
\$400,000- \$449,999	3	46	\$1,000,000 or over	0	--
\$450,000- \$499,999	1	2	Total:	70	54

	Sep 2010	Sep 2009	% Change	2010 YTD	2009 YTD	% Change
Sold Listings	70	97	- 27.8%	804	830	- 3.1%
Volume	\$16,723,561	\$22,195,140	- 24.7%	\$201,264,402	\$191,681,954	+ 5.0%

Number of Sales

□ Previous Year ■ Most Recent Year



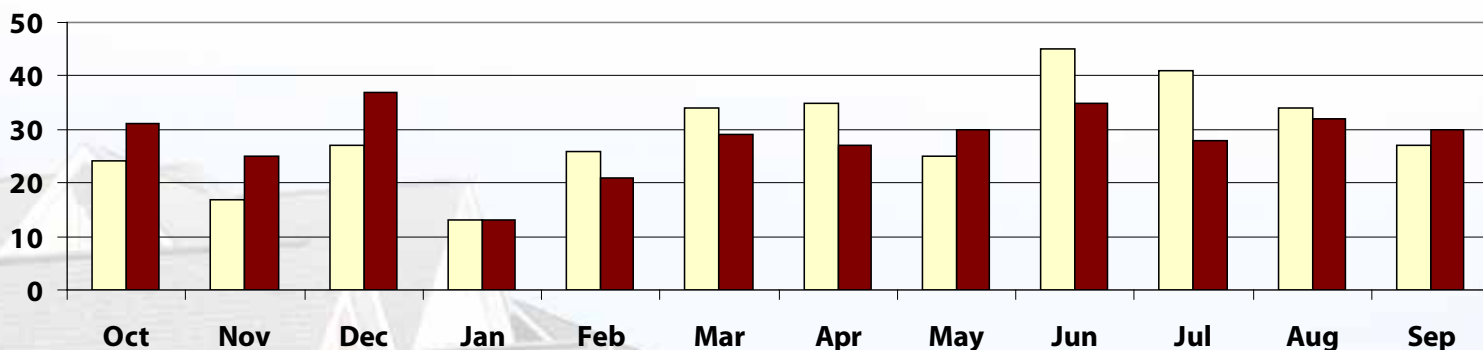
	Median			Average		
	Sep 2010	Sep 2009	% Change	Sep 2010	Sep 2009	% Change
List Price	\$352,500	\$320,000	+ 10.2%	\$354,758	\$357,487	- 0.8%
Sold Price	\$335,061	\$295,000	+ 13.6%	\$338,710	\$335,461	+ 1.0%
Square Feet	2952	2956	- 0.2%	2965	2961	+ 0.1%
LP/SF	\$122	\$111	+ 10.0%	\$121	\$120	+ 1.5%
SP/SF	\$116	\$107	+ 8.3%	\$116	\$113	+ 2.9%
SP/LP	96.9%	96.6%	+ 0.3%	95.7%	94.6%	+ 1.2%
DOM	60	65	- 7.7%	85	96	- 11.6%

Price Range	Quantity	DOM	Price Range	Quantity	DOM
\$149,999 or under	1	52	\$500,000- \$549,999	0	--
\$150,000- \$199,999	0	--	\$550,000- \$599,999	0	--
\$200,000- \$249,999	5	108	\$600,000- \$699,999	1	36
\$250,000- \$299,999	2	229	\$700,000- \$799,999	0	--
\$300,000- \$349,999	11	66	\$800,000- \$899,999	0	--
\$350,000- \$399,999	5	81	\$900,000- \$999,999	0	--
\$400,000- \$449,999	2	65	\$1,000,000 or over	0	--
\$450,000- \$499,999	3	69	Total:	30	60

	Sep 2010	Sep 2009	% Change	2010 YTD	2009 YTD	% Change
Sold Listings	30	27	+ 11.1%	245	280	- 12.5%
Volume	\$10,161,296	\$9,057,440	+ 12.2%	\$78,600,476	\$91,657,583	- 14.2%

Number of Sales

Previous Year
 Most Recent Year



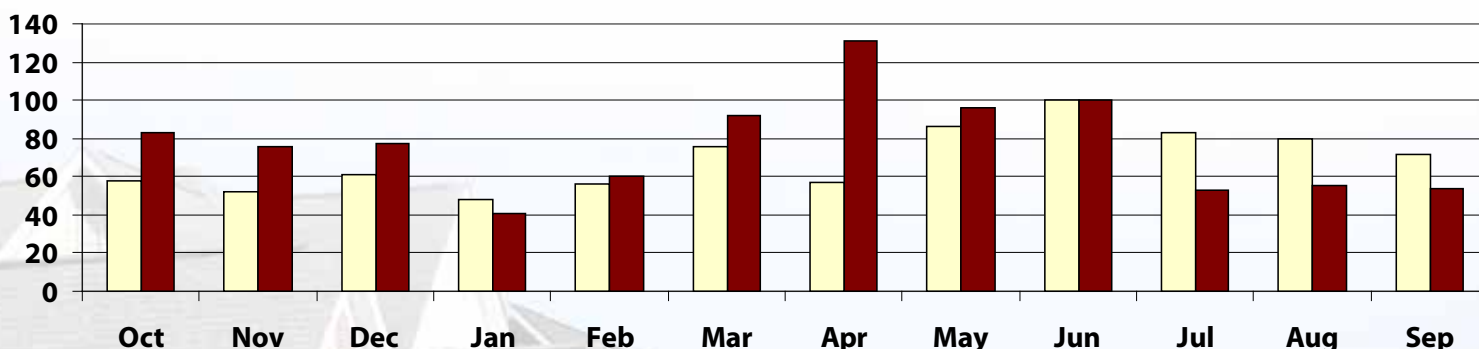
	Median			Average		
	Sep 2010	Sep 2009	% Change	Sep 2010	Sep 2009	% Change
List Price	\$155,900	\$145,325	+ 7.3%	\$168,679	\$162,800	+ 3.6%
Sold Price	\$150,425	\$143,500	+ 4.8%	\$161,714	\$158,013	+ 2.3%
Square Feet	1850	1754	+ 5.5%	1965	1895	+ 3.7%
LP/SF	\$85	\$88	- 2.9%	\$87	\$87	+ 0.1%
SP/SF	\$82	\$83	- 0.7%	\$83	\$84	- 1.3%
SP/LP	96.9%	97.9%	- 1.0%	96.3%	97.5%	- 1.2%
DOM	48	34	+ 43.3%	61	53	+ 15.7%

Price Range	Quantity	DOM	Price Range	Quantity	DOM
\$149,999 or under	27	58	\$500,000- \$549,999	0	--
\$150,000- \$199,999	19	64	\$550,000- \$599,999	0	--
\$200,000- \$249,999	2	58	\$600,000- \$699,999	0	--
\$250,000- \$299,999	3	63	\$700,000- \$799,999	0	--
\$300,000- \$349,999	2	83	\$800,000- \$899,999	0	--
\$350,000- \$399,999	1	32	\$900,000- \$999,999	0	--
\$400,000- \$449,999	0	--	\$1,000,000 or over	0	--
\$450,000- \$499,999	0	--	Total:	54	48

	Sep 2010	Sep 2009	% Change	2010 YTD	2009 YTD	% Change
Sold Listings	54	72	- 25.0%	682	658	+ 3.6%
Volume	\$8,732,543	\$11,376,970	- 23.2%	\$112,496,650	\$106,590,706	+ 5.5%

Number of Sales

Previous Year ■ Most Recent Year



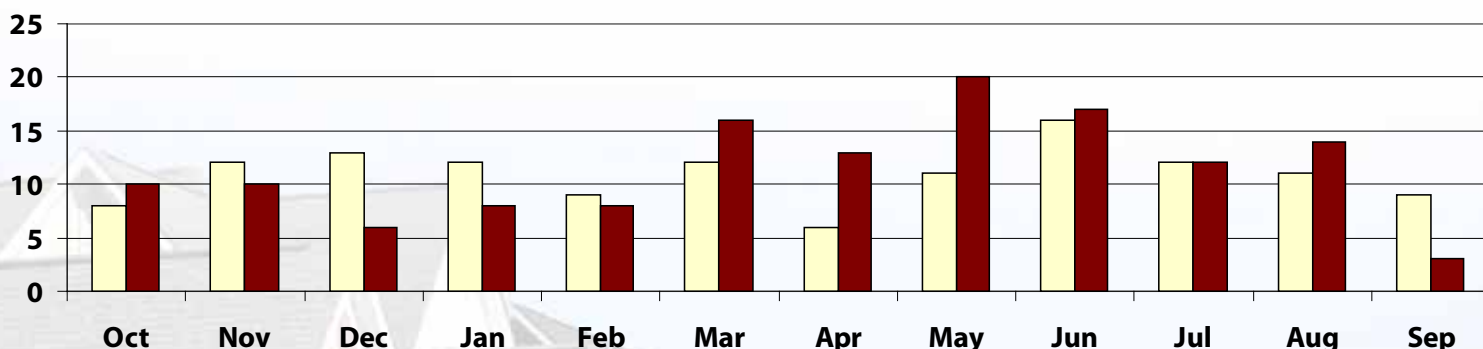
	Median			Average		
	Sep 2010	Sep 2009	% Change	Sep 2010	Sep 2009	% Change
List Price	\$129,950	\$239,900	- 45.8%	\$139,213	\$214,011	- 35.0%
Sold Price	\$124,000	\$222,000	- 44.1%	\$133,100	\$209,650	- 36.5%
Square Feet	1235	2151	- 42.6%	1556	2183	- 28.7%
LP/SF	\$92	\$98	- 6.0%	\$92	\$94	- 1.1%
SP/SF	\$90	\$100	- 10.4%	\$89	\$91	- 3.0%
SP/LP	95.4%	97.5%	- 2.2%	95.8%	96.8%	- 1.0%
DOM	67	67	0.0%	59	90	- 34.5%

Price Range	Quantity	DOM	Price Range	Quantity	DOM
\$149,999 or under	2	48	\$500,000- \$549,999	0	--
\$150,000- \$199,999	1	81	\$550,000- \$599,999	0	--
\$200,000- \$249,999	0	--	\$600,000- \$699,999	0	--
\$250,000- \$299,999	0	--	\$700,000- \$799,999	0	--
\$300,000- \$349,999	0	--	\$800,000- \$899,999	0	--
\$350,000- \$399,999	0	--	\$900,000- \$999,999	0	--
\$400,000- \$449,999	0	--	\$1,000,000 or over	0	--
\$450,000- \$499,999	0	--	Total:	3	67

	Sep 2010	Sep 2009	% Change	2010 YTD	2009 YTD	% Change
Sold Listings	3	9	- 66.7%	111	98	+ 13.3%
Volume	\$399,300	\$1,886,850	- 78.8%	\$16,681,373	\$15,677,765	+ 6.4%

Number of Sales

□ Previous Year ■ Most Recent Year



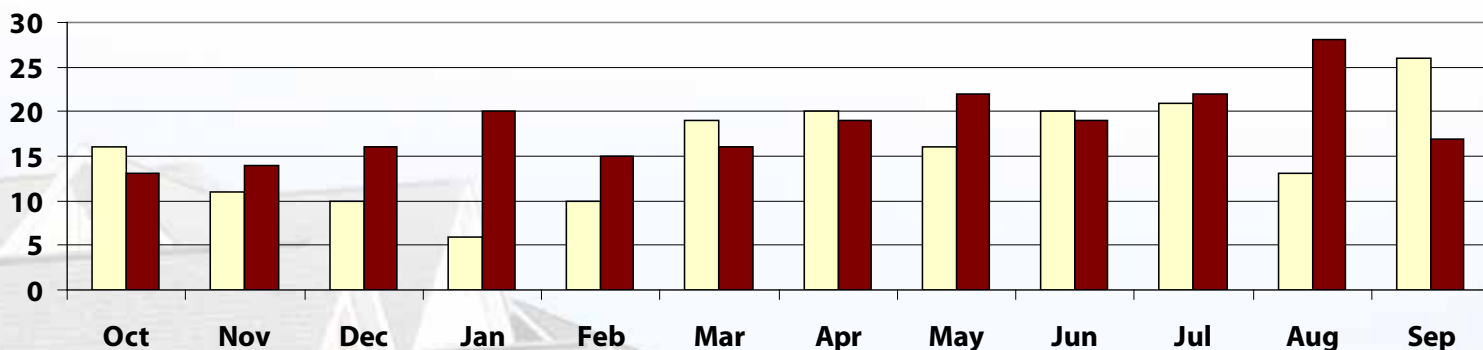
	Median			Average		
	Sep 2010	Sep 2009	% Change	Sep 2010	Sep 2009	% Change
List Price	\$199,900	\$210,745	- 5.1%	\$238,646	\$237,346	+ 0.5%
Sold Price	\$178,500	\$207,900	- 14.1%	\$221,593	\$225,690	- 1.8%
Square Feet	1700	1880	- 9.6%	1934	1878	+ 3.0%
LP/SF	\$121	\$119	+ 1.6%	\$121	\$129	- 5.6%
SP/SF	\$111	\$115	- 3.3%	\$113	\$122	- 7.5%
SP/LP	93.7%	95.7%	- 2.1%	93.2%	95.6%	- 2.5%
DOM	88	58	+ 51.7%	94	96	- 2.3%

Price Range	Quantity	DOM	Price Range	Quantity	DOM
\$149,999 or under	5	62	\$500,000- \$549,999	0	--
\$150,000- \$199,999	4	100	\$550,000- \$599,999	0	--
\$200,000- \$249,999	1	164	\$600,000- \$699,999	0	--
\$250,000- \$299,999	3	103	\$700,000- \$799,999	0	--
\$300,000- \$349,999	1	201	\$800,000- \$899,999	0	--
\$350,000- \$399,999	3	68	\$900,000- \$999,999	0	--
\$400,000- \$449,999	0	--	\$1,000,000 or over	0	--
\$450,000- \$499,999	0	--	Total:	17	88

	Sep 2010	Sep 2009	% Change	2010 YTD	2009 YTD	% Change
Sold Listings	17	26	- 34.6%	178	151	+ 17.9%
Volume	\$3,767,075	\$5,867,950	- 35.8%	\$47,515,922	\$34,251,583	+ 38.7%

Number of Sales

Previous Year
 Most Recent Year



Surrounding Areas

September 2010

Residential MLS Area Statistics

Area

CC

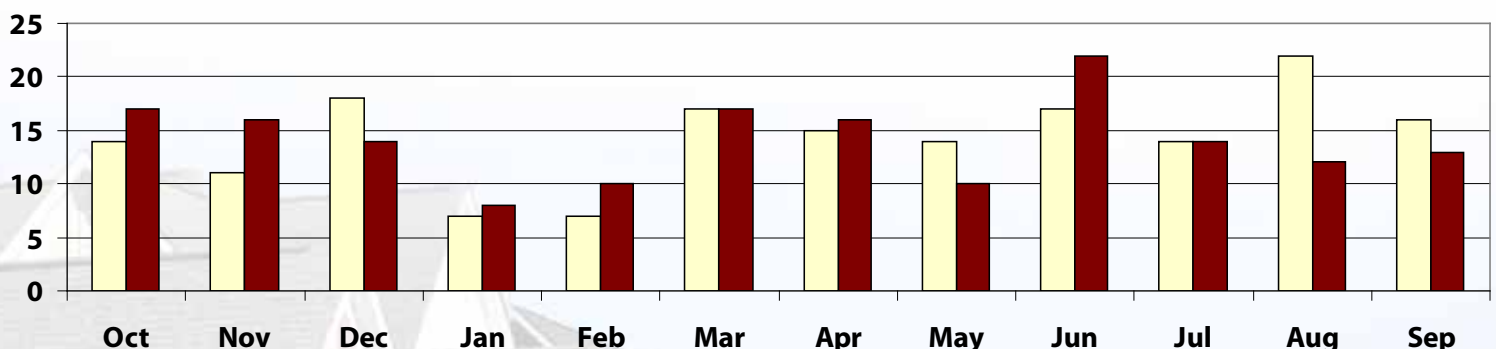
	Median			Average		
	Sep 2010	Sep 2009	% Change	Sep 2010	Sep 2009	% Change
List Price	\$103,500	\$116,750	- 11.3%	\$134,158	\$121,338	+ 10.6%
Sold Price	\$102,000	\$107,750	- 5.3%	\$125,858	\$114,543	+ 9.9%
Square Feet	1657	1444	+ 14.8%	1741	1698	+ 2.5%
LP/SF	\$74	\$77	- 3.5%	\$75	\$74	+ 0.5%
SP/SF	\$70	\$72	- 3.4%	\$69	\$69	- 0.4%
SP/LP	94.9%	94.9%	0.0%	92.2%	93.4%	- 1.3%
DOM	41	124	- 66.9%	106	117	- 9.9%

Price Range	Quantity	DOM	Price Range	Quantity	DOM
\$149,999 or under	11	109	\$500,000- \$549,999	0	--
\$150,000- \$199,999	1	139	\$550,000- \$599,999	0	--
\$200,000- \$249,999	0	--	\$600,000- \$699,999	0	--
\$250,000- \$299,999	0	--	\$700,000- \$799,999	0	--
\$300,000- \$349,999	0	--	\$800,000- \$899,999	0	--
\$350,000- \$399,999	0	--	\$900,000- \$999,999	0	--
\$400,000- \$449,999	1	41	\$1,000,000 or over	0	--
\$450,000- \$499,999	0	--	Total:	13	41

	Sep 2010	Sep 2009	% Change	2010 YTD	2009 YTD	% Change
Sold Listings	13	16	- 18.8%	122	129	- 5.4%
Volume	\$1,636,150	\$1,832,690	- 10.7%	\$12,740,314	\$13,009,133	- 2.1%

Number of Sales

□ Previous Year ■ Most Recent Year



Gracy Title
— a stewart company

Based on information from the Austin Board of REALTORS® (alternatively, from ACTRIS) for the month indicated on the header. Neither the Board nor ACTRIS guarantees or is in any way responsible for its accuracy. All data is provided 'AS IS' and with all faults. Data maintained by the Board or ACTRIS may not reflect all real estate activity in the market. Copyright 2008 Austin Central Texas Realty Information Services, Inc.

Surrounding Areas

September 2010

Residential MLS Area Statistics

Area

CM

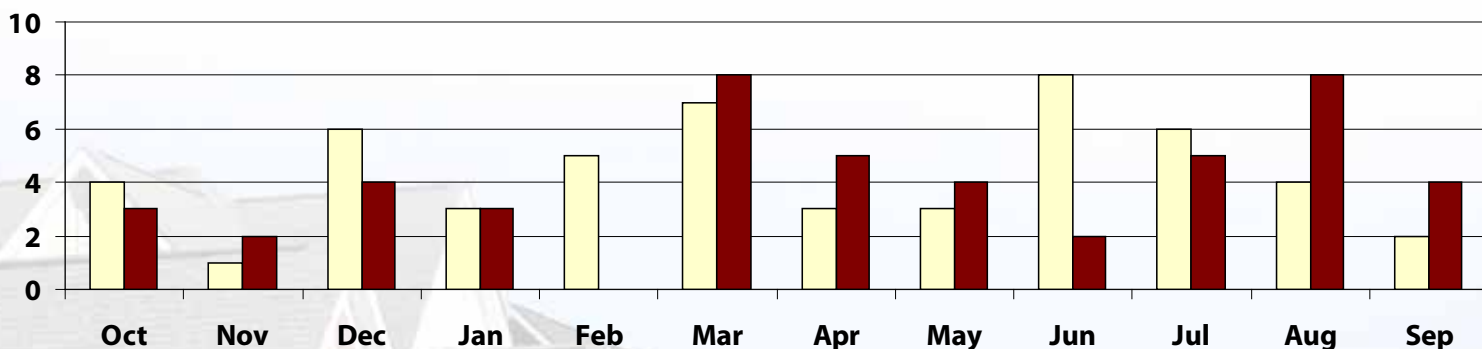
	Median			Average		
	Sep 2010	Sep 2009	% Change	Sep 2010	Sep 2009	% Change
List Price	\$217,450	\$284,450	- 23.6%	\$183,675	\$284,450	- 35.4%
Sold Price	\$206,000	\$247,000	- 16.6%	\$174,000	\$247,000	- 29.6%
Square Feet	1963	2065	- 4.9%	1817	2065	- 12.0%
LP/SF	\$111	\$116	- 4.6%	\$95	\$116	- 18.2%
SP/SF	\$105	\$101	+ 3.8%	\$89	\$101	- 11.1%
SP/LP	94.5%	87.1%	+ 8.6%	93.8%	87.1%	+ 7.7%
DOM	108	121	- 10.8%	122	121	+ 1.2%

Price Range	Quantity	DOM	Price Range	Quantity	DOM
\$149,999 or under	1	110	\$500,000- \$549,999	0	--
\$150,000- \$199,999	1	105	\$550,000- \$599,999	0	--
\$200,000- \$249,999	2	137	\$600,000- \$699,999	0	--
\$250,000- \$299,999	0	--	\$700,000- \$799,999	0	--
\$300,000- \$349,999	0	--	\$800,000- \$899,999	0	--
\$350,000- \$399,999	0	--	\$900,000- \$999,999	0	--
\$400,000- \$449,999	0	--	\$1,000,000 or over	0	--
\$450,000- \$499,999	0	--	Total:	4	108

	Sep 2010	Sep 2009	% Change	2010 YTD	2009 YTD	% Change
Sold Listings	4	2	+ 100.0%	39	41	- 4.9%
Volume	\$696,000	\$494,000	+ 40.9%	\$8,954,789	\$10,448,317	- 14.3%

Number of Sales

Previous Year Most Recent Year



Gracy Title
— a Stewart company

Based on information from the Austin Board of REALTORS® (alternatively, from ACTRIS) for the month indicated on the header. Neither the Board nor ACTRIS guarantees or is in any way responsible for its accuracy. All data is provided 'AS IS' and with all faults. Data maintained by the Board or ACTRIS may not reflect all real estate activity in the market. Copyright 2008 Austin Central Texas Realty Information Services, Inc.