

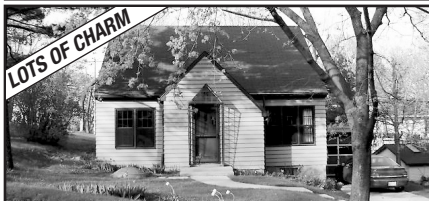
**1-888-505-9825 for Free 24 hour Info.**  
**View Virtual Tours at [www.DeveryCash.com](http://www.DeveryCash.com)**



**Northern Bay – Overlooking 10th Hole**  
 Spectacular home in Adams Co. w/ great rental history overlooking course & clubhouse. 5 bdrms, 3.5 baths & 3800 sqft. **Ext 601**



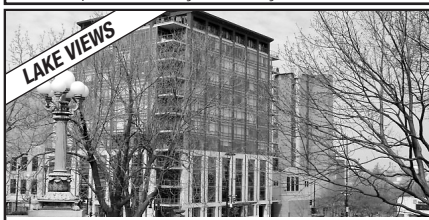
**7236 Springfield Cir: Waunakee**  
 Private 4br, 3.5ba ranch w/ 3400+ sqft on 1.4 acre wooded lot! 2 way fireplace, fin. walkout LL, 4+ garage! **Ext 771**



**1013 Grover Street: Madison**  
 3br, 1ba, 1188 sqft home w/ orig. woodwork, hardwood flrs, lrg master bdrm, newer mechanicals & plumbing! **Ext 501**



**Union Transfer: Downtown**  
 Upscale 3bdrm, 2 bath, 2031 sq ft condo facing Lake Monona w/ granite baths, custom lighting, private laundry & balcony! **Ext 751**



**100 Wisconsin Ave: Downtown**  
 9th flr condo, southern exposure, gourmet kitchen & high end finishes, 2 bdrm plus den, 2 baths, 2000+ sq ft. **Ext 221**



**4221 Mohawk: Madison**  
 New listing in Nakoma – great new gourmet kitchen, cherry floors, screen porch, 4 bdrms, 2ba, 2700+ sq ft. **Ext 791**



**1009 Winding Way: Madison**  
 Just 4 years new, many custom details and great open floor plan. 5 bdrm, 3.5 ba, 3700 sqft. **Ext 831**



**20 Halite Way: Madison**  
 Fitchburg Lofts Condo, 2 years old, end unit, 2bdrm, 2 1/2 ba, over 1500 sqft., 2 car garage. **Ext 811**



**Metropolitan Place Phase II: Downtown**  
 1 bdrm, 1bath, + office, 700 sq ft condo on 2nd flr w/ private laundry, balcony, exercise room & more! **Ext 801**



**Metropolitan Place Phase II: Downtown**  
 2bdrm, 1 bath and 1040 sq ft, southern exposure, new condo on 5th floor w/ private laundry! Large pets OK. **Ext 781**



**3050 Saddle Brooke Trl: Sun Prairie(New Position/Add Banner – Custom Finishes)**  
 3br, 2.5ba on 3/4 acre lot. Mstr Bdrm on ML w/ lrg walk-in shwr, double vanity & jacuzzi tub. **Ext 541**



**4921 Flad Ave: Madison**  
 Orchard Ridge Ranch under 175K. Hrdwd's, 1 car gar, near park, schools, shops. 3bd/1.5ba, 1200 sqft **Ext 381**



**9 Sherman Terrace: Madison**  
 2 bdrm, 1 ba, 852 sqft, fully upgraded and lots of character **Ext 821**



**6147 Dell Drive #4: Madison**  
 END UNIT! 3 bdrm, 2.5 bath, 1375 sqft townhouse, exposed LL. All new appliances, Cat 5 wiring, entire unit freshly painted. **Ext 261**

**Lot Inventory for Sale**

- Savannah Village - Waunakee
- Southbridge - Waunakee
- Providence - Sun Prairie
- Spruce Hollow - Middleton

**4 Lots Available For Sale**  
 in popular neighborhoods. Bring your own builder!  
**Ext 631**

**Kittleson Real Estate Team, Inc.**



**Darren Kittleson -**  
 Broker  
 Keller Williams West  
 Keller Williams East  
 DarrenK@kw.com  
 www.darrenkittleson.com



**Each Office Independently Owned and Operated**

**Devery Cash -**  
 Realtor  
 608-662-9510  
 Direct Line  
 Devery@kw.com  
 www.deverycash.com



**Virtual Tours available for all completed homes at [www.deverycash.com](http://www.deverycash.com)**